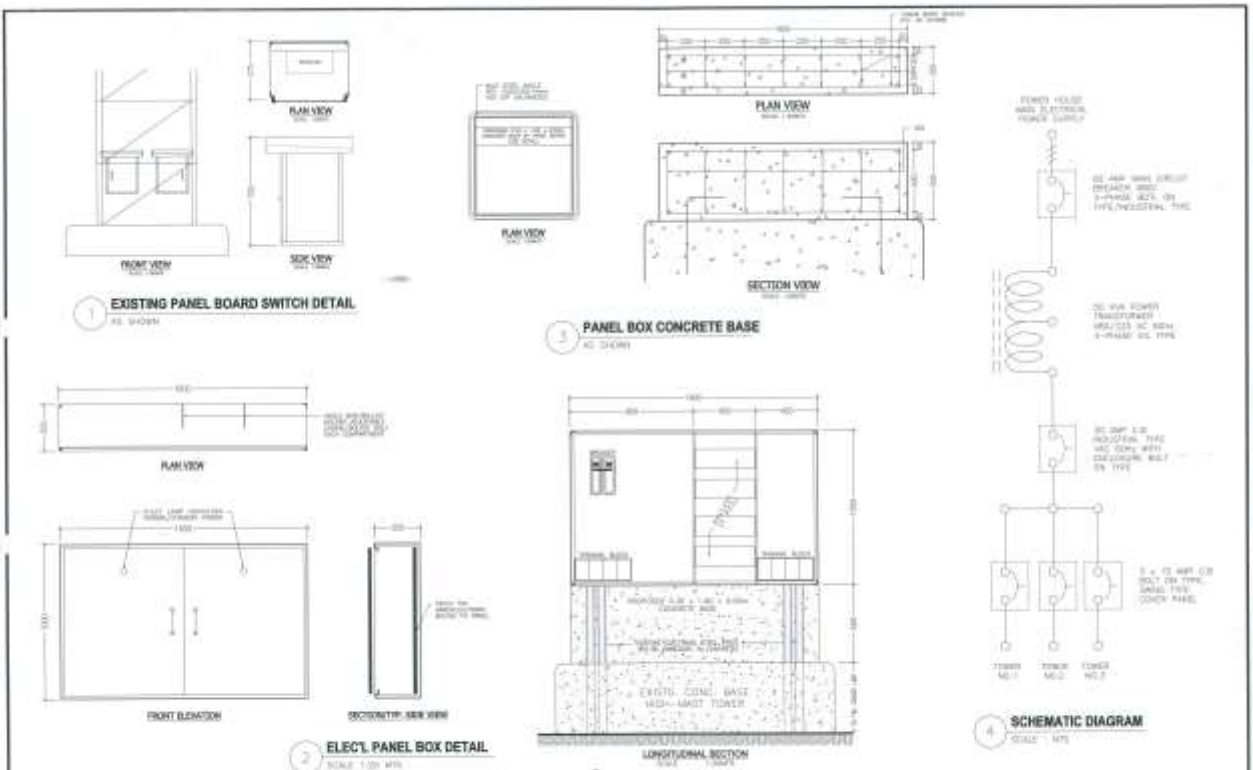


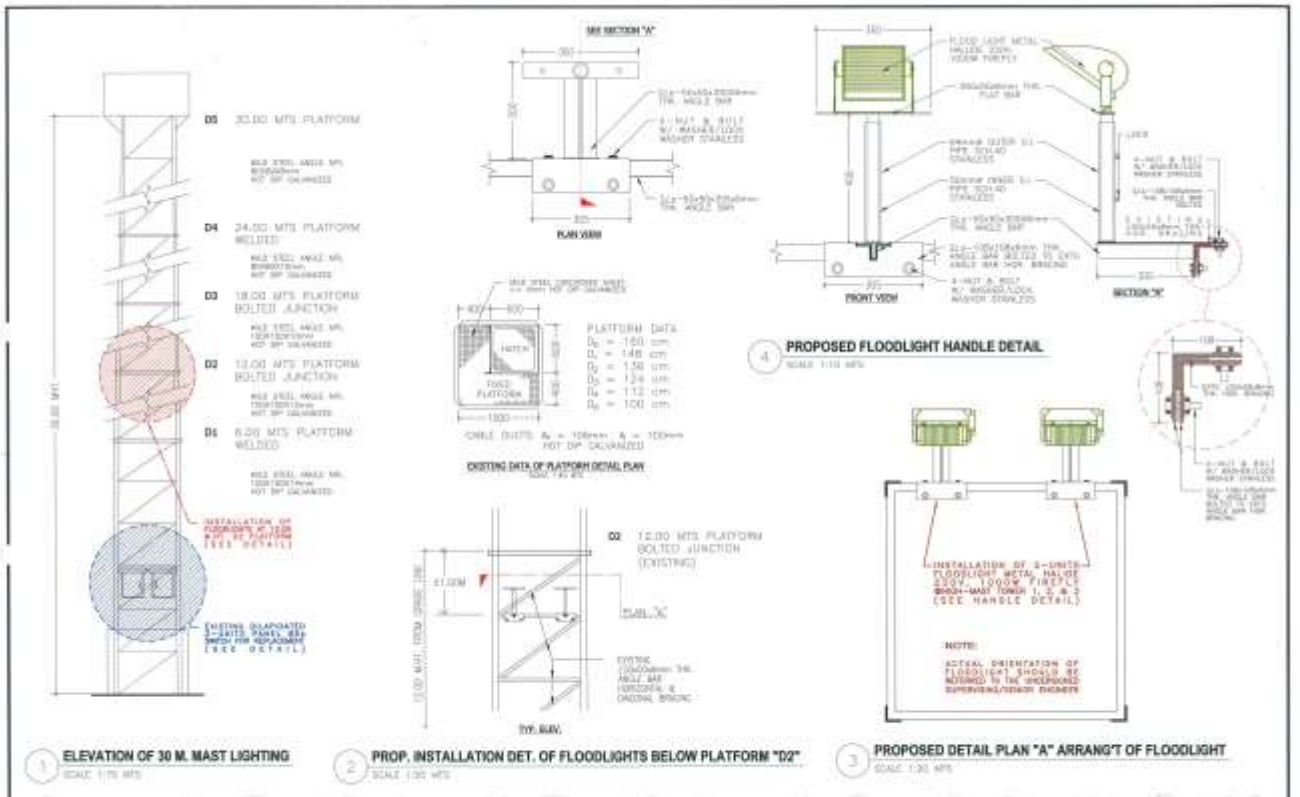
**PROPOSED REPLACEMENT OF DILAPIDATED LUMINAIRE FOR THE 12.00 M.H.T FLOODLIGHT STEEL POLE 1**

<p>PHILIPPINE PORTS AUTHORITY PNO ZAMBONGA NOV 2017</p>	TITLE: <b>REPAIR/REPLACE OF PORT LIGHTING SERVICES</b>		SHEET CONTENT: DETAIL OF 12M.H.T FLOODLIGHT STEEL POLE PLATFORM MOUNTING DETAIL FLOODLIGHT FIXTURE (SON-T 1056W HPS) PLATFORM PLAN OF FLOODLIGHT DETAIL OF FLOODLIGHT MTG. ON PLATFORM		SHEET NO.	
	LOCATION: <b>PORT OF ZAMBONGA, ZAMBONGA CITY</b>	CHECKED BY: <b>MAH-DON S. UKICH</b> SUPERVISING ENGINEER A	REVIEWED BY: <b>TASHMA H. ABD-MAADL</b> PRINCIPAL ENGINEER A	RECOMMENDED BY: <b>JOHNSON D. KHO</b> SRD MANAGER	APPROVED BY: <b>LIBERTO C. DELA ROSA</b> PORT MANAGER	SET: <b>G 12</b>
	PREPARED BY: <b>EUGENIO B. BALVEZ</b> ACTING SENIOR ENGINEER A	CHECKED BY: <b>MAH-DON S. UKICH</b> SUPERVISING ENGINEER A	REVIEWED BY: <b>TASHMA H. ABD-MAADL</b> PRINCIPAL ENGINEER A	RECOMMENDED BY: <b>JOHNSON D. KHO</b> SRD MANAGER	APPROVED BY: <b>LIBERTO C. DELA ROSA</b> PORT MANAGER	PLAN: <b>12</b>

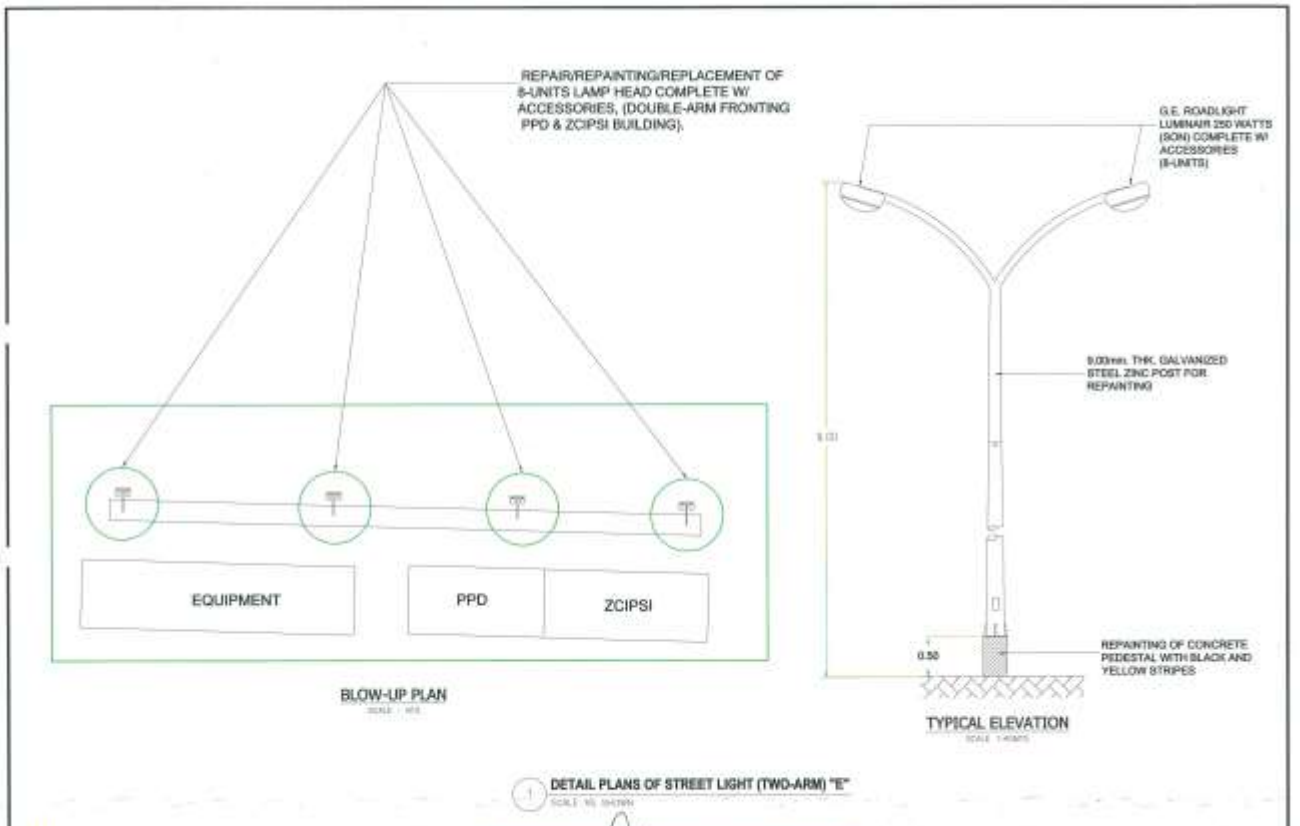


**PROPOSED REPAIR/REPLACEMENT OF DILAPIDATED LUMINAIRE W/ HANDLE INCLUDING PANEL BD. FOR THE 30.00 M.H.T MAST TOWER**

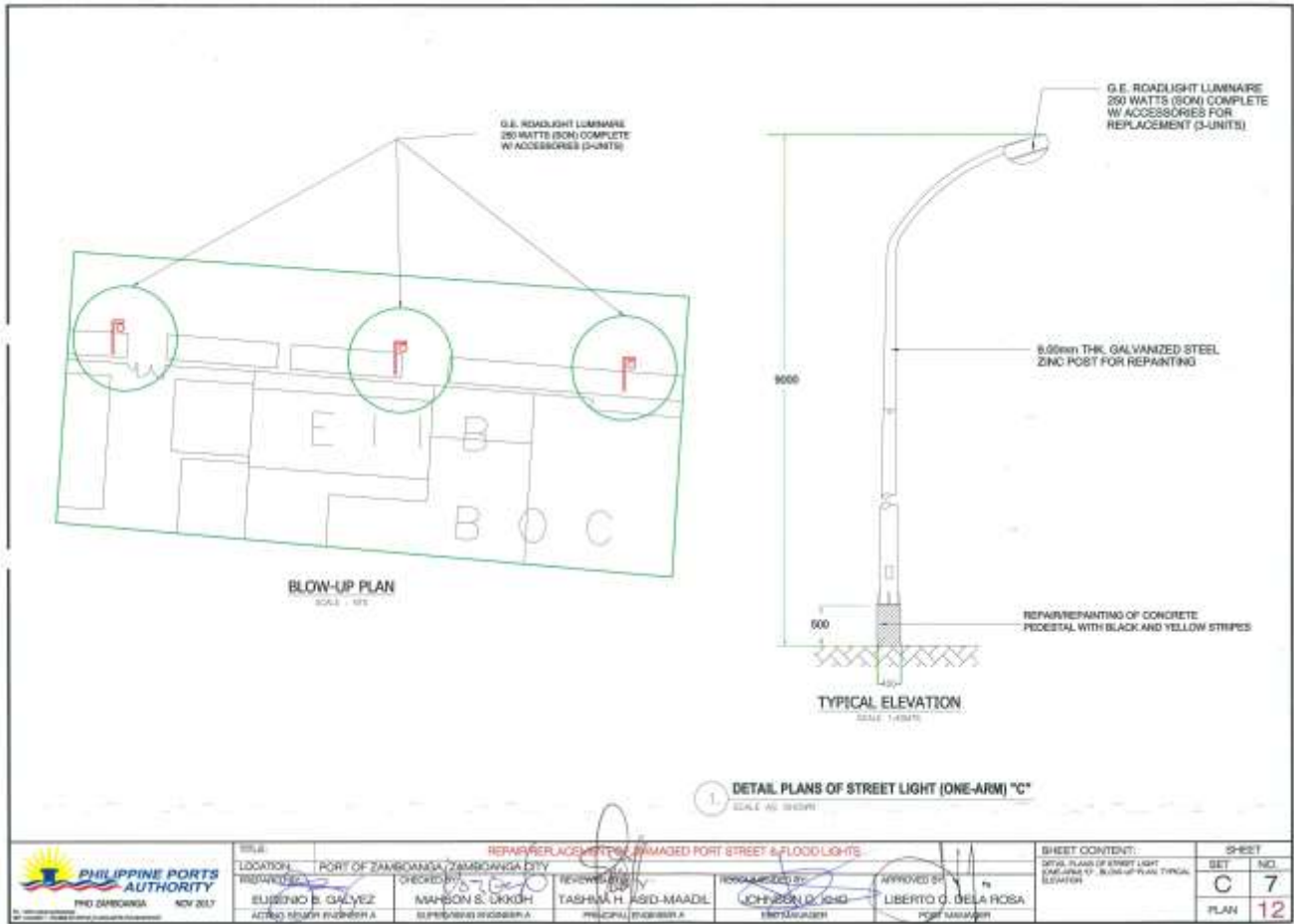
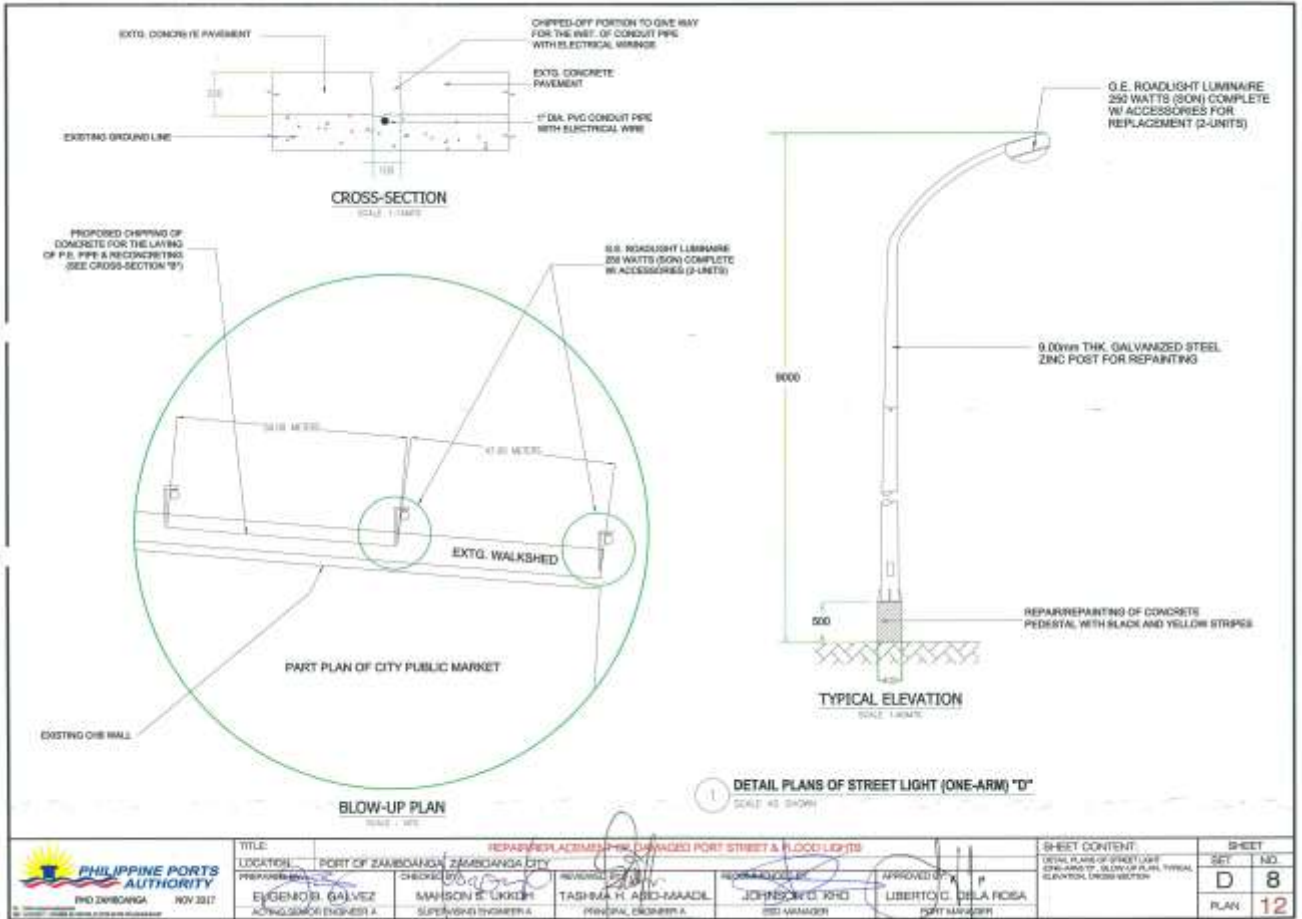
<p>PHILIPPINE PORTS AUTHORITY PNO ZAMBONGA NOV 2017</p>	TITLE: <b>REPAIR/REPLACE OF PORT LIGHTING SERVICES</b>		SHEET CONTENT: EXISTING PANEL BOARD SWITCH DETAIL, ELEC PANEL BOX DETAIL, PANEL BOX CONCRETE BASE DETAIL, SCHEMATIC DIAGRAM		SHEET NO.	
	LOCATION: <b>PORT OF ZAMBONGA, ZAMBONGA CITY</b>	CHECKED BY: <b>MAH-DON S. UKICH</b> SUPERVISING ENGINEER A	REVIEWED BY: <b>TASHMA H. ABD-MAADL</b> PRINCIPAL ENGINEER A	RECOMMENDED BY: <b>JOHNSON D. KHO</b> SRD MANAGER	APPROVED BY: <b>LIBERTO C. DELA ROSA</b> PORT MANAGER	SET: <b>F 11</b>
	PREPARED BY: <b>EUGENIO B. BALVEZ</b> ACTING SENIOR ENGINEER A	CHECKED BY: <b>MAH-DON S. UKICH</b> SUPERVISING ENGINEER A	REVIEWED BY: <b>TASHMA H. ABD-MAADL</b> PRINCIPAL ENGINEER A	RECOMMENDED BY: <b>JOHNSON D. KHO</b> SRD MANAGER	APPROVED BY: <b>LIBERTO C. DELA ROSA</b> PORT MANAGER	PLAN: <b>12</b>

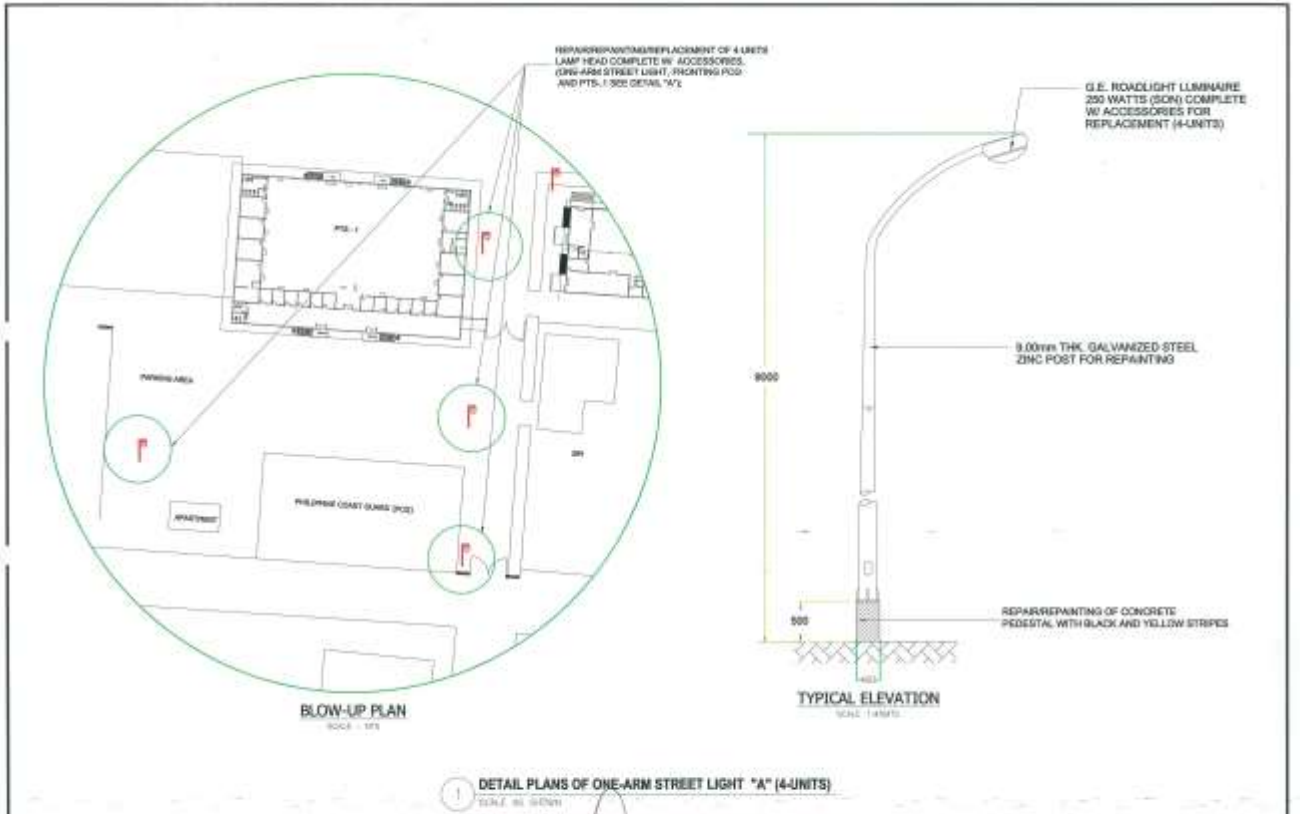


PROPOSED REPAIR/REPLACEMENT OF DILAPIDATED LUMINAIRE W/ HANDLE INCLUDING PANEL BD. FOR THE 30.00 M.H.T MAST TOWER							SHEET CONTENT:		SHEET NO.	
 PHILIPPINE PORTS AUTHORITY PROZ ZAMBANGA NOV 2017	TITLE: REPAIR/REPLACEMENT OF DAMAGED PORT STREET & FLOOD LIGHTS LOCATION: PORT OF ZAMBANGA, ZAMBANGA CITY PREPARED BY: EUGENIO B. GALVEZ CHECKED BY: MAHSON S. UKROH APPROVED BY: TASHMAH. ABD-MAADIL REVISION NO.: 01 APPROVED BY: JOHNSON B. KHO APPROVED BY: LIBERTO C. DELA ROSA						REPAIR/REPLACEMENT OF (20M) COMPLETE W/ ACCESSORIES		F 10 PLAN 12	
	ACTING SENIOR ENGINEER A SUPERVISING ENGINEER A PRINCIPAL ENGINEER A EDC MANAGER PORT MANAGER									

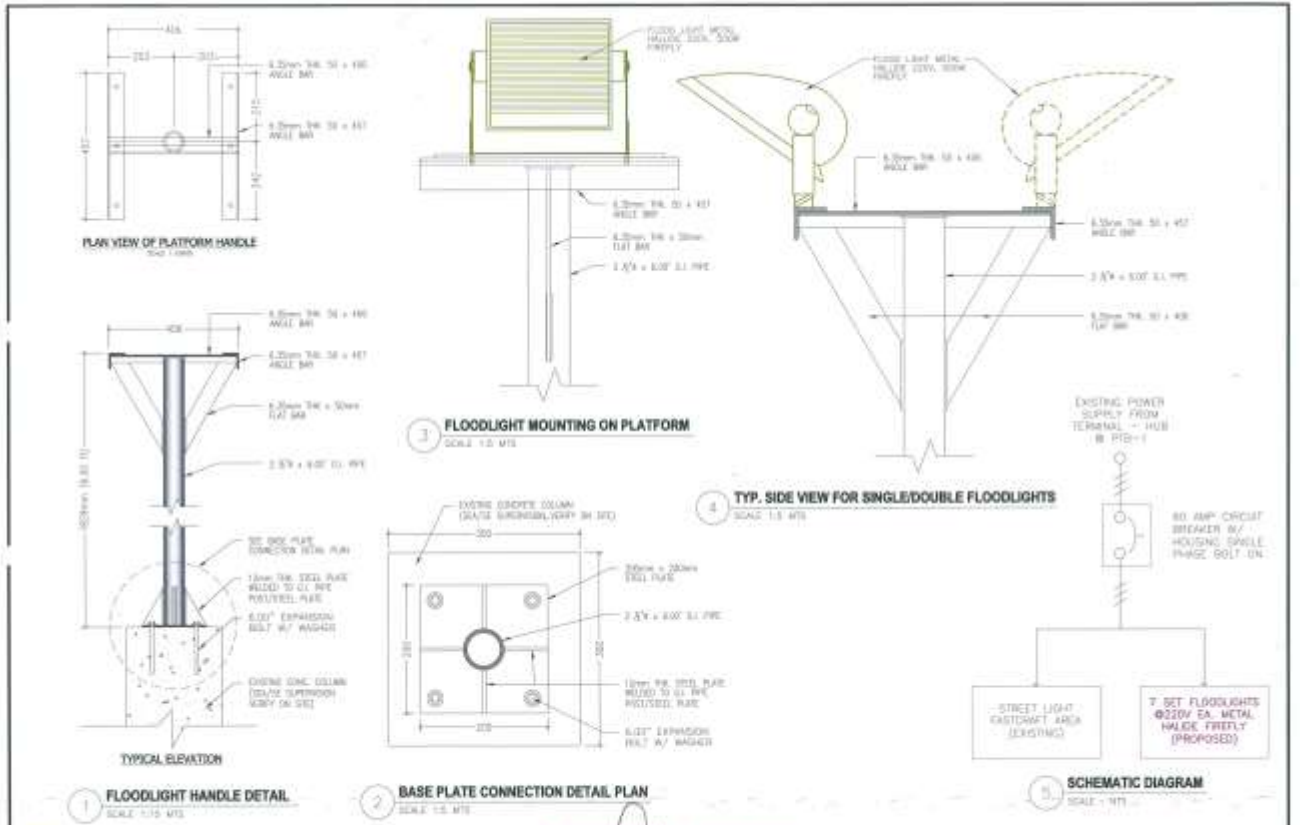


REPAIR/REPLACEMENT OF DAMAGED PORT STREET & FLOOD LIGHTS							SHEET CONTENT:		SHEET NO.	
 PHILIPPINE PORTS AUTHORITY PROZ ZAMBANGA NOV 2017	TITLE: REPAIR/REPLACEMENT OF DAMAGED PORT STREET & FLOOD LIGHTS LOCATION: PORT OF ZAMBANGA, ZAMBANGA CITY PREPARED BY: EUGENIO B. GALVEZ CHECKED BY: MAHSON S. UKROH APPROVED BY: TASHMAH. ABD-MAADIL REVISION NO.: 01 APPROVED BY: JOHNSON B. KHO APPROVED BY: LIBERTO C. DELA ROSA						DETAIL PLANS OF STREET LIGHT (TWO-ARM) W/ BLOW-UP PLAN TYPICAL ELEVATION		E 9 PLAN 12	
	ACTING SENIOR ENGINEER A SUPERVISING ENGINEER A PRINCIPAL ENGINEER A EDC MANAGER PORT MANAGER									

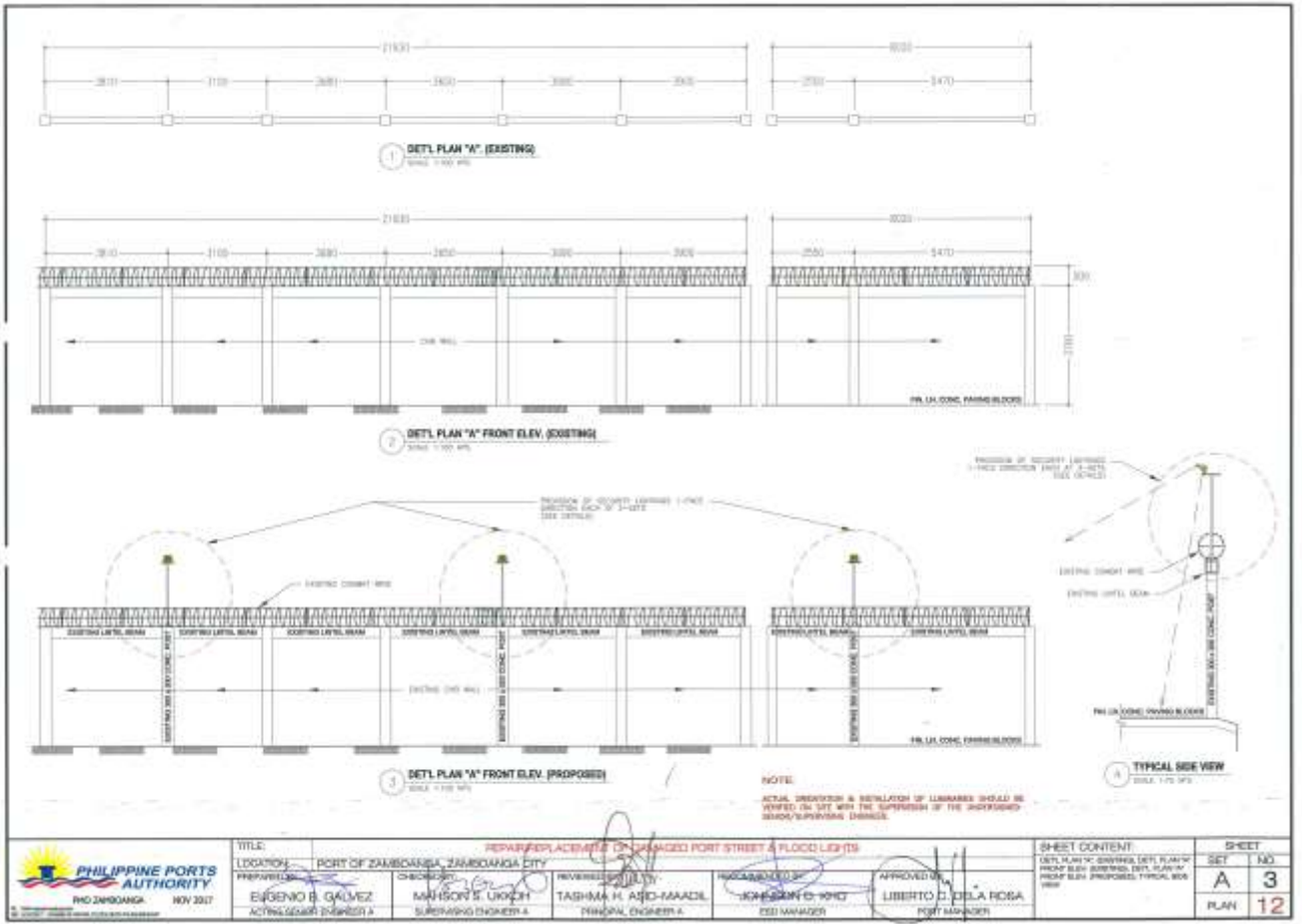
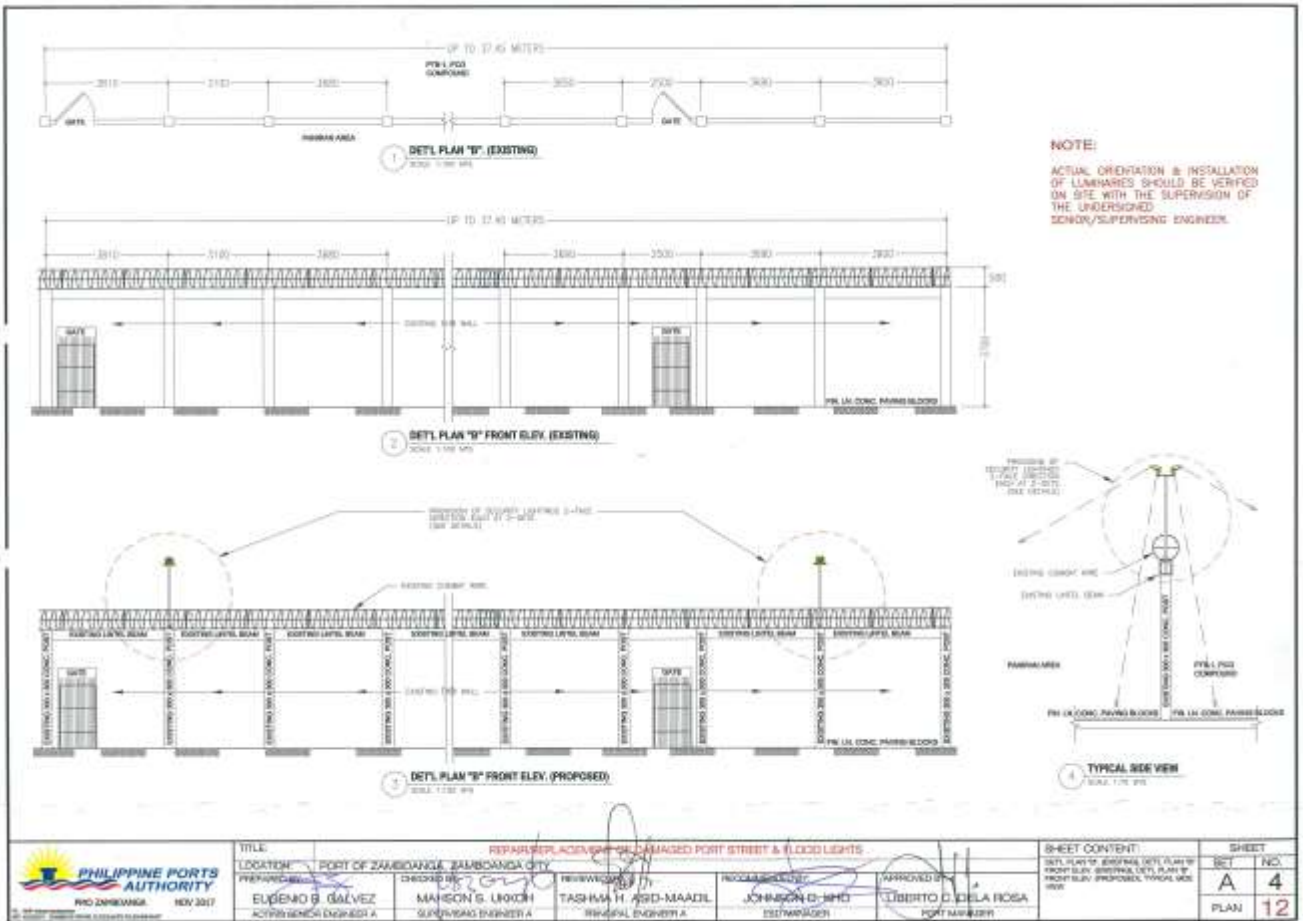


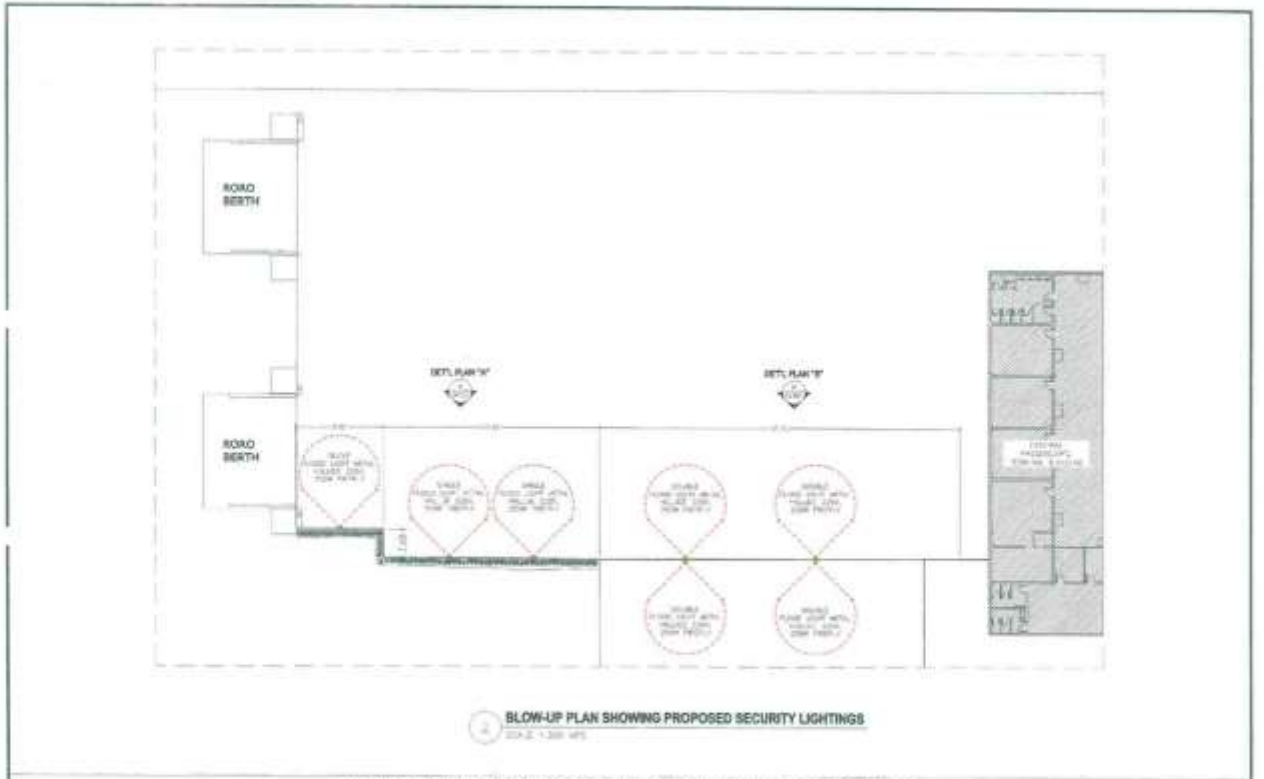


<p>PHILIPPINE PORTS AUTHORITY HQ ZAMBOANGA NOV 2017</p>	TITLE: REPAIR/REPLACE/REPLACEMENT OF DAMAGED PORT STREET & FLOOD LIGHTS	SHEET CONTENT: DETAIL PLANS OF ONE-ARM STREET LIGHT (4-UNITS), BLOW-UP PLAN, TYPICAL ELEVATION	SHEET NO. 6
	LOCATION: PORT OF ZAMBOANGA ZAMBOANGA CITY	DESIGNED BY: EUGENIO B. GALVEZ ACTING SENIOR ENGINEER A	SET NO. B
	PREPARED BY: EUGENIO B. GALVEZ ACTING SENIOR ENGINEER A	CHECKED BY: MAHSON S. URDICH SUPERVISING ENGINEER A	APPROVED BY: LIBERTO D. BELA ROSA RCM MANAGER

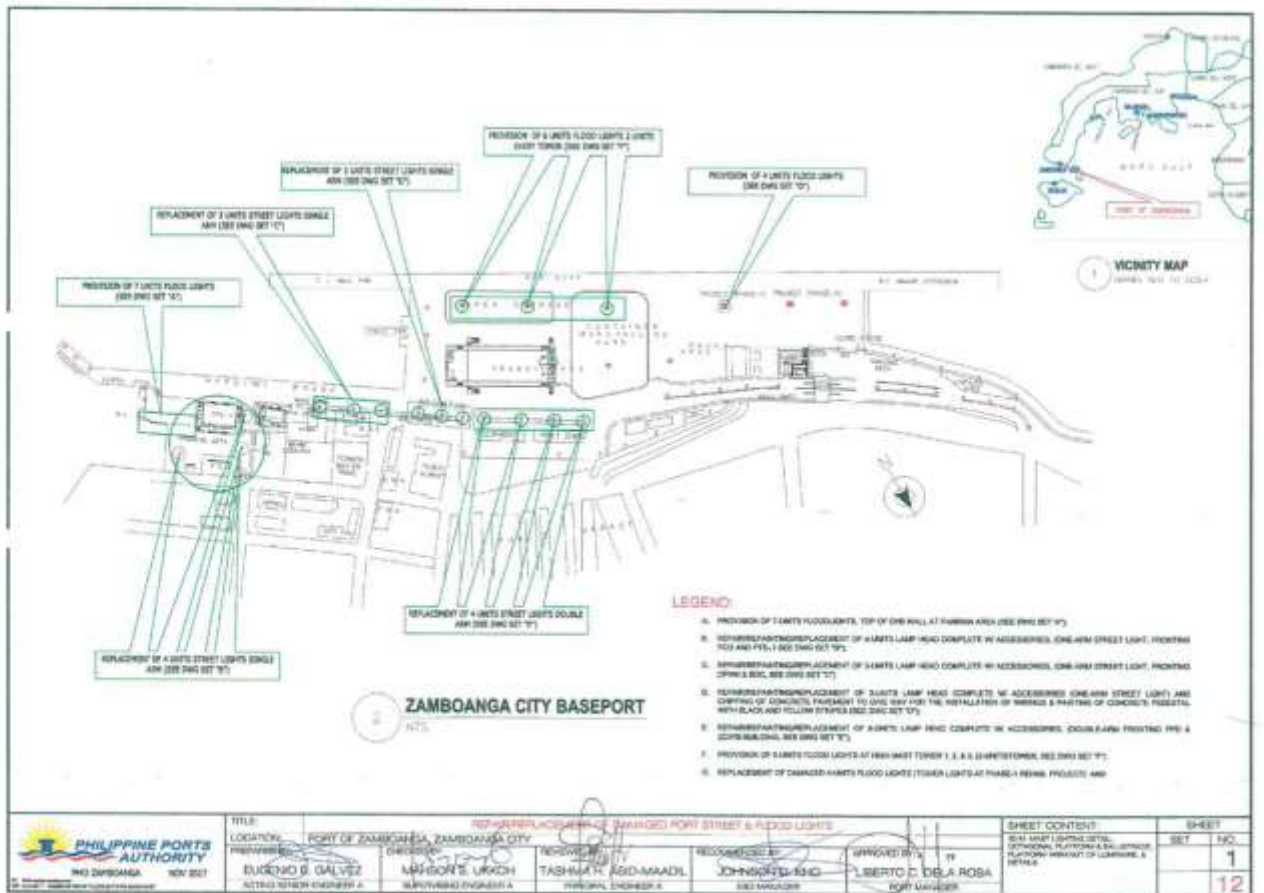


<p>PHILIPPINE PORTS AUTHORITY HQ ZAMBOANGA NOV 2017</p>	TITLE: REPAIR/REPLACE/REPLACEMENT OF DAMAGED PORT STREET & FLOOD LIGHTS	SHEET CONTENT: FLOODLIGHT HANDLE DETAIL, BASE PLATE CONNECTION DETAIL PLAN, FLOODLIGHT MOUNTING ON PLATFORM, TYP. SIDE VIEW FOR SINGLE/DOUBLE FLOODLIGHTS, SCHEMATIC DIAGRAM	SHEET NO. 5
	LOCATION: PORT OF ZAMBOANGA ZAMBOANGA CITY	DESIGNED BY: EUGENIO B. GALVEZ ACTING SENIOR ENGINEER A	SET NO. A
	PREPARED BY: EUGENIO B. GALVEZ ACTING SENIOR ENGINEER A	CHECKED BY: MAHSON S. URDICH SUPERVISING ENGINEER A	APPROVED BY: LIBERTO D. BELA ROSA RCM MANAGER





PROPOSED PROVISION OF SECURITY LIGHTINGS AT PANIRAN AREA						SHEET CONTENT	SHEET		
 <b>PHILIPPINE PORTS AUTHORITY</b> <small>INCORPORATED IN THE PHILIPPINES</small> <small>NOV 2007</small>	TITLE	REPAIR/REPLACEMENT OF DAMAGED PORT STREET & FLOOD LIGHTS				SHEET CONTENT	SHEET		
	LOCATION	PORT OF ZAMBOANGA, ZAMBOANGA CITY						SHEET NO.	SHEET NO.
	PROPOSER	DESIGNER	REVISOR	RECOMMENDED BY	APPROVED BY				
EUGENIO B. GALVEZ ACTING SENIOR ENGINEER - A	MARICOR S. URSOCH SUPERVISOR ENGINEER - A	TASHARA T. ASO-MAADIL PROFESSIONAL ENGINEER - A	JOHN ROBERTO S. SINGO SSE ENGINEER	LIBERTO C. DELA ROSA SSE ENGINEER	A	2			
						SECURITY LIGHTING	12		



REPAIR/REPLACEMENT OF DAMAGED PORT STREET & FLOOD LIGHTS						SHEET CONTENT	SHEET		
 <b>PHILIPPINE PORTS AUTHORITY</b> <small>INCORPORATED IN THE PHILIPPINES</small> <small>NOV 2007</small>	TITLE	REPAIR/REPLACEMENT OF DAMAGED PORT STREET & FLOOD LIGHTS				SHEET CONTENT	SHEET		
	LOCATION	PORT OF ZAMBOANGA, ZAMBOANGA CITY						SHEET NO.	SHEET NO.
	PROPOSER	DESIGNER	REVISOR	RECOMMENDED BY	APPROVED BY				
EUGENIO B. GALVEZ ACTING SENIOR ENGINEER - A	MARICOR S. URSOCH SUPERVISOR ENGINEER - A	TASHARA T. ASO-MAADIL PROFESSIONAL ENGINEER - A	JOHN ROBERTO S. SINGO SSE ENGINEER	LIBERTO C. DELA ROSA SSE ENGINEER	A	1			
						SECURITY LIGHTING CONCRETE FLOORING FLYING DECK OF LIGHTING & DETAILS	12		