



Name of Contract : REPAIR OF FACADE AND ELEVATED STEEL CANOPY AT NEW PICO BUILDING  
 Location of Project : Port of Iligan, Iligan City  
 Reference Number : CW 002- 2023

### QUOTATION (BILL OF QUANTITIES)

Project Name : REPAIR OF FACADE AND ELEVATED STEEL CANOPY AT NEW PICO BUILDING  
 Project Location : Port of Iligan, Iligan City

ITEM NO.	DESCRIPTION	UNIT	QUANTITY	UNIT PRICE (Pesos)	AMOUNT (Pesos)
I	<b>Chipping-off,Excavate and Removal of Existing Structures</b>	lot	1.00	P	P
Chipping-off concrete portion and excavate existing flooring prior for foundation.This is to include disposal of unnecessary debris as indicated in the plan.					
(Pesos					
II	<b>Supply and Place Filling Materials</b>	cu.m.	3.00	P	P
Supply and place fill materials up to required elevation as indicated in the plan					
(Pesos					
III	<b>Supply and Place Concrete (3,500 psi)</b>	cu.m.	7.00	P	P
Supply and place concrete for concrete footings,column and affected concrete flooring as indicated in the plan					
(Pesos					
IV	<b>Supply and Install Reinforcing Bars</b>	kgs.	350.00	P	P
Supply and install reinforcements for concrete footings,pedestal,affected concrete flooring and etc. as indicated in the plan					
(Pesos					
V	<b>Supply and Install Steel Framing Accessories</b>	lot	1.00	P	P
Supply and install various G.I. post and steel roof framing accessories as indicated in the plan.					
(Pesos					
<b>SUB - TOTAL A</b>					<b>P</b>

page 1 of 2

SUBMITTED BY :

NAME OF THE REPRESENTATIVE OF THE BIDDER

NAME OF BIDDER



Name of Contract : REPAIR OF FACADE AND ELEVATED STEEL CANOPY AT NEW PICO BUILDING  
 Location of Project : Port of Iligan, Iligan City  
 Reference Number : CW 002- 2023

## QUOTATION (BILL OF QUANTITIES)

Project Name : REPAIR OF FACADE AND ELEVATED STEEL CANOPY AT NEW PICO BUILDING

Project Location : Port of Iligan, Iligan City

ITEM NO.	DESCRIPTION	UNIT	QUANTITY	UNIT PRICE (Pesos)	AMOUNT (Pesos)
VI	<b>Supply and Install of Various Roof Panels &amp; Accessories</b>	lot	1.00	P	P
Supply and install various roof panels to include installation of PVC pipe downspouts as indicated in the plan					
(Pesos)					
VII	<b>Masonry Works and other Finishes</b>	lot	1.00	P	P
Supply, deliver and install 4" thk. Concrete hollow blocks with reinforcements including mortar and plastering finishes. Install also PPA designated logos and signages as indicated in the plan					
(Pesos)					
VIII	<b>Painting Works</b>	sq.m.	190.00	P	P
Surface preparation and application of 1 primer paint and 2 coats of final paint on all masonry and steel surfaces as indicated in the plan.					
(Pesos)					
IX	<b>Electrical Works</b>	lot	1.00	P	P
Supply and install various electrical lightings and wirings, including tapping to existing power connection as per plan and specifications					
(Pesos)					
X-X-X-X-X-X-X-X-X-X-X-X-					
<b>SUB - TOTAL B</b>					<b>P</b>
<b>GRAND TOTAL</b>					<b>P</b>

IN WORDS : \_\_\_\_\_  
 \_\_\_\_\_  
 \_\_\_\_\_

CALENDAR DAYS TO COMPLETE : 80 CD

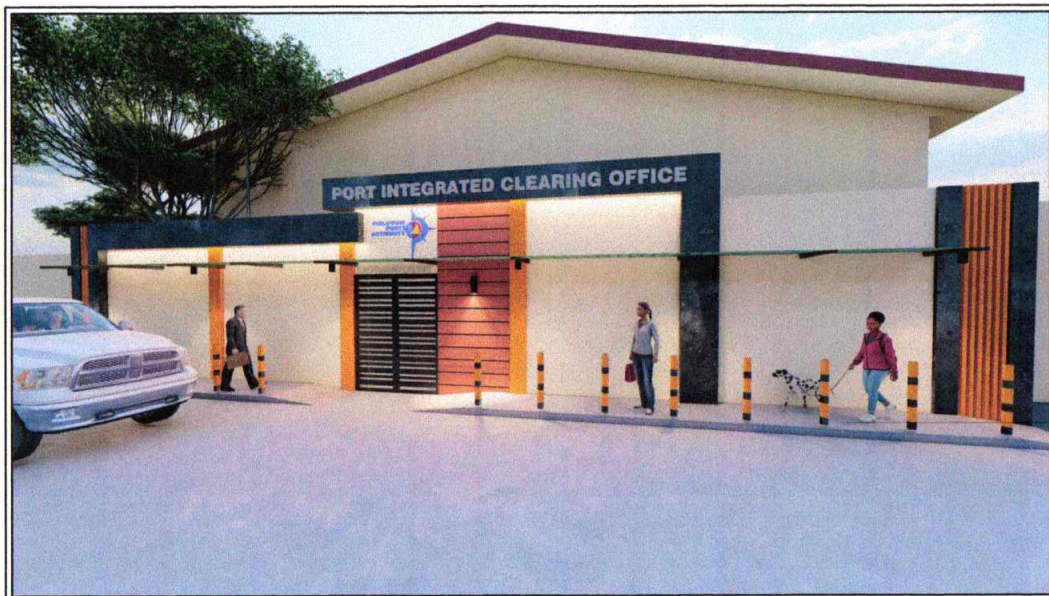
NOTE : 1 For Labor, Material and Equipments  
 2 For details please refer to the Engineering Services Division

SUBMITTED BY :

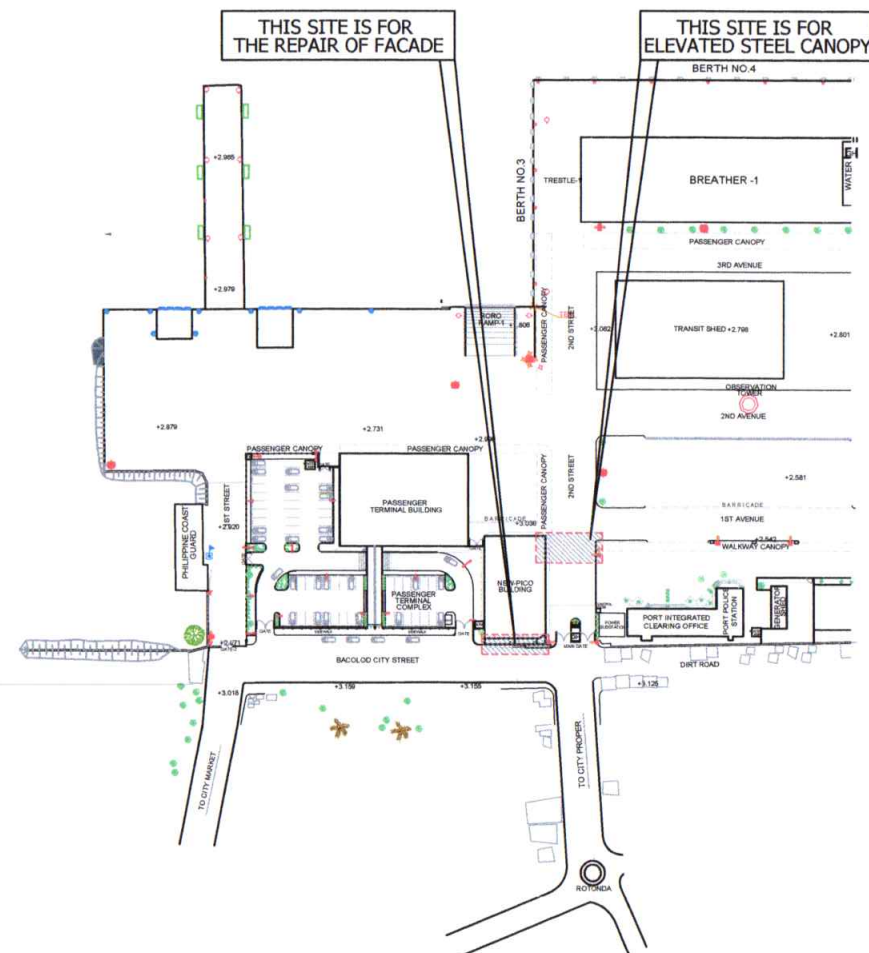
NAME OF THE REPRESENTATIVE OF THE BIDDER

NAME OF BIDDER





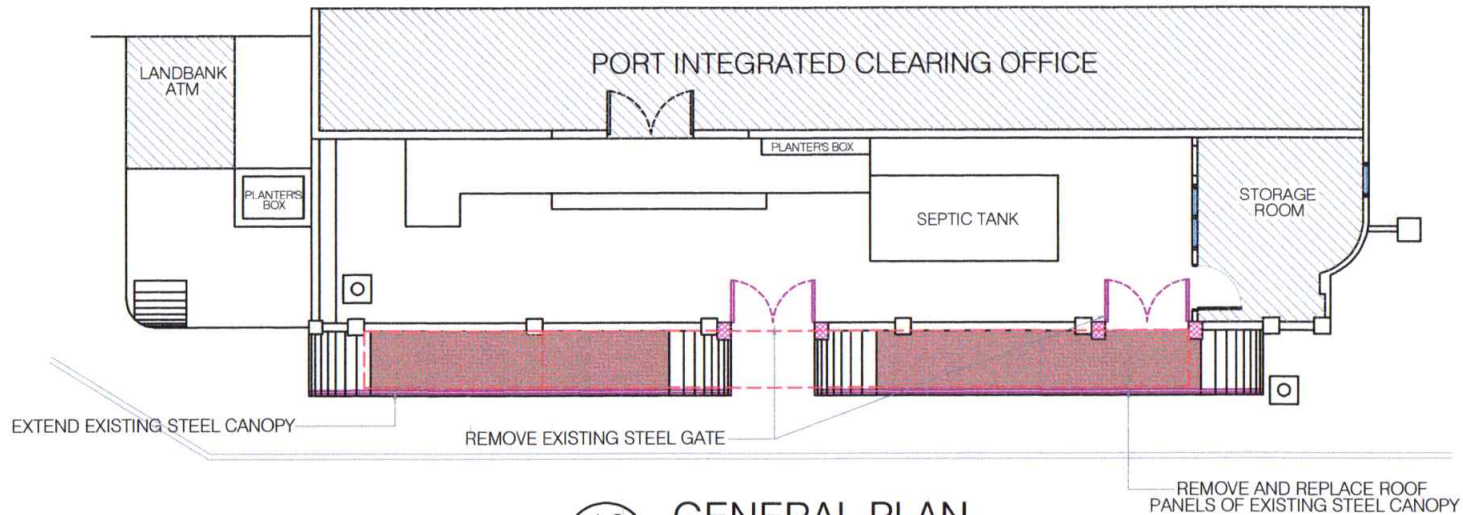
**A1** PERSPECTIVE VIEW  
SCALE: NTS.



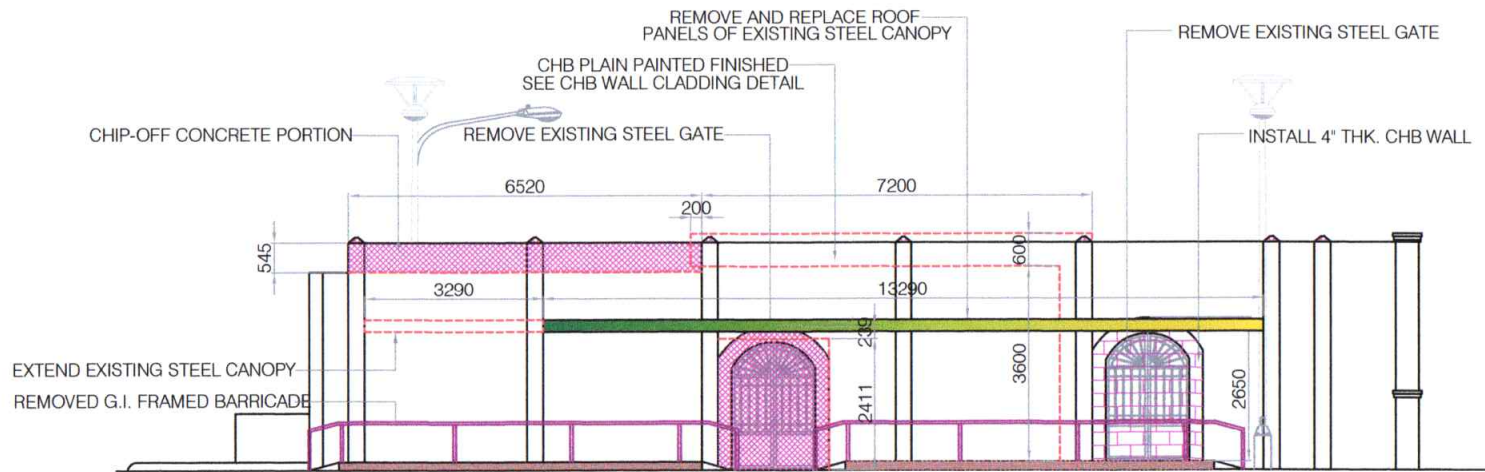
**A1** SITE DEVELOPMENT PLAN  
SCALE: NTS.



TITLE:	<b>REPAIR OF FACADE AND ELEVATED STEEL CANOPY AT NEW PICO BUILDING</b>				ARCHITECTURAL	SHEET NO. <b>1</b> <b>8</b>
LOCATION:	PORT OF ILIGAN, ILIGAN CITY				SHEET CONTENTS	
PREPARED BY:	CHECKED BY:	RECOMMENDED BY:	APPROVED:		<ul style="list-style-type: none"> <li>PERSPECTIVE VIEW</li> <li>SITE DEVELOPMENT PLAN</li> </ul>	
SGD. <b>ARNEL C. OCLARINO</b> Senior Engineer A	SGD. <b>COLIN KAY R. CAJOTE</b> Supervising Engineer A	SGD. <b>JOEL B. ESCALA</b> ESD Manager	SGD. <b>MEDARDO I. SOSOBRAO, JR.</b> Acting Port Manager			



**A2 GENERAL PLAN**  
SCALE: 1:100



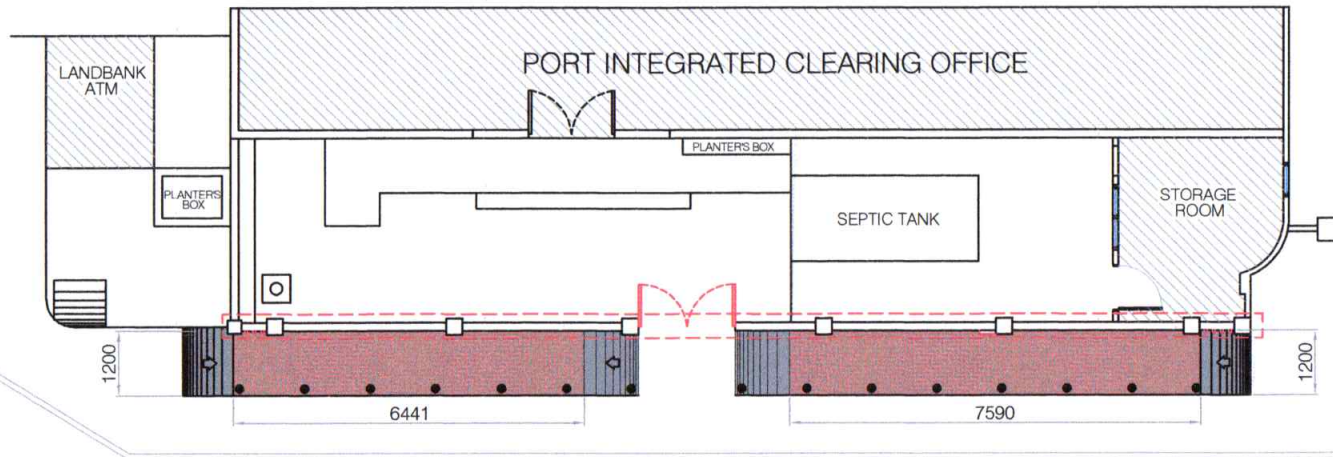
**A2 FRONT ELEVATION**  
SCALE: 1:100  
**@ NEW PICO FACADE**



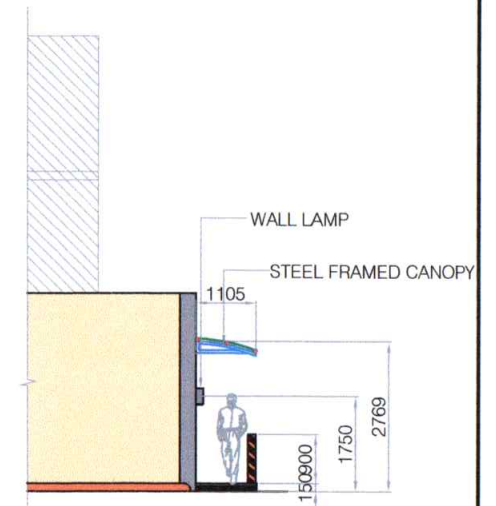
TITLE: <b>REPAIR OF FACADE AND ELEVATED STEEL CANOPY AT NEW PICO BUILDING</b>		ARCHITECTURAL	
LOCATION: <b>PORT OF ILIGAN, ILIGAN CITY</b>		SHEET CONTENTS	
PREPARED BY: SGD <b>ARNEL C. OCLARINO</b> Senior Engineer A	CHECKED BY: SGD <b>COLIN KAY R. CAJOTE</b> Supervising Engineer A	RECOMMENDED BY: SGD <b>JOEL B. ESCALA</b> ESD Manager	APPROVED: SGD <b>MEDARDO I. SOSOBRAO, JR.</b> Acting Port Manager

<ul style="list-style-type: none"> <li>● GENERAL PLAN</li> <li>● FRONT ELEVATION</li> </ul>
---

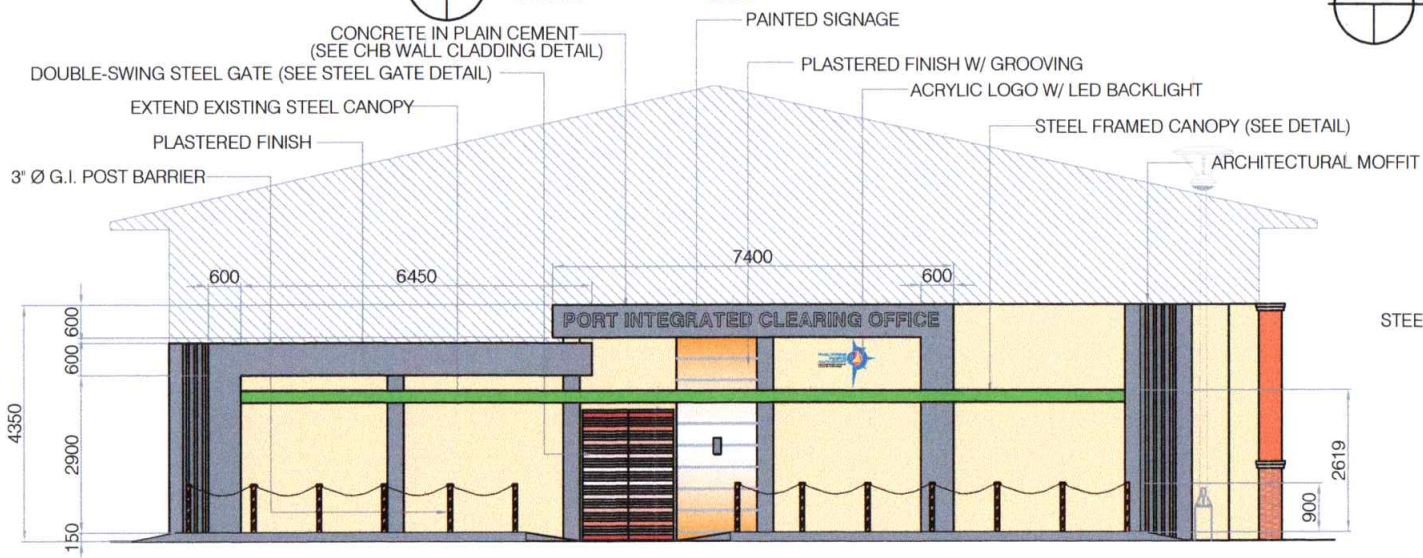




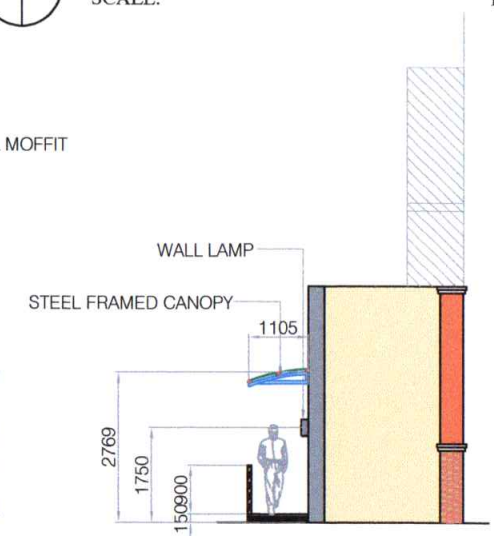
**A3 FLOOR PLAN**  
SCALE: 1:100



**A3 LEFT SIDE ELEVATION**  
SCALE: 1:100



**A3 FRONT ELEVATION**  
SCALE: 1:100



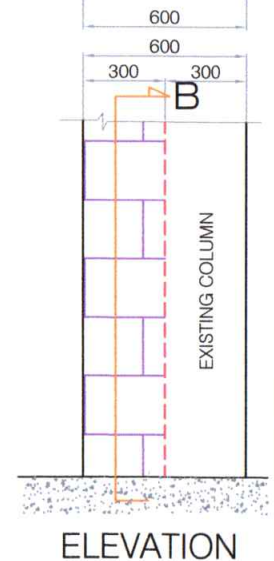
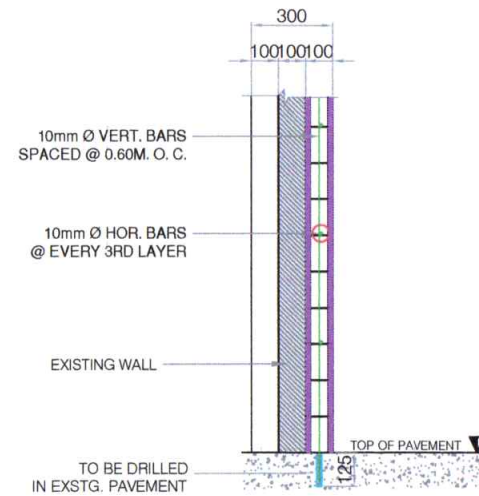
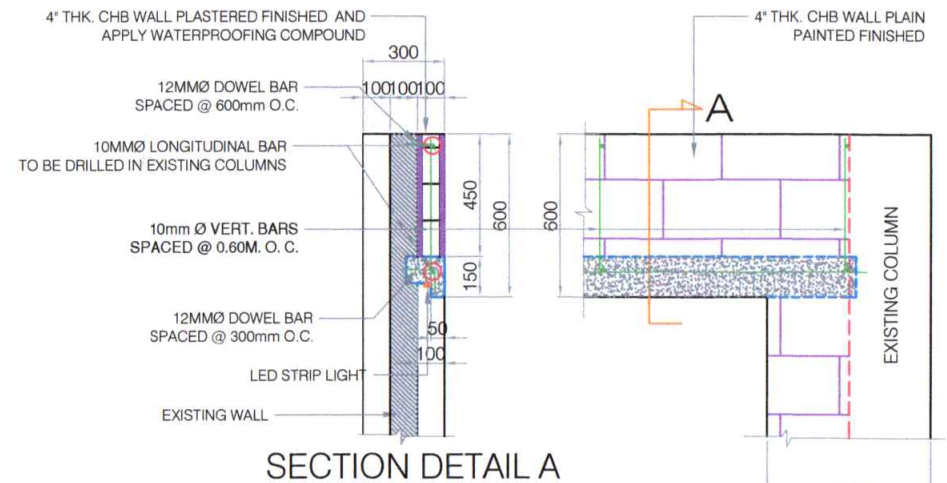
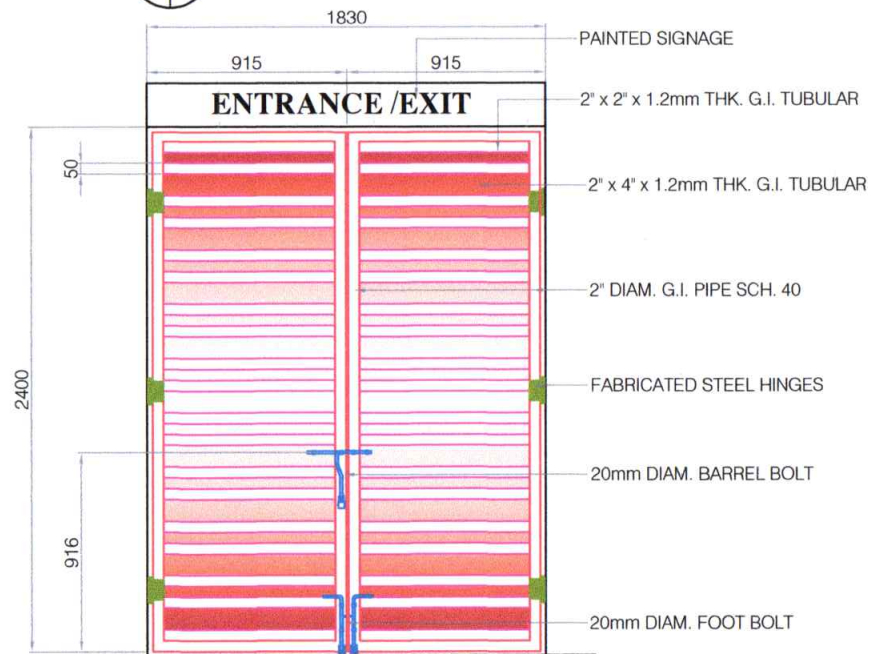
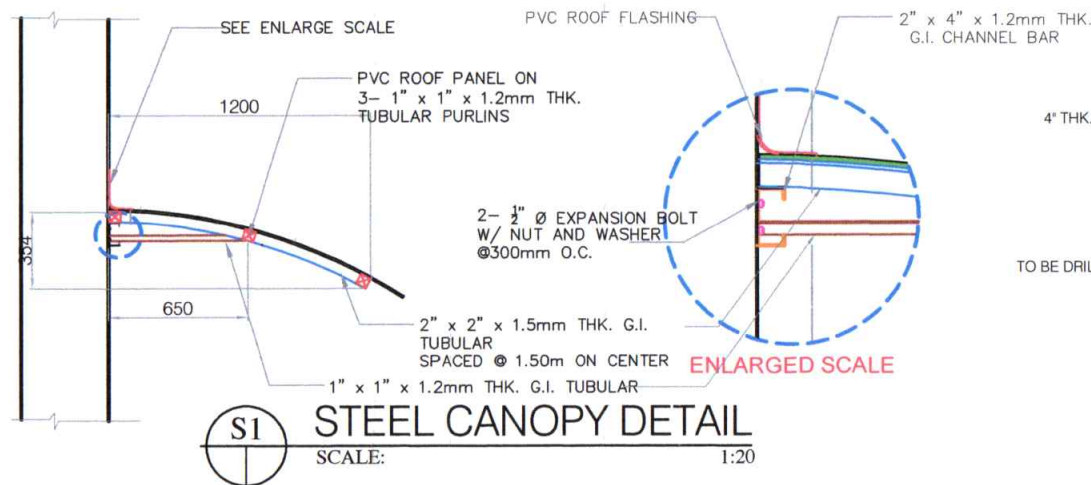
**A3 RIGHT SIDE ELEVATION**  
SCALE: 1:100

## ELEVATED CANOPY



TITLE:	REPAIR OF FACADE AND ELEVATED STEEL CANOPY AT NEW PICO BUILDING				ARCHITECTURAL	SHEET NO.
LOCATION:	PORT OF ILIGAN, ILIGAN CITY				SHEET CONTENTS	<div><div>3</div><div>8</div></div>
PREPARED BY:	CHECKED BY:	RECOMMENDED BY:	APPROVED:			
SGD. ARNEL C. OCLARINO Senior Engineer A	SGD. COLIN KAY R. CAJOTE Supervising Engineer A	SGD. JOEL B. ESCALA ESD Manager	SGD. MEDARDO I. SOSOBRADO, JR. Acting Port Manager			

- GENERAL PLAN
- FRONT ELEVATION
- RIGHT SIDE ELEVATION
- LEFT SIDE ELEVATION



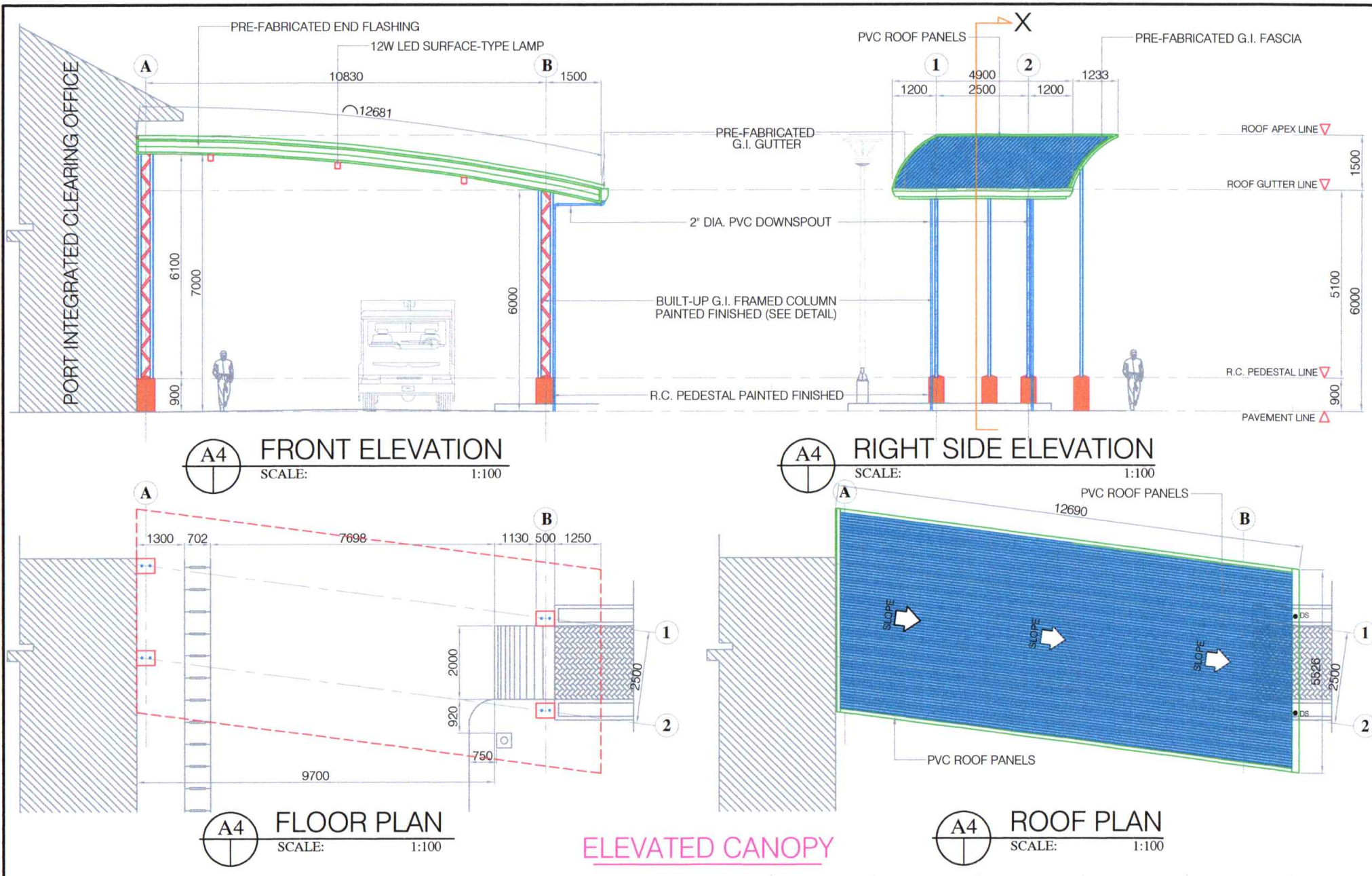
**CHB WALL CLADDING DETAIL**  
SCALE: 1:20

**ELEVATED CANOPY**



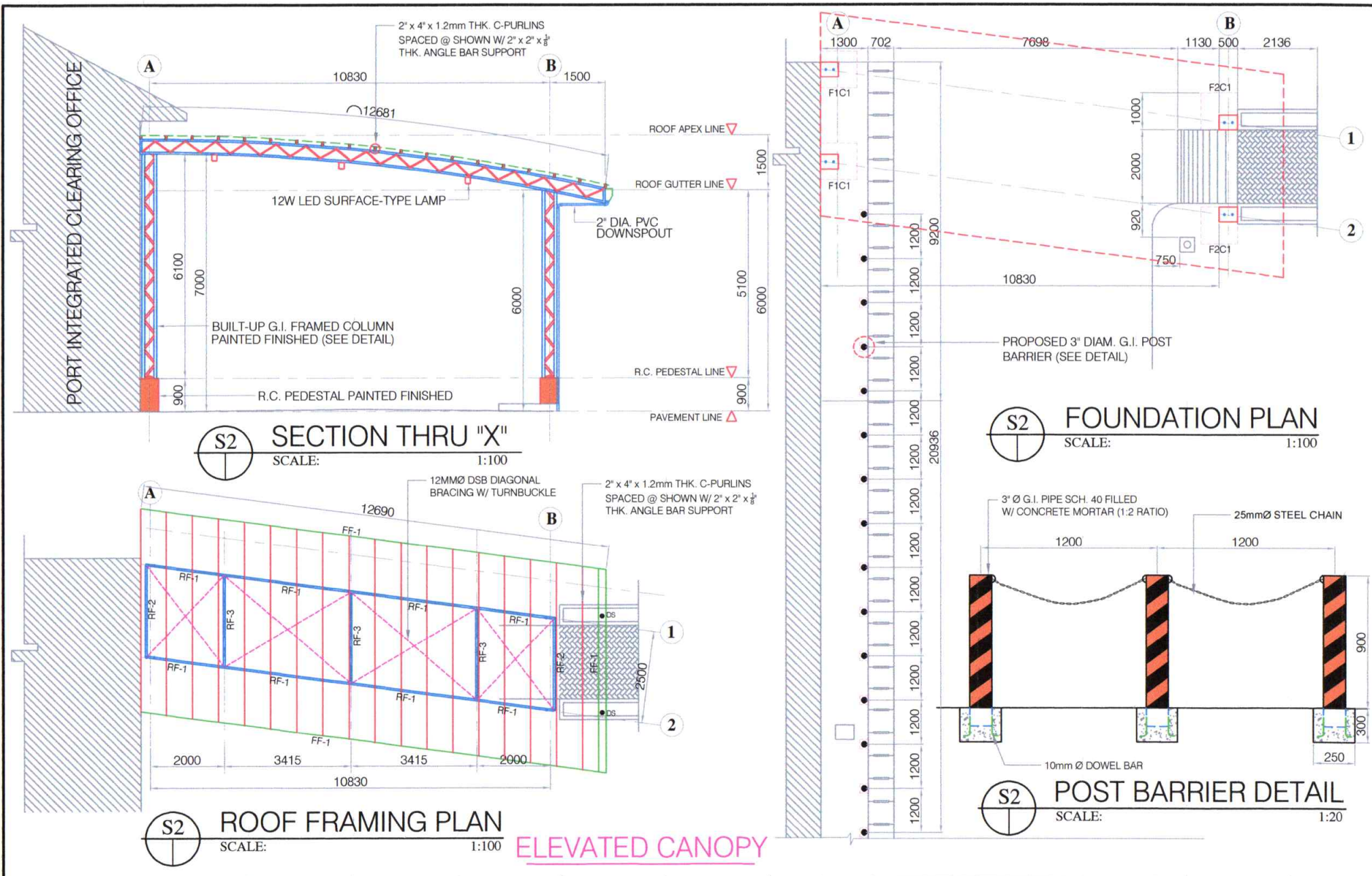
TITLE:		REPAIR OF FACADE AND ELEVATED STEEL CANOPY AT NEW PICO BUILDING				STRUCTURAL		SHEET NO.			
LOCATION:		PORT OF ILIGAN, ILIGAN CITY				SHEET CONTENTS		<div><div>4</div><div>8</div></div>			
PREPARED BY:		CHECKED BY:		RECOMMENDED BY:		APPROVED:				<ul style="list-style-type: none"><li>● STEEL CANOPY DETAIL</li><li>● STEEL GATE DETAIL</li><li>● CHB WALL CLADDING DETAIL</li></ul>	
SGD. ARNEL C. OCLARINO		SGD. COLIN KAY R. CAJOTE		SGD. JOEL B. ESCALA		SGD. MEDARDO I. SOSOBRAPO, JR.					
Senior Engineer A		Supervising Engineer A		ESD Manager		Acting Port Manager					





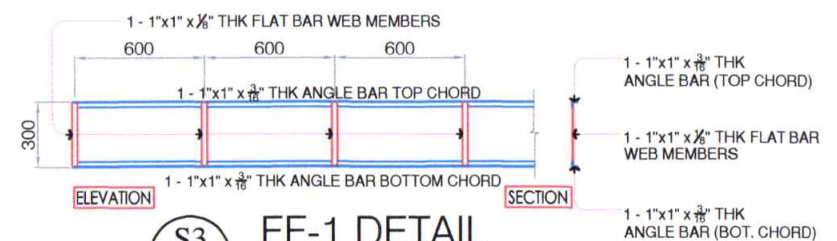
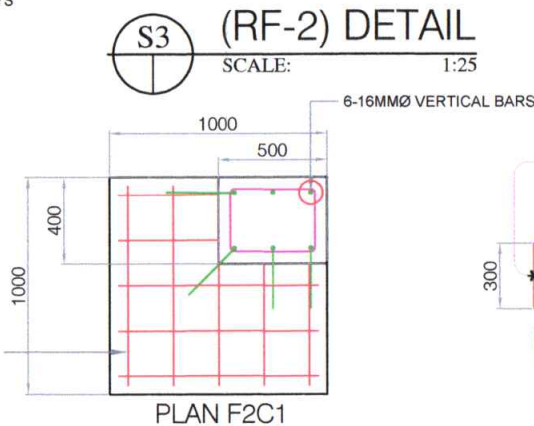
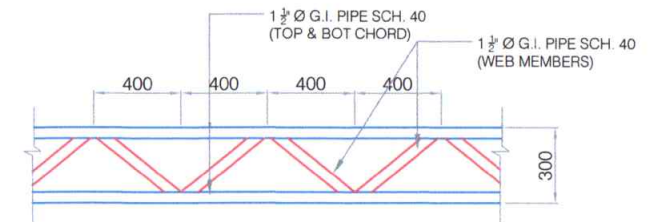
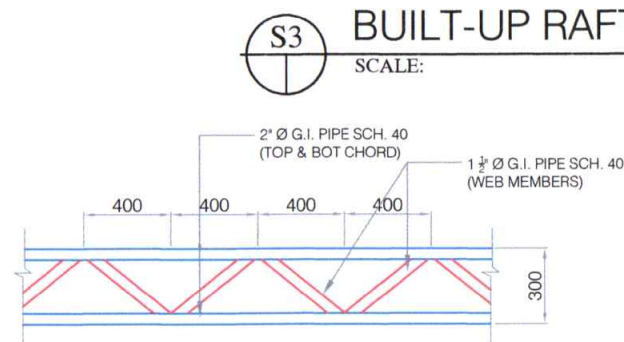
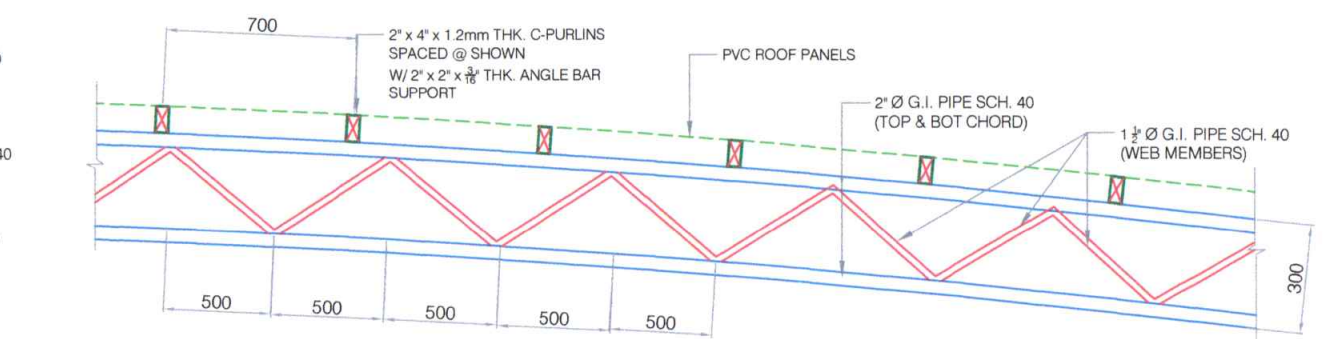
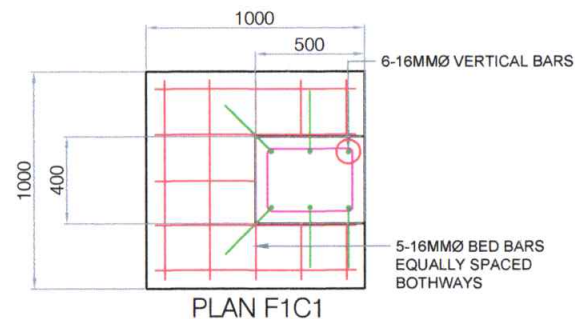
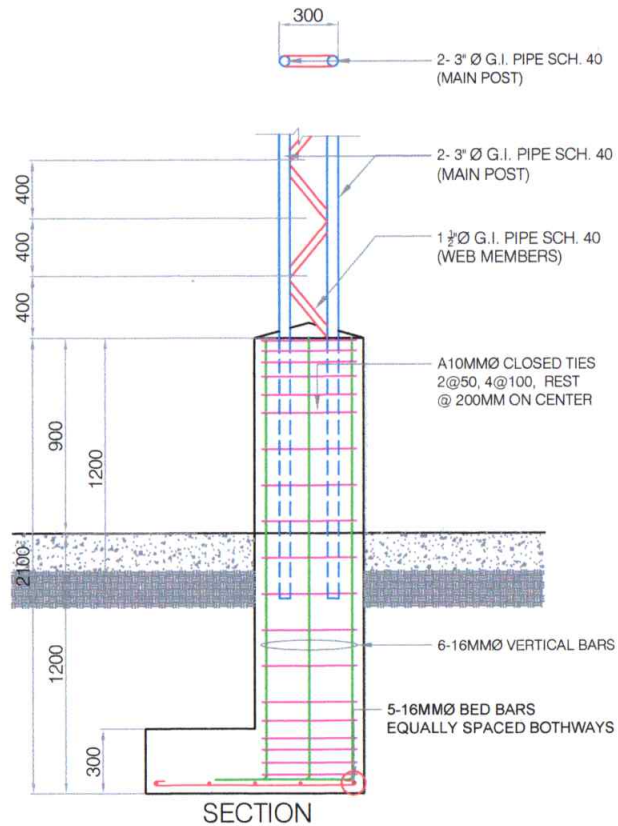
TITLE:		REPAIR OF FACADE AND ELEVATED STEEL CANOPY AT NEW PICO BUILDING				ARCHITECTURAL		SHEET NO.	
LOCATION:		PORT OF ILIGAN, ILIGAN CITY				SHEET CONTENTS		<div>58</div>	
PREPARED BY:		CHECKED BY:		RECOMMENDED BY:		APPROVED:			
SGD. ARNEL C. OCLARINO Senior Engineer A		SGD. COLIN KAY R. CAJOTE Supervising Engineer A		SGD. JOEL B. ESCALA ESD Manager		SGD. MEDARDO I. SOSOBRAO, JR. Acting Port Manager			
						<ul style="list-style-type: none"><li>● FLOOR PLAN</li><li>● FRONT ELEVATION</li><li>● RIGHT SIDE ELEVATION</li><li>● ROOF PLAN</li></ul>			





<b>TITLE:</b> <b>REPAIR OF FACADE AND ELEVATED STEEL CANOPY AT NEW PICO BUILDING</b>	<b>STRUCTURAL</b>			<b>SHEET NO.</b>
<b>LOCATION:</b> PORT OF ILIGAN, ILIGAN CITY	<b>SHEET CONTENTS</b> <ul style="list-style-type: none"> <li>● SECTION THRU "X"</li> <li>● ROOF FRAMING PLAN</li> <li>● FOUNDATION PLAN</li> </ul>			
<b>PREPARED BY:</b> SGD. <b>ARNEL C. OCLARINO</b> Senior Engineer A	<b>CHECKED BY:</b> SGD. <b>COLIN KAY R. CAJOTE</b> Supervising Engineer A	<b>RECOMMENDED BY:</b> SGD. <b>JOEL B. ESCALA</b> ESD Manager	<b>APPROVED:</b> SGD. <b>MEDARDO I. SOSOBRAPO, JR.</b> Acting Port Manager	<div style="border: 1px solid black; border-radius: 50%; width: 40px; height: 40px; display: flex; align-items: center; justify-content: center; margin: 0 auto;"> <div style="border-bottom: 1px solid black; width: 100%; text-align: center;">6</div> <div style="width: 100%; text-align: center;">8</div> </div>





**COLUMN AND FOOTING DETAIL**  
SCALE: 1:25

ELEVATED CANOPY










TITLE: <b>REPAIR OF FACADE AND ELEVATED STEEL CANOPY AT NEW PICO BUILDING</b>		STRUCTURAL		SHEET NO.
LOCATION: <b>PORT OF ILIGAN, ILIGAN CITY</b>		SHEET CONTENTS		7 8
PREPARED BY: SGD <b>ARNEL C. OCLARINO</b> Senior Engineer A	CHECKED BY: SGD <b>COLIN KAY R. CAJOTE</b> Supervising Engineer A	RECOMMENDED BY: SGD <b>JOEL B. ESCALA</b> ESD Manager	APPROVED: SGD <b>MEDARDO I. SOSOBRAPO, JR.</b> Acting Port Manager	

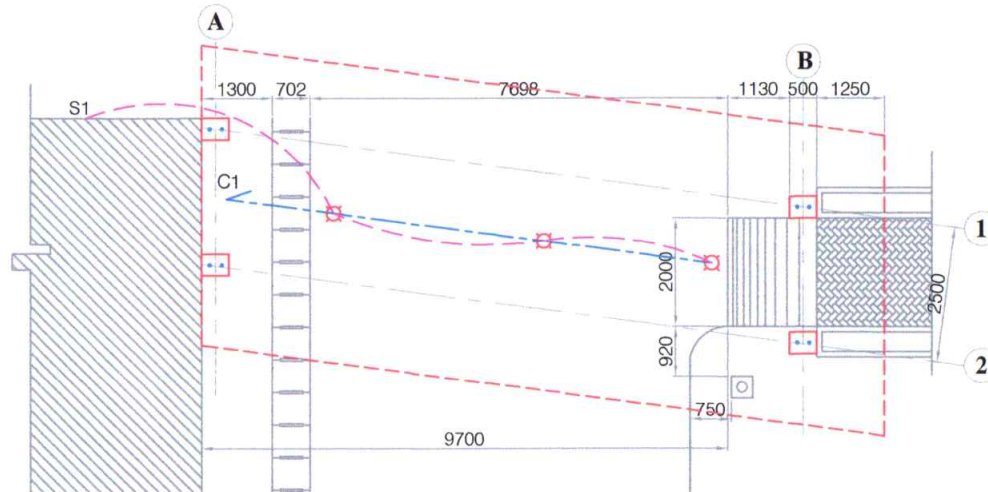
- COLUMN AND FOOTING DETAIL
- BUILT-UP RAFTER (RF-1) DETAIL
- (RF-2) & (FF-1) DETAIL
- POST BARRIER DETAIL

## GENERAL NOTES & SPECIFICATIONS

1. ALL ELECTRICAL WORKS AND INSTALLATION SHALL COMPLY WITH THE PROVISIONS OF THE LATEST EDITION OF THE PHILIPPINE ELECTRICAL CODE (PEC) WITH THE RULES AND REGULATIONS OF THE NATIONAL AND LOCAL AUTHORITIES CONCERNED.
2. SERVICE VOLTAGE TO THE BUILDING SHALL BE 220 VOLTS, 60 HERTZ, THREE PHASE.
3. ALL INSTALLATION SHALL BE CONCEALED FROM VIEW, WIRING SHALL BE INCASE IN POLYVINYL CHLORIDE (PVC) PIPE SCHEDULE 40.
4. MINIMUM WIRE AND CONDUIT SIZE SHALL BE NO. 12 AWG TW AND  $\frac{1}{2}$  Ø PVC TRADE SIZE, RESPECTIVE UNLESS OTHERWISE NOTED.
5. ALL MATERIALS TO BE USED SHALL BE NEW AND APPROVED TYPE, APPROPRIATE FOR BOTH LOCATION AND INTENDED USE.
6. NO BRAND CIRCUIT SHALL HAVE A LOAD MORE THAN 80% OF ITS RATING.
7. ALL ELECTRICAL INSTALLATIONS SHALL BE UNDER THE DIRECT SUPERVISION OF A DULY LICENSED ELECTRICAL ENGINEER, OR A MASTER ELECTRICIAN.

### LEGEND :

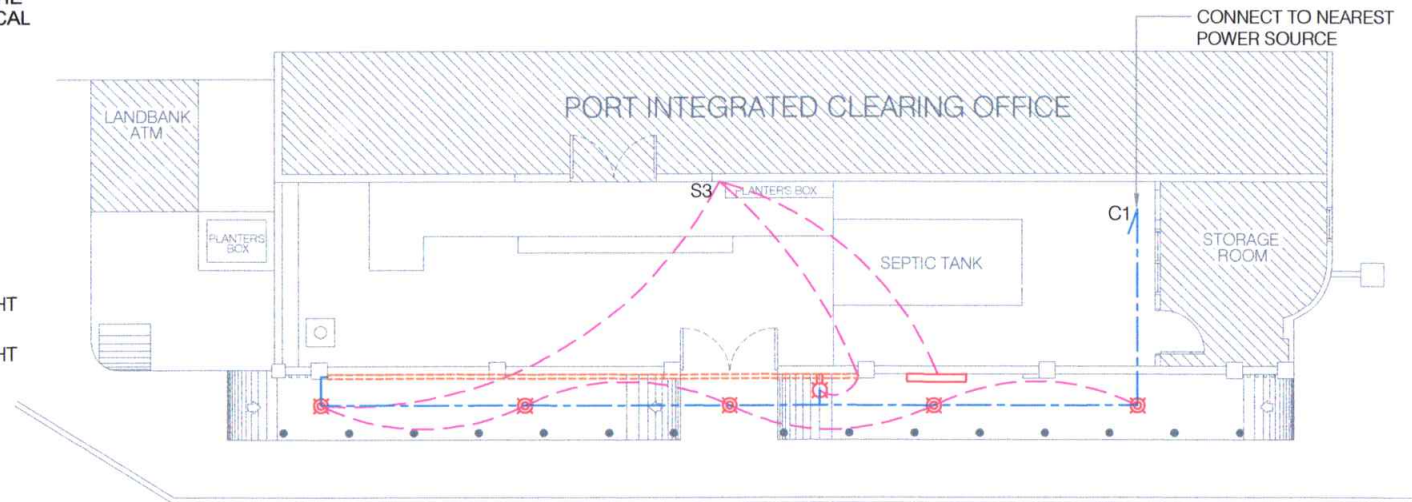
-  S<sub>3</sub> - 3 GANG SWITCH
-  S<sub>1</sub> - SINGLE SWITCH
-  - 7W LED WALL LAMP
-  - 12W LED SURFACE-TYPE DOWNLIGHT
-  - 10W LED SURFACE-TYPE DOWNLIGHT
-  - LED STRIPLIGHT
-  - LED LOGO SIGNAGE
- C1 - CIRCUIT HOMERUN



LIGHTING PLAN @ ELEVATED CANOPY

SCALE:

1:100



LIGHTING PLAN @ NEW PICO FACADE

SCALE:

1:100



TITLE:

REPAIR OF FACADE AND ELEVATED STEEL CANOPY AT NEW PICO BUILDING

LOCATION:

PORT OF ILIGAN, ILIGAN CITY

PREPARED BY:

SGD.  
ARNEL C. OCLARINO  
Senior Engineer A

CHECKED BY:

SGD.  
COLIN KAY R. CAJOTE  
Supervising Engineer A

RECOMMENDED BY:

SGD.  
JOEL B. ESCALA  
ESD Manager

APPROVED:

SGD.  
MEDARDO I. SOSOBRAO, JR.  
Acting Port Manager

ELECTRICAL

SHEET NO.

SHEET CONTENTS

- GENERAL NOTES, SPECS AND LEGEND
- LIGHTING PLAN @ ELEVATED CANOPY
- LIGHTING PLAN @ NEW PICO FACADE

8  
8