

**PHILIPPINE
PORTS
AUTHORITY**



PORT MANAGEMENT OFFICE - MARINDUQUE/QUEZON

CONSTRUCTION DRAWINGS

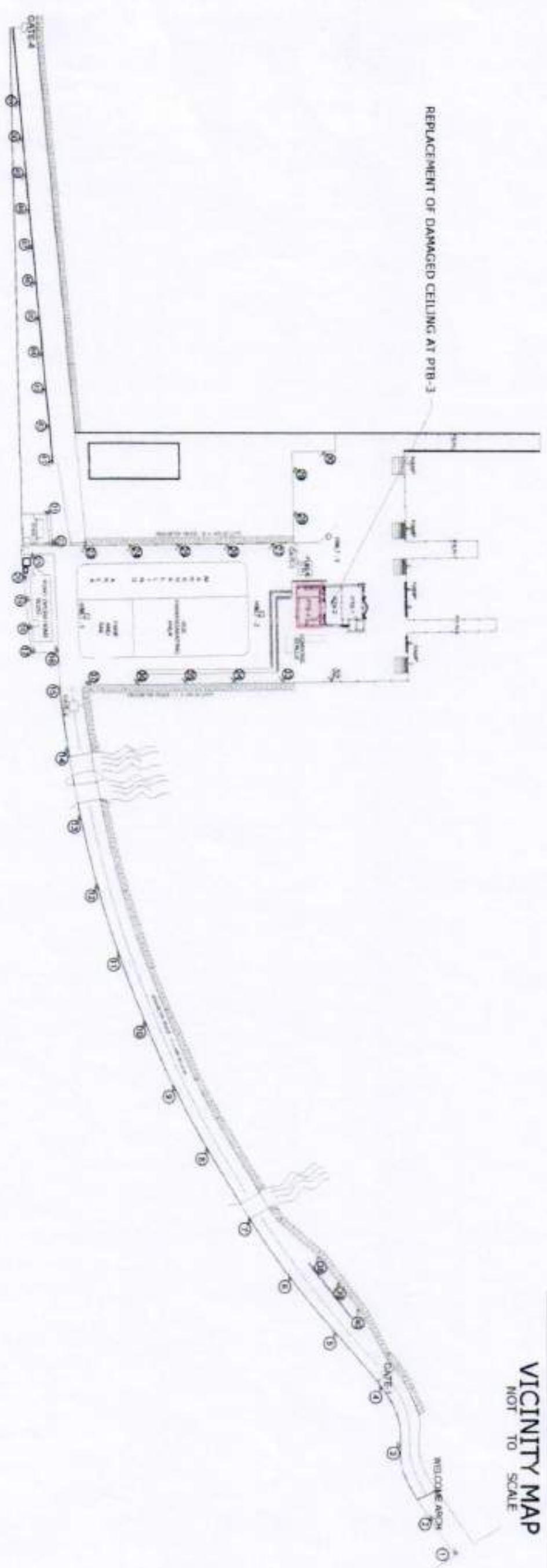
**REPLACEMENT OF DAMAGED
CEILING AT PTB - 3**

PORT OF LUCENA

LUCENA CITY



VICINITY MAP
NOT TO SCALE



DEVELOPMENT PLAN
SCALE 1:3,100 M

 <p>PHILIPPINE PORTS AUTHORITY</p> <p>PORT MANAGEMENT OFFICE - MARQUEZ</p>	<p>PROJECT/LOCATION:</p> <p>REPLACEMENT OF DAMAGED CEILING AT PTB - 3</p> <p>PORT OF LUCENA LUCENA CITY</p>	<p>PREPARED BY:</p> <p> MARK ANDREW S. PINEDA SENIOR ENGINEER A</p>	<p>REVIEWED/RECOMMENDING APPROVAL:</p> <p> PAUL A. LIBATIQUE ACTING ESD MANAGER</p>	<p>APPROVED:</p> <p> ELTSIO P. FORTAJADA PORT MANAGER</p>	<p>SHEET CONTENTS</p> <p>• DEVELOPMENT PLAN</p> <p>1 / 2</p>	<p>SHEET NO.</p>
---	--	--	--	--	---	------------------

REPLACE EXISTING CEILING
WITH 4" WIDTH PRE-PAINTED
SPANDREL CEILING

REPLACE EXISTING CEILING PANELS
WITH PERFORATED METAL PANELS



REPLACEMENT OF EXISTING CEILING
USE
• 4" WIDTH SPANDREL CEILING
AND METAL FURRING @ 0.60M
SPACING O.C.

SECTION "A"

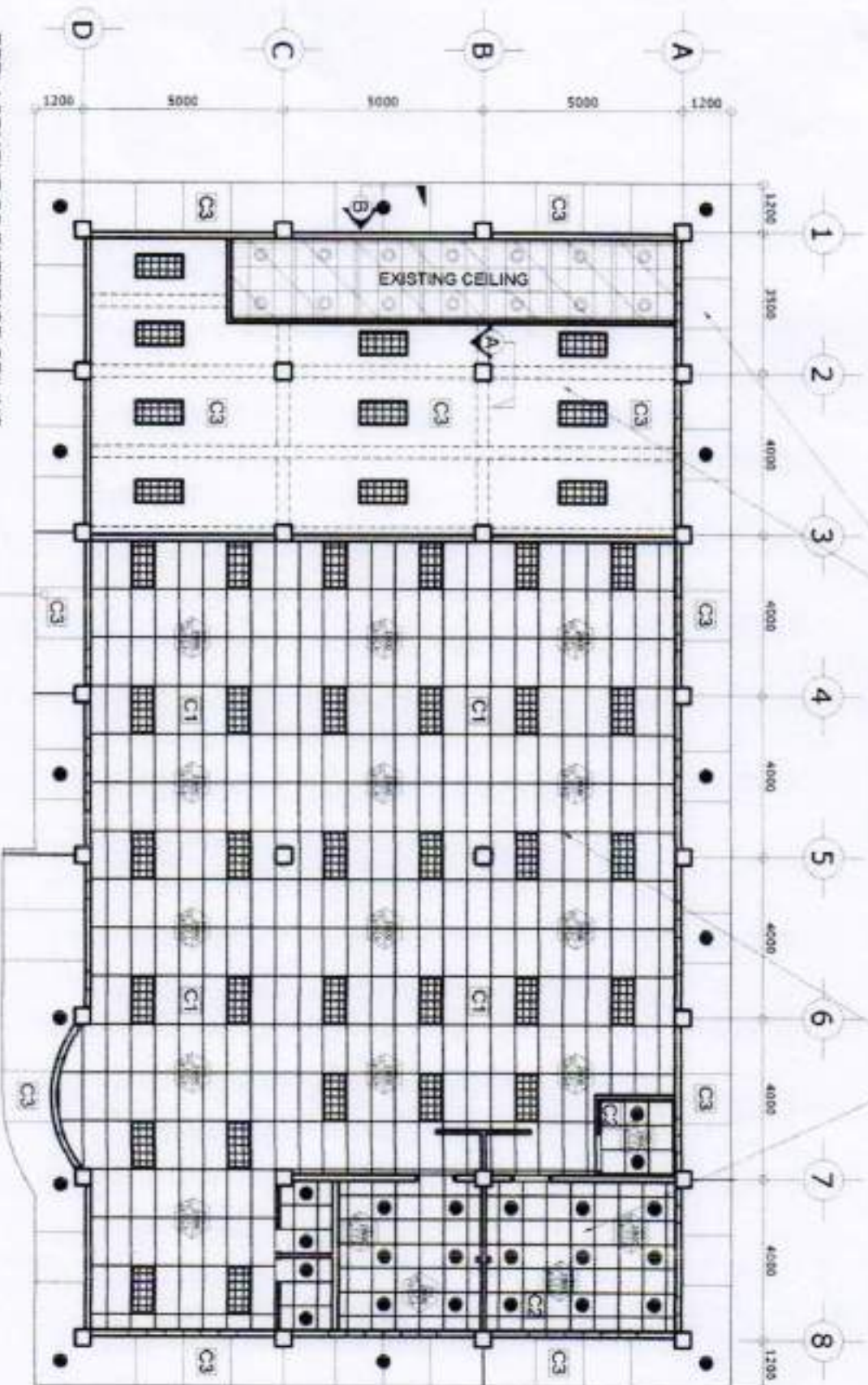
SCALE 1:20



REPLACEMENT OF EXISTING CEILING
USE
• 4" WIDTH SPANDREL CEILING
AND METAL FURRING @ 0.60M
SPACING O.C.

SECTION "B"

SCALE 1:20



REPLACEMENT OF EXTERIOR CEILING
USE
• 4" WIDTH SPANDREL CEILING
AND METAL FURRING @ 0.60M
SPACING O.C.

PTB-3 REFLECTED CEILING PLAN

SCALE 1:150

LEGEND:

- C1 PERFORATED METAL PANELS, 2' x 4' x 0.70 mm.,
BONE WHITE, OR EQUIVALENT
- C2 PERFORATED METAL PANELS, 2' x 2' x 0.70 mm.,
BONE WHITE, OR EQUIVALENT
- C3 4" WIDTH PRE-PAINTED SPANDREL
CEILING GA. #26 0.6mm THK.
AND METAL FURRING @ 0.60M SPACING O.C.

1:3,100 M



REPLACEMENT OF DAMAGED CEILING AT PTB-3

PROJECT/LOCATION:
PORT OF LUCENA
LUCENA CITY

PREPARED BY:
MARK ANDREW S. PINEDA
SENIOR ENGINEER A

REVIEWED/RECOMMENDING APPROVAL:
RAJA A. LIBATIQUE
ACTING ESD MANAGER

APPROVED:
FAR-ELINGIO P. FORTAJADA
PORT MANAGER

SHEET CONTENTS
• PTB-3 REFLECTED
CEILING PLAN

SHEET NO.
2 / 2