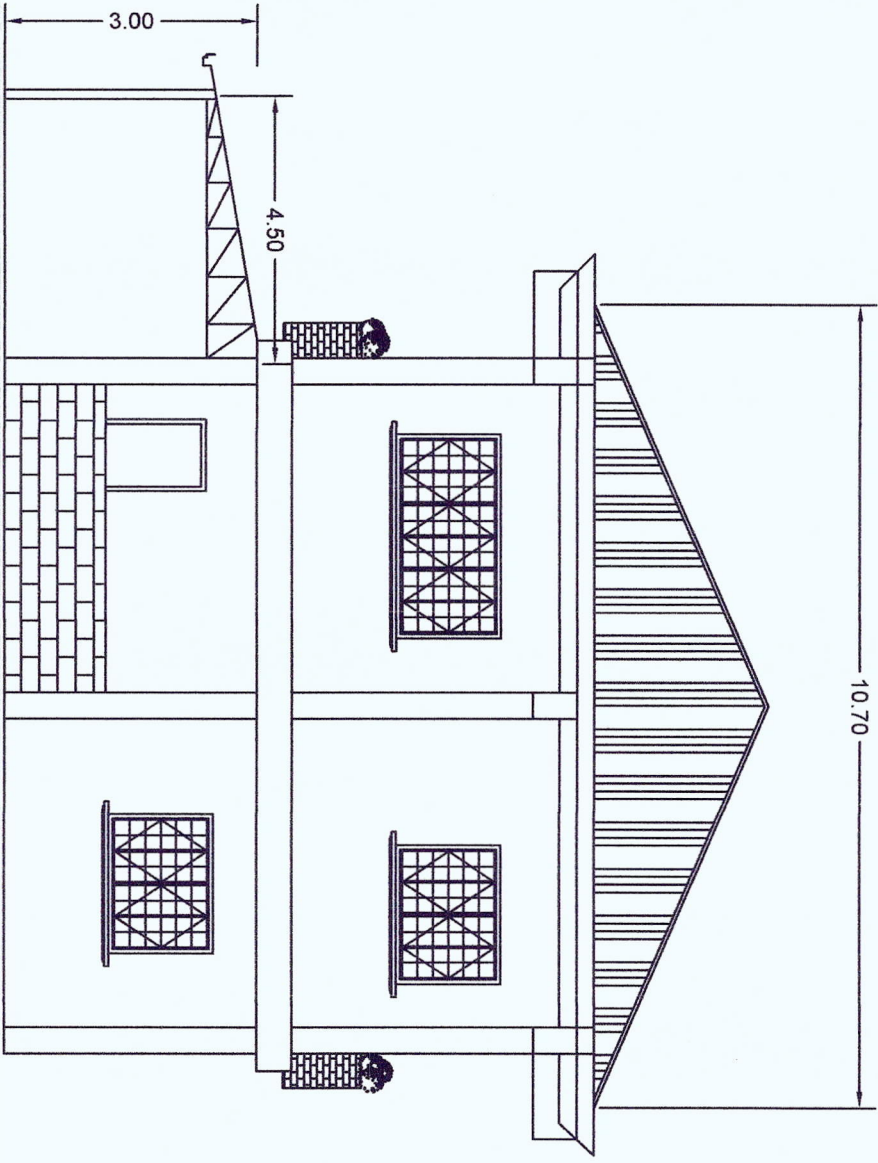
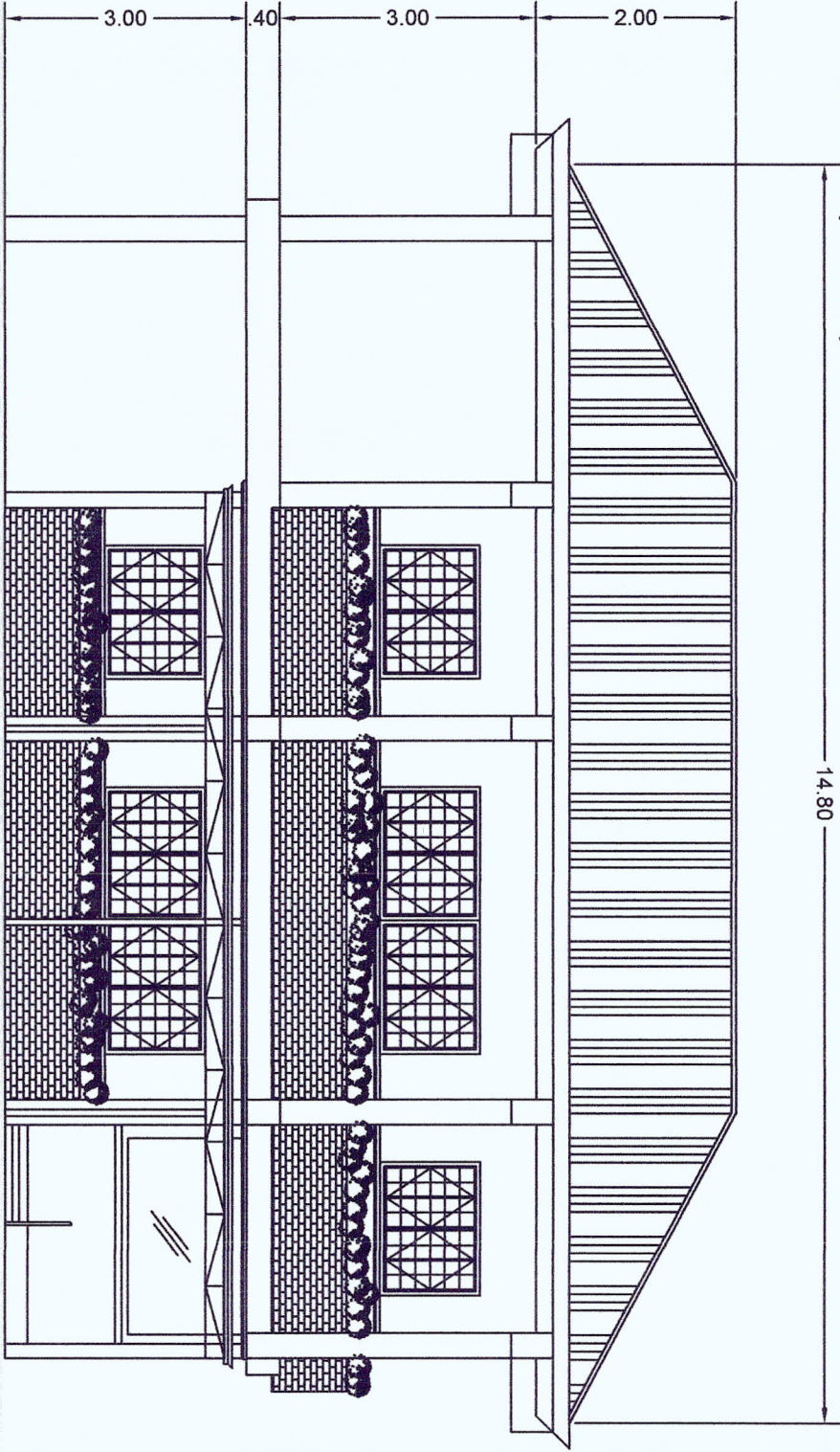


NOTE:

OUTSIDE WALLS, FENCE OF MCU
BUILDING MUST BE REPAINTED BY FLAT
LATEX PRIMER (1 COAT) AND
GLOSS-LATEX PAINT (1 COAT)

GATE MUST BE REPAINTED

2ND FLOOR CEILING MUST BE REPAINTED
BY FLAT ENAMEL (1 COAT) AND GLOSS
ENAMEL (1 COAT)



FRONT ELEVATION

RIGHT SIDE ELEVATION

PROJECT TITLE:

REPAINTING/REPLACEMENT OF DAMAGED CEILING AND PROVISION OF ELECTRICAL POLE AT MCU BUILDING,
MARIVELES AND PROVISION OF KITCHEN AT CARPENTRY SHOP AT PORT OF LAMAO, LIMAY, BATAAN

DATE:

AUGUST 2019

PREPARED BY:

ROY R. TAMAGON
ENGINEERING ASSISTANT, PMO-BATAAN/AURORA

CHECKED BY:

EDGARDO B. ANDAYA JR.
SUPERVISING ENGINEER-A, PMO-BATAAN/AURORA

RECOMMENDING APPROVAL:

REMEDIOS M. FRAC
ESD MANAGER, PMO-BATAAN/AURORA

APPROVED BY:

OVEN S. SENRAN
ACTING PORT MANAGER, PMO-BATAAN/AURORA

SHEET CONTENT:

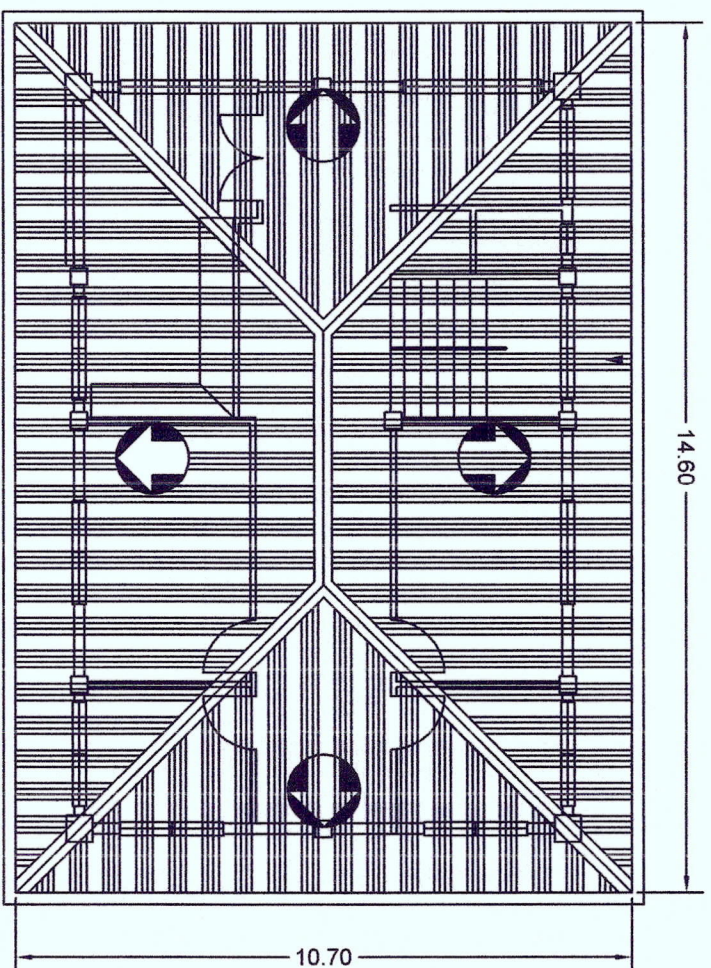
AS SHOWN

SHEET No.:

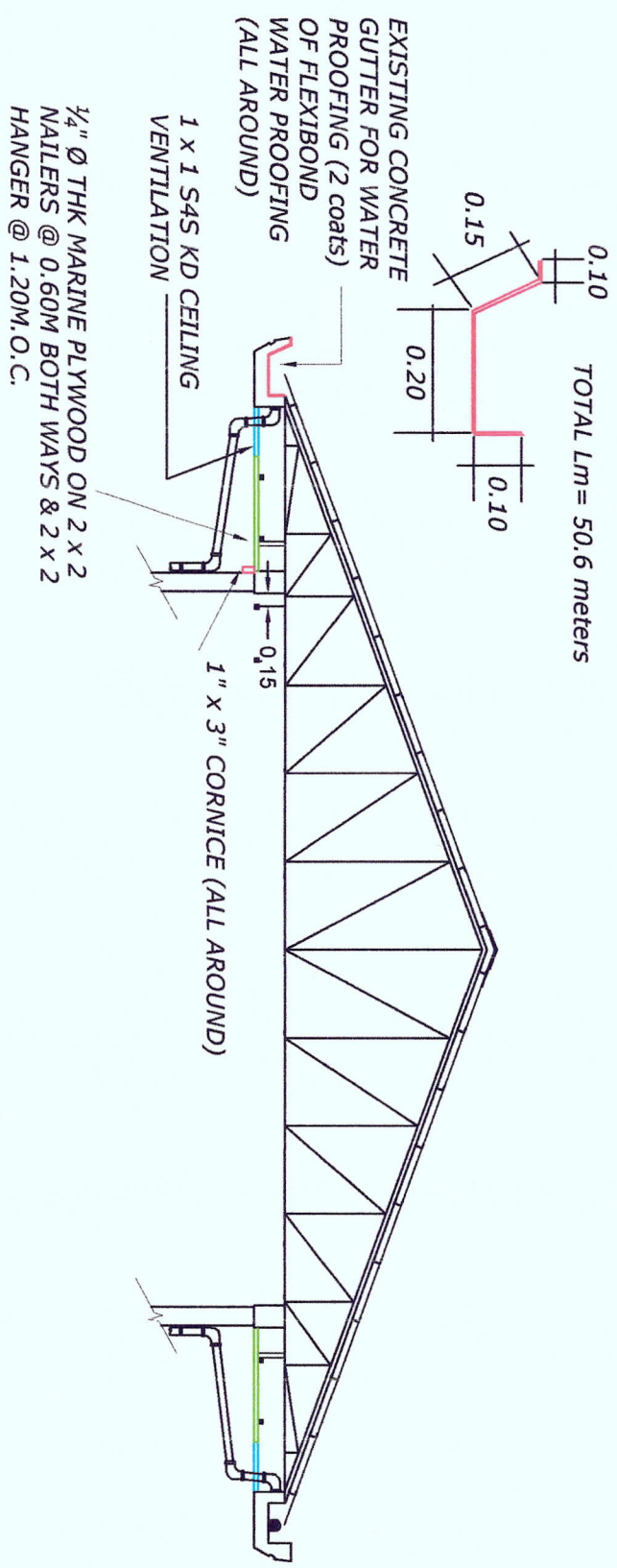
2 OF 6



PMO-BATAAN/AURORA
LAMAO, LIMAY, BATAAN

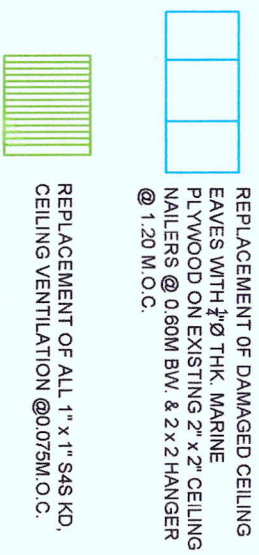


ROOF PLAN

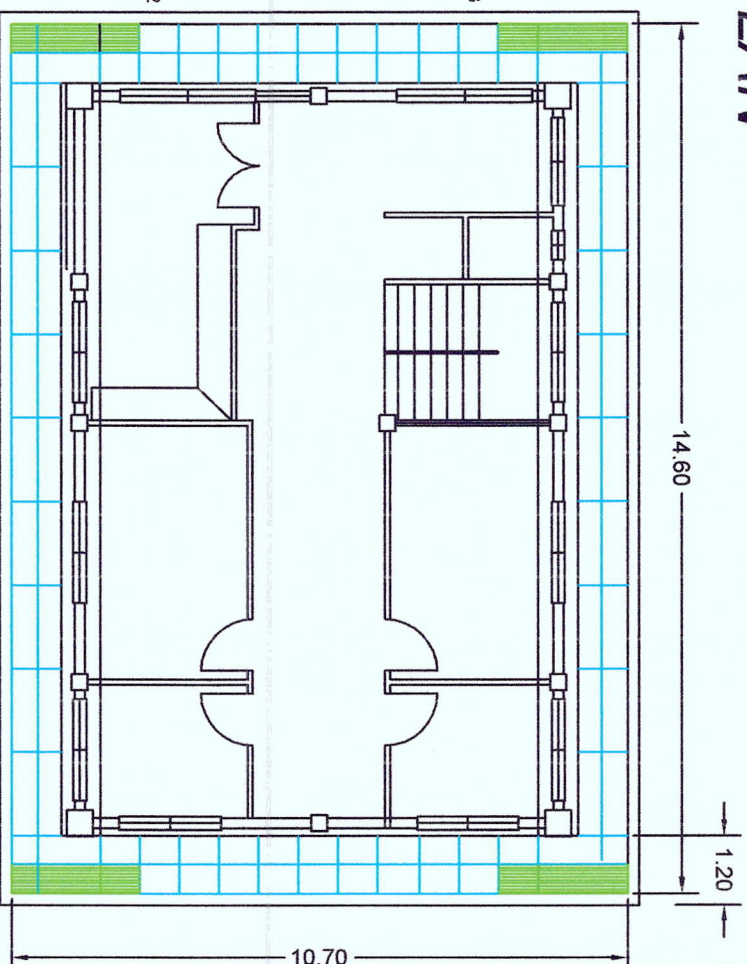


TRUSS & CEILING DETAILS

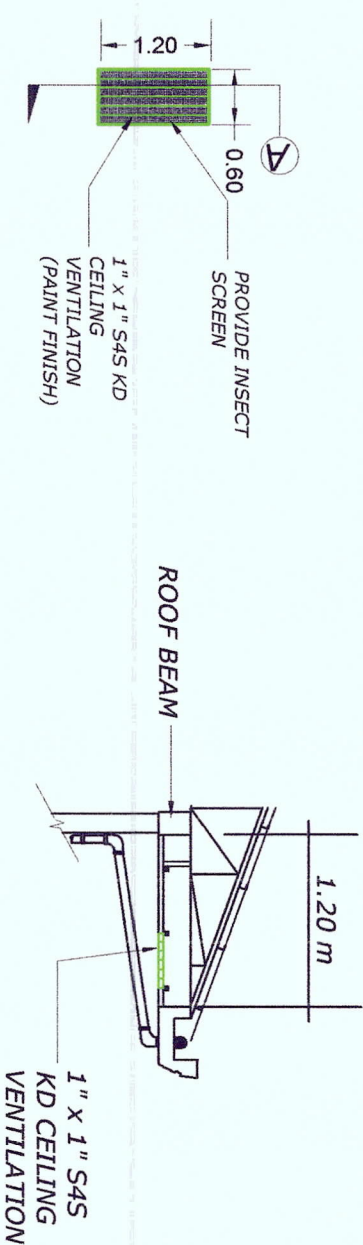
LEGEND:



Area (outside ceiling) = 80.72 m²



DETAIL PLAN (VENT.)



SECTION "A" DETAIL (VENT)

2ND FLOOR REFLECTED CEILING PLAN

PROJECT TITLE:

REPAINTING/REPLACEMENT OF DAMAGED CEILING AND PROVISION OF ELECTRICAL POLE AT MCU BUILDING, MARIVELES AND PROVISION OF KITCHEN AT CARPENTRY SHOP AT PORT OF LAMAO, LIMAY, BATAAN

DATE:

AUGUST 2019

PREPARED BY:

ROY R. TANAGON

CHECKED BY:

EDGARDO B. ANDAYA JR.

RECOMMENDING APPROVAL:

REMEDIOS M. FRAC

APPROVED BY:

LOVEN S. SERRAN

SHEET CONTENT:

AS SHOWN

SHEET N^o:

3 OF 6



PMO-BATAAN/AURORA
LAMAO, LIMAY, BATAAN

ENGINEERING ASSISTANT A, PMO-BATAAN/AURORA

SUPERVISING ENGINEER A, PMO-BATAAN/AURORA

ESD MANAGER, PMO-BATAAN/AURORA

ACTING PORT MANAGER, PMO-BATAAN/AURORA

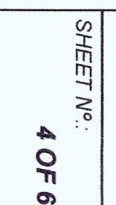
— 16.40

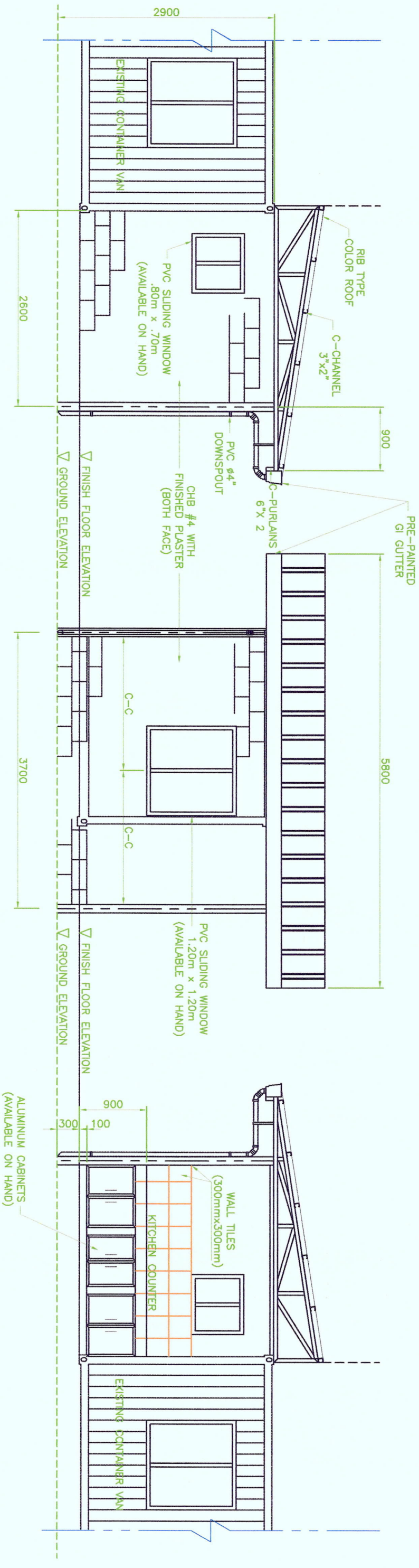


This architectural floor plan shows a building with a hatched exterior wall. A red square is located on the left wall. The plan includes a staircase on the left, a central hall, and a room on the right. Dimensions are provided for various parts of the building, including a total width of 16.90 and a total height of 8.06. The plan also shows a small circular feature in the top left corner and a small rectangular feature in the top right corner.

REPAINTING/REPLACEMENT OF DAMAGED CEILING AND PROVISION OF ELECTRICAL POLE AT MCU BUILDING,

AUGUST 2019

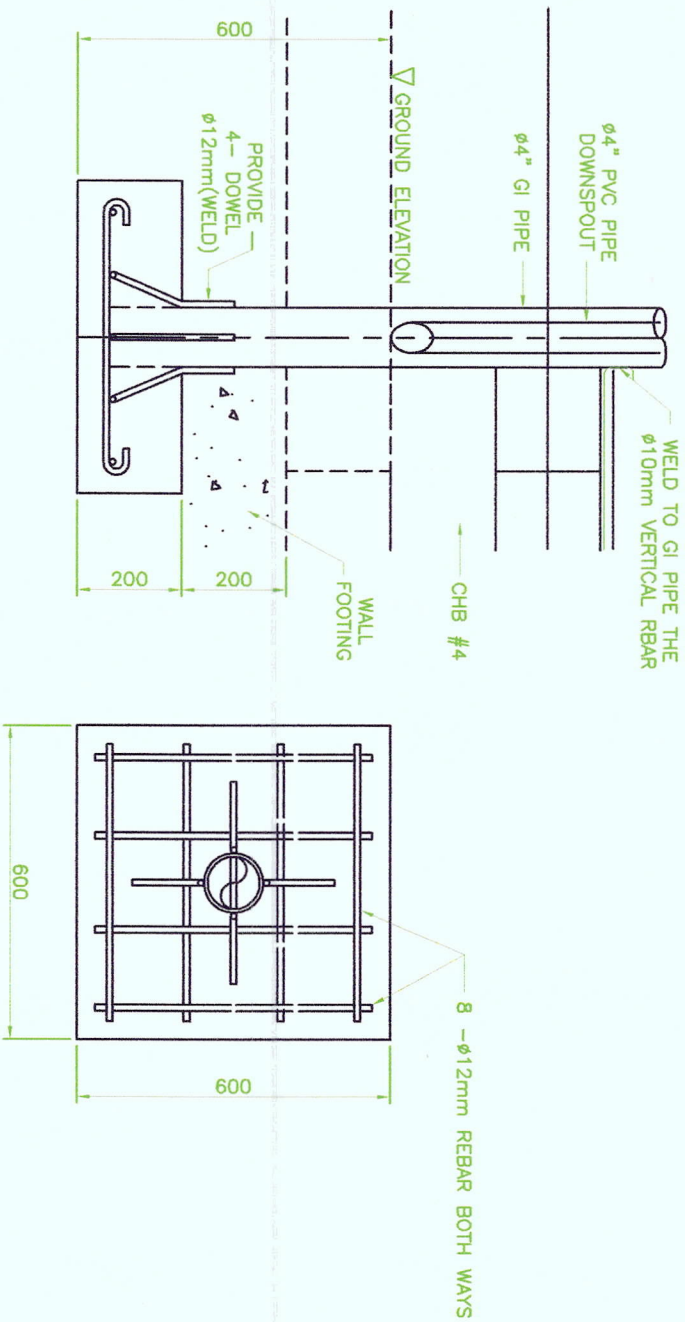




REAR SIDE VIEW

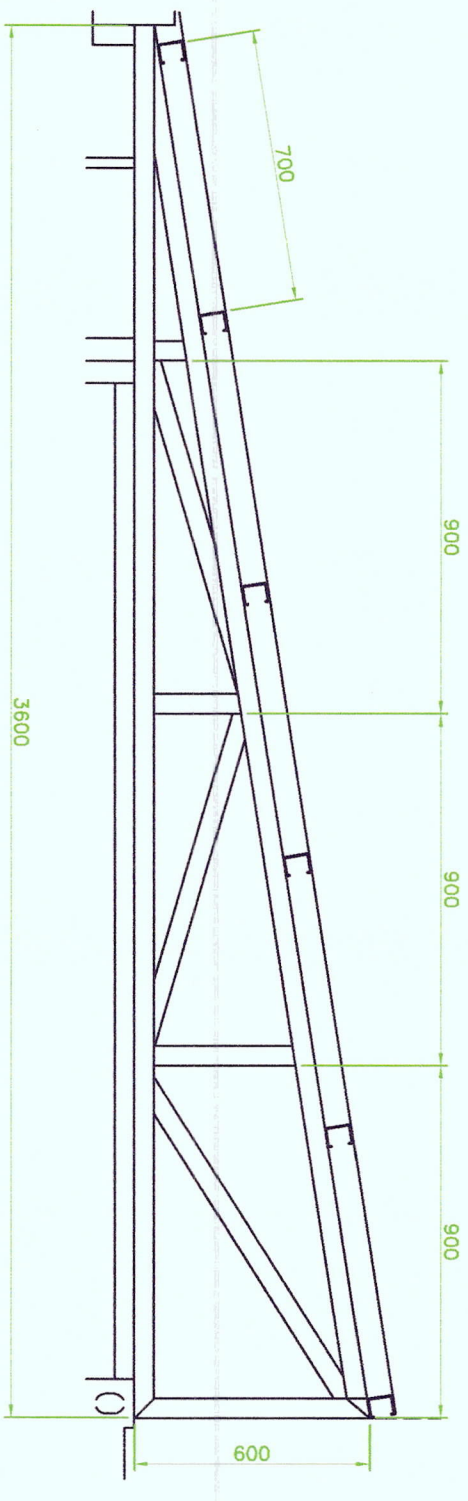
LEFT SIDE VIEW

RIGHT SIDE VIEW



FOOTING AND REINFORCING BAR DETAILS

TRUSS DETAILS (Material: 50mm x 50mm Angle Bar, 3 Sets)



PROJECT TITLE: REPAINTING/REPLACEMENT OF DAMAGED CEILING AND PROVISION OF ELECTRICAL POLE AT MCU BUILDING, MARIVELES AND PROVISION OF KITCHEN AT CARPENTRY SHOP AT PORT OF LAMAO, LIMAY, BATAAN



PNO-BATAAN/LAURORA
LAMAO, LIMAY, BATAAN

PREPARED BY:
ROY R. TANAGON
ENGINEERING ASSISTANT A, PNO-BATAAN/LAURORA

CHECKED BY:
EDGARDO B. ANDAYA JR.
SUPERVISING ENGINEER A, PNO-BATAAN/LAURORA

RECOMMENDING APPROVAL:
REMEDIOS M. FRAC
ESD MANAGER, PNO-BATAAN/LAURORA

APPROVED BY:
LOVEN S. SERRAN
ACTING PORT MANAGER, PNO-BATAAN/LAURORA

SHEET CONTENT:

AS SHOWN

DATE:

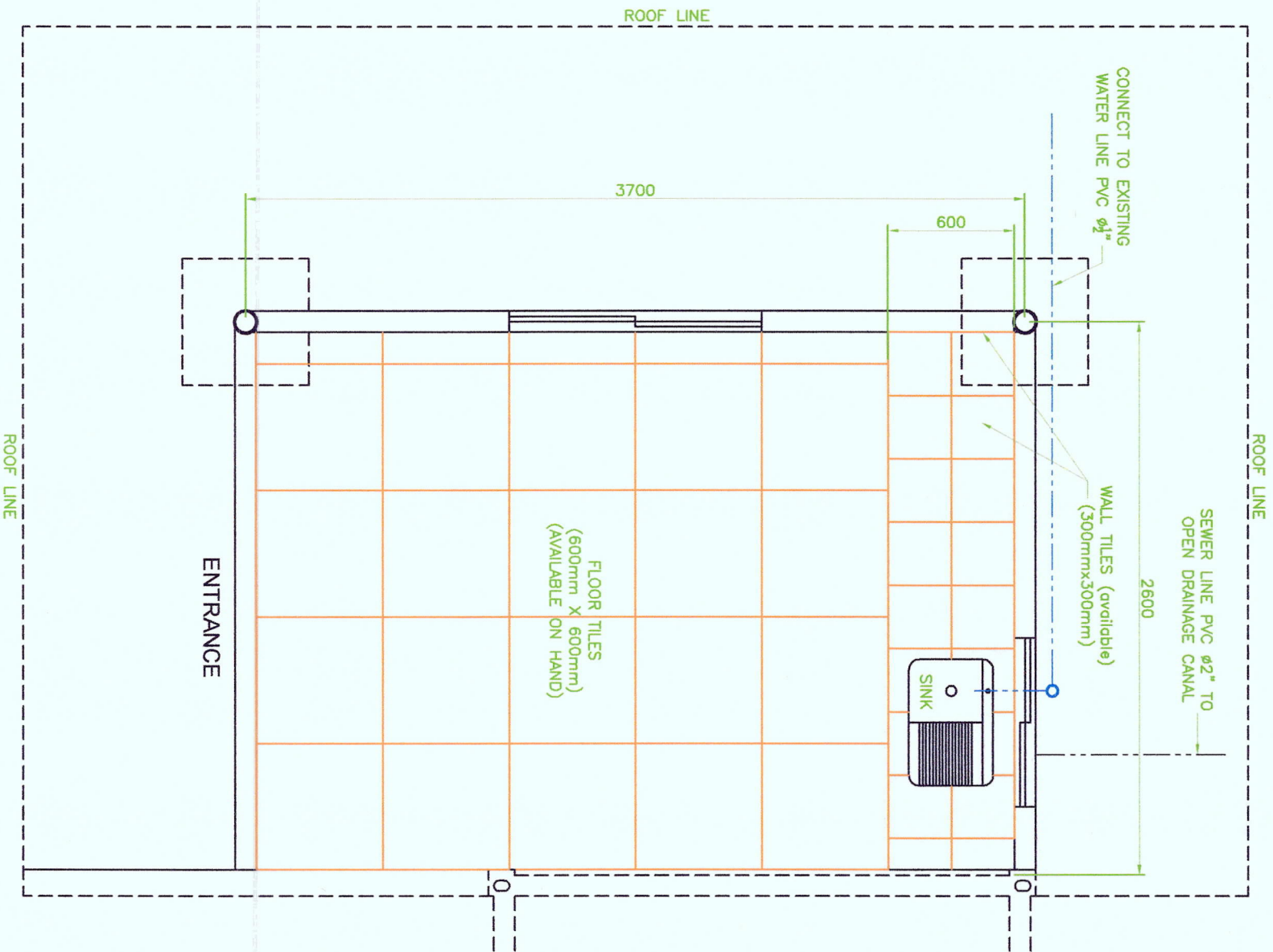
AUGUST, 2019

DIMENSION:

MM

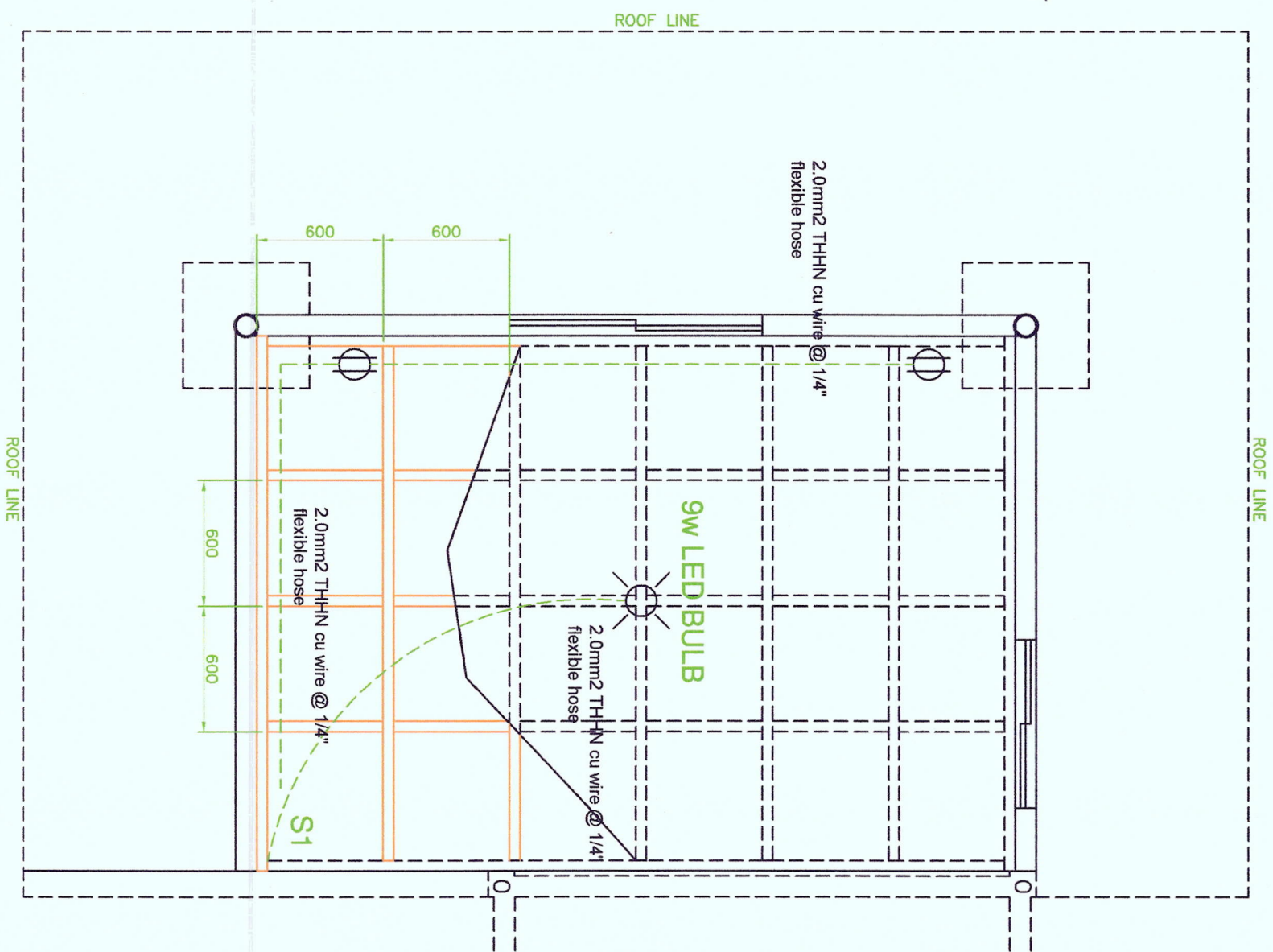
SHEET NO.

5 OF 6



FLOOR TILES, WATER LINE and SEWER LINE DETAILS

- LEGEND:
- 9W LED BULB
 - CONVENIENT OUTLET
 - S1 SINGLE GANG OUTLET



CEILING JOIST and ELECTRICAL LINE DETAILS

		PROJECT TITLE: REPAINTING/REPLACEMENT OF DAMAGED CEILING AND PROVISION OF ELECTRICAL POLE AT MCU BUILDING, MARIVELES AND PROVISION OF KITCHEN AT CARPENTRY SHOP AT PORT OF LAMAO, LIMAY, BATAAN		DATE: AUGUST, 2019	
PREPARED BY: ROY R. JAMIGON ENGINEERING ASSISTANT, PMO-BATAAN/AURORA	CHECKED BY: EDGARDO B. ANDAYA JR. SUPERVISING ENGINEER A, PMO-BATAAN/AURORA	RECOMMENDING APPROVAL: REMEDIOS M. FRAC ESO MANAGER, PMO-BATAAN/AURORA	APPROVED BY: LOVEN S. SERRAN ACTING PORT MANAGER, PMO-BATAAN/AURORA	SHEET CONTENT: AS SHOWN	
				DIMENSION: MM	SHEET NO. 6 OF 6