

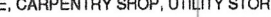




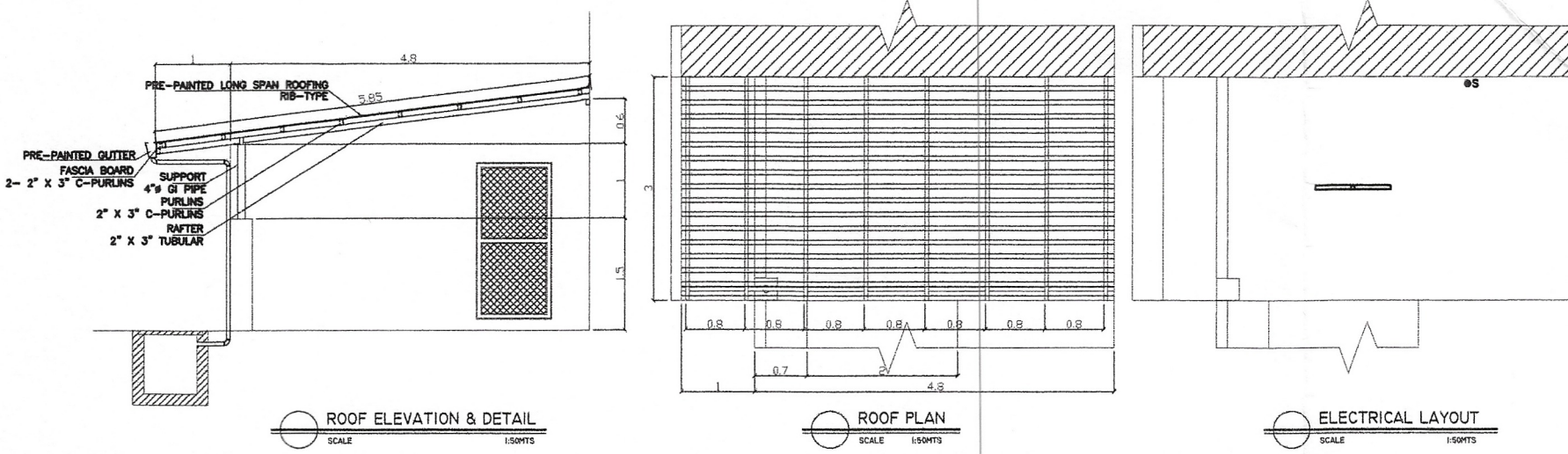
- A. GSU STORAGE ROOM
 B. CARPENTRY SHOP
 C. GUARD COUNTER IN FRONT OF TERMINAL OFFICE
 D. UTILITY STORAGE ROOM AT GROUND FLOOR OF POB
 E. DRAINAGE CANAL IN FRONT OF TERMINAL OFFICE

LOCATION PLAN

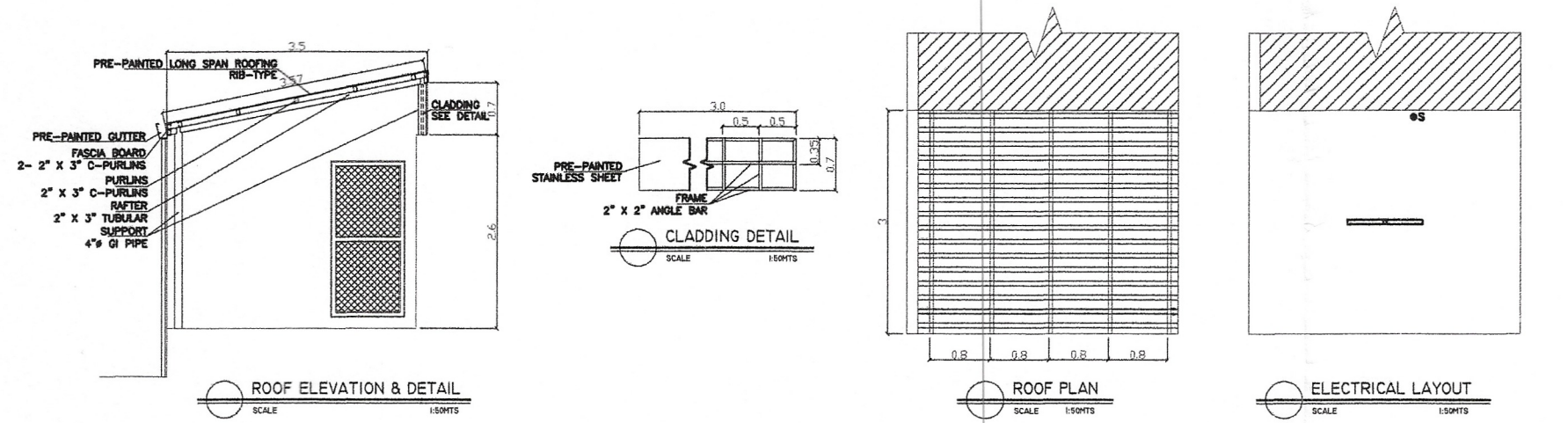
SCALE NTS

<div><div>PHILIPPINE PORTS AUTHORITY</div><div></div></div>	<div><div>PORT OF LAMAO</div><div>LAMAO, LIMAY, BATAAN</div></div>	PROJECT TITLE: MAINTENANCE OF ROOFING OF GSU STORAGE, CARPENTRY SHOP, UTILITY STORAGE ROOM AT POB, GUARD COUNTER, DRAINAGE CANAL IN FRONT OF TOO AND REPAINTING OF PERIMETER FENCE, CONCRETE CURB AND CURTAIN WALL AT PORT OF LAMAO, LIMAY, BATAAN					DATE: 2023
		PREPARED BY: <div><div></div><div>LALKINE M. GOMEZ</div><div>ENGINEER B, PMO-BATAAN/AURORA</div></div>	CHECKED BY: <div><div></div><div>MIGUEL PAULO D. MEDALLA</div><div>SUPERVISING ENGINEER A, PMO-BATAAN/AURORA</div></div>	RECOMMENDING APPROVAL: <div><div></div><div>ALBERT FRANCIS T. GOLES</div><div>ACTING ESD MANAGER, PMO-BATAAN/AURORA</div></div>	APPROVED BY: <div><div></div><div>JON GABRIELL M. MANANSALA</div><div>ACTING PORT MANAGER, PMO-BATAAN/AURORA</div></div>	SHEET CONTENT: <div><div>- LOCATION PLAN</div><div>- VICINITY MAP</div></div>	1
							SHEET NO: 1 / 2

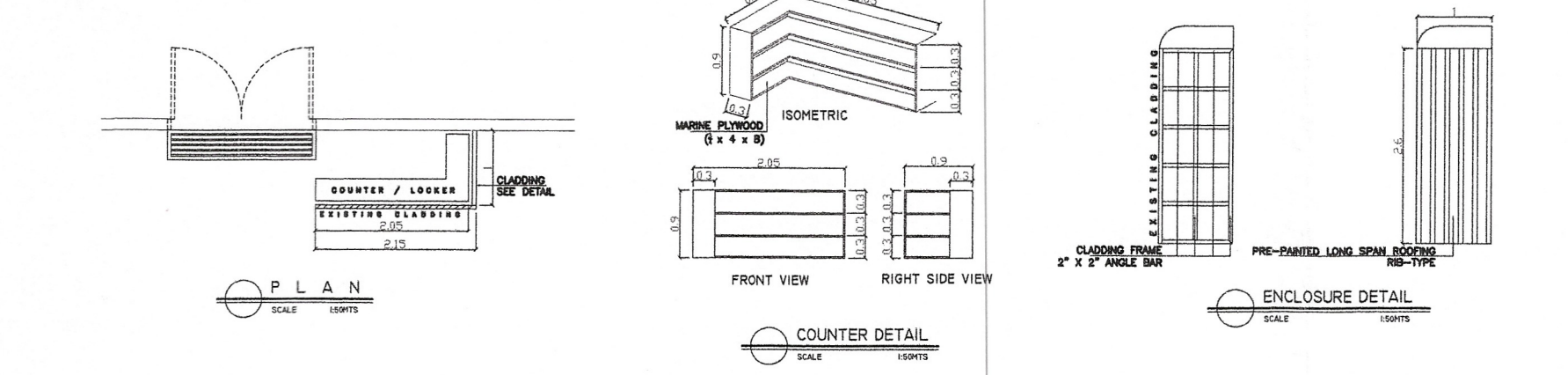
A. ROOFING AT GSU STORAGE



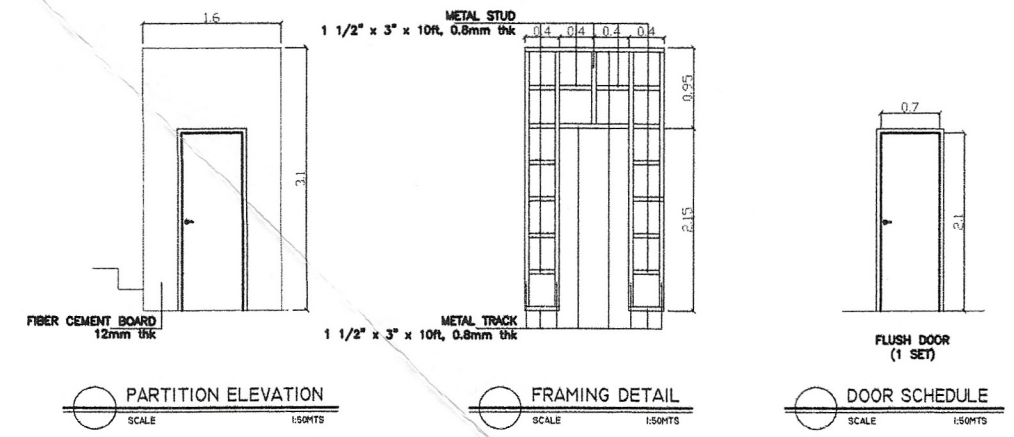
B. ROOFING AT CARPENTRY SHOP



C. GUARD COUNTER
FRONT OF TERMINAL OFFICE



D. UTILITY STORAGE ROOM
GROUND FLOOR OF POB



E. DRAINAGE CANAL
FRONT OF TERMINAL OFFICE

