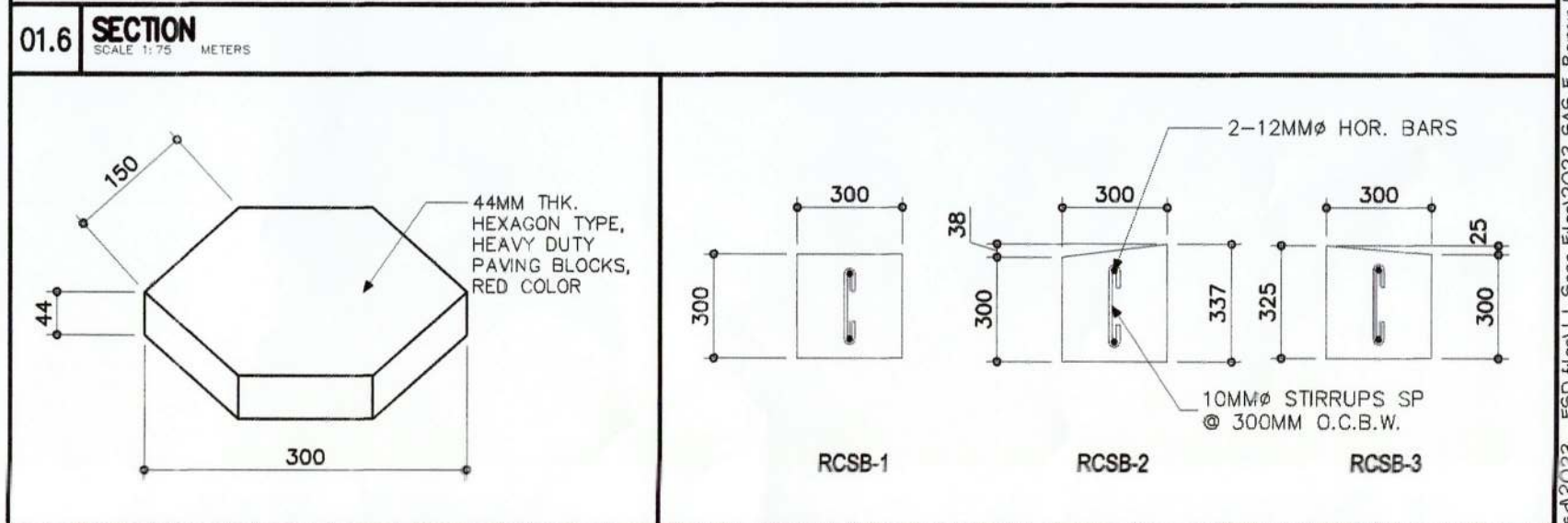
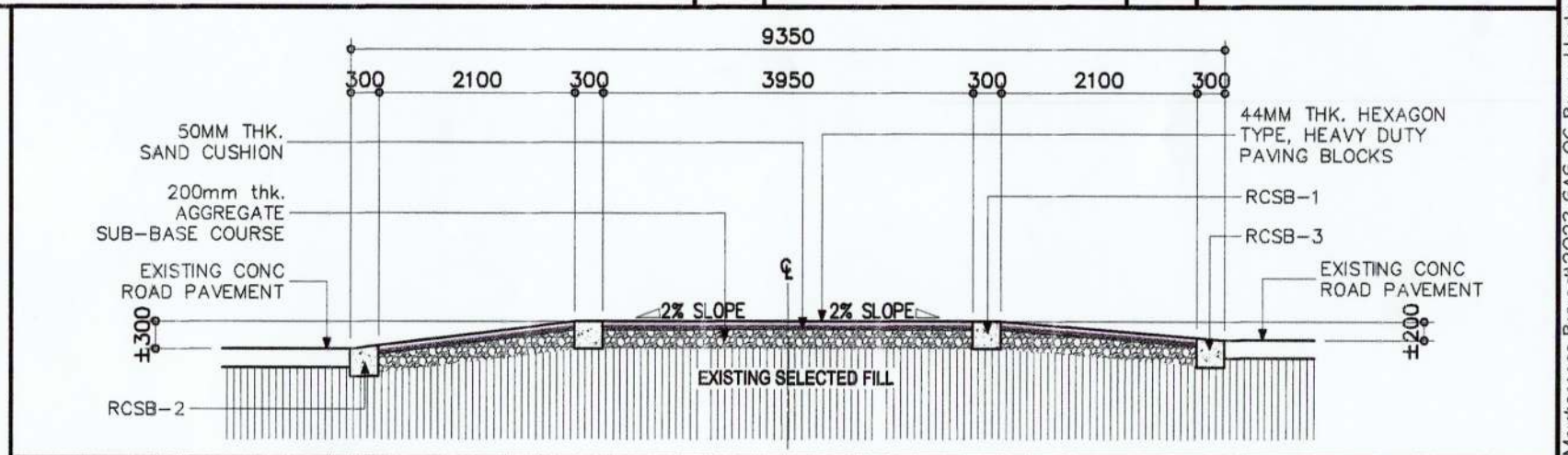
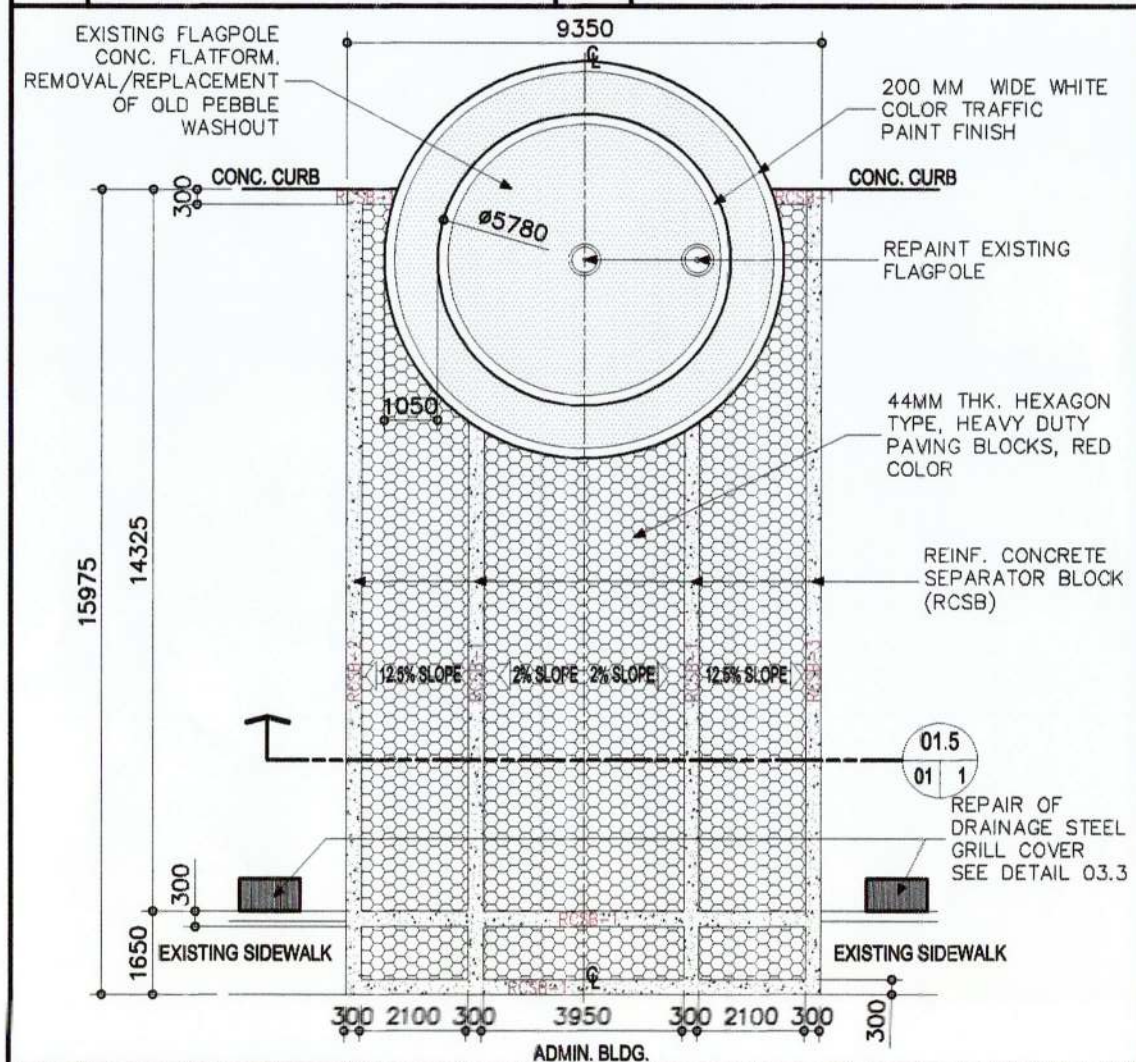


01.1	PORT LOCATION MAP SCALE 1:100 METERS	01.2	LOCATION PLAN SCALE 1:7500 METERS	01.3	SHEET CONTENTS SCALE 1:100 METERS	01.4	LEGEND SCALE 1:100 METERS
------	---	------	--------------------------------------	------	--------------------------------------	------	------------------------------

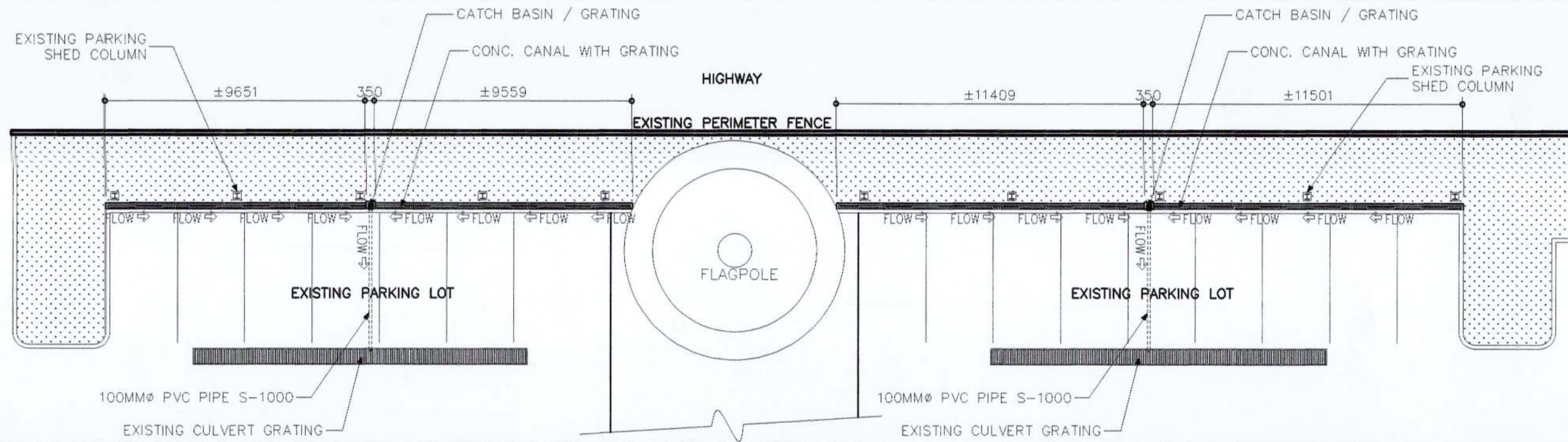


01.5	PAVEMENT PLAN SCALE 1:150 METERS	01.7	OCTAGON SHAPE CONCRETE PAVING BLOCK DETAIL SCALE 1:8 METERS	01.8	RC SEPARATOR BLOCKS SECTION DETAILS (RCSB) SCALE 1:20 METERS
------	-------------------------------------	------	--	------	---

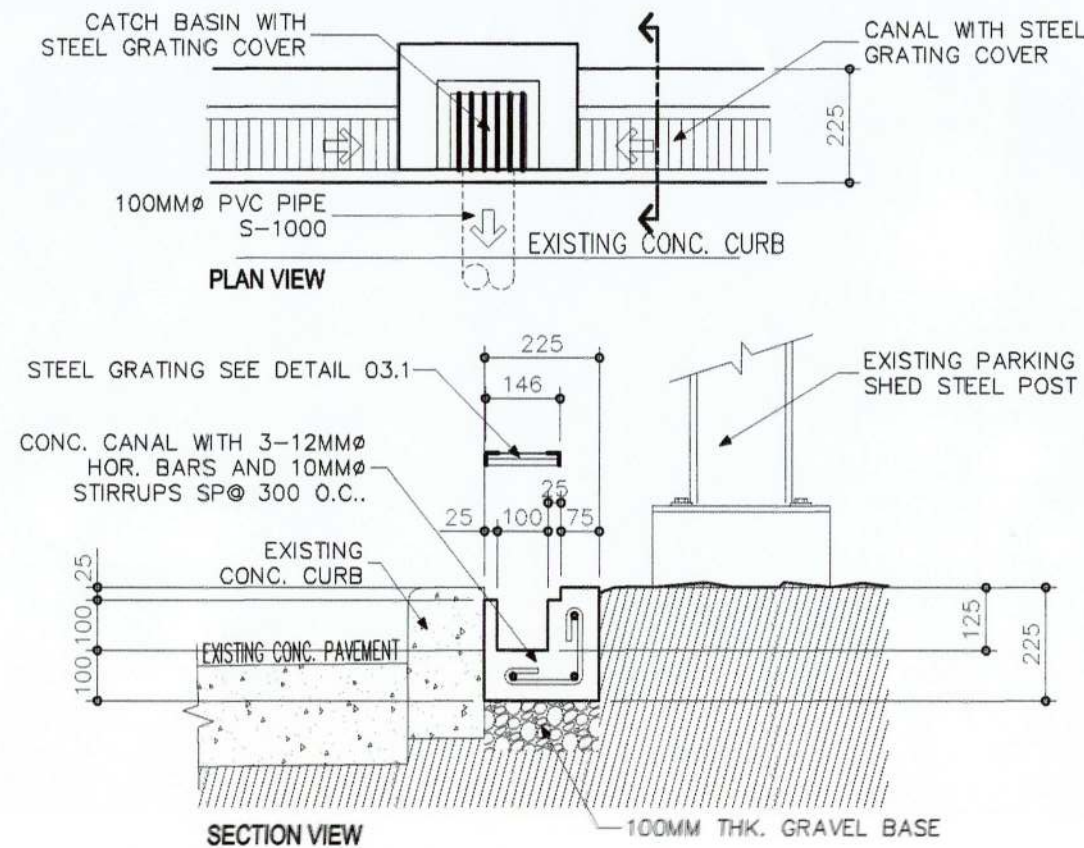
	PREPARED BY: VICTOR A. JASPE ENGINEERING ASSISTANT-A	CHECKED AND REVIEWED BY: EDELPETER L. DE LA ROSA SUPERVISING ENGINEER-A	RECOMMENDING APPROVAL BY: LARA SIMONE L. ABA ACTING ESD MANAGER	APPROVED BY: ANALEE G. AGUILA PORT MANAGER	OWNER: ANALEE G. AGUILA PORT MANAGER	PROJECT TITLE: REPAIR AND MAINTENANCE OF EXISTING CONCRETE WALKWAY AND LINE DRAINAGE AT PARKING SHED IN FRONT OF ADMIN. BLDG., SASA PORT	REVISIONS DATE REMARKS ADDENDUM NO. PROJECT DATE DRAWN CHECKED	SHEET NO. 01 OF 3
--	--	---	---	--	--	--	--	----------------------------

DRAWING AND SPECIFICATION DULY SIGNED, STAMPED OR SEALED AS INSTRUMENTS OF SERVICE ARE THE PROPERTY OF THE ARCHITECT, WHETHER THE OBJECTS FOR WHICH THEY ARE MADE IS EXECUTED OR NOT. IT SHALL BE UNLAWFUL FOR ANY PERSON WITHOUT THE WRITTEN CONSENT OF THE ARCHITECT OF THE SAID DOCUMENTS TO DUPLICATE OR TO MAKE COPIES OF THE SAID DOCUMENTS FOR USE IN REPLICATION OF AND FOR PROJECTS OR BUILDINGS WHETHER PARTLY OR WHOLLY EXECUTED. R.A. 545 SECTION 25(4).

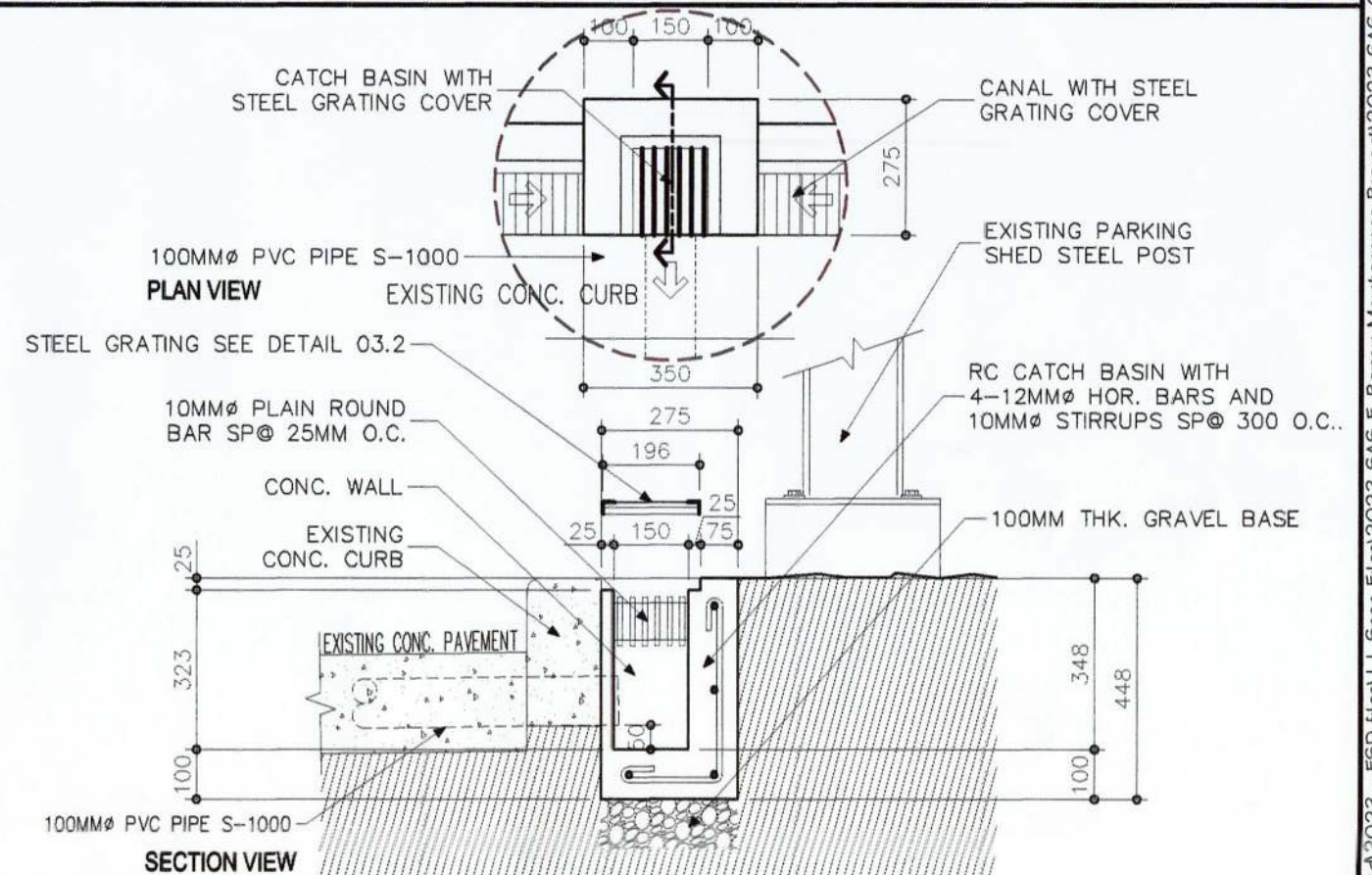
CAD FILE: W:\server\esd\2023 - ESD files\1-Sasa Files\2023-SAS-E_Repair Maintenance Project\2023-SAS-OG-Paving blocks Admin Bldg.dwg
 LAST PLOTTED: 10/24/2023 5:17:09 PM
 PLOT STYLE: OO-PMODavao_pt_20x30 + A3.ctb



02.1 DRAINAGE LAYOUT AT PARKING SHED
SCALE 1:175 METERS



02.2 TYPICAL GRATED CANAL SECTION DETAIL
SCALE 1:15 METERS



02.3 TYPICAL GRATED CATCH BASIN SECTION DETAIL
SCALE 1:15 METERS



PREPARED BY:
VICTOR A. JASPE
ENGINEERING ASSISTANT-A

CHECKED AND REVIEWED BY:
EDELPETER L. DE LA ROSA
SUPERVISING ENGINEER A

RECOMMENDING APPROVAL BY:
LARA SIMONE L. ABA
ACTING ESD MANAGER

APPROVED BY:
ANALEE G. AGUILA
PORT MANAGER

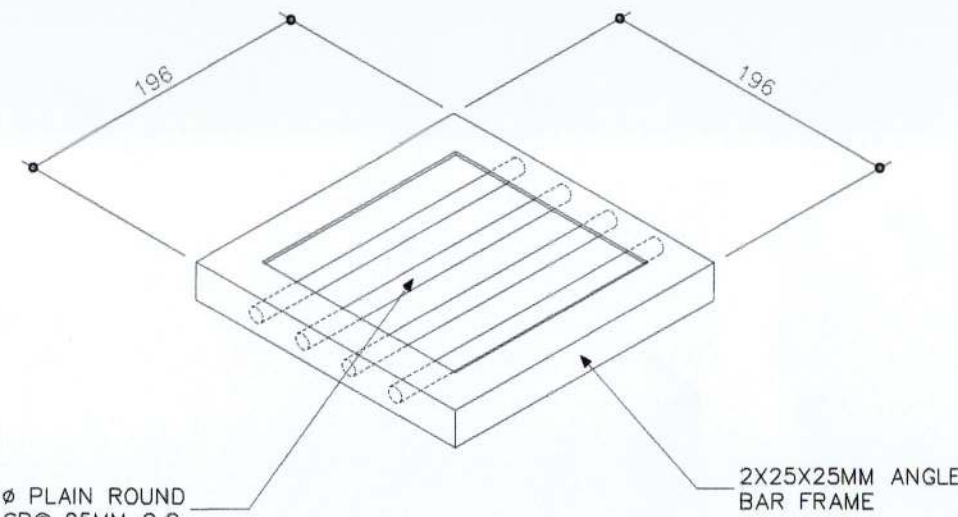
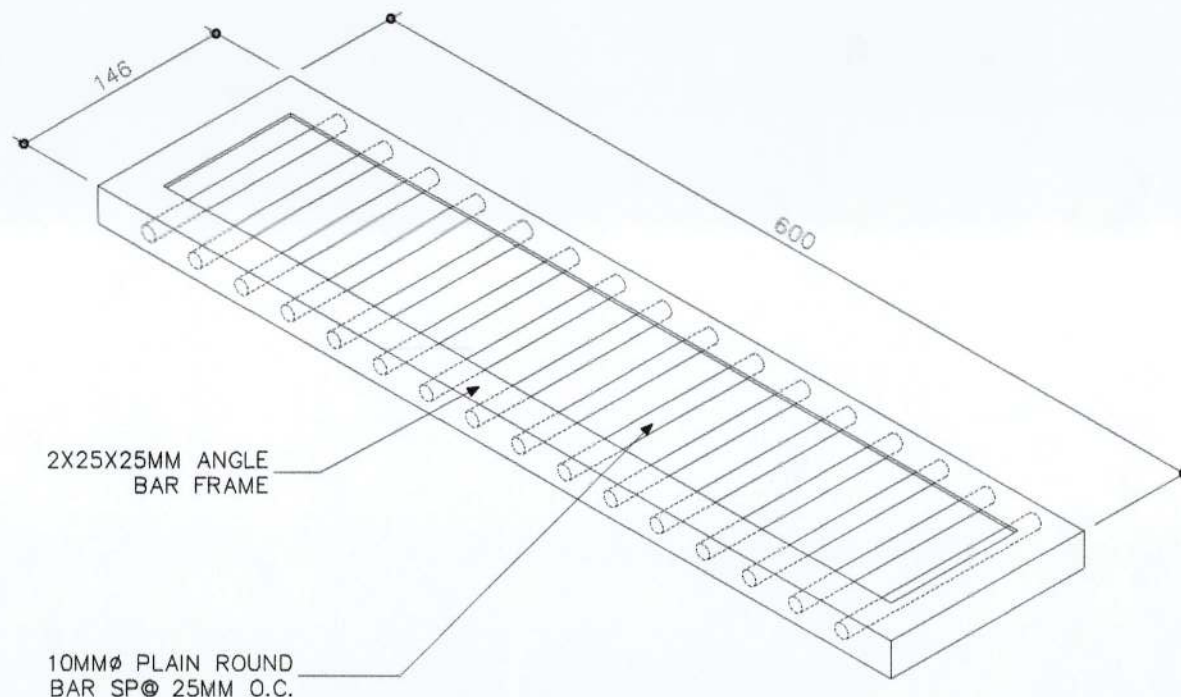
OWNER:
ANALEE G. AGUILA
PORT MANAGER

SHEET CONTENTS:
DRAINAGE LAYOUT AT PARKING SHED,
GRADED CANAL SECTION DETAIL, AND
GRADED CATCH BASIN SECTION DETAIL

PROJECT TITLE:
**REPAIR AND MAINTENANCE OF EXISTING
CONCRETE WALKWAY AND LINE
DRAINAGE AT PARKING SHED INFRONT
OF ADMIN. BLDG., SASA PORT**

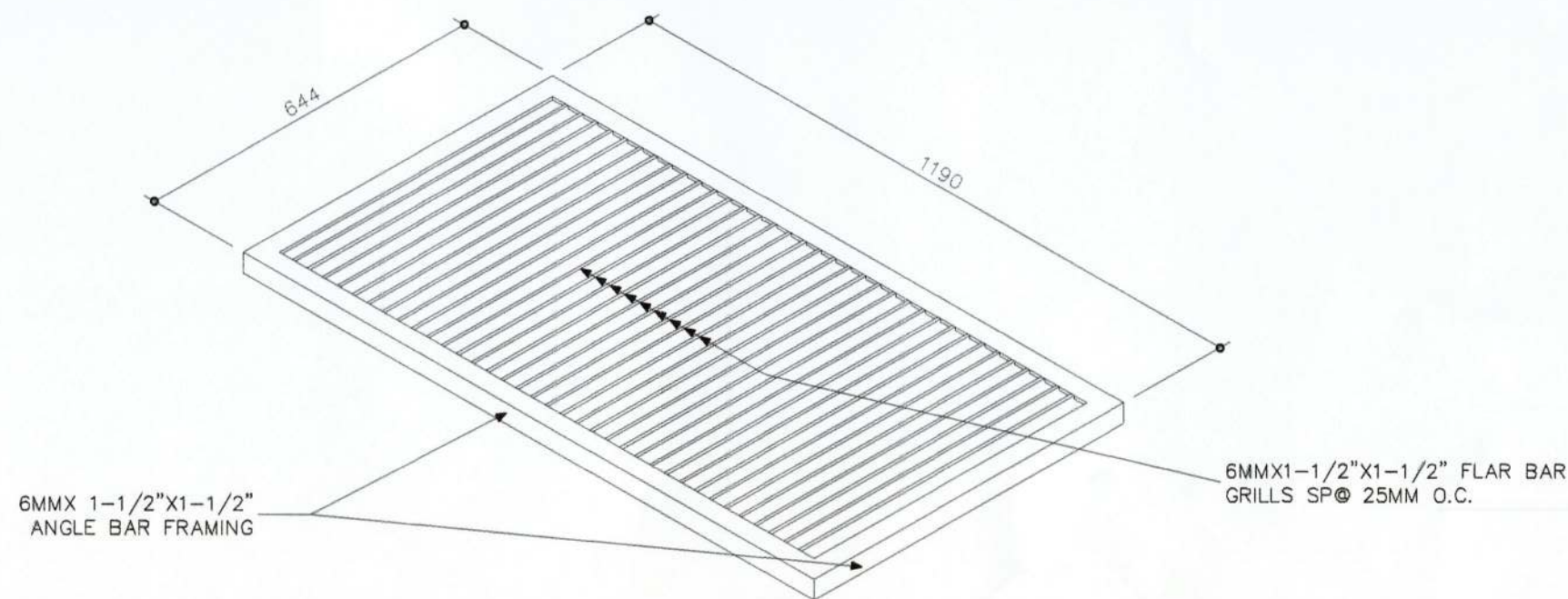
LOCATION:
KM. 10, PORT AREA, SASA, DAVAO CITY

REVISIONS		SHEET NO.	OF
DATE	REMARKS		
		02	3
ADDENDUM			
NO.	-		
PROJECT	-	CADD BY: VAJ	
DATE	-	DATE DRAWN: 5/11/2022	


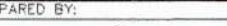
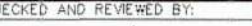




03.1 TYPICAL CANAL COVER DETAIL (PANEL)

03.2 TYPICAL CATCH BASIN COVER DETAIL



03.3 TYPICAL STEEL GRILL COVER DETAIL (PANEL) 2-UNITS

<div></div> <div>PHILIPPINE PORTS AUTHORITY PMO DAVAO</div>	PREPARED BY:	CHECKED AND REVIEWED BY:	RECOMMENDING APPROVAL BY:	APPROVED BY:	OWNER:	PROJECT TITLE:	REVISIONS		SHEET NO.	OF
	 VICTOR A. JASPE ENGINEERING ASSISTANT-A	 EDELPIETER L. DE LA ROSA SUPERVISING ENGINEER A	 LARA SIMONE L. ABA ACTING ESD MANAGER	 ANALEE G. AGUILA PORT MANAGER	ANALEE G. AGUILA PORT MANAGER	REPAIR AND MAINTENANCE OF EXISTING CONCRETE WALKWAY AND LINE DRAINAGE AT PARKING SHED INFRONT OF ADMIN. BLDG., SASA PORT	DATE	REMARKS	03	3
	SHEET CONTENTS:					ADDENDUM				
	TYPICAL CANAL COVER DETAIL (PANEL), TYPICAL CATCH BASIN COVER DETAIL, AND TYPICAL STEEL GRILL COVER DETAIL (PANEL) 3-UNITS.					LOCATION:	NO.	PROJECT		
						KM. 10, PORT AREA, SASA, DAVAO CITY	DATE	DATE		
						DATE	DATE	CADD BY: VAJ		
								DATE DRAWN: 5/11/2022		
								DATE UPDATE: 10/23/2023		

DRAWING AND SPECIFICATION DULY SIGNED, STAMPED OR SEALED AS INSTRUMENTS OF SERVICES ARE THE PROPERTY OF THE ARCHITECT, WHETHER THE OBJECTS FOR WHICH THEY ARE MADE IS EXECUTED OR NOT. IT SHALL BE UNLAWFUL FOR ANY PERSON WITHOUT THE WRITTEN CONSENT OF THE ARCHITECT OF THE SAID DOCUMENTS TO DUPLICATE OR TO MAKE COPIES OF THE SAID DOCUMENTS FOR USE IN REPETITION OF AND FOR PROJECTS OR BUILDINGS WHETHER PARTLY OR WHOLLY EXECUTED. R.A.545 SECTION 25(4).

CAD FILE: I:\ESD-server\esd\2023 - ESD Files\1-Sasa Files\2023-SAS-E-Repair Maintenance Project\2023-SAS-OG-Paving blocks Admin Bldg.dwg
LAST PLOTTED: 10/24/2023 5:06:30 PM
PLOT STYLE: OO-PMODavao_PP_20x30 + A3_thm.ctb