



Name of Contract : REPAINTING/ DERUSTING OF FENCE AND MOVABLE GUARDHOUSE

Location of Projec : Port of Kolambugan, Lanao del Norte
Reference Numbe : CW 012- 2023

QUOTATION (BILL OF QUANTITIES)

Project Name : REPAINTING/ DERUSTING OF FENCE AND MOVABLE GUARDHOUSE
Project Location : Port of Kolambugan, Lanao del Norte

ITEM NO.	DESCRIPTION	UNIT	QUANTITY	UNIT PRICE (Pesos)	AMOUNT (Pesos)
1	DERUSTING/ SCRAPPING OF RUSTED G.I STEEL GATES AND CONCRETE CONCRETE WALL and REPAINTING.				
1.1	Derusting and scrapping of rust at the steel frame of of gates, steel grills and concrete walls including spraying of clean water. Installation of formworks and steel scaffoldings.	lot	1.00	P	P
(Pesos					
1.2	Repainting of concrete/ masonry wall, steel gates, and guard house surface 1-coat primer and -2 coat finnish and wooden surfaces.	sq.m.	2246.00	P	P
(Pesos					
2	REPAIR OF 1-UNITS PORTABLE GUARDHOUSE				
2.1	Supply , Deliver, Install and fabricate G.I. posts and steel frames, roof framing accessories, and install roof panels including pre-fabricated gutters, flashing and etc. as indicated in the plan.	sq.m.	1101.820	P	P
(Pesos					
2.2	Supply, deliver and install double-wall hardiflex panel board on metal track frames to include phenolic board floor and customized wooden shelves and cabinet as indicated in the plan.	lot	1.00	P	P
(Pesos					
2.3	Repair and Install Ceiling Panels and Install Door and Windows to include supply, deliver and install interior and exterior ceiling panel boards and and install solid panel door and various aluminum windows including each chair as indicated in the plan.	lot	1.00	P	P
(Pesos					
2.4	Repainting Works to include Supply and application of paints for steel surfaces including hardiflex wall and ceiling surfaces as indicated in the plan.	lot	1.00	P	P
(Pesos					
TOTAL					P

IN WORDS : _____

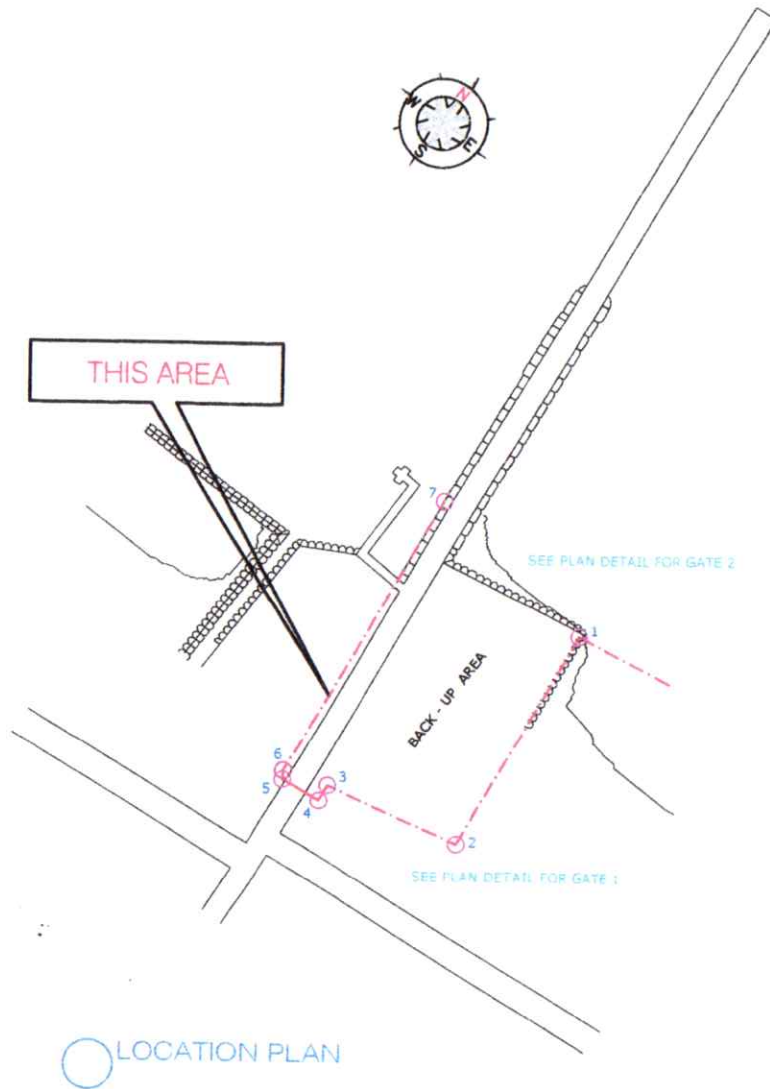
CALENDAR DAYS TO COMPLETE : 50 CD

NOTE : 1 For Labor, Material and Equipments
2 For details please refer to the Enginnering Services Division

SUBMITTED BY :

NAME OF THE REPRESENTATIVE OF THE BIDDER

NAME OF BIDDER



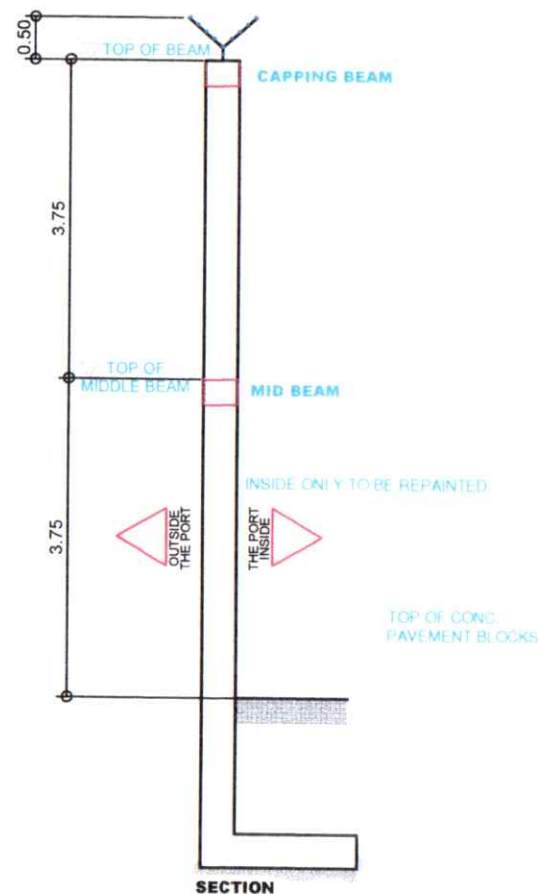
LEGEND:

LINE	DISTANCE	
1 - 2	90.00 m	
2 - 3	55.93 m	
3 - 4	6.84 m	
4 - 5	8.52 m	(ENTRANCE GATE)
5 - 6	3.55 m	
6 - 7	122.04 m	

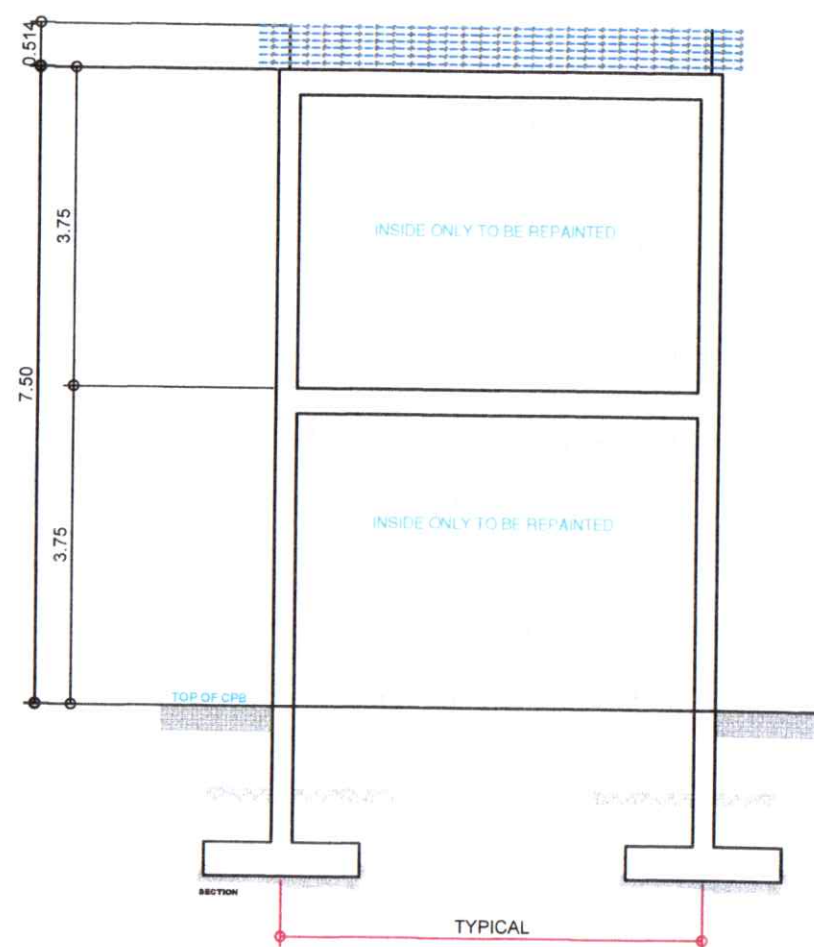


LOCATION PLAN

	REVISION	PROJECT TITLE:	DRAWN BY:	CHECKED BY:	RECOMMENDED BY:	APPROVED BY:	SHEET CONTENTS:
		REPAINTING/DERUSTING OF FENCE AND MOVABLE GUARDHOUSE					
		PORT OF: KOLAMBUGAN	DENNIS S. CAMBAYA Engineering Assistant A	COLIN KAY R. CAJOTE Supervising Engineer A	JOEL V. ESCALA Manager ESD	MEDARDO SOSOBRAO, JR. Port Manager	- LOCATION PLAN - VICINITY PLAN
		DATE INSPECTED: JUNE 29, 2023 DATE DRAWN: JULY 03, 2023 SHEET NUMBER: 1 of 7					



TYPICAL DETAIL COLUMN & FOOTING
SCALE 1:66MTS



TYP. ELEVATION OF CHB FENCE
SCALE 1:66MTS



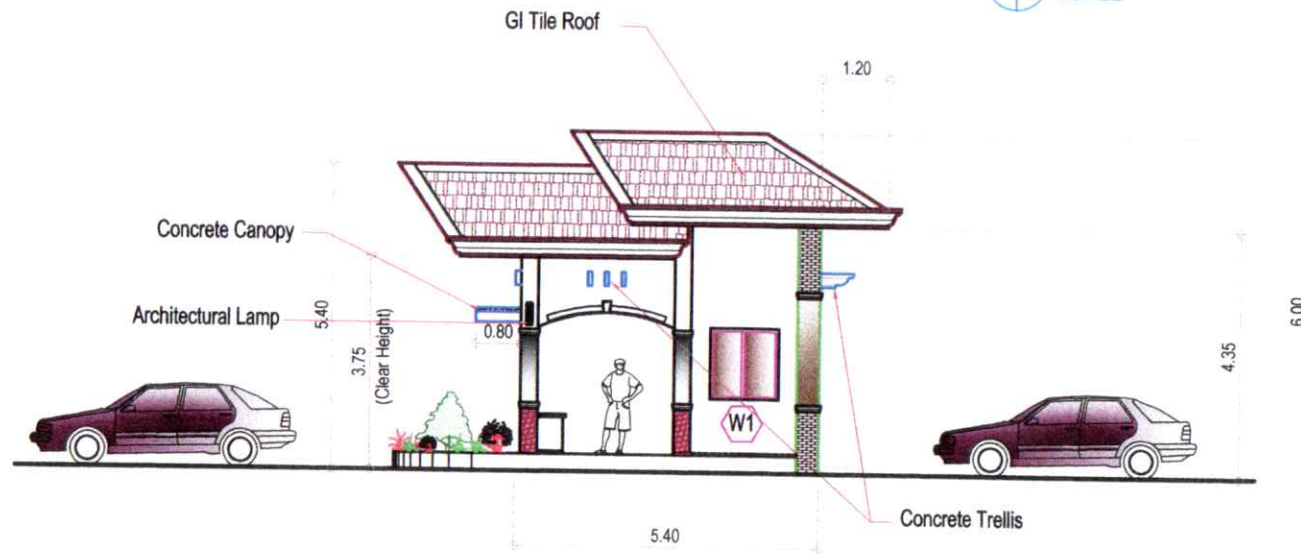
REVISION	PROJECT TITLE:	DRAWN BY:	CHECKED BY:	RECOMMENDED BY:	APPROVED BY:	SHEET CONTENTS:
	REPAINTING/DERUSTING OF FENCE AND MOVABLE GUARDHOUSE					
	PORT OF: KOLAMBUGAN					
	DATE INSPECTED: JUNE 29, 2023	DENNIS S. CAMBAYA Engineering Assistant A	COLIN KAY R. CAJOTE Supervising Engineer A	JOEL B. ESCALA Manager ESD	MEDARDO I. SOSOBRADO, JR. Harbor Port Manager	- TYPICAL DETAIL COLUMN AND FOOTING - TYPICAL ELEVATION OF CHB FENCE
	DATE DRAWN: JULY 03, 2023					
	SHEET NUMBER: 1 of 7					



INSIDE ELEVATION OF GATE
SCALE: NTS



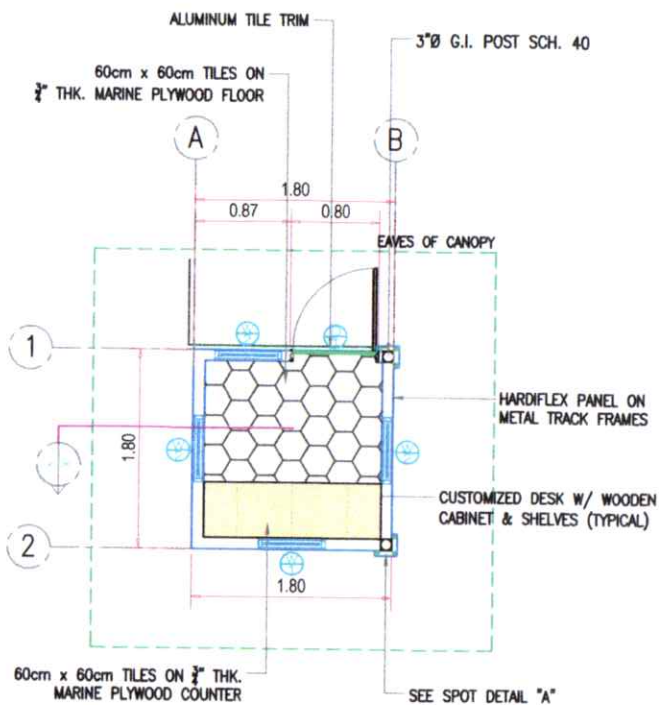
FRONT (OUTSIDE) ELEVATION OF GATE
SCALE: NTS



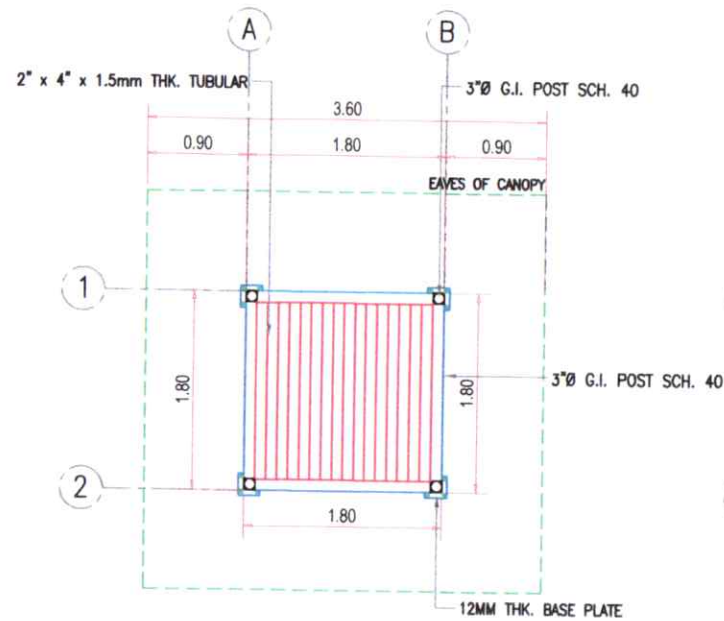
LEFT SIDE ELEVATION OF GATE
SCALE: NTS



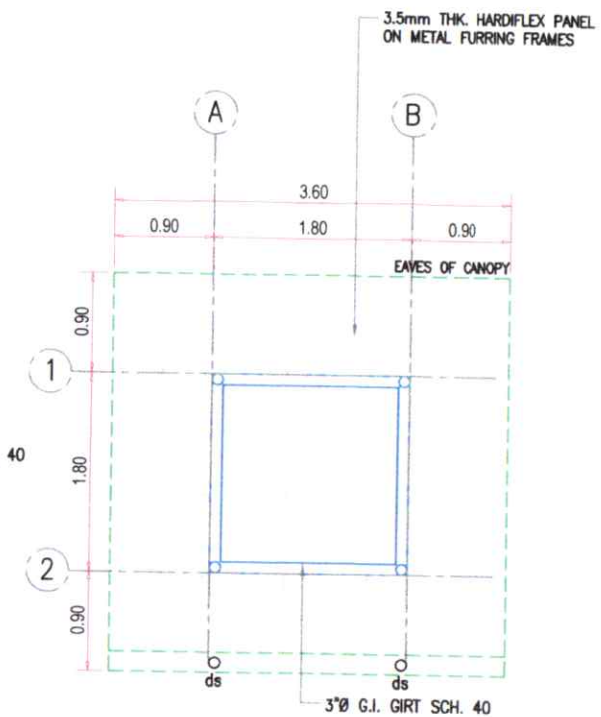
REVISION	PROJECT TITLE:	DRAWN BY:	CHECKED BY:	RECOMMENDED BY:	APPROVED BY:	SHEET CONTENTS:
	REPAINTING/DERUSTING OF FENCE AND MOVABLE GUARDHOUSE					
	PORT OF: KOLAMBUGAN	DENNIS S. GAMBAYA Engineering Assistant A	COLIN KAY R. CAJOTE Supervising Engineer A	JOEL B. ESCALA Manager ESD	MEDARDO I. SOSOBRADO, JR. Acting Port Manager	<ul style="list-style-type: none"> INSIDE ELEVATION OF GATE FRONT (OUTSIDE) ELEVATION OF GATE LEFT SIDE ELEVATION OF GATE
	DATE INSPECTED: JUNE 29, 2023					
	DATE DRAWN: JULY 03, 2023					
	SHEET NUMBER: 3 of 7					



FLOOR PLAN
SCALE NTS



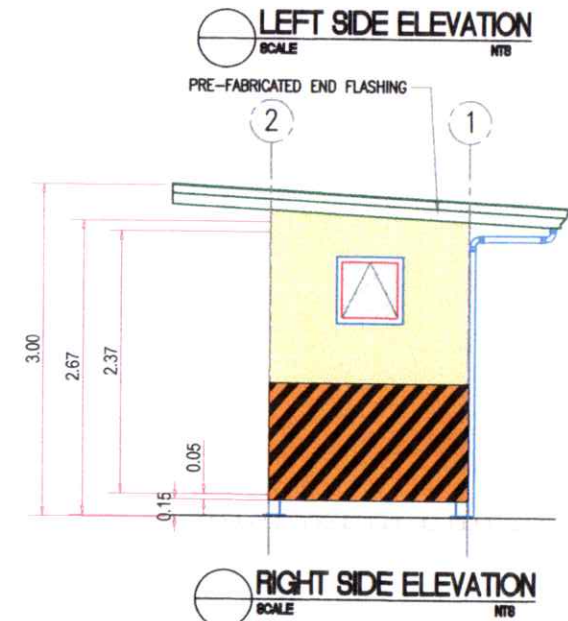
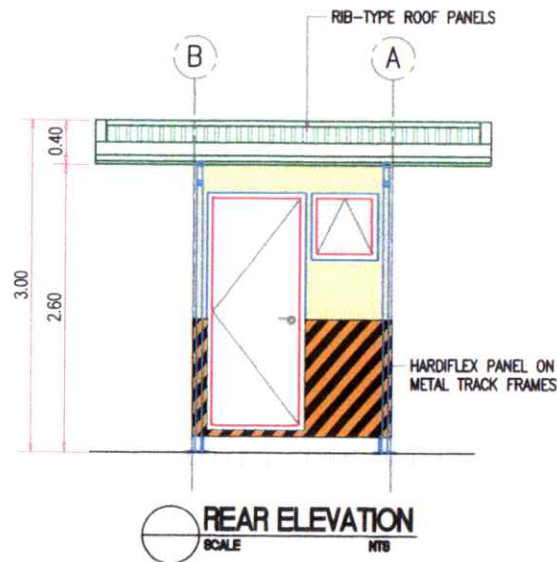
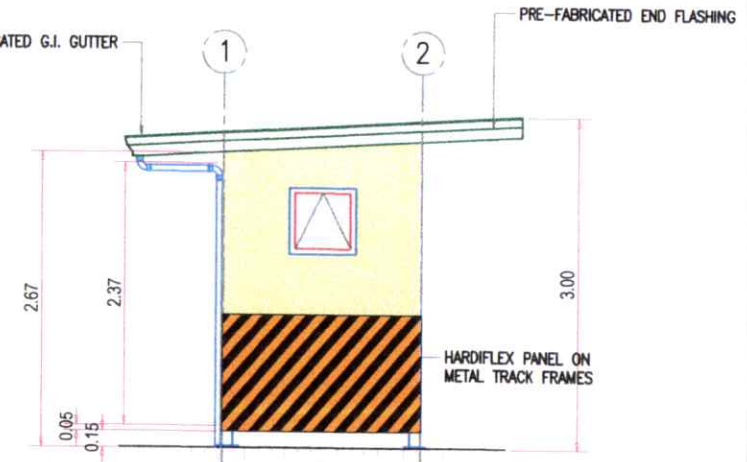
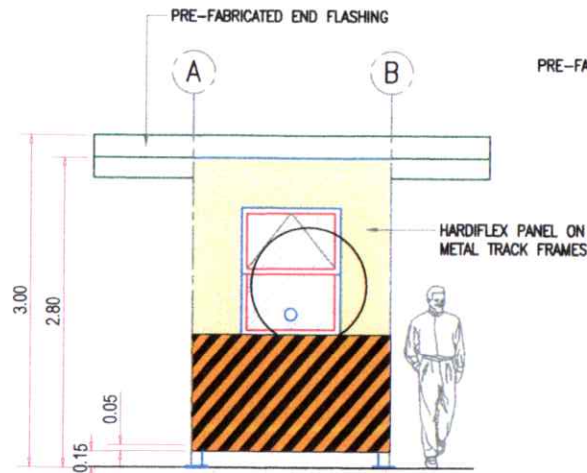
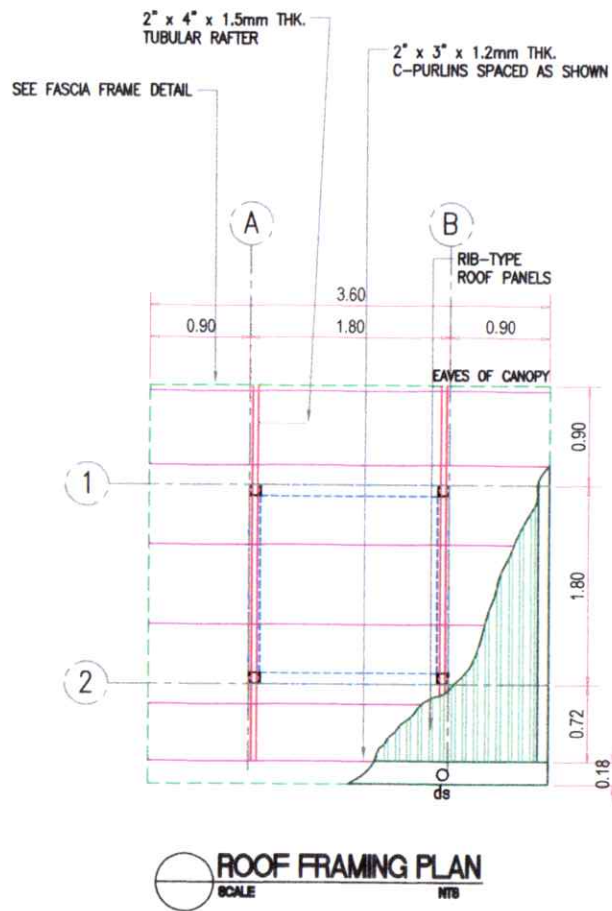
FLOOR FRAMING PLAN
SCALE NTS



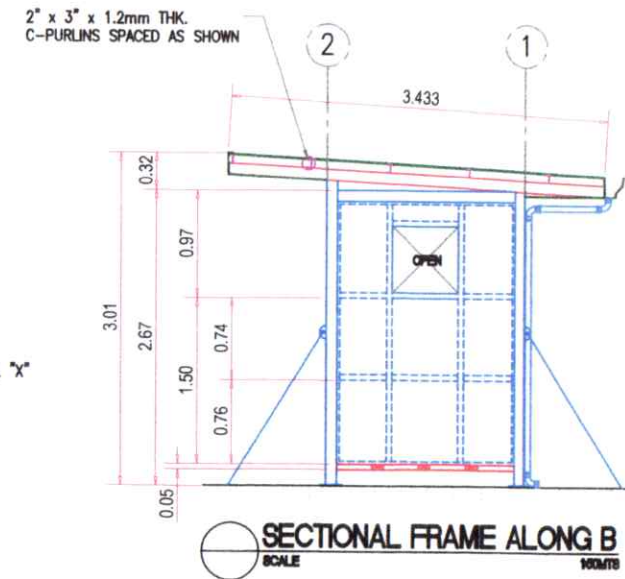
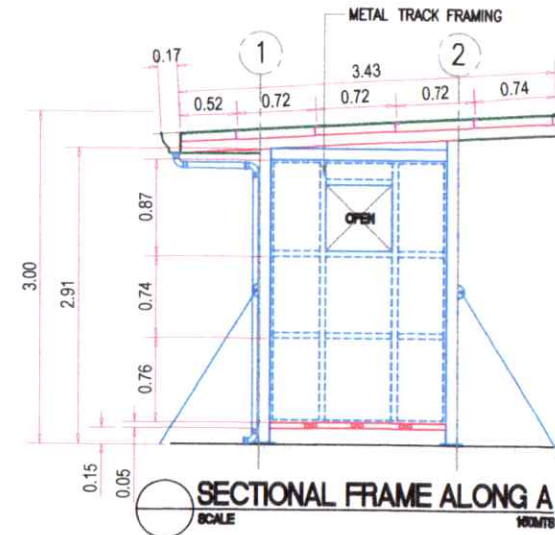
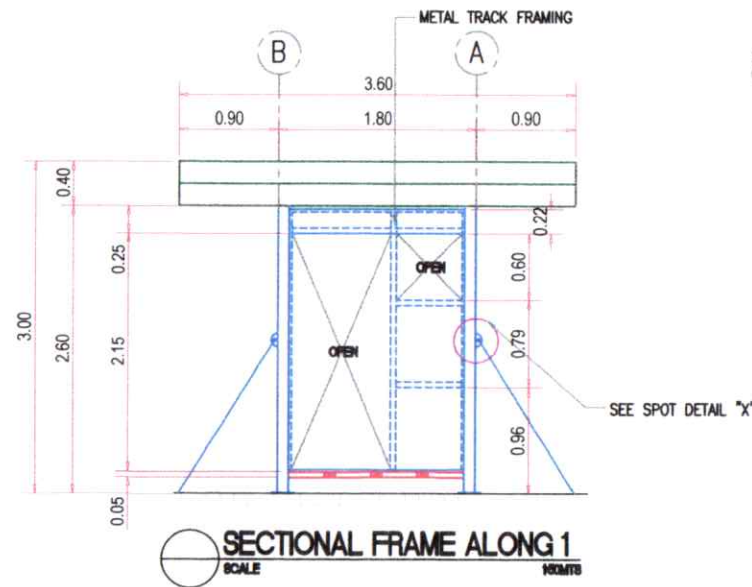
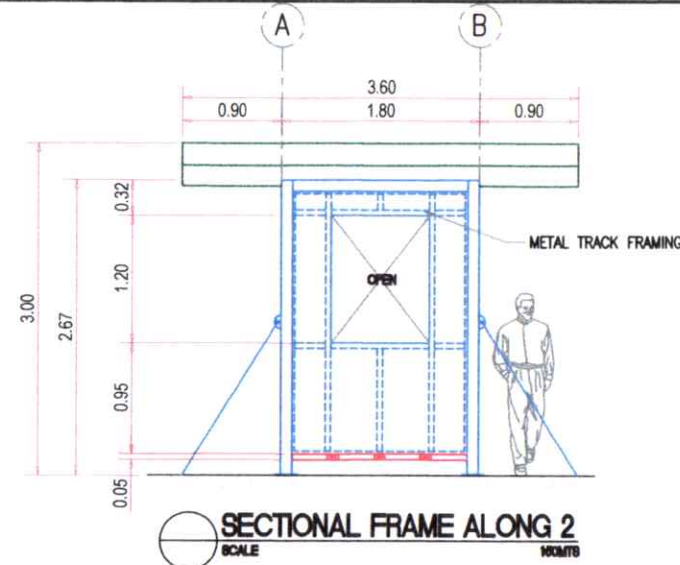
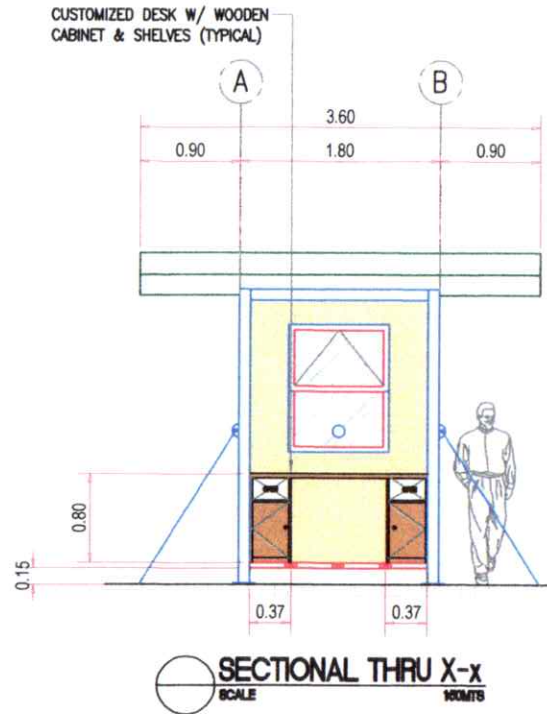
ROOF GIRT / REFLECTED CEILING PLAN
SCALE NTS



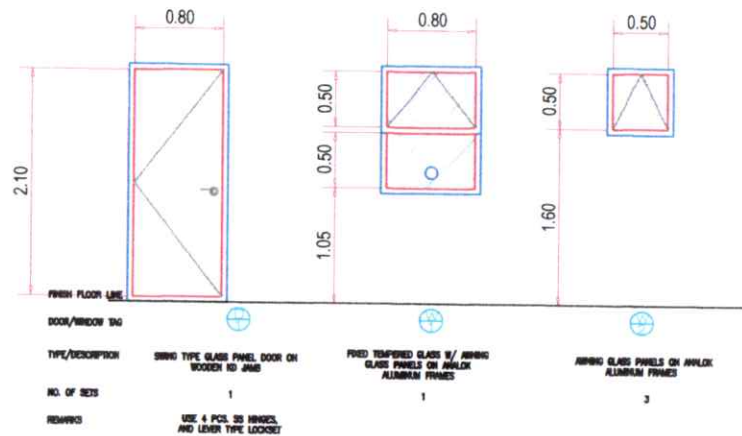
REVISION	PROJECT TITLE:	DRAWN BY:	CHECKED BY:	RECOMMENDED BY:	APPROVED BY:	SHEET CONTENTS:
	REPAINTING/DERUSTING OF FENCE AND MOVABLE GUARDHOUSE					
	PORT OF: KOLAMBUGAN	DENNIS S. CAMBAYA Engineering Assistant A	COLIN KAY R. CAJOTE Supervising Engineer A	JOEL B. ESCALA Manager ESD	MEDARDO I. SOSOBRAO, JR. Harbor Port Manager	<ul style="list-style-type: none"> - FLOOR PLAN - FLOOR FRAMING PLAN - ROOF GIRT/ REFLECTED CEILING PLAN
	DATE INSPECTED: JUNE 29, 2023					
	DATE DRAWN: JULY 03, 2023					
	SHEET NUMBER: 4 of 7					



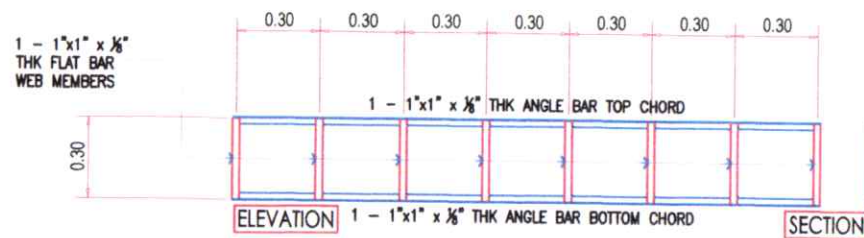
REVISION	PROJECT TITLE:	DRAWN BY:	CHECKED BY:	RECOMMENDED BY:	APPROVED BY:	SHEET CONTENTS:
	REPAINTING/DERUSTING OF FENCE AND MOVABLE GUARDHOUSE					
	PORT OF: KOLAMBUGAN					
	DATE INSPECTED: JUNE 29, 2023					
	DATE DRAWN: JULY 03, 2023					
	SHEET NUMBER: 5 of 7					
		DENNIS S. CAMBAYA Engineering Assistant A	COLIN KAY R. CAJOTE Supervising Engineer A	JOEL B. ESCALA Manager ESD	MEDARDO I. SOSOBRAO, JR. Port Manager	<ul style="list-style-type: none"> - ROOF FRAMING PLAN - FRONT SECTION - LEFT SIDE ELEVATION - RIGHT SIDE ELEVATION - REAR ELEVATION



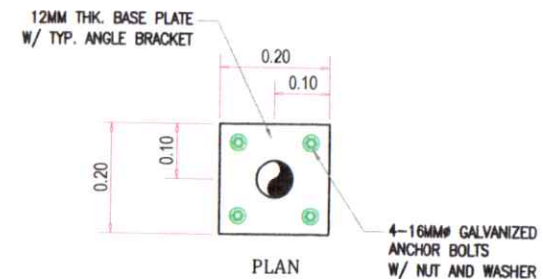
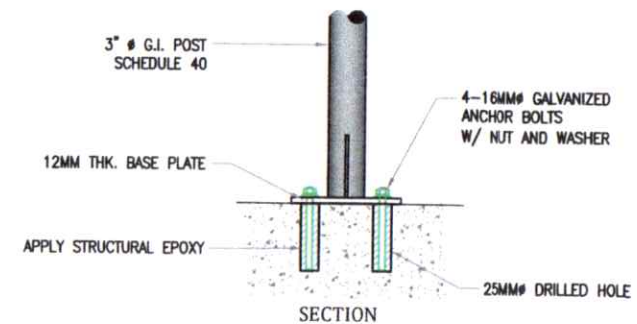
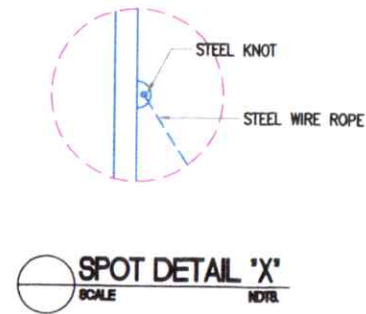
REVISION	PROJECT TITLE:	DRAWN BY:	CHECKED BY:	RECOMMENDED BY:	APPROVED BY:	SHEET CONTENTS:
	REPAINTING/DERUSTING OF FENCE AND MOVABLE GUARDHOUSE					
	PORT OF: KOLAMBUGAN	DENNIS S. CAMBAYA Engineering Assistant A	SOLIN KAY R. CAJOTE Supervising Engineer A	JOEL B. ESCALA Manager ESD	MEDARDO SOSOBRAO, JR. Assistant Port Manager	<ul style="list-style-type: none"> - SECTION THRU X-X - SECTION FRAME ALONG 1 - SECTION FRAME ALONG 2 - SECTION FRAME ALONG A - SECTION FRAME ALONG B
	DATE INSPECTED: JUNE 29, 2023					
	DATE DRAWN: JULY 03, 2023					
	SHEET NUMBER: 4 of 7					



SCHEDULE OF DOOR AND WINDOWS
SCALE: 1/8"=1'-0"



FASCIA FRAME DETAIL
SCALE: 1/8"=1'-0"



SPOT DETAIL 'A'
SCALE: 1/8"=1'-0"



REVISION	PROJECT TITLE:	DRAWN BY:	CHECKED BY:	RECOMMENDED BY:	APPROVED BY:	SHEET CONTENTS:
	REPAINTING/DERUSTING OF FENCE AND MOVABLE GUARDHOUSE					
	PORT OF: KOLAMBUGAN	DENNIS S. CAMBAYA Engineering Assistant A	COLIN KAY R. RAJOTE Supervising Engineer A	JOEL B. ESCALA Manager ESD	MEDARDO I. SOSOBRADO, JR. Port Manager	<ul style="list-style-type: none"> - SECTION - SPOT DETAIL "A" - FASCIA FRAME DETAIL - SCHEDULE OF DOORS AND WINDOW
	DATE INSPECTED: JUNE 29, 2023					
	DATE DRAWN: JULY 03, 2023					
	SHEET NUMBER: 1 of 7					