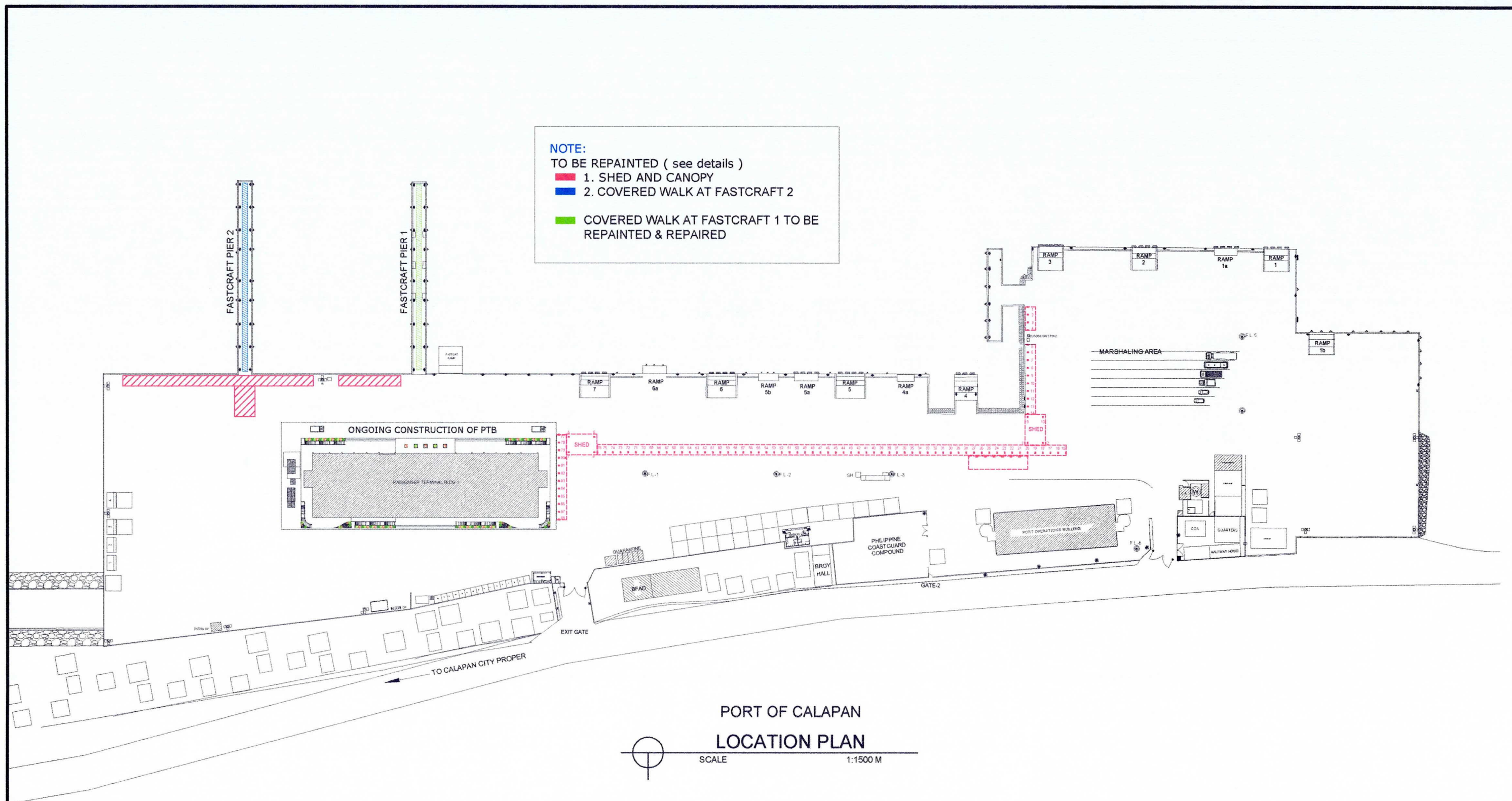



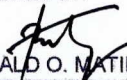

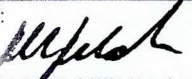


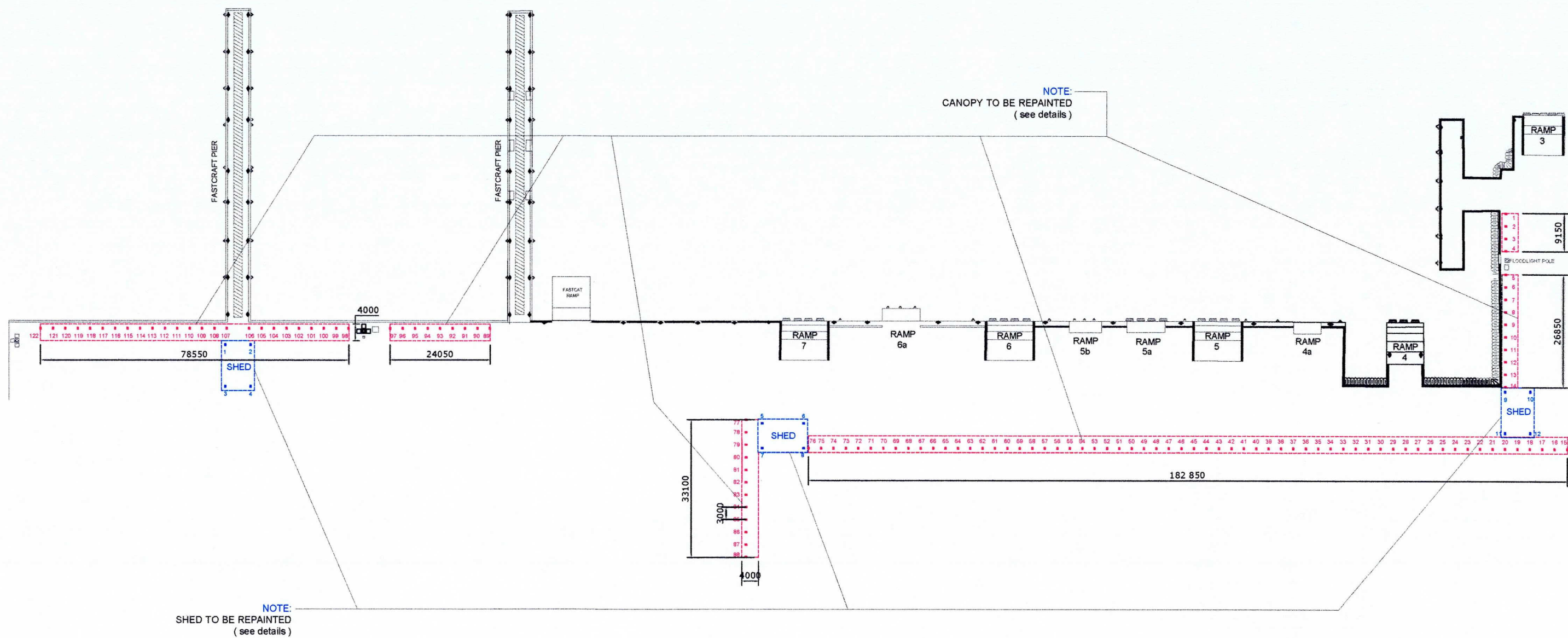


VARIOUS REPAIR AND REPAINTING WORKS

PORT OF CALAPAN, ORIENTAL MINDORO



 <p>PHILIPPINE PORTS AUTHORITY PMO- MINDORO</p>	PROJECT TITLE: VARIOUS REPAIR AND REPAINTING WORKS PORT OF CALAPAN, ORIENTAL MINDORO					SHEET CONTENTS:	SCALE: AS SHOWN
	PREPARED BY:  ROME L. C. MALUBAY Draftsman II	SUBMITTED BY:  JESSIE J. MERILLO Engineer B	CHECKED / REVIEWED BY:  RONALD O. MATIBAG Acting Principal Engineer A	RECOMMENDING APPROVAL BY:  MARGARITO F. DIMAILIG Division Manager A, ESD	APPROVED BY:  ELVIS R. MEDALLA Port Manager A	AS SHOWN	SHEET NO. 1 of 11
							DATE : 24 AUGUST, 2023



GENERAL PLAN OF COVERED WALK

Showing numbers of Columns for Canopy & Shed



PROJECT TITLE: VARIOUS REPAIR AND REPAINTING WORKS
PORT OF CALAPAN, ORIENTAL MINDORO

PREPARED BY:

ROMELL C. MALUBAY
Draftsman II

SUBMITTED BY:

JESSIE J. MERILLO
Engineer B

CHECKED / REVIEWED BY:

RONALD O. MATIBAG
Acting Principal Engineer A

RECOMMENDING APPROVAL BY:

MARGARITO P. DIMAILIG
Division Manager A, ESD

APPROVED BY:

ELVIS R. MEDALLA
Port Manager A

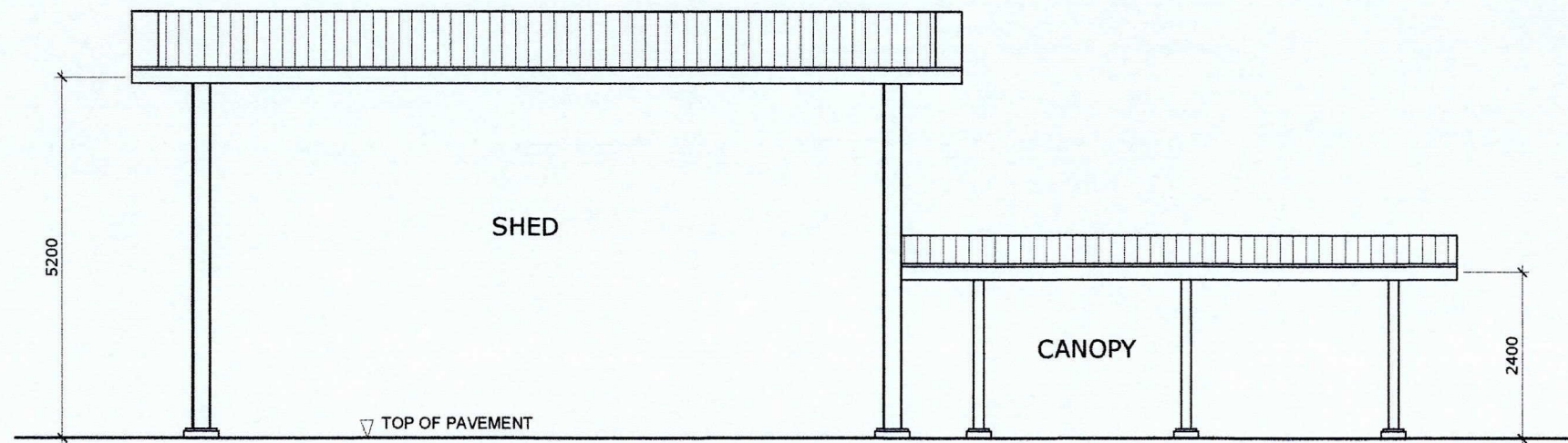
SHEET CONTENTS:

AS SHOWN

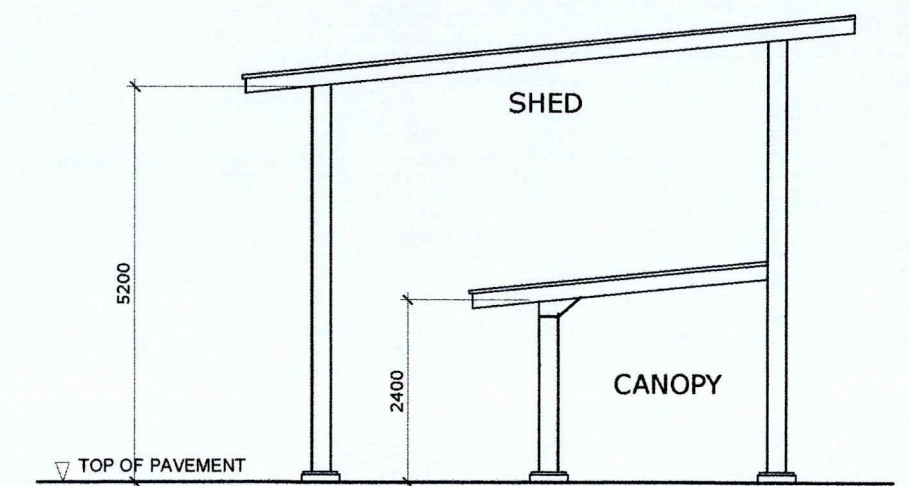
SCALE:
AS SHOWN

SHEET NO.
2 of 11

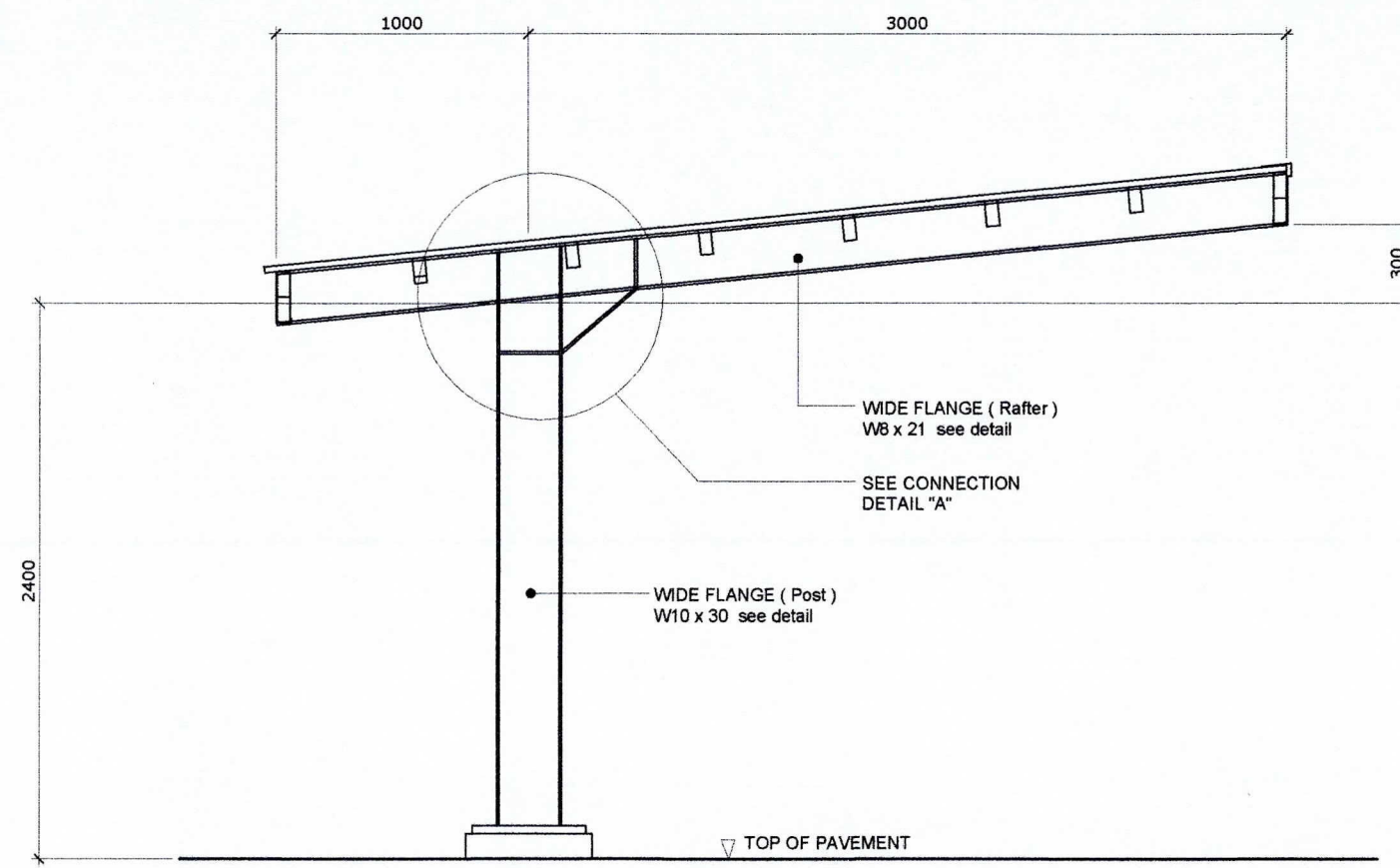
DATE:
24 AUGUST, 2023



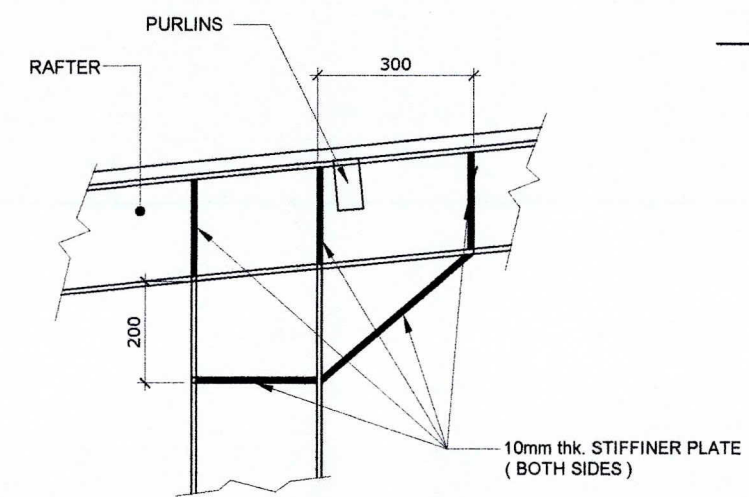
TYPICAL FRONT ELEVATION
SCALE 1:100 M.



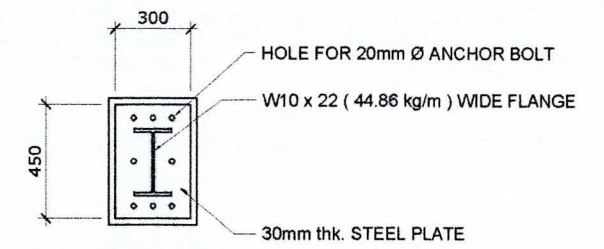
TYPICAL SIDE ELEVATION
SCALE 1:100 M.



CANOPY STEEL STRUCTURE DETAIL
SCALE 1:30 M.



CONNECTION DETAIL "A"



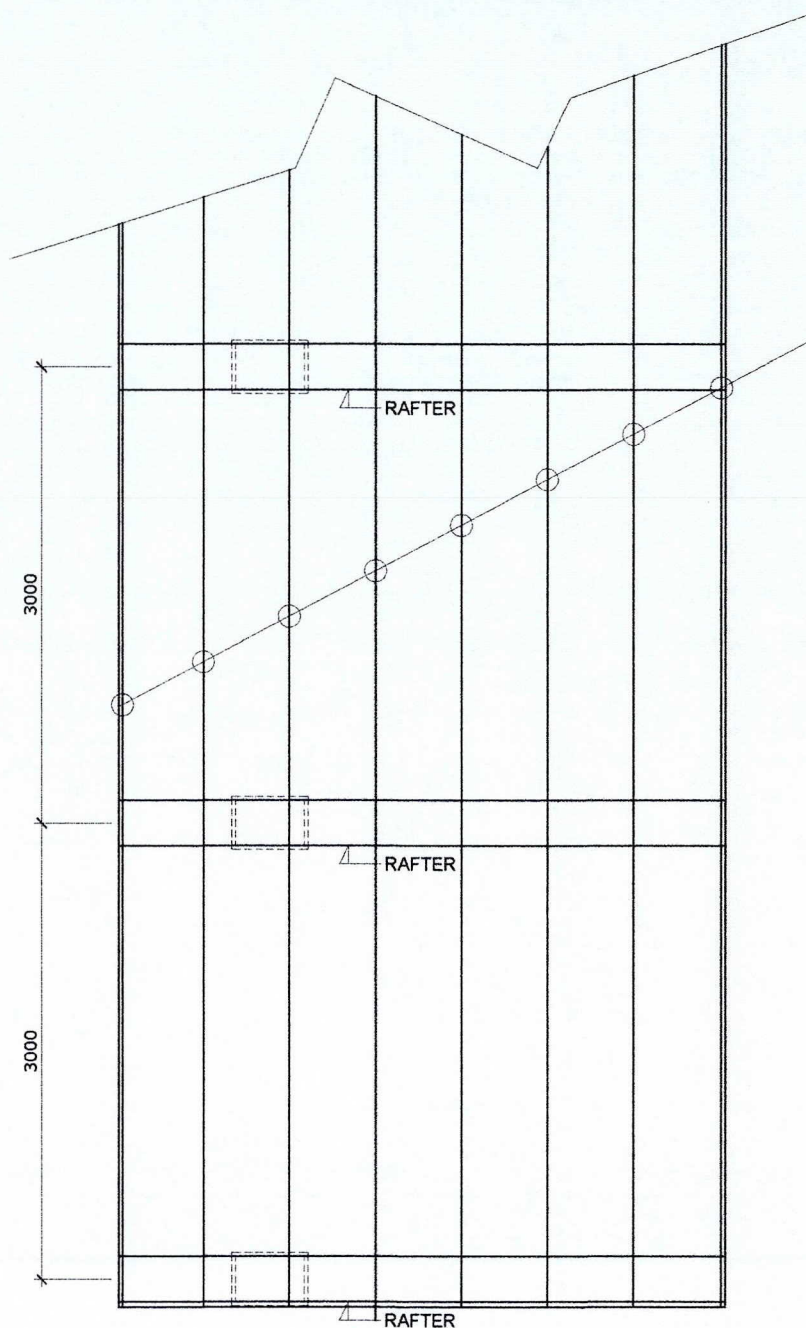
BASE PLATE

NOTE:
SHED AND CANOPY TO BE REPAINTED (BASE PLATE, POST, TRUSSES AND PEDESTAL)
*REPAINTING WORKS ON STEEL
1. SURFACE PREPARATION
2. USE RUST CONVERTER
3. USE EPOXY PRIMER
4. USE AUTOMOTIVE PAINT

*REPAINTING WORKS ON PEDESTAL (BLACK AND YELLOW STRIPE)
1. SURFACE PREPARATION
2. USE EPOXY PRIMER
3. USE REFLECTORIZED PAINT



PROJECT TITLE: VARIOUS REPAIR AND REPAINTING WORKS PORT OF CALAPAN, ORIENTAL MINDORO						SHEET CONTENTS:	SCALE: AS SHOWN
PREPARED BY: ROMEIL C. MALUBAY Draftsman II	SUBMITTED BY: JESSIE J. MERILLO Engineer B	CHECKED / REVIEWED BY: RONALD O. MATIBAG Acting Principal Engineer A	RECOMMENDING APPROVAL BY: MARGARITO P. DIMALIG Division Manager A, ESD	APPROVED BY: ELVIS R. MEDALLA Port Manager A		AS SHOWN	SHEET NO. 3 of 11
							DATE : 24 AUGUST, 2023

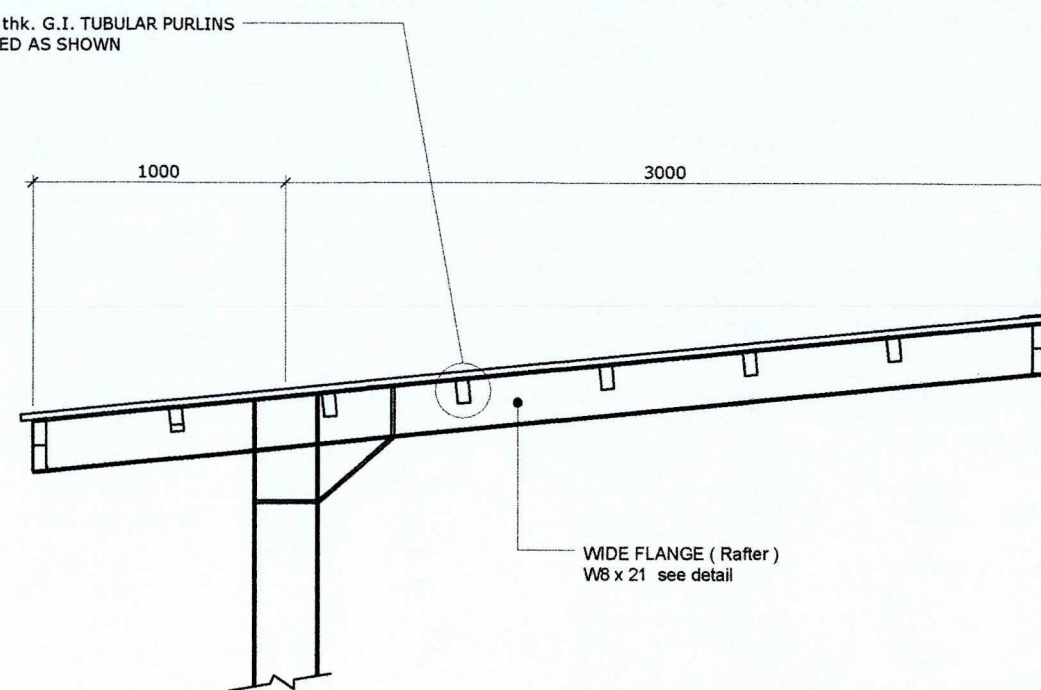


COVERED WALK
CANOPY ROOF FRAMING PLAN

SCALE 1:50 M.

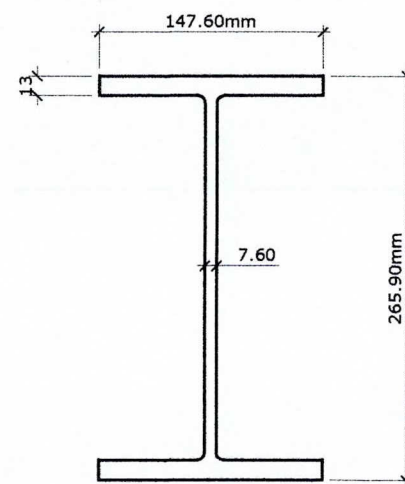
NOTE:
SHED AND CANOPY TO BE REPAINTED
(BASE PLATE, POST, TRUSSES AND PEDESTAL)
*REPAINTING WORKS ON STEEL
1. SURFACE PREPARATION
2. USE RUST CONVERTER
3. USE EPOXY PRIMER
4. USE AUTOMOTIVE PAINT

*REPAINTING WORKS ON PEDESTAL
(BLACK AND YELLOW STRIPE)
1. SURFACE PREPARATION
2. USE EPOXY PRIMER
3. USE REFLECTORIZED PAINT

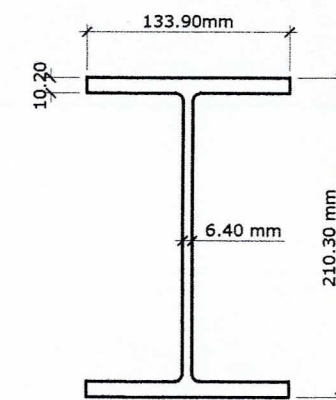


RAFTER & PURLINS DETAIL

SCALE 1:30 M.



W10 x 22 (44.86 kg/m)



W8 x 21 (31.26 kg/m)



PROJECT TITLE: VARIOUS REPAIR AND REPAINTING WORKS
PORT OF CALAPAN, ORIENTAL MINDORO

PREPARED BY:

ROMELL C. MALUBAY
Draftsman II

SUBMITTED BY:

JESSIE J. MERILLO
Engineer

CHECKED / REVIEWED BY:

RONALD O. MATIBAG
Acting Principal Engineer A

RECOMMENDING APPROVAL BY:

MARGARITO F. DMAILIG
Division Manager A, ESD

APPROVED BY:

ELVIS R. MEDALLA
Port Manager A

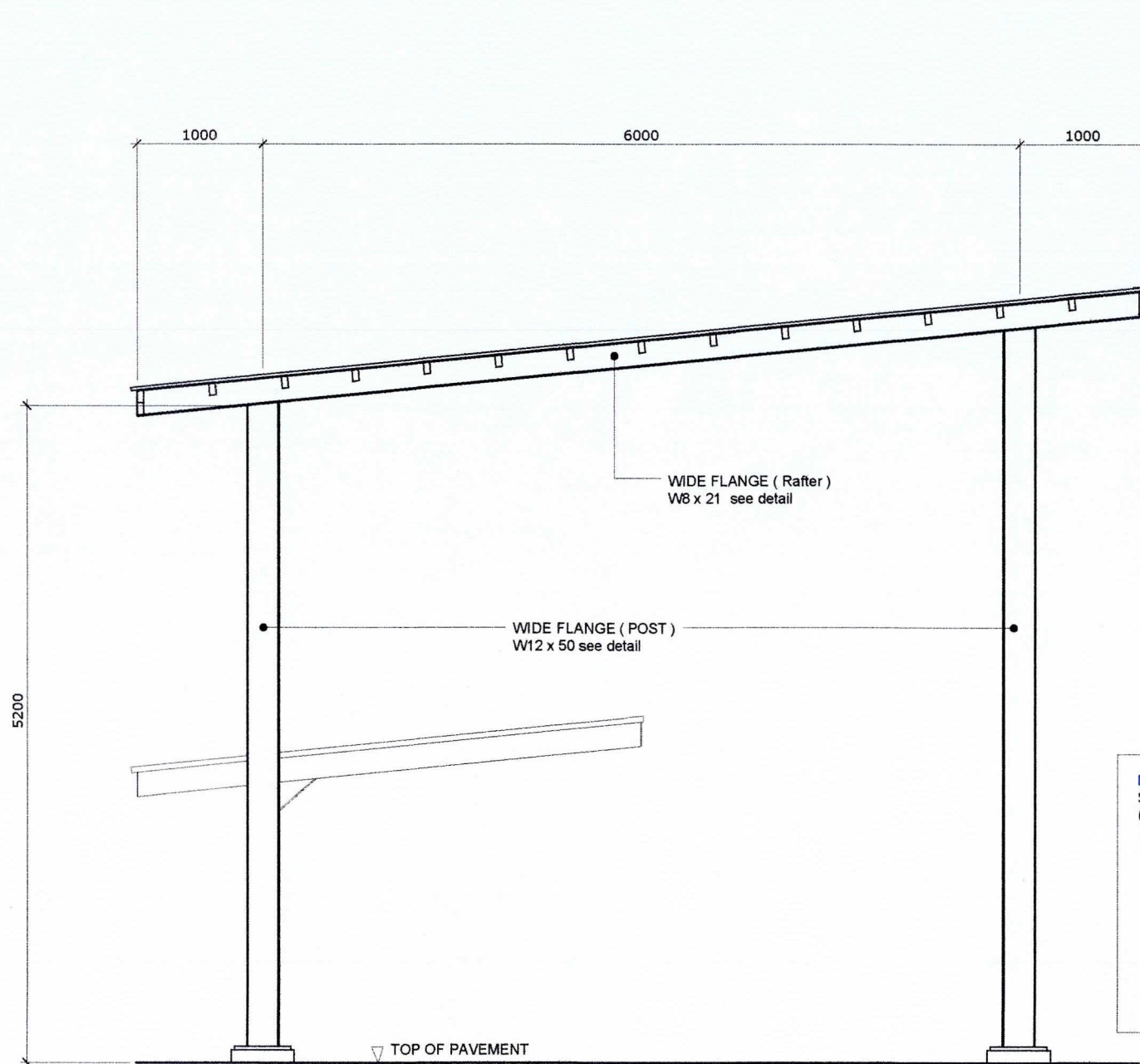
SHEET CONTENTS:

AS SHOWN

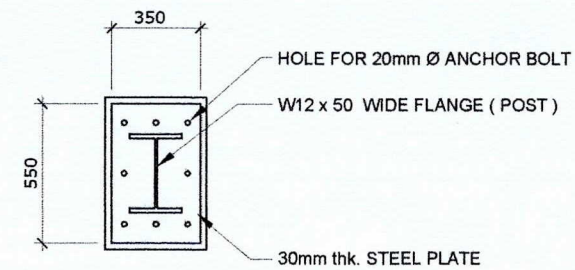
SCALE:
AS SHOWN

SHEET NO.
4 of 11

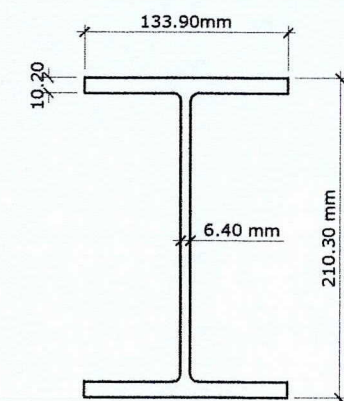
DATE :
24 AUGUST, 2023



SECTION
SHED STEEL STRUCTURE DETAILS
 SCALE 1:50 M.



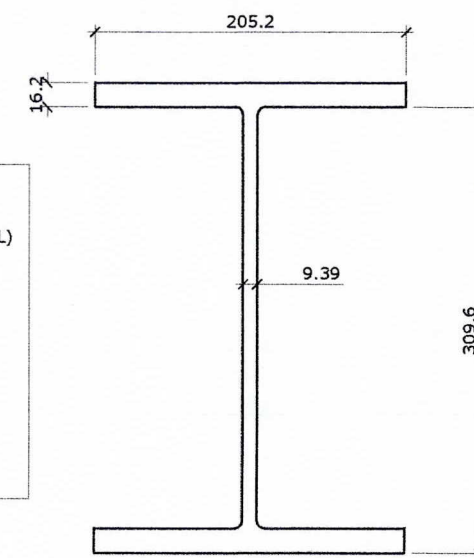
BASE PLATE



RAFTER

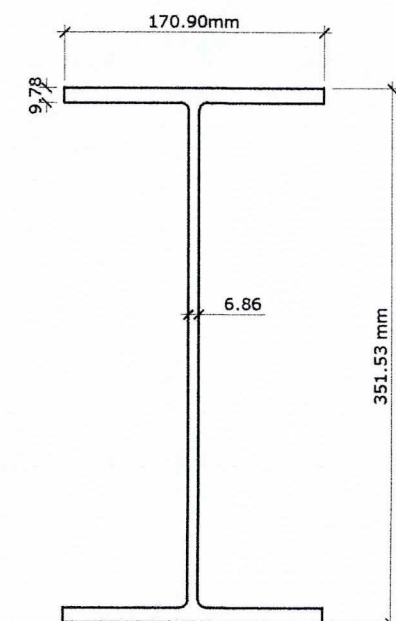
W8 x 21 (31.26 kg/m)

NOTE:
 SHED AND CANOPY TO BE REPAINTED
 (BASE PLATE, POST, TRUSSES AND PEDESTAL)
 *REPAINTING WORKS ON STEEL
 1. SURFACE PREPARATION
 2. USE RUST CONVERTER
 3. USE EPOXY PRIMER
 4. USE AUTOMOTIVE PAINT
 *REPAINTING WORKS ON PEDESTAL
 (BLACK AND YELLOW STRIPE)
 1. SURFACE PREPARATION
 2. USE EPOXY PRIMER
 3. USE REFLECTORIZED PAINT



POST

W12 x 50



BEAM

W14 x 30



PROJECT TITLE: VARIOUS REPAIR AND REPAINTING WORKS
 PORT OF CALAPAN, ORIENTAL MINDORO

PREPARED BY:

ROMEL C. MALUBAY
 Draftsman II

SUBMITTED BY:

JESSIE J. MERILLO
 Engineer B

CHECKED / REVIEWED BY:

RONALD O. MATIBAG
 Acting Principal Engineer A

RECOMMENDING APPROVAL BY:

MARGARITO P. DIMAILIG
 Division Manager A, ESD

APPROVED BY:

ELVIS R. MEDALLA
 Port Manager A

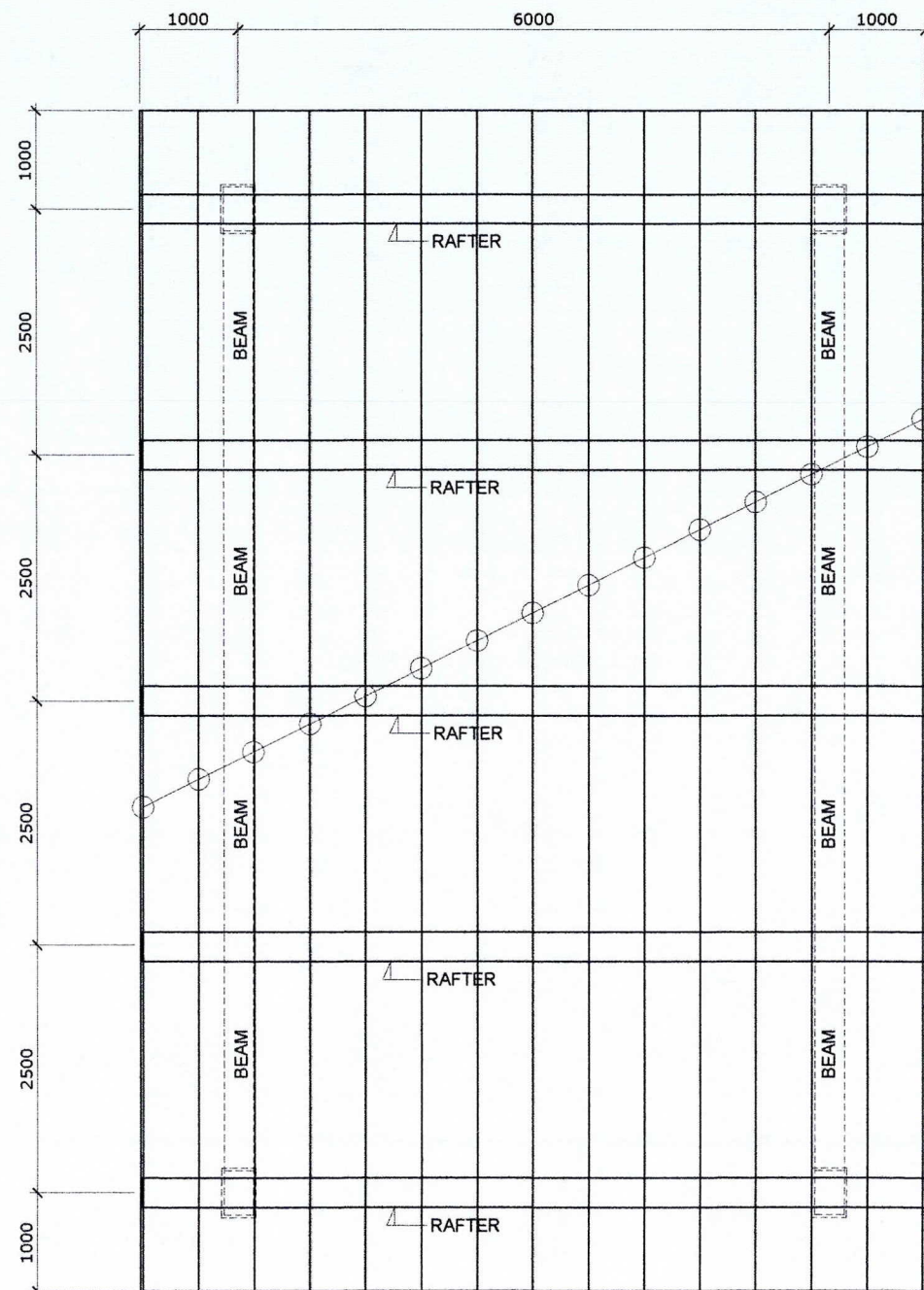
SHEET CONTENTS:

AS SHOWN

SCALE:
 AS SHOWN

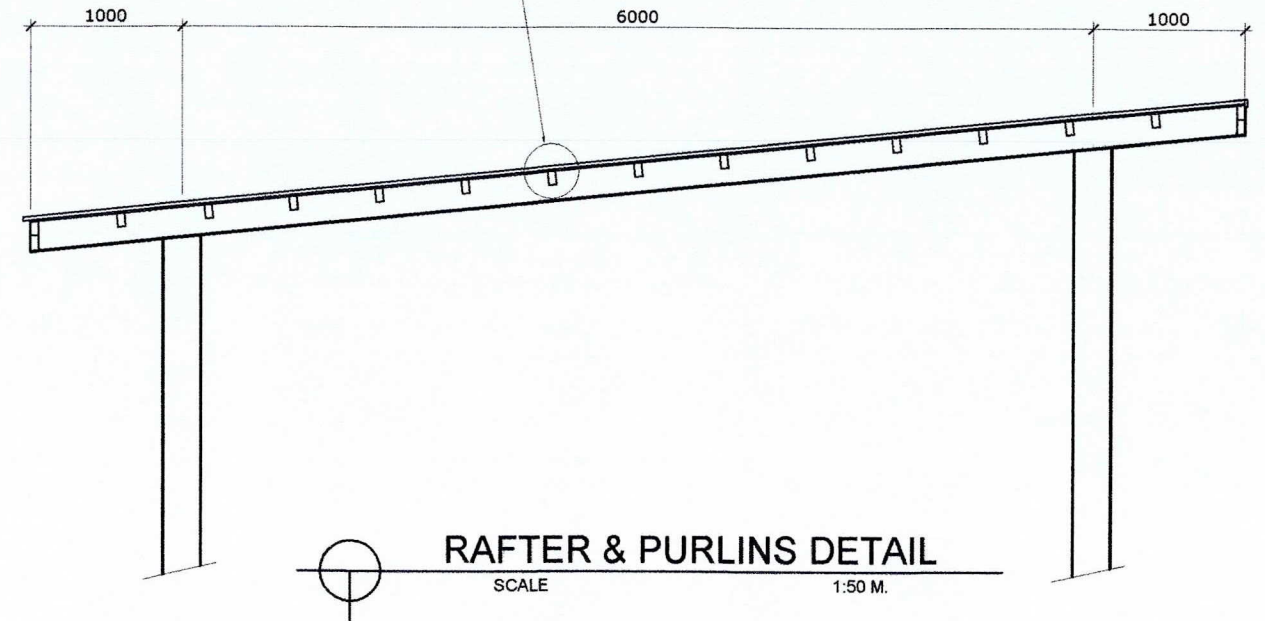
SHEET NO.
 5 of 11

DATE :
 24 AUGUST, 2023



SHED ROOF FRAMING PLAN
SCALE 1:75 M.

100 x 50 x 2.0mm thk. G.I. TUBULAR PURLINS
SPACED AS SHOWN



RAFTER & PURLINS DETAIL
SCALE 1:50 M.

- NOTE:**
SHED AND CANOPY TO BE REPAINTED
(BASE PLATE, POST, TRUSSES AND PEDESTAL)
*REPAINTING WORKS ON STEEL
1. SURFACE PREPARATION
2. USE RUST CONVERTER
3. USE EPOXY PRIMER
4. USE AUTOMOTIVE PAINT

*REPAINTING WORKS ON PEDESTAL
(BLACK AND YELLOW STRIPE)
1. SURFACE PREPARATION
2. USE EPOXY PRIMER
3. USE REFLECTORIZED PAINT



PROJECT TITLE: VARIOUS REPAIR AND REPAINTING WORKS
PORT OF CALAPAN, ORIENTAL MINDORO

PREPARED BY:
Romell C. Malubay
ROMELL C. MALUBAY
Draftsman II

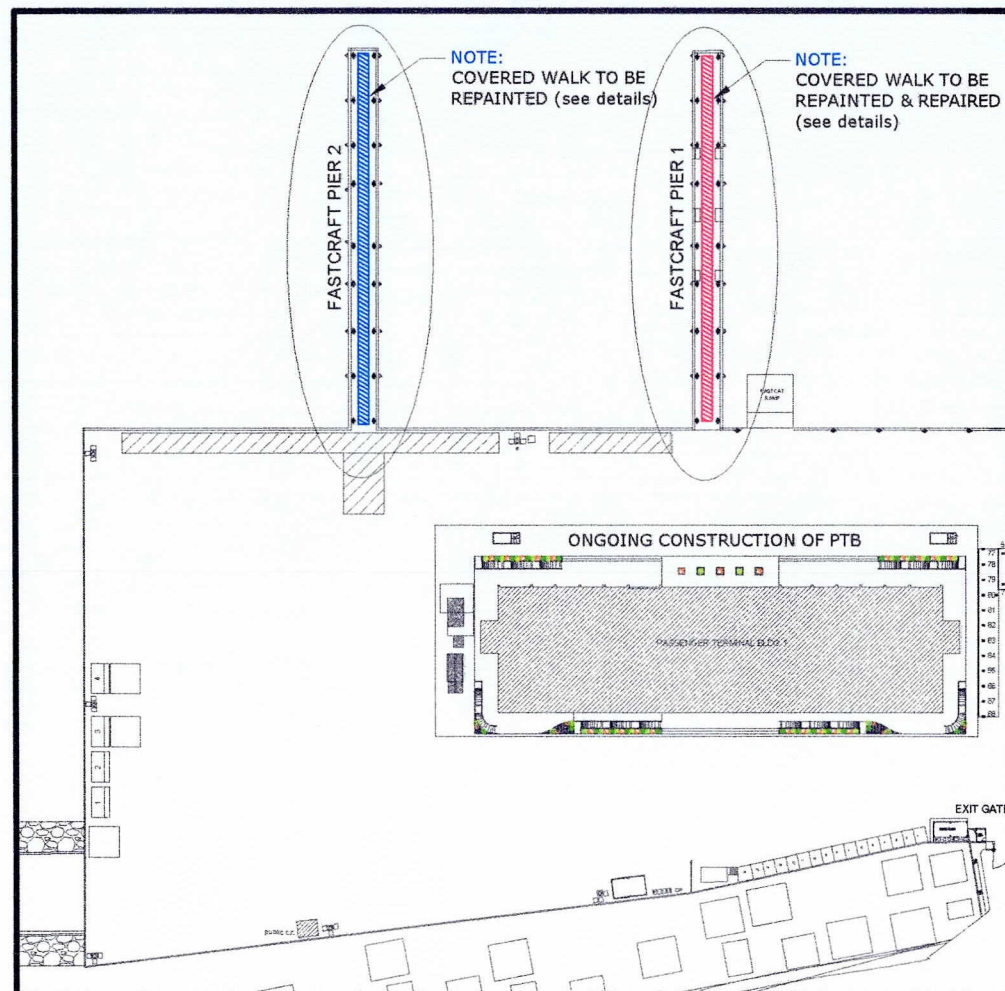
SUBMITTED BY:
Jessie V. Merillo
JESSIE V. MERILLO
Engineer B

CHECKED / REVIEWED BY:
Ronald O. Matibag
RONALD O. MATIBAG
Acting Principal Engineer A

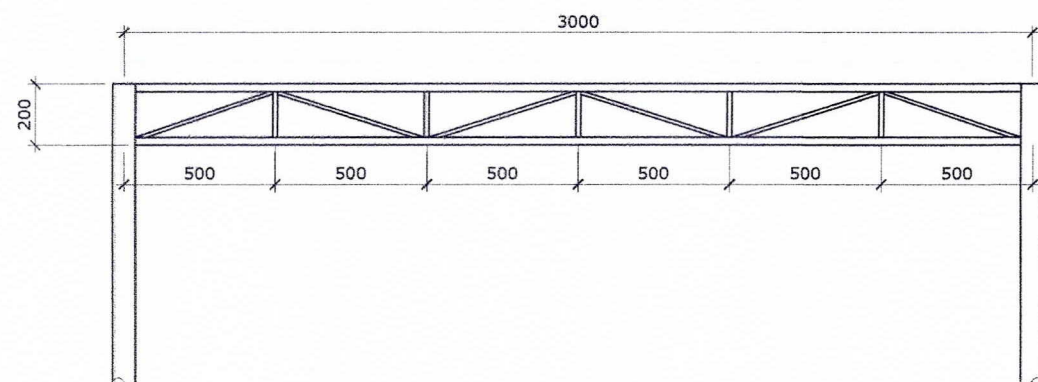
RECOMMENDING APPROVAL BY:
Margarito P. Dimailig
MARGARITO P. DIMAILIG
Division Manager A, ESD

APPROVED BY:
Elvis R. Medalla
ELVIS R. MEDALLA
Port Manager A

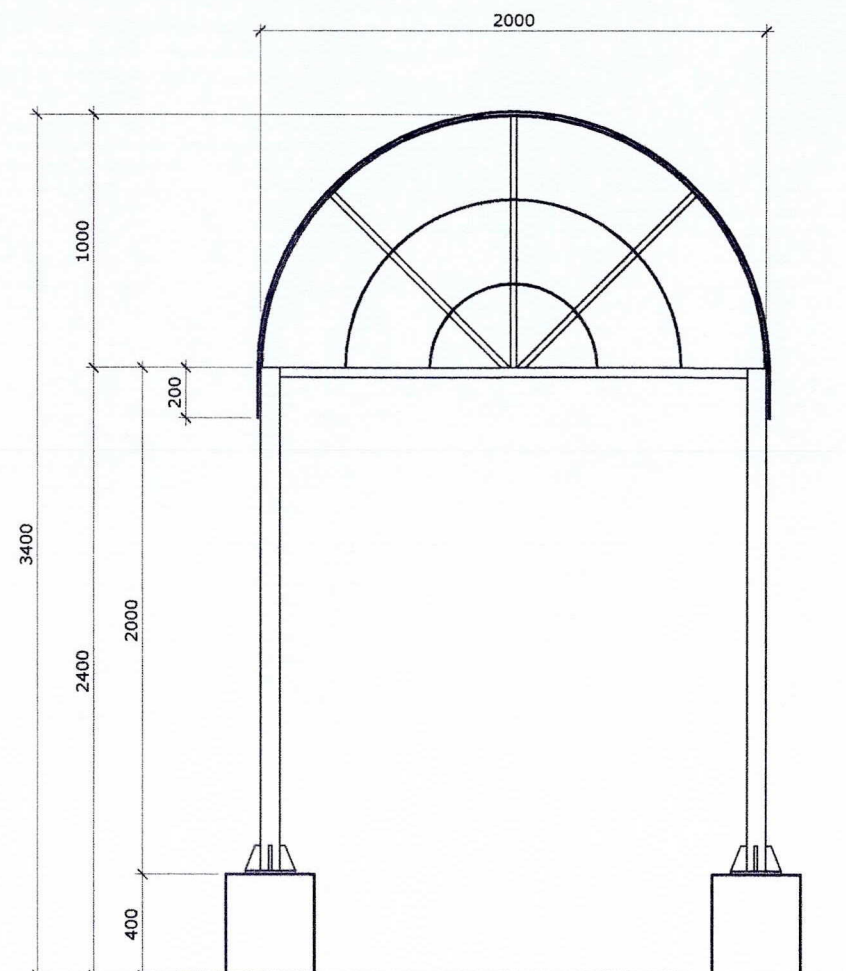
SHEET CONTENTS:	SCALE:
AS SHOWN	AS SHOWN
	SHEET NO.
	6 of 11
	DATE :
	24 AUGUST, 2023



KEY PLAN
SCALE NTS.

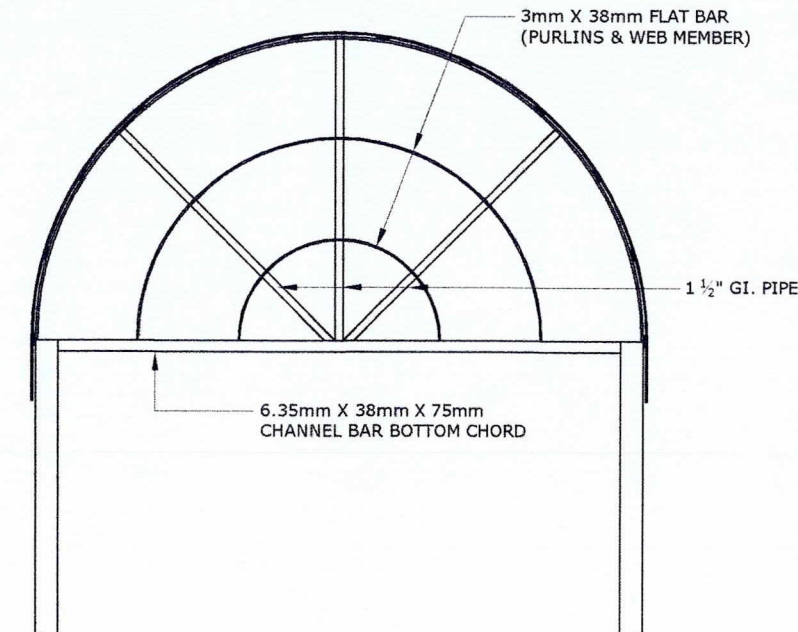


GIRT DETAIL
SCALE 1:25 M.

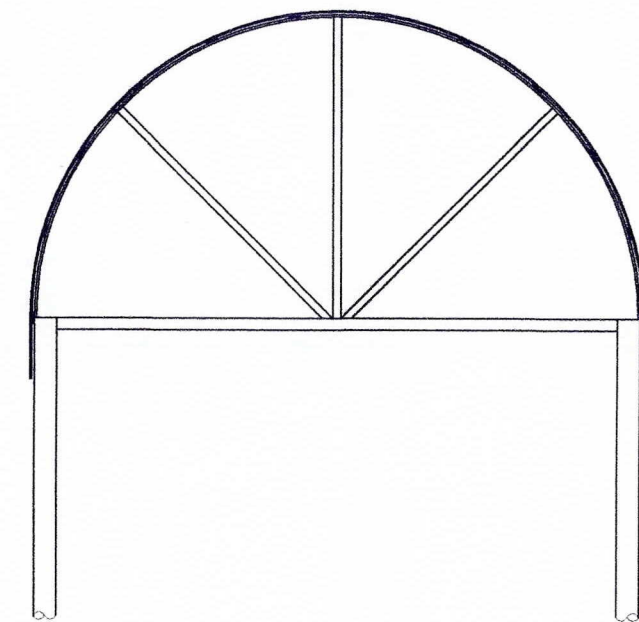


ELEVATION
SCALE 1:30 M.

NOTE:
COVERED WALK AT FASTCRAFT PIER 2 TO BE REPAINTED
(TRUSSES, POSTS, GIRT AND BASE PLATE)
1. SURFACE PREPARATION
2. USE RUST CONVERTER
3. USE EPOXY PRIMER
4. TWO TOP COAT OF AUTOMOTIVE PAINT



TRUSS-A (T-A) DETAIL
SCALE 1:25 M.



TRUSS-B (T-B) DETAIL
SCALE 1:25 M.

EXISTING COVERED WALK AT FASTCRAFT PIER 2



PROJECT TITLE: VARIOUS REPAIR AND REPAINTING WORKS
PORT OF CALAPAN, ORIENTAL MINDORO

PREPARED BY:
Romeil C. Malubay
ROMEIL C. MALUBAY
Draftsman II

SUBMITTED BY:
Jessie J. Merillo
JESSIE J. MERILLO
Engineer B

CHECKED / REVIEWED BY:
Ronald O. Matibag
RONALD O. MATIBAG
Acting Principal Engineer A

RECOMMENDING APPROVAL BY:
Margarito P. Dmailig
MARGARITO P. DMAILIG
Division Manager A, ESD

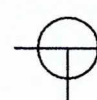
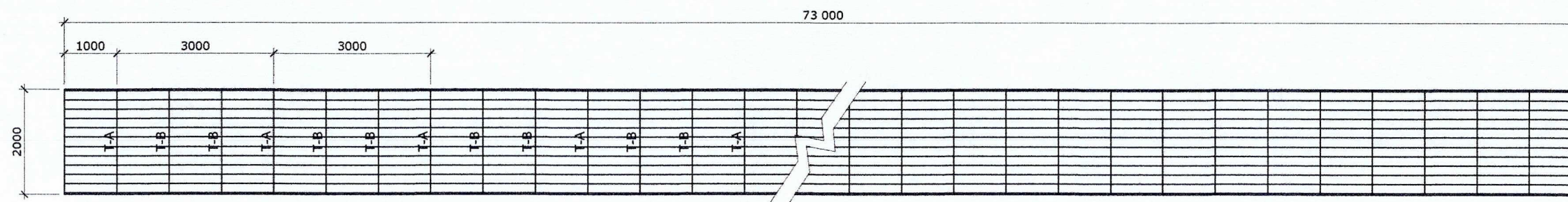
APPROVED BY:
Elvis R. Medalla
ELVIS R. MEDALLA
Port Manager A

SHEET CONTENTS: AS SHOWN

SCALE: AS SHOWN

SHEET NO. 7 of 11

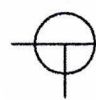
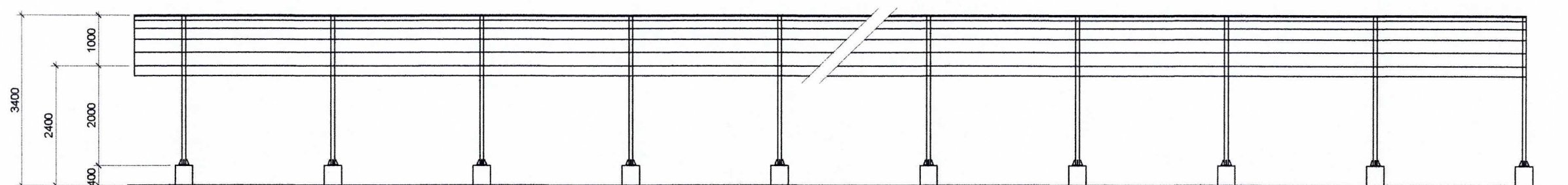
DATE: 24 AUGUST, 2023



PLAN OF COVERED WALK

SCALE 1:100 M.

NOTE:
COVERED WALK AT FASTCRAFT PIER 2 TO BE REPAINTED
(TRUSSES, POSTS, GIRT AND BASE PLATE)
1. SURFACE PREPARATION
2. USE RUST CONVERTER
3. USE EPOXY PRIMER
4. TWO TOP COAT OF AUTOMOTIVE PAINT



ELEVATION

SCALE 1:100 M.

EXISTING COVERED WALK AT FASTCRAFT PIER 2



PROJECT TITLE: VARIOUS REPAIR AND REPAINTING WORKS
PORT OF CALAPAN, ORIENTAL MINDORO

PREPARED BY:

ROMEL C. MALUBAY
Draftsman II

SUBMITTED BY:

JESSIE J. MERILLO
Engineer B

CHECKED / REVIEWED BY:

RONALD O. MATIBAG
Acting Principal Engineer A

RECOMMENDING APPROVAL BY:

MARGARITO P. DIMAILIG
Division Manager A, ESD

APPROVED BY:

ELVIS R. MEDALLA
Port Manager A

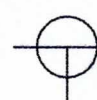
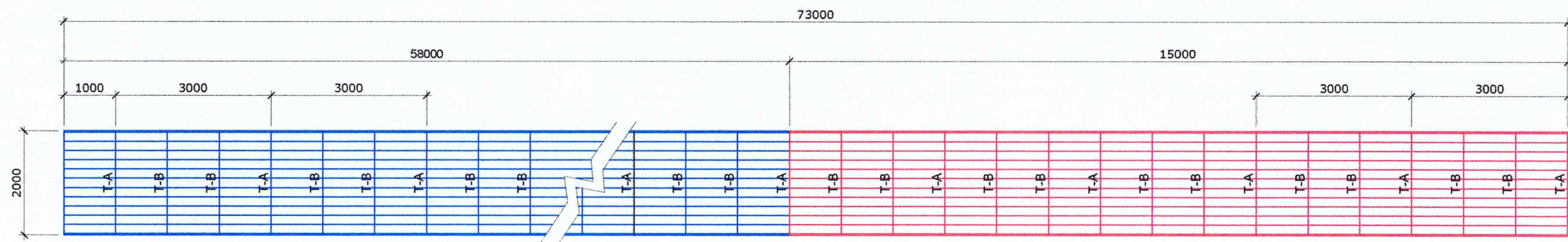
SHEET CONTENTS:

AS SHOWN

SCALE:
AS SHOWN

SHEET NO.
8 of 11

DATE :
24 AUGUST, 2023

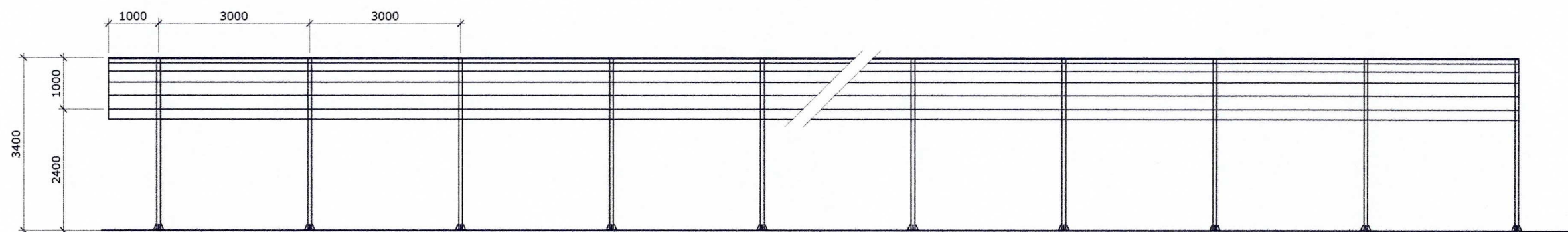


PLAN OF COVERED WALK

SCALE 1:100 M.

NOTE:

- - COVERED WALK AT FASTCRAFT PIER 1 TO BE REPAINTED
- - COVERED WALK AT FASTCRAFT PIER 1 TO BE REPLACED



ELEVATION

SCALE 1:100 M.

EXISTING COVERED WALK AT FASTCRAFT PIER 1



PROJECT TITLE: VARIOUS REPAIR AND REPAINTING WORKS
PORT OF CALAPAN, ORIENTAL MINDORO

PREPARED BY:

ROMELL C. MALUBAY
Draftsman II

SUBMITTED BY:

JESSIE I. MERILLO
Engineer B

CHECKED / REVIEWED BY:

RONALD O. MATIBAG
Acting Principal Engineer A

RECOMMENDING APPROVAL BY:

MARGARITO P. DIMAILIG
Division Manager A, ESD

APPROVED BY:

ELVIS R. MEDALLA
Port Manager A

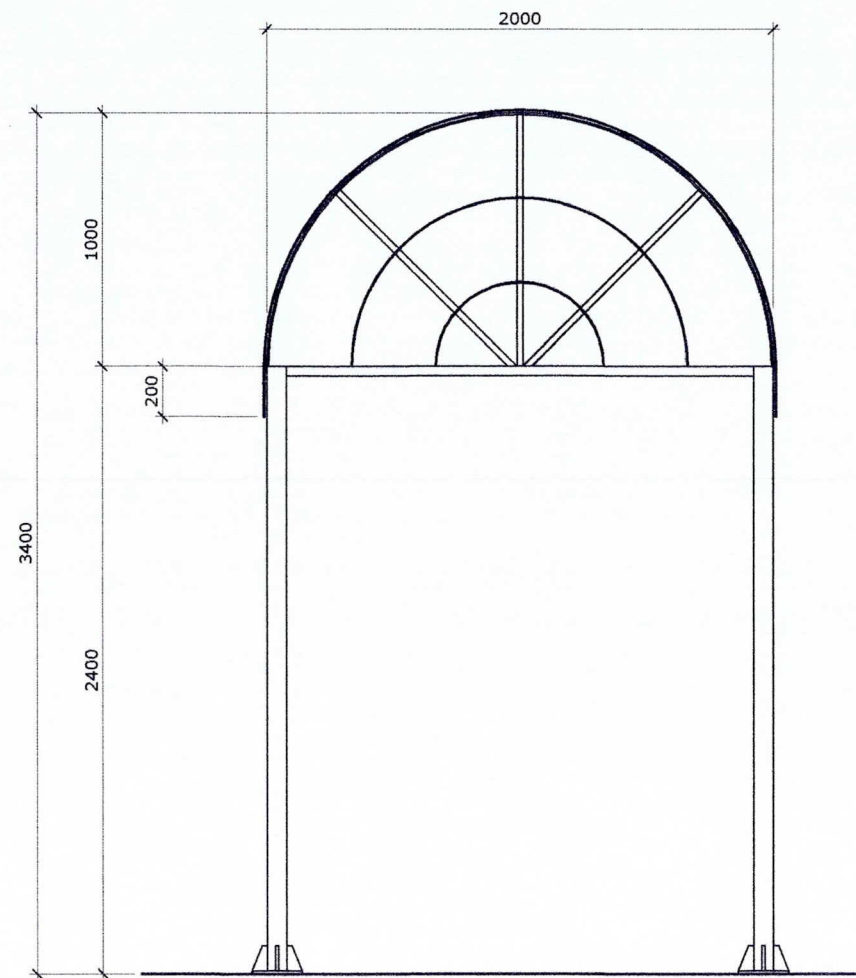
SHEET CONTENTS:

AS SHOWN

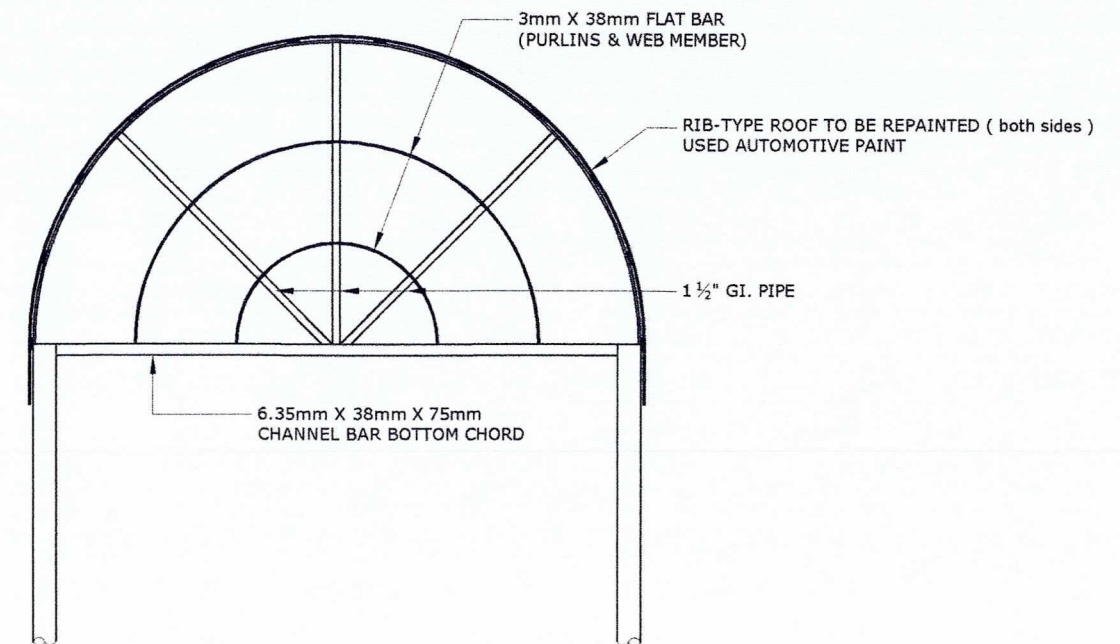
SCALE:
AS SHOWN

SHEET NO.
9 of 11

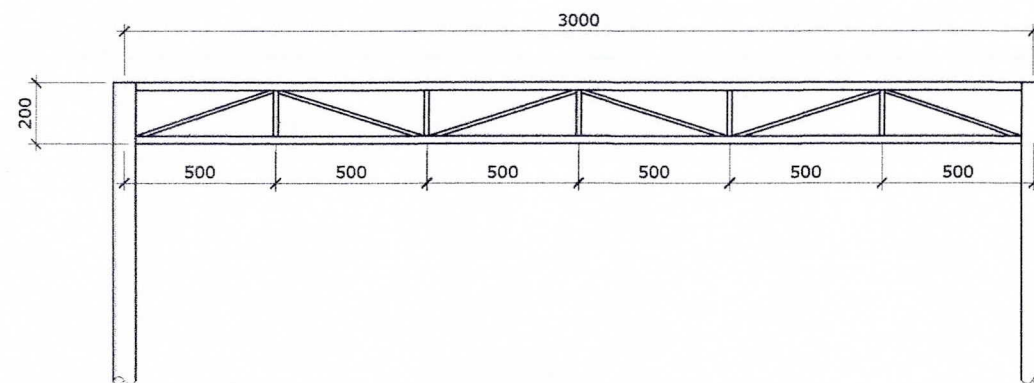
DATE :
24 AUGUST, 2023



ELEVATION
SCALE 1:30 M.



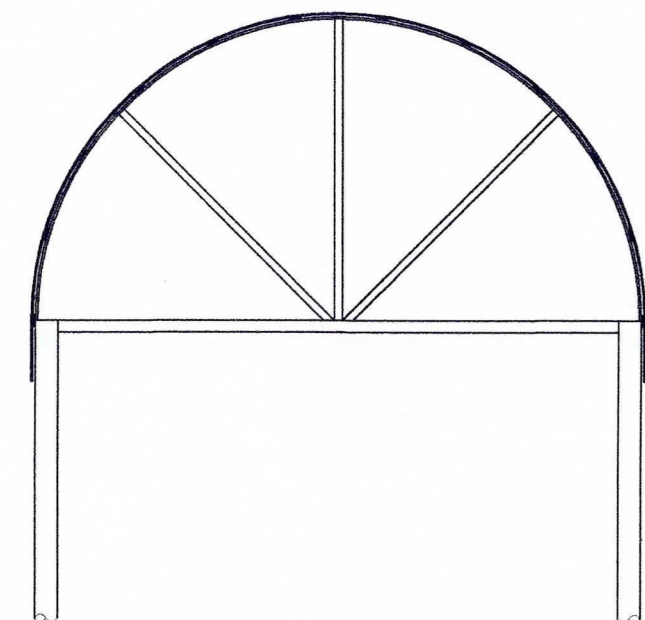
TRUSS-A (T-A) DETAIL
SCALE 1:25 M.



GIRT DETAIL
SCALE 1:25 M.

NOTE:
COVERED WALK AT FASTCRAFT PIER 1 TO BE REPAINTED (TRUSSES, POSTS, GIRT AND BASE PLATE)
1. SURFACE PREPARATION
2. USE RUST CONVERTER
3. USE EPOXY PRIMER
4. TWO TOP COAT OF AUTOMOTIVE PAINT

RIB-TYPE ROOF TO BE REPAINTED (BOTH SIDES)
USED AUTOMOTIVE PAINT



TRUSS-B (T-B) DETAIL
SCALE 1:25 M.

EXISTING COVERED WALK AT FASTCRAFT PIER 1



PROJECT TITLE: VARIOUS REPAIR AND REPAINTING WORKS
PORT OF CALAPAN, ORIENTAL MINDORO

PREPARED BY:
[Signature]
ROMELL C. MALUBAY
Draftsman II

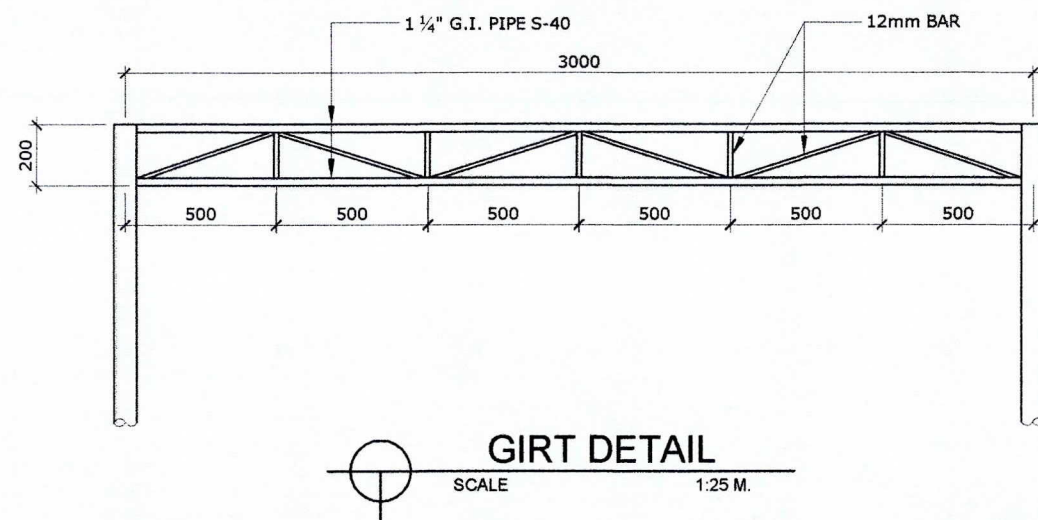
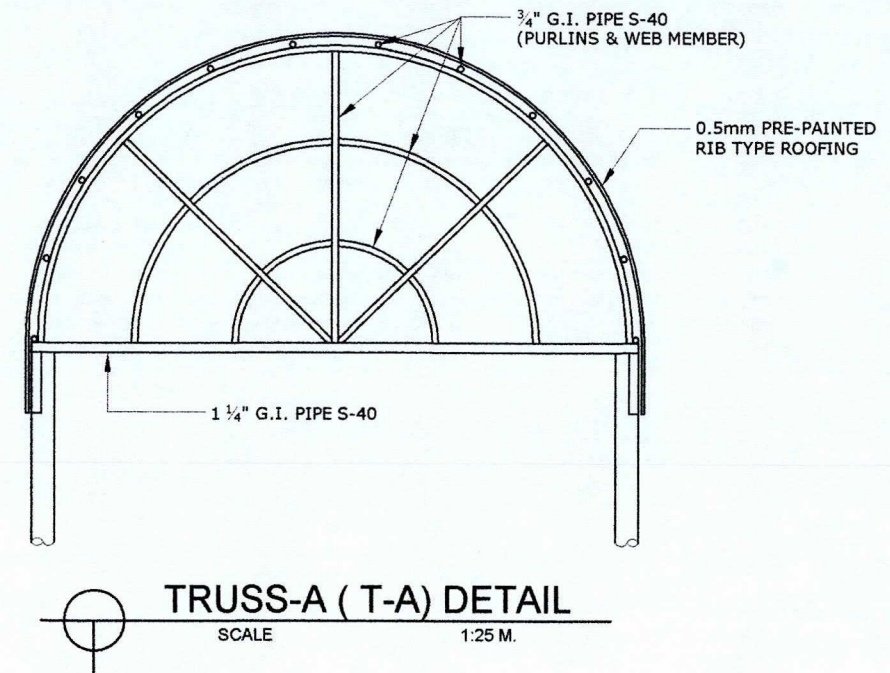
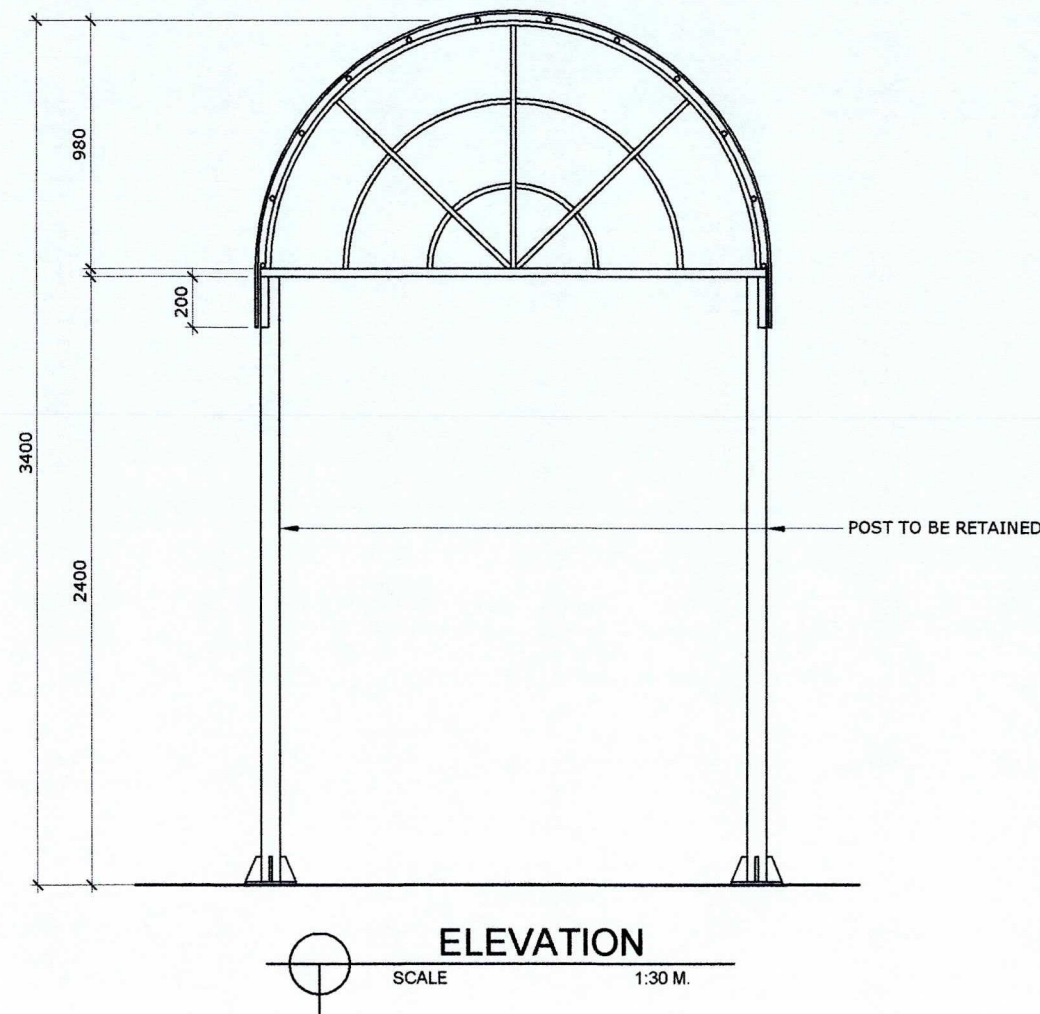
SUBMITTED BY:
[Signature]
JESSIE J. MERILLO
Engineer II

CHECKED / REVIEWED BY:
[Signature]
RONALD O. MATIBAG
Acting Principal Engineer A

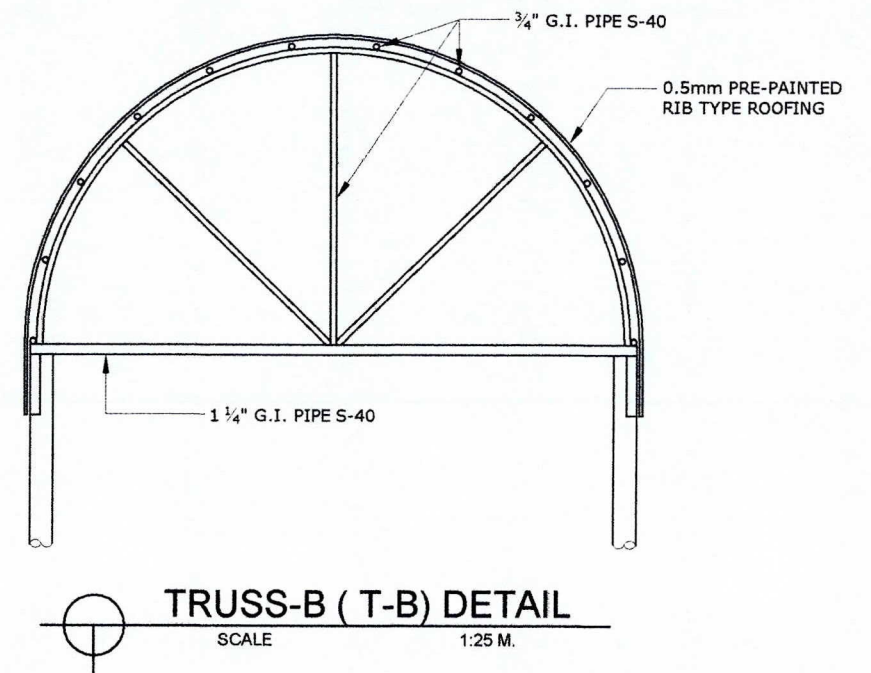
RECOMMENDING APPROVAL BY:
[Signature]
MARGARITO P. DIMAILIG
Division Manager A, ESD

APPROVED BY:
[Signature]
ELVIS R. MEDALLA
Port Manager A

SHEET CONTENTS:	SCALE:
AS SHOWN	AS SHOWN
	SHEET NO.
	10 of 11
	DATE :
	24 AUGUST, 2023



NOTE:
TRUSSES, GIRT AND ROOF OF COVERED WALK AT FINGER 1 TO BE REPLACED
1. USE EPOXY PRIMER
2. TWO TOP COAT OF AUTOMOTIVE PAINT



EXISTING COVERED WALK AT FASTCRAFT PIER 1



PROJECT TITLE: VARIOUS REPAIR AND REPAINTING WORKS
PORT OF CALAPAN, ORIENTAL MINDORO

PREPARED BY:
ROMELL C. MALUBAY
Draftsman II

SUBMITTED BY:
JESSIE J. MERILLO
Engineer B

CHECKED / REVIEWED BY:
RONALD O. MATIBAG
Acting Principal Engineer A

RECOMMENDING APPROVAL BY:
MARGARITO P. DIMAILIG
Division Manager A, ESD

APPROVED BY:
ELVIS R. MEDALLA
Port Manager A

SHEET CONTENTS: AS SHOWN
SCALE: AS SHOWN
SHEET NO. 11 of 11
DATE : 24 AUGUST, 2023