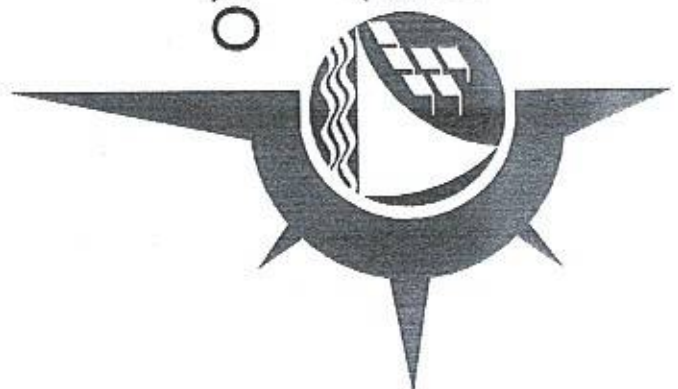
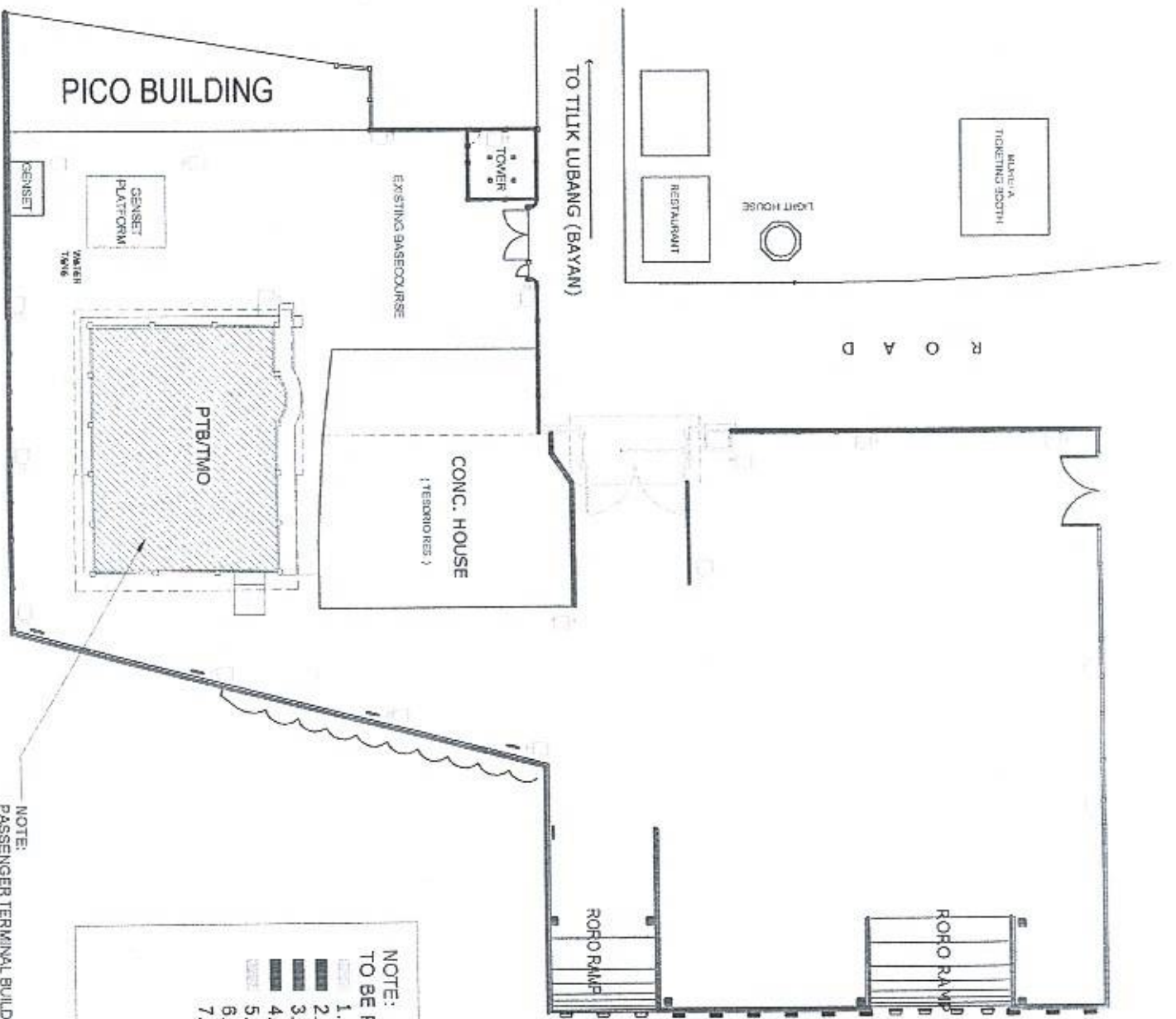


PHILIPPINE
PORTS
AUTHORITY
PMO- MINDORO



VARIOUS REPAIR AND REPAINTING WORKS

PORT OF LUBANG, OCCIDENTAL MINDORO



PORT OF LUBANG
OCCIDENTAL MINDORO
SCALE 1:500 M.

NOTE:
PASSENGER TERMINAL BUILDING
TO BE REPAINTED

- NOTE:
TO BE REPAINTED (see details)
1. SINGLE ARM STEEL POST
 2. MOORING BOLLARD
 3. RC. CURB
 4. PERIMETER FENCE
 5. WELCOME ARCH & GATE
 6. STEEL GATE
 7. PASSENGER TERMINAL BUILDING

PROJECT TITLE:

VARIOUS REPAIR AND REPAINTING WORKS
PORT OF LUBANG, OCCIDENTAL MINDORO

SHEET CONTENTS:

SCALE:
AS SHOWN

PREPARED BY:

ROBERTO C. MALUBAY
Draftsman II

SUBMITTED BY:

ALVIN JAY A. SERGIO
Assistant Port Engineer

CHECKED / REVIEWED BY:

RONALD O. MATEAG
Acting Principal Engineer A

RECOMMENDING APPROVAL BY:

MARGARITO A. CHALIS
Division Manager A, ESD

APPROVED BY:

ELVIS R. MEDALLA
Port Manager A

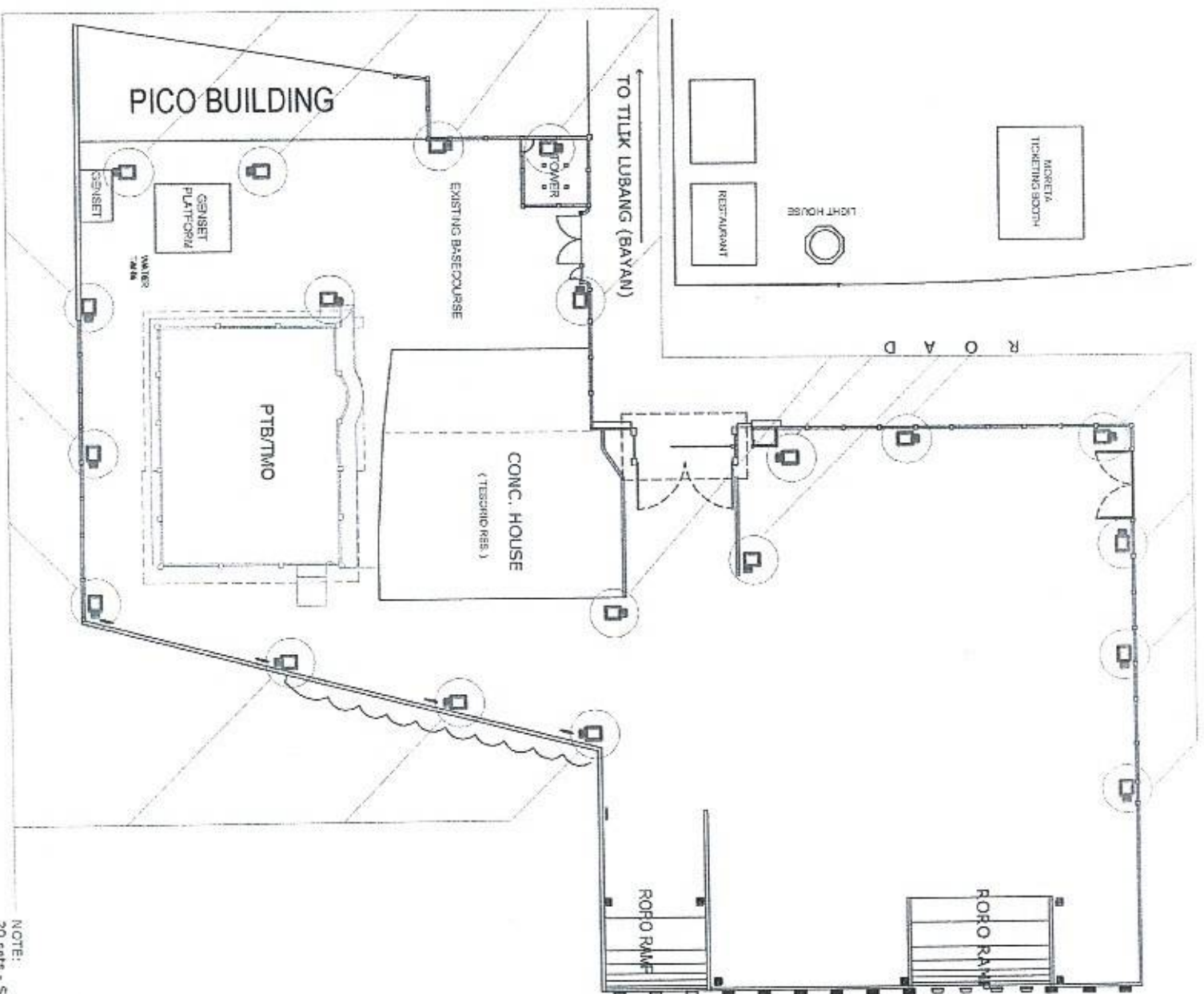
AS SHOWN

SHEET NO.
1 of 13

DATE:
25 JULY 2023



PPA-MINDORO



LOCATION PLAN OF SINGLE ARM STEEL POST

SCALE

1:1000M.

NOTE:
20 sets - SINGLE ARM STEEL POST TO BE
REPAINTED (see details)

PROJECT TITLE:

VARIOUS REPAIR AND REPAINTING WORKS
PORT OF LUBANG, OCCIDENTAL MINDORO

SHEET CONTENTS:

SCALE:
AS SHOWN

PREPARED BY:

RONEL C. MALUBAY
Draftsman II

SUBMITTED BY:

ALVIN A. SERGIO
Assistant Port Engineer

CHECKED / REVIEWED BY:

RONALD O. MATIBAG
Acting Principal Engineer A

RECOMMENDING APPROVAL BY:

MARGARITO P. DIMAILIG
Division Manager A, ESD

APPROVED BY:

ELVIS R. MEDALLA
Port Manager A

AS SHOWN

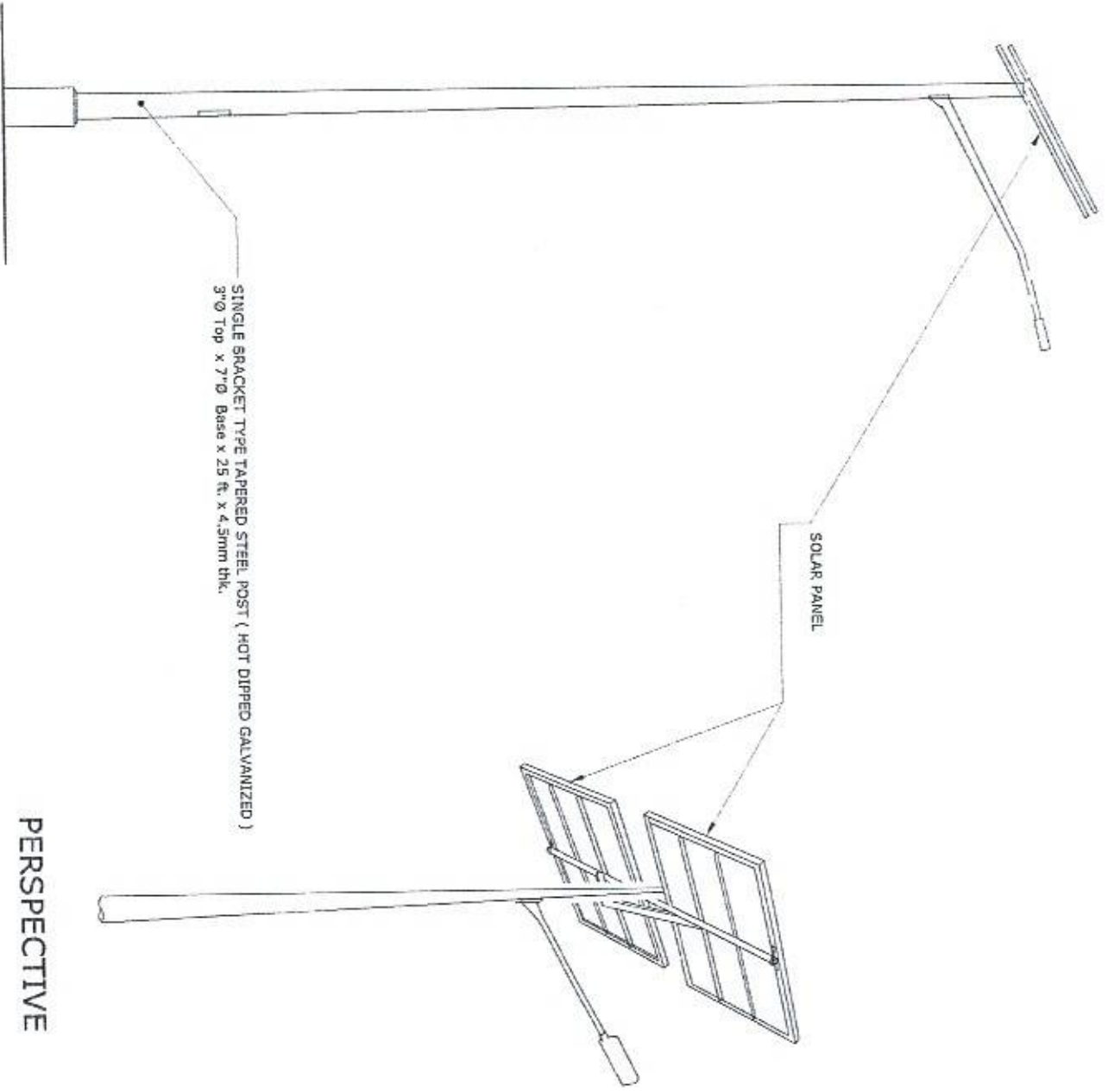
SHEET NO.
2 of 13

DATE:

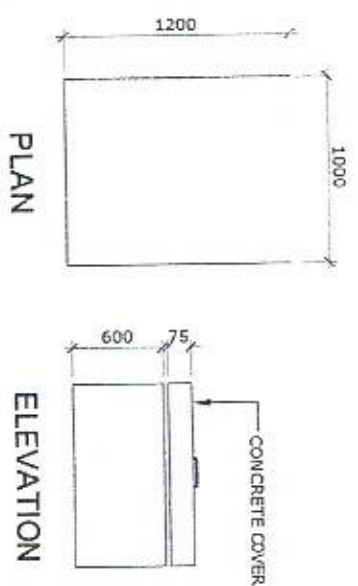
25 JULY 2023

PHILIPPINE
PORTS
AUTHORITY
PMO - MINDORO





PERSPECTIVE



TYPICAL DETAIL OF
CONCRETE BATTERY CASING
SCALE 1:50 M

NOTE:
SINGLE ARM STEEL POST & BATTERY CASING
*REPAINTING WORKS ON STEEL
1. SURFACE PREPARATION
2. USE RUST CONVERTER
3. USE AUTOMOTIVE PAINT
*REPAINTING WORKS ON
CONC. BATTERY CASING & PEDESTAL
(BLACK & YELLOW STRIPE)
1. SURFACE PREPARATION
2. USE REFLECTORIZED PAINT

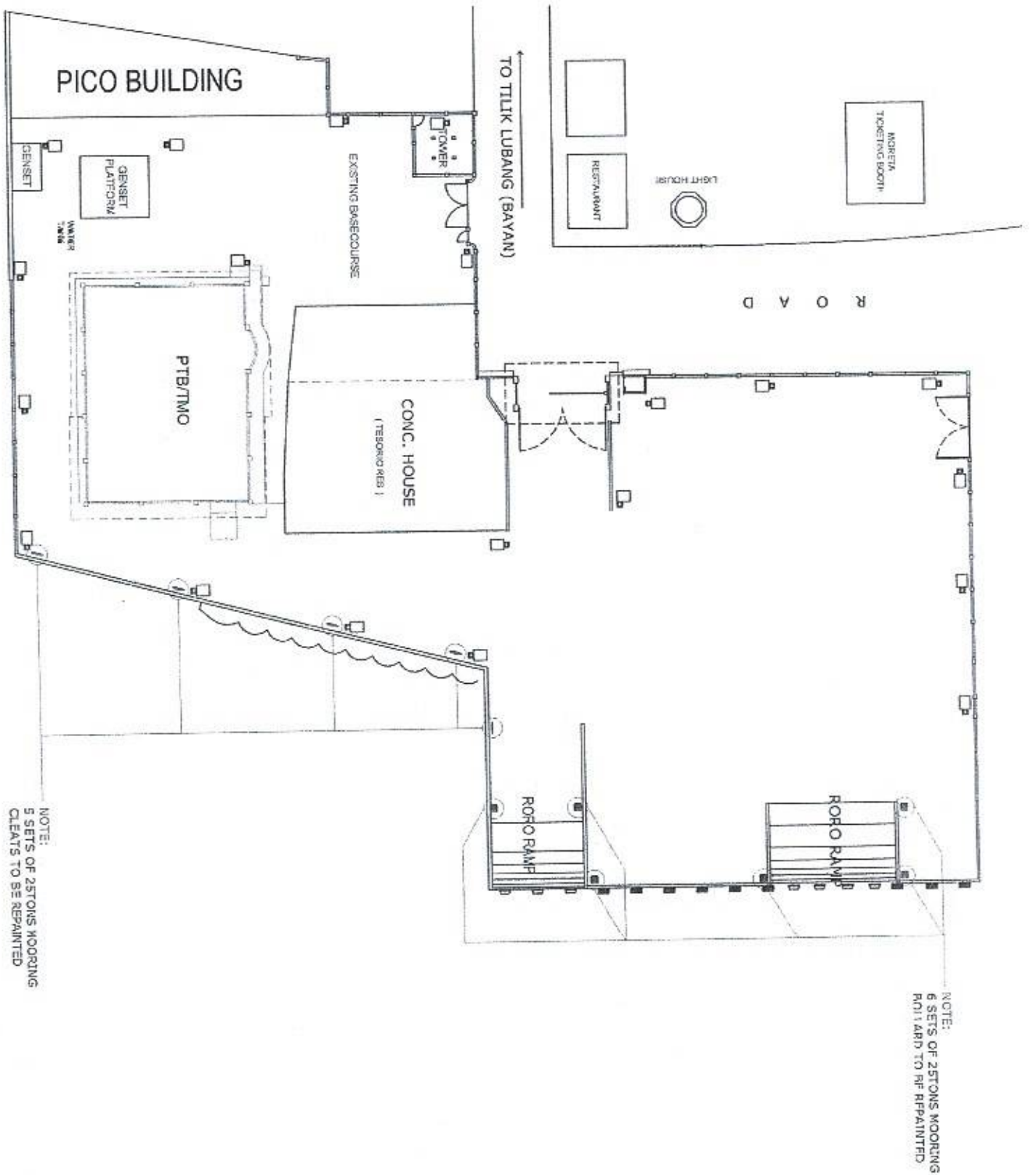
DETAIL OF SINGLE
ARM STEEL POST
SCALE KTS

PROJECT TITLE: VARIOUS REPAIR AND REPAINTING WORKS
PORT OF LUBANG, OCCIDENTAL MINDORO

SHEET CONTENTS: AS SHOWN
SCALE: AS SHOWN

| | | | | | | |
|--|---|---|---|--|----------------------|------------------------|
| PREPARED BY: ROMEL C. MALUBAY Draftsman II | SUBMITTED BY: ALVIN JAY ASERGIO Assistant Port Engineer | CHECKED / REVIEWED BY: RONALDO O. MATIBAG Acting Principal Engineer A | RECOMMENDING APPROVAL BY: MARGARITO P. DIMAUG Division Manager X, ESD | APPROVED BY: ELVIS R. MEDALLA Port Manager A | SHEET NO. 3 of 13 | DATE: 25 JULY, 2023 |
|--|---|---|---|--|----------------------|------------------------|





LOCATION PLAN OF MOORING
CLEATS / BOLLARD
SCALE 1:1000M

PROJECT TITLE:

VARIOUS REPAIR AND REPAINTING WORKS
PORT OF LUBANG, OCCIDENTAL MINDORO

SHEET CONTENTS:

SCALE:
AS SHOWN

PREPARED BY:

ROMEL C. MALUBAY
Draftsman II

SUBMITTED BY:

ALVIN JAY A. SERGIO
Assistant Port Engineer

CHECKED / REVIEWED BY:

RONALDO M. TATISAG
Acting Principle Engineer A

RECOMMENDING APPROVAL BY:

MARGARITO P. DIMAILIG
Division Manager A, ESD

APPROVED BY:

ELVIS R. MEDALLA
Port Manager A

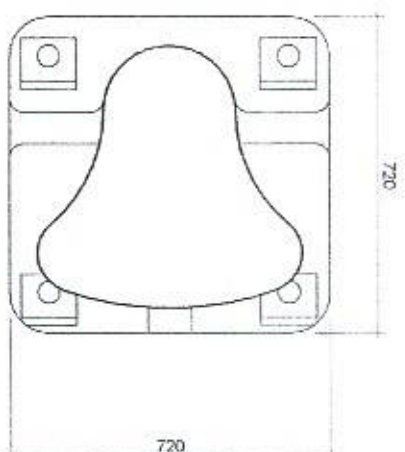
AS SHOWN

SHEET NO.
4 of 13

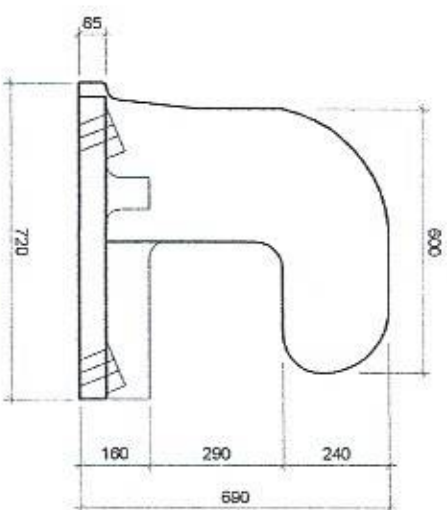
DATE:
25 JULY, 2023



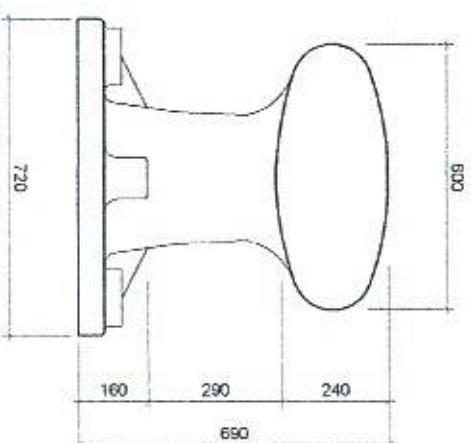
PHILIPPINE
PORTS
AUTHORITY
PMAO - MINDORO



PLAN

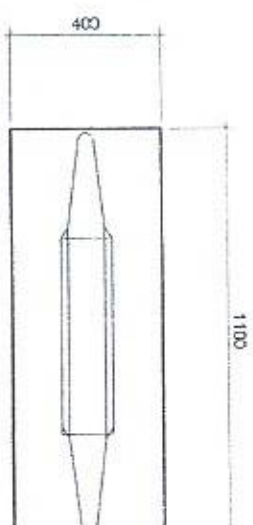


SIDE ELEVATION

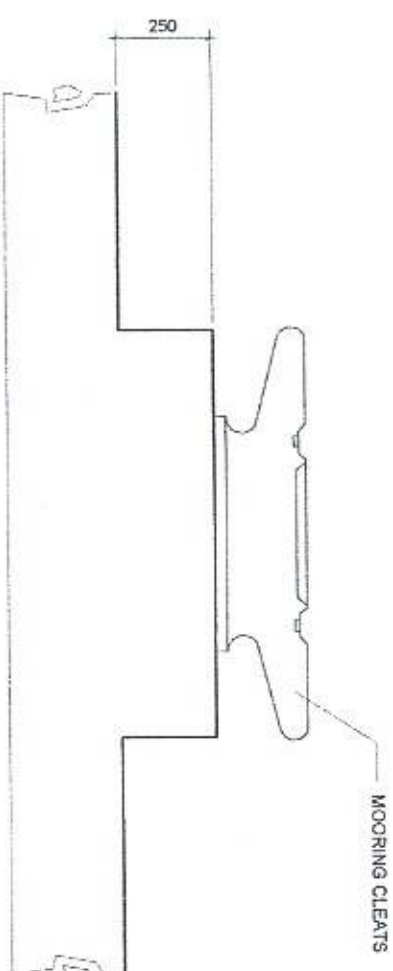


ELEVATION

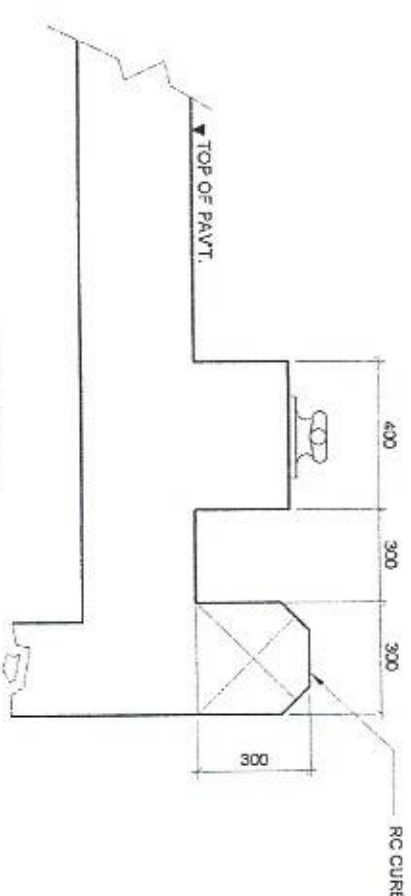
NOTE:
REPAINTING WORKS ON STEEL
1. SURFACE PREPARATION
2. USE RUST CONVERTER
3. USE AUTOMOTIVE PAINT
REPAINTING WORKS ON CONCRETE
(BLACK & YELLOW STRIPE)
1. SURFACE PREPARATION
2. USE REFLECTORIZED PAINT



PLAN



SIDE ELEVATION



ELEVATION

MOORING CLEATS DETAILS
SCALE 1:20 M.

DETAIL OF 25 TONS
MOORING BOLLARD

SCALE NTS.

PROJECT TITLE:

VARIOUS REPAIR AND REPAINTING WORKS
PORT OF LUBANG, OCCIDENTAL MINDORO

SHEET CONTENTS:

SCALE:
AS SHOWN

PREPARED BY:

ROMEL C. MALLIBAY
Draftsman II

SUBMITTED BY:

ALVIN DAY A. SERGIO
Assistant Port Engineer

CHECKED / REVIEWED BY:

RONALD O. MATIASAG
Acting Principal Engineer A

RECOMMENDING APPROVAL BY:

MARGARITO P. DIMALLIG
Division Manager A, ESO

APPROVED BY:

ELVIS R. MEDALLA
Port Manager A

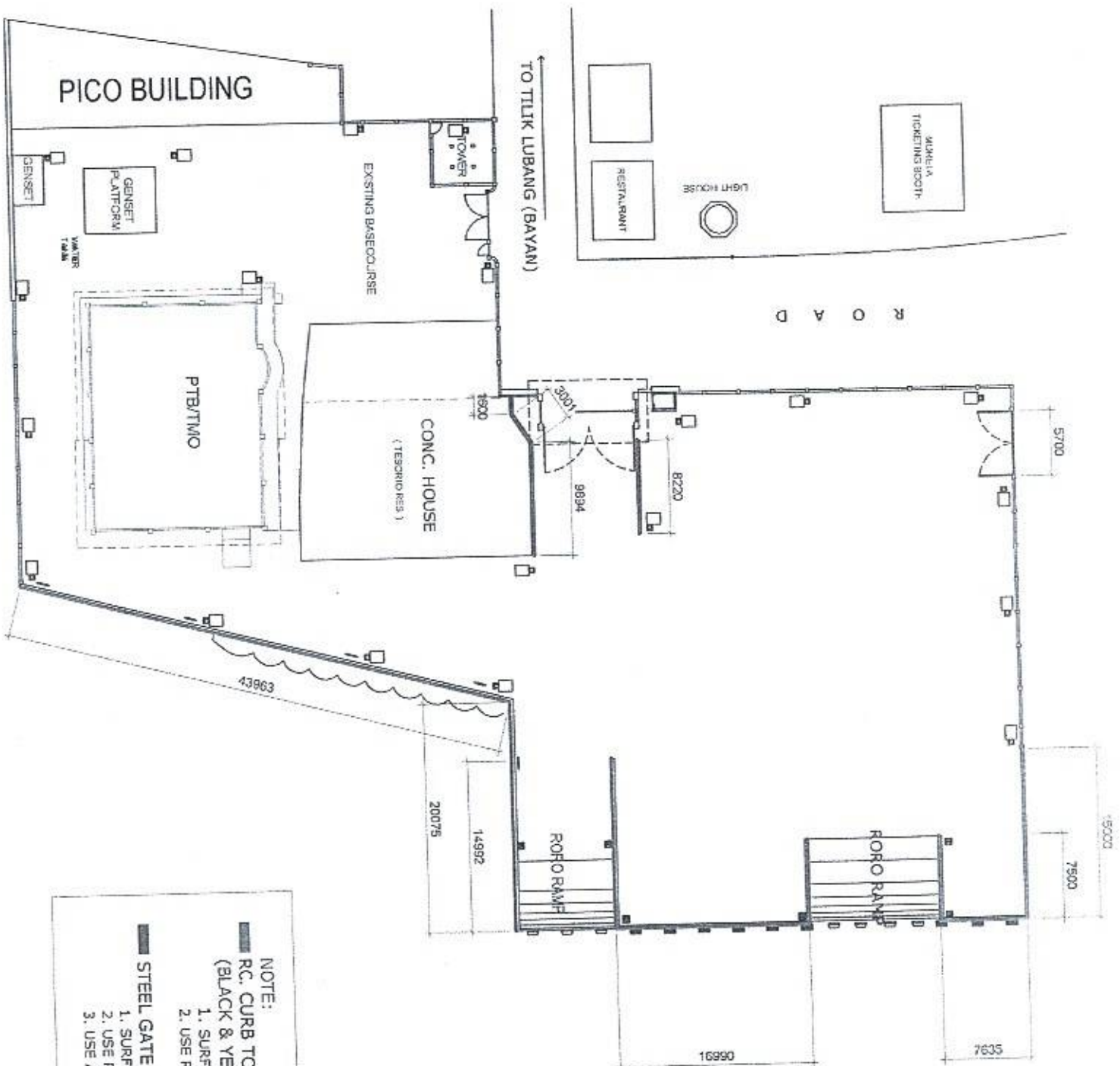
AS SHOWN

SHEET NO.
5 of 13

PHILIPPINE
PORTS
AUTHORITY
PMAO-MINDORO



DATE:
25 JULY, 2023



LOCATION PLAN OF RC CURB & STEEL FENCE

SCALE 1:1000M

PROJECT TITLE:

VARIOUS REPAIR AND REPAINTING WORKS
PORT OF LUBANG, OCCIDENTAL MINDORO

SHEET CONTENTS:

SCALE:
AS SHOWN

AS SHOWN

SHEET NO.
6 of 13

PREPARED BY:

ROMEL C. MALUBAY
Draftsman II

SUBMITTED BY:

ALVIN JAY A. SERGIO
Assistant Port Engineer

CHECKED / REVIEWED BY:

RONALD O. WATBAG
Acting Principal Engineer A

RECOMMENDING APPROVAL BY:

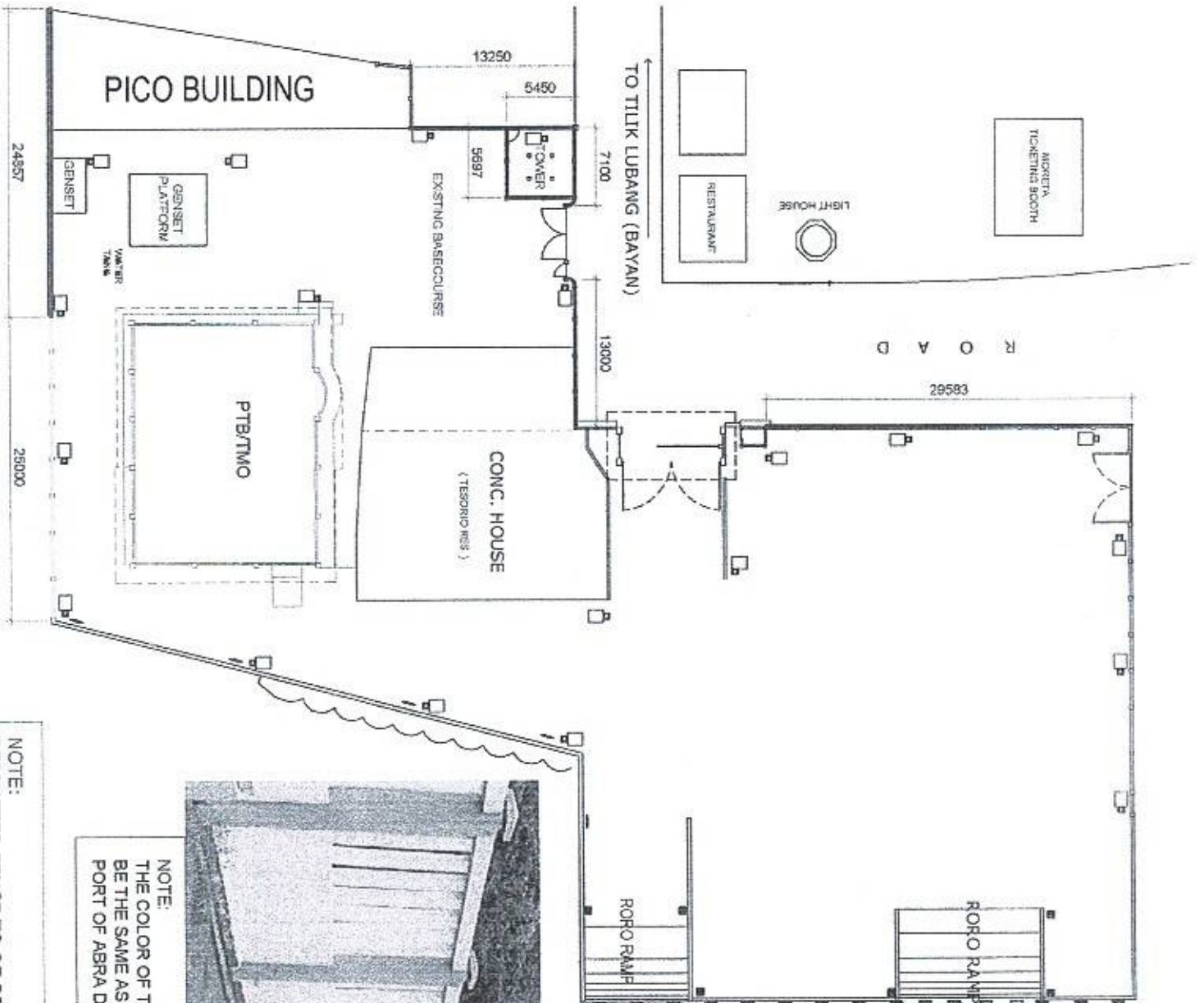
MARGARITO P. DIMALLIG
Division Manager A, ESD

APPROVED BY:

ELVIS R. MEDALLA
Port Manager A

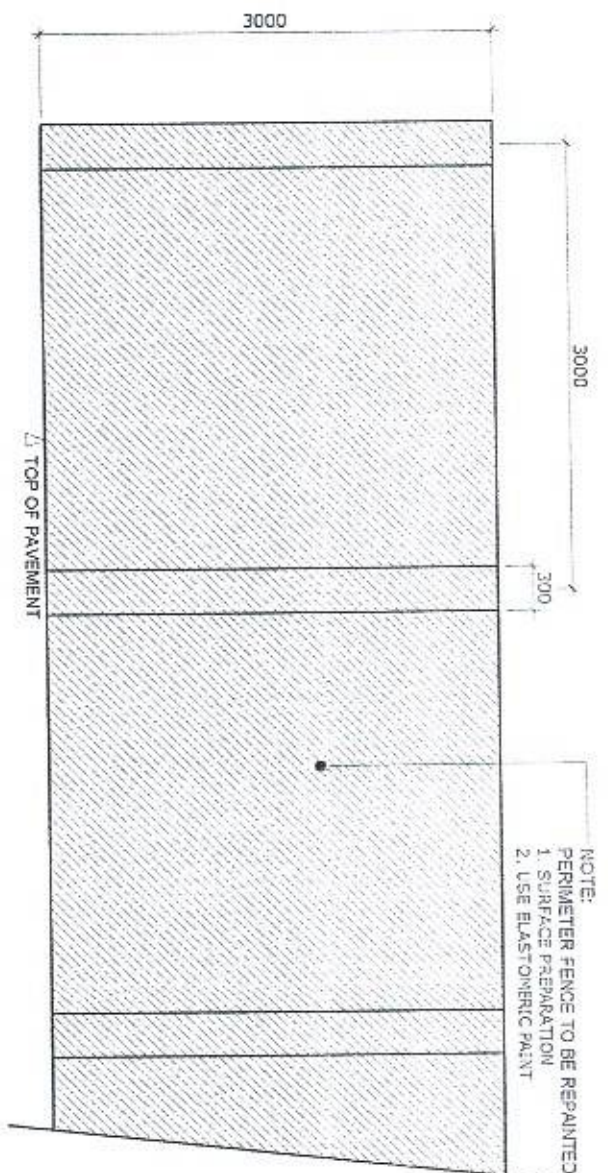
PHILIPPINE
PORTS
AUTHORITY
P.M.O. MINDORO

DATE:
25 JULY 2023

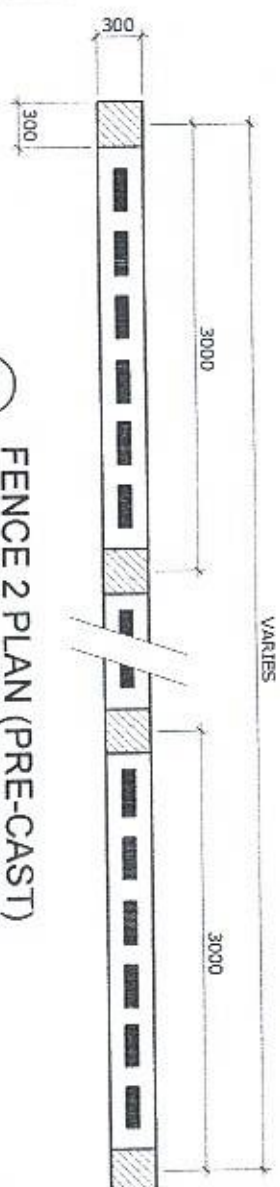


NOTE:
THE COLOR OF THE FENCE SHOULD
BE THE SAME AS THE FENCE IN THE
PORT OF ABRA DE ILOG

NOTE:
PERIMETER FENCE TO BE REPAINTED
1. SURFACE PREPARATION
2. USE ELASTOMERIC PAINT
- PERIMETER FENCE 1
- ONE SIDE ONLY (INSIDE PORT PREMISES)
- PERIMETER FENCE 2
- BOTH SIDES
- ONE SIDE ONLY (INSIDE PORT PREMISES)



NOTE:
PERIMETER FENCE TO BE REPAINTED
1. SURFACE PREPARATION
2. USE ELASTOMERIC PAINT

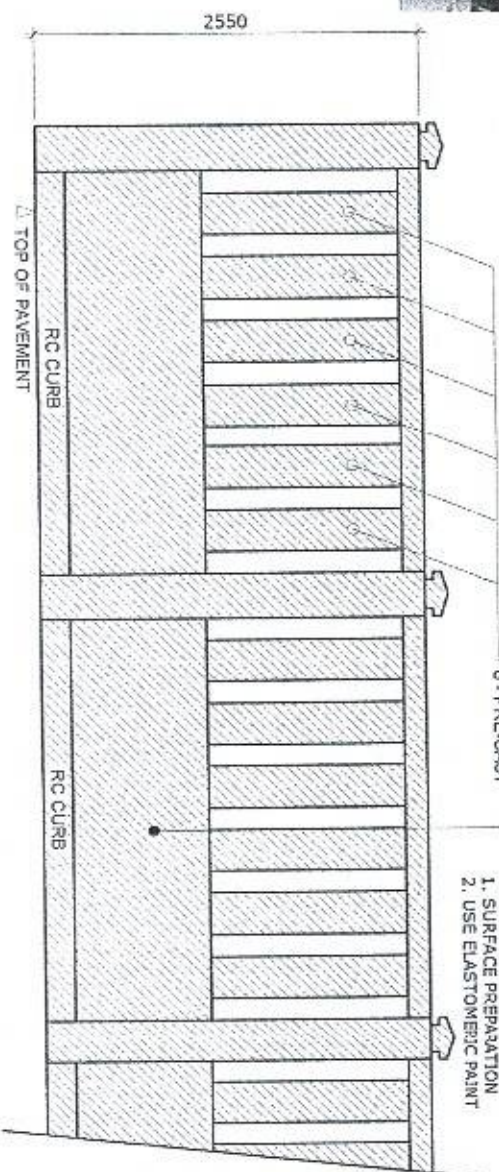


FENCE 2 PLAN (PRE-CAST)

SCALE

1:50 M.

NOTE:
PERIMETER FENCE TO BE REPAINTED
1. SURFACE PREPARATION
2. USE ELASTOMERIC PAINT



FENCE 2 ELEV. (PRE-CAST)

SCALE

1:50 M.

PROJECT TITLE:

VARIOUS REPAIR AND REPAINTING WORKS
PORT OF LUBANG, OCCIDENTAL MINDORO

SHEET CONTENTS:

SCALE:
AS SHOWN

PREPARED BY:

ROMEL C. MALIBAY
Draftsman II

SUBMITTED BY:

ALVIN JAY A. SERGIO
Assistant Port Engineer

CHECKED / REVIEWED BY:

RONALDO O. MATIBAG
Acting Principle Engineer A

RECOMMENDING APPROVAL BY:

MARGARITO DIMALIG
Division Manager A, ESD

APPROVED BY:

ELVIS R. MEDALLA
Port Manager A

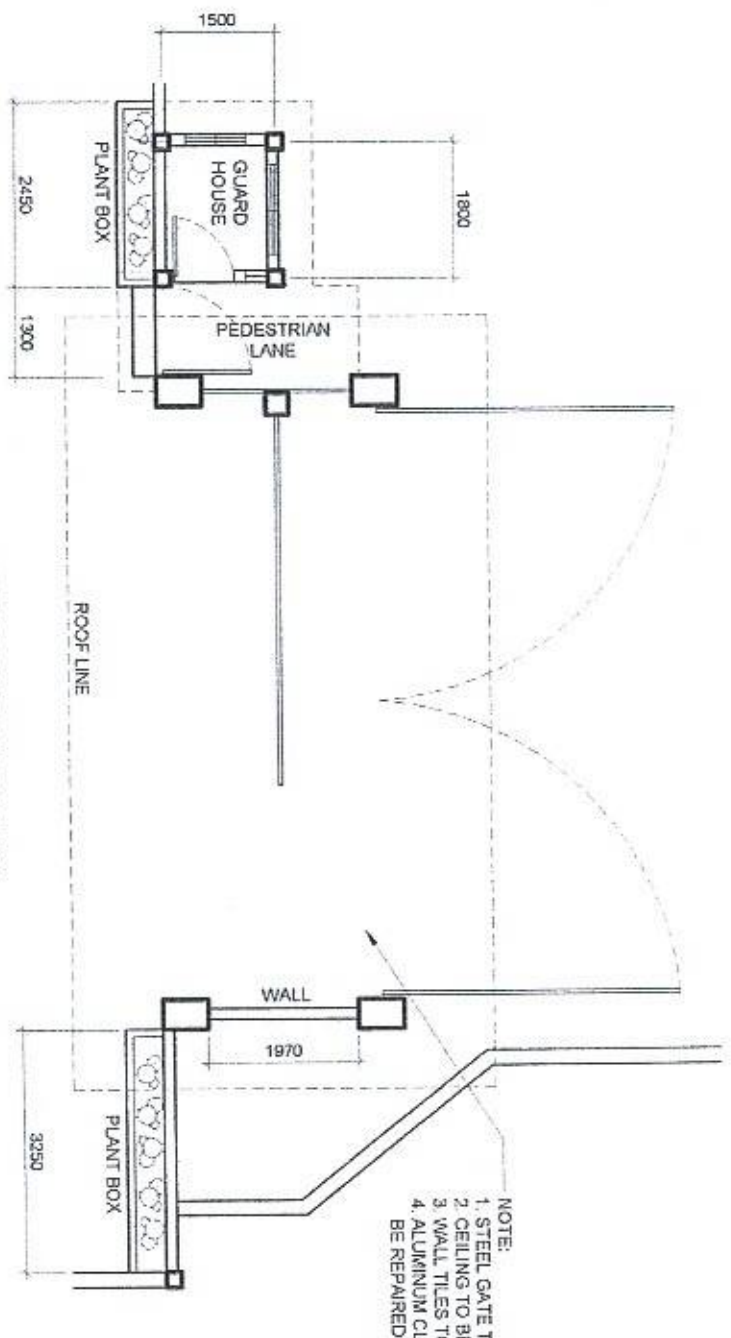
AS SHOWN

SHEET NO.
7 of 13

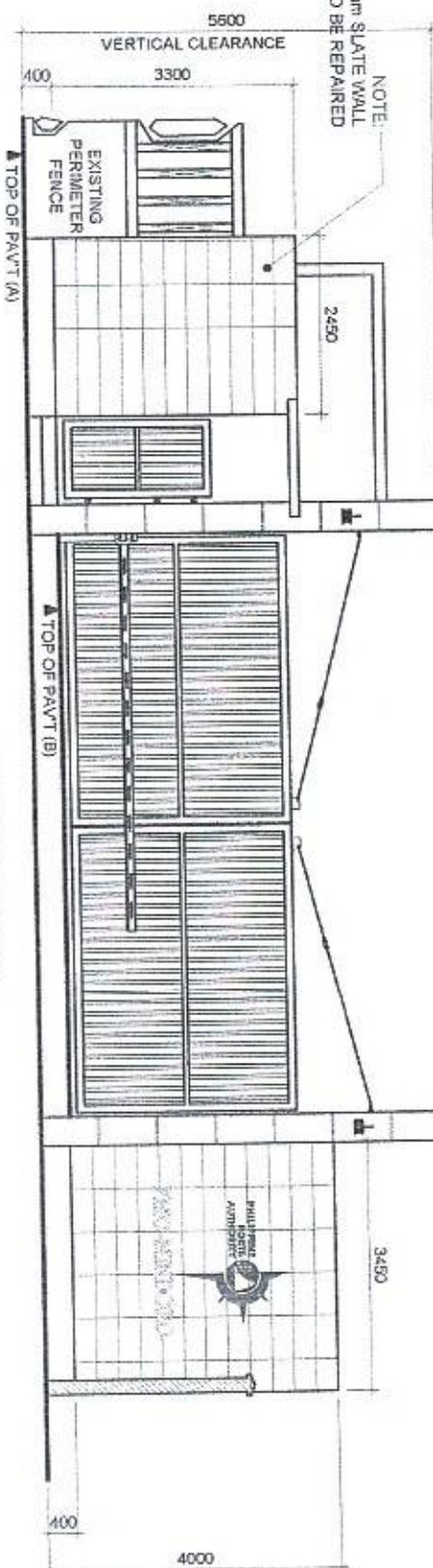
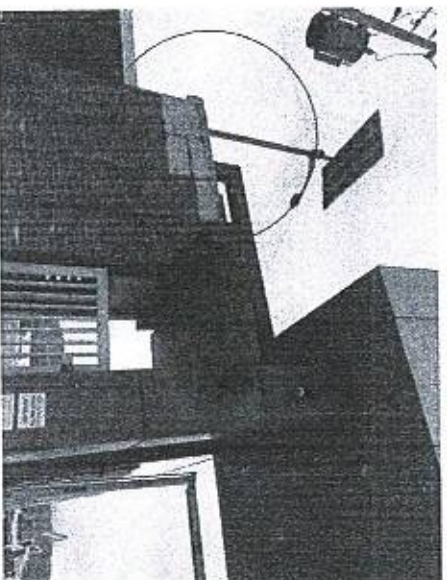


PPA - MINDORO

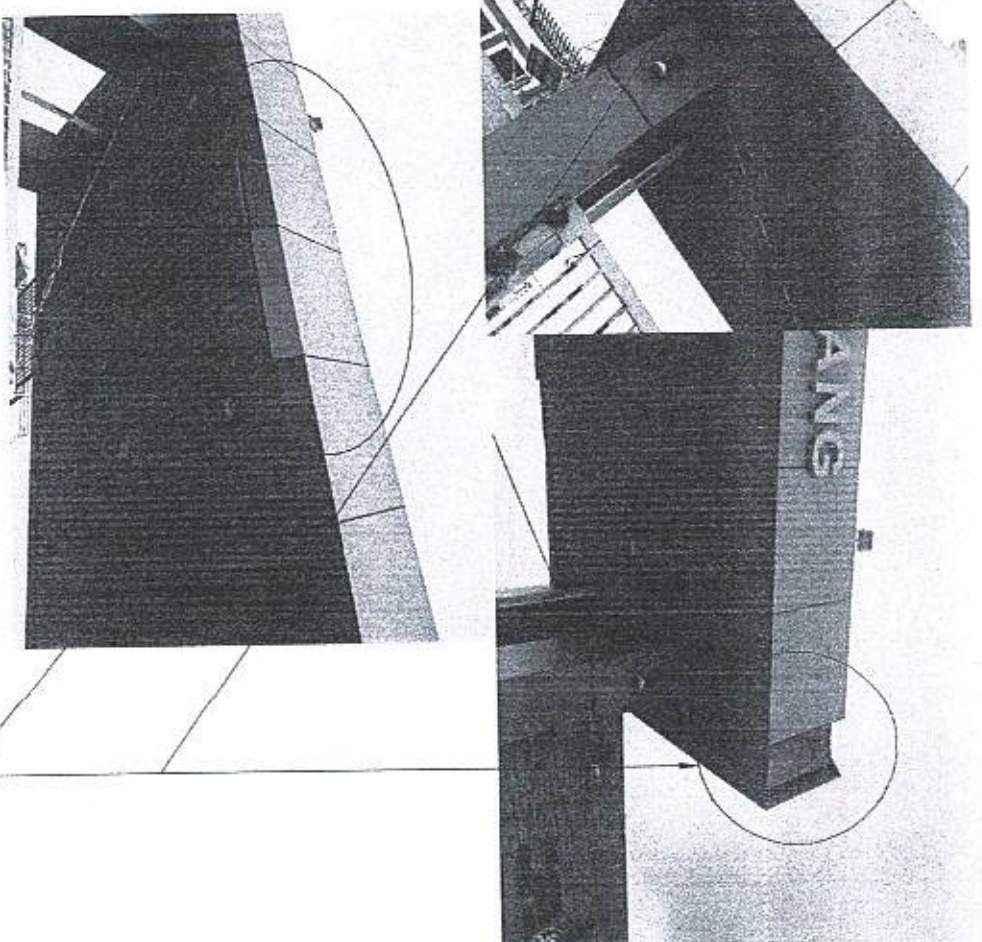
DATE:
25 JULY, 2023



WELCOME ARCH &
GATES PLAN
SCALE 1:100 M



FRONT ELEVATION
SCALE 1:100 M



PROJECT TITLE:

VARIOUS REPAIR AND REPAINTING WORKS
PORT OF LUBANG, OCCIDENTAL MINDORO

SHEET CONTENTS:

SCALE:
AS SHOWN

PREPARED BY:

ROMEL C. MALUBAY
Draftsman II

SUBMITTED BY:

ALVIN JAY A. SERGIO
Assistant Port Engineer

CHECKED / REVIEWED BY:

RONALD O. MATIBAG
Acting Principal Engineer A

RECOMMENDING APPROVAL BY:

MARGARITO DELA LLIGA
Division Manager A, ESD

APPROVED BY:

ELVIS R. MEDALLA
Per Manager A

AS SHOWN

SHEET NO.
8 of 13

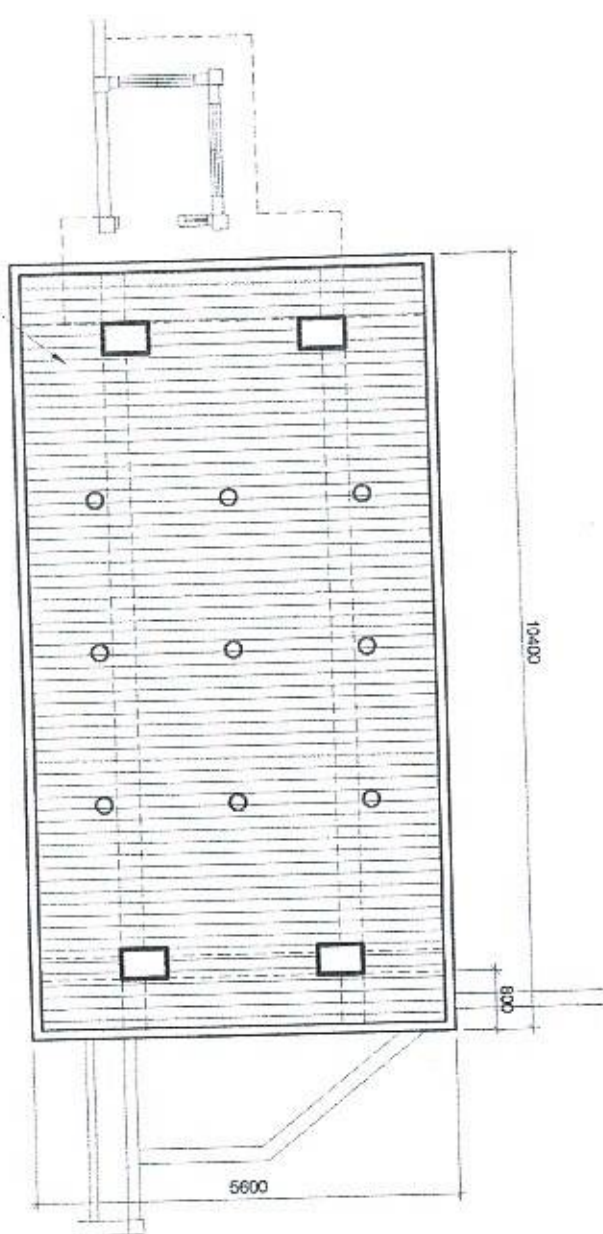
DATE:
26 JULY, 2023



PHILIPPINE
PORTS
AUTHORITY
PMO - MINDORO



NOTE
TO BE REPLACED BY
METAL SPANDREL 0.5mm x 150mm



ROMEL C. MALIBAY

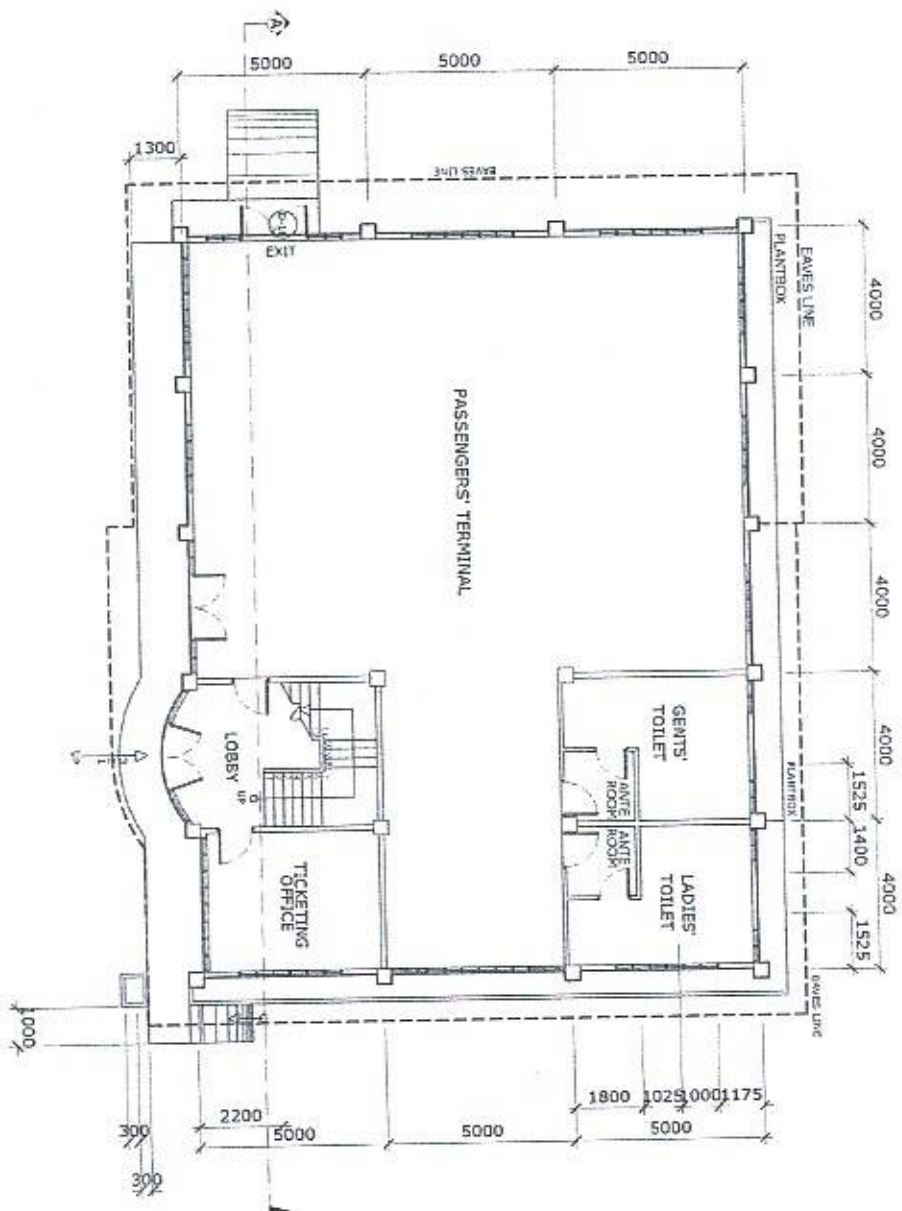
ALVARO A. SERGIO

RONALD O. MATIAS
Acting Principal Engineer A

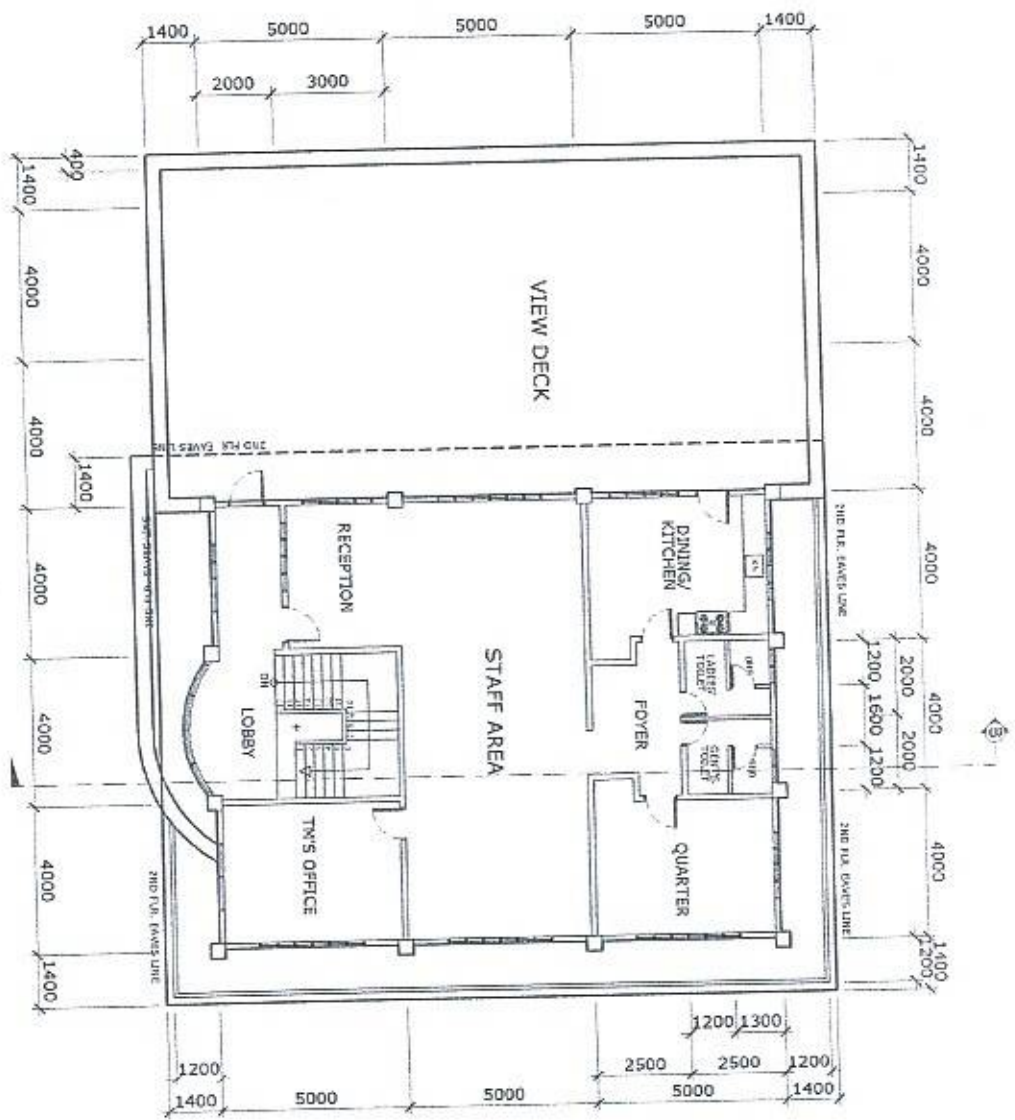
MARGARITO P. DIMALLIG
Division Manager A, ESD

ELVIS R. MEDALL
Port Manager A

25 JULY, 2023



PTB GROUND FLOOR PLAN
SCALE 1:200 M



PTB SECOND FLOOR PLAN
SCALE 1:200 M

NOTE:
1. EXTERIOR WALL OF PASSENGER TERMINAL BUILDING TO BE REPAINTED INCLUDING PARAPET WALL
2. SURFACE PREPARATION
3. USE ELASTOMERIC PAINT

PROJECT TITLE:

VARIOUS REPAIR AND REPAINTING WORKS
PORT OF LUBANG, OCCIDENTAL MINDORO

SHEET CONTENTS:

SCALE:
AS SHOWN

PREPARED BY:

RONEL C. MALUSAY
Draftsman II

SUBMITTED BY:

ALVIN JAY A. SERGIO
Assistant Port Engineer

CHECKED / REVIEWED BY:

RONALD O. MATEAG
Acting Principle Engineer A

RECOMMENDING APPROVAL BY:

MARGARITO P. CHANILIG
Division Manager ESD

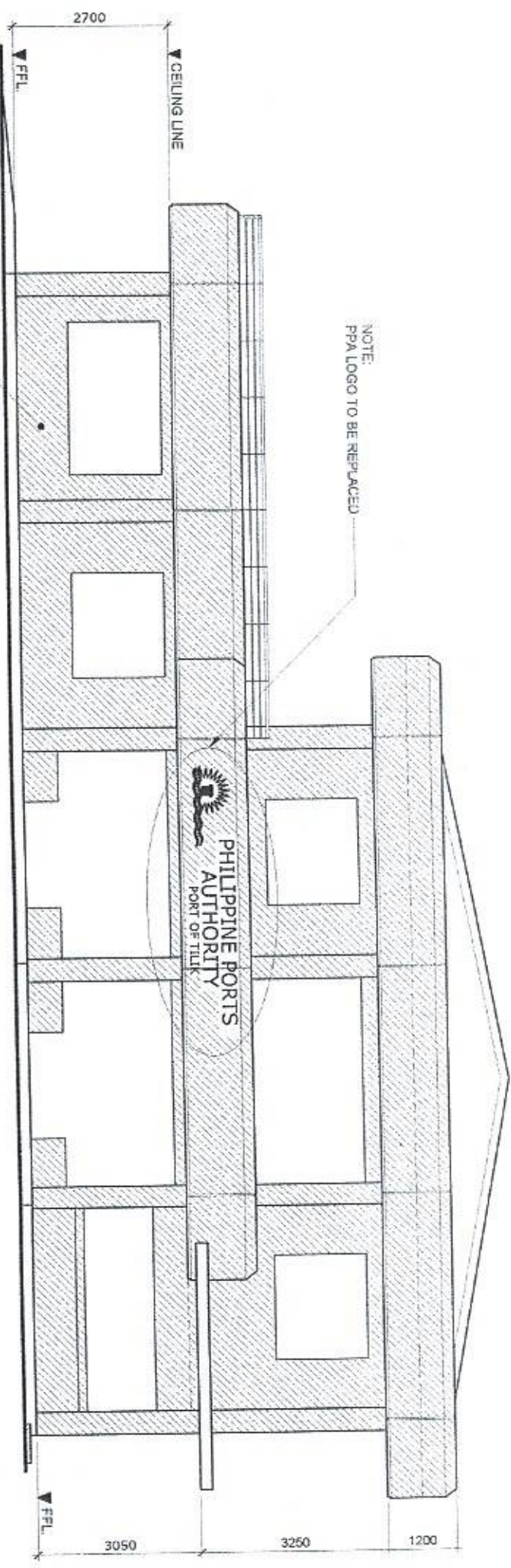
APPROVED BY:

ELVIS R. MEDALLA
Port Manager A



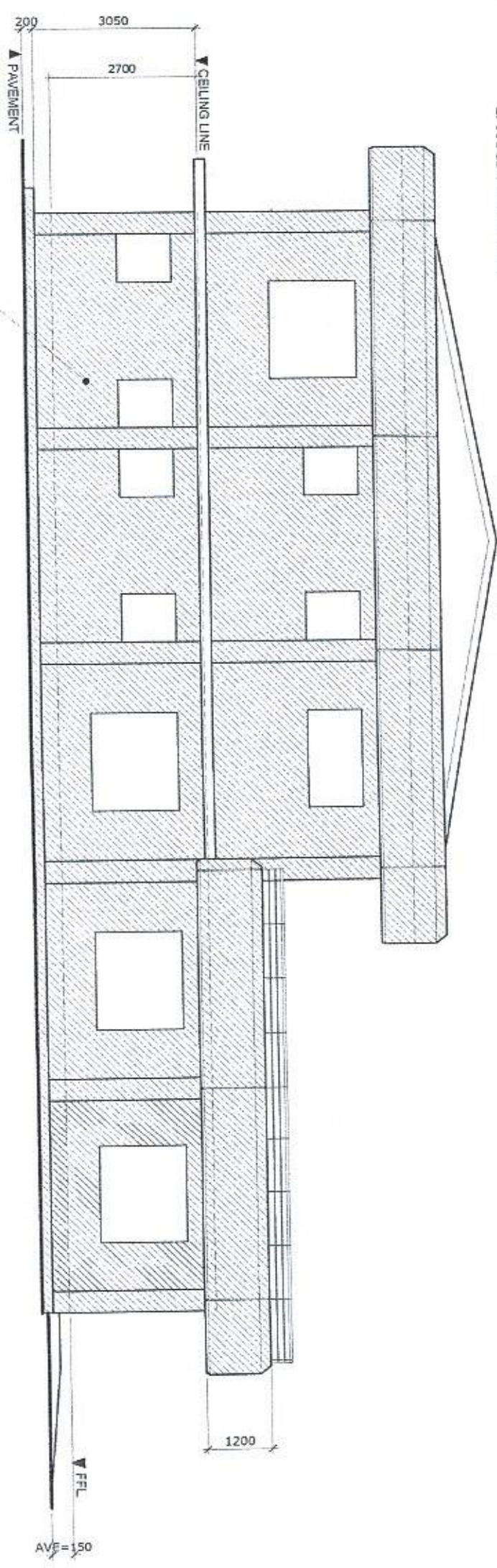
AS SHOWN

SHEET NO.
10 of 13
DATE:
26 JULY, 2023



NOTE:
PERIMETER FENCE TO BE REPAINTED
1. SURFACE PREPARATION
2. USE ELASTOMERIC PAINT

PTB FRONT ELEVATION
SCALE 1:100 M



NOTE:
PERIMETER FENCE TO BE REPAINTED
1. SURFACE PREPARATION
2. USE ELASTOMERIC PAINT

PTB REAR ELEVATION
SCALE 1:100 M

PROJECT TITLE: VARIOUS REPAIR AND REPAINTING WORKS
PORT OF LUBANG, OCCIDENTAL MINDORO

SHEET CONTENTS: AS SHOWN
SCALE: AS SHOWN

PREPARED BY:

RONEL C. MALLUEAY
Draftsman II

SUBMITTED BY:

ALVIN JAY A. SERGIO
Assistant Port Engineer

CHECKED / REVIEWED BY:

RONALD O. MATEBAG
Acting Principal Engineer A

RECOMMENDING APPROVAL BY:

MARGARITO P. DIMALIG
Division Manager A, ESD

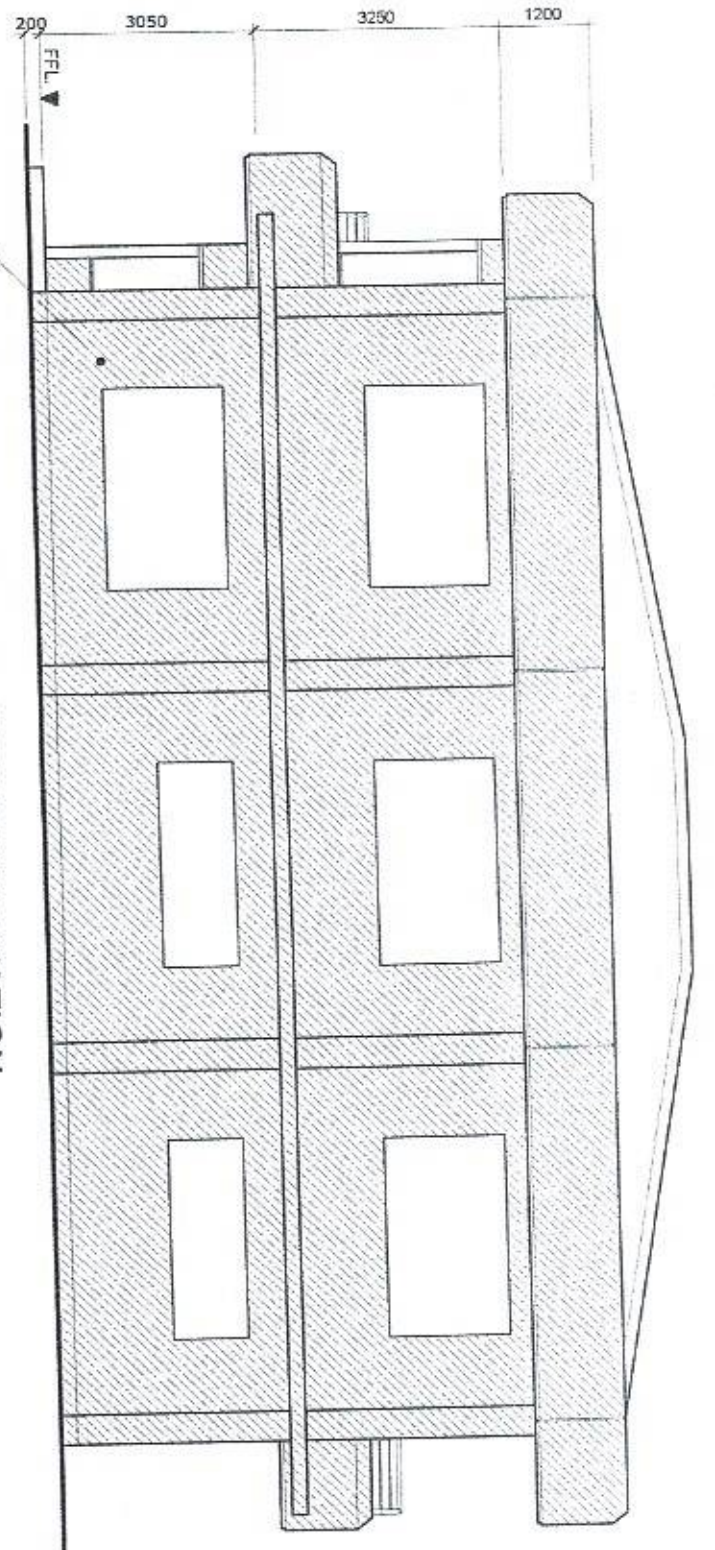
APPROVED BY:

ELVIS A. MEDALLA
Port Manager A



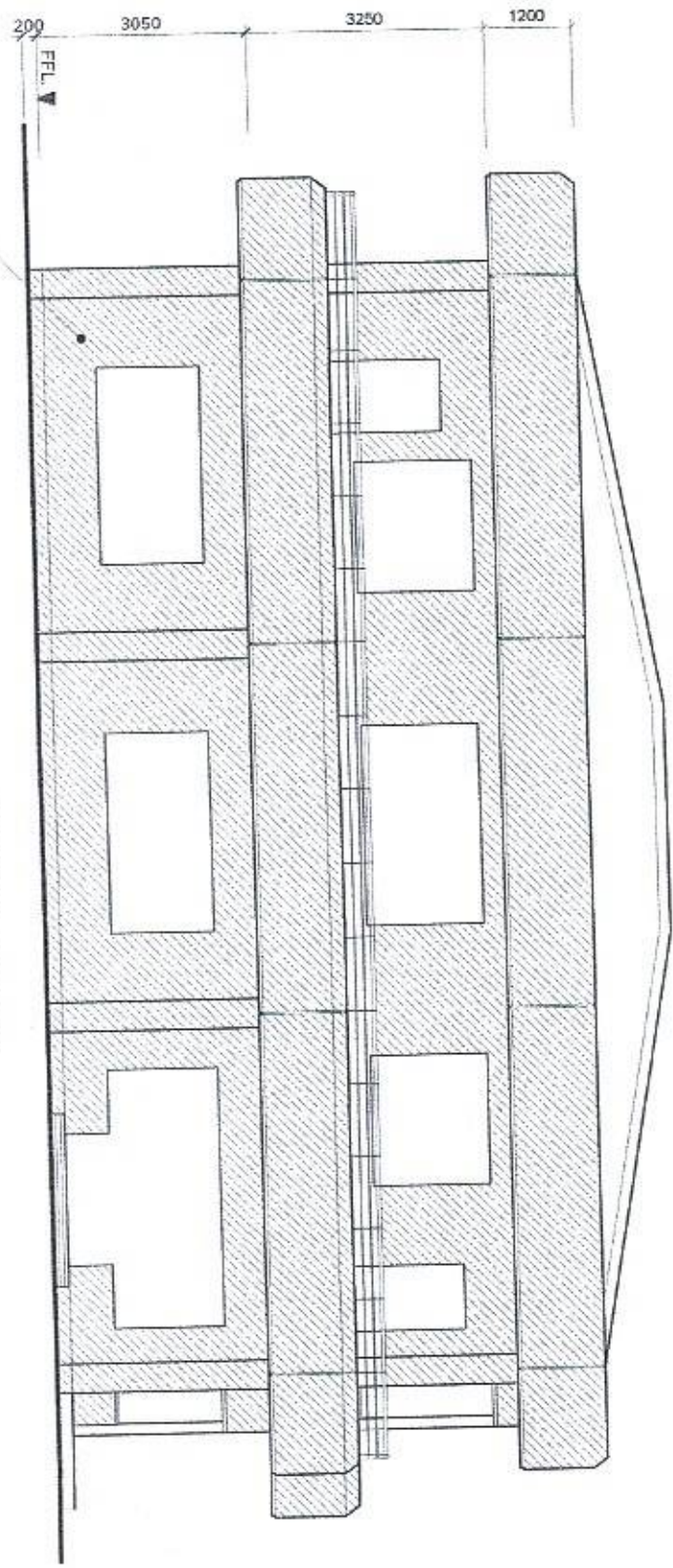
PORT OF LUBANG
PORT OF LUBANG
PORT OF LUBANG

DATE: 25 JULY 2023
SHEET NO. 11 of 13



NOTE:
PERIMETER FENCE TO BE REPAINTED
1. SURFACE PREPARATION
2. USE ELASTOMERIC PAINT

PTB RIGHT ELEVATION
SCALE 1:100 M



NOTE:
PERIMETER FENCE TO BE REPAINTED
1. SURFACE PREPARATION
2. USE ELASTOMERIC PAINT

PTB LEFT ELEVATION
SCALE 1:100 M

PROJECT TITLE:

VARIOUS REPAIR AND REPAINTING WORKS
PORT OF LUBANG, OCCIDENTAL MINDORO

SHEET CONTENTS:

SCALE:
AS SHOWN

PREPARED BY:

RONIEL C. MALUSAY
Draftsman II

SUBMITTED BY:

ALVIN MAY A. SERGIO
Assistant Port Engineer

CHECKED / REVIEWED BY:

RONALD O. MATIBAG
Acting Principal Engineer A

RECOMMENDING APPROVAL BY:

MARGARITO P. DINMALLIG
Division Manager A, ESO

APPROVED BY:

ELVIS R. MEDALLA
Port Manager A

AS SHOWN

SHEET NO.
12 of 13

DATE:
25 JULY, 2023





PORT OF LUBANG

DETAIL OF STAINLESS STEEL PLATE
SCALE 1:50 M

| | | | | | |
|---|---|--|--|--|---|
| PROJECT TITLE: VARIOUS REPAIR AND REPAINTING WORKS PORT OF LUBANG, OCCIDENTAL MINDORO | | SHEET CONTENTS: AS SHOWN | | SCALE: AS SHOWN | |
| PREPARED BY: ROMEL C. MALUBAY Draftsman II | SUBMITTED BY: ALVIN JAY A. SERGIO Assistant Port Engineer | CHECKED / REVIEWED BY: RONALD O. MATIBAG Acting Principal Engineer A | RECOMMENDING APPROVAL BY: MARGARITO P. DIMALIG Division Manager A, ESO | APPROVED BY: ELVIS R. MEDALLA Port Manager A | SHEET NO. 13 of 13 DATE: 25 JULY, 2023 |

