

LEGEND :

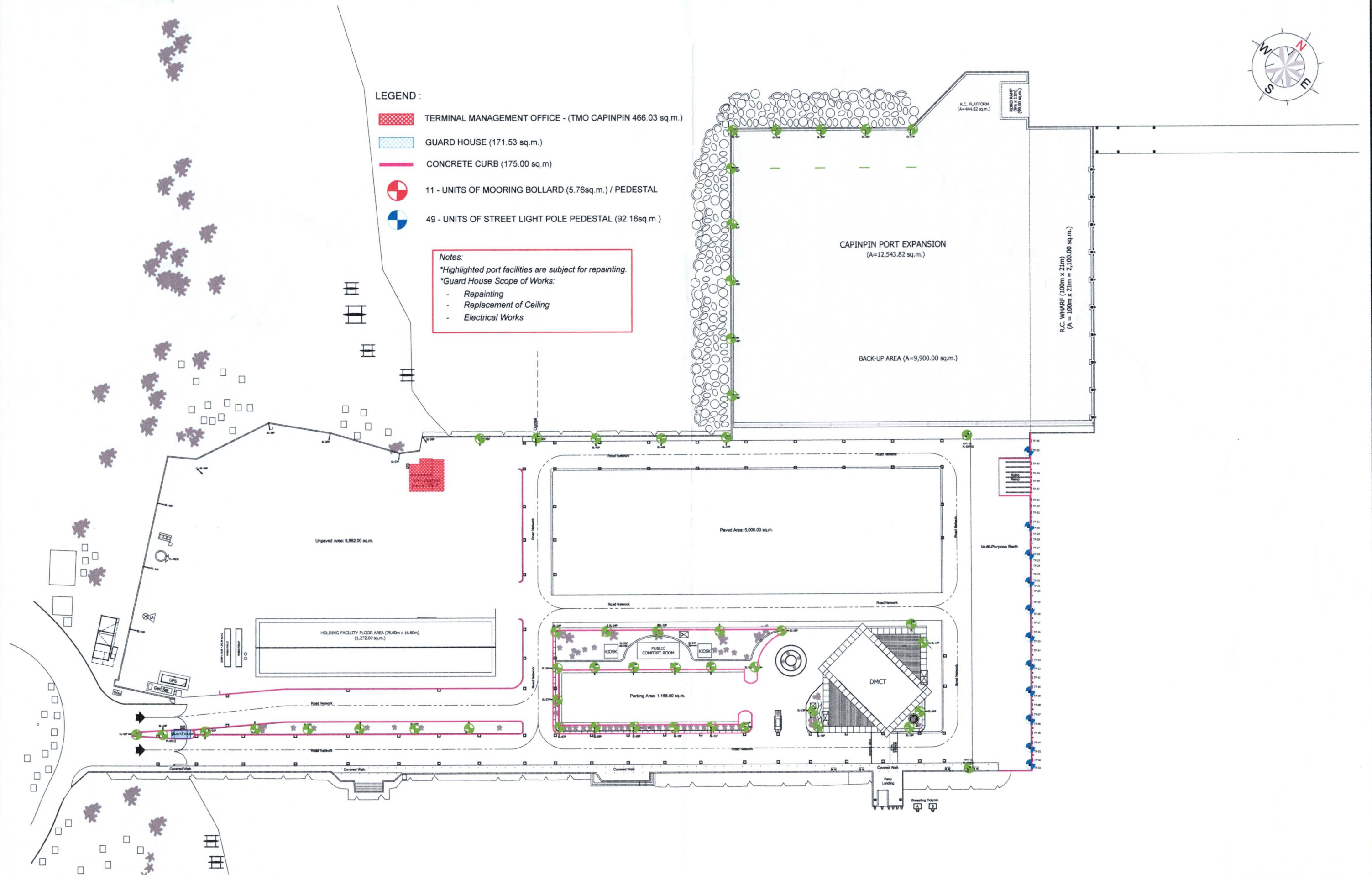
- TERMINAL MANAGEMENT OFFICE - (TMO CAPINPIN 466.03 sq.m.)
- GUARD HOUSE (171.53 sq.m.)
- CONCRETE CURB (175.00 sq.m)
- 11 - UNITS OF MOORING BOLLARD (5.76sq.m.) / PEDESTAL
- 49 - UNITS OF STREET LIGHT POLE PEDESTAL (92.16sq.m.)

Notes:

*Highlighted port facilities are subject for repainting.

*Guard House Scope of Works:

- Repainting
- Replacement of Ceiling
- Electrical Works



PORT CAPINPIN
BRGY. PUTING BUHANGIN, ORION, BATAAN

PROJECT TITLE: MAINTENANCE OF TMO, GUARD HOUSE AND CONCRETE CURB AT PORT CAPINPIN, ORION, BATAAN

DRAWN BY:
ROY R. TANAGON
ENGINEERING ASSISTANT A, PMO-BATAAN/AURORA

REVIEWED BY:
EDGARDO B. ANDAYA JR.
SUPERVISING ENGINEER A, PMO-BATAAN/AURORA

RECOMMENDING APPROVAL:
ALBERT FRANCIS T. GOLES
ACTING ESD MANAGER, PMO-BATAAN/AURORA

APPROVED BY:
JENNELIZA D. REBONG
ACTING PORT MANAGER, PMO-BATAAN/AURORA

SHEET CONTENT:

PORT CAPINPIN DEVELOPMENT PLAN

DATE: NOVEMBER, 2023

DIMENSION: M

SHEET No. 1 of 1