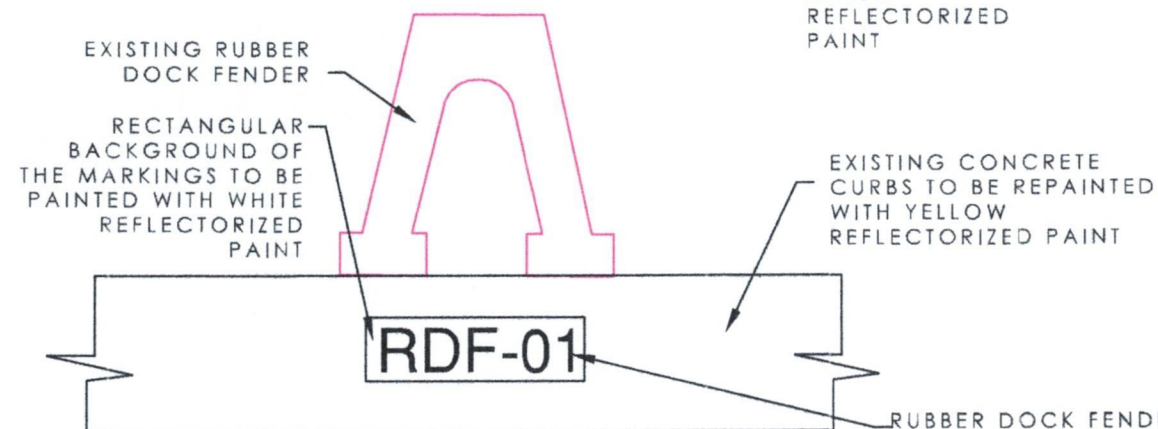


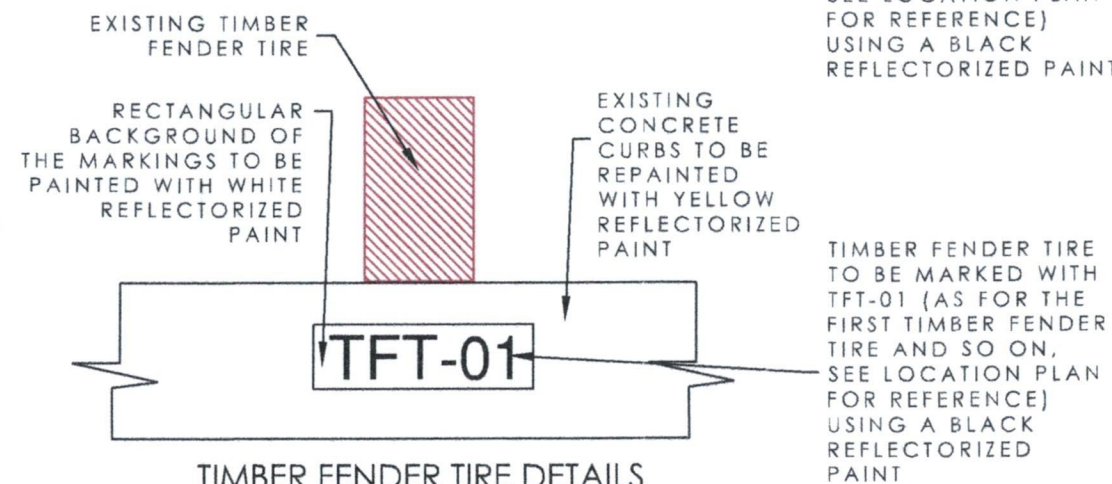
MOORING BOLLARD DETAILS

MOORING BOLLARDS TO BE MARKED WITH MB-01 (AS FOR THE FIRST MOORING BOLLARD AND SO ON, SEE LOCATION PLAN FOR REFERENCE) USING A BLACK REFLECTORIZED PAINT



RUBBER DOCK FENDER DETAILS

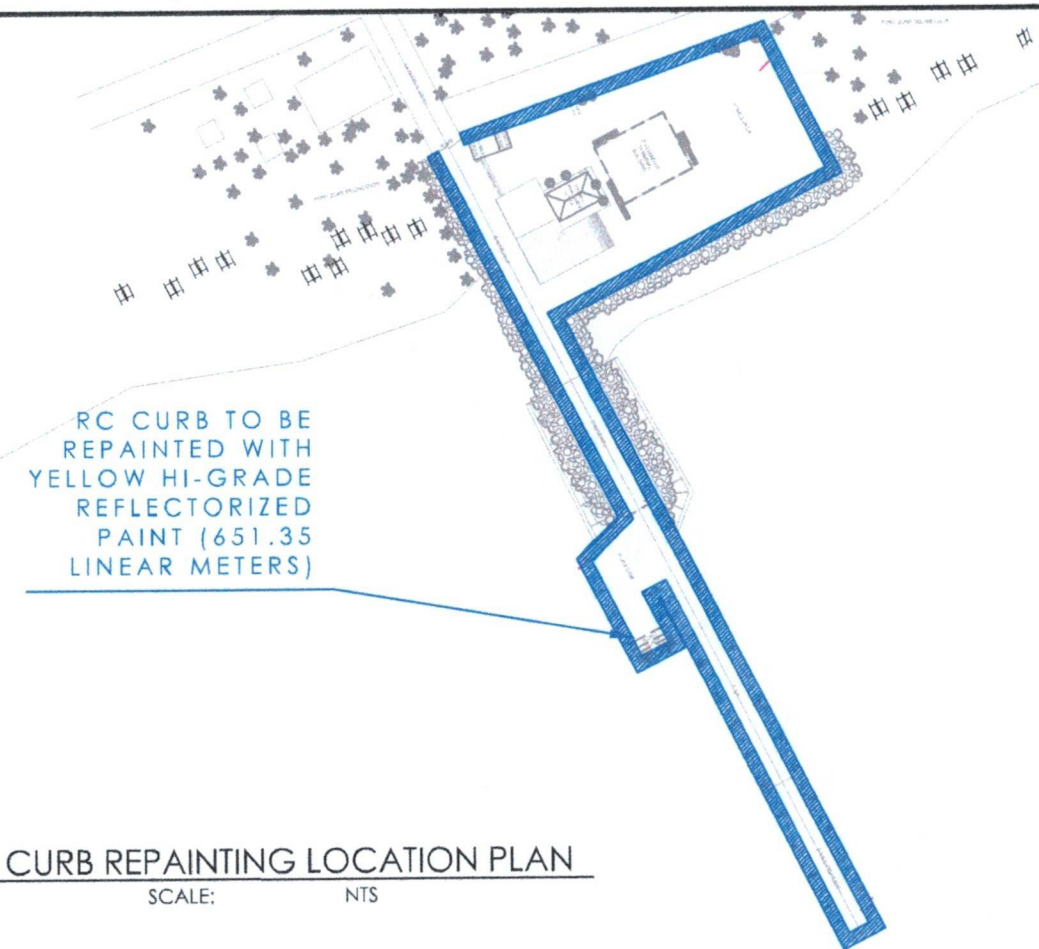
RUBBER DOCK FENDER TO BE MARKED WITH RDF-01 (AS FOR THE FIRST RUBBER DOCK FENDER AND SO ON, SEE LOCATION PLAN FOR REFERENCE) USING A BLACK REFLECTORIZED PAINT



TIMBER FENDER TIRE DETAILS

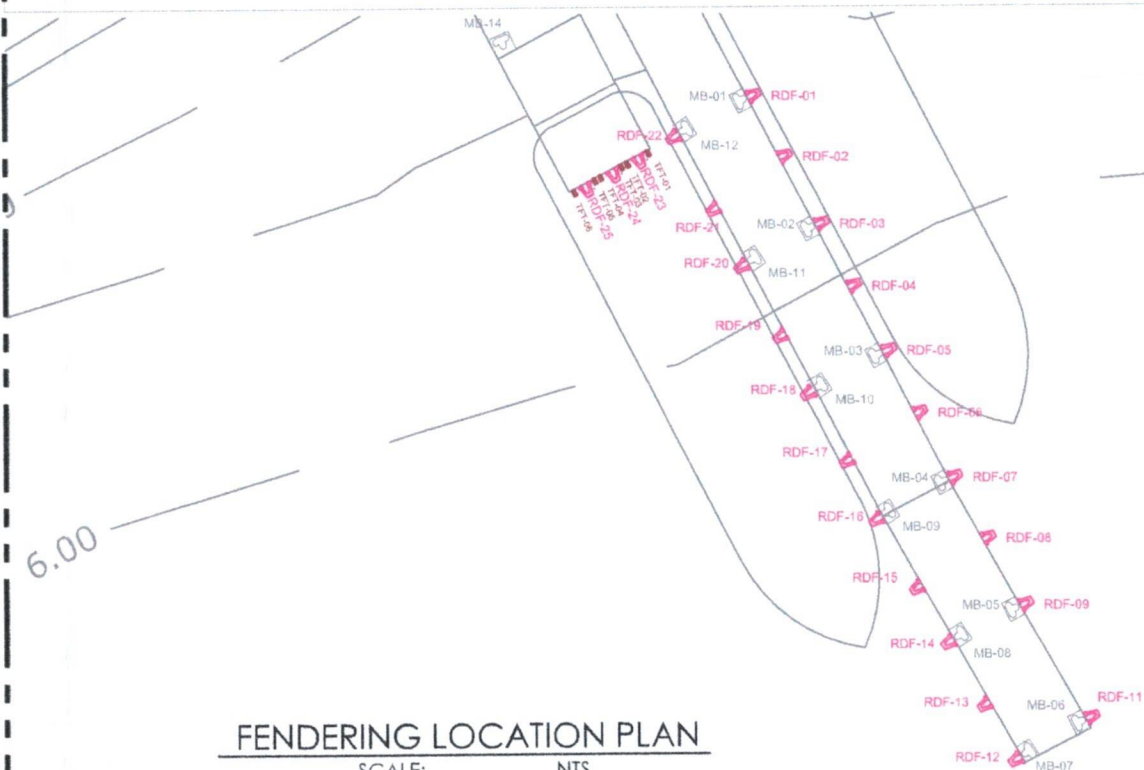
MARKING OF EXISTING PORT FACILITIES DETAILS

SCALE: NTS



RC CURB REPAINTING LOCATION PLAN

SCALE: NTS



FENDERING LOCATION PLAN

SCALE: NTS



DEVELOPMENT PLAN  
PORT OF DINGALAN  
BRGY. APLAYA, DINGALAN, AURORA PROVINCE

PROJECT TITLE:

MAINTENANCE OF CONCRETE CURB, CONCRETE AND STEEL FENCE AT PORT OF DINGALAN, AURORA

PREPARED BY:  
**KRIZZIA ANNE G. FRIAL**  
SENIOR ENGINEER A, PMO-BATAAN/AURORA

CHECKED BY:  
**EDGARDO B. ANDAYA JR.**  
SUPERVISING ENGINEER A, PMO-BATAAN/AURORA

RECOMMENDING APPROVAL:  
**ALBERT FRANCIS T. GOLES**  
ACTING ESD MANAGER, PMO-BATAAN/AURORA

APPROVED BY:  
**JENNELIZA D. REBONG**  
ACTING PORT MANAGER, PMO-BATAAN/AURORA

SHEET CONTENT:

MARKING OF EXISTING PORT FACILITIES  
DETAILS AND LOCATION PLAN

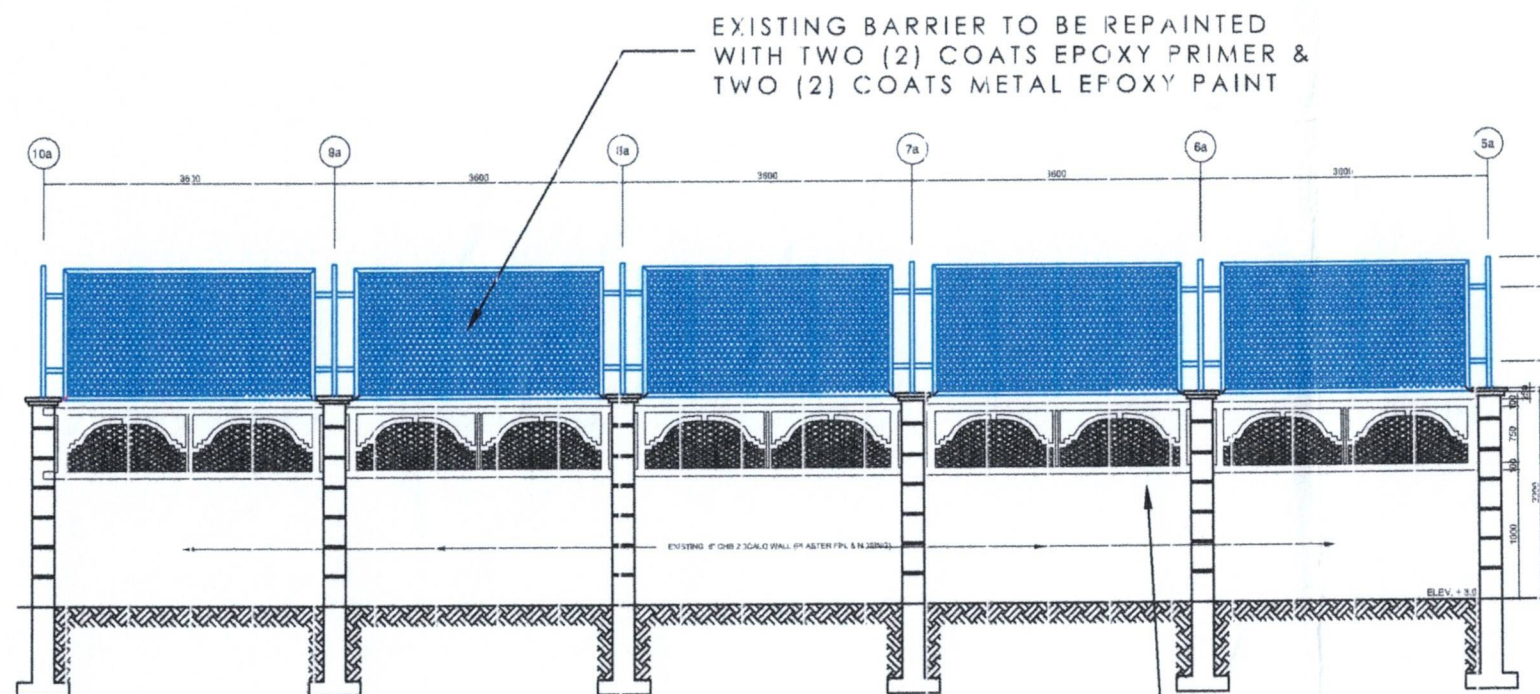
DATE:

NOVEMBER 2023

SHEET No.

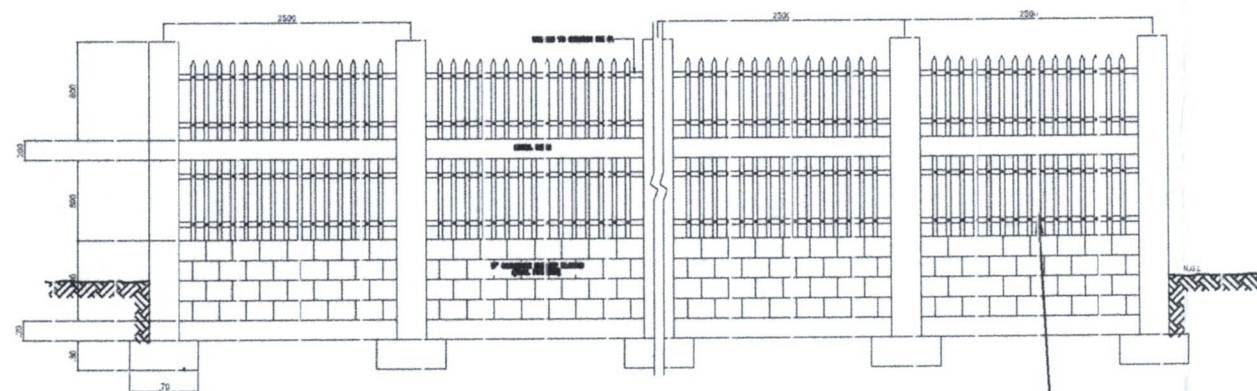
1 OF 2





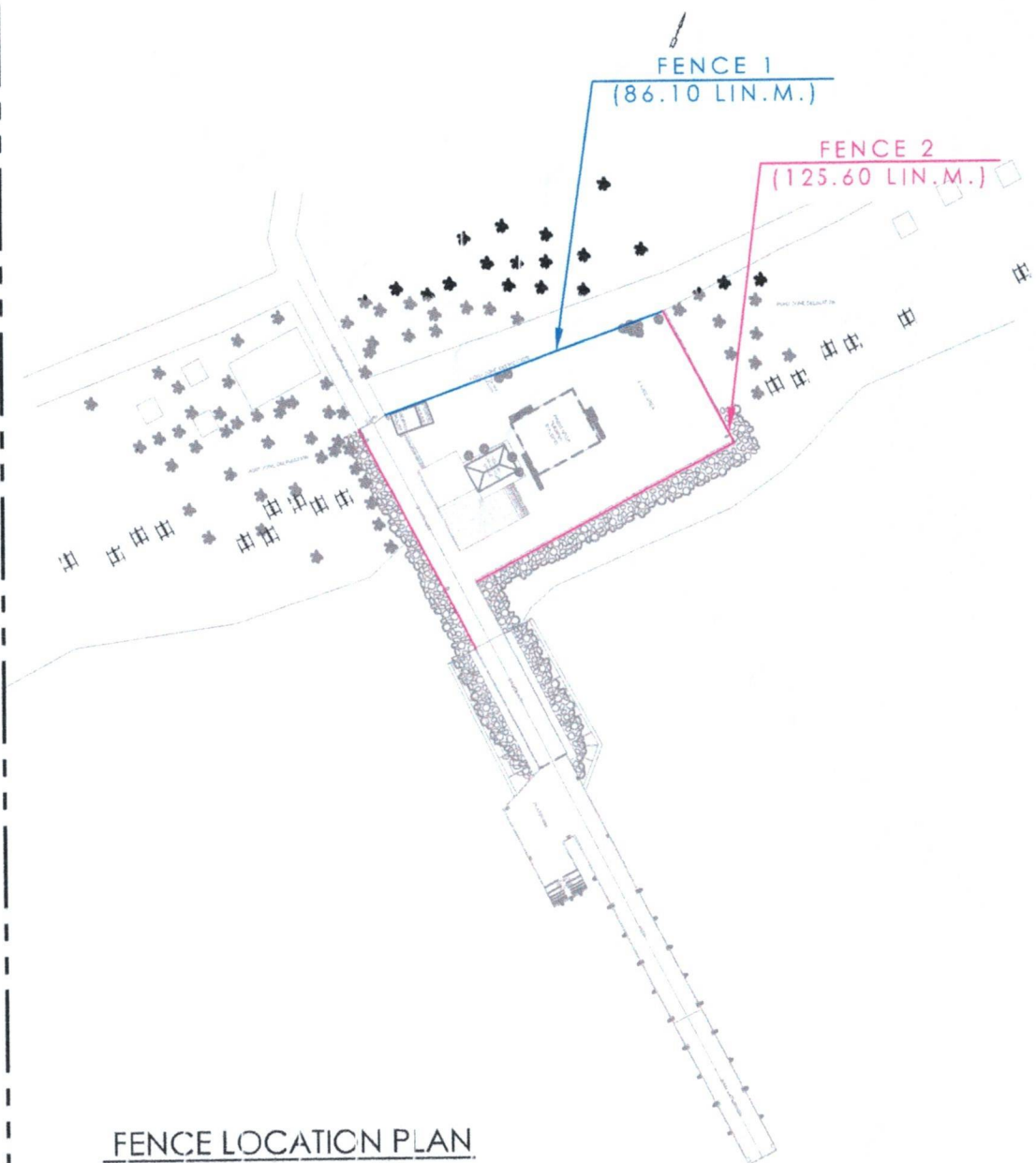
DETAILS FENCE 1  
SCALE: NTS

EXISTING CONCRETE FENCE TO BE  
PAINTED WITH ONE (1) COAT PRIMER  
AND TWO (2) COATS PAINT



DETAILS FENCE 2  
SCALE: NTS

EXISTING CONCRETE FENCE TO BE  
PAINTED WITH ONE (1) COAT PRIMER  
AND TWO (2) COATS PAINT



FENCE LOCATION PLAN  
SCALE: NTS

# NOTES:

1. ALL DIMENSIONS ARE IN MILLIMETERS UNLESS OTHERWISE SPECIFIED.
2. THE FENCE FROM THE WALL, FENCE UP TO THE MAIN FENCE MUST BE REPAINTED.
3. METAL FENCES/BARRIERS MUST BE COATED WITH RUST CONVERTER BEFORE APPLYING PAINT.



DEVELOPMENT PLAN  
PORT OF DINGALAN  
BRGY. NALAYA, DINGALAN, AURORA PROVINCE

PROJECT TITLE:

MAINTENANCE OF CONCRETE CURB, CONCRETE AND STEEL FENCE AT PORT OF DINGALAN, AURORA

DATE:

NOVEMBER 2023

PREPARED BY:

KRIZZIA ANNE C. FRIAL  
SENIOR ENGINEER 1A, PMO-BATAAN/AURORA

CHECKED BY:

EDGARDO B. ANDAYA JR.  
SUPERVISING ENGINEER 1A, PMO-BATAAN/AURORA

RECOMMENDING APPROVAL:

ALBERT FRANCIS T. GOLES  
ACTING ESD MANAGER, PMO-BATAAN/AURORA

APPROVED BY:

JENNELIZA D. FEBONG  
ACTING PORT MANAGER, PMO-BATAAN/AURORA

SHEET CONTENT:

FENCE DETAILS AND LOCATION PLAN

SHEET No.

2 OF 2