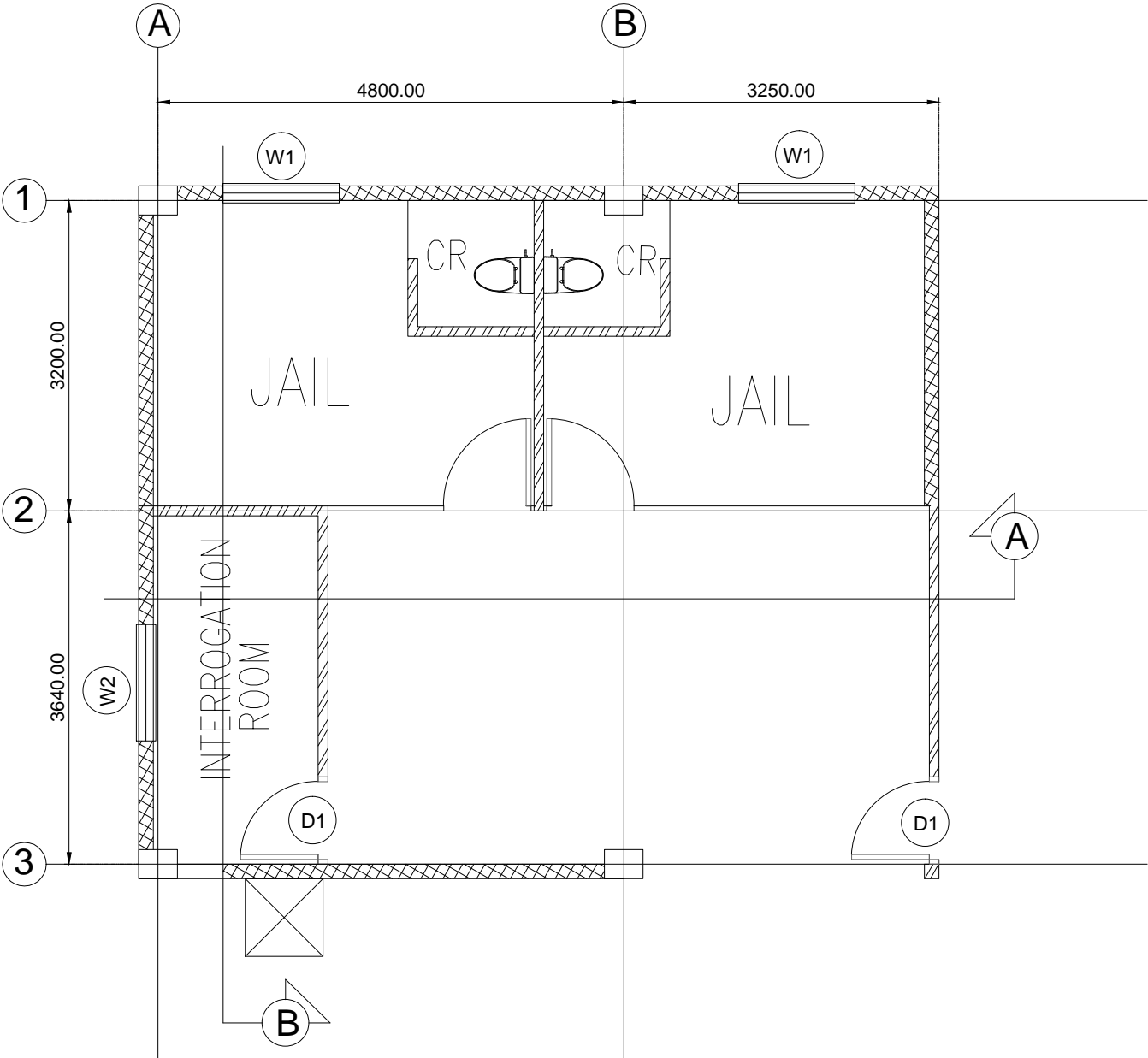


EXISTING PLAN

DRAWN NOT TO SCALE



- LEGEND:
- 6" THK CHB WALL W/ 16mm THK CEMENT PLASTER W/ SEMI-GLOSS LATEX PAINT FINISH
  - 4" THK CHB WALL W/ 16mm THK CEMENT PLASTER W/ SEMI-GLOSS LATEX PAINT FINISH

PROPOSED DETENTION CELL PLAN

SCALE 1:75mm



REAL ESTATE MANAGEMENT DIVISION

PROJECT TITLE: PROVISION OF DETENTION CELL FOR PORT POLICE DIVISION AT MARSMAN BLDG., SOUTH HARBOR, MANILA

PREPARED BY:  
JOHN EMMANUEL D. CUENTO  
SR. ENGINEER A

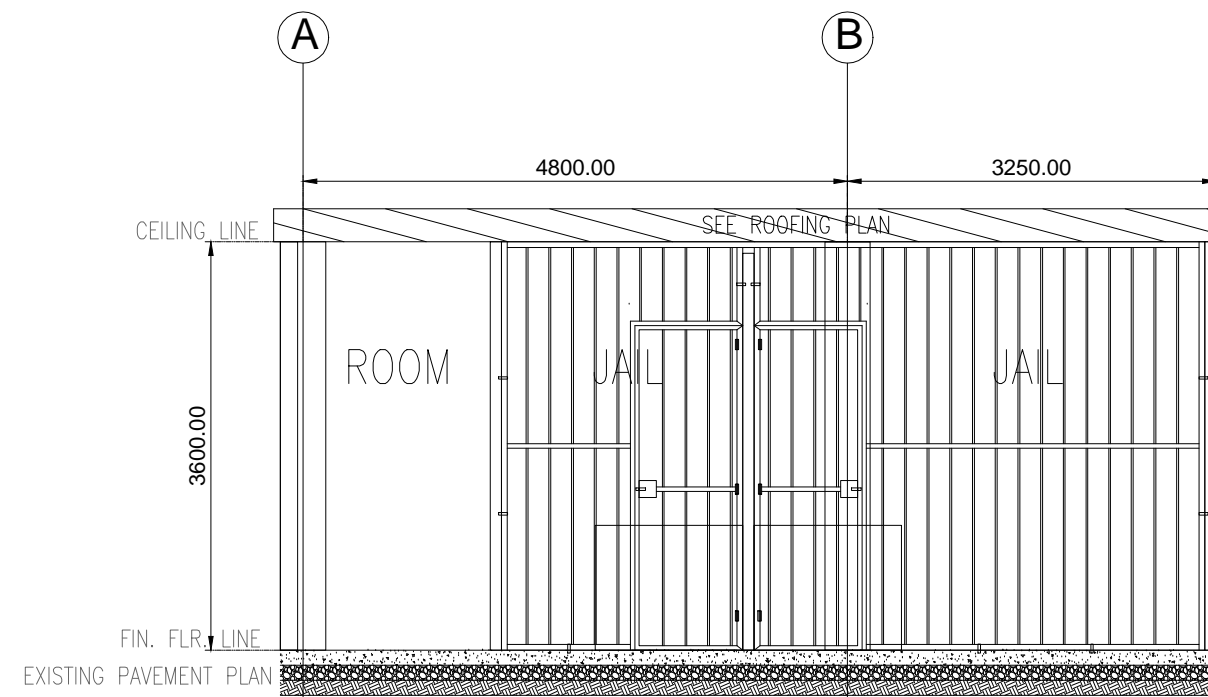
CHECKED BY:  
JULIEBIEN L. DAGCUTAN  
SUPERVISING ENGINEER A

REVIEWED & CHECKED BY:  
IRMA C. BACTOL  
PRINCIPAL ENGINEER A

RECOMMENDED BY:  
NOEL S. ORTUA  
OIC, REMD

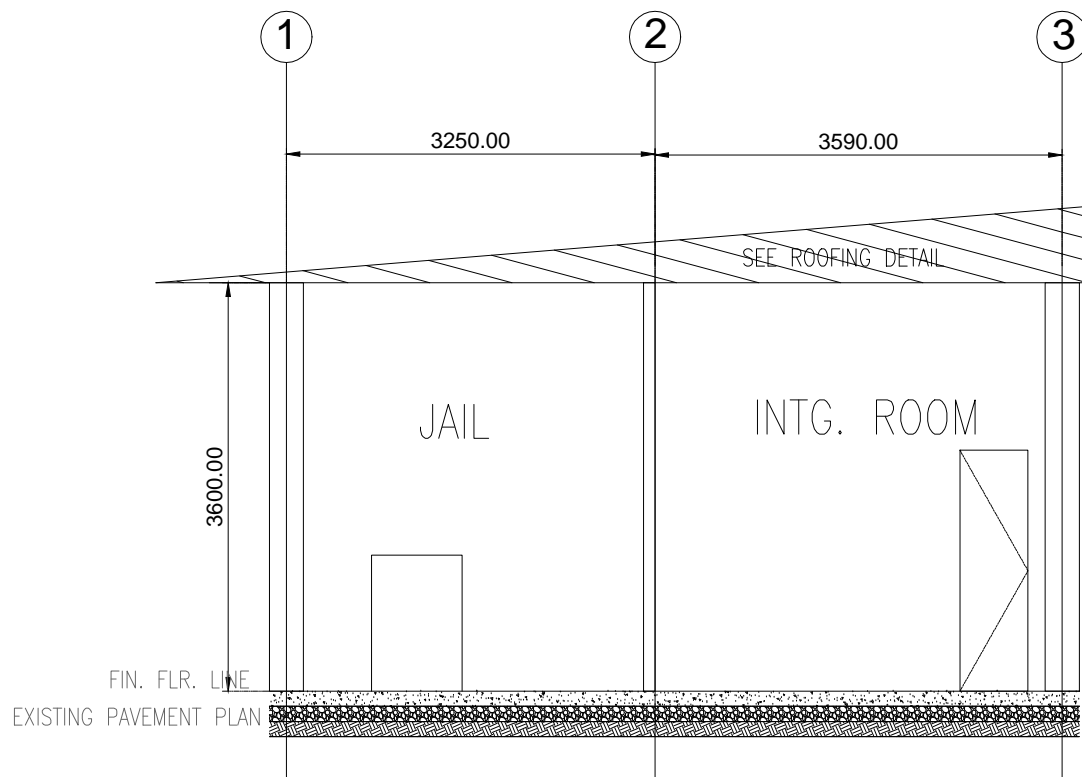
APPROVED BY:  
FRANCISQUIEL O. MANCILE  
PORT MANAGER, PMO NCR SOUTH

SHEET NO.  
**2**  
**10**



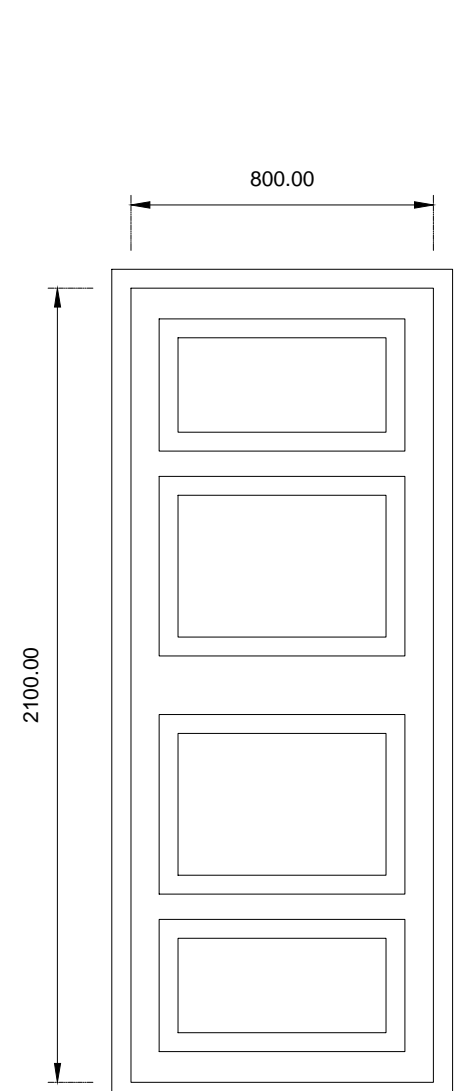
SECTION THRU "A"

SCALE 1:75mm

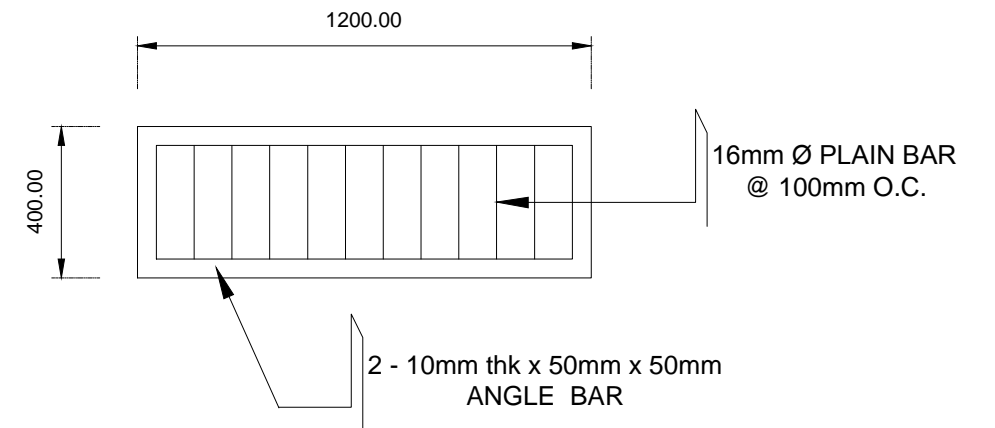


SECTION THRU "B"

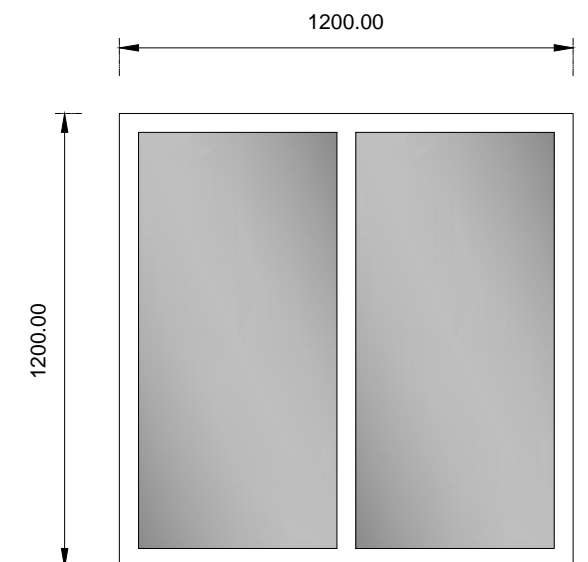
SCALE 1:75mm



D1- PANEL TYPE DOOR WITH  
2" X 4" DOOR JAMB (2 UNITS )  
AVAILABLE



W1 (2 UNITS)



W2- AWNING TYPE CLEAR GLASS, 6MM THK.  
WINDOW, W/ PVC FRAME (1 UNIT )  
AVAILABLE

SCHEDULE OF DOORS AND WINDOWS

SCALE 1:20mm



REAL ESTATE MANAGEMENT DIVISION

PROJECT TITLE: PROVISION OF DETENTION CELL FOR PORT POLICE DIVISION AT MARSMAN BLDG., SOUTH HARBOR, MANILA

PREPARED BY:

JOHN EMMANUEL D. CUENTO  
SR. ENGINEER A

CHECKED BY:

JULIEBIEN L. DAGCUTAN  
SUPERVISING ENGINEER A

REVIEWED & CHECKED BY:

IRMA C. BACTOL  
PRINCIPAL ENGINEER A

RECOMMENDED BY:

NOEL S. ORTUA  
OIC, REMD

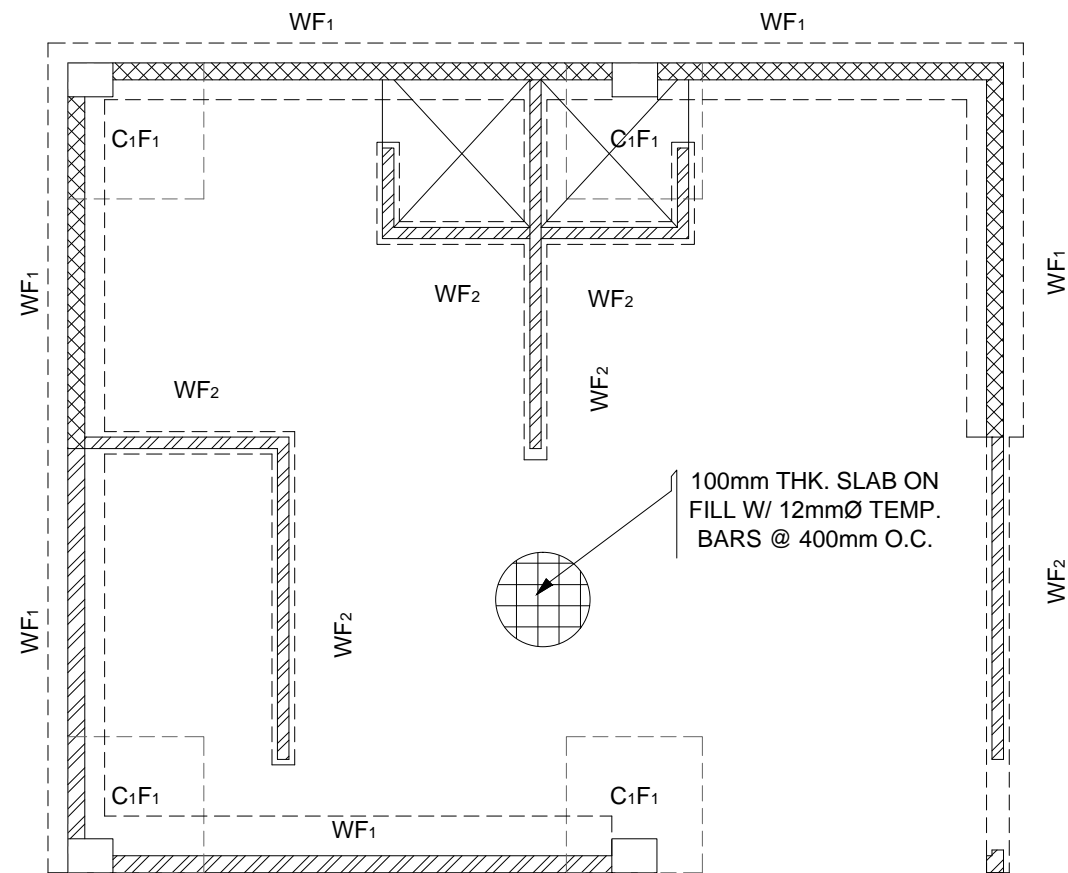
APPROVED BY:

FRANCISQUIEL O. MANCILE  
PORT MANAGER, PMO NCR SOUTH

SHEET NO.

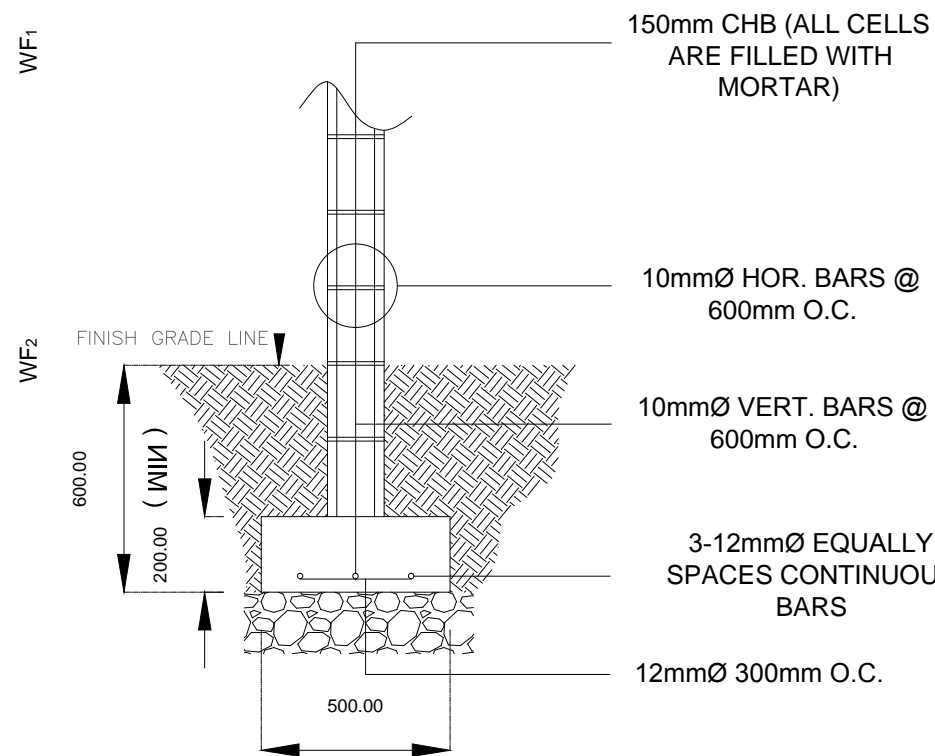
3

10

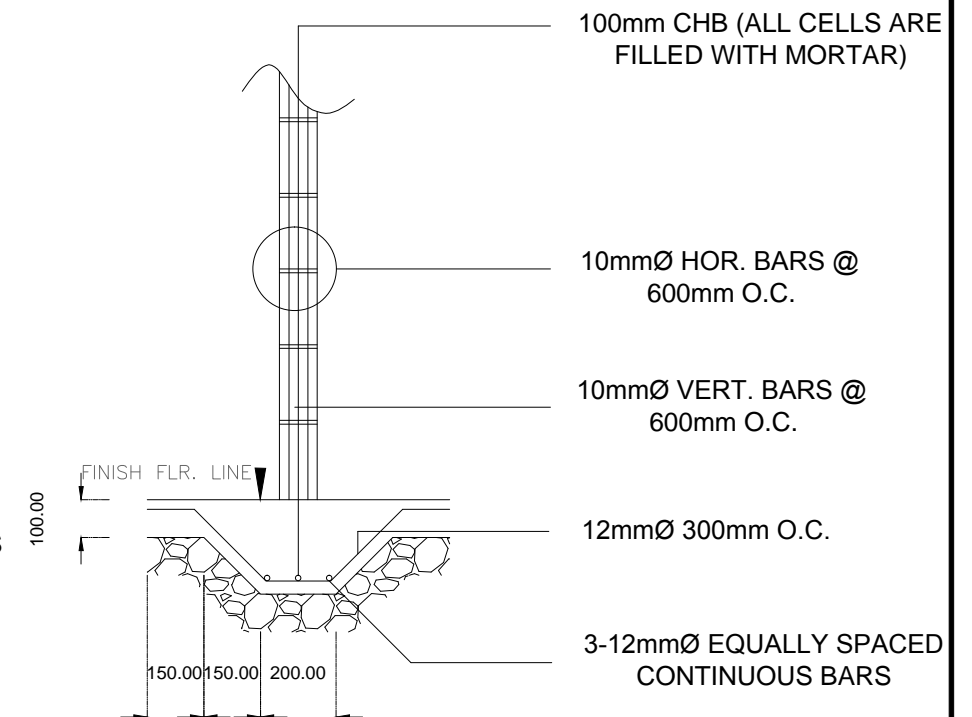


— CHB WALL  
 — CHB WALL WITH CLASS "A" MORTAR

**FOUNDATION PLAN**  
 SCALE 1:75mm



WF1 DETAILS



WF2 DETAILS

**DETAILS OF WALL FOOTINGS**  
 SCALE 1:20mm



REAL ESTATE MANAGEMENT DIVISION

PROJECT TITLE: PROVISION OF DETENTION CELL FOR PORT POLICE DIVISION AT MARSMAN BLDG., SOUTH HARBOR, MANILA

PREPARED BY:  
JOHN EMMANUEL D. CUENTO  
 SR. ENGINEER A

CHECKED BY:  
JULIEBIEN L. DAGCUTAN  
 SUPERVISING ENGINEER A

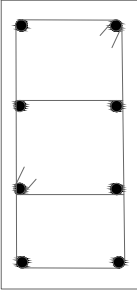
REVIEWED & CHECKED BY:  
IRMA C. BACTOL  
 PRINCIPAL ENGINEER A

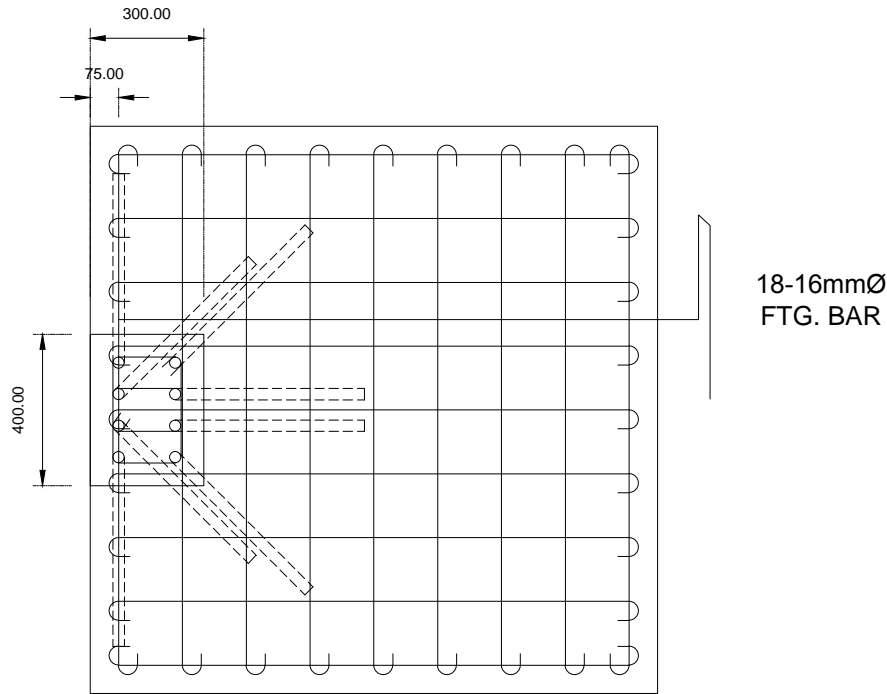
RECOMMENDED BY:  
NOEL S. ORTUA  
 OIC, REMD

APPROVED BY:  
FRANCISQUIEL O. MANCILE  
 PORT MANAGER, PMO NCR SOUTH

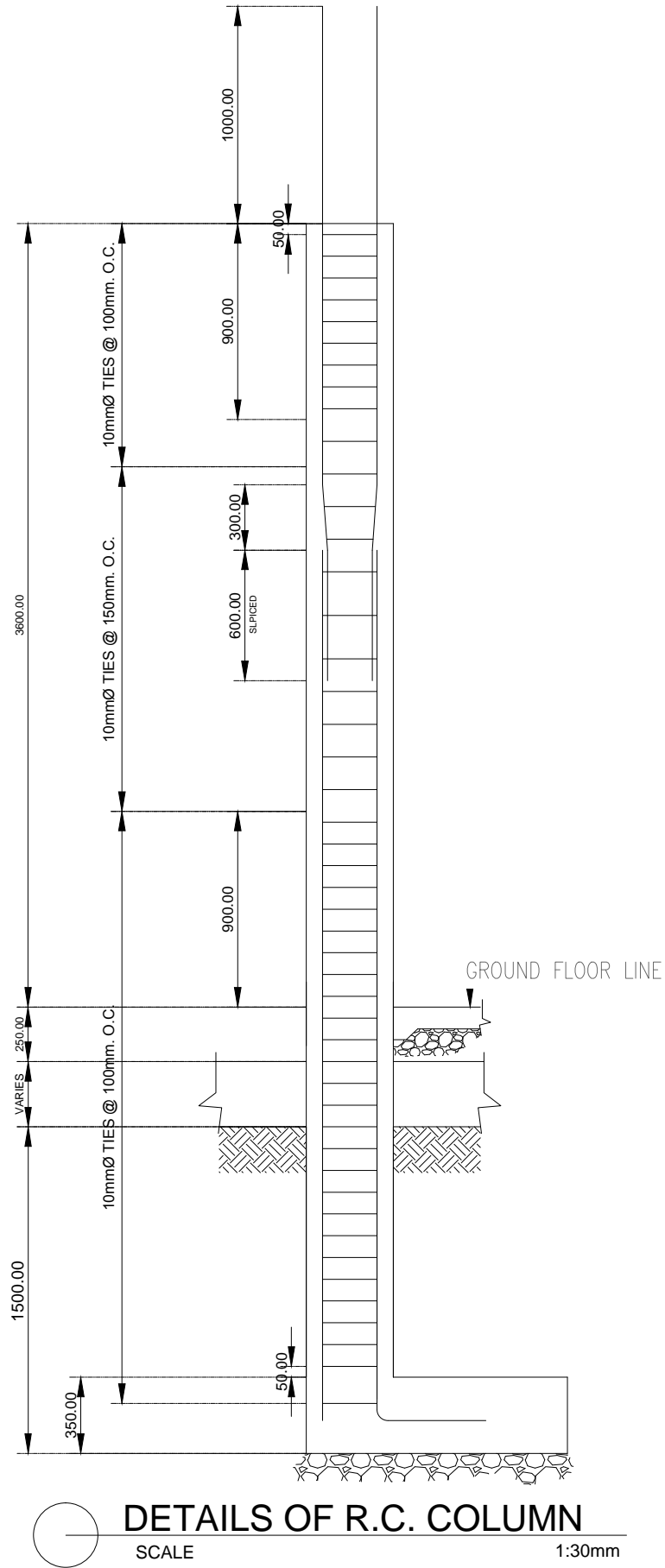
SHEET NO.  
 4  
 10

SCHEDULE OF COLUMN-FOOTINGS							
MARK FTG.	DIMENSIONS				MAIN REINFORCEMENT		
	L (MM)	W (MM)	T (MM)	D (MM)	REINFORCEMENT ALONG ASL	REINFORCEMENT ALONG ASW	REMARKS
F-1	1500	1500	300	1500	11- 16MMø	11- 16MMø	ISOLATED

SCHEDULE OF COLUMNS	
FLR. LEVEL	C-1
FOUNDATION TO SECOND FLOOR	
	SIZE 300 X 400
	REBARS 8 X 16MMø
	TIES - 2 -SETS 10MM2 1@50MM 6@100MM
FOUNDATION	INCREASE 50MM ALL AROUND



FOOTING DETAILS  
SCALE 1:20mm



REAL ESTATE MANAGEMENT DIVISION

PROJECT TITLE: PROVISION OF DETENTION CELL FOR PORT POLICE DIVISION AT MARSMAN BLDG., SOUTH HARBOR, MANILA

PREPARED BY:  
JOHN EMMANUEL D. CUENTO  
SR. ENGINEER A

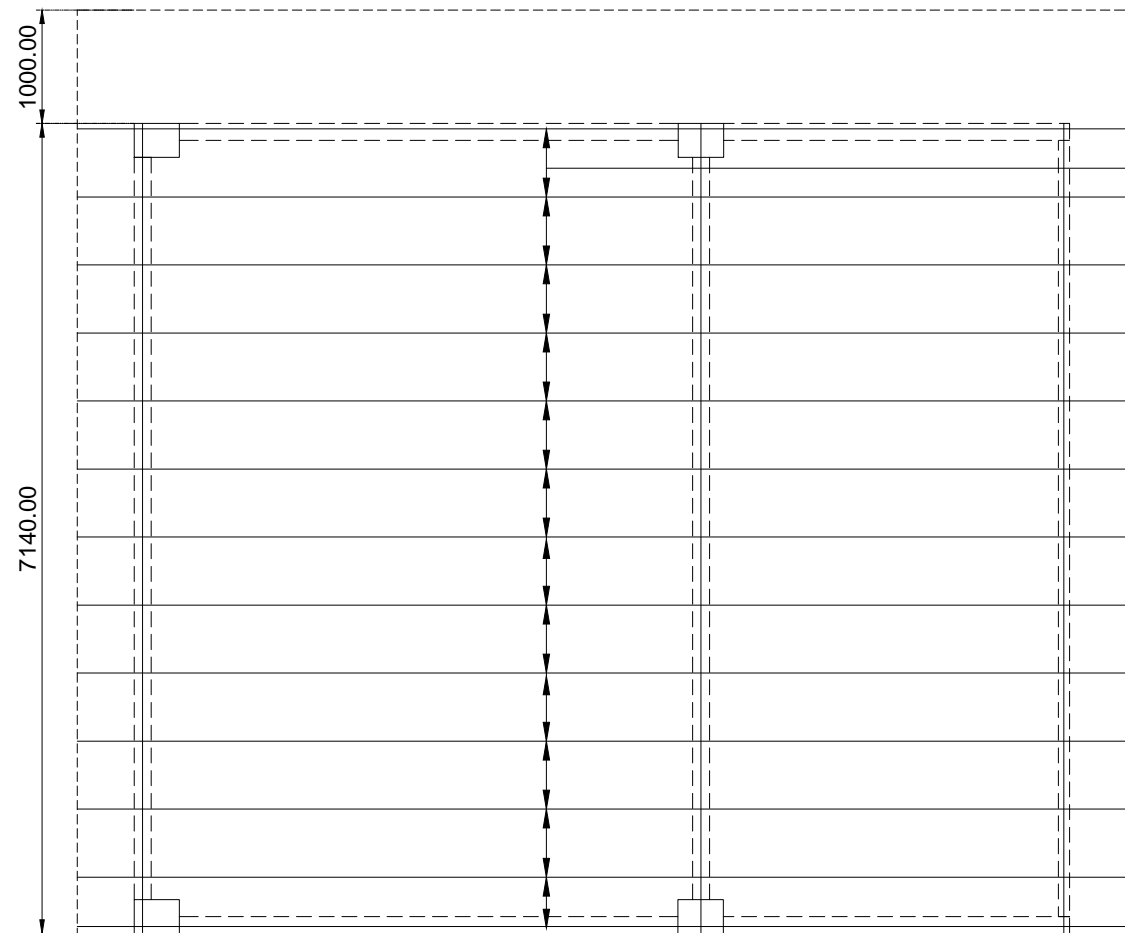
CHECKED BY:  
JULIEBIEN L. DAGCUTAN  
SUPERVISING ENGINEER A

REVIEWED & CHECKED BY:  
IRMA C. BACTOL  
PRINCIPAL ENGINEER A

RECOMMENDED BY:  
NOEL S. ORTUA  
OIC, REMD

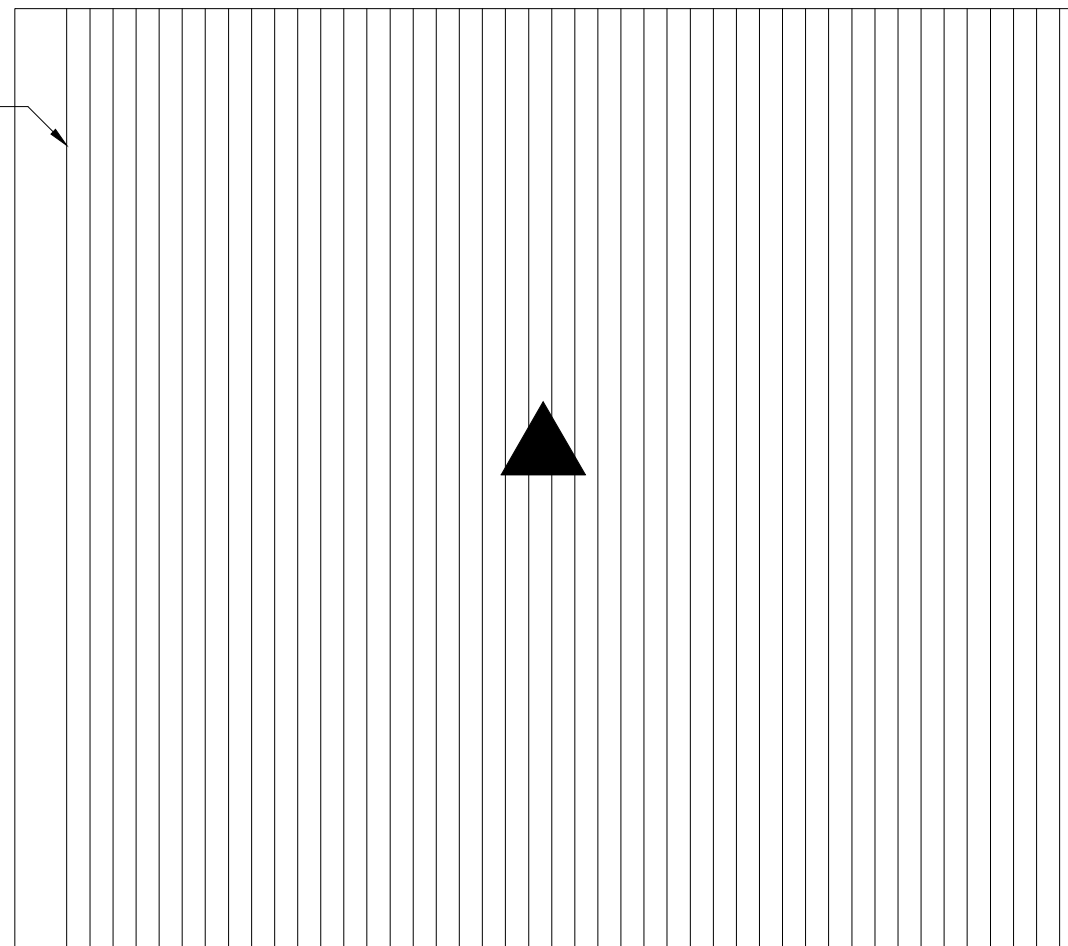
APPROVED BY:  
FRANCISQUIEL O. MANCILE  
PORT MANAGER, PMO NCR SOUTH

SHEET NO.  
5  
10

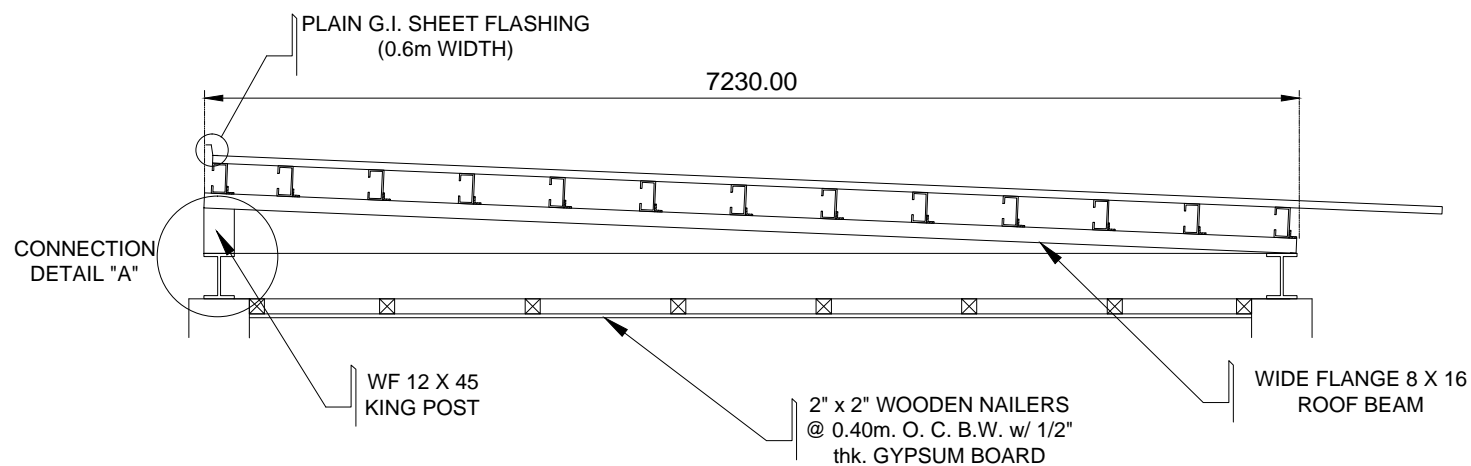


**ROOF FRAMING PLAN**  
SCALE 1:75mm

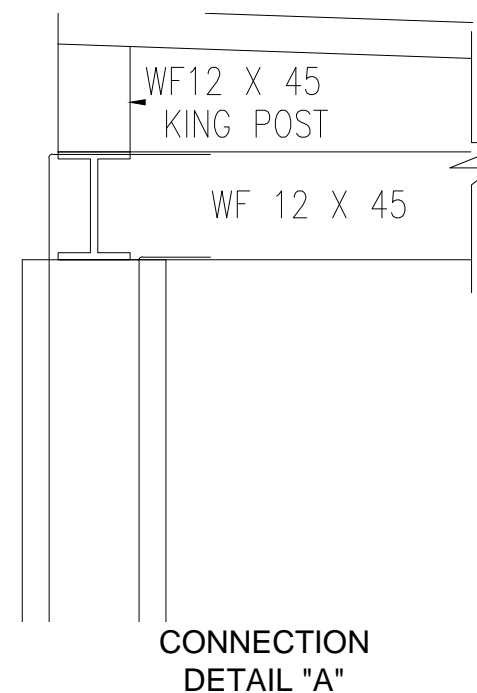
GA. 24 PRE-PAINTED  
CORROGATED G.I.  
SHEET



**ROOF PLAN**  
NOT TO SCALE



**SCHEMATIC DIAGRAM**  
SCALE 1:50mm



**CONNECTION  
DETAIL "A"**



REAL ESTATE MANAGEMENT DIVISION

PROJECT TITLE: PROVISION OF DETENTION CELL FOR PORT POLICE DIVISION AT MARSMAN BLDG., SOUTH HARBOR, MANILA

PREPARED BY:

JOHN EMMANUEL D. CUENTO  
SR. ENGINEER A

CHECKED BY:

JULIEBIEN L. DAGCUTAN  
SUPERVISING ENGINEER A

REVIEWED & CHECKED BY:

IRMA C. BACTOL  
PRINCIPAL ENGINEER A

RECOMMENDED BY:

NOEL S. ORTUA  
OIC, REMD

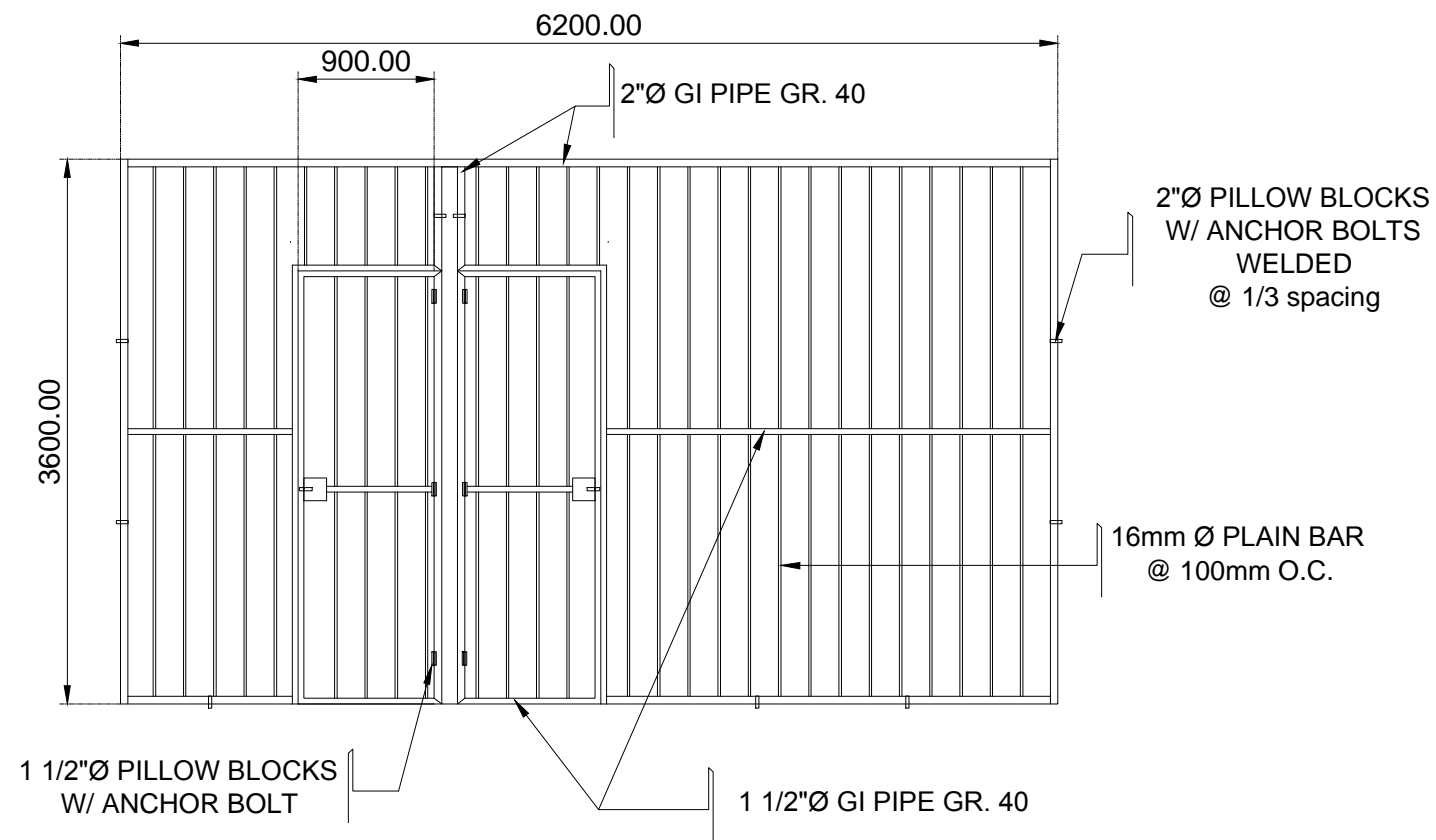
APPROVED BY:

FRANCISQUIEL O. MANCILE  
PORT MANAGER, PMO NCR SOUTH

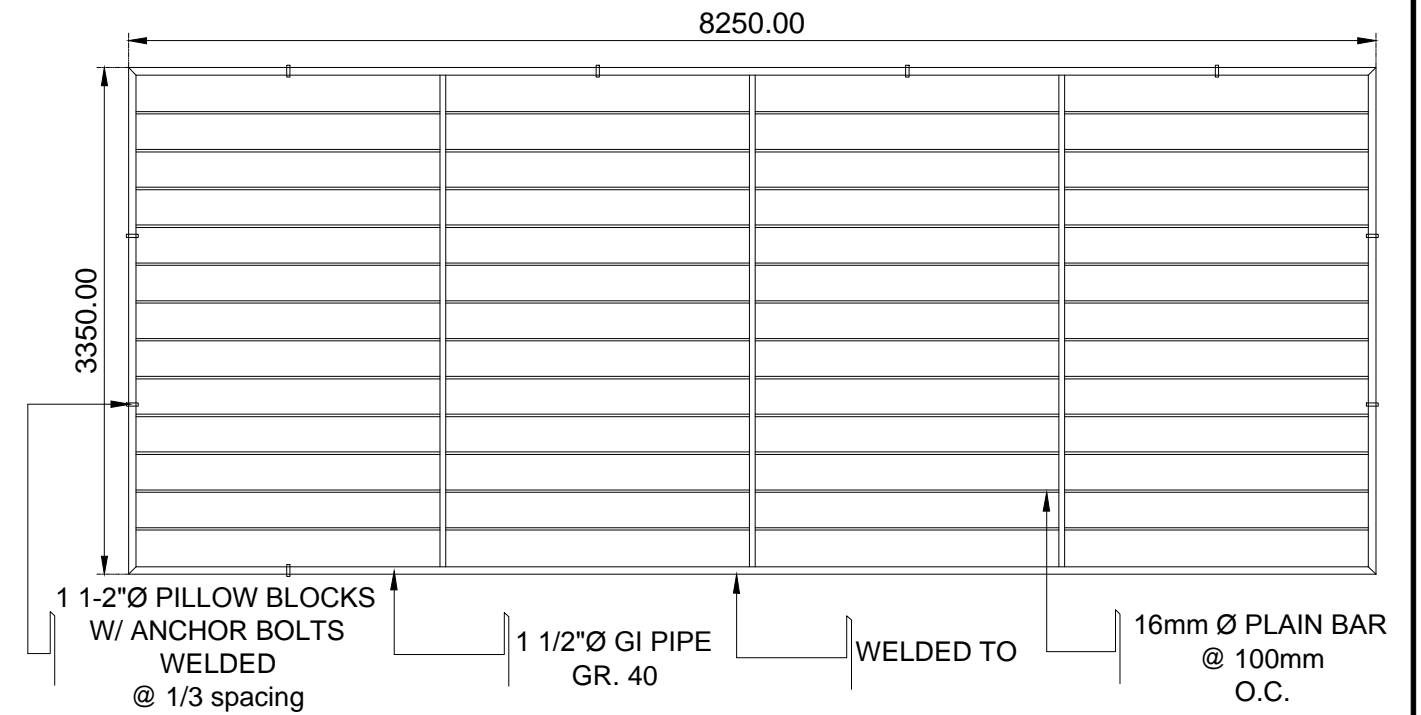
SHEET NO.

6  
10





DETENTION CELL RAILINGS DETAIL



TOP GRILLS DETAIL

## DETENTION CELL DETAILS



SCALE

1:50mm



REAL ESTATE MANAGEMENT DIVISION

PROJECT TITLE: PROVISION OF DETENTION CELL FOR PORT POLICE DIVISION AT MARSMAN BLDG., SOUTH HARBOR, MANILA

PREPARED BY:

JOHN EMMANUEL D. CUENTO  
SR. ENGINEER A

CHECKED BY:

JULIEBIEN L. DAGCUTAN  
SUPERVISING ENGINEER A

REVIEWED & CHECKED BY:

IRMA C. BACTOL  
PRINCIPAL ENGINEER A

RECOMMENDED BY:

NOEL S. ORTUA  
OIC, REMD

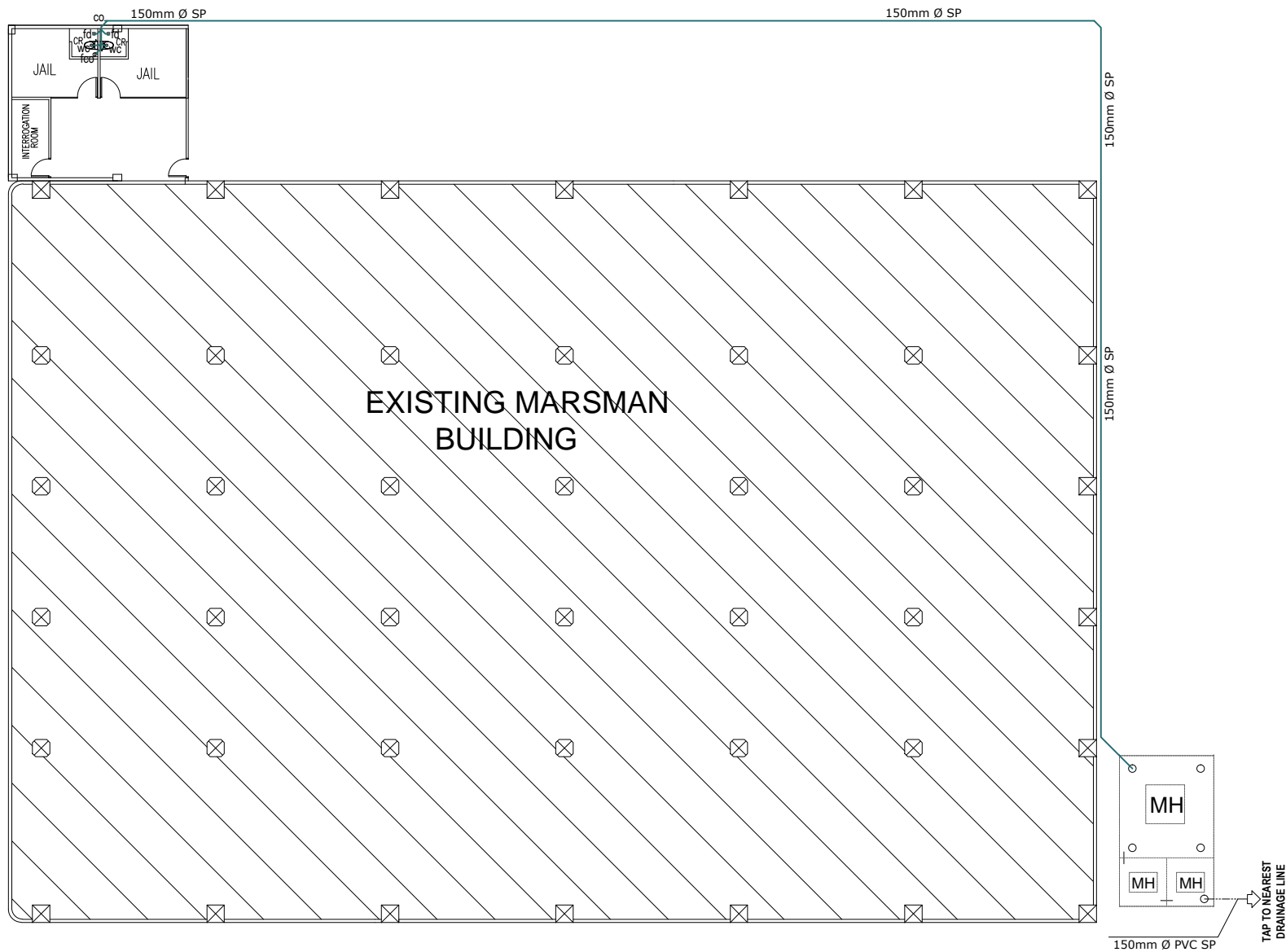
APPROVED BY:

FRANCISQUIEL O. MANCILE  
PORT MANAGER, PMO NCR SOUTH

SHEET NO.

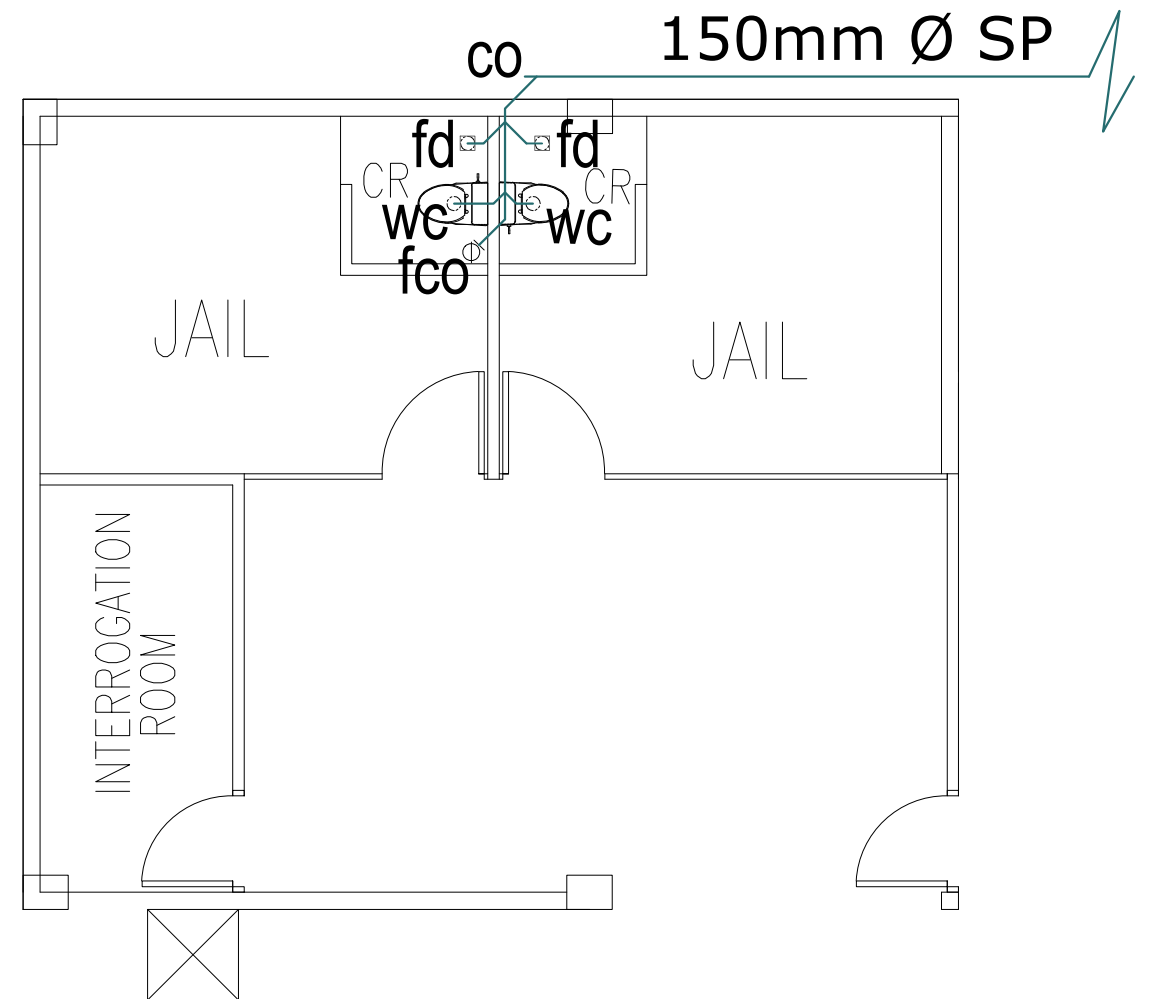
7

10



## PLUMBING LAY-OUT

NOT TO SCALE



## WATER WASTE LINE LAY-OUT

SCALE

1:75mm

### LEGEND:

- WC - ELONGATED TYPE WATER CLOSET
- FD - FLOOR DRAIN
- FCO - FLOOR CLEAN OUT
- CO - CLEAN OUT
- 150mm Ø PVC SEWER PIPE



REAL ESTATE MANAGEMENT DIVISION

PROJECT TITLE: PROVISION OF DETENTION CELL FOR PORT POLICE DIVISION AT MARSMAN BLDG., SOUTH HARBOR, MANILA

PREPARED BY:

JOHN EMMANUEL D. CUENTO  
SR. ENGINEER A

CHECKED BY:

JULIEBIEN L. DAGCUTAN  
SUPERVISING ENGINEER A

REVIEWED & CHECKED BY:

IRMA C. BACTOL  
PRINCIPAL ENGINEER A

RECOMMENDED BY:

NOEL S. ORTUA  
OIC, REMD

APPROVED BY:

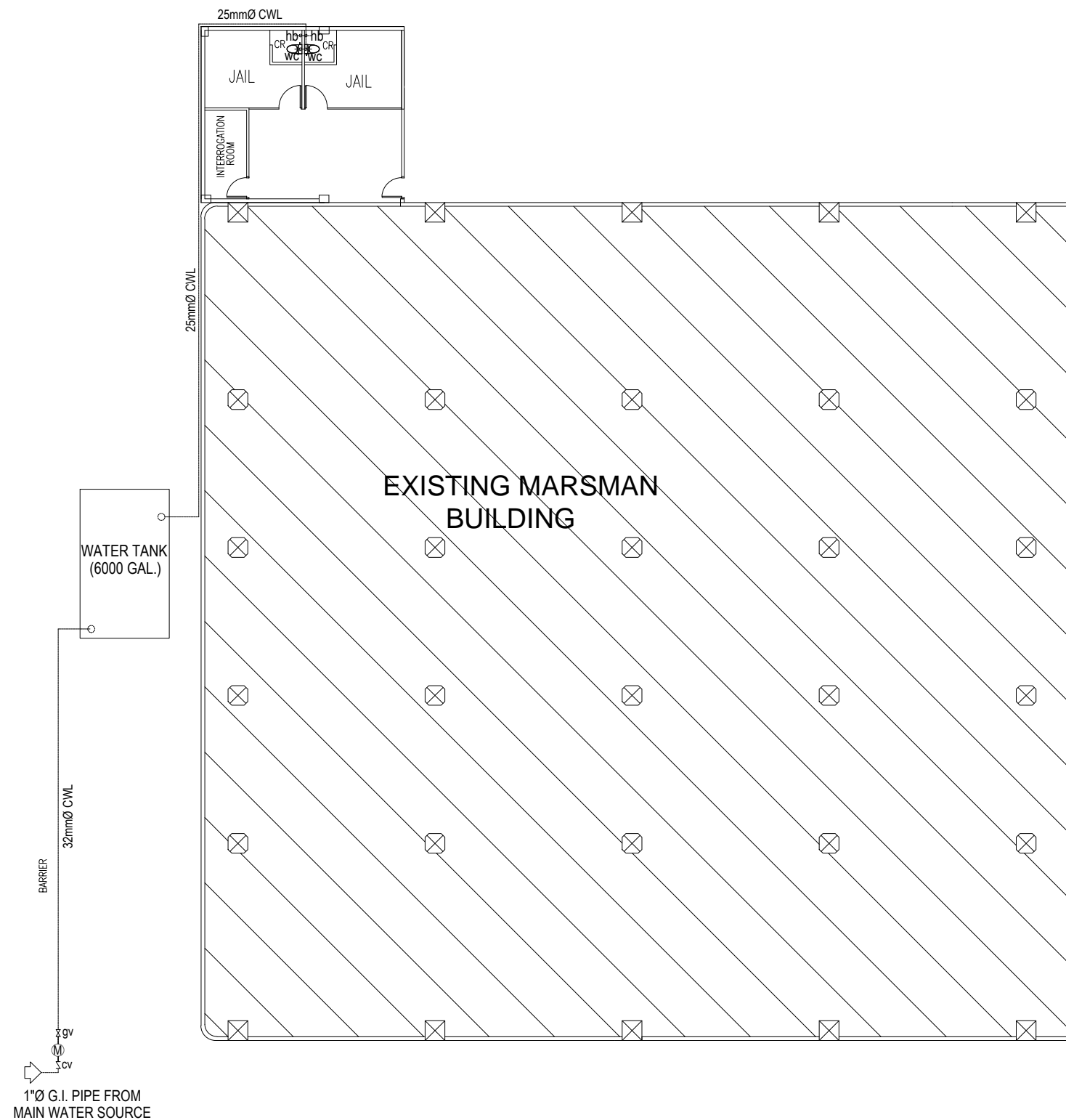
FRANCISQUIEL O. MANCILE  
PORT MANAGER, PMO NCR SOUTH

SHEET NO.

8

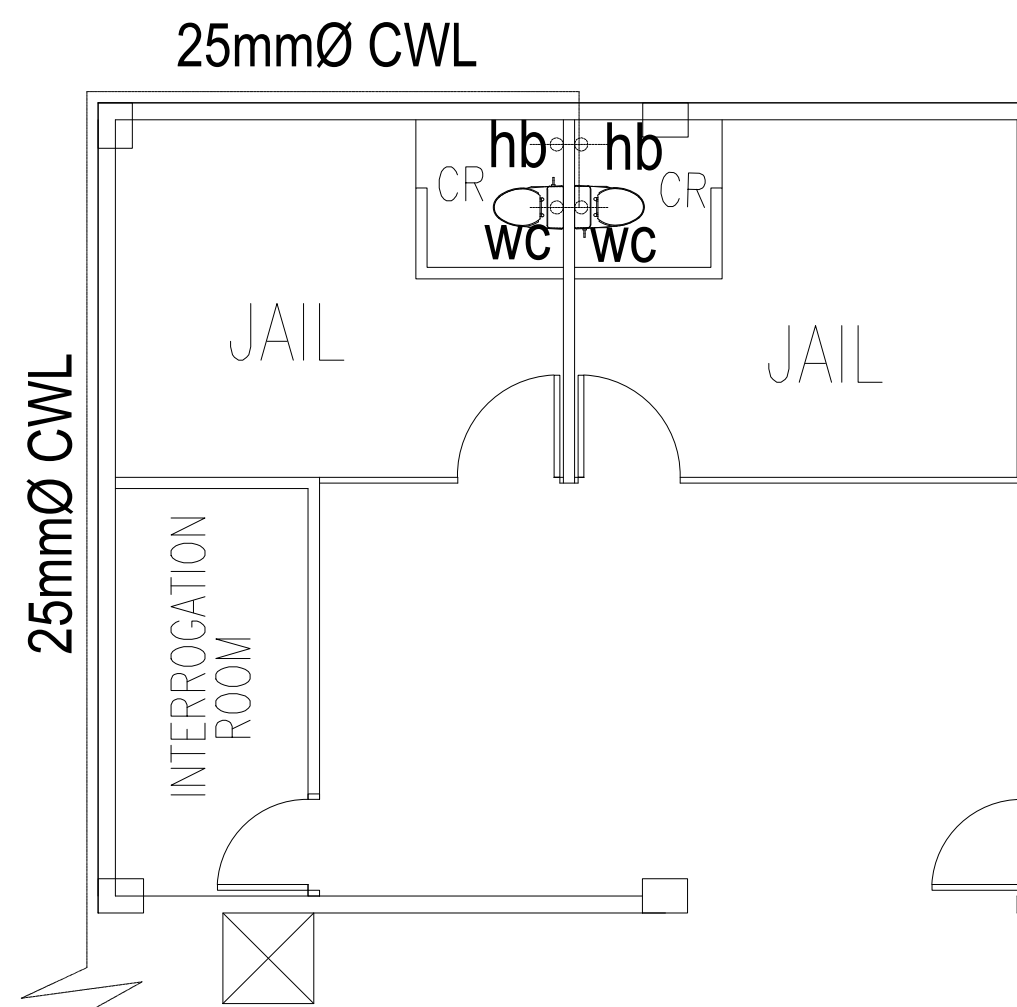
10





**COLD WATER LINE LAY-OUT PLAN**

NOT TO SCALE



**COLD WATER LINE LAY-OUT**

SCALE 1:75mm

**LEGEND:**

- WC - ELONGATED TYPE WATER CLOSET
- HB - HOSE BIB
- 25mm Ø PVC COLD WATER LINE



REAL ESTATE MANAGEMENT DIVISION

PROJECT TITLE: PROVISION OF DETENTION CELL FOR PORT POLICE DIVISION AT MARSMAN BLDG., SOUTH HARBOR, MANILA

PREPARED BY:  
JOHN EMMANUEL D. CUENTO  
SR. ENGINEER A

CHECKED BY:  
JULIEBIEN L. DAGCUTAN  
SUPERVISING ENGINEER A

REVIEWED & CHECKED BY:  
IRMA C. BACTOL  
PRINCIPAL ENGINEER A

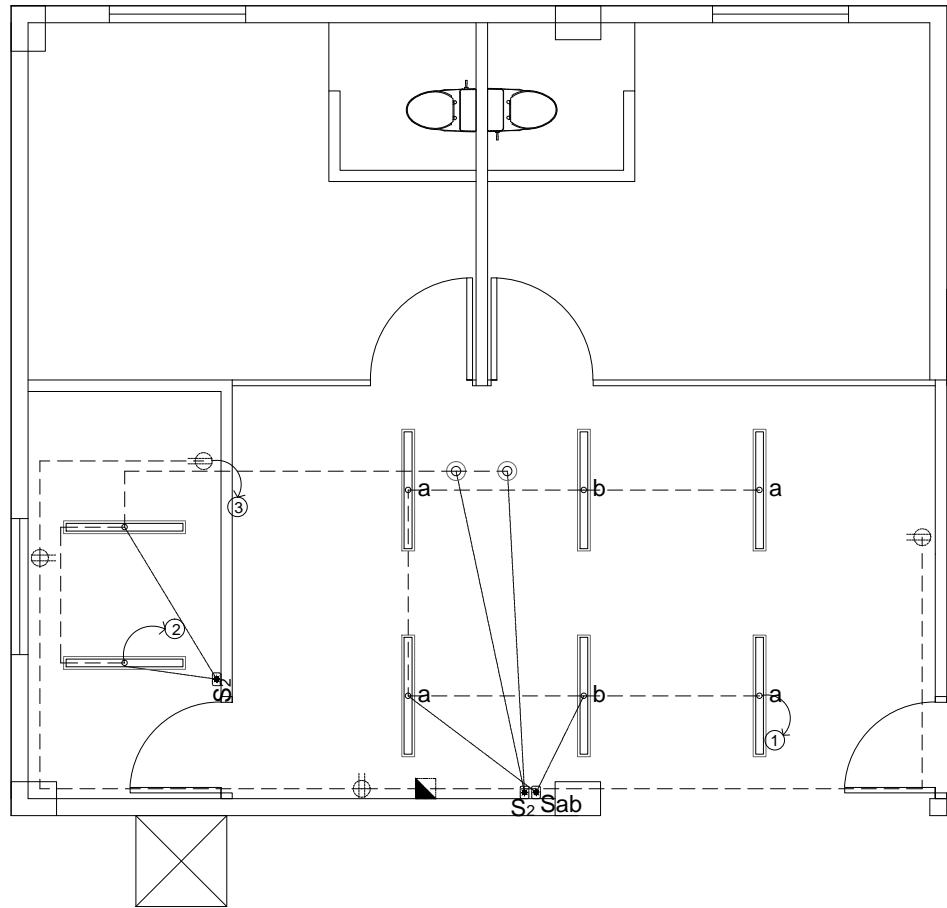
RECOMMENDED BY:  
NOEL S. ORTUA  
OIC, REMD

APPROVED BY:  
FRANCISQUIEL O. MANCILE  
PORT MANAGER, PMO NCR SOUTH

SHEET NO.

9

10



LOAD SCHEDULE  
PANEL 1

CIRCUIT	DESCRIPTION	VOLTS	VA	AB	CIRCUIT PROTECTION	SIZE OF WIRE	SIZE OF CONDUIT
1	6 - 2 X 40W FLUORESCENT FIXTURES	220V	600	2.73	20 AT, 1Ø	3.5 mm <sup>2</sup> Ø THHN STRANDED COPPER WIRE	15mmØ PVC
2	2 - 2 X 40W FLUORESCENT FIXTURES 2 - 18W CEILING DOWN LAMP SPOTLIGHT	220V	400	1.82	20 AT, 1Ø	- DO -	- DO -
3	4 DUPLEX CONVENIENCE OUTLET	220V	800	3.64	20 AT, 1Ø	5.5 mm <sup>2</sup> Ø THHN STRANDED COPPER WIRE	- DO -
4	SPARE						
	MAIN	220V	1800	8.19	40 AT, 1Ø	8.0 mm <sup>2</sup> Ø THHN STRANDED COPPER WIRE	20mmØ PVC

ELECTRICAL LINE LAY-OUT  
SCALE 1:75mm

LEGEND:

- 2 X 40W FLUORESCENT  
FIXTURES
- 18W CEILING DOWN LAMP  
SPOTLIGHT
- S<sub>2</sub> — TWO GANG SWITCH
- PANEL BOARD
- DUPLEX CONVENIENCE  
OUTLET



REAL ESTATE MANAGEMENT DIVISION

PROJECT TITLE: PROVISION OF DETENTION CELL FOR PORT POLICE DIVISION AT MARSMAN BLDG., SOUTH HARBOR, MANILA

PREPARED BY:  
JOHN EMMANUEL D. CUENTO  
SR. ENGINEER A

CHECKED BY:  
JULIEBIEN L. DAGCUTAN  
SUPERVISING ENGINEER A

REVIEWED & CHECKED BY:  
IRMA C. BACTOL  
PRINCIPAL ENGINEER A

RECOMMENDED BY:  
NOEL S. ORTUA  
OIC, REMD

APPROVED BY:  
FRANCISQUIEL O. MANCILE  
PORT MANAGER, PMO NCR SOUTH

SHEET NO.  
10  
10