

AREAS TO BE DEPLOYED WITH TELEPHONE NETWORKING

AREA-1

Gate 1 Cargo
Gate 2 PTB Entrance

AREA-2

IT/Electrical Room
Passenger Terminal 1, information counter
Malaskit Help Desk 1 @ PTB Entrance
BXM Entrance

AREA-3

Admin Guard
Engineering Services Division
Office of the Port Manager
Administrative Division
Finance Services Division

AREA-4

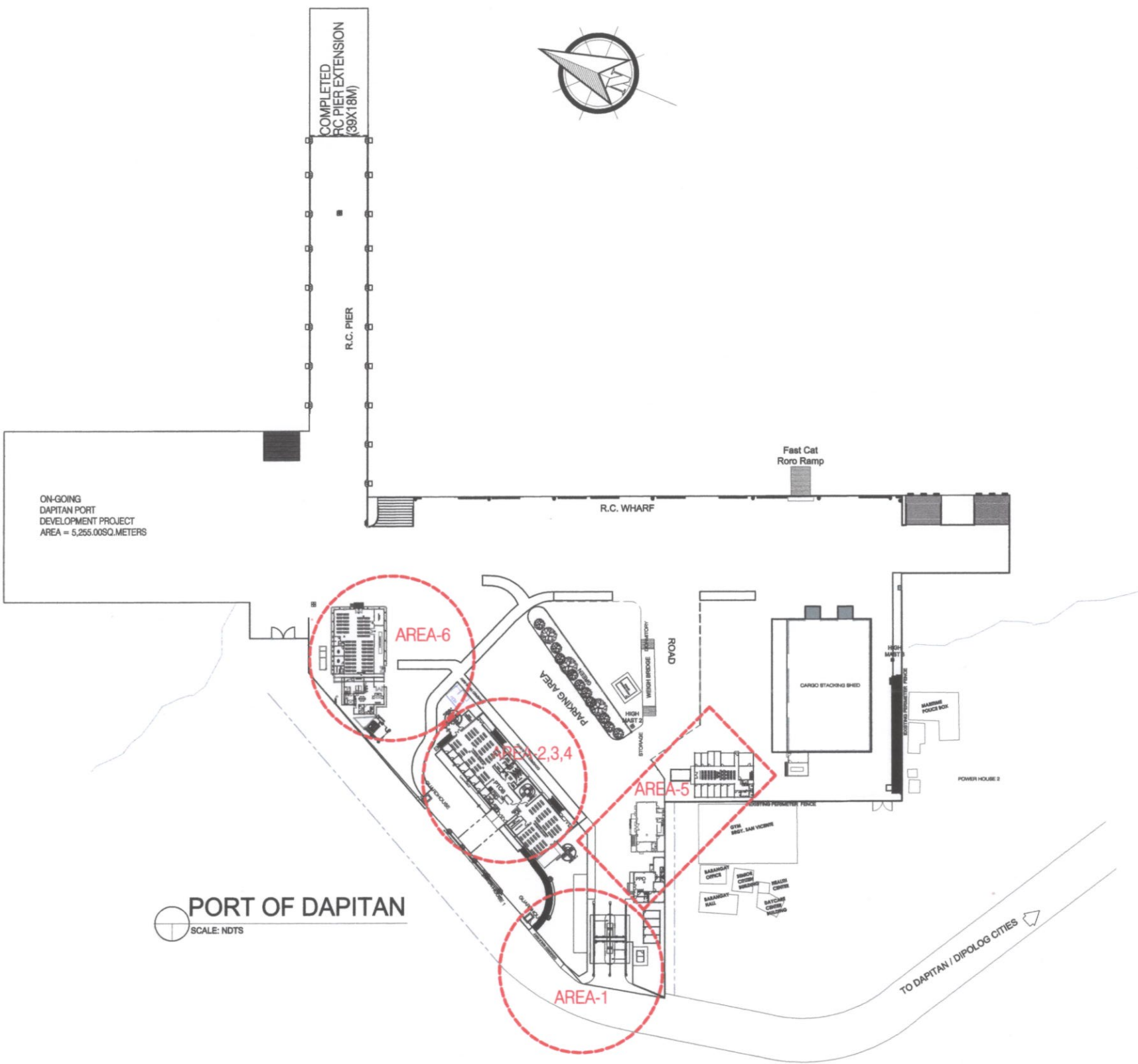
Port Manager's Room (Quarter)
COA Office
Conference Room, 3rd Floor GAD Hall
GAD Hall

AREA-5

Malaskit Help Desk 2 Near PPD
Port Police Division
Dormitory for Transient Passengers
Port Services Division
Harbor Office
Port Intergrated Clearing Office
Cashier
Assessment

AREA-6

Powerhouse 1
PM's Quarter
Passenger Terminal 2



PROJECT TITLE:

Supply, Deliver, Install, Commission, and Program IP PBX Telephone Networking System at PMO-Zamboanga Del Norte

PREPARED BY:

ENGR. BRYAN E. BALLON
ACTING SUPERVISING ENGINEER A

CHECKED BY:

RODERICK Q. GAHUMAN
SYSTEM INFORMATION ANALYST

RECOMMENDING APPROVAL BY:

ENGR. ABDURASAD S. HASAN
ESD MANAGER

APPROVED BY:

WYETH T. ACAS
ASD MANAGER

ENGR. SUBANRIO I. LIM
PORT MANAGER

SHEET CONTENTS:

PORT OF DAPITAN LAYOUT

SCALE:

AS SHOWN

SHEET NO.:

1 7

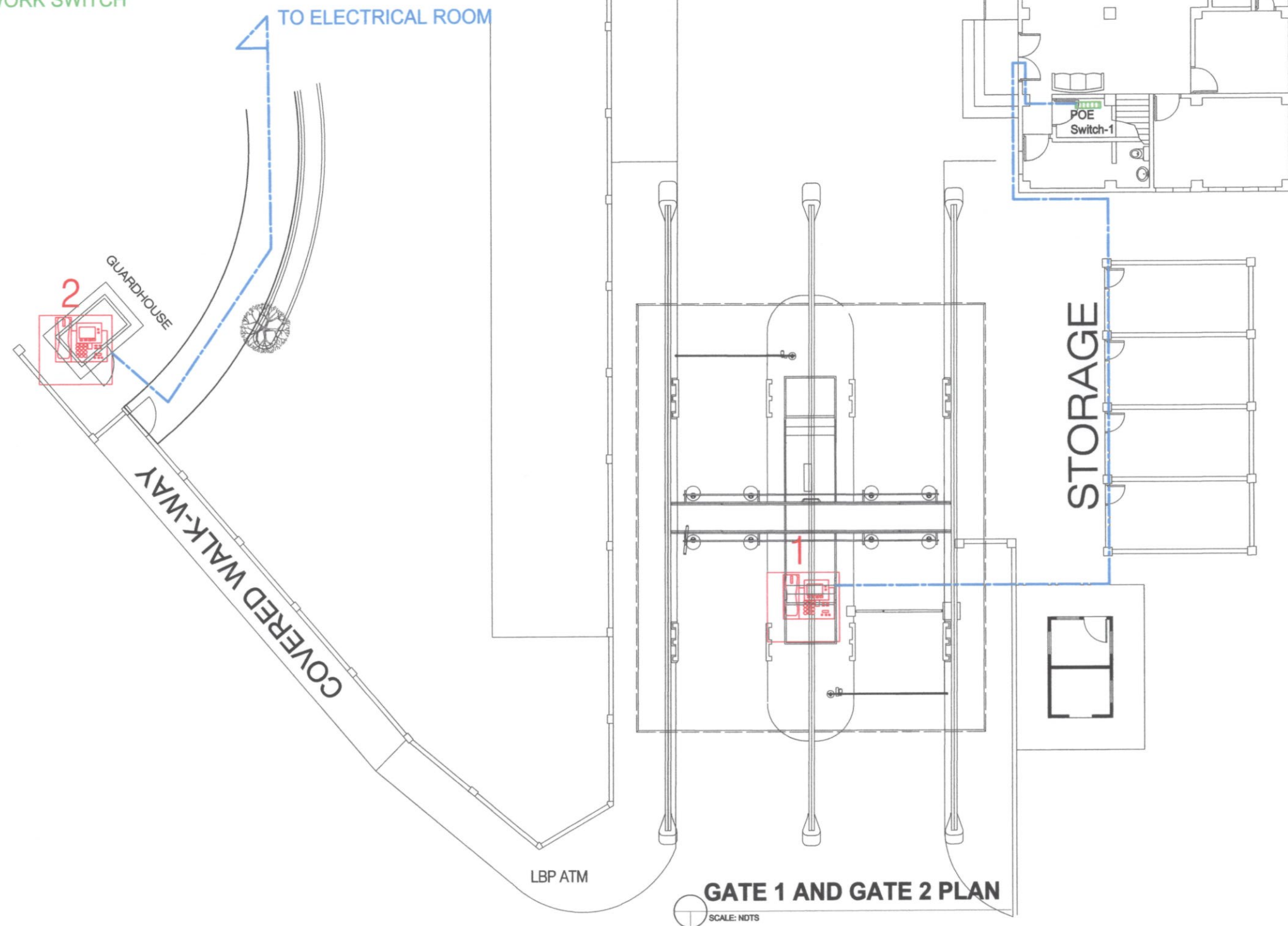
MAY 11, 2022

LEGEND: AREA-1

1. Gate 1 Cargo
2. Gate 2 PTB Entrance

--- LOCAL AREA NETWORK USING CAT6 UTP CABLE

POE NETWORK SWITCH



GATE 1 AND GATE 2 PLAN

SCALE: NDTs



PROJECT TITLE:

Supply, Deliver, Install, Commission, and Program IP PBX Telephone Networking System at PMO-Zamboanga Del Norte

PREPARED BY:

ENGR. BRYAN E. BALLON
ACTING SUPERVISING ENGINEER A

CHECKED BY:

RODERICK Q. GAHUMAN
SYSTEM INFORMATION ANALYST

RECOMMENDING APPROVAL BY:

ENGR. ABDURASAD S. HASAN
ESD MANAGER

APPROVED BY:

ENGR. SUBANRICK LIM
PORT MANAGER

SHEET CONTENTS:

Gate 1 Cargo
Gate 2 PTB Entrance

SCALE:

AS
SHOWN

SHEET NO.:

2 7

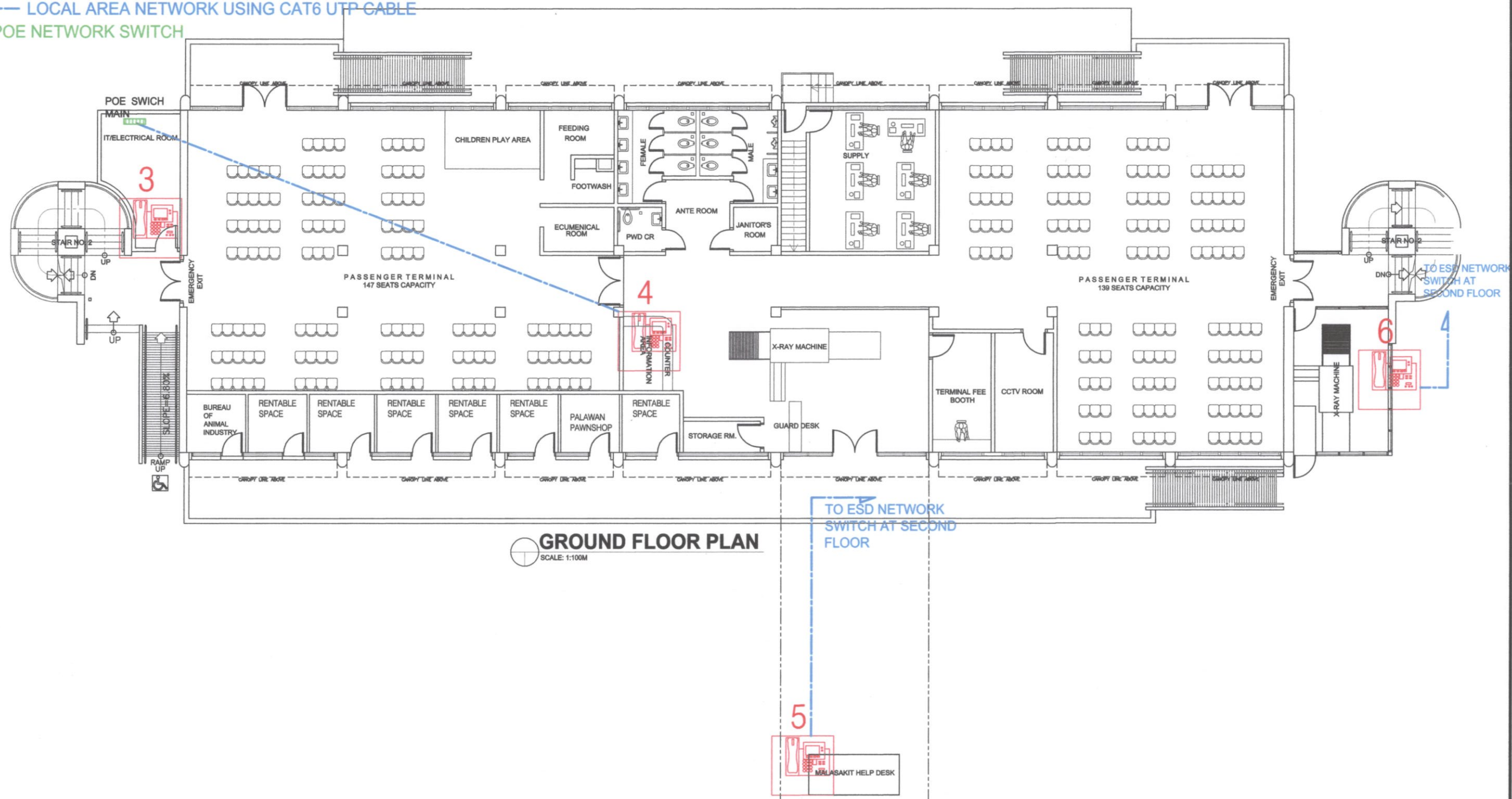
MAY 11, 2022


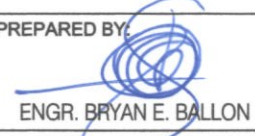
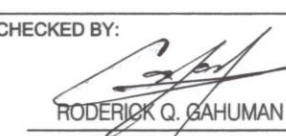
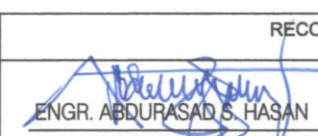
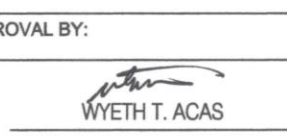
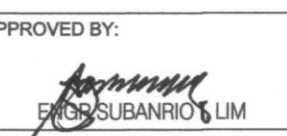
LEGEND: AREA-2

3. IT/Electrical Room
4. Passenger Terminal 1, information counter
5. Malaskit Help Desk 1 @ PTB Entrance
6. BXM Entrance

----- LOCAL AREA NETWORK USING CAT6 UTP CABLE

POE NETWORK SWITCH



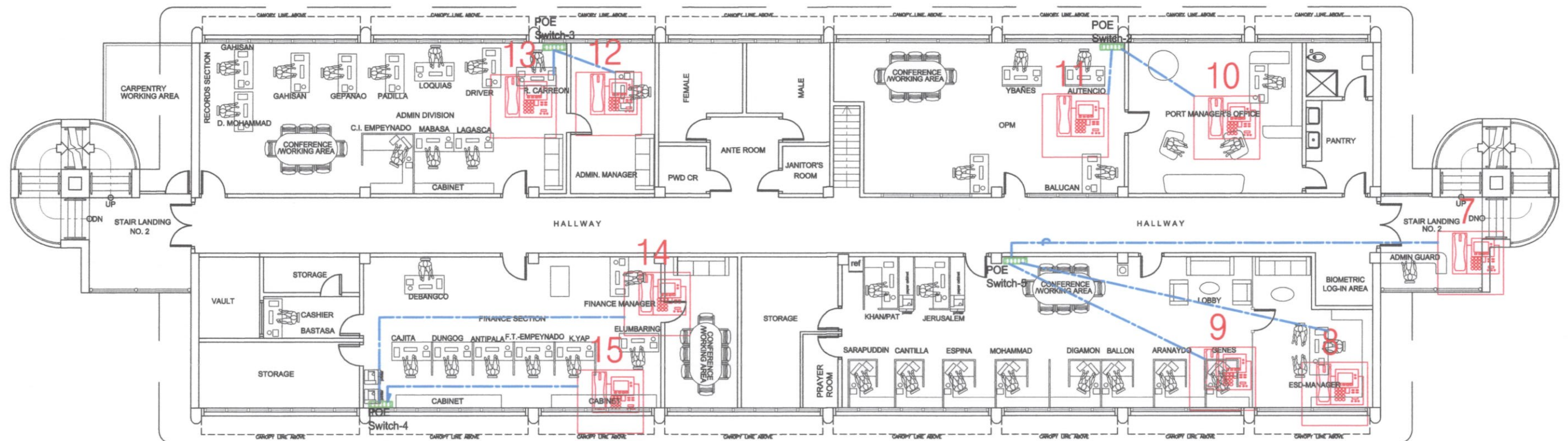
	PROJECT TITLE: Supply, Deliver, Install, Commission, and Program IP PBX Telephone Networking System at PMO-Zamboanga Del Norte				SHEET CONTENTS: IT/Electrical Room Passenger Terminal 1, information counter Malaskit Help Desk 1 @ PTB Entrance BXM Entrance		SCALE: AS SHOWN	
	PREPARED BY:  ENGR. BRYAN E. BALLON ACTING SUPERVISING ENGINEER A	CHECKED BY:  RODERICK Q. GAHUMAN SYSTEM INFORMATION ANALYST	RECOMMENDING APPROVAL BY:  ENGR. ABDURASAD S. HASAN ESD MANAGER		APPROVED BY:  WYETH T. ACAS ASD MANAGER		APPROVED BY:  ENGR. SUBANRIO LIM PORT MANAGER	
	SHEET NO.: 3		SHEET NO.: 7		SHEET NO.: 3		SHEET NO.: 7	
	MAY 11, 2022		MAY 11, 2022		MAY 11, 2022		MAY 11, 2022	

LEGEND: AREA-3

7.	Admin Guard			
8.	Engineering Services Division	9		
10.	Office of the Port Manager	11		
12.	Administrative Division	13		
14.	Finance Services Division	15		

----- LOCAL AREA NETWORK USING CAT6 UTP CABLE

POE NETWORK SWITCH



SECOND FLOOR PLAN
SCALE: 1:100M

PROJECT TITLE:

Supply, Deliver, Install, Commission, and Program IP PBX Telephone Networking System at PMO-Zamboanga Del Norte



PREPARED BY:

ENGR. BRYAN E. BALLON
ACTING SUPERVISING ENGINEER A

CHECKED BY:

RODERICK Q. GAHUMAN
SYSTEM INFORMATION ANALYST

RECOMMENDING APPROVAL BY:

ENGR. ABDURASAD S. HASAN
ESD-MANAGER

APPROVED BY:

ENGR. RUBANRIO KLIM
PORT MANAGER

SHEET CONTENTS:

Admin Guard
Engineering Services Division
Office of the Port Manager
Administrative Division
Finance Services Division

SCALE:

AS SHOWN

SHEET NO.:

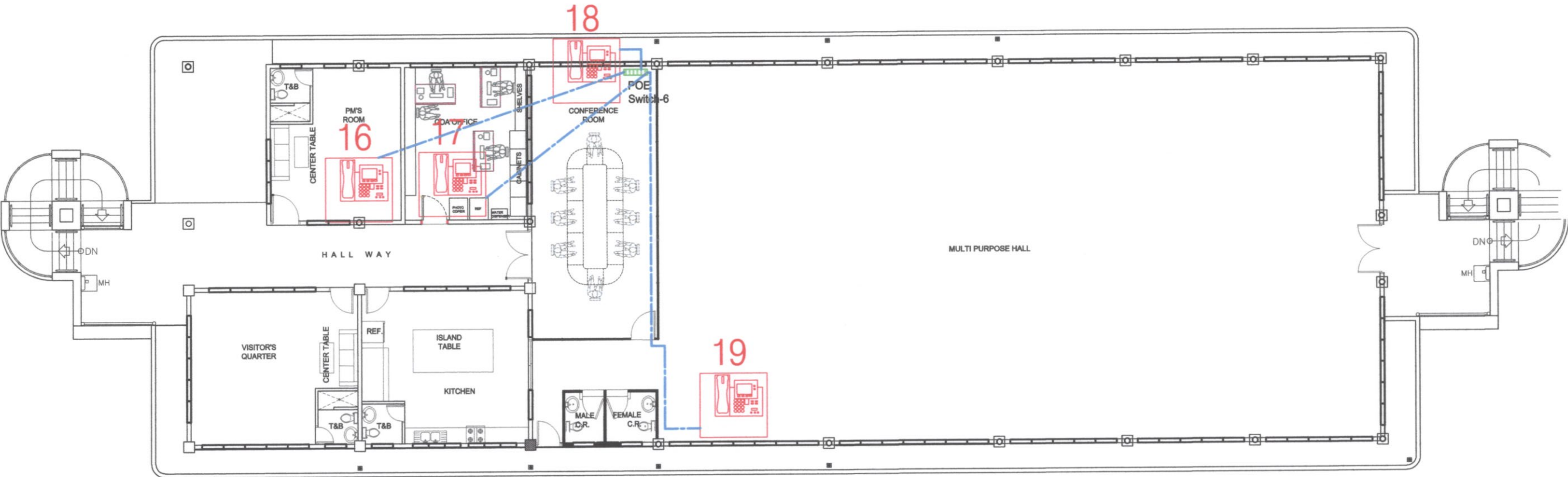
4 7

MAY 11, 2022

LEGEND: AREA-4

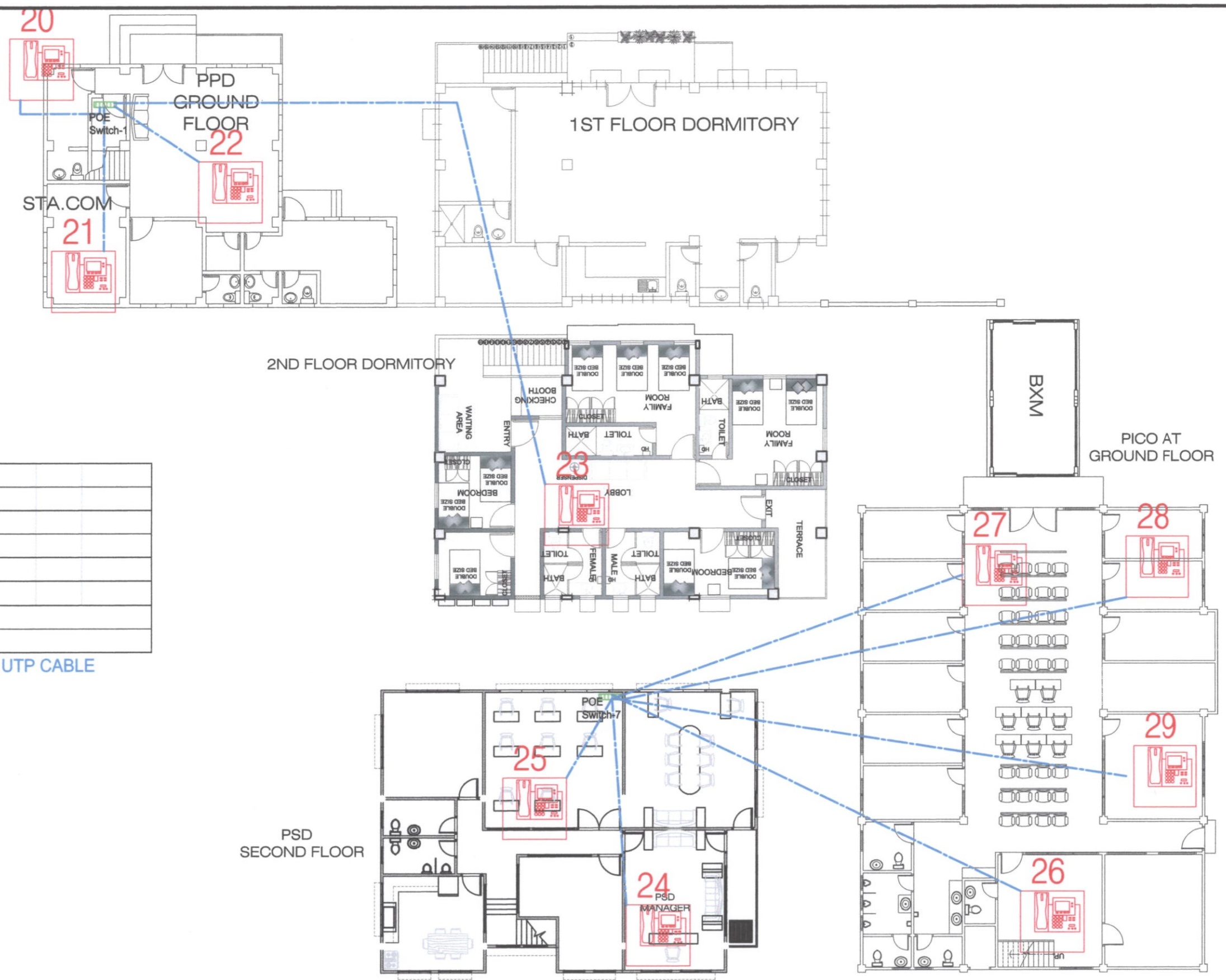
16.	Port Manager's Room (Quarter)
17.	COA Office
18.	Conference Room, 3rd Floor GAD Hall
19.	GAD Hall

----- LOCAL AREA NETWORK USING CAT6 UTP CABLE
POE NETWORK SWITCH



THIRD FLOOR PLAN
SCALE: 1:100M


	PROJECT TITLE: Supply, Deliver, Install, Commission, and Program IP PBX Telephone Networking System at PMO-Zamboanga Del Norte				SHEET CONTENTS: Port Manager's Room (Quarter) COA Office Conference Room, 3rd Floor GAD Hall GAD Hall		SCALE: AS SHOWN	
	PREPARED BY: ENGR. BRYAN E. BAILON ACTING SUPERVISING ENGINEER A		CHECKED BY: RODERICK Q. CAHUMAN SYSTEM INFORMATION ANALYST		RECOMMENDING APPROVAL BY: ENGR. ABDURASAD S. HASAN ESD MANAGER		APPROVED BY: ENGR. SUBANRIO KLIM PORT MANAGER	
							SHEET NO.: 5 7	
							MAY 11, 2022	



LEGEND: AREA-5

20. Malaskit Help Desk 2 Near PPD	
21. Port Police Division	22
23. Dormitory for Transient Passengers	
24. Port Services Division	25
26. Harbor Office	
27. Port Intergrated Clearing Office	
28. Cashier	
29. Assessment	

LOCAL AREA NETWORK USING CAT6 UTP CABLE
 POE NETWORK SWITCH



PHILIPPINE PORTS AUTHORITY

PROJECT TITLE:

Supply, Deliver, Install, Commission, and Program IP PBX Telephone Networking System at PMO-Zamboanga Del Norte

SHEET CONTENTS:

Malaskit Help Desk 2 Near PPD

Port Police Division

Dormitory for Transient Passengers

Port Services Division

Harbor Office

Port Intergrated Clearing Office

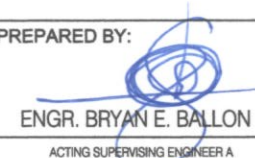
SCALE:

AS SHOWN

SHEET NO.: 6 7

MAY 11, 2022

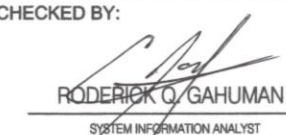
PREPARED BY:



ENGR. BRYAN E. BALLON

ACTING SUPERVISING ENGINEER A


CHECKED BY:



RODERICK O. GAHUMAN

SYSTEM INFORMATION ANALYST


RECOMMENDING APPROVAL BY:



ENGR. ABDURASAD S. HASAN

ESD MANAGER


APPROVED BY:



WYETH T. ACAS

ASD MANAGER

APPROVED BY:



ENGR. SUBANRICIO. LIM

PORT MANAGER

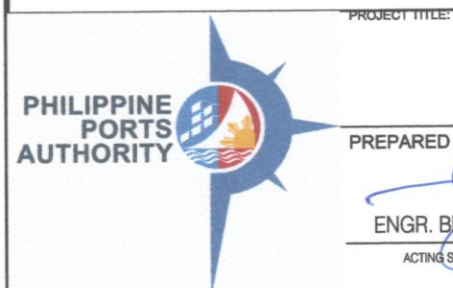
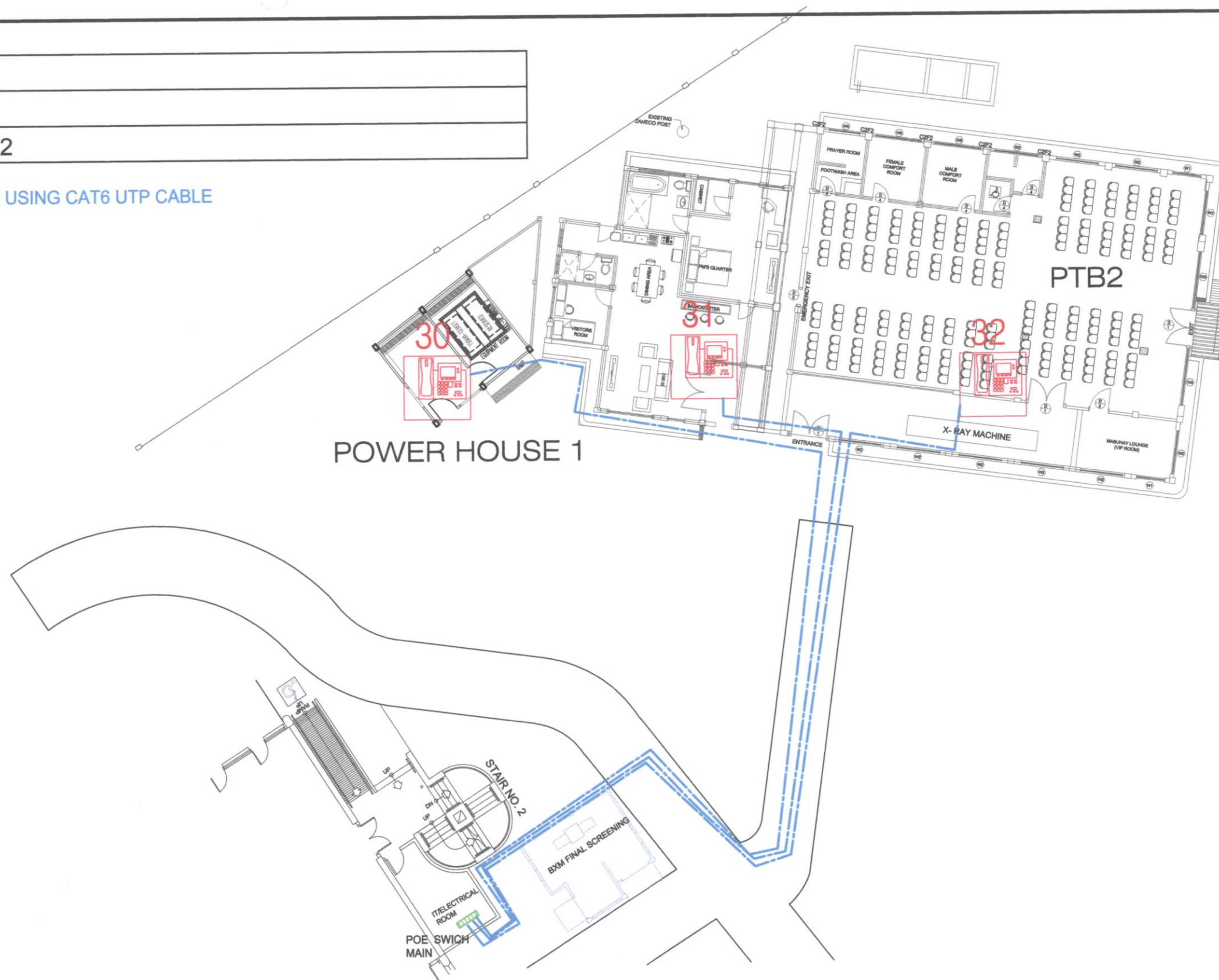
Cashier

Assessment

LEGEND: AREA-6

- | | |
|-----|----------------------|
| 30. | Powerhouse 1 |
| 31. | PM's Quarter |
| 32. | Passenger Terminal 2 |

LOCAL AREA NETWORK USING CAT6 UTP CABLE
POE NETWORK SWITCH



PROJECT TITLE:
Supply, Deliver, Install, Commission, and Program IP PBX Telephone Networking System at PMO-Zamboanga Del Norte

PREPARED BY:
ENGR. BRYAN E. BALLON
ACTING SUPERVISING ENGINEER A

CHECKED BY:
RODERICK Q. GAHUMAN
SYSTEM INFORMATION ANALYST

RECOMMENDING APPROVAL BY:
ENGR. ABDURASAD S. HASAN
ESD MANAGER

APPROVED BY:
WYETH T. ACAS
ASD MANAGER

APPROVED BY:
ENGR. SUBANRIO I. LIM
PORT MANAGER

SHEET CONTENTS:
Powerhouse 1
PM's Quarter
Passenger Terminal 2

SCALE:
AS SHOWN

SHEET NO.:
7

MAY 11, 2022