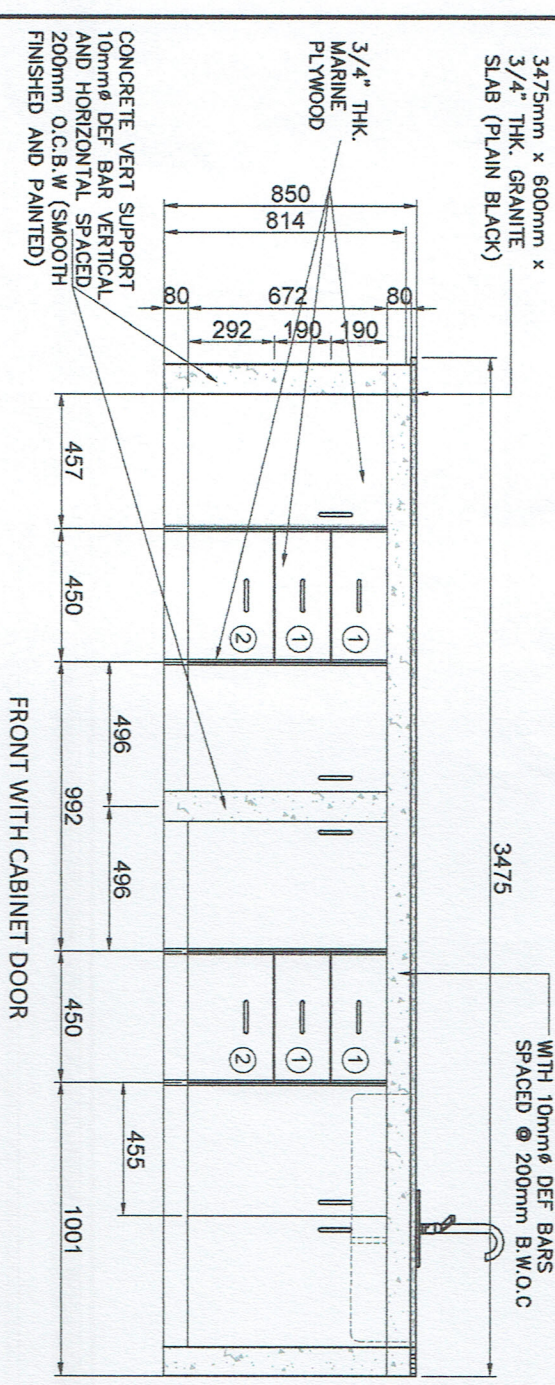
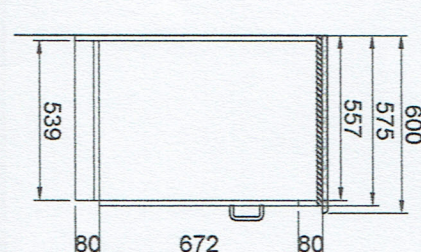


PROVIDE 844mmx474mmx220mm DOUBLE BOWL STAINLESS KITCHEN SINK WITH FAUCET AND COMPLETE SET OF ACCESSORIES

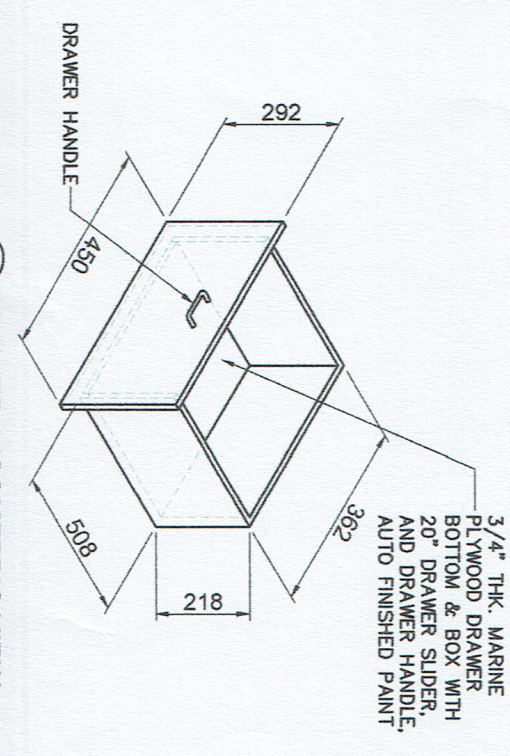
NOTE:
1. MARINE PLYWOOD TO BE PAINTED (1 COAT PRIMER AND 2 COATS BIOFRESH ACRYLIC ODORLESS, ANTIMICROBIAL LATEX PAINT(GLOSS), INCLUDING SURFACE PREPARATION)



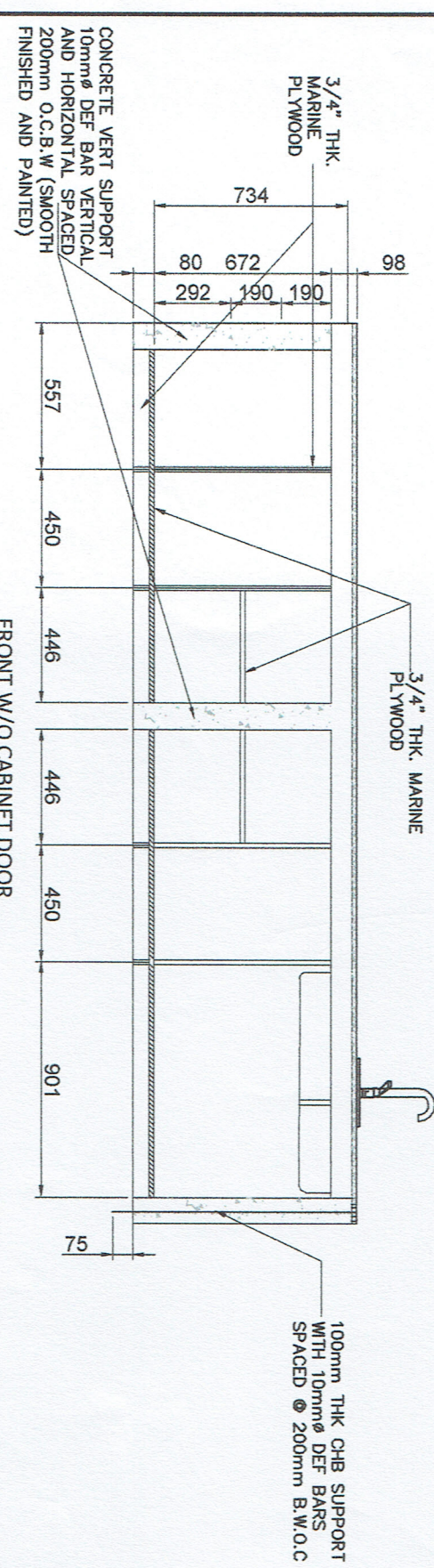
FRONT WITH CABINET DOOR



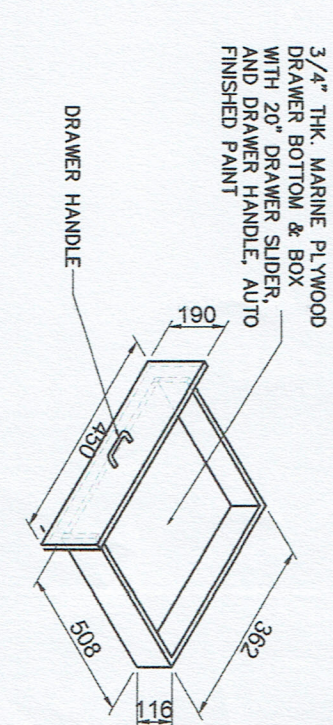
SIDE



DRAWER 2 ISOMETRIC VIEW
NOT TO SCALE



FRONT W/O CABINET DOOR



DRAWER 1 ISOMETRIC VIEW
NOT TO SCALE

KITCHEN COUNTER DETAIL
SCALE 1:25

PM's OLD QUARTER'S KITCHEN COUNTER DETAIL
SCALE 1:25

	PROJECT TITLE REPAIR OF PM's OLD QUARTERS KITCHEN COUNTER LOCATION PORT OF GENERAL SANTOS, MAKAR WHARF, GENERAL SANTOS CITY	PREPARED BY: JOSE CARLO I. SORIANO ENGINEERING ASSISTANT A	CHECKED BY: CHARMINE DUJANE L. MANTOYA SUPERVISING ENGINEER A	REVIEWED BY: MARIA VIVIEN M. TANCO PRINCIPAL ENGINEER A	RECOMMENDING APPROVAL: JAMES D. LEE ESP MANAGER	APPROVED BY: ATTY. CESAR M. DAVA PORT MANAGER	SHEET CONTENT: 1. PM's OLD QUARTER'S KITCHEN SINK DETAIL	DATE: 2/2
--	--	---	--	--	--	--	--	---------------------