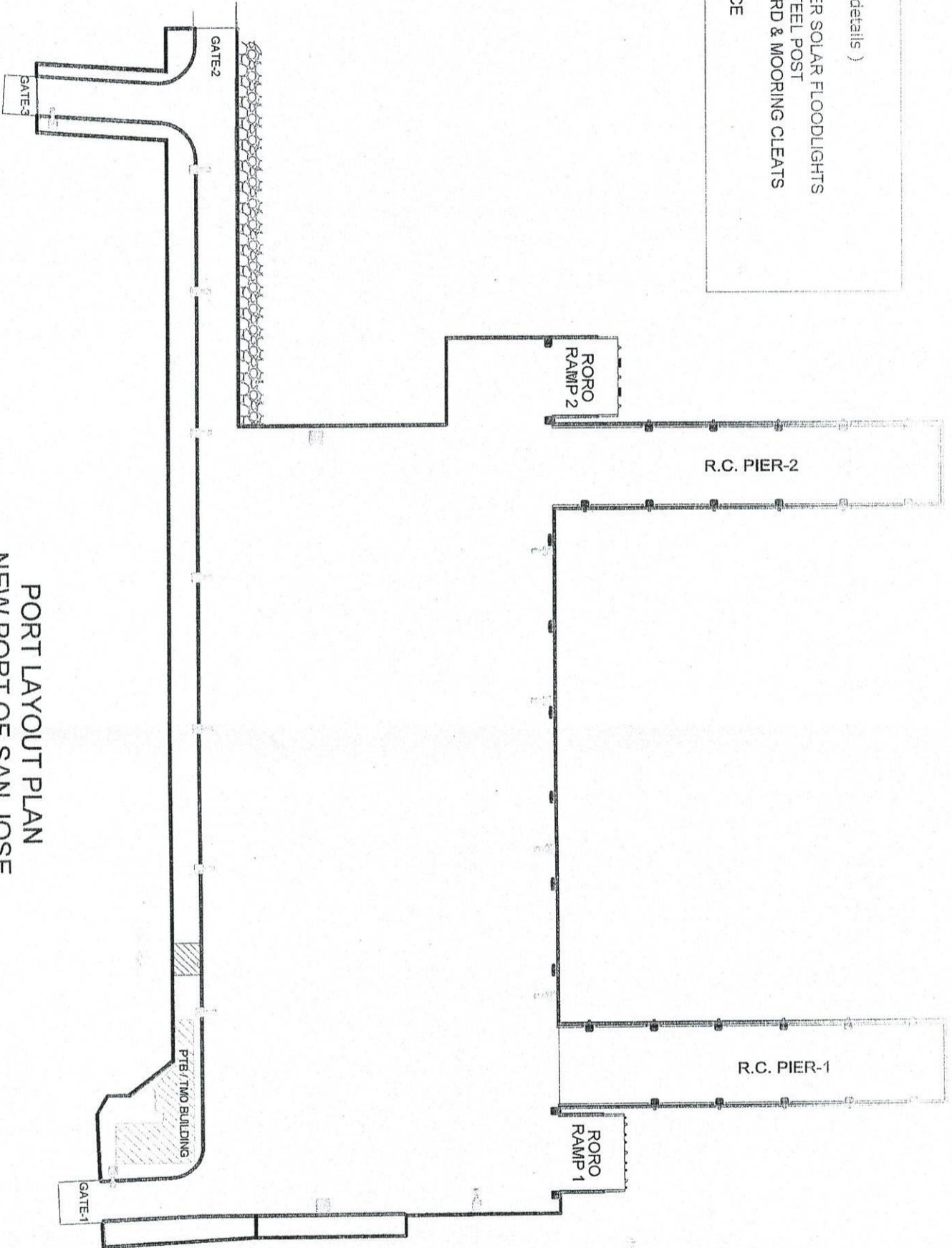




## VARIOUS REPAINTING WORKS

PORT OF SAN JOSE, OCCIDENTAL MINDORO

- NOTE:  
TO BE RAPPAINTED ( see details )
1. PTB / TMO
  2. HIGHMAST TOWER SOLAR FLOODLIGHTS & SINGLE ARM STEEL POST
  3. MOORING BOLLARD & MOORING CLEATS
  4. RC. CURB
  5. PERIMETER FENCE



PORT LAYOUT PLAN  
NEW PORT OF SAN JOSE  
OCCIDENTAL MINDORO

SCALE 1:750M.

PROJECT TITLE

VARIOUS REPAIRING WORKS

PORT OF SAN JOSE, OCCIDENTAL MINDORO

DESIGNED BY

CHECKED BY

APPROVED BY

DATE

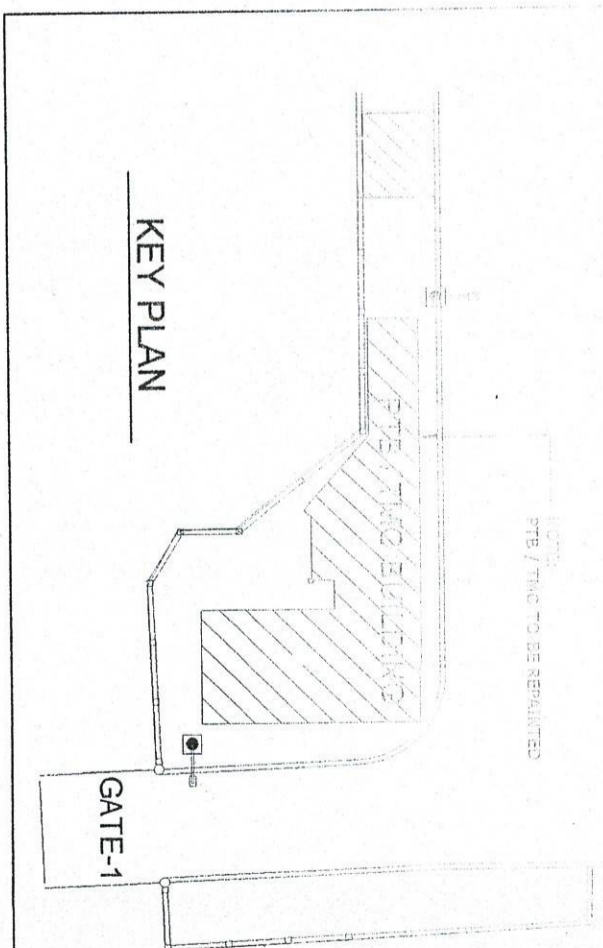
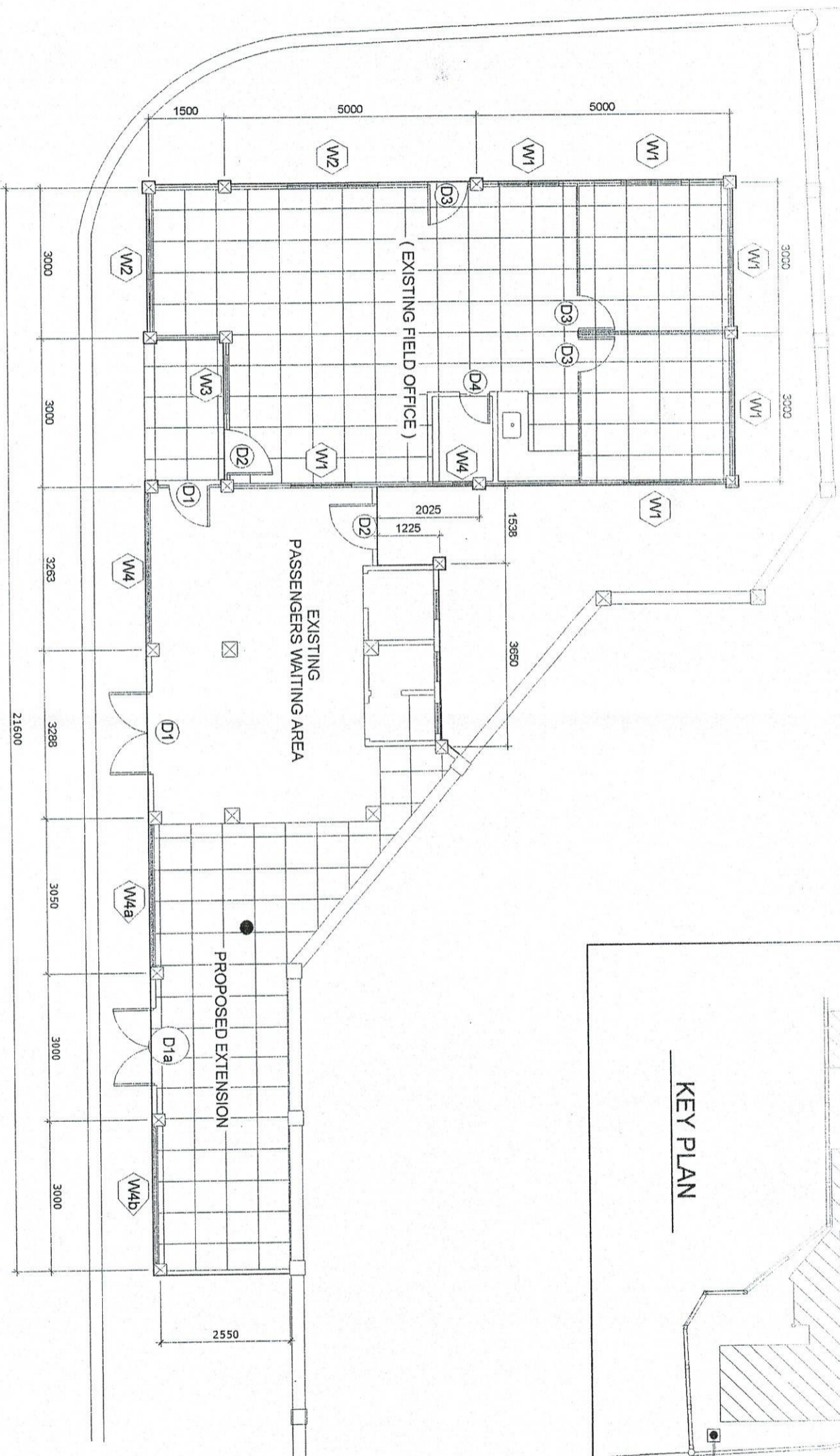
SHEET CONTENTS

SCALE

AS SHOWN

SHEET NO.

10 FEBRUARY 2003



PTB / TMO BUILDING FLOOR PLAN  
SCALE 1:100 M.

NOTE:  
THE COLOR OF THE THEME SHOULD BE  
THE SAME AS THE PORT OPERATION  
BUILDING IN THE PORT OF CALAPAN

PROJECT TITLE

VARIOUS REPAIRING WORKS  
PORT OF SAN JOSE OCCIDENTAL MINDORO

PREPARED BY

SUBMITTED BY

CHECKED / REVIEWED BY

DESIGN / DRAWING NO.

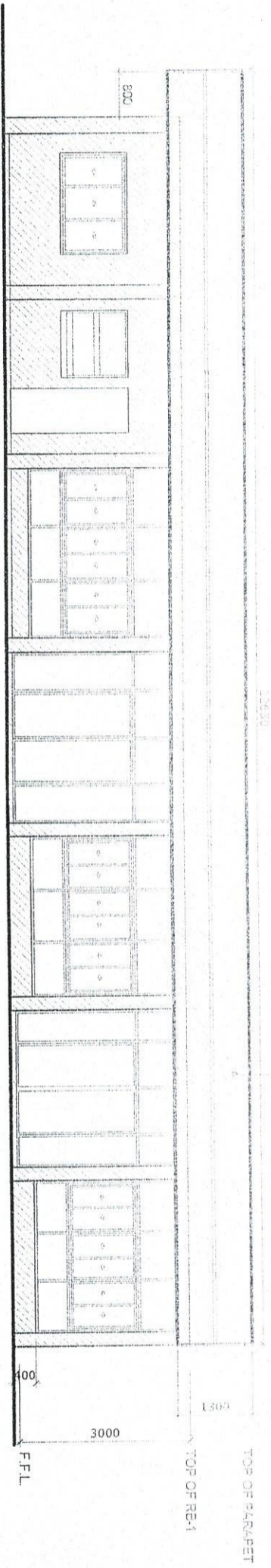
APPROVED BY

SHEET NUMBER

SCALE AS SHOWN

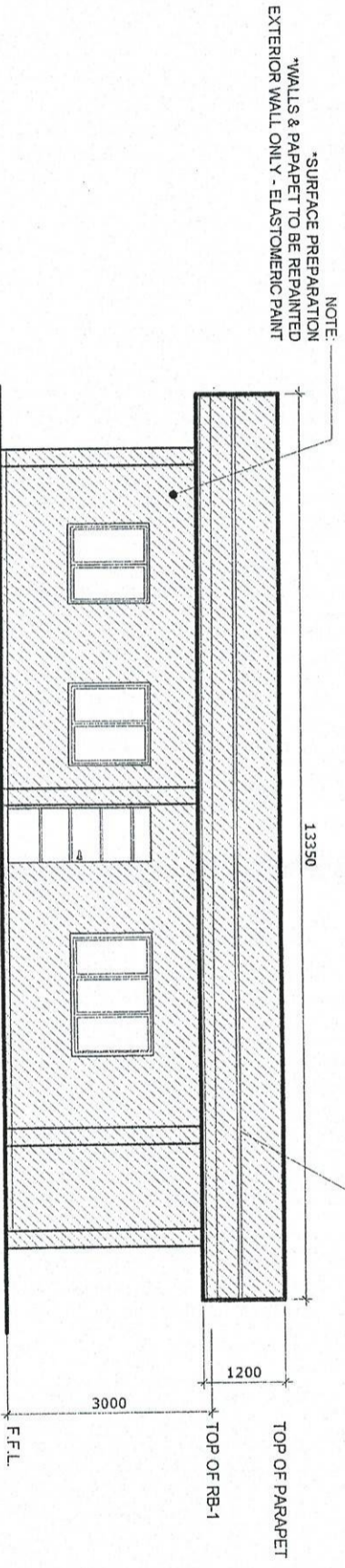
SHEET NO. 2 of 10

DATE: FEBRUARY 2015

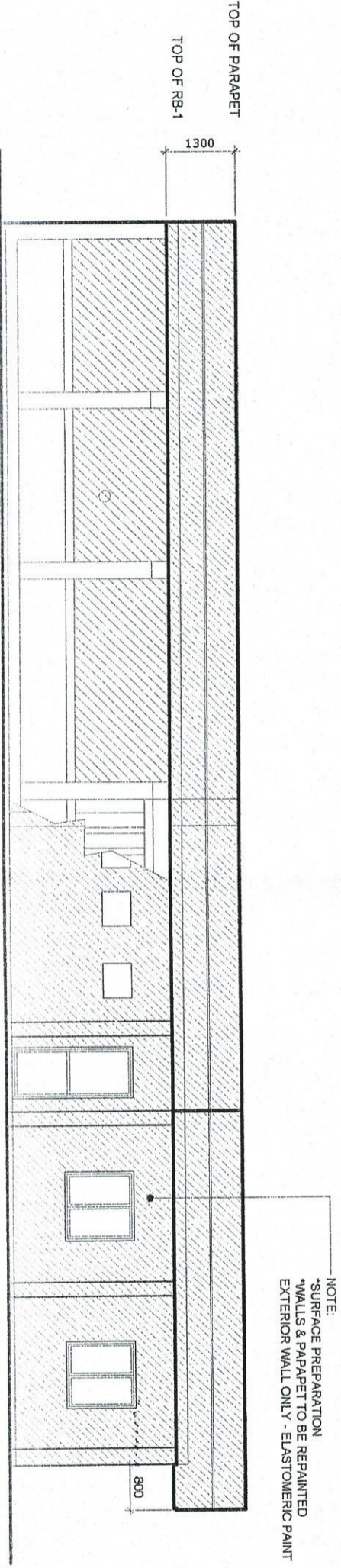


FRONT ELEVATION  
SCALE 1:100M

NOTE:  
THE COLOR OF THE THEME SHOULD BE  
THE SAME AS THE PORT OPERATION  
BUILDING IN THE PORT OF CALAPAN



LEFT ELEVATION  
SCALE 1:100M



REAR ELEVATION  
SCALE 1:100M

PROJECT TITLE: VARIOUS REPAIRING WORKS  
PORT OF CALAPAN OCCIDENTAL INFILTRATION

SHEET CONTENTS: AS SHOWN

PREPARED BY: ENGINEER

SUBMITTED BY: ENGINEER

CHECKED BY: ENGINEER

REVISIONS APPROVALS

DATE: 10 FEBRUARY 2003

DATE: 10 FEBRUARY 2003

DATE: 10 FEBRUARY 2003

PROJECT TITLE

VARIOUS REPAIRING WORKS  
PORT OF SAN JOSE, COCIDENTAL MARINERO

SHEET COVERING

AS SHOWN

DESIGNED BY

SUBMITTED BY

REVIEWED BY

APPROVED BY

REVISION

DATE

Dr. J. M. H.

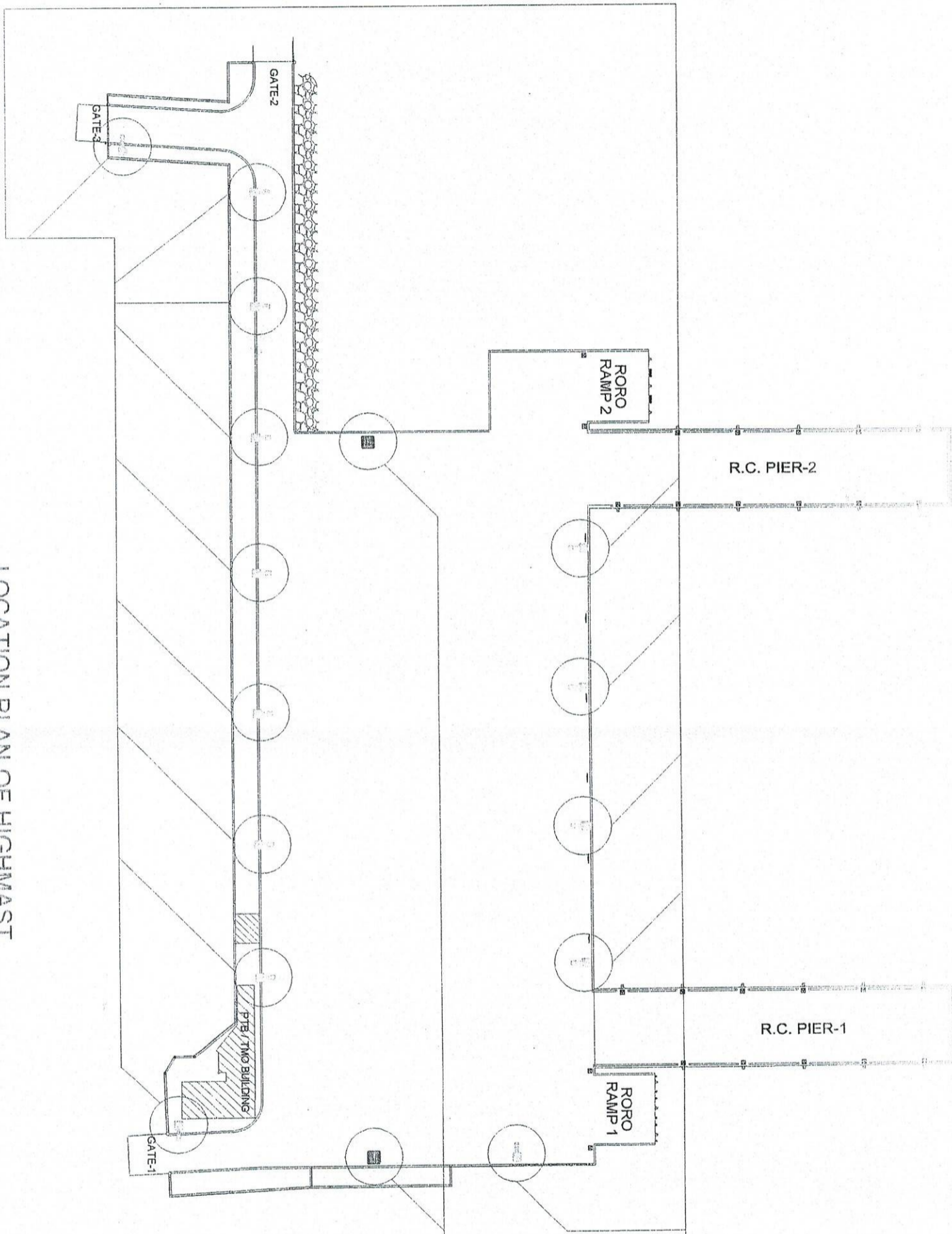
Assistant Port Engineer

Chief Engineer

Chief Engineer

Chief Engineer

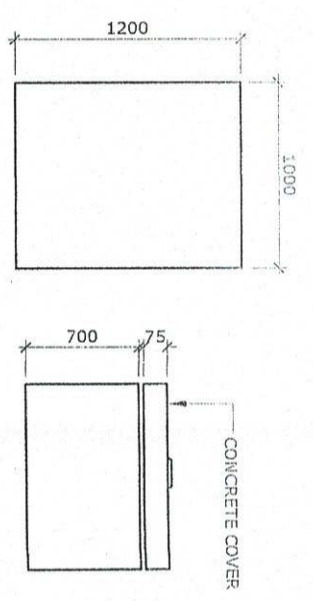
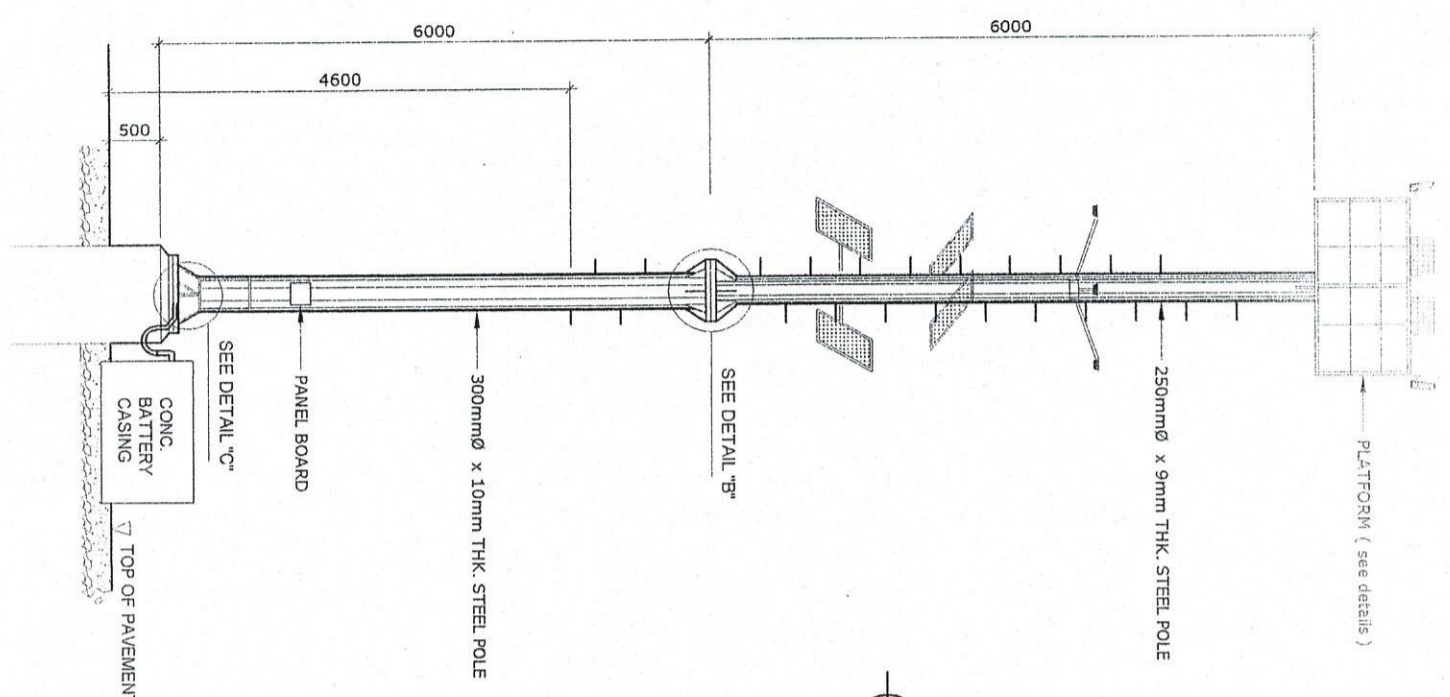
15 FEBRUARY 2000



LOCATION PLAN OF HIGHMAST  
TOWER & SINGLE ARM STEEL POST  
SCALE 1:750 M.

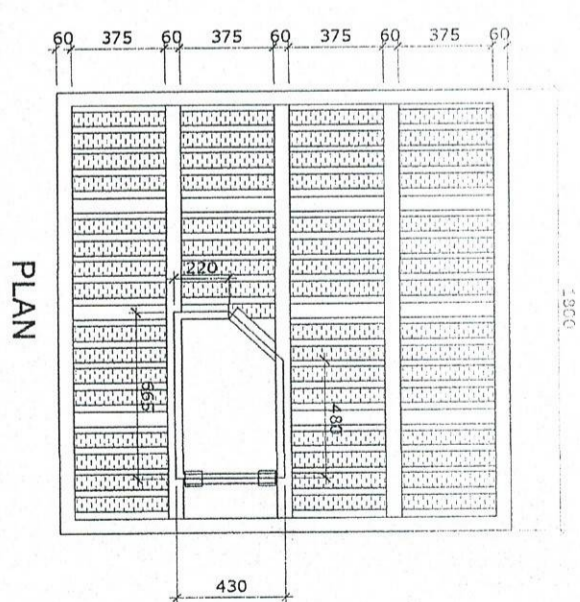
NOTE:  
14 sets - SINGLE ARM STEEL POST  
TO BE REPAINTED

NOTE:  
2 sets - HIGHMAST TOWER SOLAR  
POWER FLOODLIGHTS TO BE REPAINTED

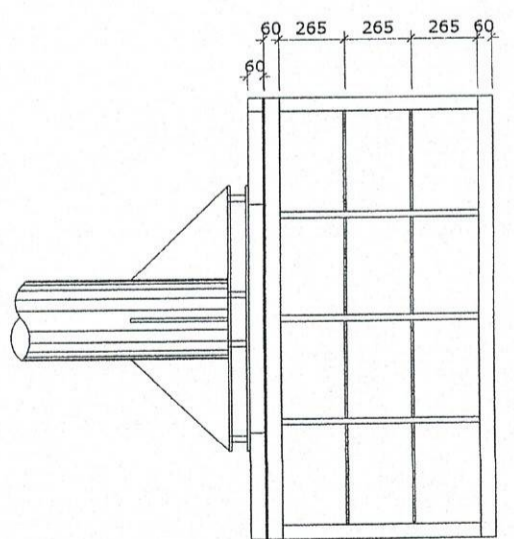


**TYPICAL DETAIL OF  
CONCRETE BATTERY CASING**  
SCALE 1:50 M.

NOTE:  
HIGHMAST TOWER & SINGLE ARM STEEL POST TO BE  
REPAINTED INCLUDING PLATFORM, FRAME OF SOLAR  
PANEL AND CONC. BATTERY CASING  
\*REPAINTING WORKS ON STEEL  
1. SURFACE PREPARATION  
2. USE RUST CONVERTER  
3. USE AUTOMOTIVE PAINT  
\*REPAINTING WORKS ON CONC. BATTERY  
CASING, CONC. PEDestal & HANDHOLE  
1. SURFACE PREPARATION  
2. USE REFLECTORIZED PAINT



**PLAN**



**TYP. ELEVATION**

**PLATFORM FRAME DETAIL**  
SCALE 1:30 M.

PROJECT TITLE: VARIOUS REPAIRING WORKS  
PORT OF SAN JOSE OCCIDENTAL LINDERO

SHEET CONTENTS: SCALE AS SHOWN  
SHEET NO. 8 OF 10

Drawn by: J. J. J.

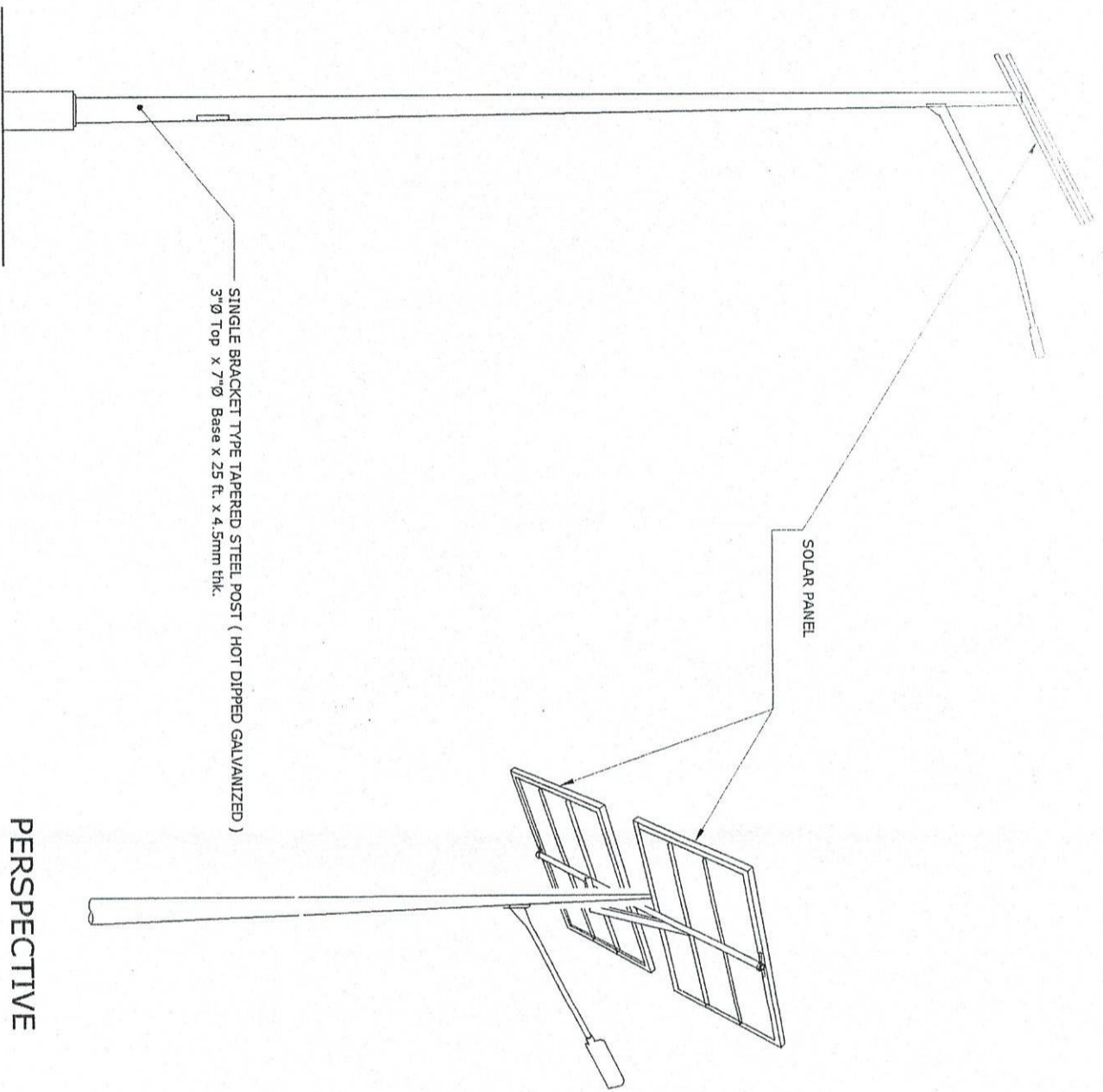
Checked by: J. J. J.

Approved by: J. J. J.

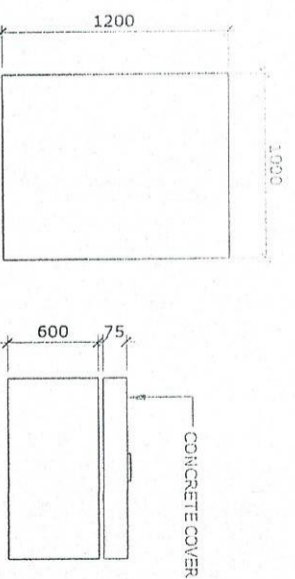
Design Engineer: J. J. J.

Project Manager: J. J. J.

10 FEBRUARY 2024



PERSPECTIVE



PLAN

ELEVATION

TYPICAL DETAIL OF  
CONCRETE BATTERY CASING

SCALE

1:30 M.

SINGLE BRACKET TYPE TAPERED STEEL POST (HOT DIPPED GALVANIZED)  
3"Ø Top x 7"Ø Base x 25 ft. x 4.5mm thk.

- NOTE:  
SINGLE ARM STEEL POST & BATTERY CASING  
\*REPAINTING WORKS ON STEEL  
1. SURFACE PREPARATION  
2. USE RUST CONVERTER  
3. USE AUTOMOTIVE PAINT  
\*REPAINTING WORKS ON  
CONC. BATTERY CASING & PEDESTAL  
(BLACK & YELLOW STRIPE)  
1. SURFACE PREPARATION  
2. USE REFLECTORIZED PAINT



DETAIL OF SINGLE  
ARM STEEL POST

SCALE

NTS.

PROJECT TITLE:

VARIOUS REPAINTING WORKS  
PORT OF SAN JOSE OCCIDENTAL MINDORO

SHEET CONTENTS:

SCALE  
AS SHOWN

DESIGNED BY:

DRAWN BY:

CHECKED BY:

RECOMMENDING OFFICIAL:

DATE:

AS SHOWN

SHEET NO.

0010

DESIGNED BY:

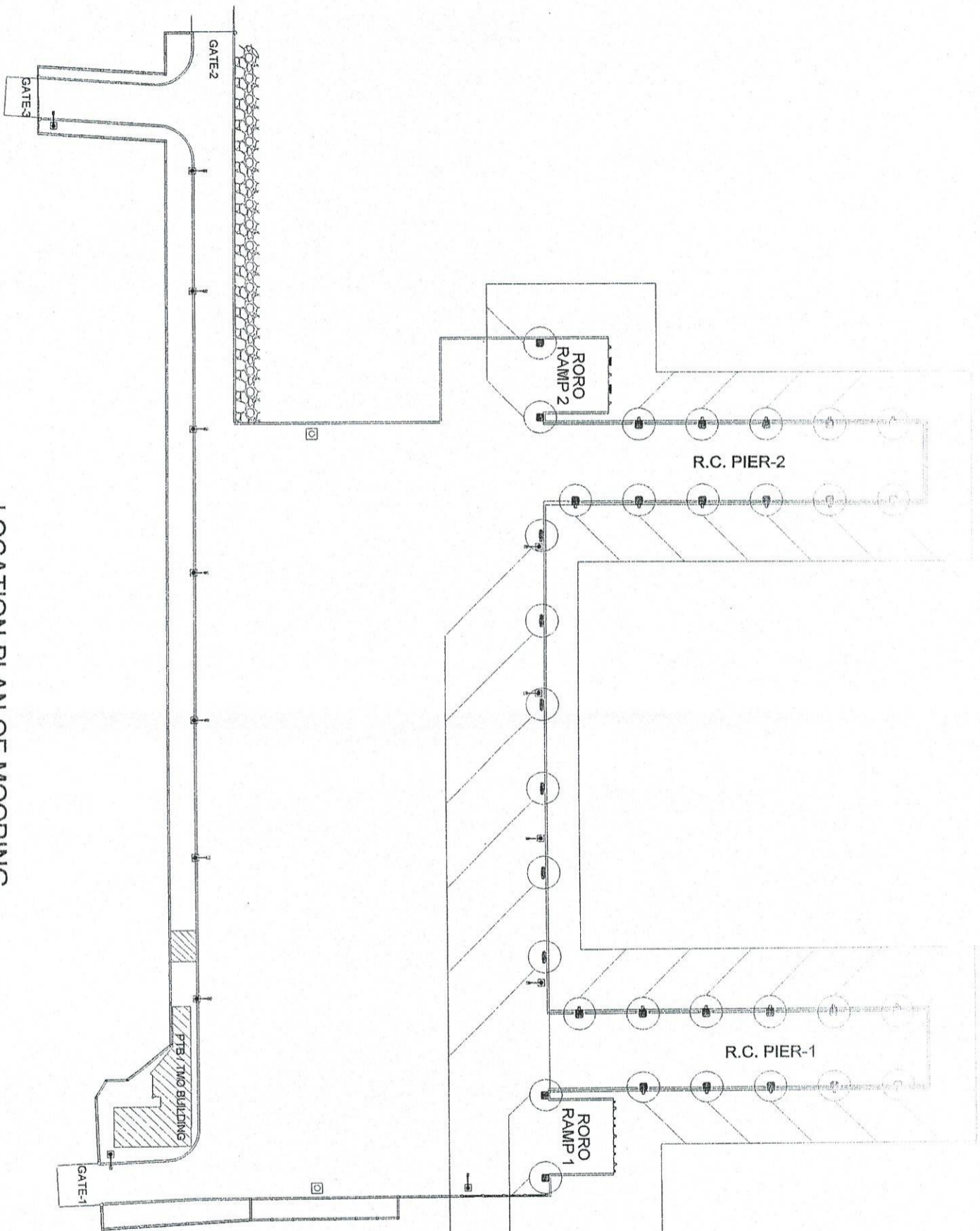
ASSISTANT ENGINEER

WORKING ENGINEER

DIVISION MANAGER

PORT MANAGER

10 FEBRUARY 2020



LOCATION PLAN OF MOORING  
BOLLARD AND MOORING CLEATS  
SCALE 1:750 M.

NOTE:  
6 SETS OF 25TONS MOORING  
CLEATS TO BE REPAINTED

NOTE:  
26 SETS OF 25TONS MOORING  
BOLLARD TO BE REPAINTED

PROJECT TITLE:

VARIOUS REPAIRING WORKS  
PORT OF SAN JOSE, OCCIDENTAL, INDO-CHINA

SHEET CONTENTS:

SCALE  
AS SHOWN

DESIGNED BY:

SUBMITTED BY:

REVIEWED BY:

RECOMMENDED BY:

APPROVED BY:

1:300 M

SHEET NO.

DATE:

10 FEBRUARY 2002

DESIGNED BY:

SUBMITTED BY:

REVIEWED BY:

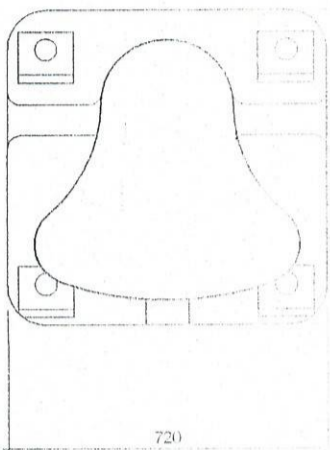
RECOMMENDED BY:

APPROVED BY:

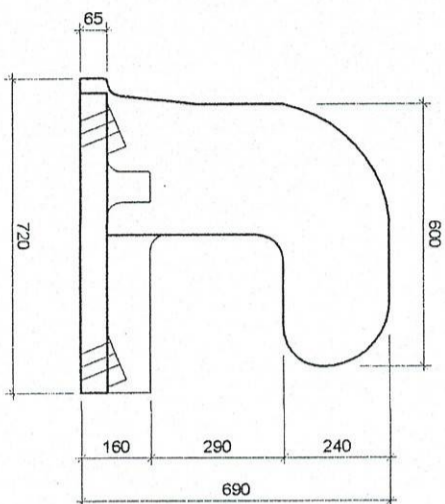
1:300 M

SHEET NO.

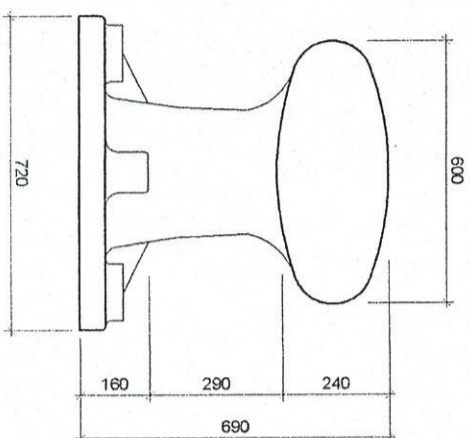
SCALE  
AS SHOWN



PLAN

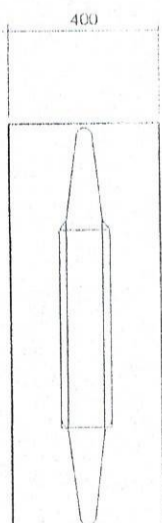


SIDE ELEVATION

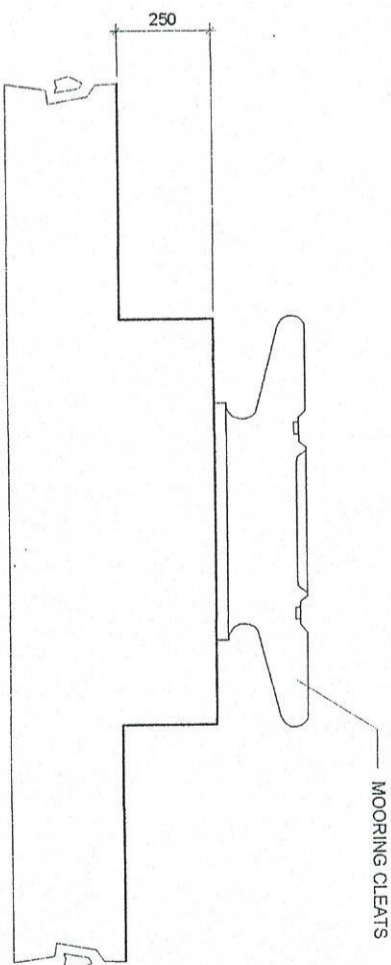


ELEVATION

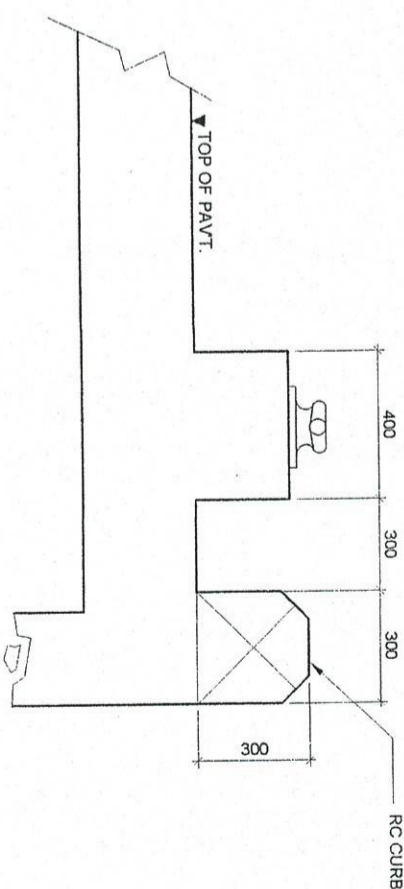
NOTE:  
REPAINTING WORKS ON STEEL  
1. SURFACE PREPARATION  
2. USE RUST CONVERTER  
3. USE AUTOMOTIVE PAINT  
  
REPAINTING WORKS ON CONCRETE  
(BLACK & YELLOW STRIPE)  
1. SURFACE PREPARATION  
2. USE REFLECTORIZED PAINT



PLAN



SIDE ELEVATION



ELEVATION

MOORING CLEATS DETAILS  
SCALE 1:20 M.

DETAIL OF 25 TONS  
MOORING BOLLARD  
SCALE 1:10

PROJECT TITLE:

VARIOUS REPAINTING WORKS  
PORT OF SAN JOSE OCCIDENTAL WINDFARM

DESIGNED BY:

SUBMITTED BY:

CHECKED BY:

REVISIONS:

APPROVED BY:

SHEET COMMENTS:

SCALE AS SHOWN  
SHEET NO. 60100

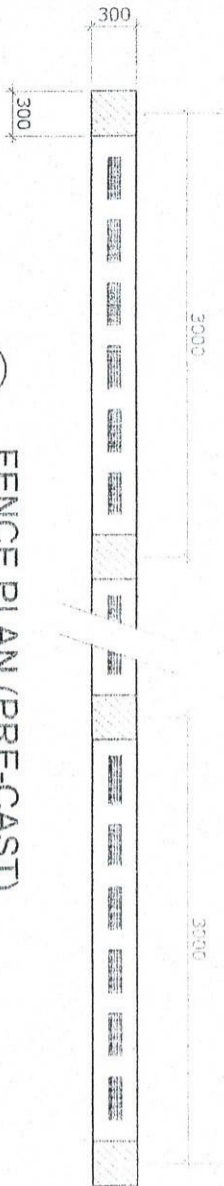
DESIGNED BY: D. J. J. J. J.

DESIGNED BY: D. J. J. J. J.

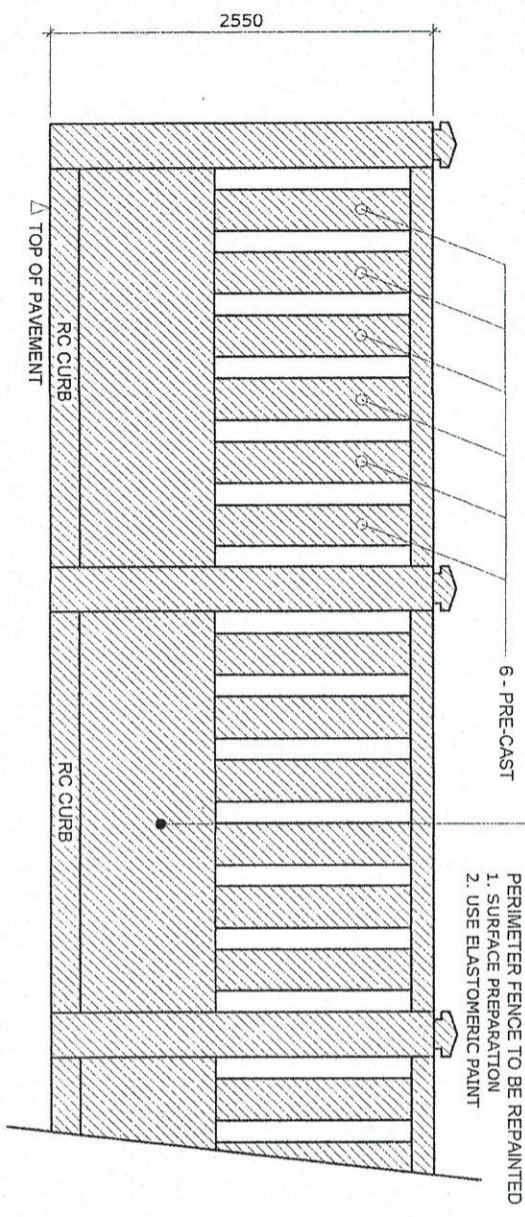
DESIGNED BY: D. J. J. J. J.

DESIGNED BY: D. J. J. J. J.

10 FEBRUARY 2000

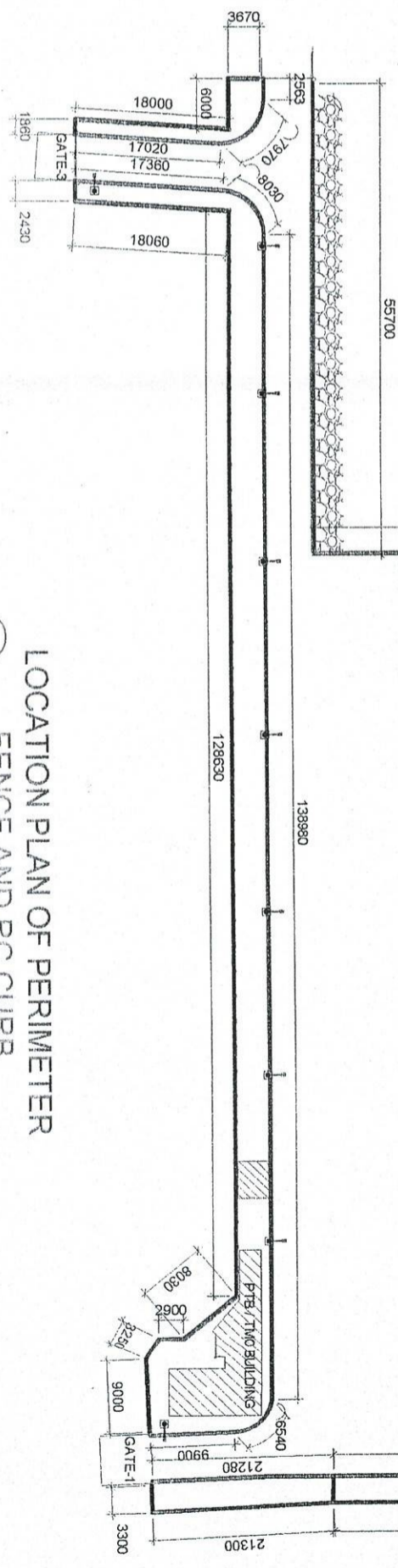


**FENCE PLAN (PRE-CAST)**  
SCALE 1:50 M.



**FENCE ELEV. (PRE-CAST)**  
SCALE 1:50 M.

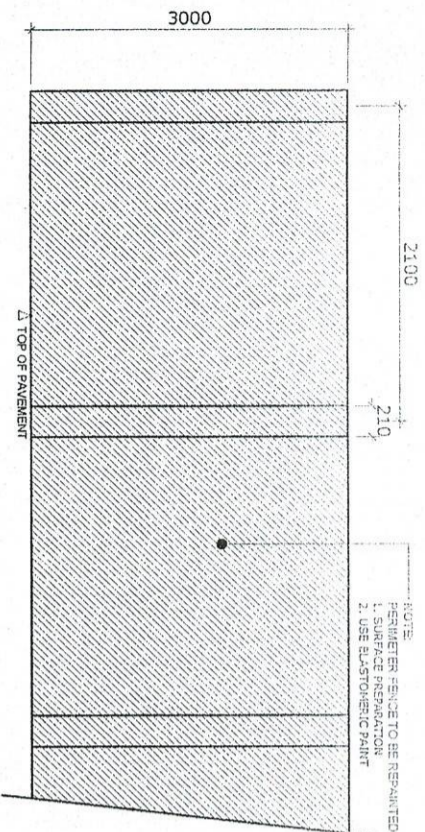
**NOTE:**  
PERIMETER FENCE TO BE REPAINTED ( BOTH SIDES )  
1. SURFACE PREPARATION  
2. USE ELASTOMERIC PAINT  
  
RC CURB TO BE REPAINTED ( BLACK AND YELLOW STRIPE )  
1. SURFACE PREPARATION  
2. USE REFLECTORIZED PAINT



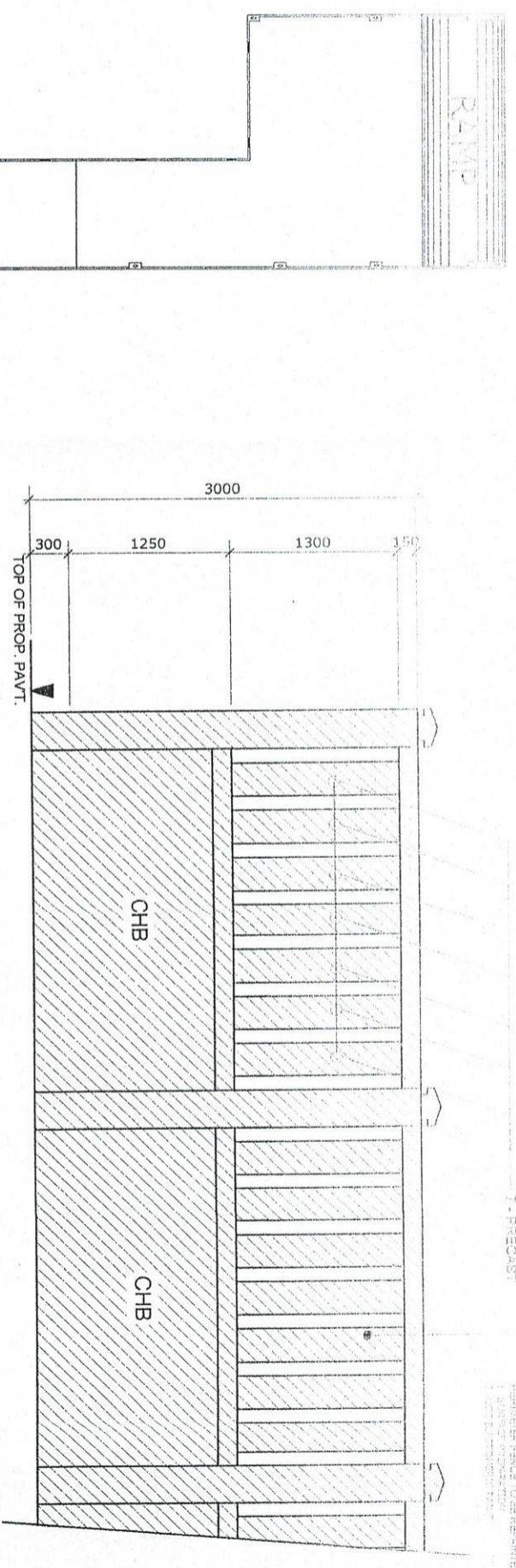
**LOCATION PLAN OF PERIMETER FENCE AND RC CURB**  
SCALE 1:750 M.

PROJECT TITLE: VARIOUS REPAIRING WORKS  
PORT OF SAN JOSE OCCIDENTAL MINDORO

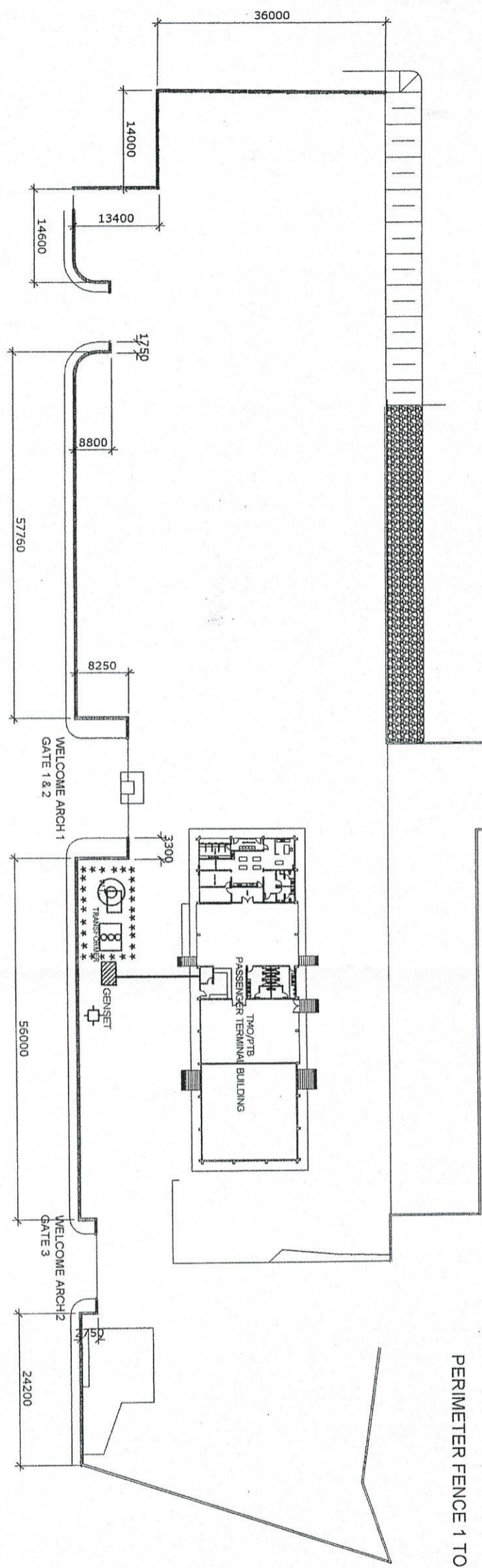
SHEET CONTENTS: AS SHOWN  
SHEET NO: 6 of 10  
DATE: 10 FEBRUARY 2023



PERIMETER FENCE 2 ELEV.  
SCALE 1:30 M.



PERIMETER FENCE 1 TO BE PAINT (see details)



LOCATION PLAN OF PERIMETER  
FENCE AND RC CURB  
OLD PORT OF SAN JOSE  
SCALE 1:1000 M.

NOTE:  
PERIMETER FENCE TO BE REPAINTED  
1. SURFACE PREPARATION  
2. USE ELASTOMERIC PAINT  
- BOTH SIDES  
- ONE SIDE ONLY (inside port premises)

PROJECT TITLE

VARIOUS REPAIRS AND IMPROVEMENTS  
PORT OF SAN JOSE OCCIDENTAL MINDORO

DESIGNED BY

SUBMITTED BY

REVIEWED BY

APPROVED BY

AS SHOWN

SHEET NO.

PROJECT NO.

ASSIGNED FOR ENGINEER

DATE OF ISSUE

DATE OF MODIFICATION

DATE OF REVIEW

DATE OF APPROVAL