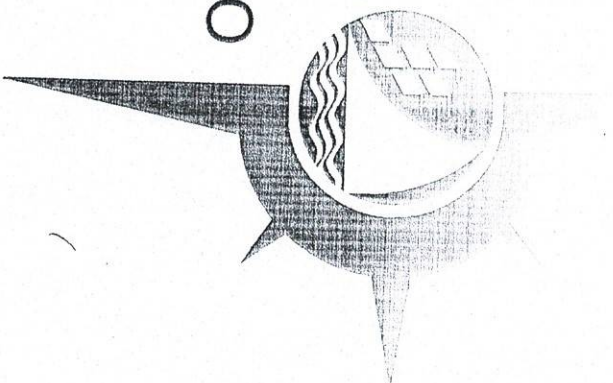


PHILIPPINE  
PORTS  
AUTHORITY

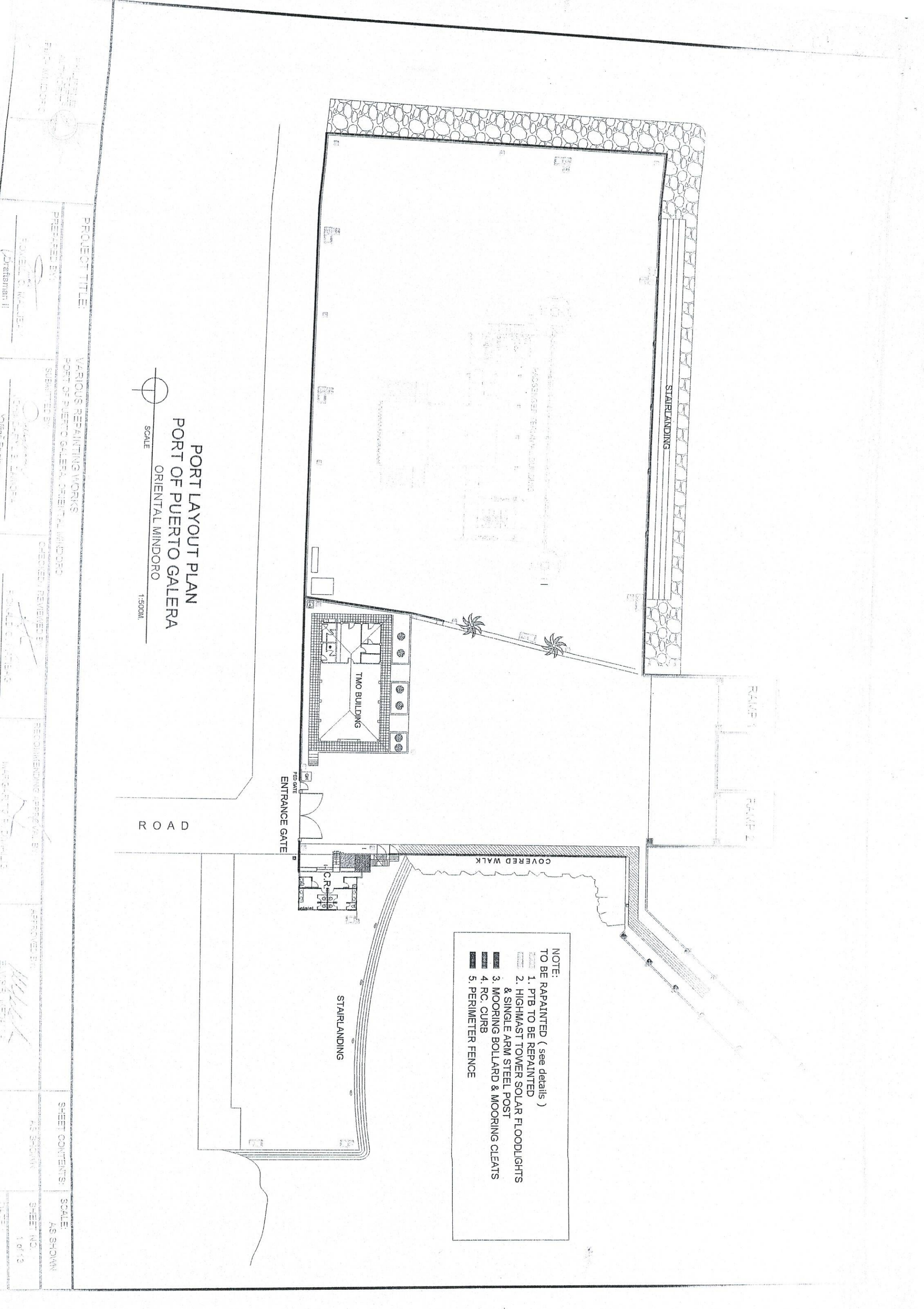


PMO- MINDORO

## VARIOUS REPAINTING WORKS

PORT OF PUERTO GALERA, ORIENTAL MINDORO

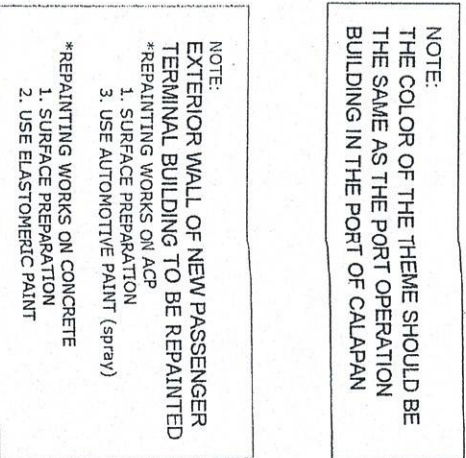




- NOTE:  
TO BE RAPAIINTED ( see details )
- 1. PTB TO BE RAPAIINTED
  - 2. HIGHMAST TOWER SOLAR FLOODLIGHTS & SINGLE ARM STEEL POST
  - 3. MOORING BOLLARD & MOORING CLEATS
  - 4. RC. CURB
  - 5. PERIMETER FENCE

PROJECT TITLE: VARIOUS REPAINTING WORKS PORT OF PUERTO GALERA, ORIENTAL MINDORO		SHEET CONTENTS: AS SHOWN	
PREPARED BY: DONALD C. MALLER (Draftsman II)	SUBMITTED BY: DONALD C. MALLER Chief Engineer	APPROVED BY: [Signature] Chief Engineer	SCALE: AS SHOWN
CHECKED / REVIEWED BY: DONALD C. MALLER Acting Principal Engineer A		RECOMMENDING OFFICIAL: [Signature] [Title]	SHEET NO. 1 of 10





NOTE:  
THE COLOR OF THE THEME SHOULD BE  
THE SAME AS THE PORT OPERATION  
BUILDING IN THE PORT OF CALAPAN

NOTE:  
EXTERIOR WALL OF NEW PASSENGER  
TERMINAL BUILDING TO BE REPAINTED

- \*REPAINTING WORKS ON ACP
- 1. SURFACE PREPARATION
- 3. USE AUTOMOTIVE PAINT (spray)

\*REPAINTING WORKS ON CONCRETE

- 1. SURFACE PREPARATION
- 2. USE ELASTOMERIC PAINT

PTB GROUND FLOOR PLAN

SCALE 1:160 M.

SCALE:

Draftsman :

SECRET

Office Engineer

10

Acting Principal Engineer

(1)

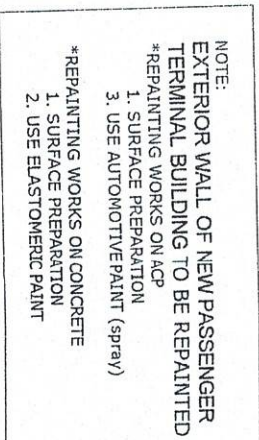
2021/1/29/14:22

2001

五五〇

5 JAN 2023

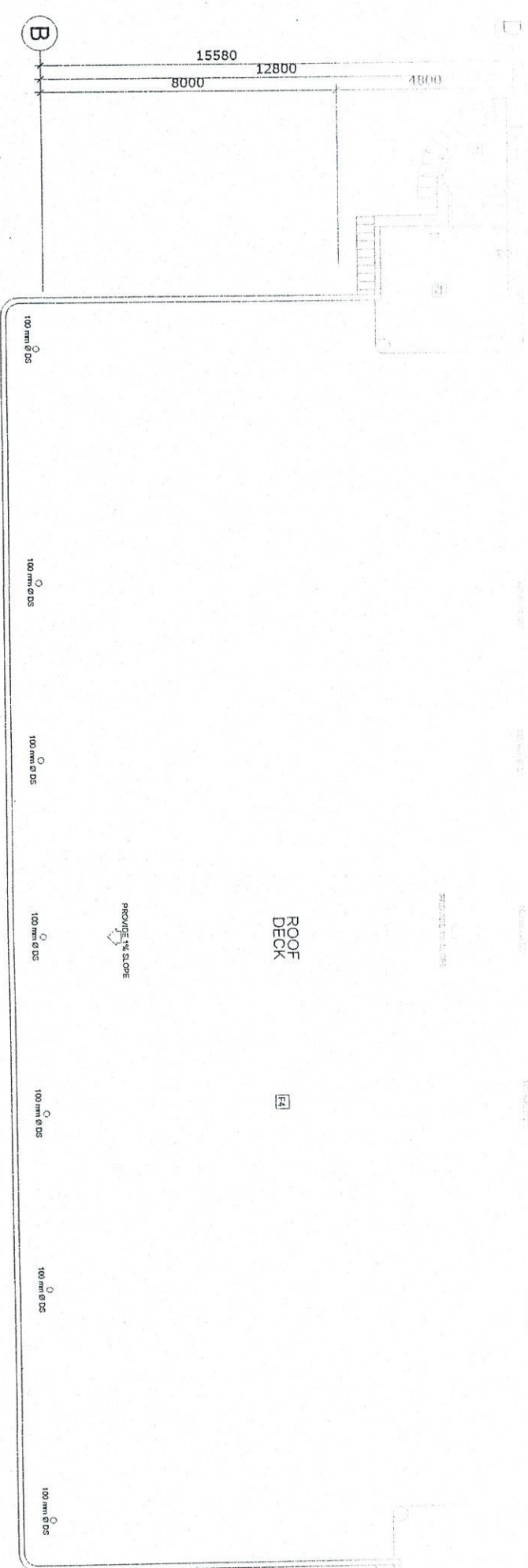




PTB SECOND FLOOR PLAN  
SCALE 1:160 M.

10 FEBRUARY, 2023

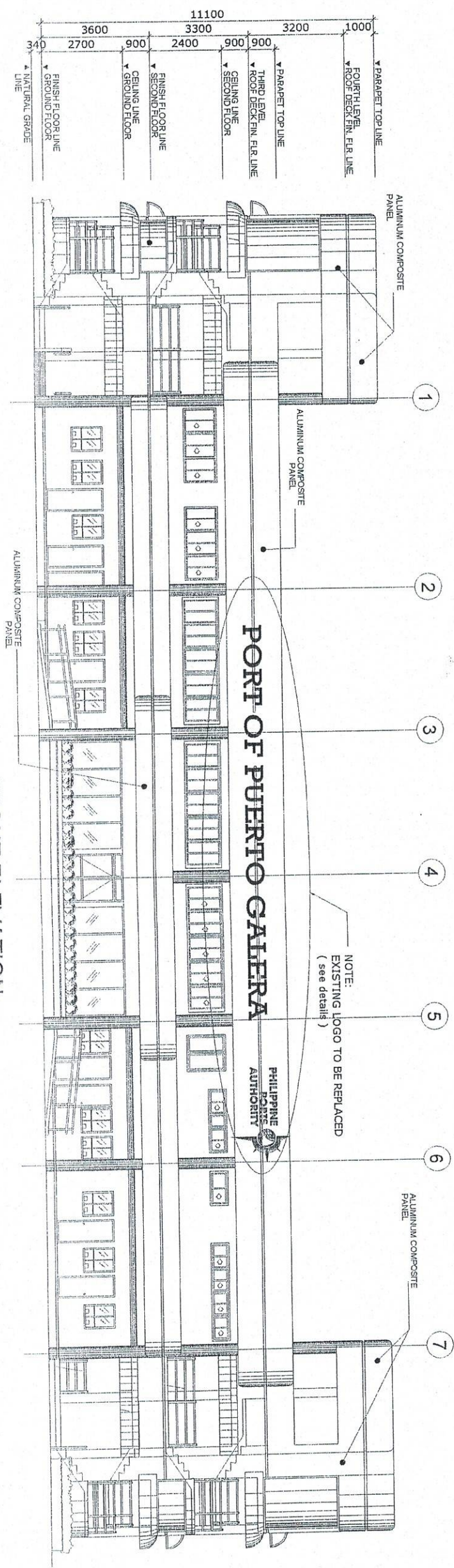




NOTE:  
THE COLOR OF THE THEME SHOULD BE THE SAME AS THE PORT OPERATION BUILDING IN THE PORT OF CALAPAN

NOTE:  
EXTERIOR WALL OF NEW PASSENGER TERMINAL BUILDING TO BE REPAINTED  
\*REPAINTING WORKS ON ACP  
1. SURFACE PREPARATION  
3. USE AUTOMOTIVE PAINT (spray)  
\*REPAINTING WORKS ON CONCRETE  
1. SURFACE PREPARATION  
2. USE ELASTOMERIC PAINT

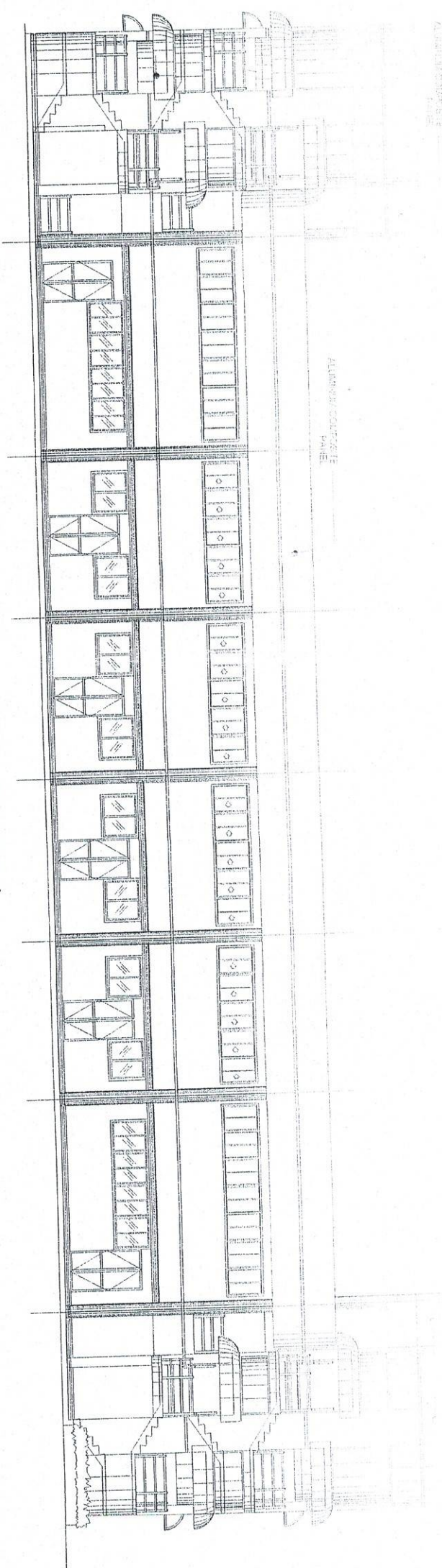
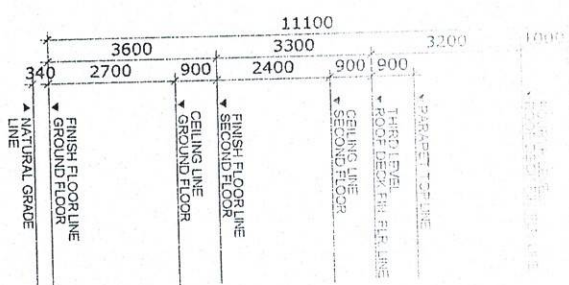
PTB ROOF DECK PLAN  
SCALE 1:150 M.



FRONT ELEVATION  
SCALE 1:150 M.

PROJECT TITLE: VARIOUS REPAINTING WORKS PORT OF PUERTO GALERA, ORIENTAL MINDORO	
PREPARED BY: DRAFTSMAN II	SUBMITTED BY: OFFICE ENGINEER
CHECKED / REVIEWED BY: ACTING PRINCIPAL ENGINEER A	RECOMMENDING APPROVAL BY: DIVISION MANAGER A, ESC
APPROVED BY: PORT MANAGER A	
SHEET CONTENTS: AS SHOWN	SCALE: AS SHOWN
SHEET NO. 4 OF 13	DATE: 10 FEBRUARY 2023

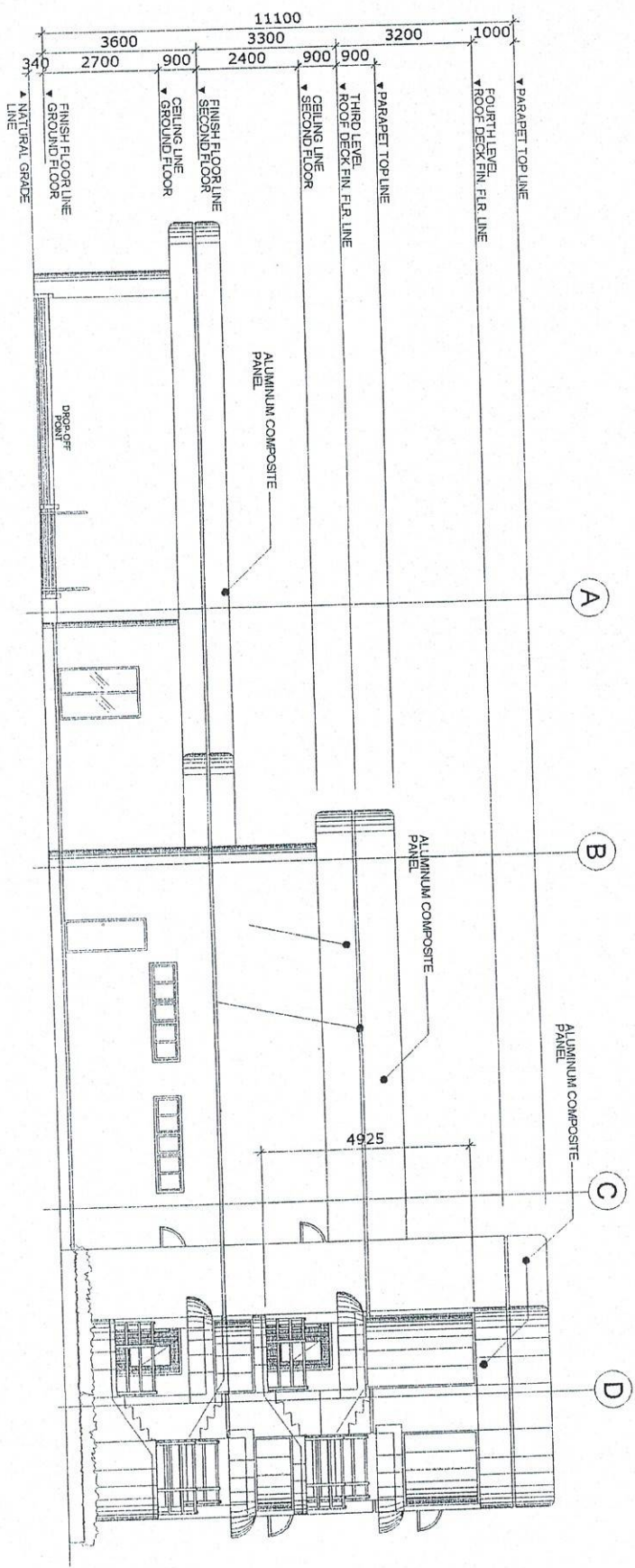




REAR ELEVATION  
SCALE 1:160 M.

NOTE:  
EXTERIOR WALL OF NEW PASSENGER  
TERMINAL BUILDING TO BE REPAINTED  
\*REPAINTING WORKS ON ACP  
1. SURFACE PREPARATION  
3. USE AUTOMOTIVE PAINT (spray)  
\*REPAINTING WORKS ON CONCRETE  
1. SURFACE PREPARATION  
2. USE ELASTOMERIC PAINT

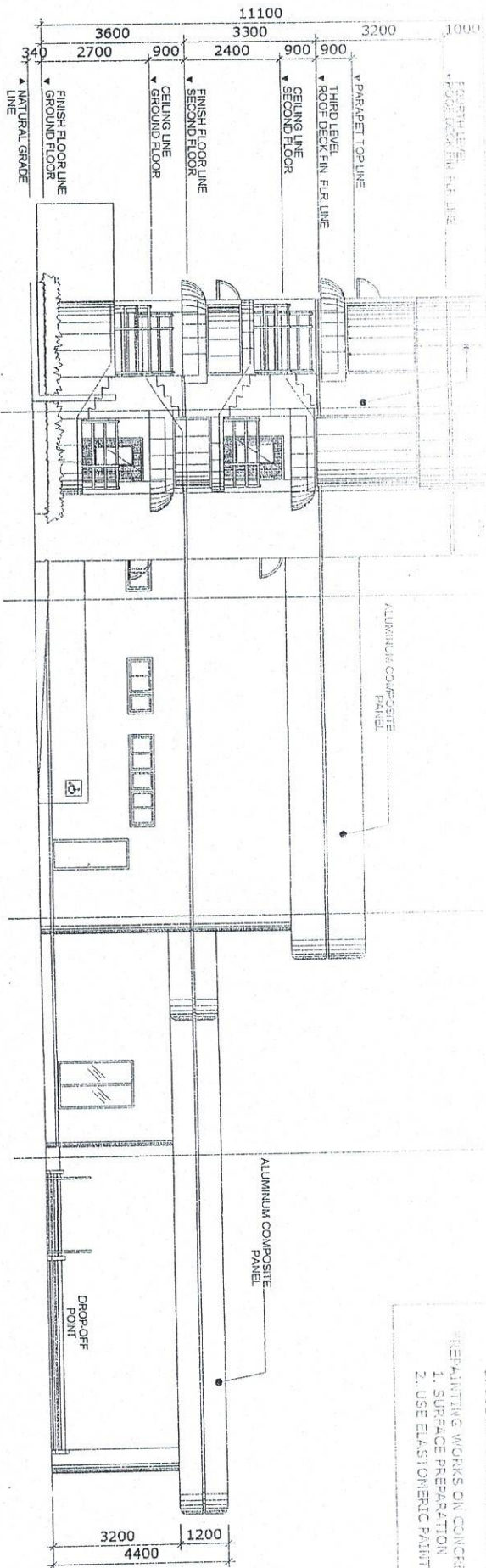
NOTE:  
THE COLOR OF THE THEME SHOULD BE  
THE SAME AS THE PORT OPERATION  
BUILDING IN THE PORT OF CALAPAN



RIGHT ELEVATION  
SCALE 1:160 M.

PROJECT TITLE VARIOUS REPAINTING WORKS PORT OF CALAPAN, ORIENTAL MINDORO		SHEET CONTENTS AS SHOWN		SCALE AS SHOWN	
PREPARED BY Drafterman II	SUBMITTED BY Office Engineer	CHECKED / REVIEWED BY Acting Principle Engineer A	RECOMMENDING APPROVAL BY Division Manager A, EST	APPROVED BY Port Manager A	SHEET NO. 1 OF 13
DATE 10 FEBRUARY 2023					





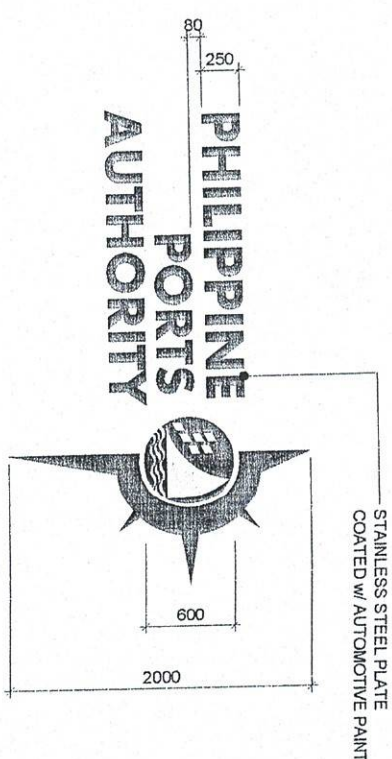
LEFT ELEVATION  
SCALE 1:150 M.

REPAIRING WORKS ON CONCRETE  
1. SURFACE PREPARATION  
2. USE ELASTOMERIC PAINT

NOTE:  
THE COLOR OF THE THEME SHOULD BE  
THE SAME AS THE PORT OPERATION  
BUILDING IN THE PORT OF CALAPAN

# PORT OF PUERTO GALERA

DETAIL OF STAINLESS STEEL PLATE  
SCALE 1:50 M



SHEET CONTENTS: AS SHOWN  
SCALE: AS SHOWN

SHEET NO. 6 of 13  
DATE: 10 FEBRUARY 2023

PROJECT TITLE:

VARIOUS REPAINTING WORKS  
PORT OF PUERTO GALERA, ORIENTAL MINDORO

PREPARED BY:

SUBMITTED BY:

CHECKED / REVIEWED BY:

RECOMMENDING APPROVAL BY:

APPROVED BY:

FORWARDED BY:

FORWARDED BY:

FORWARDED BY:

FORWARDED BY:

FORWARDED BY:

FORWARDED BY:

FORWARDED BY:

Forsterman II

Office Engineer

Adding Principal Engineer A

Division Manager A, ESD

Port Manager A



REPAIR - SINGLE ARM STEEL POST TO BE  
REPAINTED (see detail)

NOTE:  
6 sets - HIGH MAST TOWER TO BE  
REPAINTED (see detail)

PLATE 1

PLATE 2

STAIRLANDING

PASSENGER TERMINAL BUILDING

TWO BUILDING

ENTRANCE GATE

C.R.

STAIRLANDING

# LOCATION PLAN OF HIGHMAST TOWER & SINGLE ARM STEEL POST

SCALE

1:500 M.

ROAD

NOTE:  
HIGHMAST TOWER & SINGLE ARM STEEL POST TO BE  
REPAINTED INCLUDING PLATFORM, FRAME OF SOLAR  
PANEL AND CONC. BATTERY CASING  
\*REPAINTING WORKS ON STEEL  
1. SURFACE PREPARATION  
2. USE RUST CONVERTER  
3. USE AUTOMOTIVE PAINT  
\*REPAINTING WORKS ON CONC. BATTERY  
CASING, CONC. PEDestal & HANDHOLE  
(BLACK AND YELLOW STRIPE)  
1. SURFACE PREPARATION  
2. USE REFLECTORIZED PAINT

SHEET CONTENTS:

SCALE:

AS SHOWN

SHEET NO.

7 of 10

10 FEBRUARY 2020

PROJECT TITLE:

VARIOUS REPAINTING WORKS  
PORT OF PUERTO SALER, CENTRAL MINDORO

PREPARED BY:

ROBERTO M. WILSON

Drawnman II

SUBMITTED BY:

ROBERTO M. WILSON

Office Engineer

CHECKED / REVIEWED BY:

ROBERTO M. WILSON

Acting Principle Engineer / A

RECOMMENDING APPROVAL BY:

ROBERTO M. WILSON

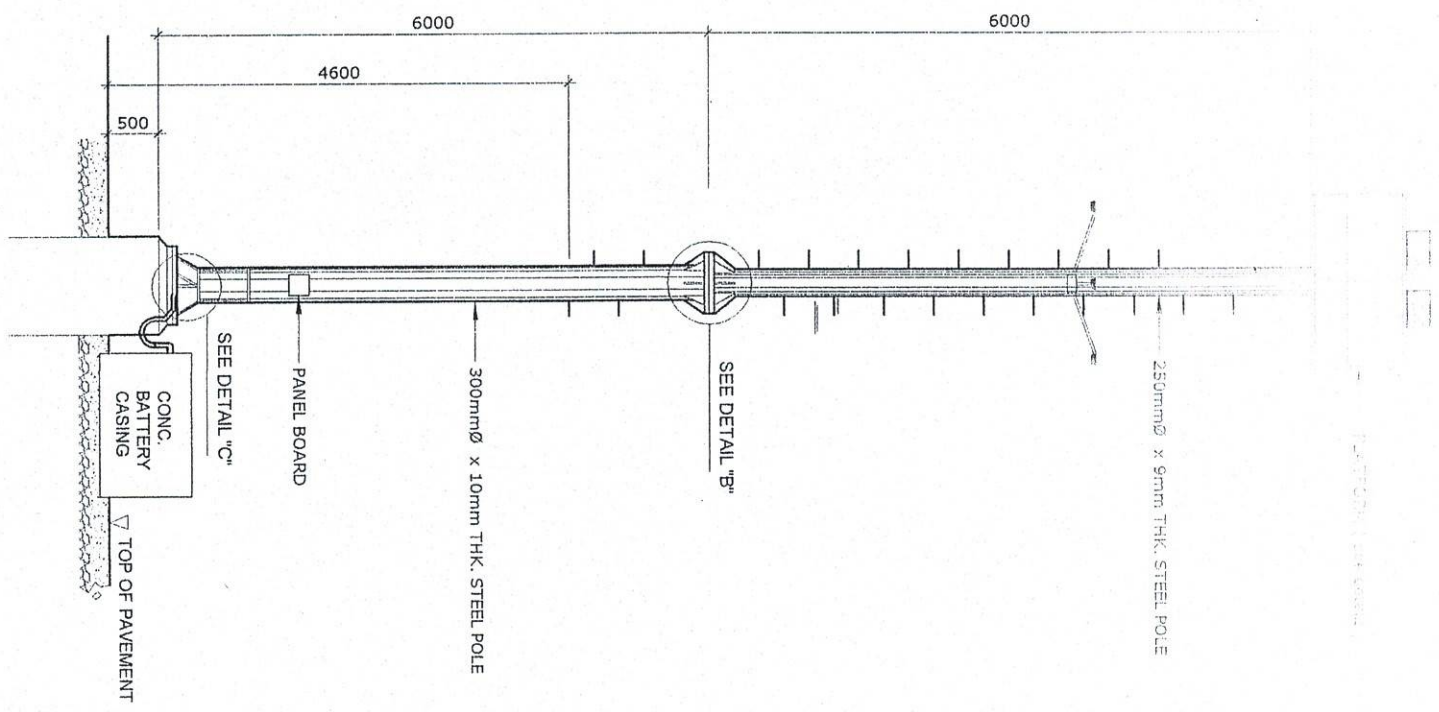
Division Manager / A, ESD

APPROVED BY:

ROBERTO M. WILSON

Port Manager / A





DETAIL OF HIGHMAST TOWER  
SOLAR POWER FLOODLIGHTS

SCALE 1:75M

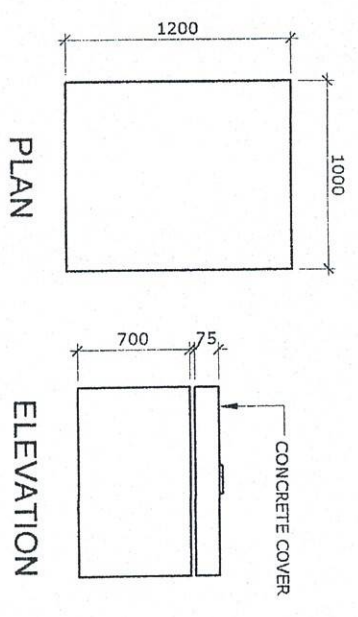
NOTE:  
HIGHMAST TOWER & SINGLE ARM STEEL POST TO BE REPAINTED INCLUDING PLATFORM, FRAME OF SOLAR PANEL AND CONC. BATTERY CASING

\*REPAINTING WORKS ON STEEL

1. SURFACE PREPARATION
2. USE RUST CONVERTER
3. USE AUTOMOTIVE PAINT

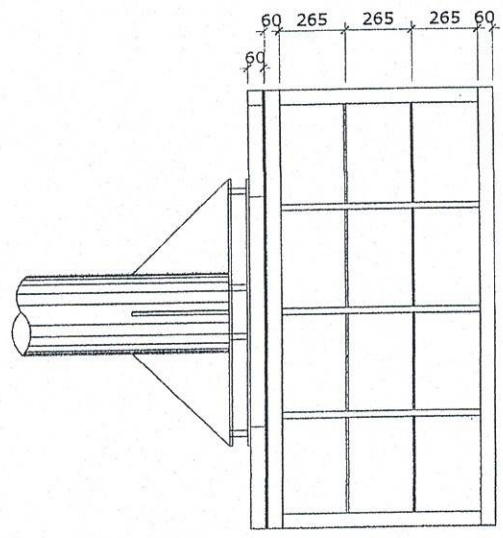
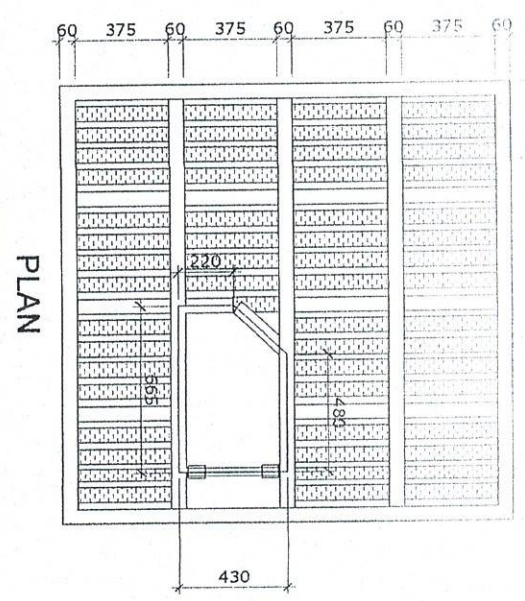
\*REPAINTING WORKS ON CONC. BATTERY CASING, CONC. PEDESTAL & HANDHOLE (BLACK AND YELLOW STRIPE)

1. SURFACE PREPARATION
2. USE REFLECTORIZED PAINT



TYPICAL DETAIL OF  
CONCRETE BATTERY CASING

SCALE 1:50 M.

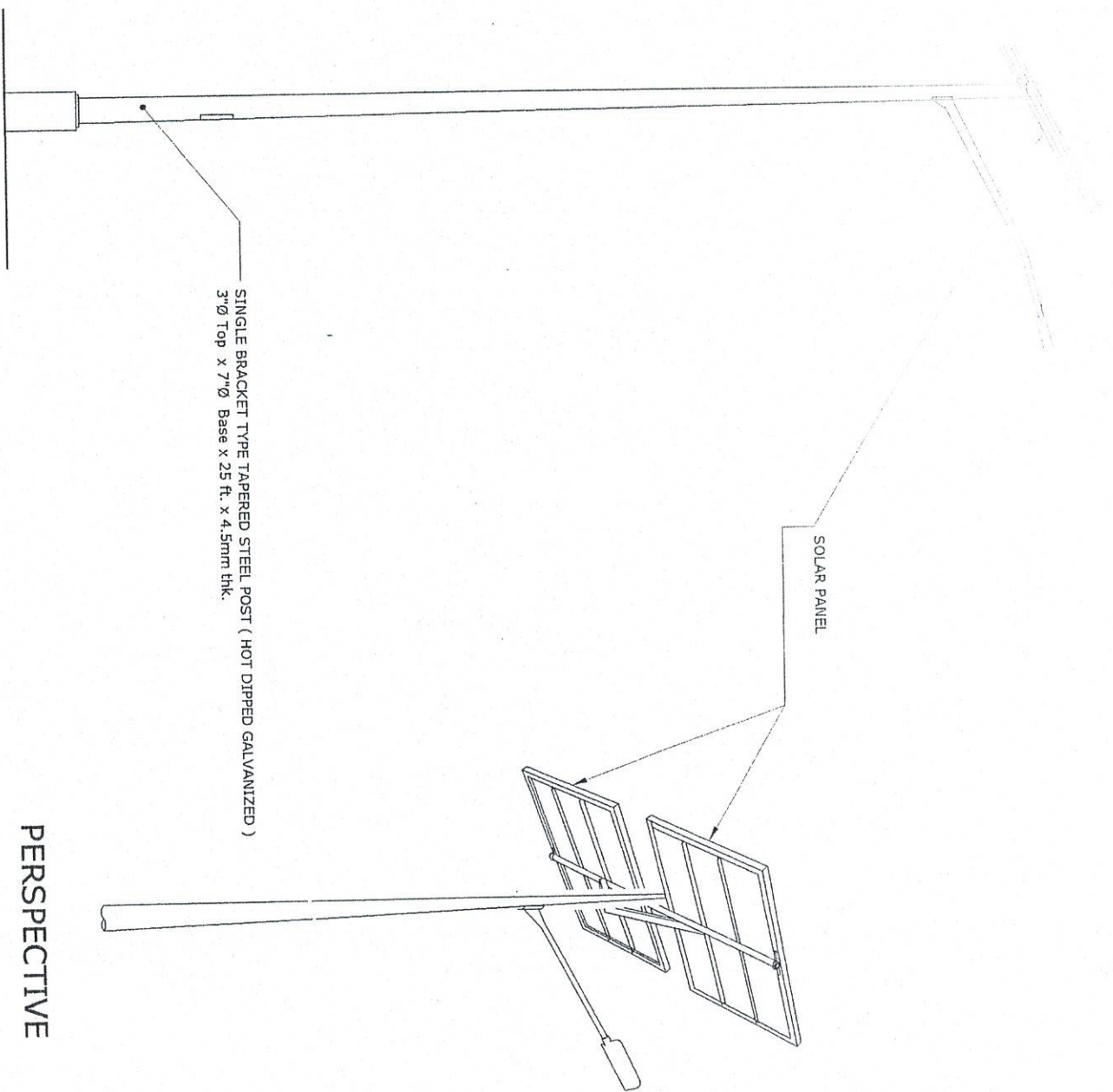


PLATFORM FRAME DETAIL

SCALE 1:30 M.

PROJECT TITLE:	VARIOUS REPAINTING WORKS	SHEET CONTENTS:	SCALE:
PROJECT NO.:	PORT OF PUERTO SALEN, ORIENTAL MINICORP	AS SHOWN	AS SHOWN
DESIGNED BY:	DESIGNED BY	SHEET NO.:	8 of 13
CHECKED/REVIEWED BY:	CHECKED/REVIEWED BY	DATE:	10 FEBRUARY 2003
APPROVED BY:	APPROVED BY		
Office Engineer:	Office Engineer		
Acting Principle Engineer:	Acting Principle Engineer		
Division Manager:	Division Manager		
Port Manager:	Port Manager		



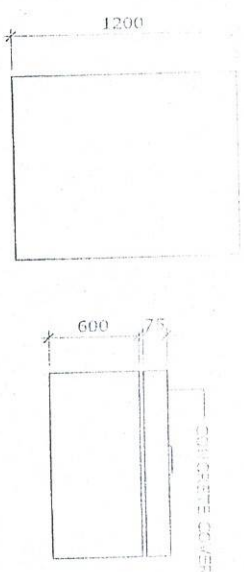


PERSPECTIVE

DETAIL OF SINGLE ARM  
STEEL POST

SCALE

NTS



PLAN

ELEVATION

TYPICAL DETAIL OF  
CONCRETE BATTERY CASING

SCALE

1:50 M.

NOTE:  
HIGHMAST TOWER & SINGLE ARM STEEL POST TO BE  
REPAINTED INCLUDING PLATFORM, FRAME OF SOLAR  
PANEL AND CONC. BATTERY CASING  
\*REPAINTING WORKS ON STEEL  
1. SURFACE PREPARATION  
2. USE RUST CONVERTER  
3. USE AUTOMOTIVE PAINT  
\*REPAINTING WORKS ON CONC. BATTERY  
CASING, CONC. PEDESTAL & HANDHOLE  
(BLACK AND YELLOW STRIPE)  
1. SURFACE PREPARATION  
2. USE REFLECTORIZED PAINT

PROJECT TITLE:

VARIOUS REPAINTING WORKS  
PORT OF PUERTO GALERA, ORIENTAL MINDORO

SHEET CONTENTS:

SCALE:  
AS SHOWN

PREPARED BY:

SUBMITTED BY:

CHECKED / REVIEWED BY:

RECOMMENDING APPROVAL BY:

APPROVED BY:

AS SHOWN

SHEET NO.:

5 of 10



PHOTO: MINDORO

ENGINEER: M. M. M. M.

OFFICE ENGINEER

ACTING PRINCIPAL ENGINEER

DIVISION MANAGER

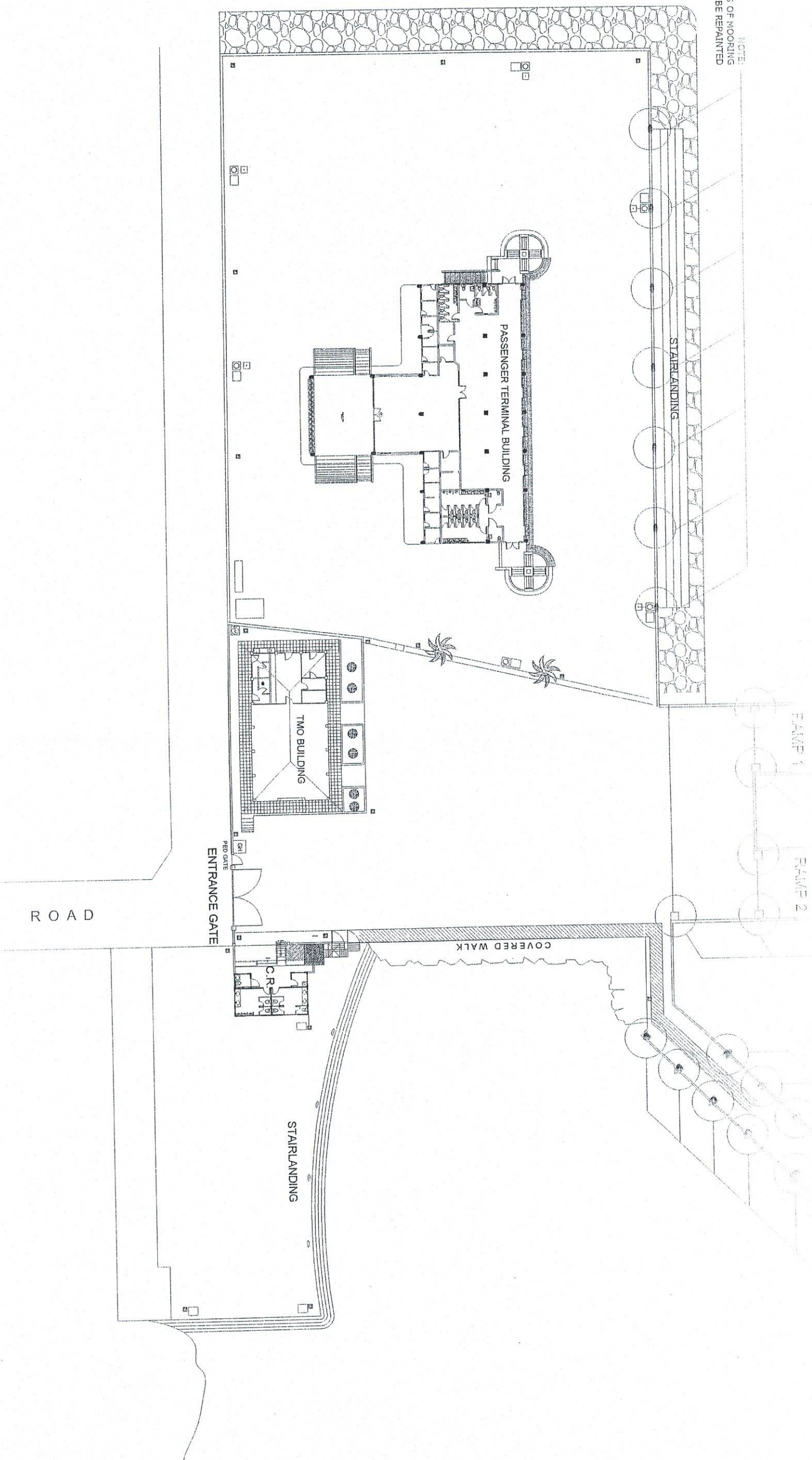
PORT MANAGER

DATE:  
10 FEBRUARY 2023



7 SETS OF LIGHTING FIXTURES  
EQUIPMENT TO BE REPAIRED

NOTE:  
7 SETS OF MOORING  
CLEATS TO BE REPAINTED



PROJECT TITLE:

VARIOUS REPAINTING WORKS

PORT OF PIERCE GALENA, ORIENTAL, HONGKONG

PREPARED BY:

SUBMITTED BY:

DESIGNED BY:

RECOMMENDING APPROVAL:

APPROVED BY:

SHEET CONTENTS:

SCALE:  
AS SHOWN

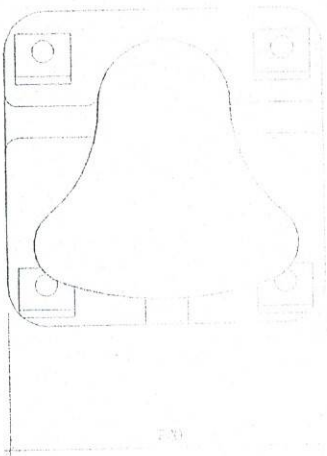
AS SHOWN

SHEET NO.

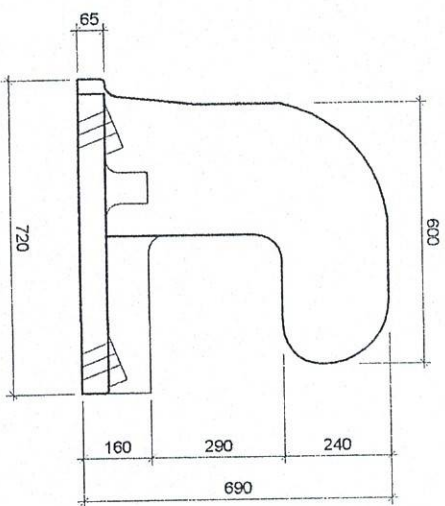
10 OF 13

10 FEBRUARY 2020

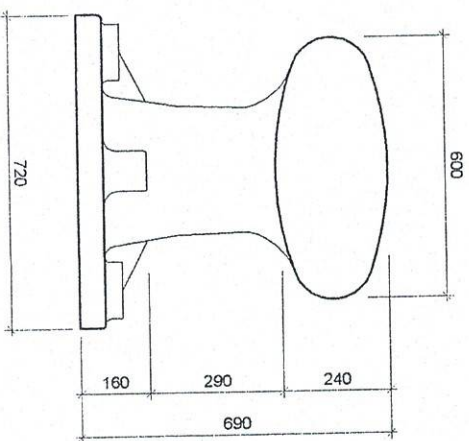




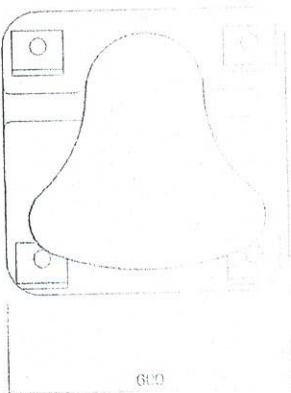
PLAN



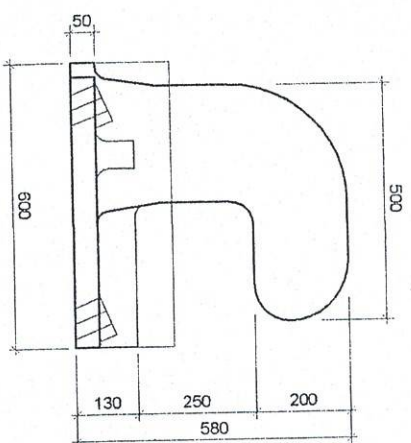
SECTION



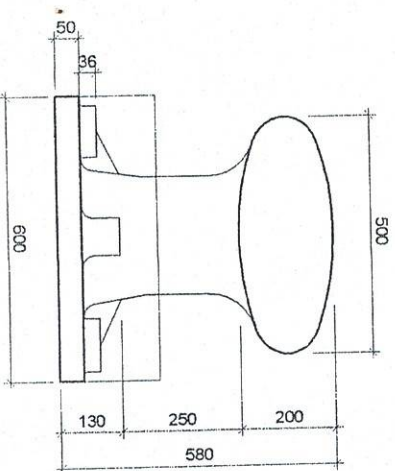
ELEVATION



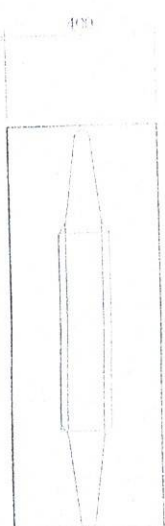
PLAN



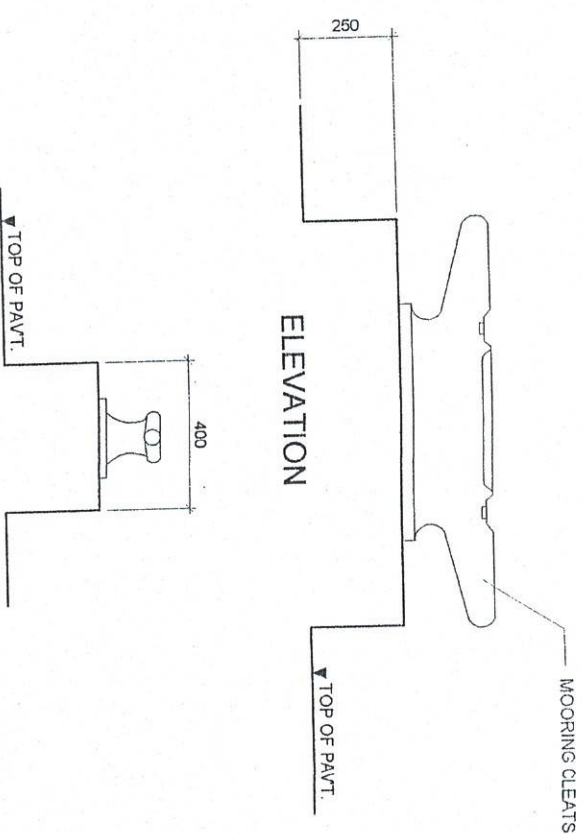
SECTION



ELEVATION



PLAN



ELEVATION

SIDE ELEVATION

MOORING CLEATS DETAILS  
SCALE 1:20 M.

NOTE:  
REPAINTING WORKS ON STEEL  
1. SURFACE PREPARATION  
2. USE RUST CONVERTER  
3. USE AUTOMOTIVE PAINT  
REPAINTING WORKS ON CONCRETE  
(BLACK & YELLOW STRIPE)  
1. SURFACE PREPARATION  
2. USE REFLECTORIZED PAINT

DETAIL OF 25 TONS  
MOORING BOLLARD  
SCALE NTS.

DETAIL OF 15 TONS  
MOORING BOLLARD  
SCALE NTS.

PROJECT TITLE:

VARIOUS REPAINTING WORKS  
PORT OF PUERTO GALERA, ORIENTAL MINDORO

SHEET CONTENTS:

SCALE: AS SHOWN

AS SHOWN

SHEET NO. 11 OF 13

PROJECT NO. 1000000000

PREPARED BY: [Signature]  
Checked by: [Signature]  
Drawn by: [Signature]

DESIGNED BY: [Signature]  
Office Engineer

CHECKED BY: [Signature]  
Acting Technical Engineer A

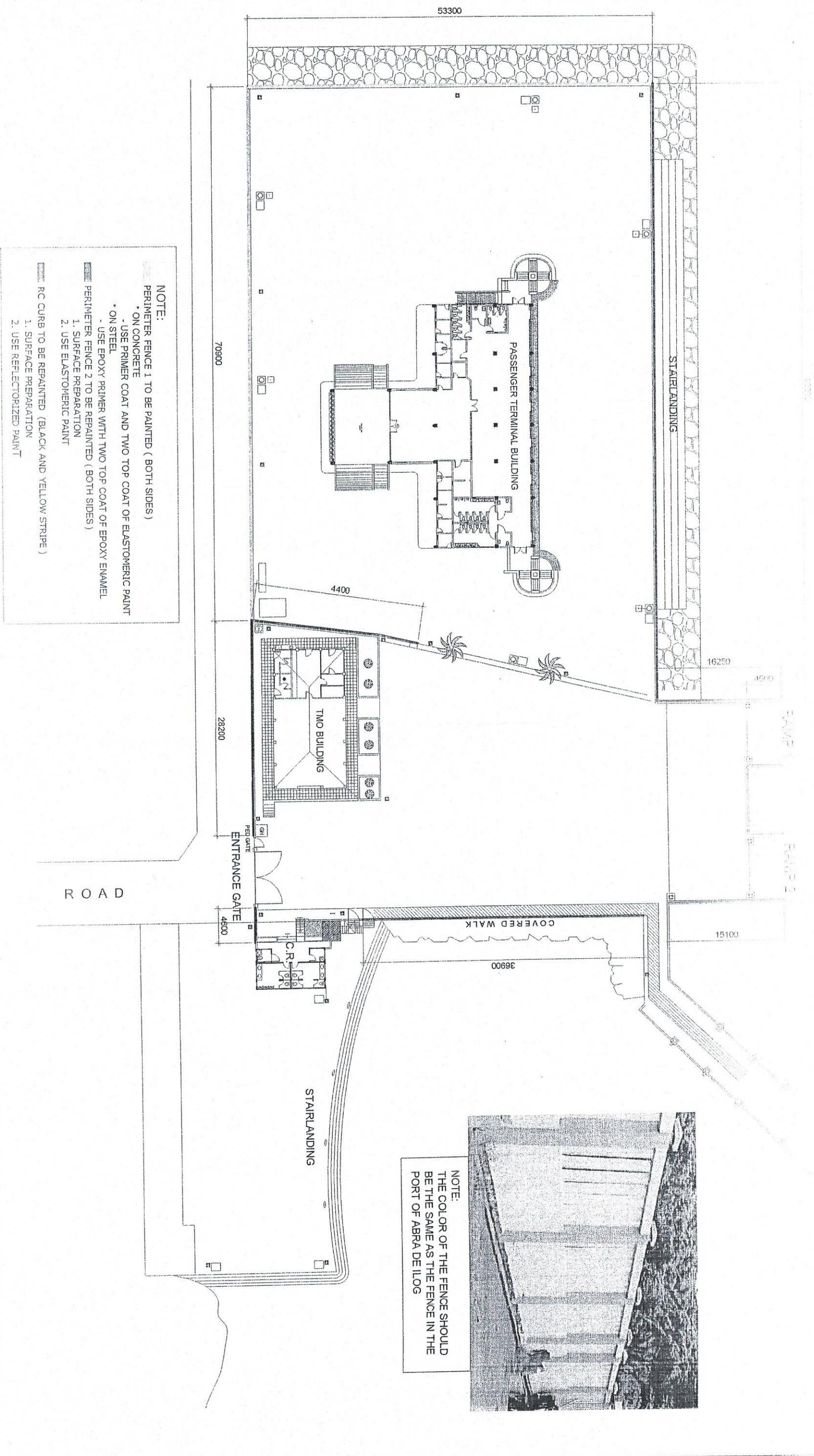
RECOMMENDING APPROVAL BY: [Signature]  
Division Manager A, ESC

APPROVED BY: [Signature]  
Port Manager A

10 FEBRUARY 2020

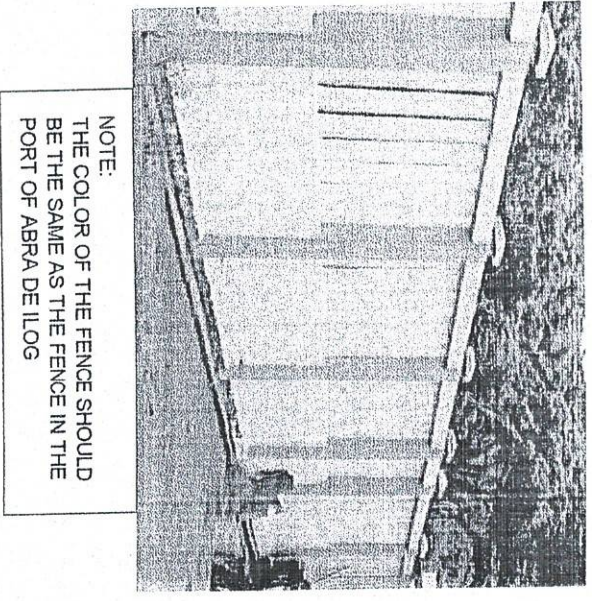


# LOCATION PLAN OF PERIMETER FENCE & RC CURB



**NOTE:**

- PERIMETER FENCE 1 TO BE PAINTED ( BOTH SIDES )
- ON CONCRETE
- USE PRIMER COAT AND TWO TOP COAT OF ELASTOMERIC PAINT
- ON STEEL
- USE EPOXY PRIMER WITH TWO TOP COAT OF EPOXY ENAMEL
- PERIMETER FENCE 2 TO BE REPAINTED ( BOTH SIDES )
- 1. SURFACE PREPARATION
- 2. USE ELASTOMERIC PAINT
- RC CURB TO BE REPAINTED ( BLACK AND YELLOW STRIPE )
- 1. SURFACE PREPARATION
- 2. USE REFLECTORIZED PAINT



**NOTE:**

THE COLOR OF THE FENCE SHOULD BE THE SAME AS THE FENCE IN THE PORT OF ABRA DE ILOG

**PROJECT TITLE:** VARIOUS REPAINTING WORKS

**PORT OF ABRA DE ILOG, DENZEL A. MENDOZA**

**SHEET CONTENTS:** SCALE AS SHOWN

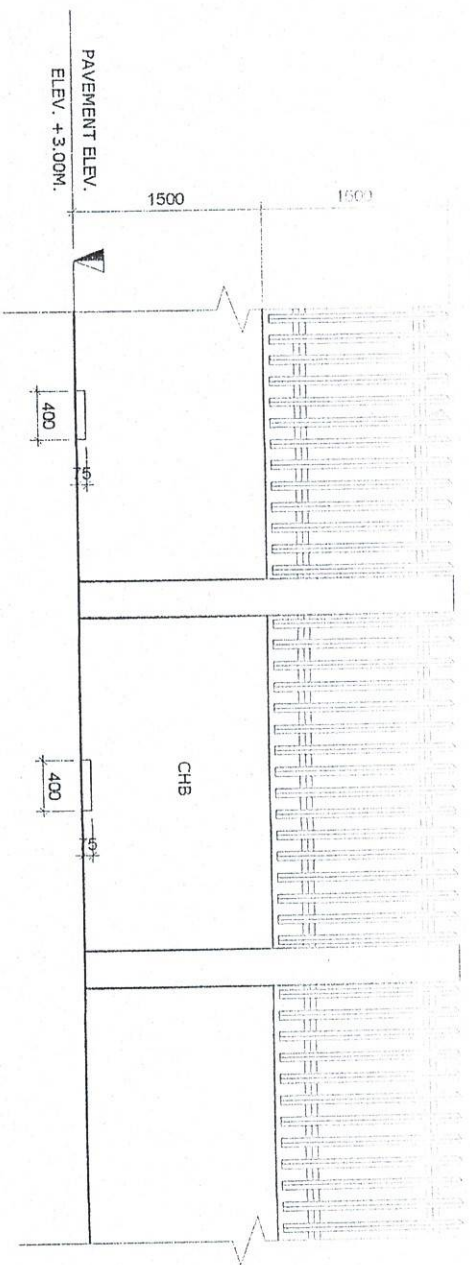
**SHEET NO. 12 OF 10**

**PREPARED BY:** [Signature]  
**DESIGNED BY:** [Signature]  
**CHECKED BY:** [Signature]  
**APPROVED BY:** [Signature]  
**DATE:** 10 FEBRUARY 2023

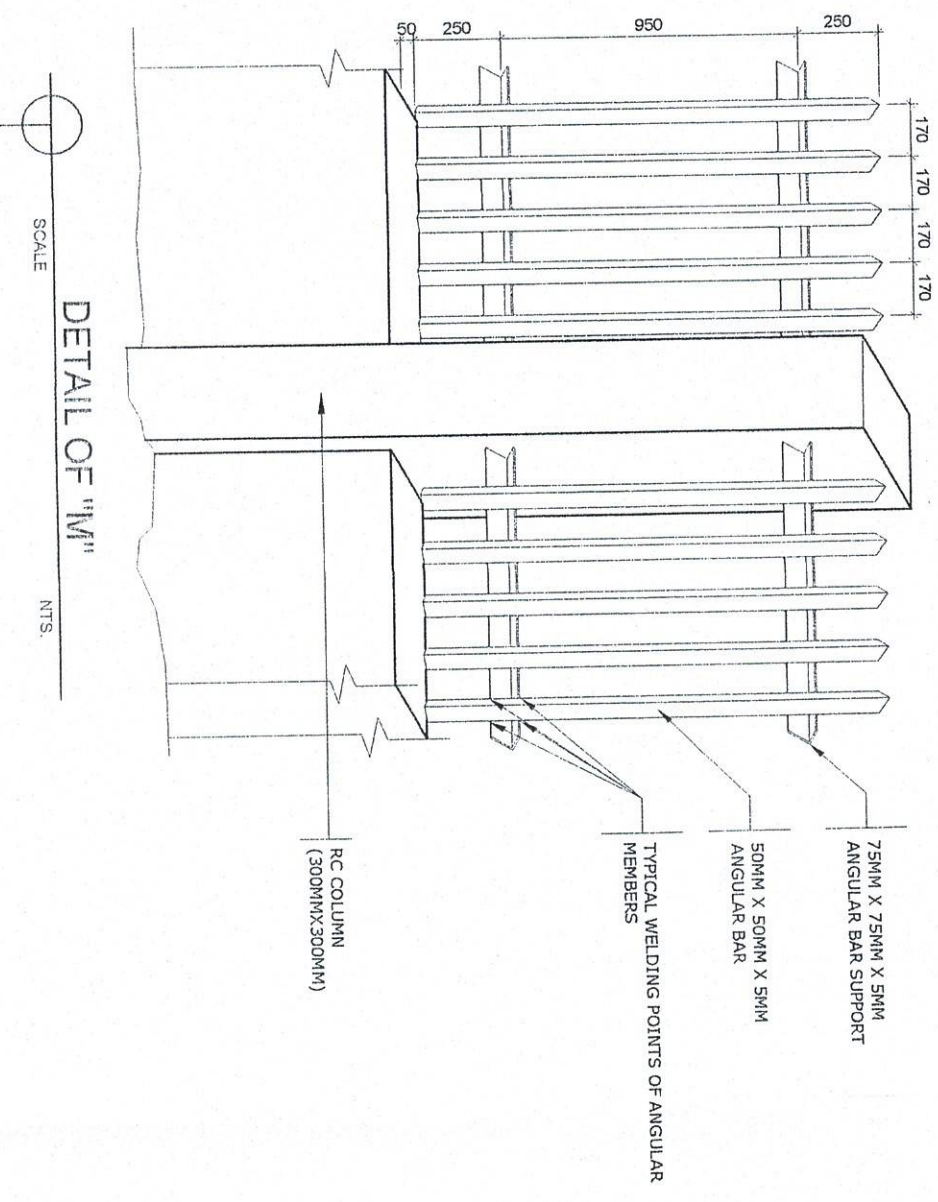


NOTES:  
(SEE DETAIL M)

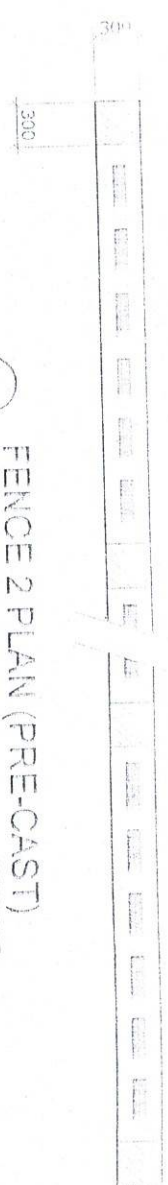
SCALE  
(SEE DETAIL M)



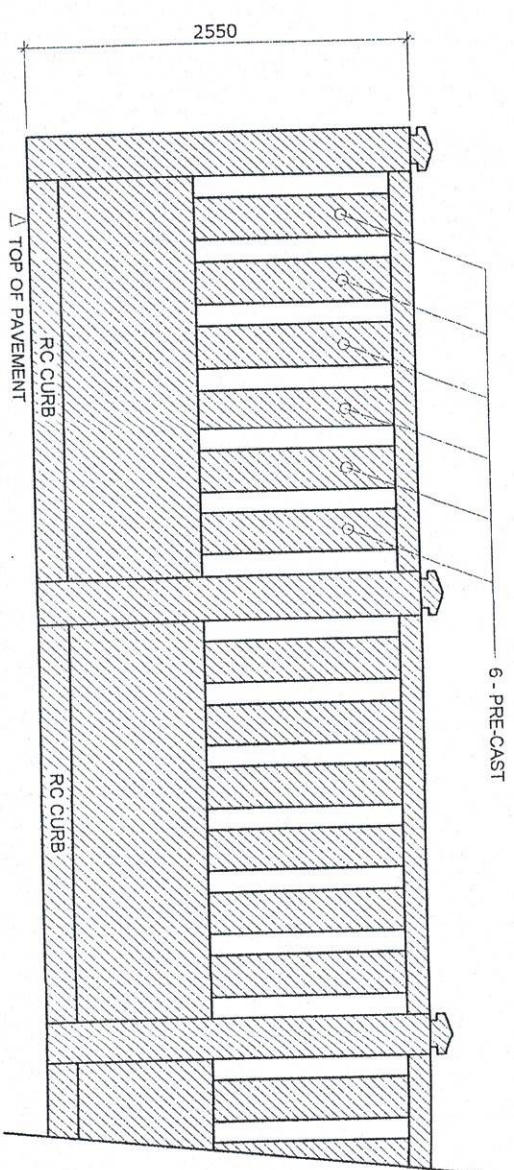
**FENCE 1 PLAN ELEVATION**  
SCALE  
1:50 M.



**DETAIL OF "M"**  
SCALE  
NTS.



**FENCE 2 PLAN (PRE-CAST)**  
SCALE  
1:50 M.



**FENCE 2 ELEV. (PRE-CAST)**  
SCALE  
1:50 M.

**NOTE:**  
PERIMETER FENCE 1 TO BE PAINTED ( BOTH SIDES )  
• ON CONCRETE  
• USE PRIMER COAT AND TWO TOP COAT OF ELASTOMERIC PAINT  
• ON STEEL  
• USE EPOXY PRIMER WITH TWO TOP COAT OF EPOXY ENAMEL  
PERIMETER FENCE 2 TO BE REPAINTED ( BOTH SIDES )  
1. SURFACE PREPARATION  
2. USE ELASTOMERIC PAINT  
RC CURB TO BE REPAINTED ( BLACK AND YELLOW STRIPE )  
1. SURFACE PREPARATION  
2. USE REFLECTORIZED PAINT

PROJECT TITLE: VARIOUS REPAIRING WORKS

PORT OF PUERTO GALERA, ORIENTAL MINDORO

PREPARED BY:

SUBMITTED BY:

CHECKED BY:

RECOMMENDING APPROVAL BY:

APPROVED BY:

SHEET CONTENTS: SCALE: AS SHOWN

SHEET NO. 10 of 13

DATE: 10 FEBRUARY, 2023

PROJECT NO. 10 of 13

DATE: 10 FEBRUARY, 2023

PROJECT NO. 10 of 13

DATE: 10 FEBRUARY, 2023

PROJECT NO. 10 of 13

DATE: 10 FEBRUARY, 2023