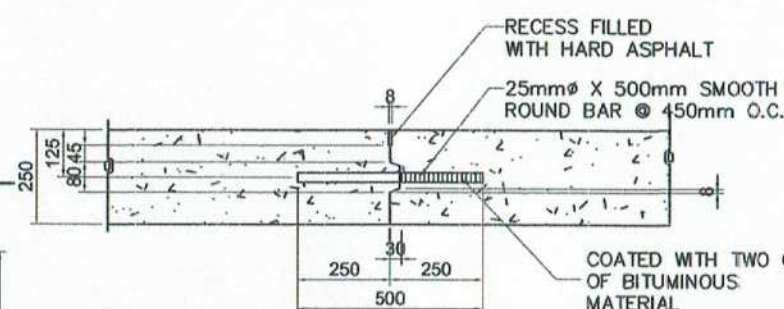
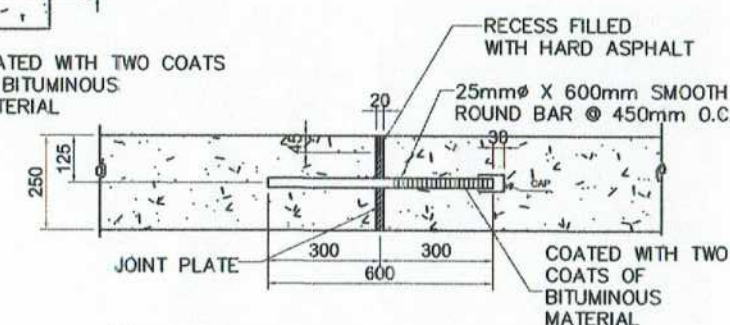


**TYP. SECTION OF CONCRETE PAVEMENT**  
SCALE 1:30



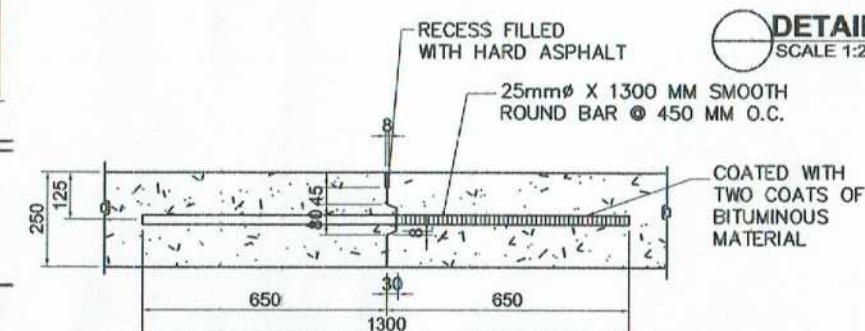
 **DETAIL OF TRANSVERSE JOINT**  
SCALE 1:20









**DETAIL OF EXPANSION JOINT**  
SCALE 1:20

**NOTE:**

1. ALL REINFORCING BARS SHALL CONFORM WITH ASTM A615. ALL REINFORCING STEEL BARS SHALL INTERMEDIATE GRADE WITH ULTIMATE STRENGTH (fy) OF 276 MPa OR 40,000psi (GRADE 40) FOR 12mmØ BELOW AND 414 MPa OR 60,000psi (GRADE 60) FOR 16mmØ ABOVE.



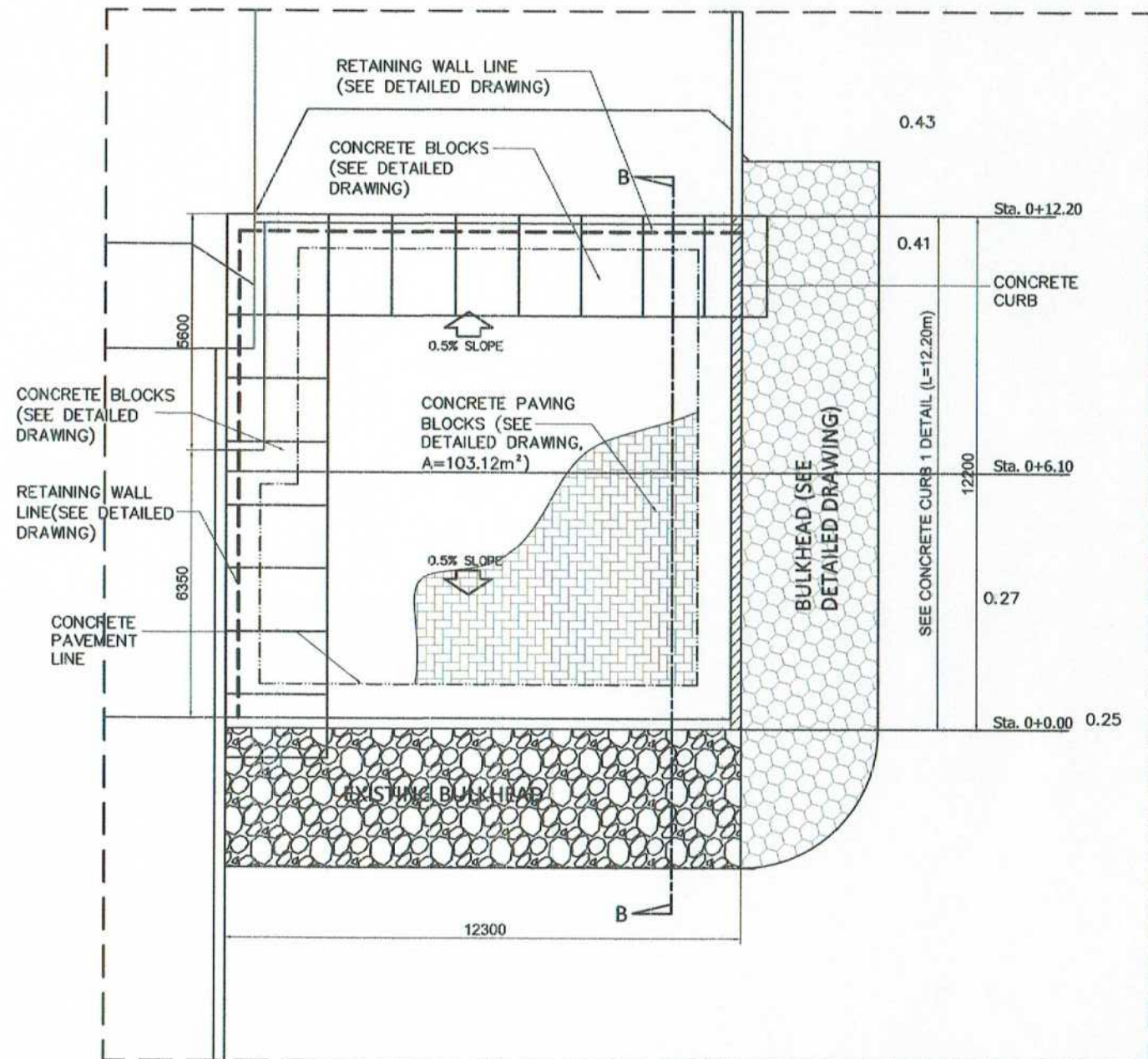
**DETAIL OF LONGITUDINAL JOINT**  
SCALE 1:20

	PROJECT TITLE	PREPARED BY:	CHECKED BY:	REVIEWED BY:	RECOMMENDING APPROVAL:	APPROVED BY:	SHEET CONTENT:	DATE:
	EMERGENCY REPAIR OF SETTLED BACK-UP AND MANEUVERING AREAS AND CONCRETE PAVEMENT DAMAGED BY MAGNITUDE 7.2 EARTHQUAKE LOCATION PORT OF GLAN, GLAN SARANGANI PROVINCE	 JOE CARLO I. SORIANO ENGINEERING ASSISTANT (I/O)	 CHARMAINE DUJINE MANTOYA SENIOR ENGINEER A (I/O)	 MARIA VIVIEN M. TANCO ACTING PRINCIPAL ENGINEER A	 JAMESON L. LEE ESO MANAGER	 ATTY. CESAR M. DATAYA ACTING PORT MANAGER	1. SECTION 'A-A' 2. TYP. SECTION OF CONCRETE PAVEMENT 3. CONCRETE PAVEMENT PLAN SHOWING THE REBARS 4. DETAIL OF JOINT	2/8

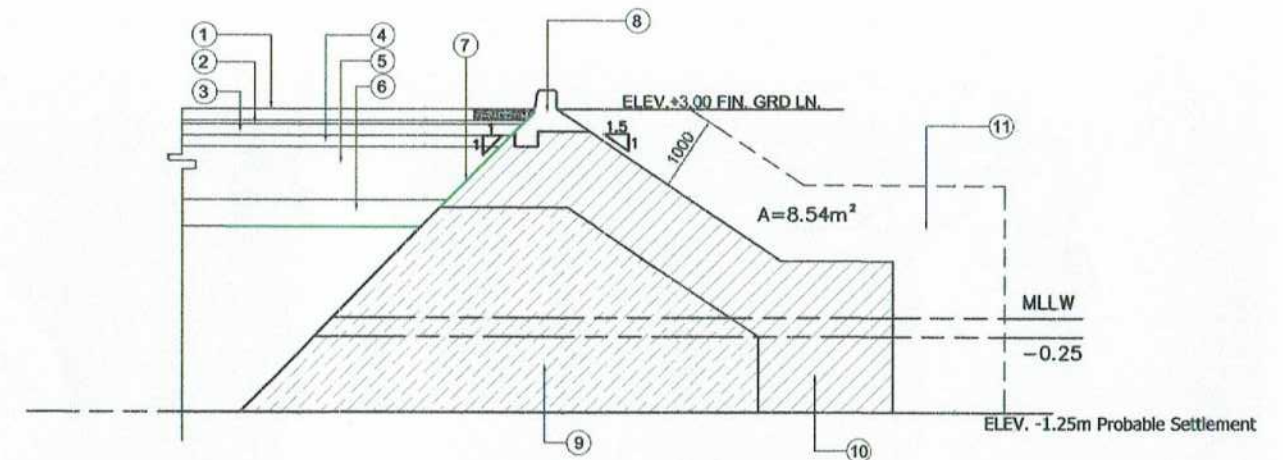


LEGEND:

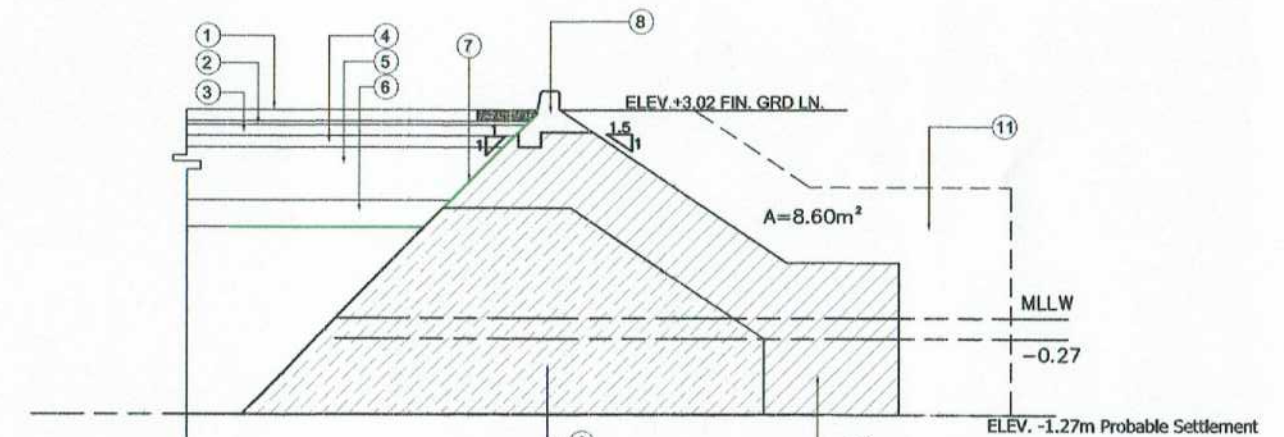
- |  |  |
|--|--|
| ① • 100X200X125mm(6000 PSI)CONC. PAVING BLOCKS | ⑧ • CONCRETE CURB                                  |
| ② • 50mm THK SAND CUSHION                      | ⑨ • 50-100 KGS CORE ROCK (EXISTING)                |
| ③ • 150mm THK 10% CEMENT BASE TREATED          | ⑩ • 1000KGS ARMOUR ROCK (EXISTING)                 |
| ④ • 150mm THK AGGREGATE BASE COURSE            | ⑪ • 1000KGS ARMOUR ROCK                            |
| ⑤ • SELECTED FILL 100% COMPACTION (P.I. = 0-3) | ⑫ • 4000 PSI CONCRETE BLOCK (SEE DETAILED DRAWING) |
| ⑥ • SAND AND GRAVEL FILL                       | ⑬ • RETAINING WALL (SEE DETAILED DRAWING)          |
| ⑦ • GEOTEXTILE FABRIC (W/ 1 METER OVERLAPPING) |  |



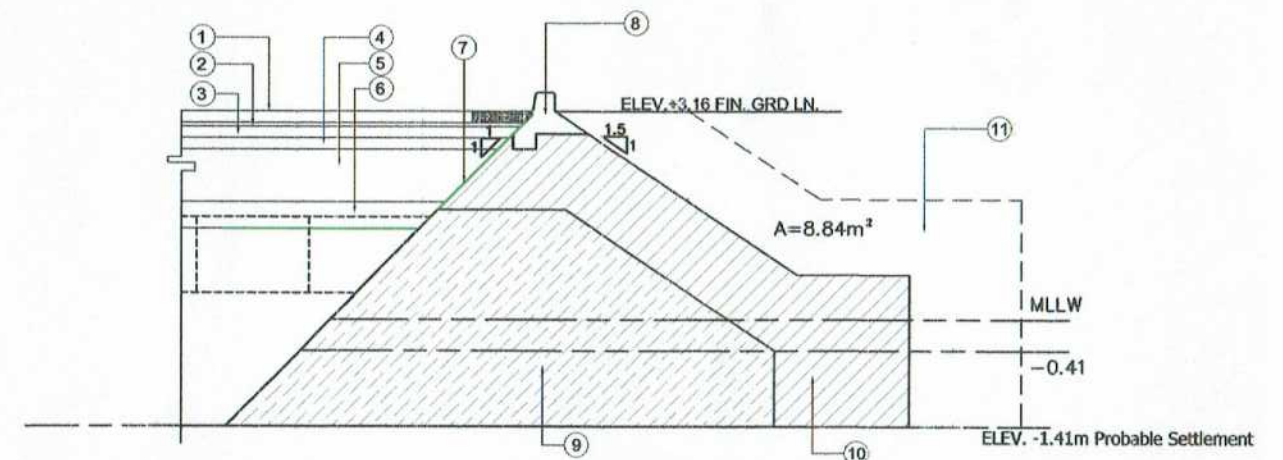
**MANEUVERING AREA BLOW-UP PLAN**  
SCALE 1:150



**CROSS SECTION @ STA. 0+0.00**  
SCALE 1:100



**CROSS SECTION @ STA. 0+6.10**  
SCALE 1:100

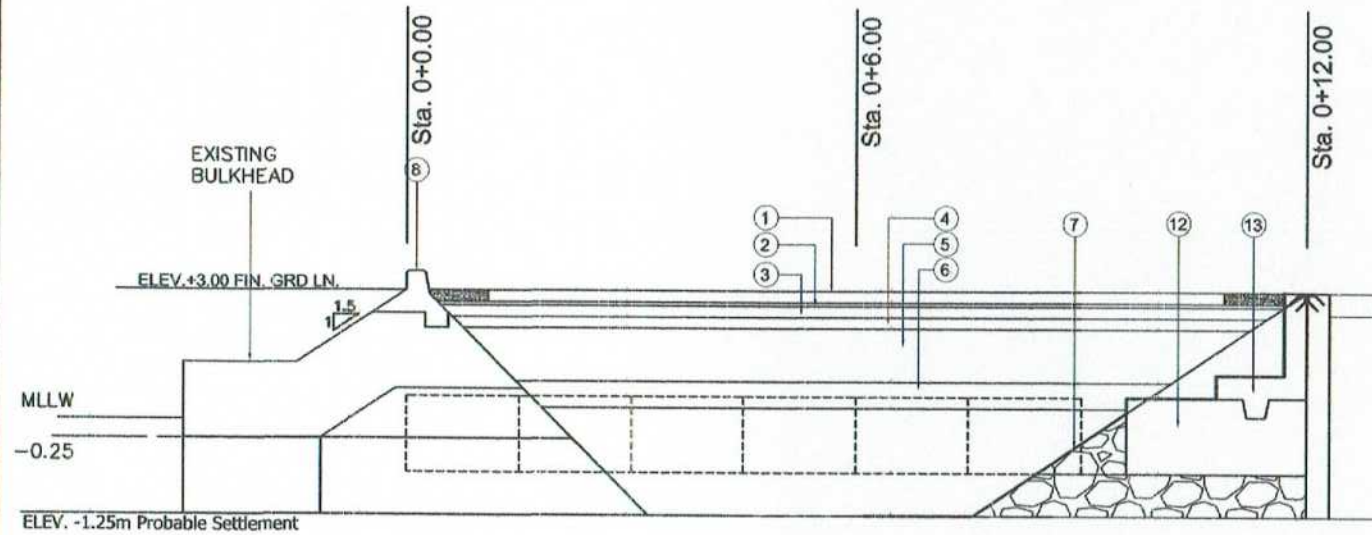


**CROSS SECTION @ STA. 0+12.20**  
SCALE 1:100

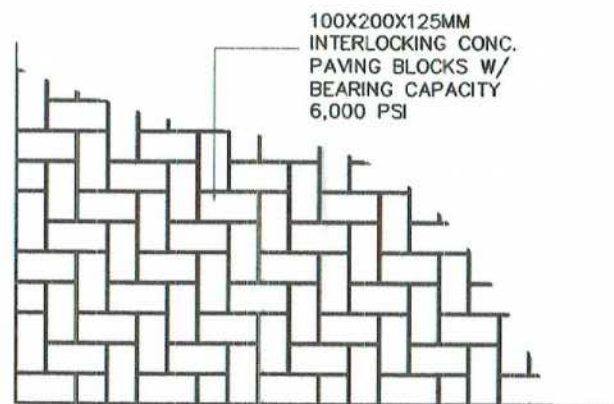


LEGEND:

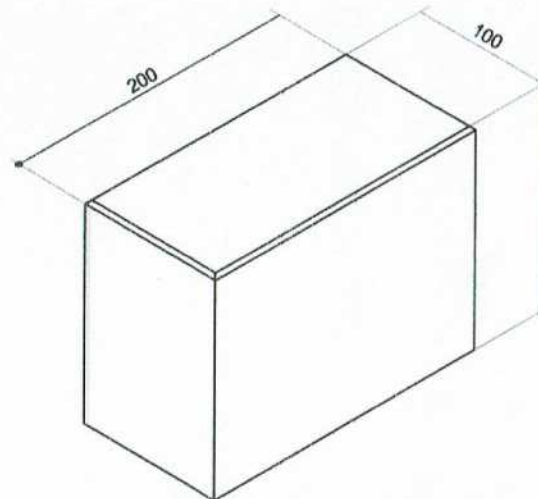
- |  |  |
|--|--|
| ① • 100X200X125mm(6000 PSI)CONC. PAVING BLOCKS | ⑧ • CONCRETE CURB                                  |
| ② • 50mm THK SAND CUSHION                      | ⑨ • 50-100 KGS CORE ROCK (EXISTING)                |
| ③ • 150mm THK 10% CEMENT BASE TREATED          | ⑩ • 1000KGS ARMOUR ROCK (EXISTING)                 |
| ④ • 150mm THK AGGREGATE BASE COURSE            | ⑪ • 1000KGS ARMOUR ROCK                            |
| ⑤ • SELECTED FILL 100% COMPACTION (P.I. = 0-3) | ⑫ • 4000 PSI CONCRETE BLOCK (SEE DETAILED DRAWING) |
| ⑥ • SAND AND GRAVEL FILL                       | ⑬ • RETAINING WALL (SEE DETAILED DRAWING)          |
| ⑦ • GEOTEXTILE FABRIC (W/ 1 METER OVERLAPPING) |  |



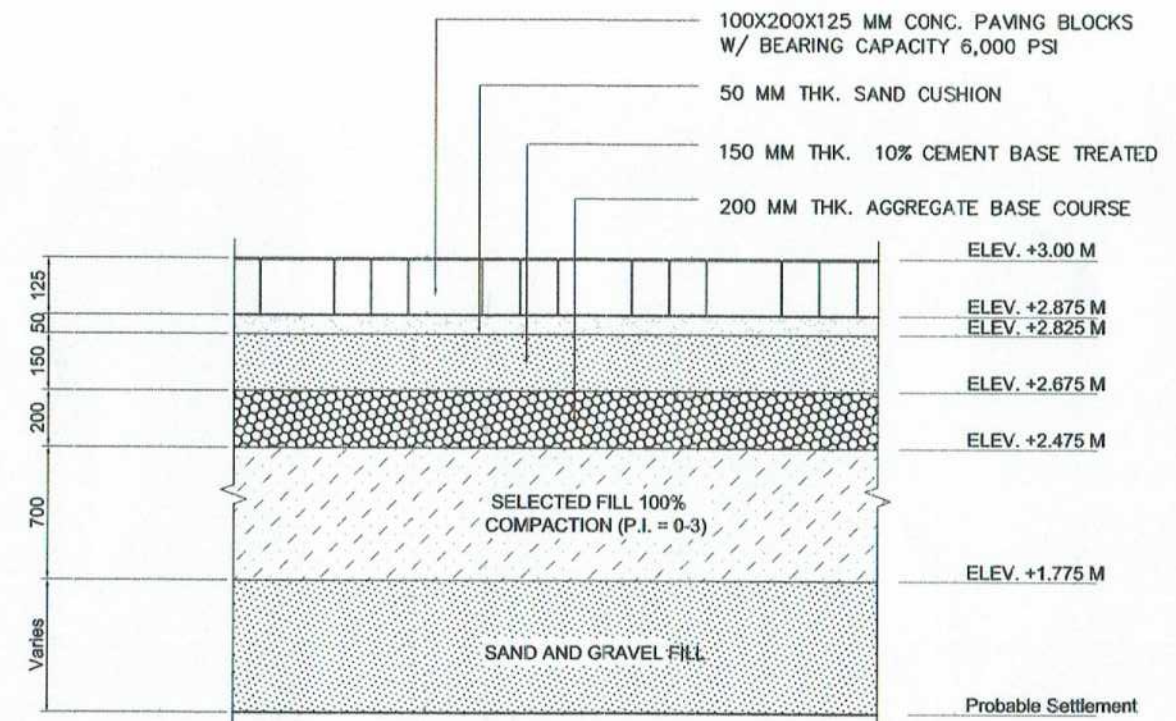
SECTION 'B-B'  
SCALE 1:100



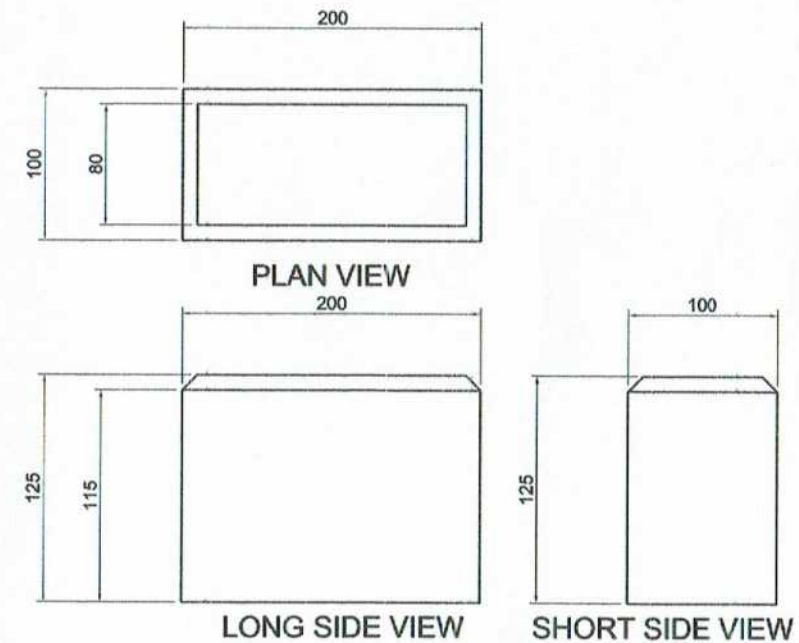
PLACING PATTERN OF INTERLOCKING CONCRETE BLOCKS  
SCALE 1:25



ISOMETRIC VIEW



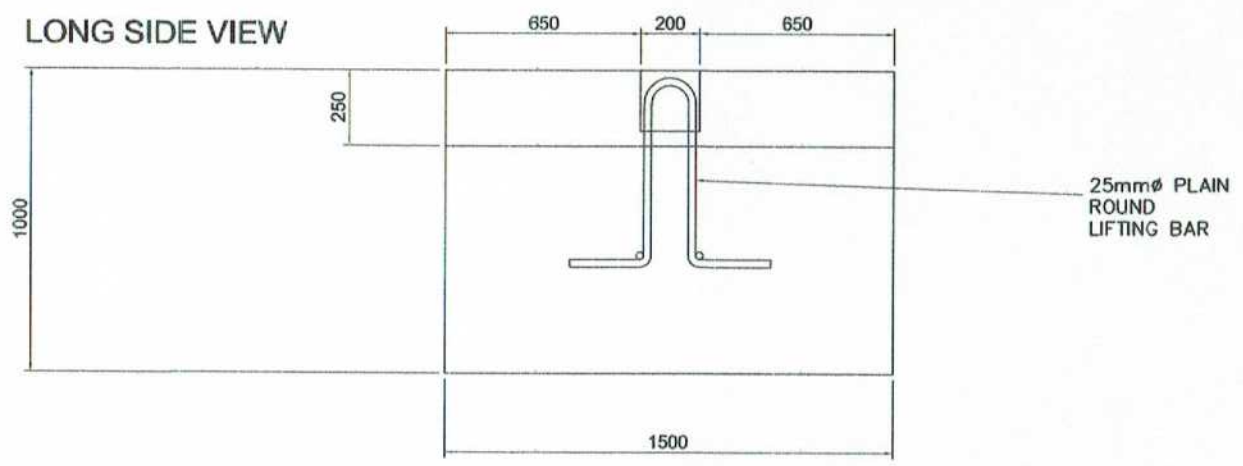
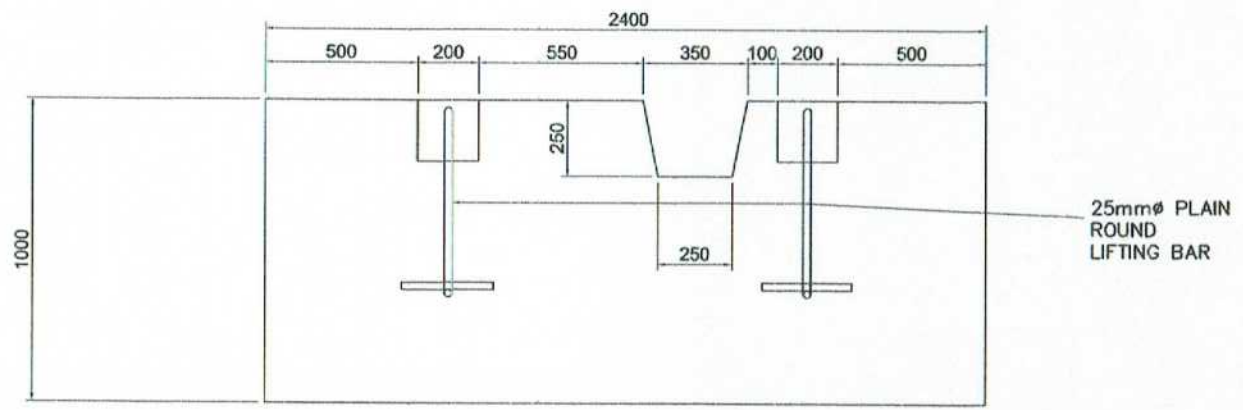
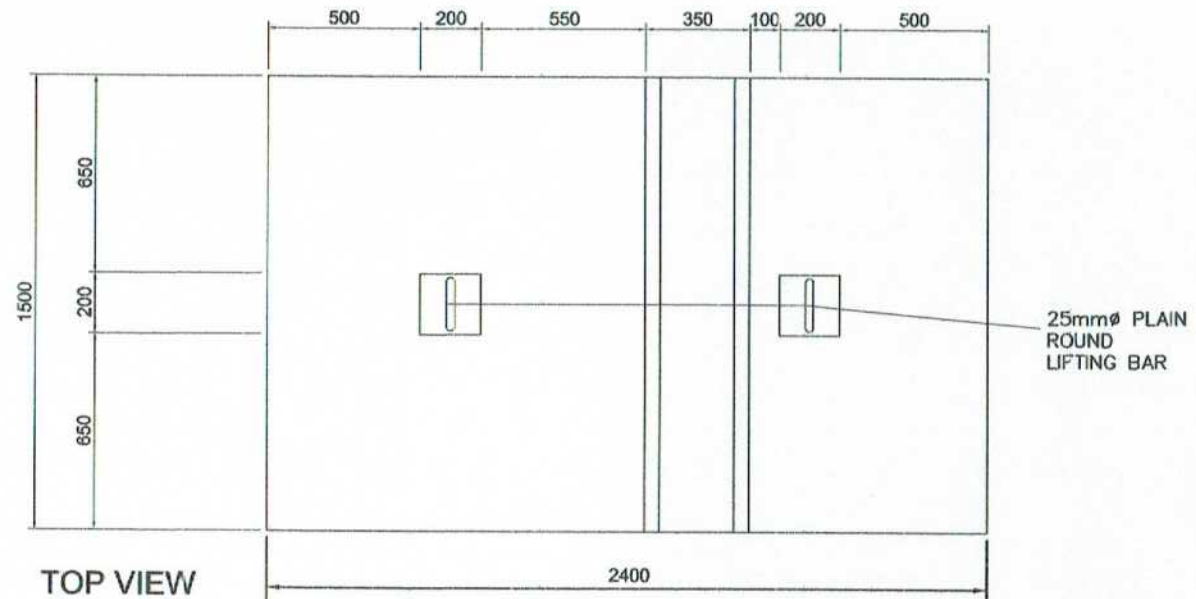
TYPICAL PART SECTION OF CONC. PAVING BLOCKS  
SCALE 1:20



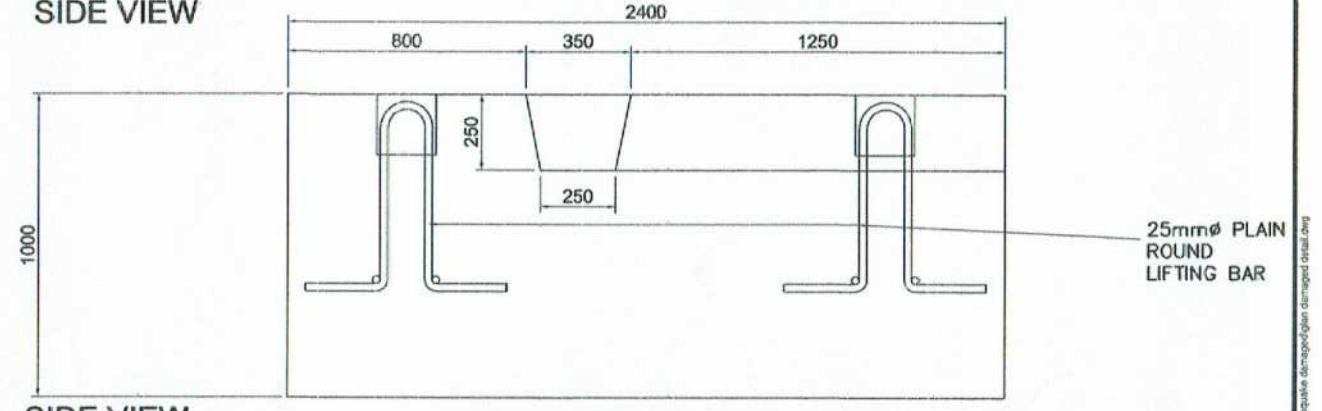
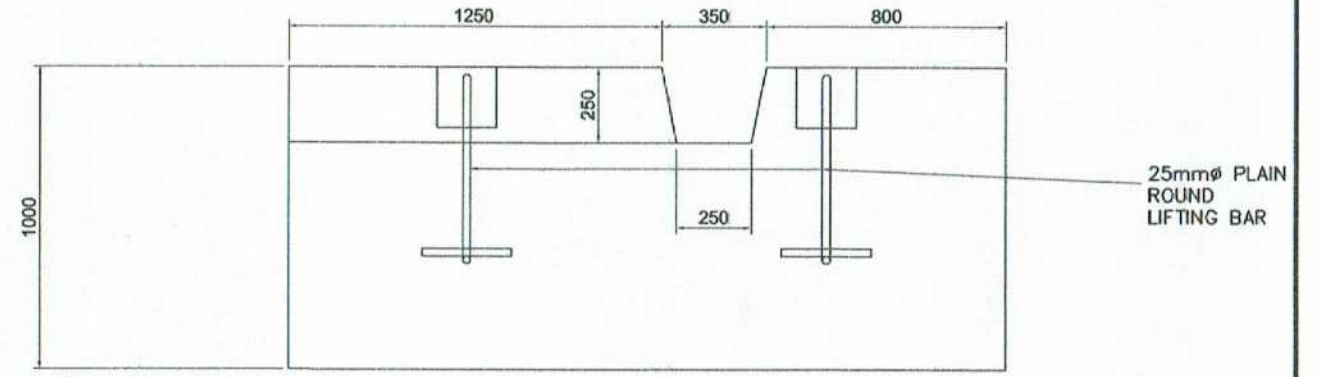
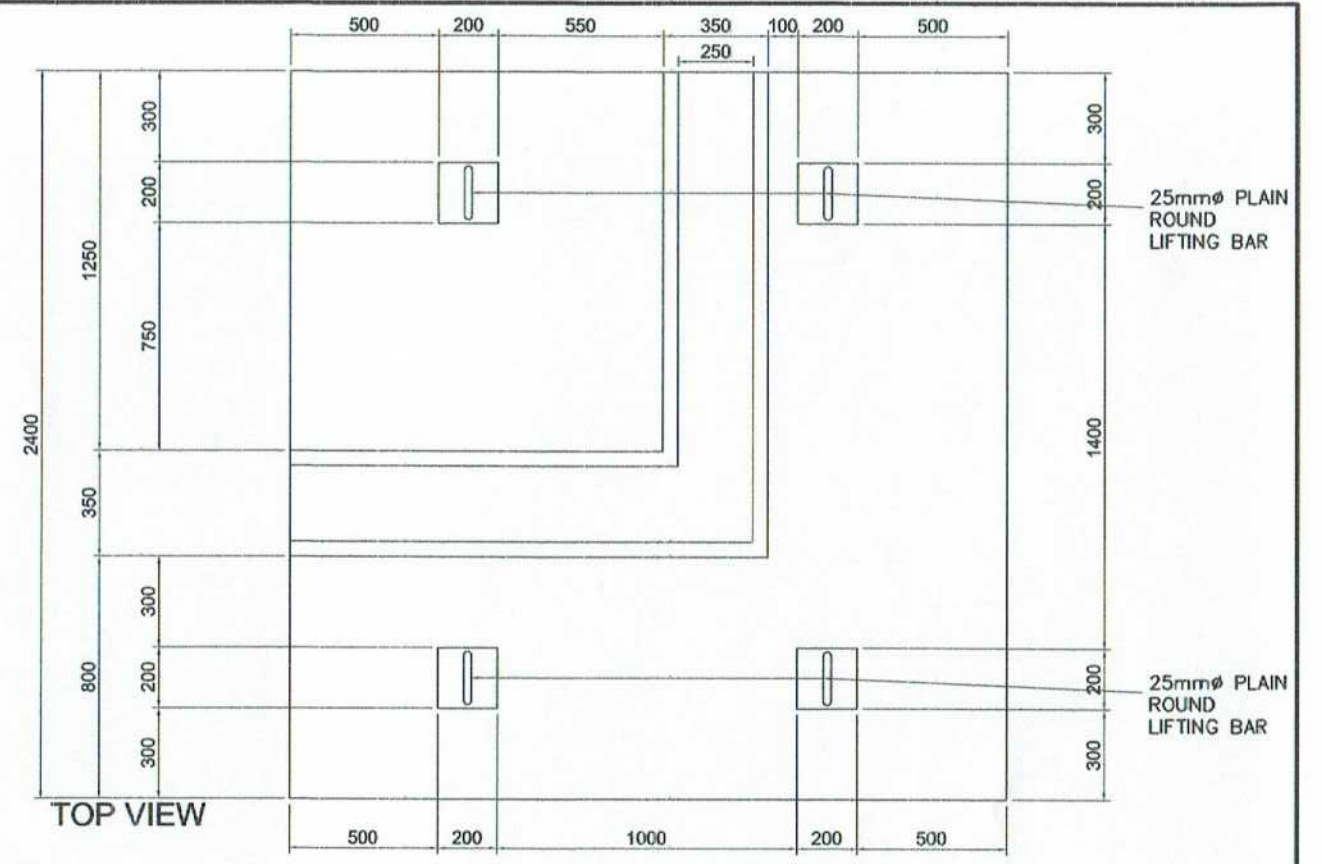
NOTE: PAVING BLOCK BEARING  
CAPACITY OF  $f_c = 40.9 \text{ MPa}$  (6,000 PSI)

CONC. PAVING BLOCK DETAIL  
SCALE 1:5





**CONCRETE BLOCK DETAIL**  
SCALE 1:25



**CONCRETE CORNER BLOCK DETAIL**  
SCALE 1:25 METERS



PROJECT TITLE  
EMERGENCY REPAIR OF SETTLED BACK-UP AND  
MANEUVERING AREAS AND CONCRETE PAVEMENT  
DAMAGED BY MAGNITUDE 7.2 EARTHQUAKE  
LOCATION  
PORT OF GLAN, GLAN, SARANGANI PROVINCE

PREPARED BY:  
*Joe Carlo I. Soriano*  
JOE CARLO I. SORIANO  
ENGINEERING ASSISTANT (J.O.)

CHECKED BY:  
*Charmaine D. June Mantoya*  
CHARMAINE D. JUNE MANTOYA  
SENIOR ENGINEER A (J.O.)

REVIEWED BY:  
*Maria Vivien M. Tanco*  
MARIA VIVIEN M. Tanco  
ACTING PRINCIPAL ENGINEER A

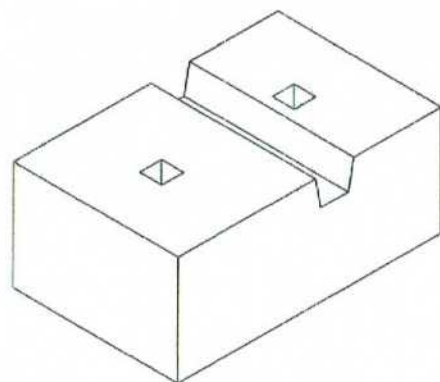
RECOMMENDING APPROVAL:  
*Jameson L. Lee*  
JAMESON L. LEE  
ESD MANAGER

APPROVED BY:  
*Atty. Cesar M. Dataya*  
ATTY. CESAR M. DATAYA  
ACTING PORT MANAGER

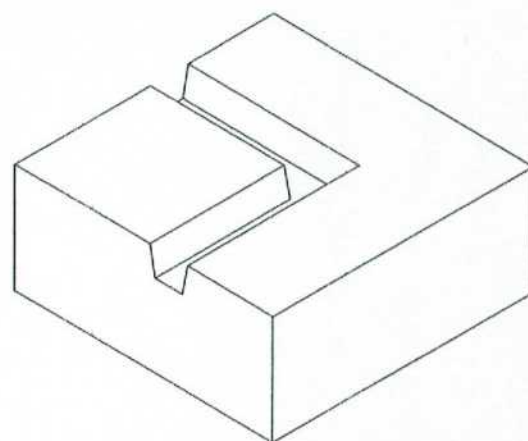
SHEET CONTENT:  
1. CONCRETE BLOCK DETAIL  
2. CONCRETE CORNER BLOCK DETAIL

DATE:  
**5/8**



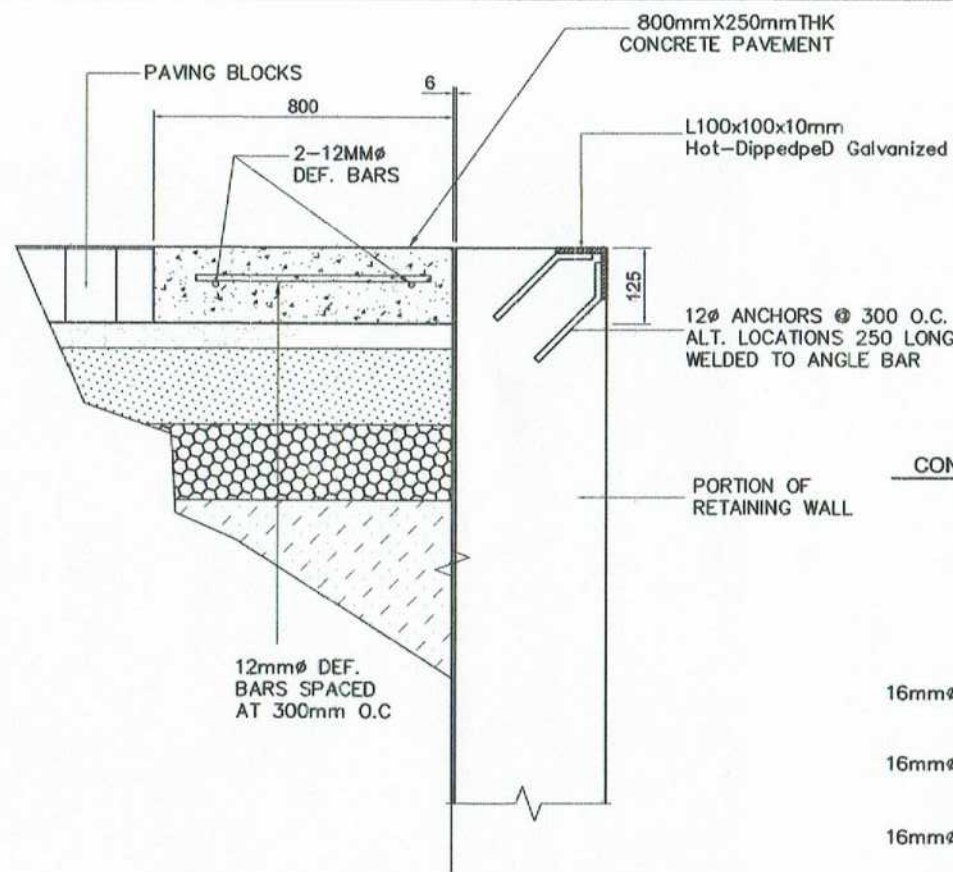


CONCRETE BLOCK



CORNER BLOCK

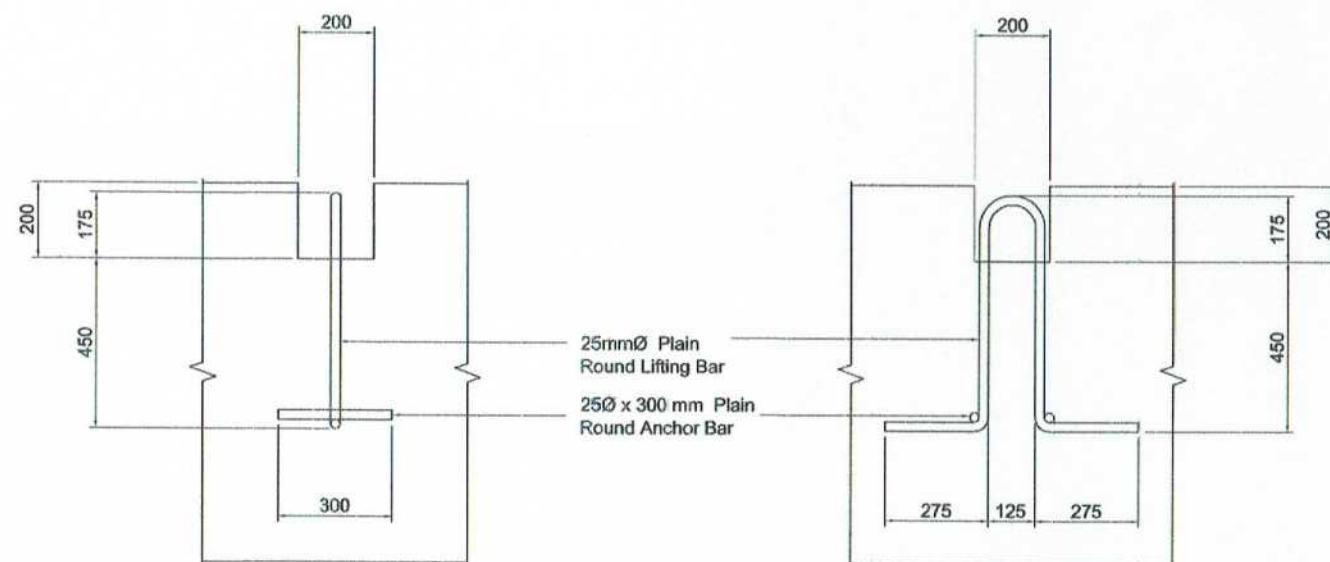
ISOMETRIC VIEW OF CONCRETE BLOCKS  
SCALE 1:80



TYPICAL CONSTRUCTION JOINT DETAIL  
SCALE 1:15

NOTE:

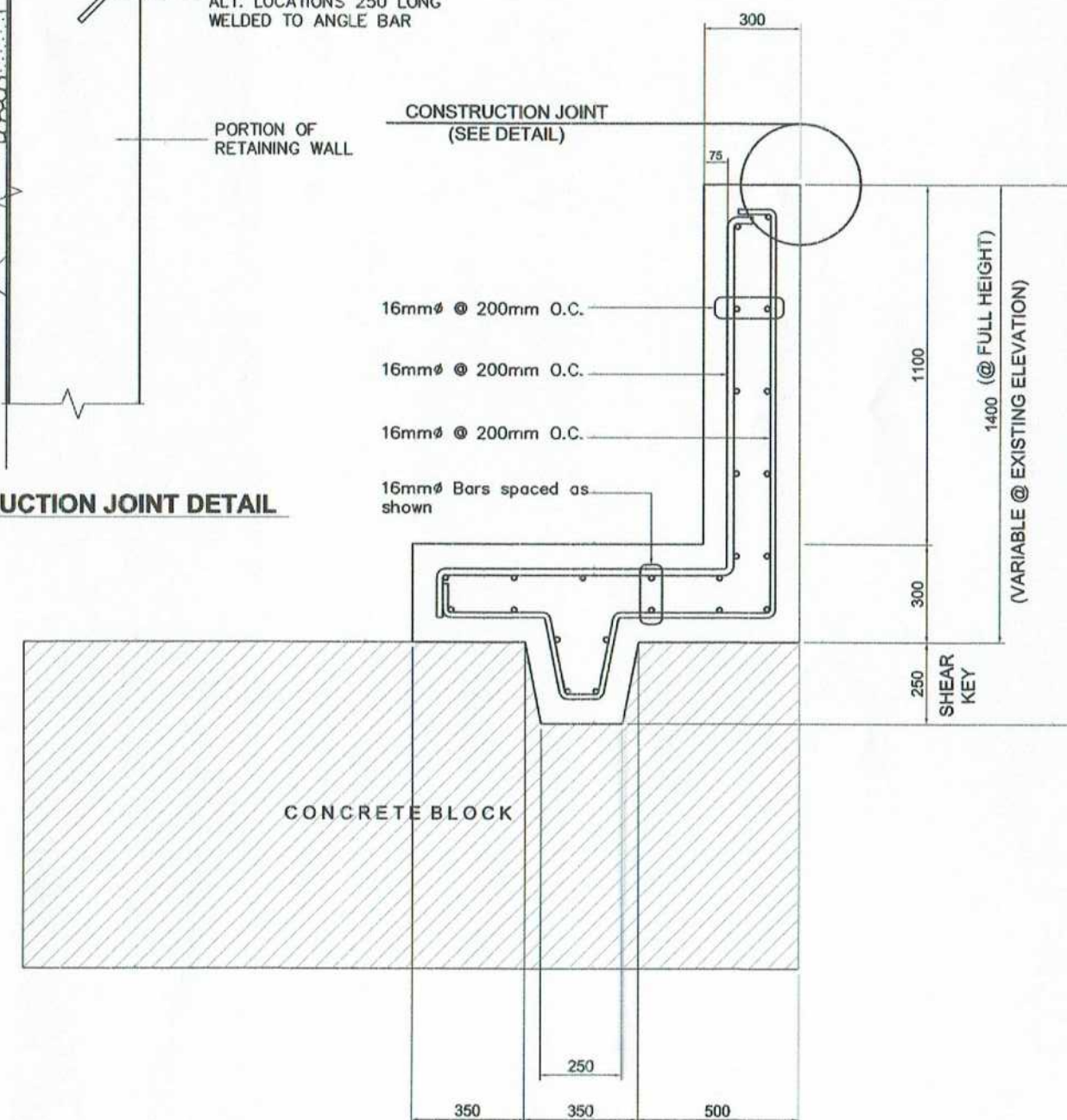
1. CONCRETE COVERING 75mm
2. USE MARINE EPOXY PRIMER (GRAY) TWO COATS TO ALL STEEL BARS PRIOR TO POURING OF CONCRETE.



SIDE SECTION

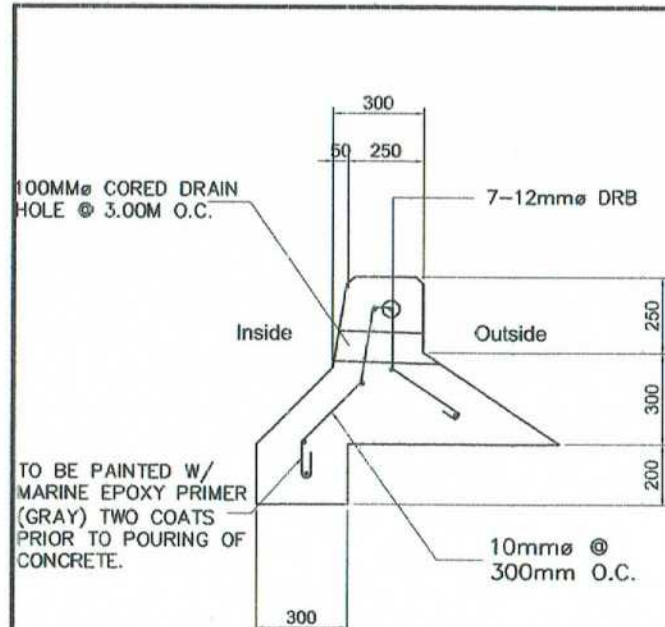
FRONT SECTION

CONCRETE BLOCK LIFTING HANDLE DETAIL  
SCALE 1:20

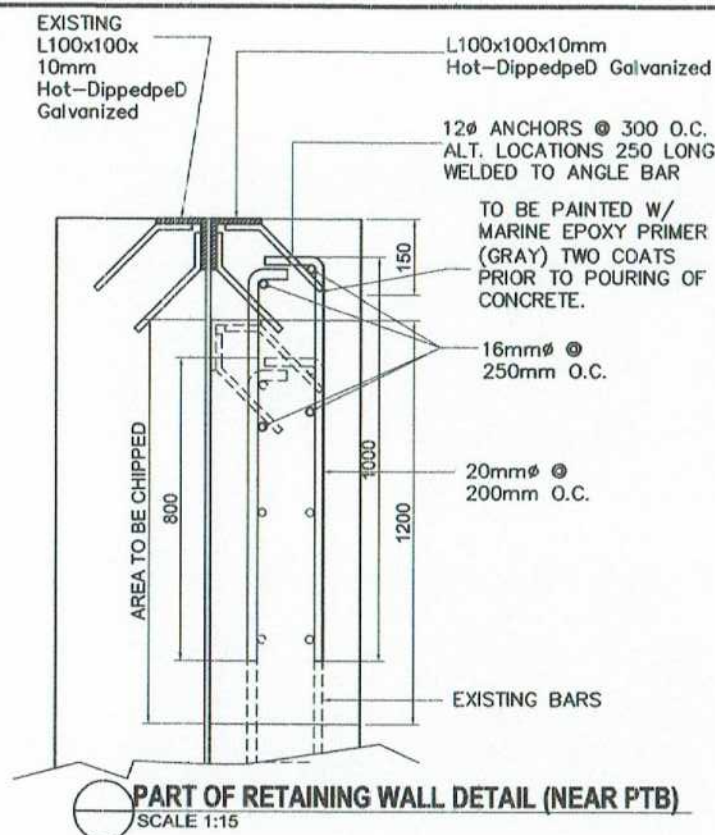


DETAIL OF RETAINING WALL  
SCALE 1:20





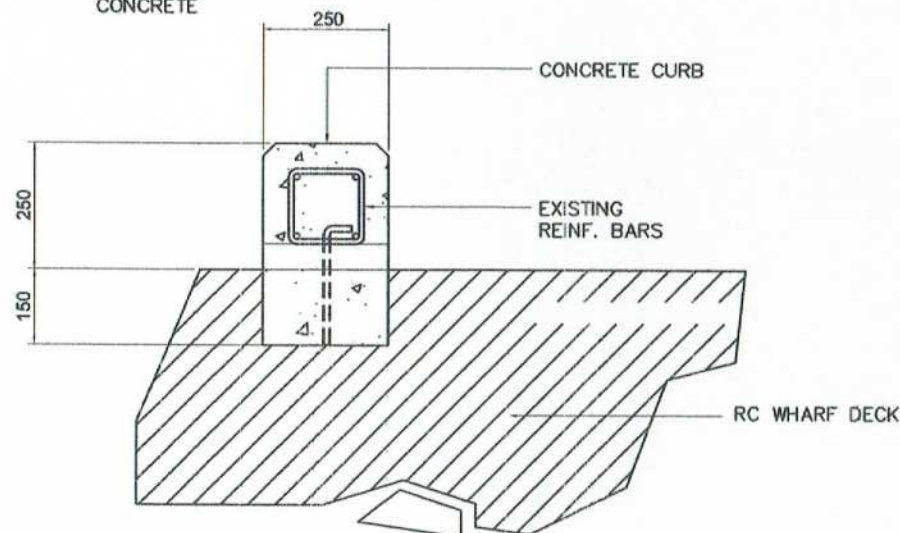
**CONC. CURB 2 DETAIL**  
SCALE 1:25



**PART OF RETAINING WALL DETAIL (NEAR PTB)**  
SCALE 1:15

NOTE:

1. EXISTING DAMAGED CONCRETE CURB TO BE CHIPPED AND APPLY RUST CONVERTER PRIOR TO POURING OF CONCRETE



SECTION

**CONC. CURB 1 DETAIL**  
SCALE 1:15

8 FEET



Makar Wharf, Brgy. Labangal, General Santos City

**Project:** Emergency Repair of Settled Back-up and Maneuvering Areas and Concrete Pavement Damaged by Magnitude 7.2 Earthquake

**Location:** Port of Glan, Glan, Sarangani Province

**Cost:** Php (contract amount)

**Fund Source/s:** Corporate Funds

IMPLEMENTING AGENCY: PHILIPPINES PORTS AUTHORITY  
CONTRACTOR: XXXXXXX  
BRIEF DESCRIPTION OF PROJECT: Construction of Back-up Area

PROJECT DETAILS:

PROJECT DATE			PROJECT STATUS				REMARKS
DURATION	STARTED	TARGET DATE OF COMPLETION	PERCENTAGE OF COMPLETION	AS OF (DATE)	COST INCURRED TO DATE	DATE COMPLETED	

FOR PARTICULARS OR COMPLAINTS ABOVE THIS PROJECT, PLEASE CONTACT THE REGIONAL OFFICE OR CLUSTER WHICH HAS AUDIT JURISDICTION ON THIS PROJECT:

COA REGIONAL OFFICE NO./CLUSTER: \_\_\_\_\_  
ADDRESS: \_\_\_\_\_  
CONTACT NO.: \_\_\_\_\_ OR TEXT COA CITIZEN'S DESK AT 0915-539-1975.

NOTE: TARPAULIN WHITE 8 FEET BY 8 FEET. RESOLUTION: 70 dpi. FONT: HELVETICA. FONT SIZE: MAIN INFORMATION - 3", SUB-INFORMATION - 1". FONT COLOR: BLACK. (BASE ON COA CIRCULAR NO. 2013-004 DATED JANUARY 30, 2013. "INFORMATION AND PUBLICITY ON PROGRAMS / PROJECTS / ACTIVITIES OF GOVERNMENT AGENCIES".

**COA STANDARD BILLBOARD DESIGN**  
SCALE 1:15



PROJECT TITLE  
EMERGENCY REPAIR OF SETTLED BACK-UP AND MANEUVERING AREAS AND CONCRETE PAVEMENT DAMAGED BY MAGNITUDE 7.2 EARTHQUAKE  
LOCATION  
PORT OF GLAN, GLAN, SARANGANI PROVINCE

PREPARED BY:  
JOECARLOT. SORIANO  
ENGINEERING ASSISTANT (J.O.)

CHECKED BY:  
CHARMAINE DJUNE MANTOYA  
SENIOR ENGINEER (J.O.)

REVIEWED BY:  
MARIA VIVIE M. TANCO  
ACTING PRINCIPAL ENGINEER A

RECOMMENDING APPROVAL:  
JAMESON L. LEE  
ESD MANAGER

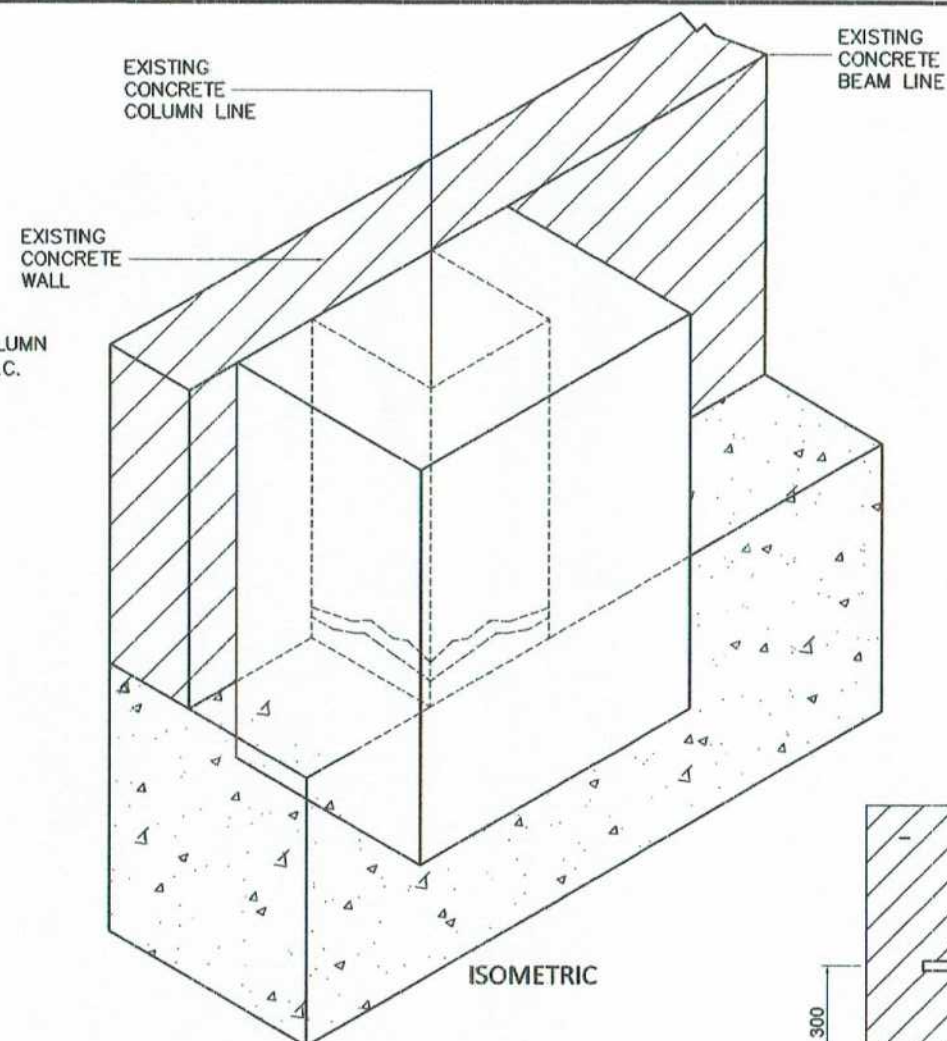
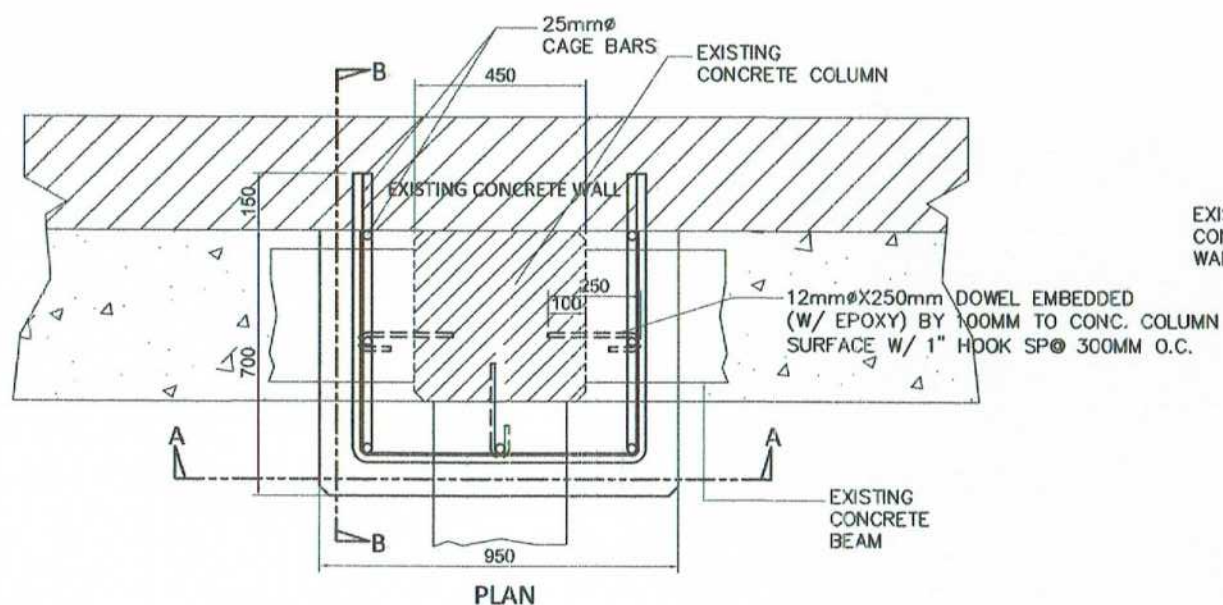
APPROVED BY:  
ATTY. CESAR M. DATAYA  
ACTING PORT MANAGER

SHEET CONTENT:  
1. CONCRETE CURB 1 DETAIL  
2. CONCRETE CURB 2 DETAIL  
3. COA STANDARD BILLBOARD DESIGN

DATE:

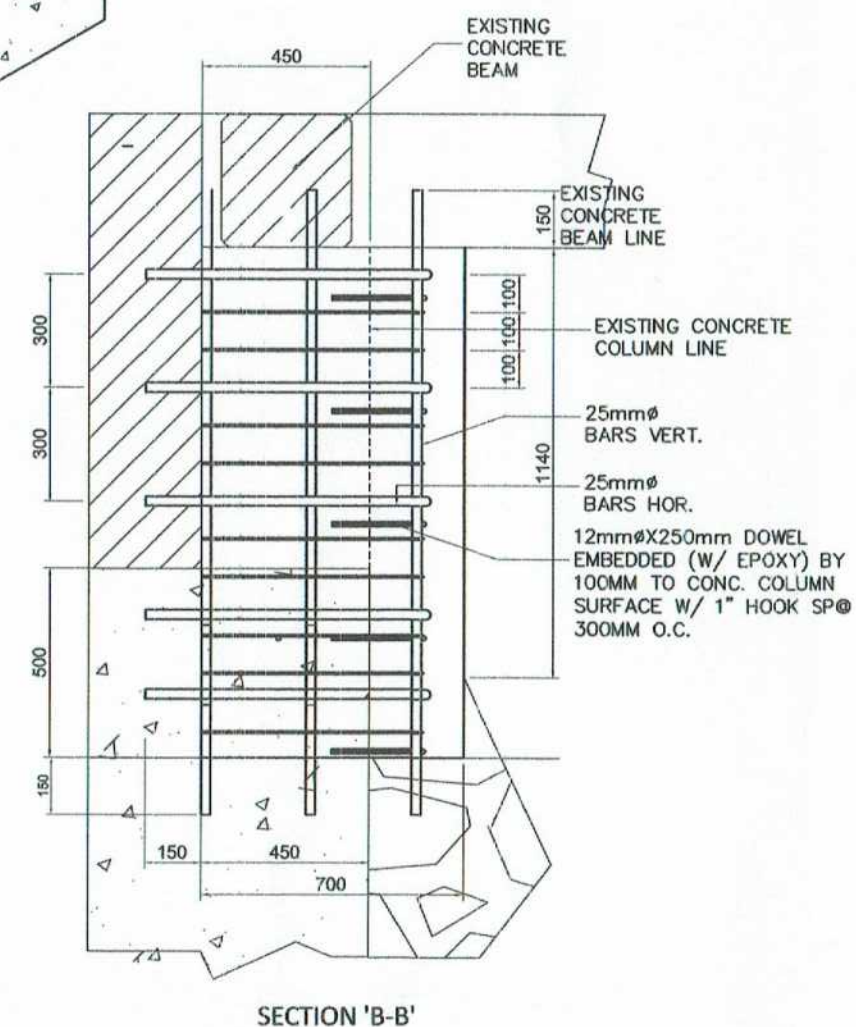
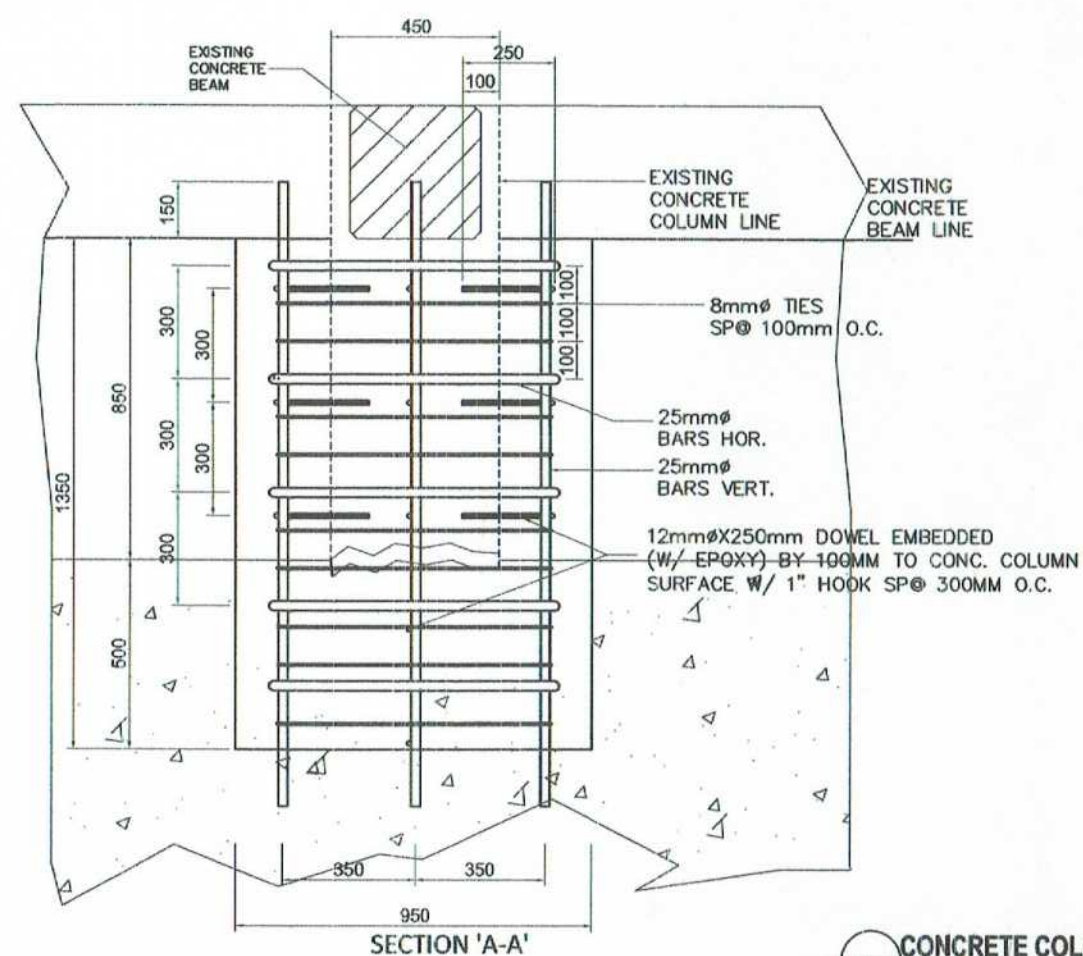
7/8





NOTE:

1. USE MARINE EPOXY PRIMER (GRAY) TWO COATS TO ALL STEEL BARS PRIOR TO POURING OF CONCRETE.



CONCRETE COLUMN JACKETING DETAIL (3 UNITS TYP.)  
SCALE 1:20