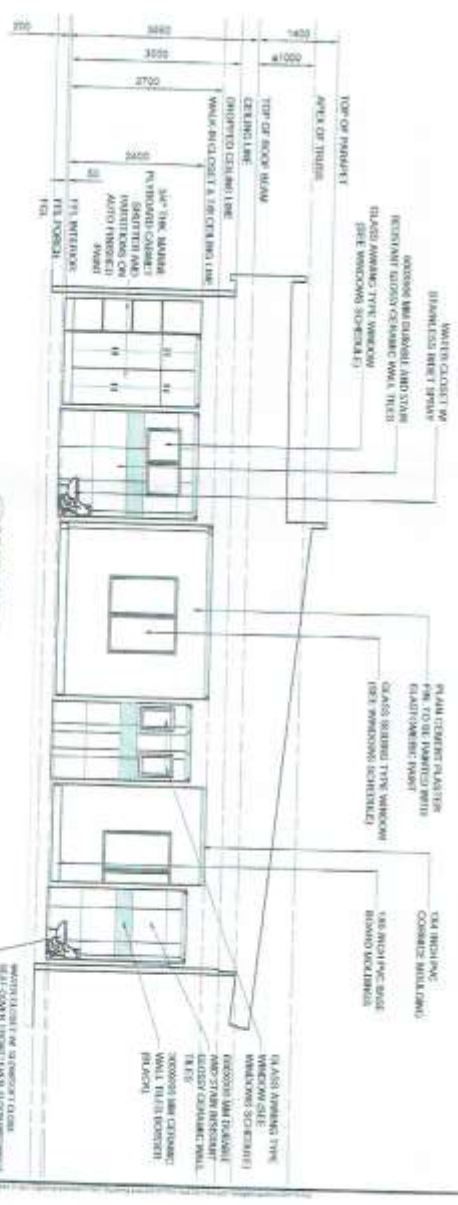


NOTES AND SPECS:

1. ALL WATER CLOSET W/ SLOW-CLOSE FLUSH VALVE, FRONT LEVER, FLOOR DISCHARGE, CLOSED-COUPLED, TOILET AND ROLLED FRONT SEAT, WITH ANTI-BACTERIAL, PROTECTION, STAIN-RESISTANT, LOW-MAINTENANCE AND WITH STAINLESS STEEL SIFRY.
2. PROVIDE STAINLESS STEEL SOAP HOLDER AND TISSUE HOLDER AT THE TOILET & ENTRY AND POWER ROOM.

SECTION THRU A-A SCALE 1/8" = 1'-0"



SECTION THRU B-B SCALE 1/8" = 1'-0"

		<p>PORT OF GENERAL SANTOS CITY GENERAL SANTOS CITY</p>	
<p>PROJECT TITLE: REHABILITATION OF PORT OF GENERAL SANTOS CITY QUARTER AND POWER SYSTEM AT PORT OF GENERAL SANTOS CITY</p>		<p>DATE: 5/10/2024</p>	
<p>DESIGNED BY: ARCHITECT: [Signature] ENGINEER: [Signature]</p>		<p>CHECKED BY: ARCHITECT: [Signature] ENGINEER: [Signature]</p>	
<p>APPROVED BY: ARCHITECT: [Signature] ENGINEER: [Signature]</p>		<p>DATE: 5/10/2024</p>	
<p>PROJECT NO.: 50/76</p>		<p>DATE: 5/10/2024</p>	

SCHEDULE OF FLOOR FINISH					REVISIONS		DATE	
LOCATION	AREA (SQ.M)	Description	Spec. Ref.	Color	Remarks	NO. OF SHEETS	DATE	DATE
1. LIVING AREA	11.81	Decorative non-slab, water and stain resistant homogeneous ceramic tiles	600X600	Light beige color		D1	1	
2. HALLWAY	24.30	Decorative non-slab, water and stain resistant homogeneous ceramic tiles	600X600	Light beige color		D2	1	
3. DINING AREA	11.58	Decorative non-slab, water and stain resistant homogeneous ceramic tiles	600X600	Light beige color		D3	1	
4. KITCHEN AREA	10.31	Decorative non-slab, water and stain resistant homogeneous ceramic tiles	600X600	Light beige color		D4	1	
5. MASTER'S BEDROOM	22.31	Decorative non-slab, water and stain resistant homogeneous ceramic tiles	600X600	Light beige color		D5	1	
6. MASTER'S BATH	5.50	Decorative non-slab, water and stain resistant homogeneous ceramic tiles	600X600	Light beige color		D6	1	
7. MASTER'S TOILET	5.50	Decorative non-slab, water and stain resistant homogeneous ceramic tiles	600X600	Light beige color		D7	1	
8. BEDROOM NO. 1	18.23	Decorative non-slab, water and stain resistant homogeneous ceramic tiles	600X600	Light beige color		D8	1	
9. BEDROOM NO. 2	4.00	Decorative non-slab, water and stain resistant homogeneous ceramic tiles	600X600	Light beige color		D9	1	
10. POWER ROOM	2.40	Decorative non-slab, water and stain resistant homogeneous ceramic tiles	600X600	Light beige color		D10	1	
11. LIVING AREA	15.30	Decorative non-slab, water and stain resistant homogeneous ceramic tiles	600X600	Light beige color		D11	1	
12. MASTER'S BEDROOM	12.85	Decorative non-slab, water and stain resistant homogeneous ceramic tiles	600X600	Light beige color		D12	1	
13. CLOSET	22.35	Decorative non-slab, water and stain resistant homogeneous ceramic tiles	600X600	Light beige color		D13	1	
14. ENTRY PORCH	6.86	Decorative non-slab, water and stain resistant homogeneous ceramic tiles	600X600	Light beige color		D14	1	
15. LAUNDRY	11.07	Decorative non-slab, water and stain resistant homogeneous ceramic tiles	600X600	Light beige color		D15	1	

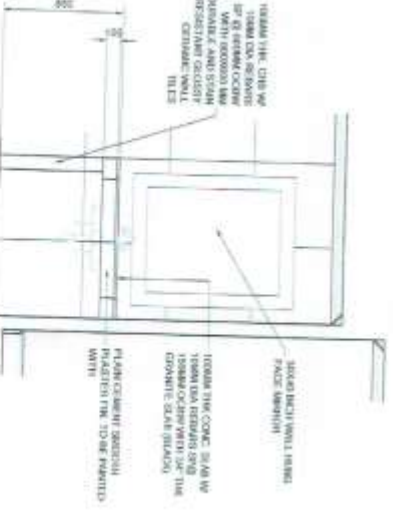
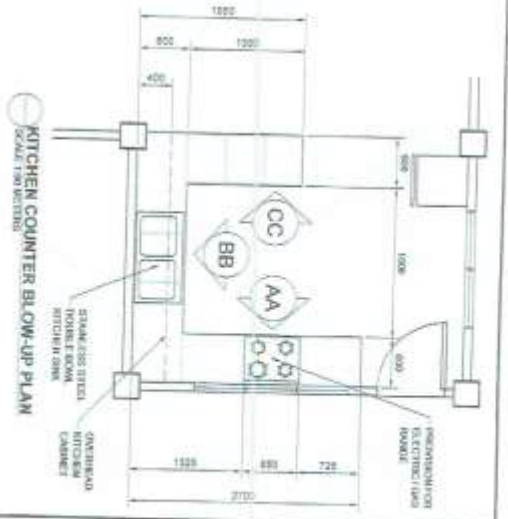
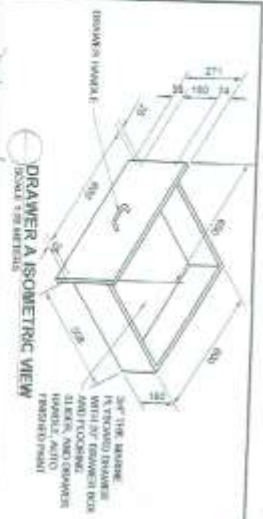
DEPARTMENT OF PUBLIC WORKS AND HIGHWAYS
NATIONAL CAPITAL REGION
OFFICE OF THE REGIONAL ENGINEER
METRO MANILA

PROJECT: RECONSTRUCTION OF THE MAIN ENTRANCE OF THE NATIONAL CAPITAL COMMISSION (NCC) BUILDING, 1000 P. DEL ROSARIO STREET, MANILA, METRO MANILA.

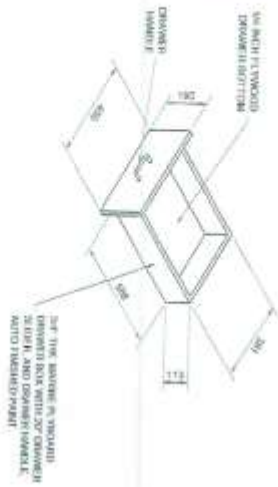
DESIGNED BY:

CHECKED BY:

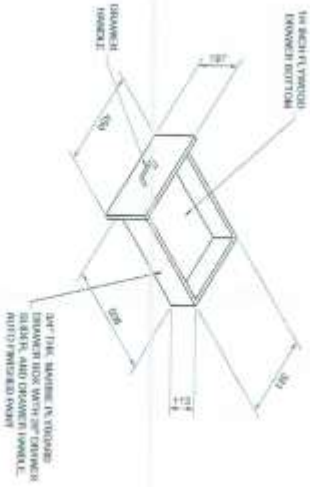
DATE: 5/1/76



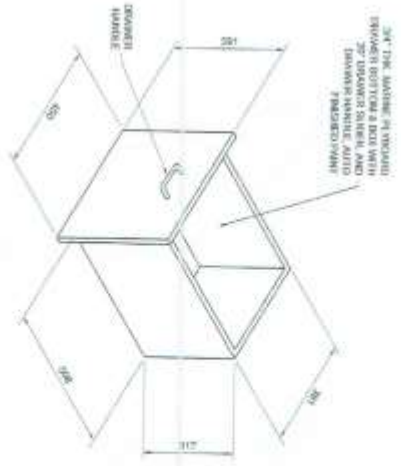
	<p>REPRODUCTION OF DRAWING FOR OFFICIAL USE ONLY (SHEET) AND DRAWING SET FOR OFFICIAL USE ONLY UNIVERSITY OF THE PHILIPPINES - DILIMAN GENERAL SERVICES DIVISION</p>	<p>DESIGNED BY: </p>	<p>CHECKED BY: </p>	<p>APPROVED BY: </p>	<p>DATE: </p>	<p>ATTY. GENERAL: </p>	<p>DATE: 5/3/76</p>
--	--	----------------------	---------------------	----------------------	---------------	------------------------	---------------------



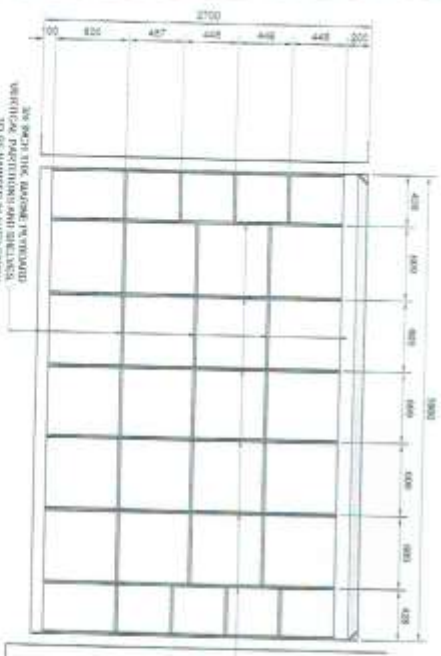
DRAWER 4 ISOMETRIC VIEW
SCALE: 1/8\"/>



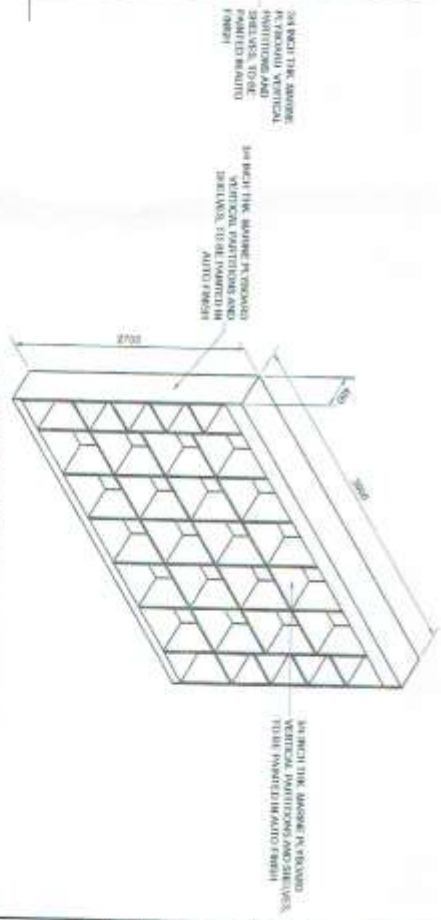
DRAWER 5 ISOMETRIC VIEW
SCALE: 1/8\"/>



DRAWER 6 ISOMETRIC VIEW
SCALE: 1/8\"/>



LIBRARY BOOKSHELVES ELEVATION
SCALE: 1/8\"/>



LIBRARY BOOKSHELVES ISOMETRIC VIEW
SCALE: 1/8\"/>

		PROJECT TITLE: REPAIR AND MAINTENANCE OF LIBRARY BOOKSHELVES, DIVISION OFFICE - MARIKINA CITY		DESIGNED BY: 		CHECKED BY: 		DATE: 5/6/76	
PROJECT NO.: 100-100-100-100		PROJECT LOCATION: DIVISION OFFICE - MARIKINA CITY		APPROVED BY: 		DATE: 5/6/76		REVISIONS: 1. REVISION 1: 5/6/76 2. REVISION 2: 5/6/76	