
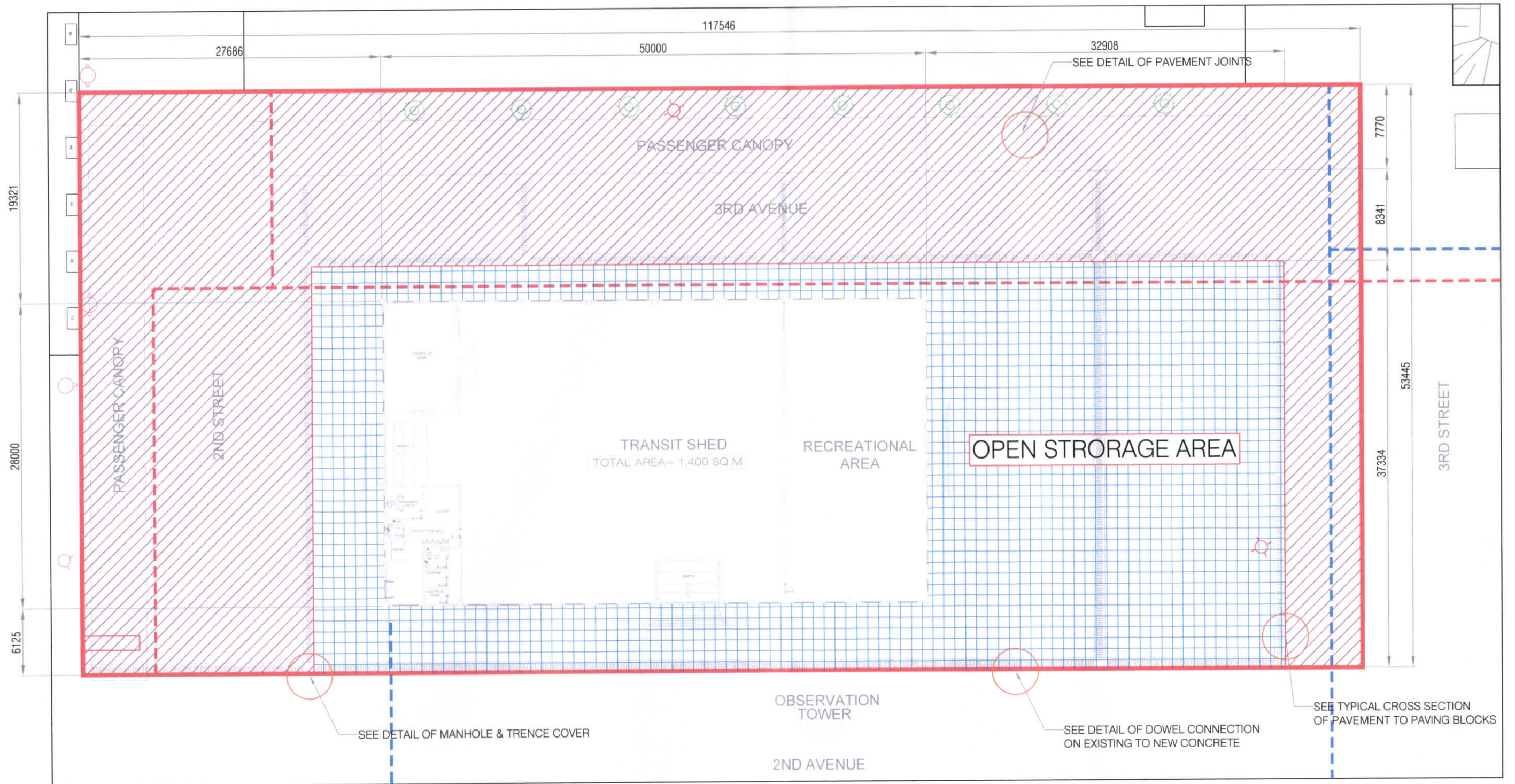


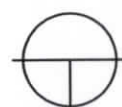
VICINITY PLAN
SCALE NTS.

	REVISION	TITLE:	REPAIR OF PAVEMENT AT BLOCK 7				ARCHITECTURAL	SHEET NO.
		LOCATION:	PORT OF ILIGAN, ILIGAN CITY				SHEET CONTENTS	<div>1</div> <div>6</div>
		PREPARED BY:	CHECKED BY:	RECOMMENDED BY:	APPROVED:	<ul style="list-style-type: none">• LOCATION PLAN• VICINITY PLAN		
		DENNIS S. CAMBAYA Engineering Assistant A	COLIN KAY P. CAJOTE Supervising Engineer A/Asst. Principal Engineer A	JOEL B. ESCALA ESD Manager	MEDARDO SOSBRADO, JR. Asst. Port Manager			




LEGEND:

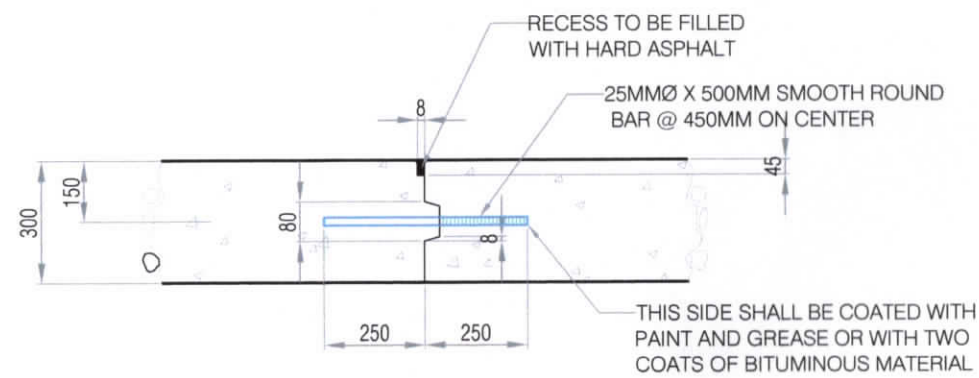
- ACCESS ROADS AND PASSAGEWAYS
- OPEN STORAGE AREA
- WATERLINE
- FIRE HYDRANT LINE
- EXISTING DRAINAGE CANAL (TO BE REPAIRED)



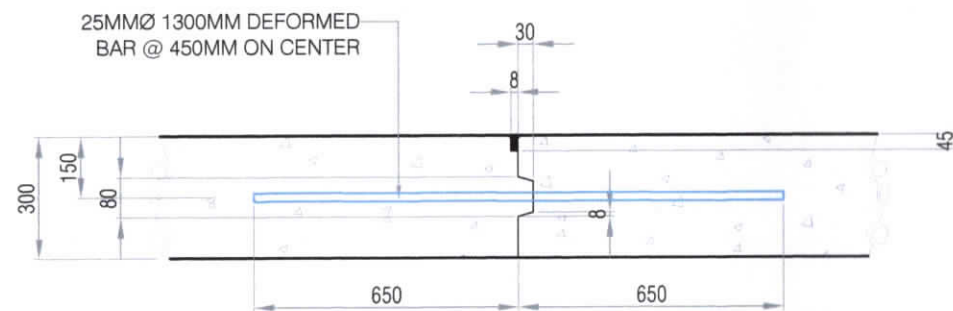
SITE DEVELOPMENT PLAN

SCALE: 1:400

	REVISION	TITLE:	REPAIR OF PAVEMENT AT BLOCK 7				ARCHITECTURAL	SHEET NO. <div>2 6</div>
		LOCATION:	PORT OF ILIGAN, ILIGAN CITY				SHEET CONTENTS	
		PREPARED BY:	CHECKED BY:	RECOMMENDED BY:	APPROVED:	• SITE DEVELOPMENT PLAN		
		DENNIS S. CAMBAYA Engineering Assistant A	COLIN KAY R. PAJOTE Supervising Engineer A/Actg./Principal Engineer A	JOEL B. ESCALA ESD Manager	MEDARDO L. SOSBRADO, JR. Acting Port Manager			

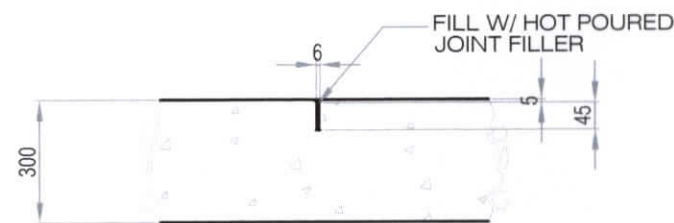


TRANSVERSAL CONSTRUCTION JOINT

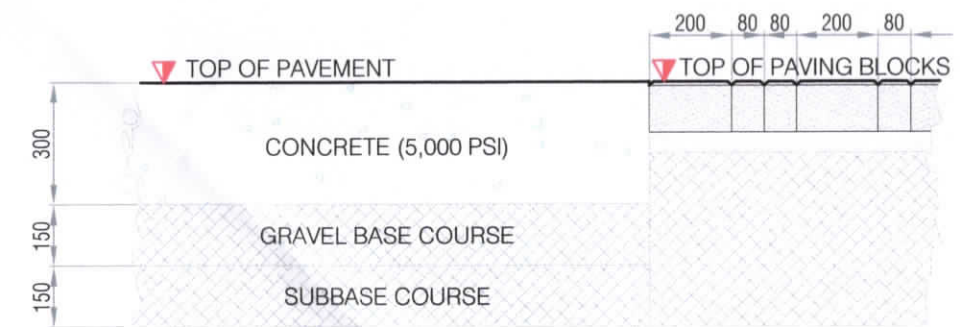


LONGITUDINAL CONSTRUCTION JOINT

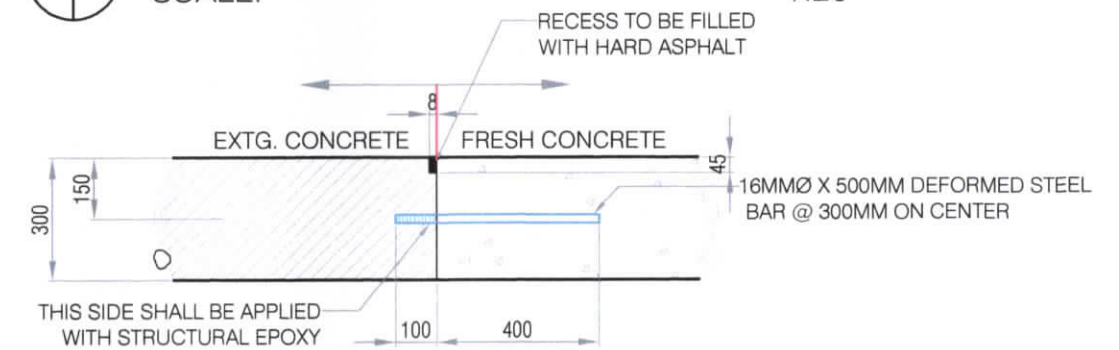
DETAIL OF PAVEMENT JOINTS
SCALE: 1:20



TRANSVERSE CONTRACTION JOINT
SCALE: 1:20



TYPICAL CROSS SECTION OF
OF PAVEMENT TO PAVING BLOCKS
SCALE: 1:20



DETAIL OF DOWEL CONNECTION
ON EXISTING TO NEW CONCRETE
SCALE: 1:20



DETAIL OF REINFORCEMENT
OF OPEN STORAGE AREA
SCALE: 1:20



REVISION

TITLE:

REPAIR OF PAVEMENT AT BLOCK 7

LOCATION:

PORT OF ILIGAN, ILIGAN CITY

PREPARED BY:

DENNIS S. CAMBAYA
Engineering Assistant A

CHECKED BY:

COLIN KAY R. CAJOTE
Supervising Engineer A/Actg. Principal Engineer A

RECOMMENDED BY:

JOEL B. ESCALA
ESD Manager

APPROVED:

MEDARDO I. SOSBRADO, JR.
Acting Port Manager

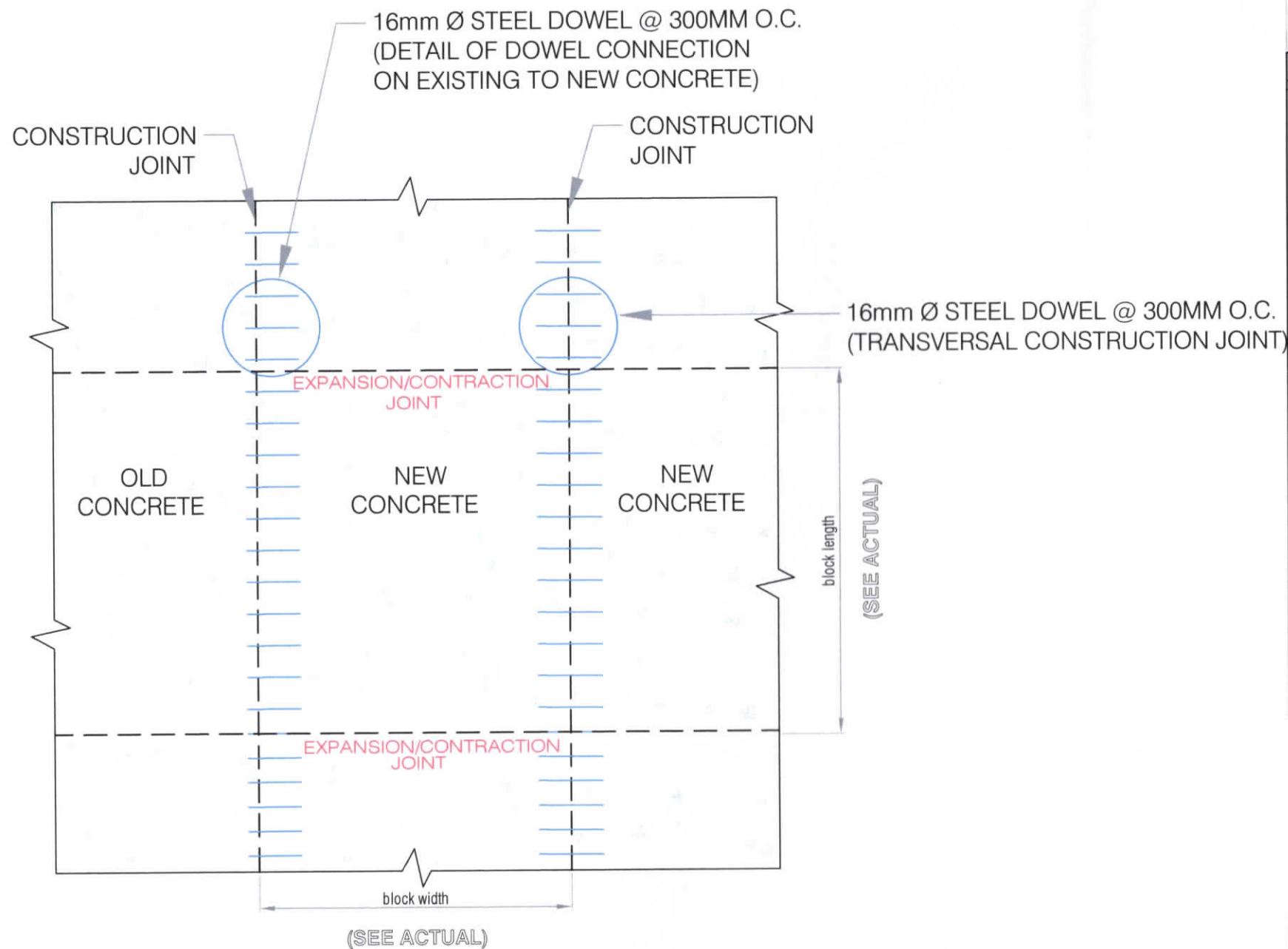
STRUCTURAL

SHEET CONTENTS

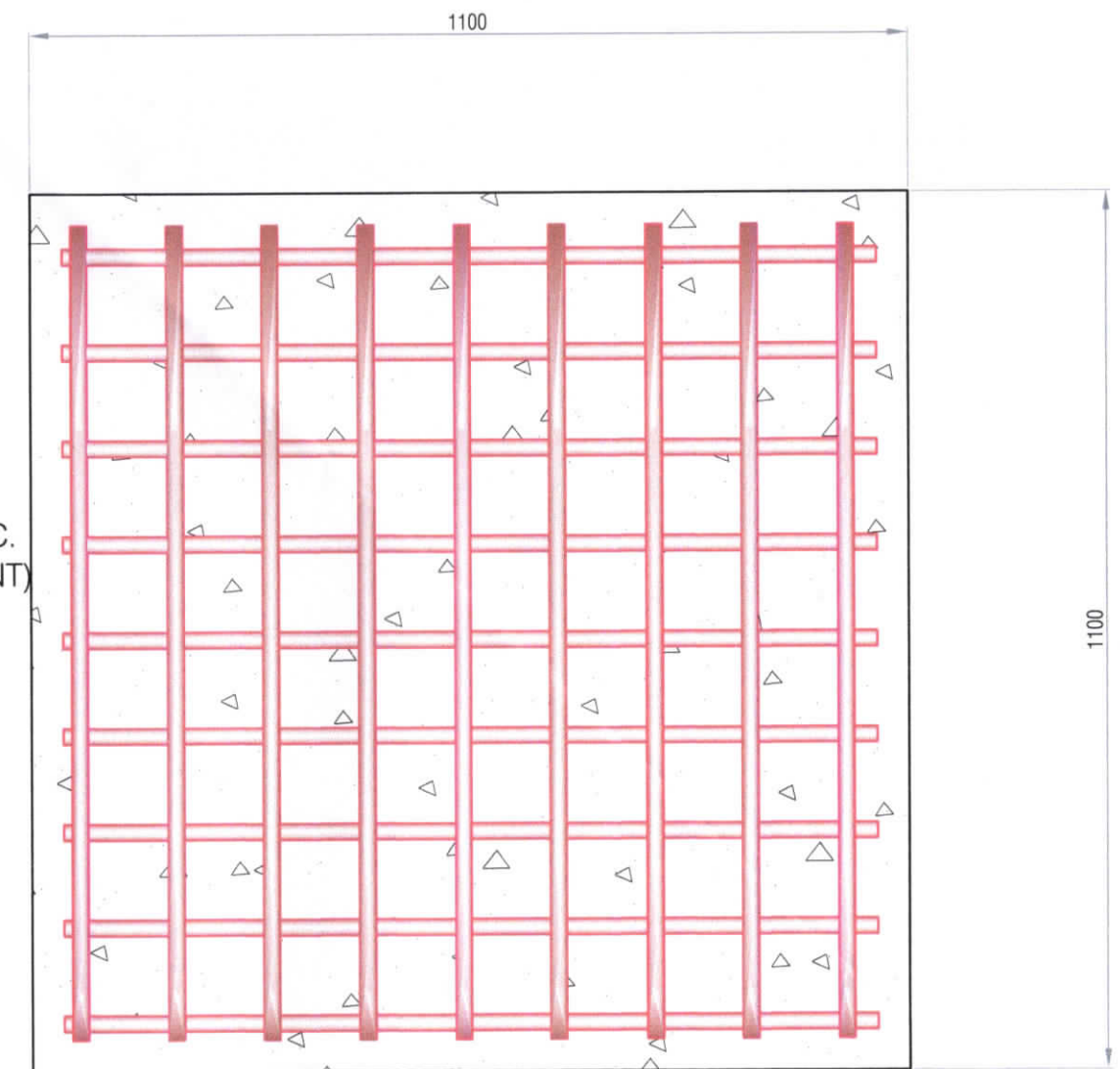
- DETAIL OF PAVEMENT JOINTS
- TRANSVERSE CONTRACTION JOINT
- TYPICAL CROSS SECTION OF OF PAVEMENT TO PAVING BLOCKS
- DETAIL OF DOWEL CONNECTION ON EXISTING TO NEW CONCRETE
- DETAIL OF REINFORCEMENT OF OPEN STORAGE AREA

SHEET NO.

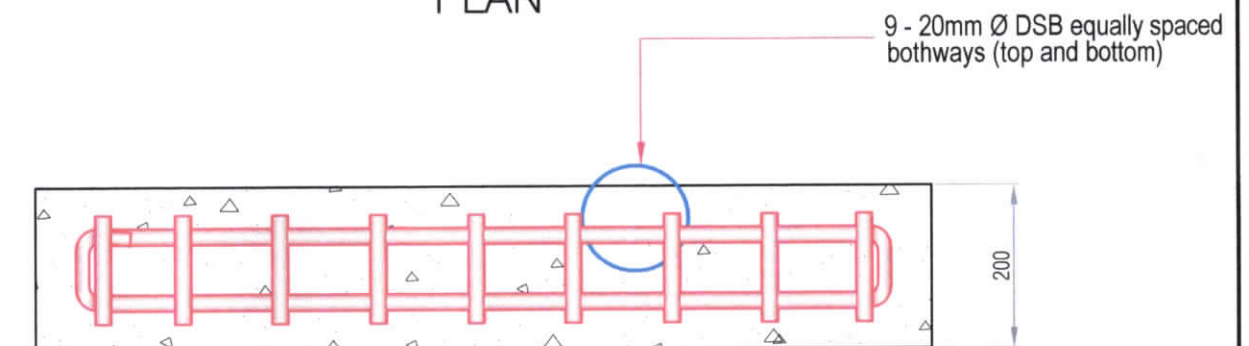
3
6



REINFORCEMENT DETAILS
ON EXISTING TO NEW CONCRETE
SCALE: NTS.



PLAN

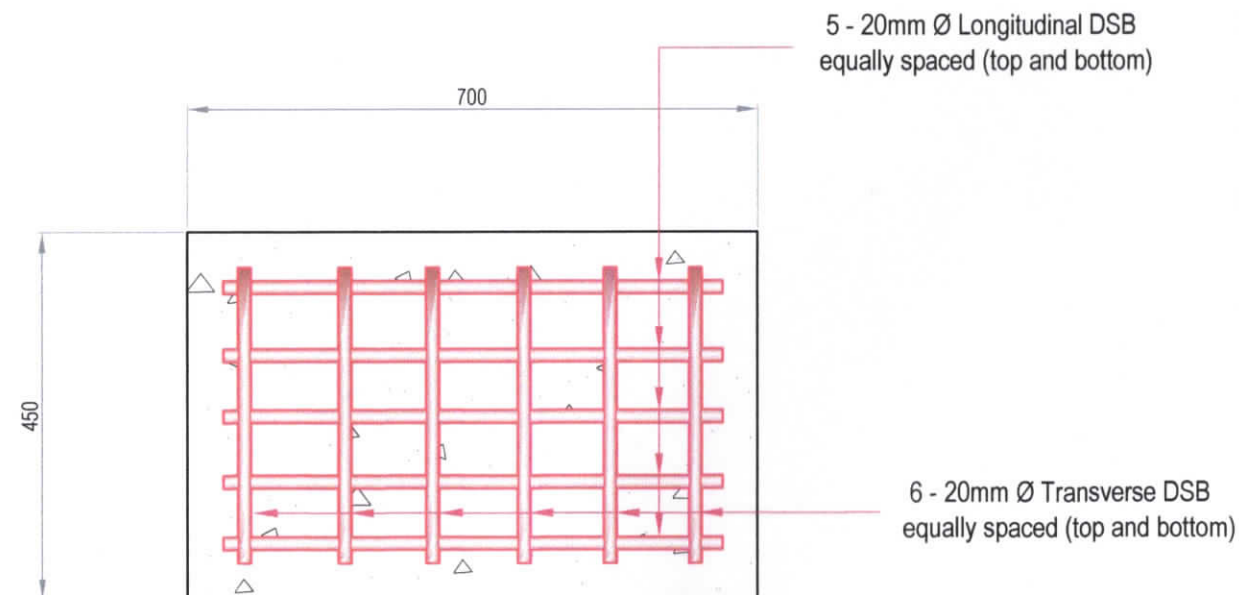


SECTION

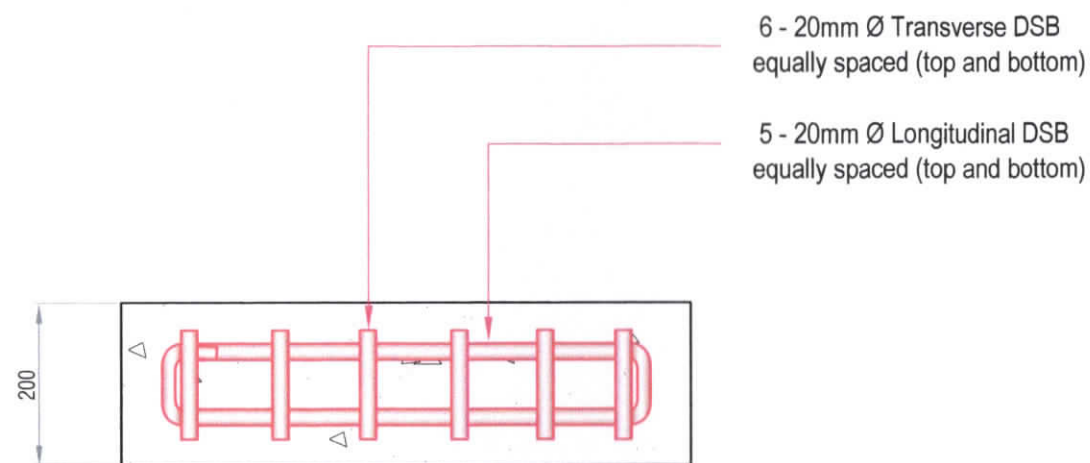
REINFORCEMENT DETAILS
OF PRE-CAST MANHOLE COVER 1
SCALE: 1:10



REVISION	TITLE: REPAIR OF PAVEMENT AT BLOCK 7				STRUCTURAL	SHEET NO.
	LOCATION: PORT OF ILIGAN, ILIGAN CITY				SHEET CONTENTS	
	PREPARED BY:	CHECKED BY:	RECOMMENDED BY:	APPROVED:	<ul style="list-style-type: none"> REINFORCEMENT DETAILS OF OPEN STORAGE AREA REINFORCEMENT DETAILS OF PRE-CAST MANHOLE COVER 1 	<div>4</div> <div>6</div>
	DENNIS S. CAMBAYA Engineering Assistant A	COLIN KAY R. CAUOTE Supervising Engineer A/Actg. Principal Engineer A	JOEL B. ESCALA ESD Manager	MEDARDO L. SOSBRADO, JR. Acting Port Manager		

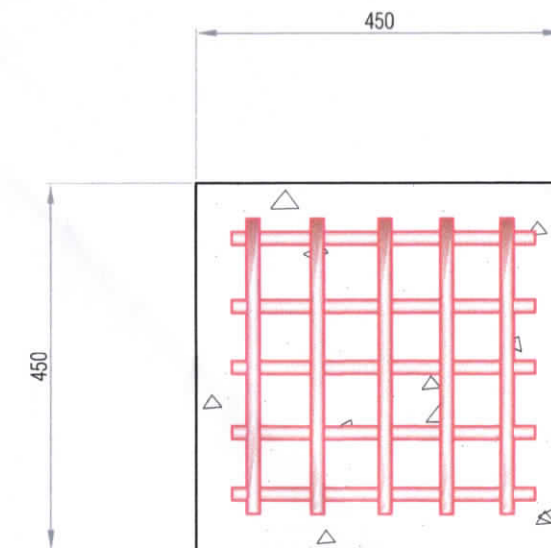


PLAN

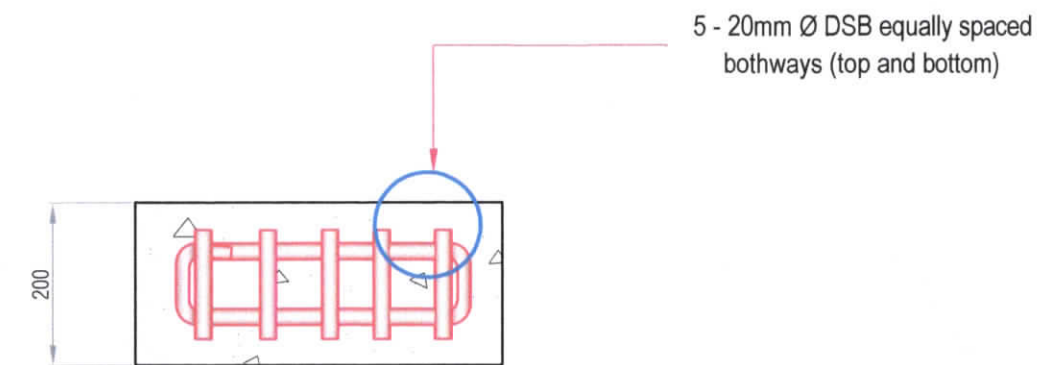


SECTION

REINFORCEMENT DETAILS
OF PRE-CAST MANHOLE COVER 2
SCALE: 1:10



PLAN



SECTION

REINFORCEMENT DETAILS
OF PRE-CAST MANHOLE COVER 3
SCALE: 1:10



REVISION

TITLE:

REPAIR OF PAVEMENT AT BLOCK 7

LOCATION:

PORT OF ILIGAN, ILIGAN CITY

PREPARED BY:

DENNIS S. CAMBAYA
Engineering Assistant A

CHECKED BY:

COLIN KAY R. CAJOTE
Supervising Engineer A/Actg. Principal Engineer A

RECOMMENDED BY:

JOEL B. ESCALA
ESD Manager

APPROVED:

MEDARDO T. SOSBRADO, JR.
Acting Port Manager

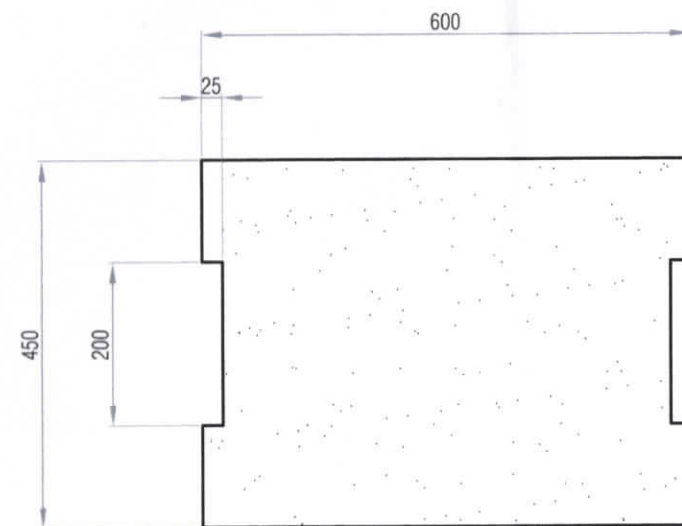
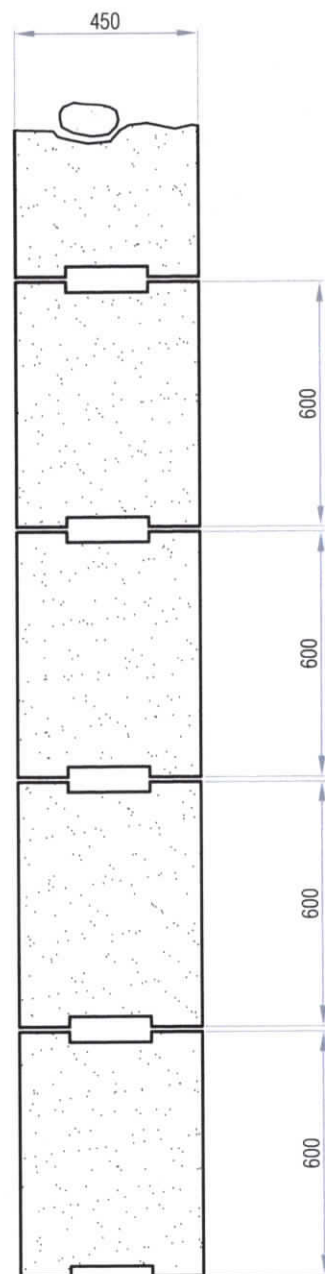
STRUCTURAL

SHEET CONTENTS

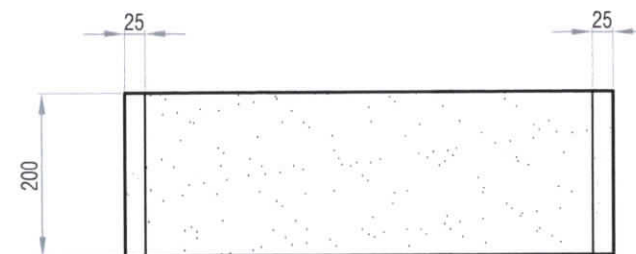
- REINFORCEMENT DETAILS OF PRE-CAST MANHOLE COVER 2
- REINFORCEMENT DETAILS OF PRE-CAST MANHOLE COVER 3

SHEET NO.

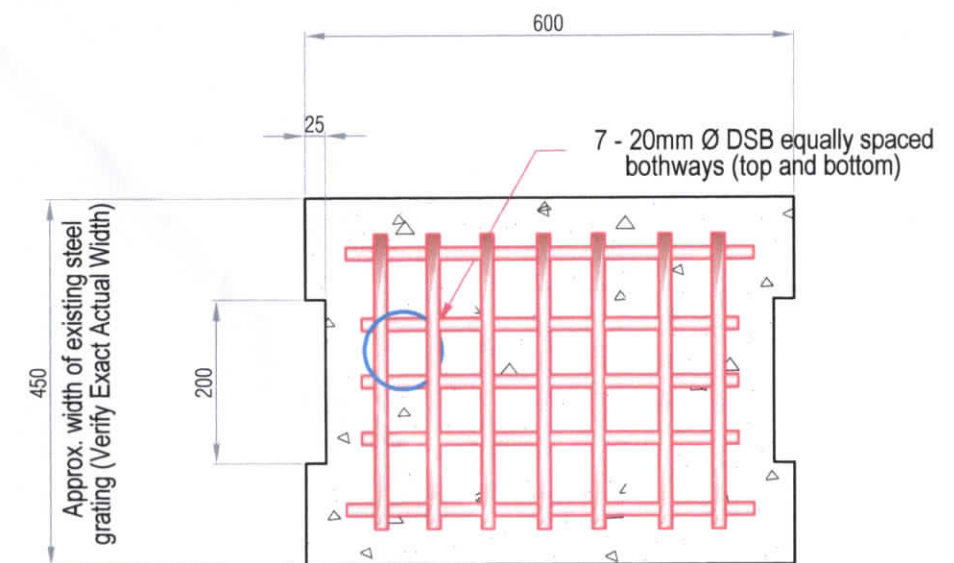
5
6



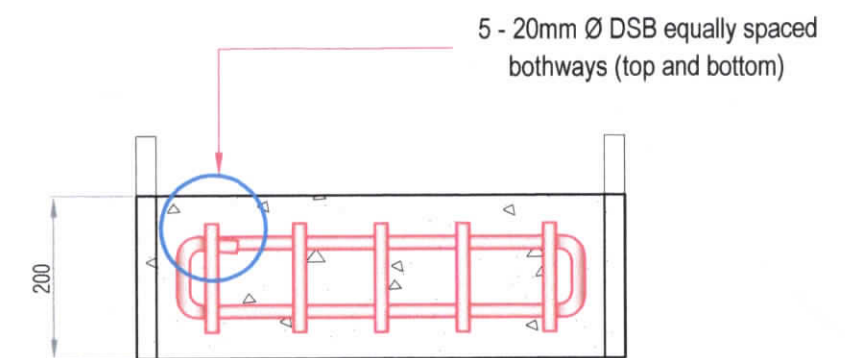
PLAN



ELEVATION



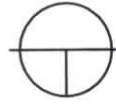
PLAN



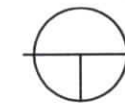
SECTION



LAYOUT OF PRE-CAST TRENCH COVER
SCALE: 1:20



DETAIL OF PRE-CAST TRENCH COVER
SCALE: 1:10



REINFORCEMENT DETAILS
OF PRE-CAST TRENCH COVER
SCALE: 1:10



REVISION

TITLE:

REPAIR OF PAVEMENT AT BLOCK 7

LOCATION:

PORT OF ILIGAN, ILIGAN CITY

PREPARED BY:

DENNIS S. CAMBAYA
Engineering Assistant A

CHECKED BY:

COLIN KAY B. CAJOTE
Supervising Engineer A/Actg. Principal Engineer A

RECOMMENDED BY:

JOEL B. ESCALA
ESD Manager

APPROVED:

MEDARDO I. SOSBRADO, JR.
Acting Port Manager

STRUCTURAL

SHEET CONTENTS

- LAYOUT OF PRE-CAST TRENCH COVER
- DETAIL OF PRE-CAST TRENCH COVER
- REINFORCEMENT DETAILS OF PRE-CAST TRENCH COVER

SHEET NO.

6
6