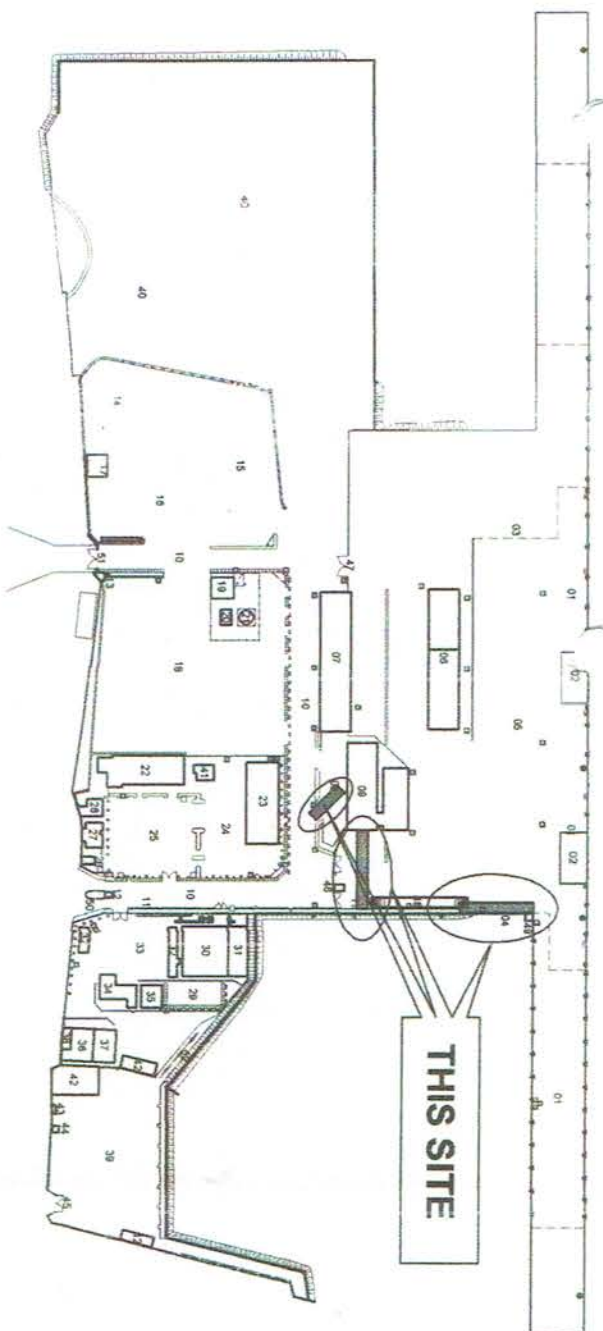


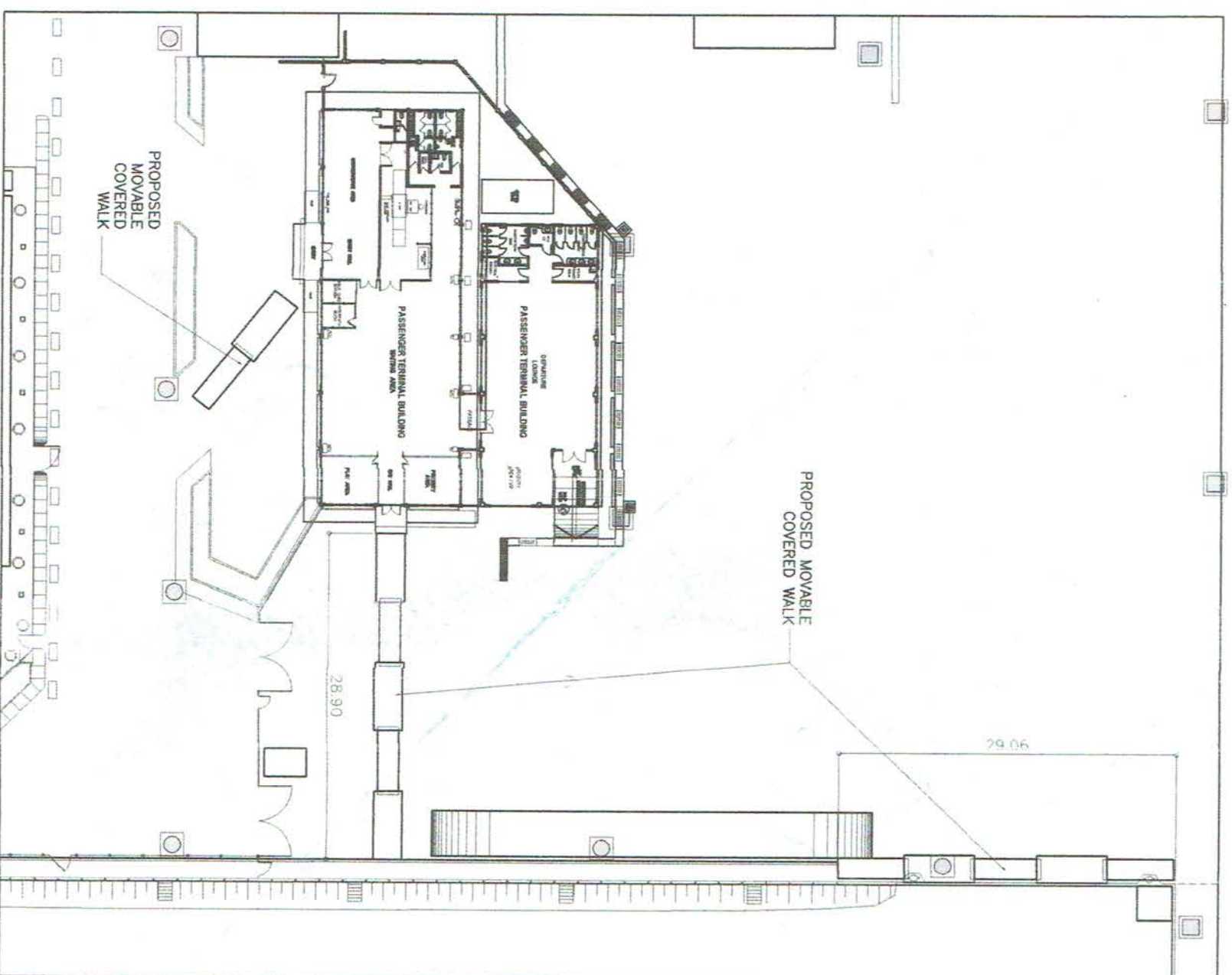
MARK	Description of Area
01	RT-Walk
02	ROGO
03	Secondary Bath SW
04	Secondary Bath NE
05	Open Storage/Loading Area
06	Warehouse No. 1 (Frontal Side)
07	Warehouse 2 Area
08	Passenger Terminal Area
09	Passenger Terminal Building
10	Access Road
11	Covered Walk
12	Entrance Courtyard
13	East Courtyard
14	Storage Area
15	CV (Ramp) (Loading)
16	Container Yard
17	CPA Building
18	CV (AISC, Sapsa, PPRC)
19	Ground Reserve
20	Turn House
21	Overhead Water Tank
22	PCO Building
23	PPAS Building
24	Airplane Parking Area
25	Parking Area
26	Port Police Office
27	Port Police Quarters
28	Detention Cell
29	Recreation/Screen Area
30	PPA Administration Building
31	Green House (Lumber Storage)
32	Parking Shed
33	Parking Area
34	Piers Office
35	VIP Guesthouse
36	PMO Water Pool
37	PMO Storage
38	Guest House
39	Back-up Area Morning
40	Back-up Area Swimming
41	Temporary Facility
42	Garden/Landscaping
43	Material Recovery Facility
44	Control Room
45	Northwing Back-up Area Gate
46	Inner Entrance Control Gate
47	Inner East Control Gate
48	Weighing Bridge
49	NAMRIA Tides Station
50	Main Entrance Gate
51	Main Exit Gate
52	Seaside Promenade



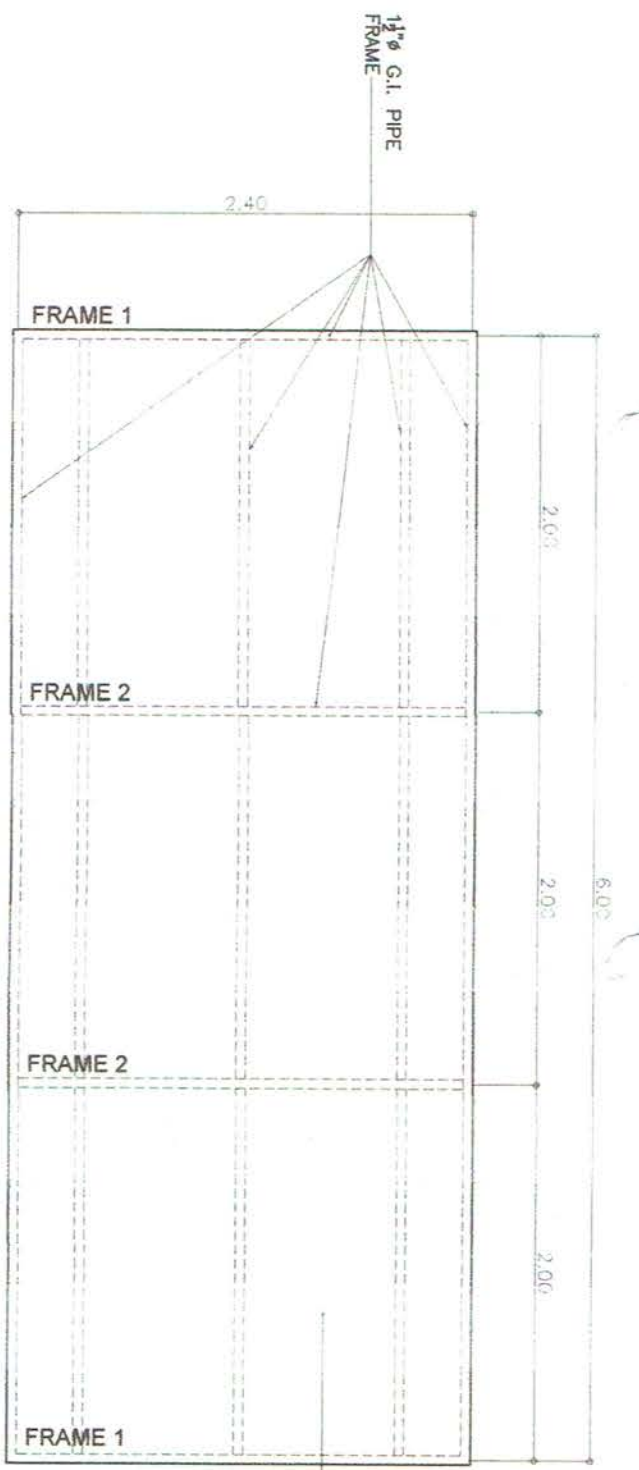
LOCATION PLAN
SCALE 1:3000 M



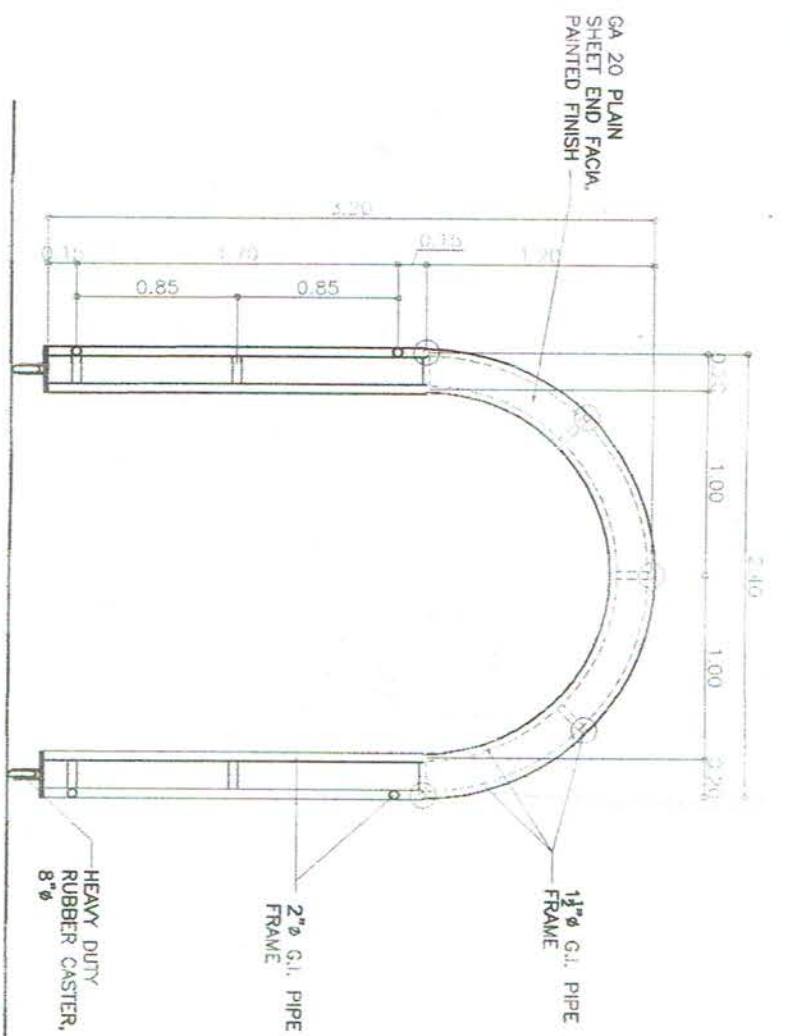
ISOMETRIC VIEW
SCALE 1:NOT TO SCALE



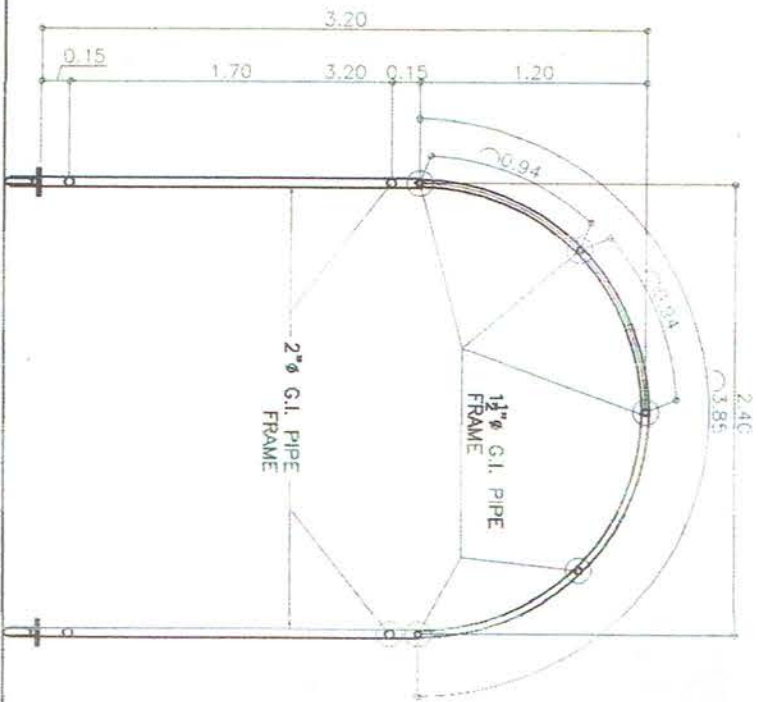
SITE PLAN
SCALE 1:500 M



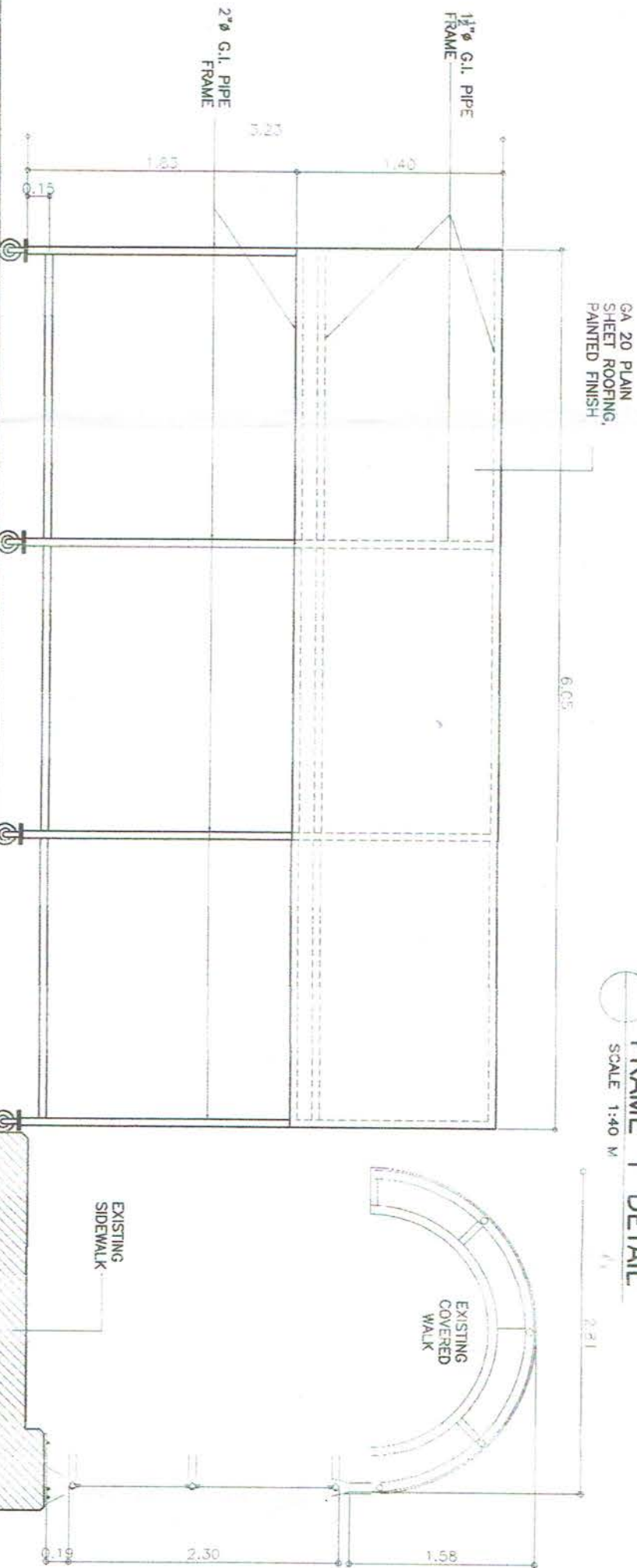
COVERED WALK 1 – TOP VIEW
SCALE 1:40 M
6 UNITS REQUIRED



FRAME 1 DETAIL
SCALE 1:40 M



FRAME 2 DETAIL
SCALE 1:40 M



TYPICAL SIDE VIEW
SCALE 1:40 M

PROJECT TITLE AND LOCATION

DRAWN BY

PREPARED BY

RECOMMENDING APPROVAL

APPROVED

SHEET CONTENTS

SHEET NO.

PROPOSED MOVABLE COVERED WALK
PORT OF PUERTO PRINCESA, PALAWAN

ALAN P. ABOROT
SUPERVISING ENGINEER

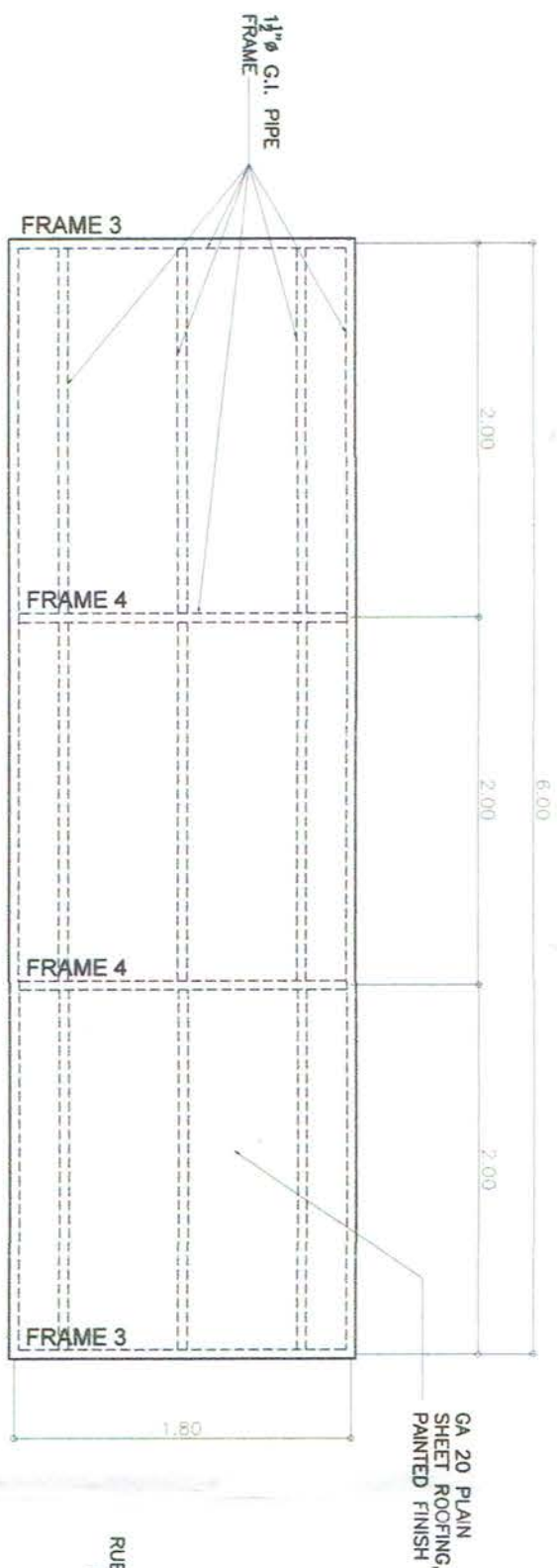
NEILSON Y. CAABAY JR.
PRINCIPAL ENGINEER A

MARLON N. SENDAYO DIEGO
ESD MANAGER

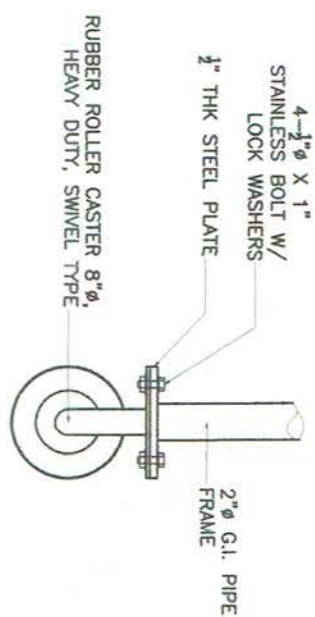
ELVIS R. MEDALLA
ACTING PORT MANAGER

TOP VIEW
FRAME 1 DETAIL
FRAME 2 DETAIL
TYPICAL SIDE VIEW
FILE NAME :

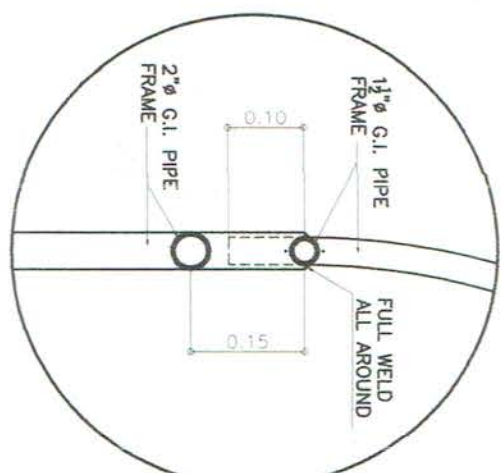
DATE : MAY 2017



COVERED WALK 2-TOP VIEW
SCALE 1:40 M
6 UNITS REQUIRED

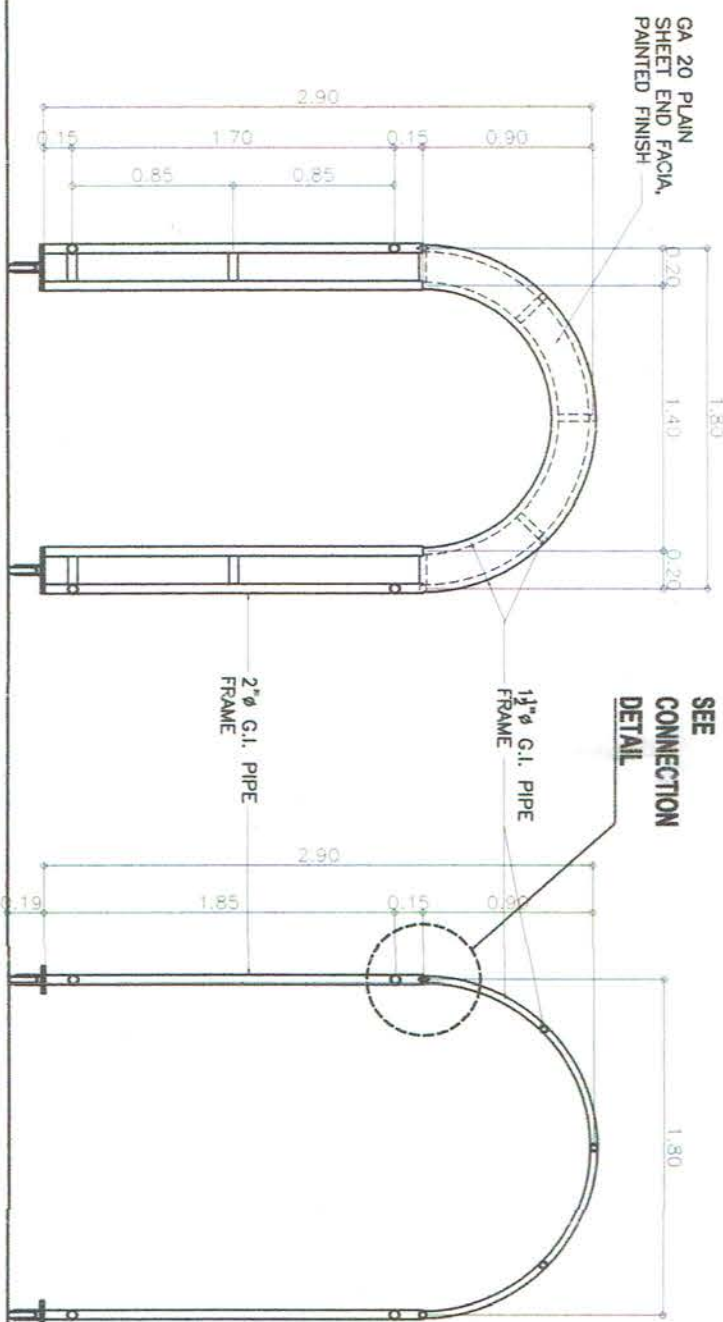


ROLLER CASTER DETAIL
SCALE 1:10 M

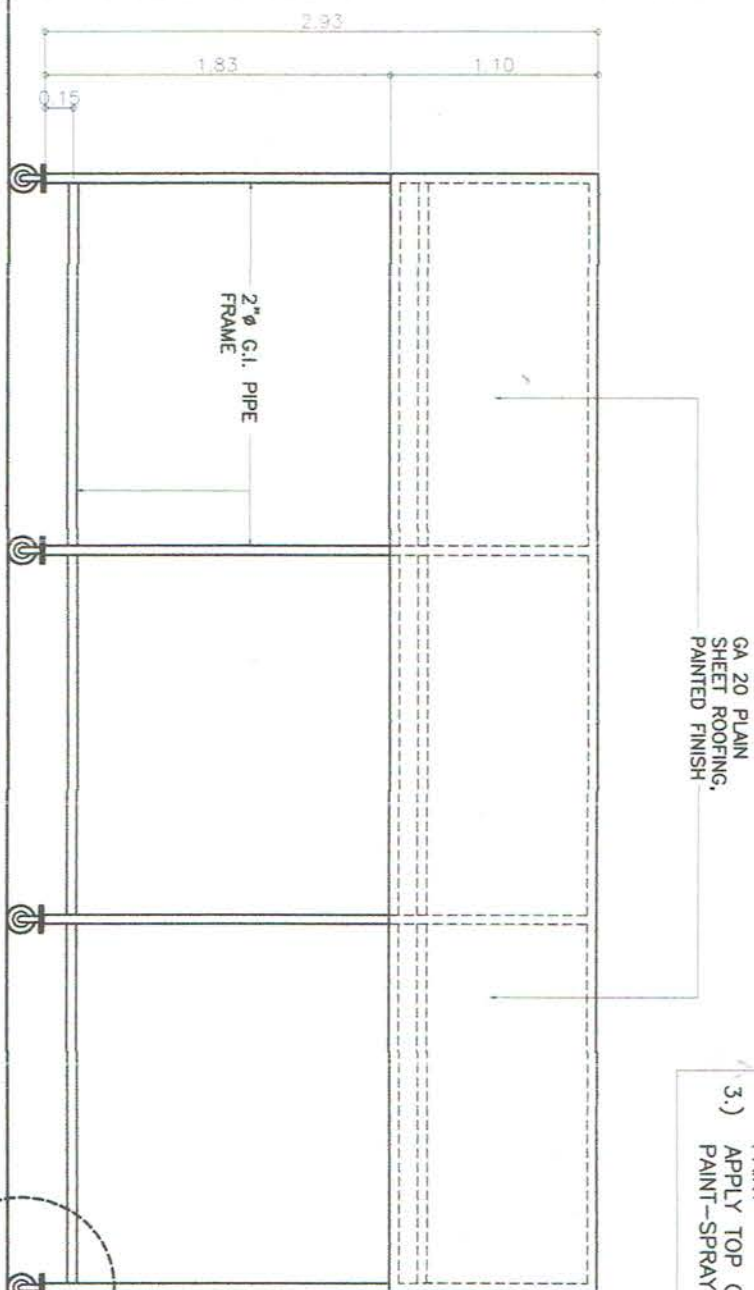


TYPICAL CONNECTION DETAIL
SCALE 1:10 M

- NOTE:**
- 1.) APPLY ETCHING SOLUTION ON G.I. PLAIN SHEETS PRIOR TO PAINTING
 - 2.) APPLY EPOXY PRIMER PAINT
 - 3.) APPLY TOP COAT, PAINT-SPRAY PAINTED



FRAME 3 DETAIL
SCALE 1:40 M



FRAME 4 DETAIL
SCALE 1:40 M

TYPICAL SIDE VIEW
SCALE 1:40 M

<p>REPUBLIC OF THE PHILIPPINES PHILIPPINE PORTS AUTHORITY PMO - PALAWAN PORT AREA PUERTO PRINCESA CITY, PALAWAN TEL NOS 434-5321434-2849434-3023434-4081434-8008</p>	<p>PROJECT TITLE AND LOCATION PROPOSED MOVABLE COVERED WALK PORT OF PUERTO PRINCESA, PALAWAN</p>	<p>DRAWN BY ALLAN P. ABONOT SUPERVISING ENGINEER</p>	<p>PREPARED BY NELSON Y. GAABAY, JR. PRINCIPAL ENGINEER A</p>	<p>RECOMMENDING APPROVAL MARLON N. SENDAYDIEGO ESD MANAGER</p>	<p>APPROVED ELVIR R. MEDALLA ACTING PORT MANAGER</p>	<p>SHEET CONTENTS TOP VIEW FRAME 4 DETAIL FRAME 5 DETAIL TYPICAL SIDE VIEW FILE NAME :</p>	<p>SHEET NO. 03 03 DATE : MAY 2017</p>
---	---	---	--	---	---	--	---