



**Various Maintenance of Port Physical Facilities, Port
of Brooke's Point, Brooke's Point, Palawan
(MPF-PLW-03-2022)**

BID DOCUMENTS
September 2022

TABLE OF CONTENTS

Glossary of Terms, Abbreviations, and Acronyms.....	3
Section I. Invitation to Bid.....	6
Section II. Instructions to Bidders.....	9
1. Scope of Bid	
2. Funding Information	
3. Bidding Requirements	
4. Corrupt, Fraudulent, Collusive, Coercive, and Obstructive Practices	
5. Eligible Bidders	
6. Origin of Associated Goods	
7. Subcontracts	
8. Pre-Bid Conference	
9. Clarification and Amendment of Bidding Documents	
10. Documents Comprising the Bid: Eligibility and Technical Components	
11. Documents Comprising the Bid: Financial Component	
12. Alternative Bids	
13. Bid Prices	
14. Bid and Payment Currencies	
15. Bid Security	
16. Sealing and Marking of Bids	
17. Deadline for Submission of Bids	
18. Opening and Preliminary Examination of Bids	
19. Detailed Evaluation and Comparison of Bids	
20. Post Qualification	
21. Signing of the Contract	
Section III. Bid Data Sheet.....	15
Section IV. General Conditions of Contract.....	18
1. Scope of Contract	
2. Sectional Completion of Works	
3. Possession of Site	
4. The Contractor's Obligations	
5. Performance Security	
6. Site Investigation Reports	
7. Warranty	
8. Liability of the Contractor	
9. Termination for Other Causes	
10. Dayworks	
11. Program of Work	
12. Instructions, Inspections and Audits	
13. Advance Payment	
14. Progress Payments	
15. Operating and Maintenance Manuals	
Section V. Special Conditions of Contract.....	22
Section VI. Specifications.....	24
Section VII. Drawings.....	32
Section VIII. Bill of Quantities.....	49
Section IX. Checklist of Technical and Financial Documents.....	64
Section X. Bidding Forms.....	67

**GLOSSARY OF
TERMS, ABBREVIATIONS, AND
ACRONYMS**

Glossary of Terms, Abbreviations, and Acronyms

ABC – Approved Budget for the Contract.

ARCC – Allowable Range of Contract Cost.

BAC – Bids and Awards Committee.

Bid – A signed offer or proposal to undertake a contract submitted by a bidder in response to and in consonance with the requirements of the bidding documents. Also referred to as Proposal and Tender. (2016 revised IRR, Section 5(c))

Bidder – Refers to a contractor, manufacturer, supplier, distributor and/or consultant who submits a bid in response to the requirements of the Bidding Documents. (2016 revised IRR, Section 5(e))

Bidding Documents – The documents issued by the Procuring Entity as the bases for bids, furnishing all information necessary for a prospective bidder to prepare a bid for the Goods, Infrastructure Projects, and/or Consulting Services required by the Procuring Entity. (2016 revised IRR, Section 5(e))

BIR – Bureau of Internal Revenue.

BSP – Bangko Sentral ng Pilipinas.

CDA – Cooperative Development Authority.

Consulting Services – Refer to services for Infrastructure Projects and other types of projects or activities of the GOP requiring adequate external technical and professional expertise that are beyond the capability and/or capacity of the GOP to undertake such as, but not limited to: (i) advisory and review services; (ii) pre investment or feasibility studies; (iii) design; (iv) construction supervision; (v) management and related services; and (vi) other technical services or special studies. (2016 revised IRR, Section 5(i))

Contract – Refers to the agreement entered into between the Procuring Entity and the Supplier or Manufacturer or Distributor or Service Provider for procurement of Goods and Services; Contractor for Procurement of Infrastructure Projects; or Consultant or Consulting Firm for Procurement of Consulting Services; as the case may be, as recorded in the Contract Form, signed by the parties, including all attachments and appendices thereto and all documents incorporated by reference thereto.

Contractor – is a natural or juridical entity whose proposal was accepted by the Procuring Entity and to whom the Contract to execute the Work was awarded. Contractor as used in these Bidding Documents may likewise refer to a supplier, distributor, manufacturer, or consultant.

CPI – Consumer Price Index.

DOLE – Department of Labor and Employment.

DTI – Department of Trade and Industry.

Foreign-funded Procurement or Foreign-Assisted Project – Refers to procurement whose funding source is from a foreign government, foreign or international financing institution as specified in the Treaty or International or Executive Agreement. (2016 revised IRR, Section 5(b))

GFI – Government Financial Institution.

GOCC – Government-owned and/or –controlled corporation.

Goods – Refer to all items, supplies, materials and general support services, except Consulting Services and Infrastructure Projects, which may be needed in the transaction of public businesses or in the pursuit of any government undertaking, project or activity, whether in the nature of equipment, furniture, stationary, materials for construction, or personal property of any kind, including non-personal or contractual services such as the repair and maintenance of equipment and furniture, as well as trucking, hauling, janitorial, security, and related or analogous services, as well as procurement of materials and supplies provided by the Procuring Entity for such services. The term “related” or “analogous services” shall include, but is not limited to, lease or purchase of office space, media advertisements, health maintenance services, and other services essential to the operation of the Procuring Entity. (2016 revised IRR, Section 5(f))

GOP – Government of the Philippines.

Infrastructure Projects – Include the construction, improvement, rehabilitation, demolition, repair, restoration or maintenance of roads and bridges, railways, airports, seaports, communication facilities, civil works components of information technology projects, irrigation, flood control and drainage, water supply, sanitation, sewerage and solid waste management systems, shore protection, energy/power and electrification facilities, national buildings, school buildings, hospital buildings, and other related construction projects of the government. Also referred to as civil works or works. (2016 revised IRR, Section 5(e))

LGUs – Local Government Units.

NFCC – Net Financial Contracting Capacity.

NGA – National Government Agency.

PCAB – Philippine Contractors Accreditation Board.

PhilGEPS – Philippine Government Electronic Procurement System.

Procurement Project – refers to a specific or identified procurement covering goods, infrastructure project or consulting services. A Procurement Project shall be described, detailed, and scheduled in the Project Procurement Management Plan prepared by the agency which shall be consolidated in the procuring entity's Annual Procurement Plan. (GPPB Circular No. 06-2019 dated 17 July 2019)

PSA – Philippine Statistics Authority.

SEC – Securities and Exchange Commission.

SLCC – Single Largest Completed Contract.

UN – United Nations.



**Invitation to Bid
for the
Various Maintenance of Port Physical Facilities, Port of Brooke's
Point, Brooke's Point, Palawan (MPF-PLW-03-2022)
(Negotiated Procurement)**

1. The **Philippine Ports Authority PMO Palawan**, through the **Corporate Budget of the Authority for CY 2022** intends to apply the sum of **Php 1,159,720.30** being the Approved Budget for the Contract (ABC) to payments under the contract for **Various Maintenance of Port Physical Facilities, Port of Brooke's Point, Brooke's Point, Palawan**. Bids received in excess of the ABC shall be automatically rejected at bid opening.
2. The **Philippine Ports Authority PMO Palawan** now invites bids for the above Procurement Project. Completion of the Works is required **Ninety (90) Calendar Days**. Bidders should have completed a contract similar to the Project. The description of an eligible bidder is contained in the Bidding Documents, particularly, in Section II (Instructions to Bidders).
3. Bidding will be conducted through open competitive bidding procedures using non-discretionary "*pass/fail*" criterion as specified in the 2016 revised Implementing Rules and Regulations (IRR) of Republic Act (RA) No. 9184.
4. Interested bidders may obtain further information from **Philippine Ports Authority PMO Palawan Bids and Awards Committee** and inspect the Bidding Documents at the address given below from **8:00 A.M. to 5:00 P.M., Monday to Friday**.
5. A complete set of Bidding Documents may be acquired by interested bidders on **September 5 - 26, 2022** from given address and website/s below *and upon payment of the applicable fee for the Bidding Documents, pursuant to the latest Guidelines issued by the GPPB, in the amount of Php 5,000.00*. The Procuring Entity shall allow the bidder to present its proof of payment for the fees *presented in person*.
6. The **Philippine Ports Authority PMO Palawan Bids and Awards Committee** will hold a Pre-Negotiation Conference on **September 12, 2022, Monday, 2:00 P.M.** at Conference Room, 2nd Floor, PPA Administrative Building, Port Area, Puerto Princesa City and/or through videoconferencing/webcasting *via Zoom*, which shall be open to prospective bidders.
7. Bids must be duly received by the BAC Secretariat through manual submission at the office address as indicated below on or before **9:00 A.M. of September 26, 2022**. Late bids shall not be accepted.
8. All bids must be accompanied by a bid security in any of the acceptable forms and in the amount stated in **ITB Clause 15**.
9. Bid opening shall be on **September 26, 2022, 9:30 A.M.** at Conference Room, 2nd Floor, PPA PMO–Palawan Administrative Building, Port Area, Puerto Princesa City. Bids will be opened in the presence of the bidders' representatives who choose to attend the activity.

10. The **Philippine Ports Authority** reserves the right to reject any and all bids, declare a failure of bidding, or not award the contract at any time prior to contract award in accordance with Sections 35.6 and 41 of the 2016 revised Implementing Rules and Regulations (IRR) of RA No. 9184, without thereby incurring any liability to the affected bidder or bidders.

- **Required PCAB Registration (Minimum): At least SMALL B- Building**

11. For further information, please refer to:

MARIZA O. NALLANA
Head Secretariat
PMO Palawan BAC
Port Area, Puerto Princesa City,
Telephone No.: (048) 433-0356 or (048) 716-6864
Email Address: pmopalawanbac@gmail.com

12. You may visit the following websites:

For downloading of Bidding Documents: www.ppa.com.ph
www.gppb.com.ph

September 5, 2022


JEMUEL B. APELLIDO
Chairperson
PPA PMO-Palawan BAC

1. Scope of Bid

The Procuring Entity, Philippine Ports Authority PMO Palawan invites Bids for the **Various Maintenance of Port Physical Facilities, Port of Brooke's Point, Brooke's Point, Palawan**, with Project Identification Number **MPF-PLW-03-2022**.

The Procurement Project (referred to herein as "Project") is for the construction of Works, as described in Section VI (Specifications).

2. Funding Information

2.1 The Philippine Ports Authority through the source of funding as indicated below for CY 2022 in the amount of **Php 1,159,720.30**.

2.2 The source of funding is:

- a. **Corporate Operating Budget.**

3. Bidding Requirements

The Bidding for the Project shall be governed by all the provisions of RA No. 9184 and its 2016 revised IRR, including its Generic Procurement Manual and associated policies, rules and regulations as the primary source thereof, while the herein clauses shall serve as the secondary source thereof.

Any amendments made to the IRR and other GPPB issuances shall be applicable only to the ongoing posting, advertisement, or invitation to bid by the BAC through the issuance of a supplemental or bid bulletin.

The Bidder, by the act of submitting its Bid, shall be deemed to have inspected the site, determined the general characteristics of the contracted Works and the conditions for this Project, such as: (a) the location and the nature of the work; (b) climatic conditions; (c) transportation facilities; (d) nature and condition of the terrain, geological conditions at the site communication facilities, requirements, location and availability of construction aggregates and other materials, labor, water, electric power and access roads; and (e) other factors that may affect the cost, duration and execution or implementation of the contract, project, or work and examine all instructions, forms, terms, and project requirements in the Bidding Documents.

4. Corrupt, Fraudulent, Collusive, Coercive, and Obstructive Practices

The Procuring Entity, as well as the Bidders and Contractors, shall observe the highest standard of ethics during the procurement and execution of the contract. They or through an agent shall not engage in corrupt, fraudulent, collusive, coercive, and obstructive practices defined under Annex "I" of the 2016 revised IRR of RA No. 9184 or other integrity violations in competing for the Project.

5. Eligible Bidders

5.1. Only Bids of Bidders found to be legally, technically, and financially capable will be evaluated.

5.2. The Bidder must have an experience of having completed a Single Largest Completed Contract (SLOC) that is similar to this Project, equivalent to at least fifty percent (50%) of the ABC adjusted, if necessary, by the Bidder to current prices using the PSA's CPI, except under conditions provided for in Section 23.4.2.4 of the 2016 revised IRR of RA No. 9184.

A contract is considered to be "similar" to the contract to be bid if it has the major categories of work stated in the BDS.

5.3. For Foreign-funded Procurement, the Procuring Entity and the foreign government/foreign or international financing institution may agree on another track record requirement, as specified in the Bidding Document prepared for this purpose.

5.4. The Bidders shall comply with the eligibility criteria under Section

5.5. 23.4.2 of the 2016 IRR of RA No. 9154.

6. Origin of Associated Goods

There is no restriction on the origin of Goods other than those prohibited by a decision of the UN Security Council taken under Chapter VII of the Charter of the UN.

7. Subcontracts

7.1. The Bidder may subcontract portions of the Project to the extent allowed by the Procuring Entity as stated herein, but in no case more than fifty percent (50%) of the Project.

The Procuring Entity has prescribed that:

- a. Subcontracting is not allowed.

7.2. Subcontracting of any portion of the Project does not relieve the Contractor of any liability or obligation under the Contract. The Supplier will be responsible for the acts, defaults, and negligence of any subcontractor, its agents, servants, or workmen as fully as if these were the Contractor's own acts, defaults, or negligence, or those of its agents, servants, or workmen.

8. Pre-Bid Conference

The Procuring Entity will hold a pre-bid conference for this Project on the specified date and time and either at its physical address Philippine Ports Authority PMO Palawan, Port Area, Puerto Princessa City, Palawan and/or through videoconferencing/webcasting as indicated in paragraph 6 of the IB.

9. Clarification and Amendment of Bidding Documents

Prospective bidders may request for clarification on and/or interpretation of any part of the Bidding Documents. Such requests must be in writing and received by the Procuring Entity, either at its given address or through electronic mail indicated in the IB, at least ten (10) calendar days before the deadline set for the submission and receipt of Bids.

10. Documents Comprising the Bid: Eligibility and Technical Components

10.1. The first envelope shall contain the eligibility and technical documents of the Bid as specified in Section IX, Checklist of Technical and Financial Documents.

10.2. If the eligibility requirements or statements, the bids, and all other documents for submission to the BAC are in foreign language other than English, it must be accompanied by a translation in English, which shall be authenticated by the appropriate Philippine foreign service establishment, post, or the equivalent office having jurisdiction over the foreign bidder's affairs in the Philippines. For Contracting Parties to the Apostille Convention, only the translated documents shall be authenticated through an apostille pursuant to

GPPB Resolution No. 13-2019 dated 23 May 2019. The English translation shall govern, for purposes of interpretation of the bid.

- 10.3. A valid PCAB License is required, and in case of joint ventures, a valid special PCAB License, and registration for the type and cost of the contract for this Project. Any additional type of Contractor license or permit shall be indicated in the BDS.
- 10.4. A List of Contractor's key personnel (e.g., Project Manager, Project Engineers, Materials Engineers, and Foremen) assigned to the contract to be bid, with their complete qualification and experience data shall be provided. These key personnel must meet the required minimum years of experience set in the BDS.
- 10.5. A List of Contractor's major equipment units, which are owned, leased, and/or under purchase agreements, supported by proof of ownership, certification of availability of equipment from the equipment lessor/vendor for the duration of the project, as the case may be, must meet the minimum requirements for the contract set in the BDS.

11. Documents Comprising the Bid: Financial Component

- 11.1. The second bid envelope shall contain the financial documents for the Bid as specified in Section IX, Checklist of Technical and Financial Documents.
- 11.2. Any bid exceeding the ABC indicated in paragraph 1 of the IB shall not be accepted.
- 11.3. For Foreign-funded procurement, a ceiling may be applied to bid prices provided the conditions are met under Section 31.2 of the 2016 revised IRR of RA No. 9184.

12. Alternative Bids

Bidders shall submit offers that comply with the requirements of the Bidding Documents, including the basic technical design as indicated in the drawings and specifications. Unless there is a value engineering clause in the BDS, alternative Bids shall not be accepted.

13. Bid Prices

All bid prices for the given scope of work in the Project as awarded shall be considered as fixed prices, and therefore not subject to price escalation during contract implementation, except under extraordinary circumstances as determined by the NEQA and approved by the GPPB pursuant to the revised Guidelines for Contract Price Escalation guidelines.

14. Bid and Payment Currencies

- 14.1. Bid prices may be quoted in the local currency or tradeable currency accepted by the BGP at the discretion of the Bidder. However, for purposes of bid evaluation, Bids denominated in foreign currencies shall be converted to Philippine currency based on the exchange rate as published in the BGP reference rate bulletin on the day of the bid opening.
- 14.2. Payment of the contract price shall be made in:

- a. Philippine Pesos

15. Bid Security

- 15.1. The Bidder shall submit a Bid Securing Declaration or any form of Bid Security in the amount indicated in the BDS, which shall be not less than the percentage of the ABC in accordance with the schedule in the BDS.
- 15.2. The Bid and bid security shall be valid until One Hundred Twenty (120) days from the date set for Bid Opening. Any bid not accompanied by an acceptable bid security shall be rejected by the Procuring Entity as non-responsive.

16. Sealing and Marking of Bids

Each Bidder shall submit one copy of the first and second components of its Bid.

The Procuring Entity may request additional hard copies and/or electronic copies of the Bid. However, failure of the Bidders to comply with the said request shall not be a ground for disqualification.

If the Procuring Entity allows the submission of bids through online submission to the given website or any other electronic means, the Bidder shall submit an electronic copy of its Bid, which must be digitally signed. An electronic copy that cannot be opened or is corrupted shall be considered non-responsive and, thus, automatically disqualified.

17. Deadline for Submission of Bids

The Bidders shall submit on the specified date and time and either at its physical address or through online submission as indicated in paragraph 7 of the IB.

18. Opening and Preliminary Examination of Bids

- 18.1. The BAC shall open the Bids in public at the time, on the date, and at the place specified in paragraph 9 of the IB. The Bidders' representatives who are present shall sign a register evidencing their attendance. In case videoconferencing, webcasting or other similar technologies will be used, attendance of participants shall likewise be recorded by the BAC Secretariat.

In case the Bids cannot be opened as scheduled due to justifiable reasons, the rescheduling requirements under Section 29 of the 2016 revised IRR of RA No. 9184 shall prevail.

- 18.2. The preliminary examination of Bids shall be governed by Section 30 of the 2016 revised IRR of RA No. 9184.

19. Detailed Evaluation and Comparison of Bids

- 19.1. The Procuring Entity's BAC shall immediately conduct a detailed evaluation of all Bids rated "passed" using non-discretionary pass/fail criteria. The BAC shall consider the conditions in the evaluation of Bids under Section 32.2 of 2016 revised IRR of RA No. 9184.
- 19.2. If the Project allows partial bids, all Bids and combinations of Bids as indicated in the BDS shall be received by the same deadline and opened and evaluated simultaneously so as to determine the Bid or combination of Bids offering the lowest calculated cost to the Procuring Entity. Bid Security as required by ITB Clause 16 shall be submitted for each contract (lot) separately.
- 19.3. In all cases, the NFCC computation pursuant to Section 23.4.2.6 of the 2016 revised IRR of RA No. 9184 must be sufficient for the total of the ABCs for all the lots participated in by the prospective Bidder.

20. Post Qualification

Within a non-extendible period of five (5) calendar days from receipt by the Bidder of the notice from the SAC that it submitted the Lowest Calculated Bid, the Bidder shall submit its latest income and business tax returns filed and paid through the IIR Electronic Filing and Payment System (eFPS), and other appropriate licenses and permits required by law and stated in the BDS.

25. Signing of the Contract

The documents required in Section 37.2 of the 2016 revised IRR of RA No. 9154 shall form part of the Contract. Additional Contract documents are indicated in the BDS.

Bid Data Sheet

ITB Clause																																					
5.2	<p>For this purpose, contracts similar to the Project refer to contracts which have the same major categories of work, which shall be:</p> <table><tr><th>Major Operation of Work</th><th>Unit of Measure</th><th>Required Quantity</th></tr><tr><td>1. Carpentry Works</td><td>sqm</td><td>25.40</td></tr><tr><td>2. Painting Works</td><td>sqm</td><td>1,107.40</td></tr><tr><td>3. Concrete Works</td><td>cum</td><td>6.33</td></tr><tr><td>4. Demolition Works</td><td>cum</td><td>10.34</td></tr><tr><td>5. Base Preparation</td><td>sqm</td><td>26.23</td></tr><tr><td>6. Portlight</td><td>units</td><td>3.00</td></tr></table>	Major Operation of Work	Unit of Measure	Required Quantity	1. Carpentry Works	sqm	25.40	2. Painting Works	sqm	1,107.40	3. Concrete Works	cum	6.33	4. Demolition Works	cum	10.34	5. Base Preparation	sqm	26.23	6. Portlight	units	3.00															
Major Operation of Work	Unit of Measure	Required Quantity																																			
1. Carpentry Works	sqm	25.40																																			
2. Painting Works	sqm	1,107.40																																			
3. Concrete Works	cum	6.33																																			
4. Demolition Works	cum	10.34																																			
5. Base Preparation	sqm	26.23																																			
6. Portlight	units	3.00																																			
7.1	Subcontracting is not allowed																																				
10.3	For Joint Venture : Special PCAB License																																				
10.4	<p>The key personnel must meet the required minimum years of experience set below:</p> <table><tr><th>Key Personnel</th><th>General Experience</th><th>Relevant Experience</th></tr><tr><td>1) Project Manager</td><td>Infrastructure/Civil Works</td><td>Building Construction</td></tr><tr><td>2) Project Engineer</td><td>Infrastructure/Civil Works</td><td>Building Construction</td></tr><tr><td>3) Materials Engineer</td><td>Infrastructure/Civil Works</td><td>Building Construction</td></tr><tr><td>4) Safety and Health Officer</td><td>Infrastructure/Civil Works</td><td>Building Construction</td></tr><tr><td>5) Foreman</td><td>Infrastructure/Civil Works</td><td>Building Construction</td></tr></table> <p>NOTE: Required Personnel minimum years of experience, at least two (2) years of experience</p>	Key Personnel	General Experience	Relevant Experience	1) Project Manager	Infrastructure/Civil Works	Building Construction	2) Project Engineer	Infrastructure/Civil Works	Building Construction	3) Materials Engineer	Infrastructure/Civil Works	Building Construction	4) Safety and Health Officer	Infrastructure/Civil Works	Building Construction	5) Foreman	Infrastructure/Civil Works	Building Construction																		
Key Personnel	General Experience	Relevant Experience																																			
1) Project Manager	Infrastructure/Civil Works	Building Construction																																			
2) Project Engineer	Infrastructure/Civil Works	Building Construction																																			
3) Materials Engineer	Infrastructure/Civil Works	Building Construction																																			
4) Safety and Health Officer	Infrastructure/Civil Works	Building Construction																																			
5) Foreman	Infrastructure/Civil Works	Building Construction																																			
10.5	<p>The minimum major equipment requirements are the following:</p> <table><tr><th>Equipment</th><th>Capacity</th><th>No.</th><th>Ownership</th></tr><tr><td>Concrete Cutter</td><td>14"dia. Blade, 150HP</td><td>1</td><td>Owned / Leased</td></tr><tr><td>Concrete Mixer, 1 Bagger</td><td>1 Bagger, 120HP</td><td>1</td><td>Owned / Leased</td></tr><tr><td>Concrete Vibrator, 3.5HP</td><td>35mmØ Vib Head, 3.5HP</td><td>1</td><td>Owned / Leased</td></tr><tr><td>Cut Off Machine</td><td>14" blade</td><td>1</td><td>Owned / Leased</td></tr><tr><td>Air compressor with Jack Hammer</td><td>250 CFM</td><td>1</td><td>Owned / Leased</td></tr><tr><td>Welding Genset (Diesel-driven)</td><td>400A</td><td>1</td><td>Owned / Leased</td></tr><tr><td>Cargo Truck</td><td>3T cap</td><td>1</td><td>Owned / Leased</td></tr><tr><td>Spray Brush with Air Compressor</td><td>20HP</td><td>1</td><td>Owned / Leased</td></tr></table>	Equipment	Capacity	No.	Ownership	Concrete Cutter	14"dia. Blade, 150HP	1	Owned / Leased	Concrete Mixer, 1 Bagger	1 Bagger, 120HP	1	Owned / Leased	Concrete Vibrator, 3.5HP	35mmØ Vib Head, 3.5HP	1	Owned / Leased	Cut Off Machine	14" blade	1	Owned / Leased	Air compressor with Jack Hammer	250 CFM	1	Owned / Leased	Welding Genset (Diesel-driven)	400A	1	Owned / Leased	Cargo Truck	3T cap	1	Owned / Leased	Spray Brush with Air Compressor	20HP	1	Owned / Leased
Equipment	Capacity	No.	Ownership																																		
Concrete Cutter	14"dia. Blade, 150HP	1	Owned / Leased																																		
Concrete Mixer, 1 Bagger	1 Bagger, 120HP	1	Owned / Leased																																		
Concrete Vibrator, 3.5HP	35mmØ Vib Head, 3.5HP	1	Owned / Leased																																		
Cut Off Machine	14" blade	1	Owned / Leased																																		
Air compressor with Jack Hammer	250 CFM	1	Owned / Leased																																		
Welding Genset (Diesel-driven)	400A	1	Owned / Leased																																		
Cargo Truck	3T cap	1	Owned / Leased																																		
Spray Brush with Air Compressor	20HP	1	Owned / Leased																																		
12	Value Engineering Clause: Not Allowed																																				
15.1	<p>The bid security shall be in the form of a Bid Securing Declaration OR any of the following forms and amounts:</p> <ul style="list-style-type: none">a. The amount of not less than Php 23,194.41, if bid security is in cash, cashier's/manager's check, bank draft/guarantee or irrevocable letter of credit;b. The amount of not less than Php 67,866.02 if bid security is in Surety Bond.																																				
16	Each Bidder shall submit One (1) original and Four (4) copies of their Technical and Financial Bid, properly book-bound with hard/soft cover. Screw-bound, ring-bound and combo-bound documents are not acceptable.																																				
19.2	Partial bid is not allowed																																				
20	Other appropriate licenses and permits required: None																																				

21	Additional contract documents relevant to the Project that may be required by existing laws and/or the Procuring Entity, such as construction schedule and S-curve, manpower schedule, construction methods, equipment utilization schedule, construction safety and health program approved by the DOLE, and other acceptable tools of project scheduling.
----	---

Section IV. General Conditions of Contract

1. Scope of Contract

This Contract shall include all such items, although not specifically mentioned, that can be reasonably inferred as being required for its completion as if such items were expressly mentioned herein. All the provisions of RA No. 9184 and its 2016 revised IRR, including the Generic Procurement Manual, and associated issuances, constitute the primary source for the terms and conditions of the Contract, and thus, applicable in contract implementation. Herein clauses shall serve as the secondary source for the terms and conditions of the Contract.

This is without prejudice to Sections 74.1 and 74.2 of the 2016 revised IRR of RA No. 9184 allowing the GPPS to amend the IRR, which shall be applied to all procurement activities, the advertisement, posting, or invitation of which were issued after the effectivity of the said amendment.

2. Sectional Completion of Works

If sectional completion is specified in the Special Conditions of Contract (SCC), references in the Conditions of Contract to the Works, the Completion Date, and the Intended Completion Date shall apply to any Section of the Works (other than references to the Completion Date and Intended Completion Date for the whole of the Works).

3. Possession of Site

3.1 The Procuring Entity shall give possession of all or parts of the Site to the Contractor based on the schedule of delivery indicated in the SCC, which corresponds to the execution of the Works. If the Contractor suffers delay or incurs cost from failure on the part of the Procuring Entity to give possession in accordance with the terms of this clause, the Procuring Entity's Representative shall give the Contractor a Contract Time Extension and certify such sum as fair to cover the cost incurred, which sum shall be paid by Procuring Entity.

3.2 If possession of a portion is not given by the above date, the Procuring Entity will be deemed to have delayed the start of the relevant activities. The resulting adjustments in contract time to address such delay may be addressed through contract extension provided under Annex "E" of the 2016 revised IRR of RA No. 9184.

4. The Contractor's Obligations

The Contractor shall employ the key personnel named in the Schedule of Key Personnel indicating their designation, in accordance with ITB Clause 10.3 and specified in the BDS, to carry out the supervision of the Works.

The Procuring Entity will approve any proposed replacement of key personnel only if their relevant qualifications and abilities are equal to or better than those of the personnel listed in the Schedule.

5. Performance Security

5.1 Within ten (10) calendar days from receipt of the Notice of Award from the Procuring Entity but in no case later than the signing of the contract by both parties, the successful Bidder shall furnish the performance security in any of the forms prescribed in Section 39 of the 2016 revised IRR.

5.2 The Contractor, by entering into the Contract with the Procuring Entity, acknowledges the right of the Procuring Entity to institute action pursuant to RA No. 3689 against any subcontractor be they an individual, firm, partnership, corporation, or association supplying the Contractor with labor, materials and/or equipment for the performance of this Contract.

6. Site Investigation Reports

The Contractor, in preparing the Bid, shall rely on any Site Investigation Reports referred to in the SCC supplemented by any information obtained by the Contractor.

7. Warranty

7.1. In case the Contractor fails to undertake the repair works under Section 82.2.2 of the 2018 revised IRR, the Procuring Entity shall forfeit its performance security, subject its property(ies) to attachment or garnishment proceedings, and perpetually disqualify it from participating in any public bidding. All payables of the GOP in his favor shall be offset to recover the costs.

7.2. The warranty against Structural Defects/Failures, except that occasioned on force majeure, shall cover the period from the date of issuance of the Certificate of Final Acceptance by the Procuring Entity. Specific duration of the warranty is found in the SCC.

8. Liability of the Contractor

Subject to additional provisions, if any, set forth in the SCC, the Contractor's liability under this Contract shall be as provided by the laws of the Republic of the Philippines.

If the Contractor is a joint venture, all partners to the joint venture shall be jointly and severally liable to the Procuring Entity.

9. Termination for Other Causes

Contract termination shall be initiated in case it is determined *prima facie* by the Procuring Entity that the Contractor has engaged, before, or during the implementation of the contract, in unlawful deeds and behaviors relative to contract acquisition and implementation, such as, but not limited to corrupt, fraudulent, collusive, coercive, and obstructive practices as stated in ITB Clause 4.

10. Dayworks

Subject to the guidelines on Variation Order in Annex "E" of the 2018 revised IRR of RA No. 9184, and if applicable as indicated in the SCC, the Dayworks rates in the Contractor's Bid shall be used for small additional amounts of work only when the Procuring Entity's Representative has given written instructions in advance for additional work to be paid for in that way.

11. Program of Work

11.1. The Contractor shall submit to the Procuring Entity's Representative for approval the said Program of Work showing the general methods, arrangements, order, and timing for all the activities in the Works. The submissions of the Program of Work are indicated in the SCC.

11.2. The Contractor shall submit to the Procuring Entity's Representative for approval an updated Program of Work at intervals no longer than the period stated in the SCC. If the Contractor does not submit an updated Program of Work within this period, the Procuring Entity's Representative may withhold the amount stated in the SCC from the next payment certificate and continue to withhold this amount until the next payment after the date on which the overdue Program of Work has been submitted.

12. Instructions, Inspections and Audits

The Contractor shall permit the GOP or the Procuring Entity to inspect the Contractor's accounts and records relating to the performance of the Contractor and to have them audited by auditors of the GOP or the Procuring Entity, as may be required.

13. Advance Payment

The Procuring Entity shall, upon a written request of the Contractor which shall be submitted as a Contract document, make an advance payment to the Contractor in an amount not exceeding fifteen percent (15%) of the total contract price, to be made in lump sum, or at the most two installments according to a schedule specified in the SCC, subject to the requirements in Annex 'E' of the 2016 revised IRR of RA No. 9154.

14. Progress Payments

The Contractor may submit a request for payment for Work accomplished. Such requests for payment shall be verified and certified by the Procuring Entity's Representative/Project Engineer. Except as otherwise stipulated in the SCC, materials and equipment delivered on the site but not completely put in place shall not be included for payment.

15. Operating and Maintenance Manuals

- 15.1. If required, the Contractor will provide "as built" Drawings and/or operating and maintenance manuals as specified in the SCC.
- 15.2. If the Contractor does not provide the Drawings and/or manuals by the dates stated above, or they do not receive the Procuring Entity's Representative's approval, the Procuring Entity's Representative may withhold the amount stated in the SCC from payments due to the Contractor.

Section V. Special Conditions of Contract

Special Conditions of Contract

GCC Clause	
2	Sectional completion: None
4.1	<i>[Specify the schedule of delivery of the possession of the site to the Contractor, whether full or in part.]</i>
6	The site investigation reports are: None
5.1	Performance bond from PPA-Accredited surety and insurance company
7.2	Semi-permanent structures: Five (5) years Buildings of types 1, 2, and 3 as classified under the National Building Code of the Philippines, concrete/asphalt roads, concrete river control, drainage, irrigation lined canals, river landing, deep wells, rock causeway, pedestrian overpass, and other similar semi-permanent structures
10	No dayworks are applicable to the contract.
11.1	The Contractor shall submit the Program of Work to the Procuring Entity's Representative within 15 days of delivery of the Notice of Award.
11.2	The amount to be withheld for late submission of an updated Program of Work is _____.
13	No advance payments or mobilization fees shall, as a rule, be extended or paid to the winning bidder per DOTr memorandum dated July 10, 2018.
14	No further instruction
15.1	The date by which operating and maintenance manuals are required is _____ The date by which "as built" drawings are required upon submission of Final Bidding
15.2	The amount to be withheld for failing to produce "as built" drawings and/or operating and maintenance manuals by the date required is _____.

Name of Project: **MPF-PLW-03-2022: Various Maintenance of Port Physical Facilities, Port of Brooke's Point, Palawan**
Location: **Port of Brooke's Point, Brooke's Point, Palawan**

TECHNICAL SPECIFICATIONS

SCOPE OF WORK

The work consists of furnishing labor, materials and tools/equipment and other items necessary for the completion of "VARIOUS MAINTENANCE OF PORT PHYSICAL FACILITIES, PORT OF BROOKES POINT, PALAWAN." All materials and services not expressly called for in the specifications and not shown in the drawings which may be necessary for the completion of the repair, shall be performed, furnished and installed.

The plans, detailed drawings and these Specifications shall be considered as complementing each other, so that what mentioned or shown in one, although not mentioned or shown in the other, shall be considered as appearing on both. In case of conflict between the two, the same should be referred to the PPA Project Manager/Engineer for resolution.

All materials and works shall conform to the provisions of the latest edition of American Standards for Testing and Materials (ASTM), Philippine National Standards (PNS), National Building Code of the Philippines and other applicable standards both local and international.

JOB CONDITIONS

The contractor shall clear the site of all obstruction. Demolition, removal and chipping-off the parts of the structures shall be executed properly. Salvaged materials shall turn-over and or stored as directed by the Authority. Barricade and signboards shall be provided and installed as safety measures and for information of the port users for its convenience. Workers shall wear personal protective equipments (PPE's) at all times for safety of life purposes. In the event of damage of adjacent room and or port facilities, immediately make all necessary repairs and replacement to the approval of and at no cost to PPA.

CONSTRUCTION PHOTOGRAPHS

Provide record progress photographs taken at a fixed point and angle as, when and where directed by the Engineer at intervals of not more than ten (10) days. The photographs shall be sufficient in number and location to record the exact progress of works. Billing photographs shall be in 4R size with corresponding billboard indicating the name of the project and location, bill number, item number, name of the person taking the photograph, date taken and the on-going activity.

RECORDS OF DAILY ACTIVITIES / EVENTS

The Contractor shall maintain a daily log describing the important events pertaining to the Works, the working hours, the number of laborers employed, effective operation time of equipment, overtime hours, delays due to meteorological and maritime conditions, weather condition, lack of labor, materials or equipment, progress made including instructions, notifications, issues and concerns and recommendations made by the Engineer.

SAFETY

The Contractor shall be responsible for the safety of its workers. Wearing of personal protective equipments (PPEs) shall be mandatory.

At the end of each day's work, the site shall be left in safe condition, so that no part is in danger of toppling, or falling or creating hazards to personnel or equipment. The construction site shall be properly lighted at night. Warning signs shall be properly located for the safety of the port users.

Safety guidelines as stipulated in PPA Engineering Circular 01-2020 pertaining to the implementation of PPA projects during the COVID-19 public health emergency must be observed and implemented. The contractor shall provide and use thermal scanners and footbaths as part of the safety measures. Records of daily temperature readings must be maintained.

DISMANTLING, DEMOLITION AND EXCAVATION WORKS

All dismantling/removal and chipping-off/demolition or excavation activities involved in the projects shall be properly coordinated with the Project Engineer to avoid damage to other port facilities. The demolition and dismantling work shall be carried out by approved methods and equipment. The contractor shall provide suitable equipment, skilled labor, and appropriate temporary works such as scaffoldings to ensure safety in his demolition and dismantling works as well as in the adjacent area. Dismantled materials should be removed from site at the end of every working day and must be stored in a designated area.

CONCRETE MATERIALS AND WORKS

Cement shall be Portland cement (Type 1).

Coarse aggregates retained on the 4.75mm (No. 4) sieve shall be crushed stone/rock, crushed slag and unless otherwise stipulated shall conform to the requirements of AASHTO M 78. It shall conform to the applicable requirements of section 703.5.1 coarse aggregates of item 703.

Fine aggregates passing the 4.75mm (no.4) sieve shall consist of natural sand, stone, stone screenings or slag screenings or a combination thereof and unless stipulated shall conform to the quality requirements of AASHTO M 28 (ASTM D 1073). It shall conform to the applicable requirements of section 703.5.2. fine aggregates of item 703.

Water for mixing and curing concrete shall be clean, fresh and free from injurious amount of oil, acid, salt, organic matter and other deleterious substances.

Calcium chloride shall not be included in any concrete. Concrete shall be placed and fully compacted so as to avoid cold joints, honeycombing and to minimize segregation, excessive blemishes or other defects in the hardened concrete. Compaction shall be carried out without causing damage or displacement of the formwork, reinforcement, etc.

Concrete strength shall be 3,500 psi or 24 Mpa, and concrete shall be thoroughly mixed to a uniform consistency. Concrete shall be deposited as nearly as practicable in its final position to avoid segregation due to re handling or flowing. Concrete slump should not be more than 6". Concrete shall be maintained in a moist condition for at least 7 days after placing.

CONCRETE HOLLOW BLOCKS

Concrete hollow blocks shall have a minimum compressive strength of 5.50Mpa. Refer to the approved plan for the diameter and spacing of vertical and horizontal reinforcement. Lap splices shall be at least 300 mm long. Mortar for block laying must have a must be 1 part cement to 3 parts sand while for plastering, 1 part cement to 2 parts sand.

DEFORMED BAR REINFORCEMENTS

Deformed bar reinforcements shall conform to PNS 49 or ASTM 615, or approved quality to be used for the subject. Bars shall be free from any flaking rust, mill scale, grease or coatings of any type that would tend to reduce or destroy the bond.

WELDING WORKS

Fabrication and installation of steel materials to be used in the repair of steel gates, fence, steel grating, steel support and ladders shall be in accordance with the approved plans (refer to approved plan). Installed steel members shall be welded for sturdy connections. Fluxes on welded parts shall be properly removed by sanding. Alignment shall be properly checked.

Protect and cover adjacent finishes such as tiles, glass and other materials to avoid being damaged by welding hot slags and sparks.

PAINTING WORKS (except otherwise specified in the individual items)

For steel repainting The surface to be painted should be free from dirt, rust, oil or any substance that may reduce adhesion of paint. It should be pre-treated with rust converter, washed clean and dried, applied with two (2) coatings of epoxy primer. First coating of epoxy primer must be applied immediately after the surface is dried to avoid initial formation of rust. For members that require top coats, apply two (2) coats of quick drying enamel/aluminum silver paint after the primer had considerably dried.

For repainting of existing metal sheet roofing/parapet

For painting, roofing, ridge roll, gutter and flashings should be clean and dried, applied with two (2) coats of roof paint. Unpainted edge left by cutting should be repainted by roofing paint to prevent corrosion.

For repainting of existing concrete surface:

The surface to be painted should be clean and dry, flaking and peeling paints should be scrapped. Chalking paint should be treated with chalk blocking solution. Apply 2 coatings of semi-gloss latex.

For painting of newly plastered surface: The surface should be applied with skim coat and smoothed by sanding. Apply one (1) coating of flat latex and two (2) coatings of semi-gloss latex.

Brand and color of the paints to be used shall be at the choice of PPA.

TILE WORKS

Surface to be tiled must be properly roughened to increase adhesion. Tiles must be soaked in water before installation. Use tile adhesive as bonding material.

I. MAINTENANCE OF TMO BUILDING

1.01 Maintenance of Glass Door

Refer to detailed drawing for the replacement of 1-3/4" x 4" aluminum (bronze) tubular, 6mm thk. bronze glass, 1 unit door closer and snap on base with cover. Screws, nut, washers, bolts, rivets and other miscellaneous fastening devices shall be made of non-corrosive materials such as aluminum, stainless steel, etc. Aluminum framed door must be sealed by applying clear silicone sealant (industrial grade) to both outside and inside edges. At completion of work, leave glass and glazing works free from cracks and rattles and clean on both sides.

1.02 Maintenance of Office Lights

Installation of additional 4 pcs – recessed type downlight casing with 4 pcs – 5W LED bulb (daylight) and tap to existing lighting circuit. Check and repair electrical wirings if necessary.

II. MAINTENANCE OF PASSENGER TERMINAL BUILDING

2.01 Repainting of Eave Ceiling, Parapet and Steel Casement Windows and Repair of Roofing

For repainting of Eave Ceiling and Steel Casement Windows: The surface to be painted should be free from dirt, rust, oil or any substance that may reduce adhesion of paint. It should be washed clean and dried, applied with one (1) coat of epoxy primer and two (2) coats of quick drying enamel (semi-gloss) after the primer had considerably dried.

For repainting of Parapet: The surface to be painted should be free from dirt, rust, oil or any substance that may reduce adhesion of paint. It should be washed clean and dried, applied with two (2) coats of quick drying enamel (semi-gloss).

Repair of Roofing:

Rivet and seal roofing at Canopy as shown in the drawing.

2.02 Maintenance of Eave Lamps

Replacement of all 14 pcs – 8" Ø recessed type downlight casing (same specs as existing) with 5W LED bulb (daylight). Check and repair electrical wirings if necessary.

2.03 Maintenance of Comfort Rooms and Pressure Tank

Replacement of 9 pcs - 1/2" Ø angle valve (1 way), 3 pcs -1/2" Ø flexible hose and 6 sets – heavy duty bidet spray hose at Comfort Rooms. Valves and fittings shall be high grade galvanized, stainless or similar. For pressure tank piping improvement, provide swing type check valve at supply valve. Also provide gate valve next to pressure meter as blow off. Contractor shall be responsible for testing the system against leaks and clogs.

2.04 Maintenance of Glass Doors

Replacement of 2 sets – lockset for aluminum framed door (Analog) and 2 sets – flush bolt for aluminum framed door (Analog).

III. MAINTENANCE OF CIQS BUILDING

3.01 Maintenance of Fixtures at CR's and Kitchen

Replacement of 2 sets – bottle trap of double sink at Kitchen. Replacement of 5 pcs - 1/2" Ø angle valve (1 way), 1 pc - 1/2" Ø angle valve (2 way) and 6 pcs -1/2" Ø flexible hose at Comfort Rooms. Valves and fittings shall be high grade galvanized, stainless or similar. Contractor shall be responsible for testing the system against leaks and clogs.

3.02 Maintenance of Electrical System

Electrical works:

Replacement of 12 pcs – 18W LED tube (daylight). Repair/replace 9 sets – duplex convenience outlet (with plate & cover) and use 1/2" Ø PVC conduit with 3.50mm² THHN wire for rewiring. Check and repair electrical wirings if necessary.

Restoration & repainting works:

Affected walls subject for plastering, restoration and painting. Entire panel affected by repair should be repainted to avoid color difference. Refer to painting specification.

IV. MAINTENANCE OF WELCOME ARCH, GATES AND FENCES

4.01 Maintenance of Main Entrance Steel Gate (Repair and Repainting)

Repair works:

Refer to detailed drawing for the replacement of 12mm Ø tension rods and turnbuckles (300mm body length) and repair of barrel and drop bolts. Refer to welding works specification. Restore and repaint chipped column after the installation of 16mm Ø rod anchor.

Repainting works:

For flaking and peeling paints, remove existing paint by sanding/steel brush/cup brush and apply paint remover. Refer to painting specification.

4.02 Maintenance of Welcome Arch (Electrical System)

Replace 2 sets – globe light with cage including 10W LED bulbs (daylight) and 2 units - 30W LED flood light. Check and repair electrical wirings if necessary.

4.03 Maintenance of Concrete Fence (Repainting, Replacement of Barbed Wire)

Replace and paint barbed wire at Pier Approach. Re-paint all existing and new barbed wire and pipe supports at Front Fence and Pier Approach. Repainting of CHB fence (35.3m length & 2.25m height) at front side fence (exterior face). Refer to painting specification.

V. MAINTENANCE OF R.C. PIER

5.01 Maintenance of R.C. Curbs

Damaged curb must be chipped off. Rusted reinforcement should be removed but leave enough length for welding of the new reinforcement. Chip existing R.C. curb (27.3m length) 0.05m deep from the top of slab, fabricate and weld additional 12mm Ø U-shaped stirrup to existing stirrups and longitudinal bars to extend the curb height to 0.30m as shown on the detailed drawing. Refer to welding and concrete materials & works specifications.

5.02 Maintenance of Mooring Bollards

Cleaning and repainting (Black) of 22 units - mooring fixtures as shown on the detailed drawing schedule. Refer to painting specification.

Schedule of Maintenance of Mooring Fixtures (Cleaning and repainting)

Fixture Type / Capacity	Quantity	Remarks
Mooring Bitt (50T)	6 units	Clean & repaint
Mooring Bitt (40T)	4 units	Clean & repaint
Bollard, T-Head (35T)	4 units	Clean & repaint
Mooring Cleats (5T)	6 units	Clean & repaint

5.03 Maintenance of Rubber Dock Fenders

Replace 6 pcs – 37.5mm x 150mm Stainless Bolt (54mm Hex Head) for tightening of RDF's. (Refer to the Drawings for schedule of maintenance)

VI. MAINTENANCE OF WAREHOUSE BUILDING NO. 1

6.01 Repair and Repainting Works (Eave Ceiling, Fascia Board)

Refer to detailed drawing for the repair fascia board using 0.8mm thk plain G.I. sheet and 1/8" x 1/2" blind rivets as fastener. The surface to be painted should be free from dirt, rust, oil or any substance that may reduce adhesion of paint. It should be washed clean and dried, applied with one (1) coat of epoxy primer and two (2) coats of quick drying enamel (semi-gloss) after the primer had considerably dried. Painting should be applied using air spray.

VII. MAINTENANCE OF WAREHOUSE BUILDING NO. 2

7.01 Maintenance of Roofing, Gutter and Parapet

Refer to detailed drawings for the replacement of damaged corrugated G.I. sheet roofing (0.60mm thk.), gutter (0.60mm thk.) and corrugated plastic roofing (2mm thk.). Should be fastened by tek screw with neoprene washer. All lapping and tek screws of existing roofing, ridge roll, gutter and flashing must be checked from leak, replace tek screw if necessary and should be applied with elastomeric sealant.

7.02 Painting Works (Walls, Roofing & Parapet, Trusses, Purlins, Parapet Frame, Tension Rods)

Refer to painting specification.

7.03 Maintenance of Electrical System

Replace all save bulb with 10W LED Daylight Bulb with E27 Base. For inside globe lamps, replace bulbs with 50W LED bulbs, daylight, 5000 lumens, 220V, E40 base.. Reinstall detached globe lamp with connection as shown in the drawings. Replace existing 4 sets – 2 gang lighting switches with new 2.00mm² THHN wire for rewiring in 1/2" Ø PVC conduit. Replace all 5 sets – duplex convenience outlet (weatherproof type).

Contractor shall be responsible to check, repair (if necessary) and test all electrical system including power, lighting and auxiliary installations for proper operation of the system.

VIII. MAINTENANCE OF PORTLIGHTS

8.01 Maintenance of Busted Street Lights

Remove 5 units defective port light from light pole and replace by LED street Light (120 W , 220V, Die Cast Alum alloy housing & tempered glass cover, 14,000 lm, IP65 or IP66, Color: Daylight). Check and repair electrical wirings if necessary.

IX. MAINTENANCE OF ACCESS ROAD

9.01 Demolition of Damaged Pavement and Removal of Unsuitable Materials

Demolition of damaged pavement and removal of unsuitable materials subject for re-blocking as shown in the drawing and refer to dismantling, demolition and excavation works specification.

Excavations below indicated depths will not be permitted except to remove unsatisfactory material. Unsatisfactory materials encountered below the grades shown shall be removed as directed and replaced with satisfactory materials; satisfactory materials below the depths indicated without specific direction of the Engineer shall be replaced at no additional cost to PPA.

9.02 Subgrade and Base Preparation (Supply, Place and Compact)

Selected fill materials should be compacted in every 0.15m layers. Base preparation shall not begin until construction below finish grade has been approved prior to laying and compaction of 0.15m thk. base course materials.

9.03 Supply and Place Concrete for Pavement including Protection (3,500 @ 14 days)

Refer to concrete materials and works specification.

X. CLEARING WORKS

The contractor shall clear the project site from all waste, and excess materials/salvage materials. All salvaged / excess materials shall be properly accounted upon completion of the project and shall be turned over to PPA.

PHILIPPINE
PORTS
AUTHORITY

PORT MANAGEMENT OFFICE
PALAWAN

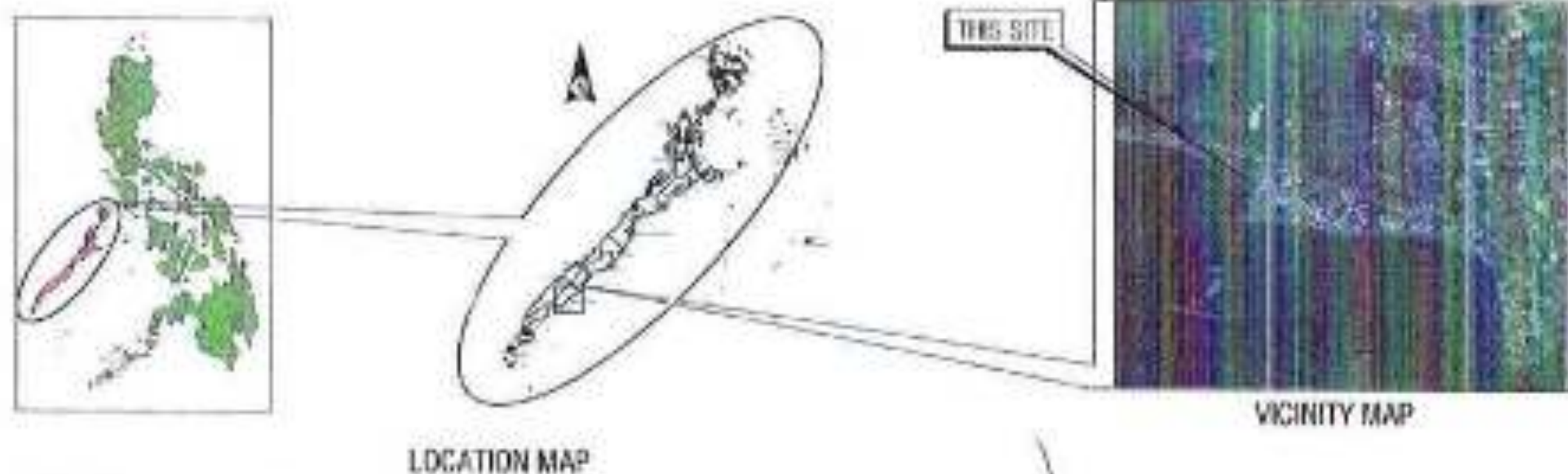
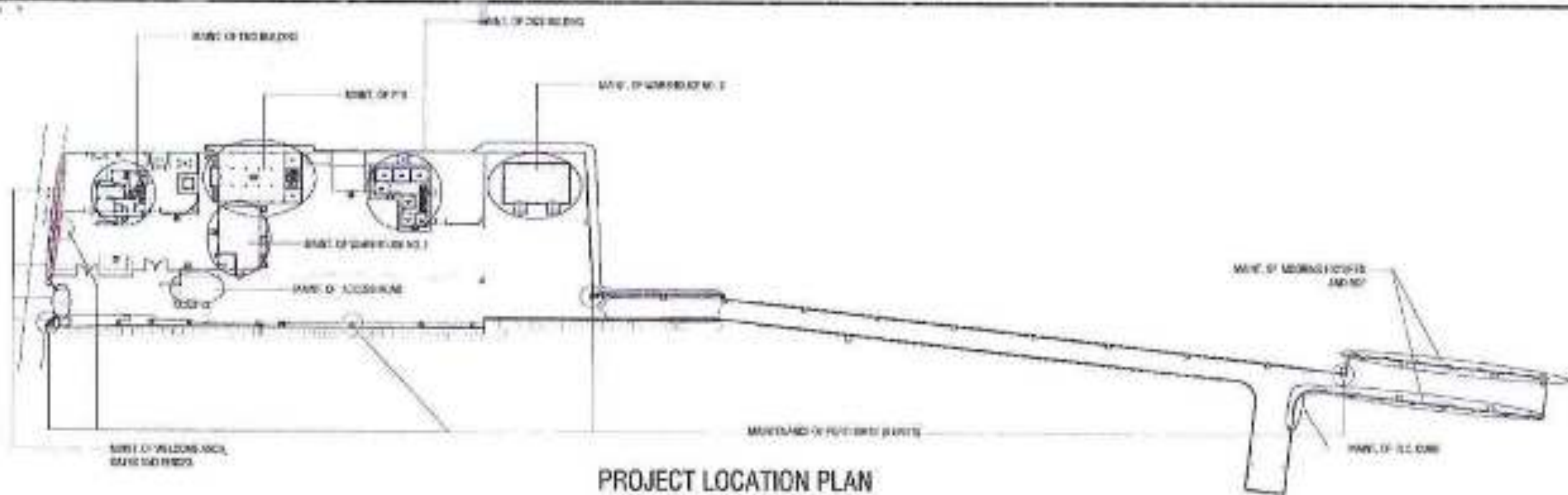


CONSTRUCTION DRAWINGS

VARIOUS MAINTENANCE OF PORT PHYSICAL FACILITIES
PORT OF BROOKE'S POINT

MUNICIPALITY OF BROOKE'S POINT

PALAWAN





EXISTING ELEVATION



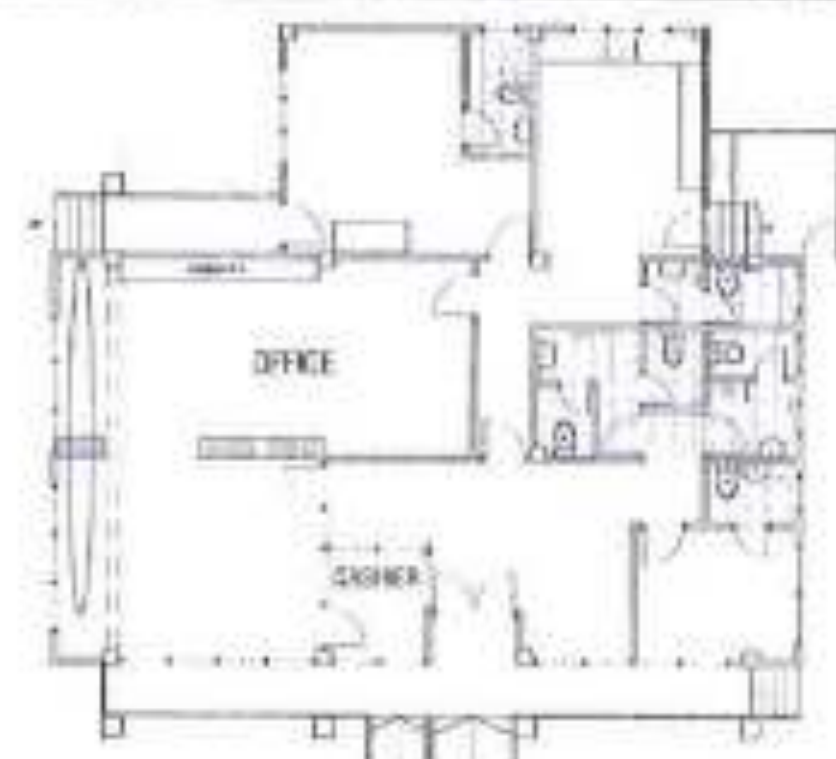
ELEVATION OF PROPOSED REPAIR

CONCRETE (HEAVY DUTY)
TO BE REPLACED INCLUDING
ADJACENT TUBULAR COLUMNS
(SHOULD BE FULLY EXPLODED
TO REVEAL BLINDING STATE)

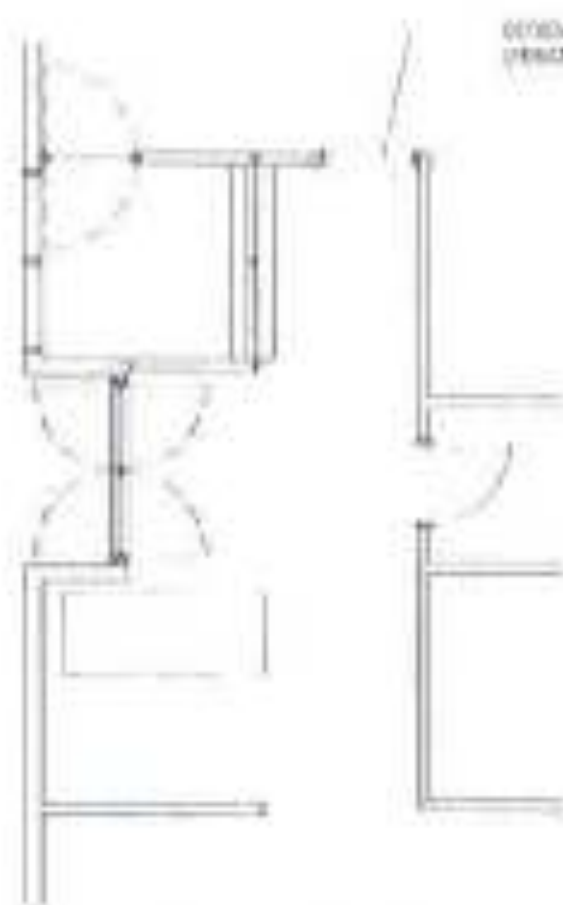
STEEL 6 IN THICK WOOD
GLASS WITH SHUT DOWN IN
DOOR (APPLY SEALANT)

REINFORCED GLASS DOOR

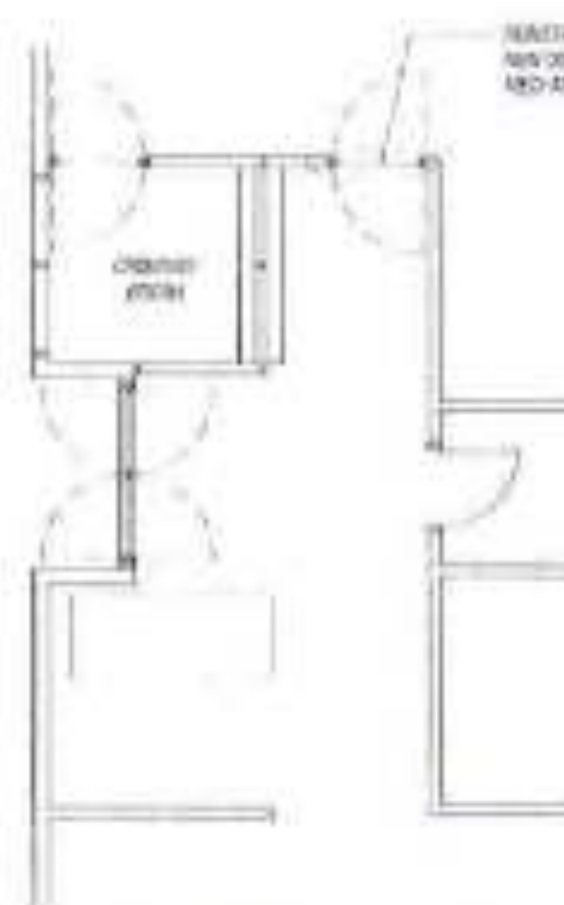
PROVIDE RECESSED
TYPE DOWN LIGHTS



EXISTING OFFICE LIGHTING LAYOUT



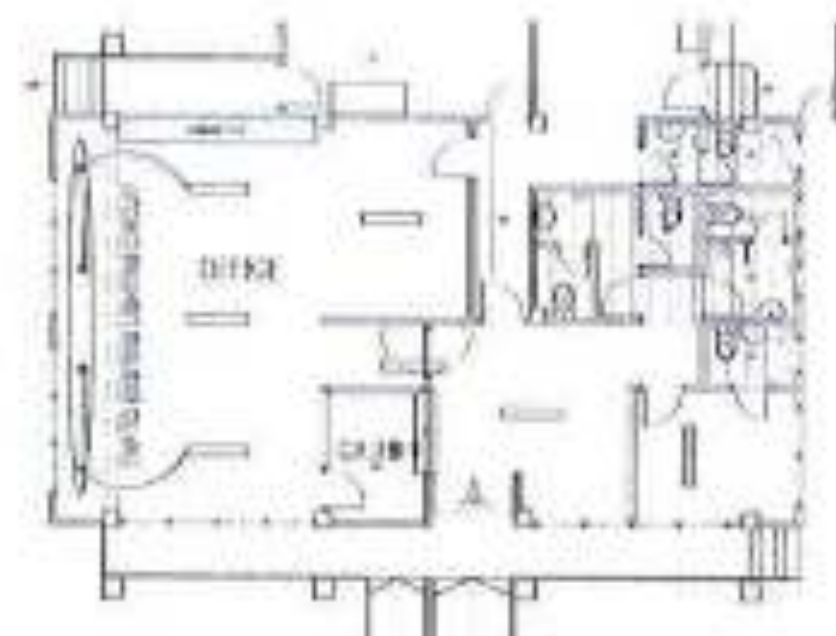
EXISTING FLOOR PLAN



PROPOSED REPAIR LAYOUT

RECESSED TYPE
DOWN LIGHTS TO BE
REPLACED

WOOD FLOORING TO
BE REPLACED



PROPOSED OFFICE LIGHTING LAYOUT

REPAIR OF OFFICE DOOR (TWO OFFICE)

	<p>PROJECT NAME: REPAIR OF PUBLIC PHYSICAL FACILITIES</p> <p>PORT OF BROOKES POINT, BROOKES POINT, PALAU</p>	<p>DESIGNED BY: RELIANT ENGINEERING ARCHITECTS, BROOKES POINT</p>	<p>DESIGNED BY: RELIANT ENGINEERING ARCHITECTS, BROOKES POINT</p>	<p>DESIGNED BY: RELIANT ENGINEERING ARCHITECTS, BROOKES POINT</p>	<p>DATE: 10/10/2010</p> <p>REVISIONS: 1.0 - 10/10/2010</p> <p>1/14</p>
--	--	---	---	---	--

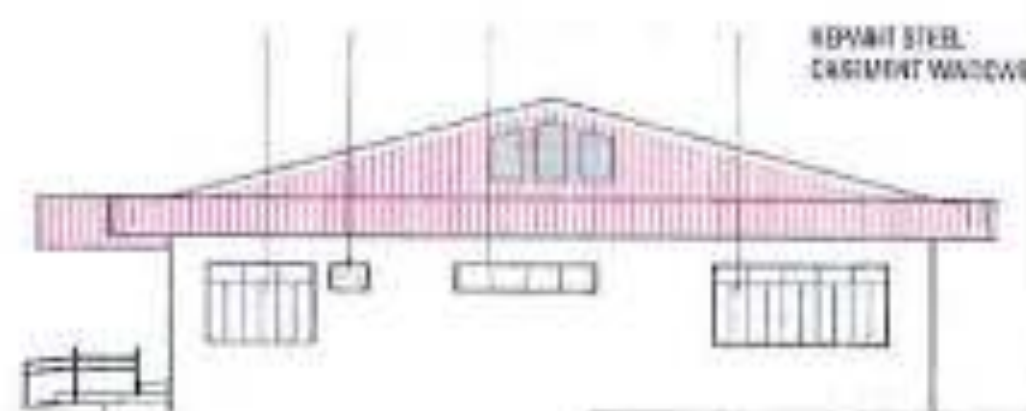


FRONT ELEVATION SHOWING THE PROPOSED STAINLESS
SIGNAGES (PASSENGER TERMINAL BUILDING)

SCALE 1"=10' 0"

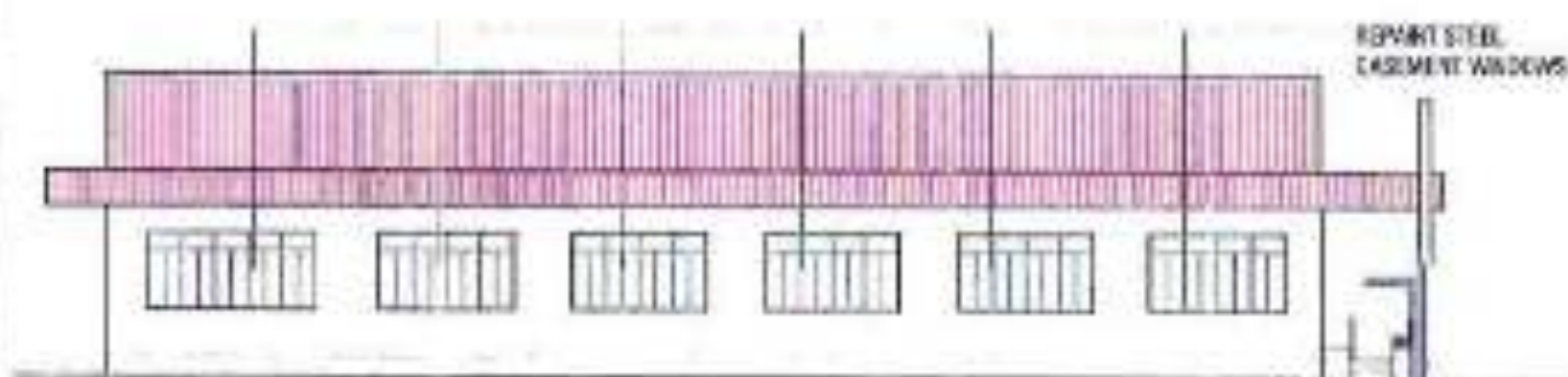
NOTES

- FOR REPAIRING OF PAINTS:
- CLEAN SURFACE, APPLY 2 COATS OF GUNN'S WOOD PRESERVATIVE (GUNN'S 200)
- FINISH COAT
- FOR REPAIRING OF PAINTS:
- CLEAN SURFACE, REMOVE RUBBER, APPLY 1 COAT OF GUNN'S WOOD PRESERVATIVE, FINISH COAT OF GUNN'S WOOD PRESERVATIVE (GUNN'S 200) FINISH COAT
- FOR REPAIRING OF WINDOW FRAMES AND CASINGS:
- CLEAN SURFACE, REMOVE RUBBER, APPLY 1 COAT OF GUNN'S WOOD PRESERVATIVE, FINISH COAT OF GUNN'S WOOD PRESERVATIVE



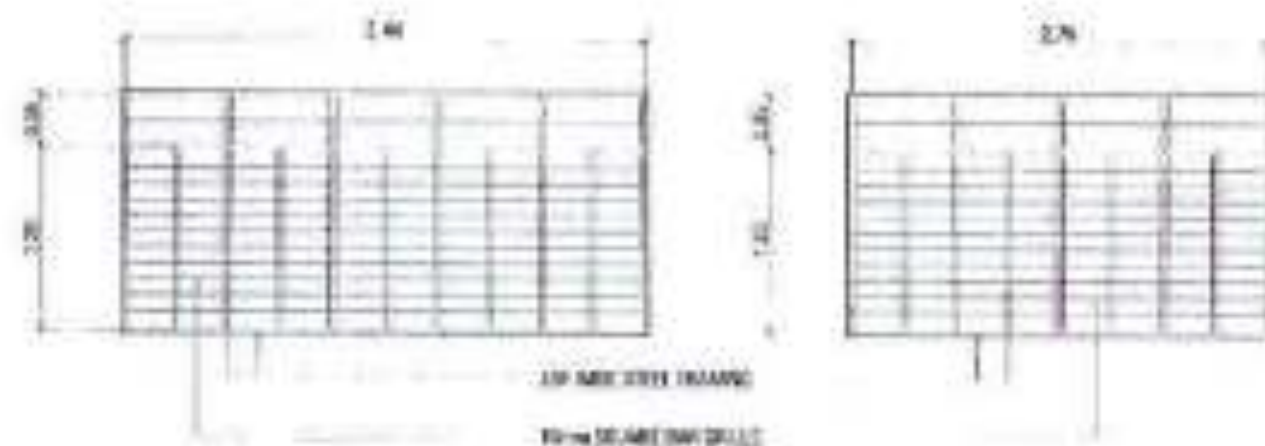
REAR ELEVATION

SCALE 1"=10' 0"



LEFT SIDE ELEVATION


SCALE 1"=10' 0"

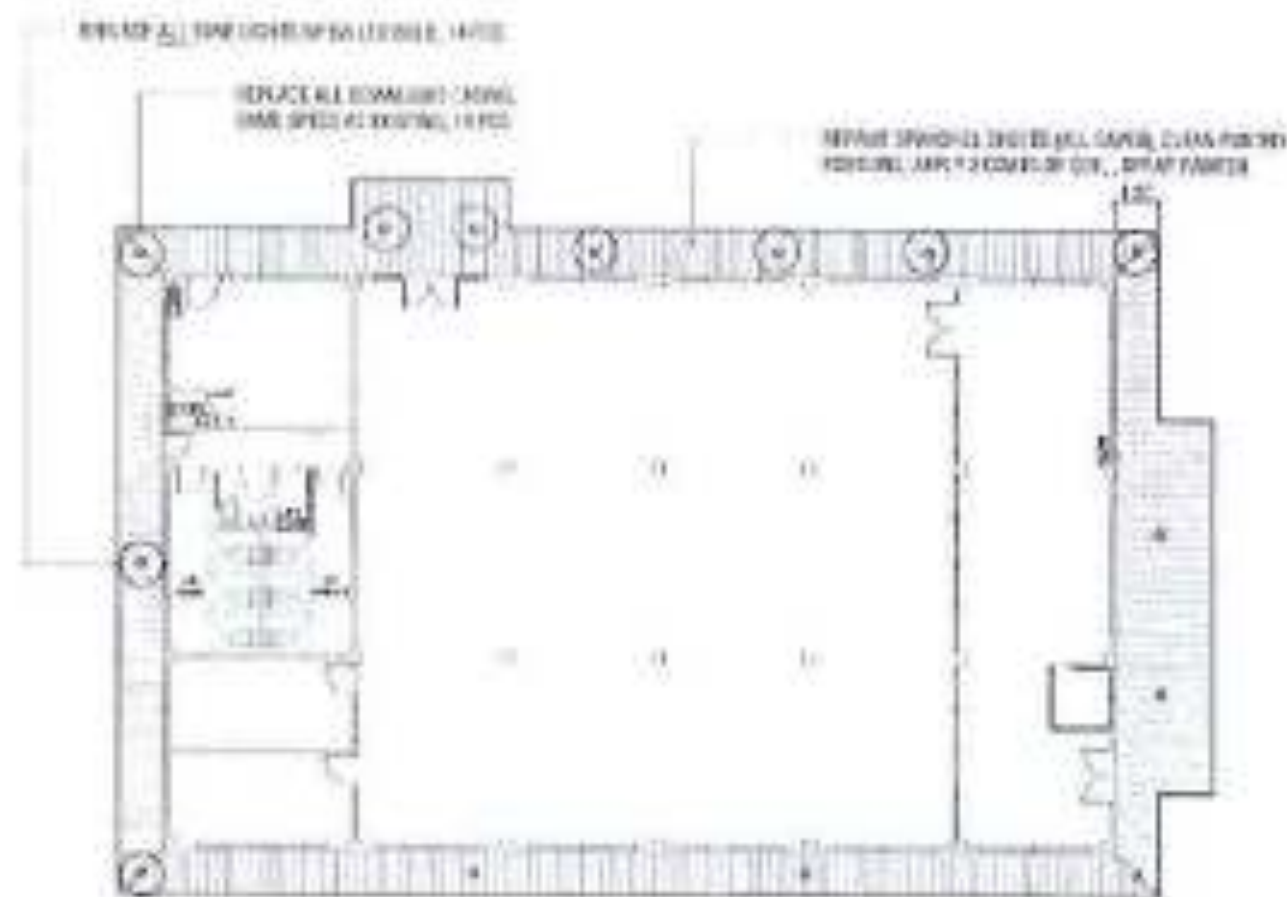
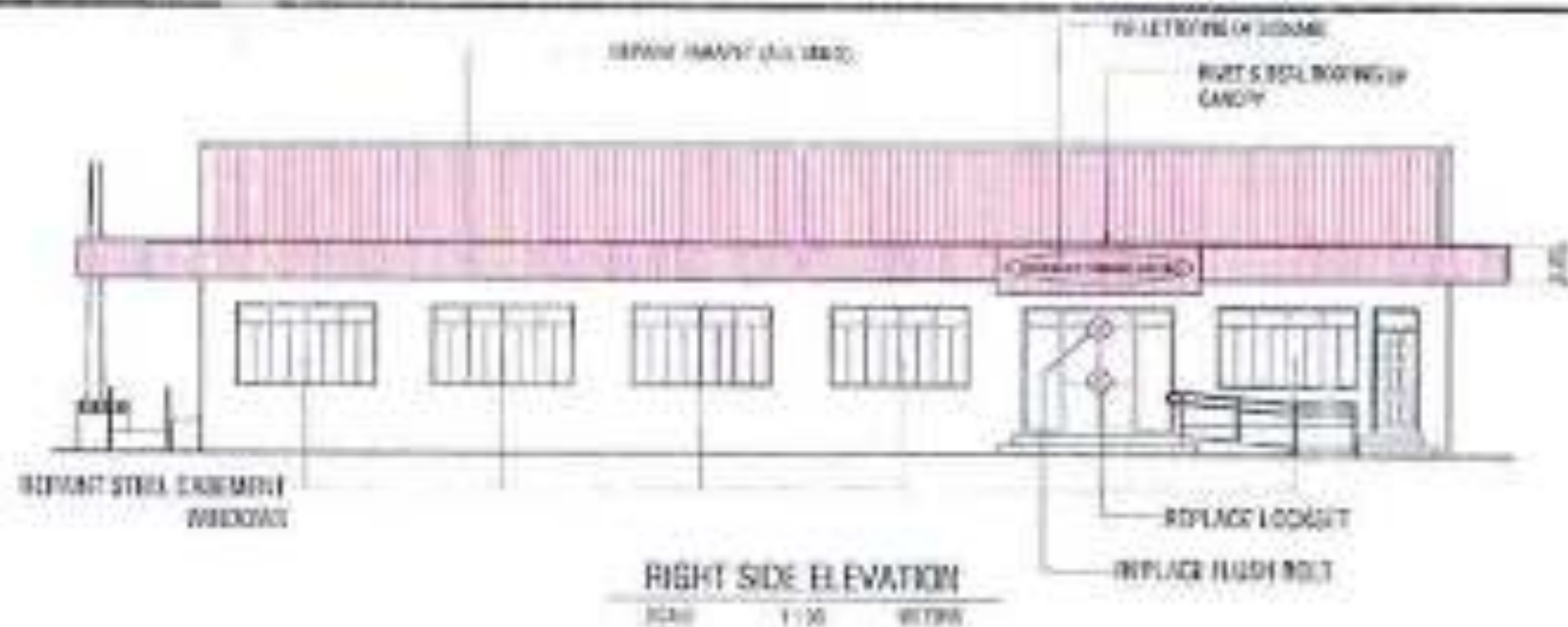


DETAIL OF CASEMENT WINDOWS (FOR REPAINTING)

SCALE 1"=10' 0"

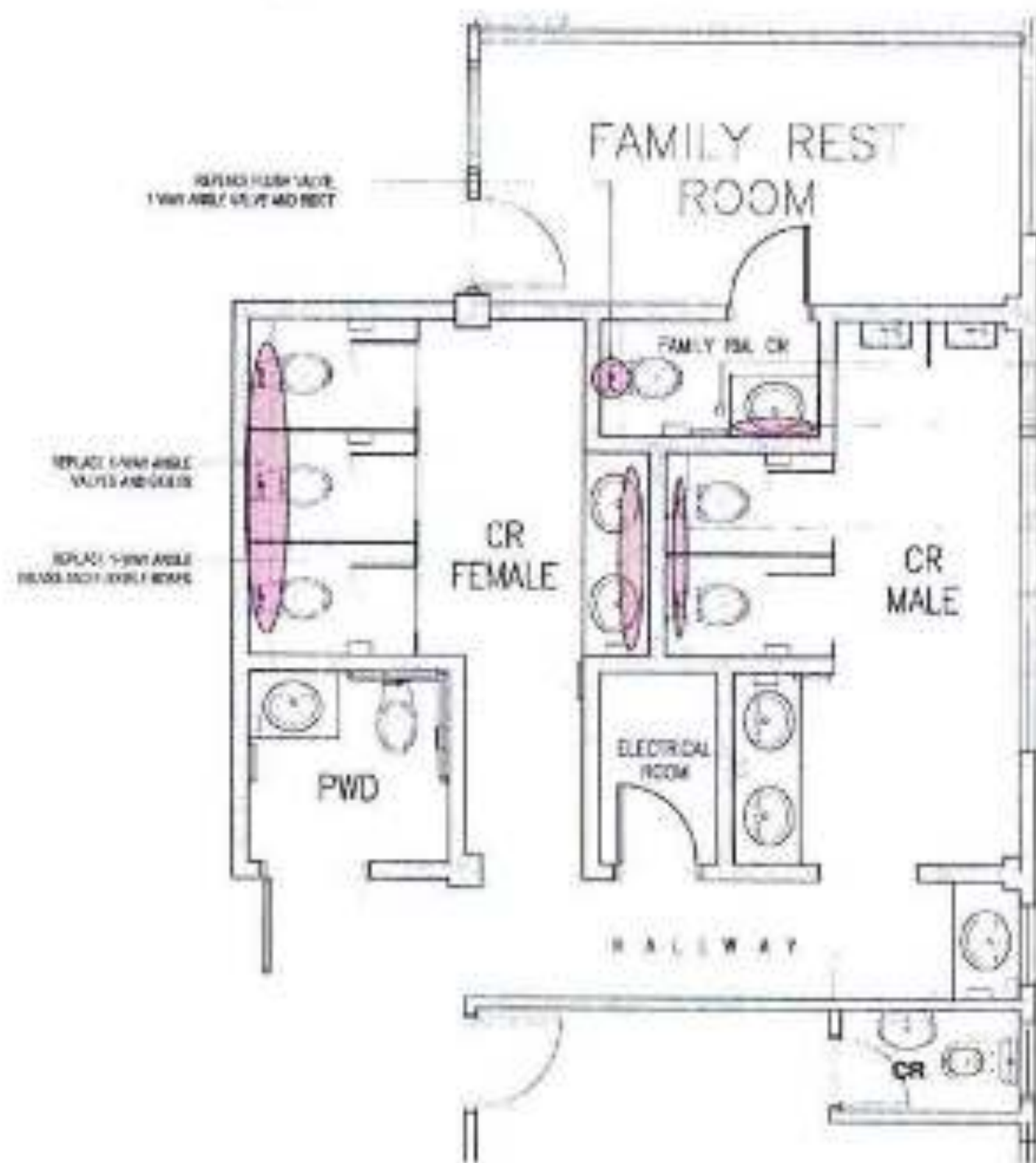
MAINTENANCE OF PASSENGER TERMINAL BUILDING

 <p>PORT OF SAN DIEGO SAN DIEGO, CALIFORNIA</p>	<p>PROJECT LOCATION VARIOUS MAINTENANCE OF PORT PHYSICAL FACILITIES PORT OF SAN DIEGO, SAN DIEGO, CALIFORNIA</p>	<p>OWNER PORT OF SAN DIEGO ACTING PHYSICAL PLANNING & DESIGN</p>	<p>DESIGNER BARLOW & SANDAY DIEGO ARCHITECTS</p>	<p>APPROVER FLORIAN M. SLOAN PORT MANAGER</p>	<p>DATE ISSUED LOCATION OF EACH DRAWING PROJECT LOCATION FOR REPAIRING WINDOW DETAIL FOR REPAIRING ALL WORK SHALL BE COMPLETED BY 10/1/2010</p>	<p>SHEET NO. 2/14 NOV 2009</p>
--	---	---	---	--	---	---

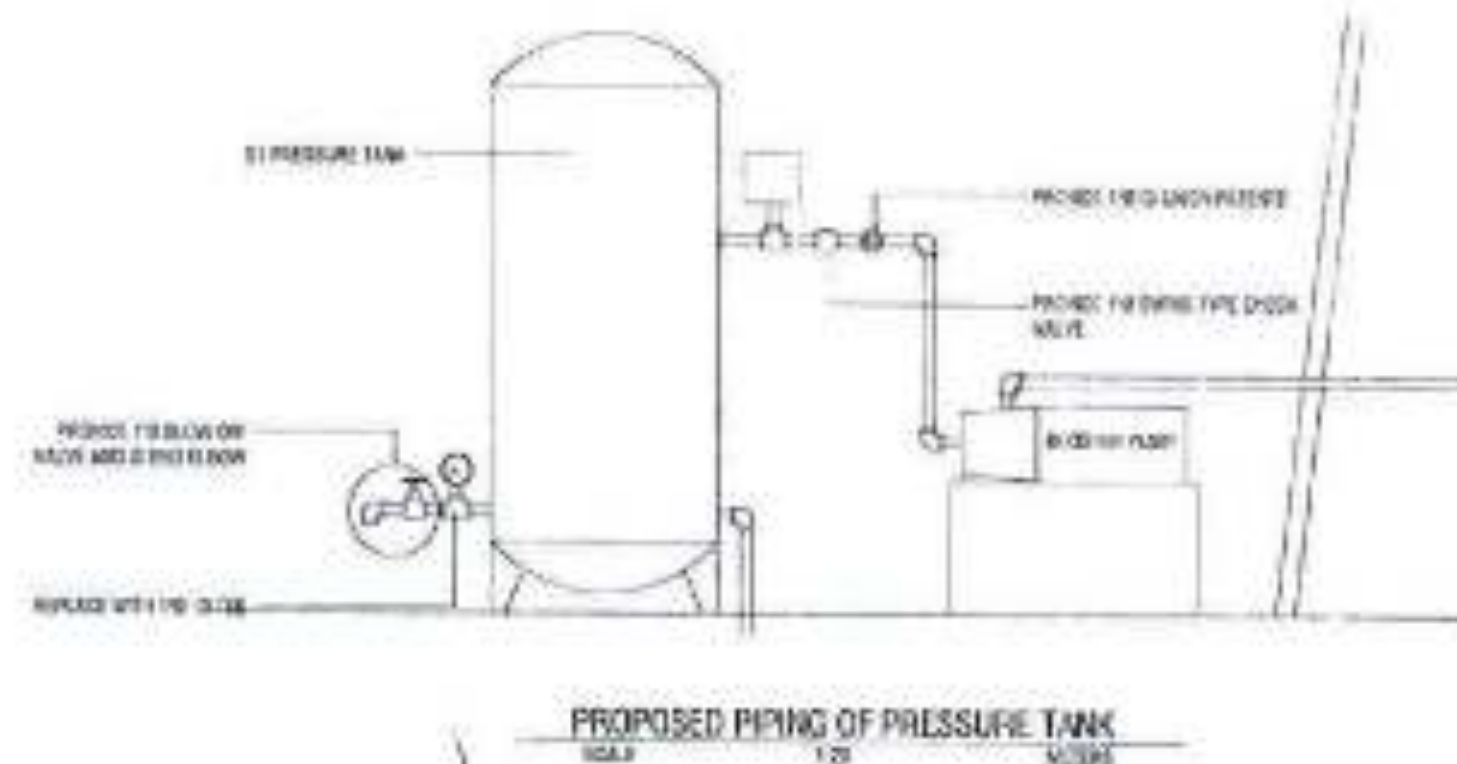
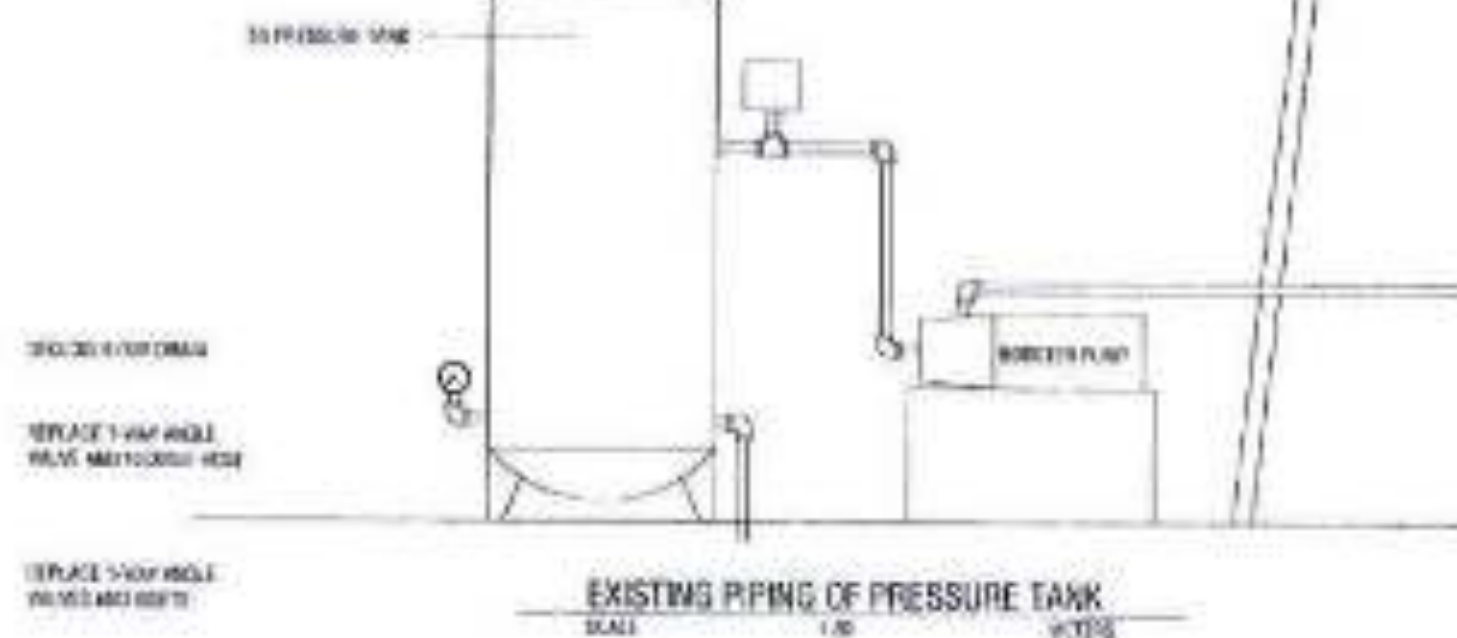


MAINTENANCE OF EAVE CEILING AND EAVE LIGHTINGS

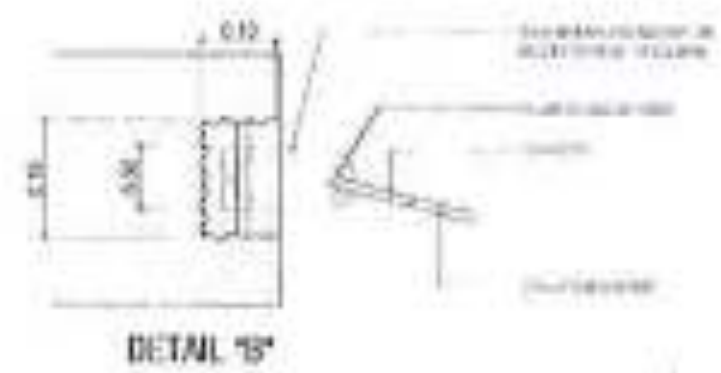
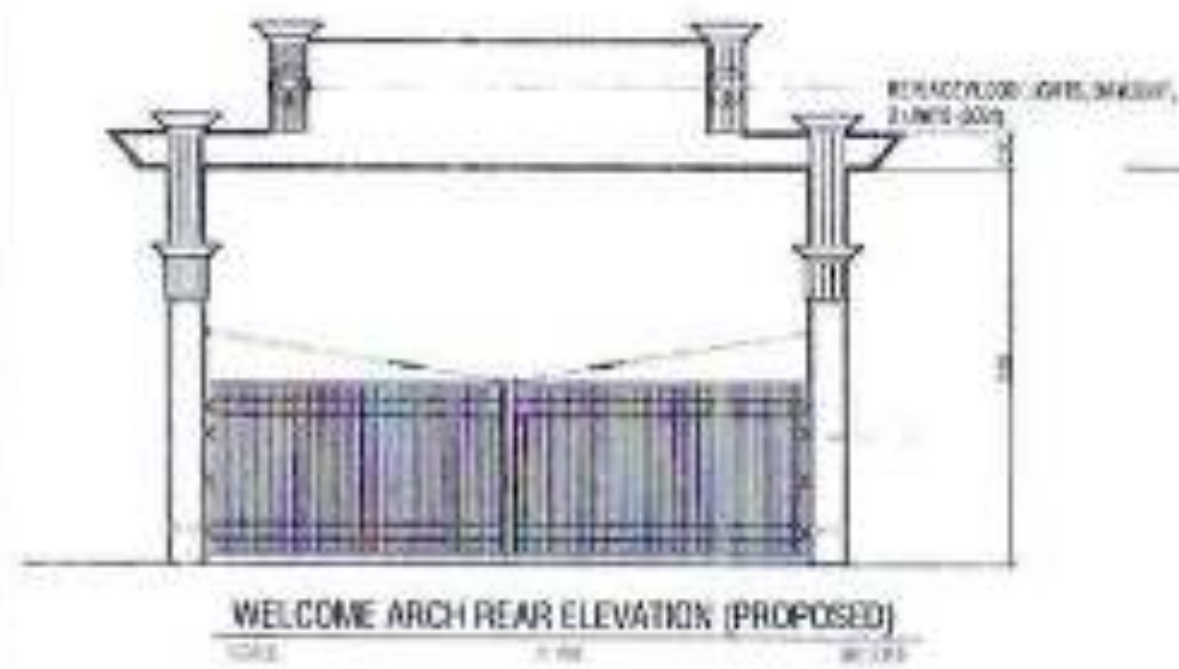
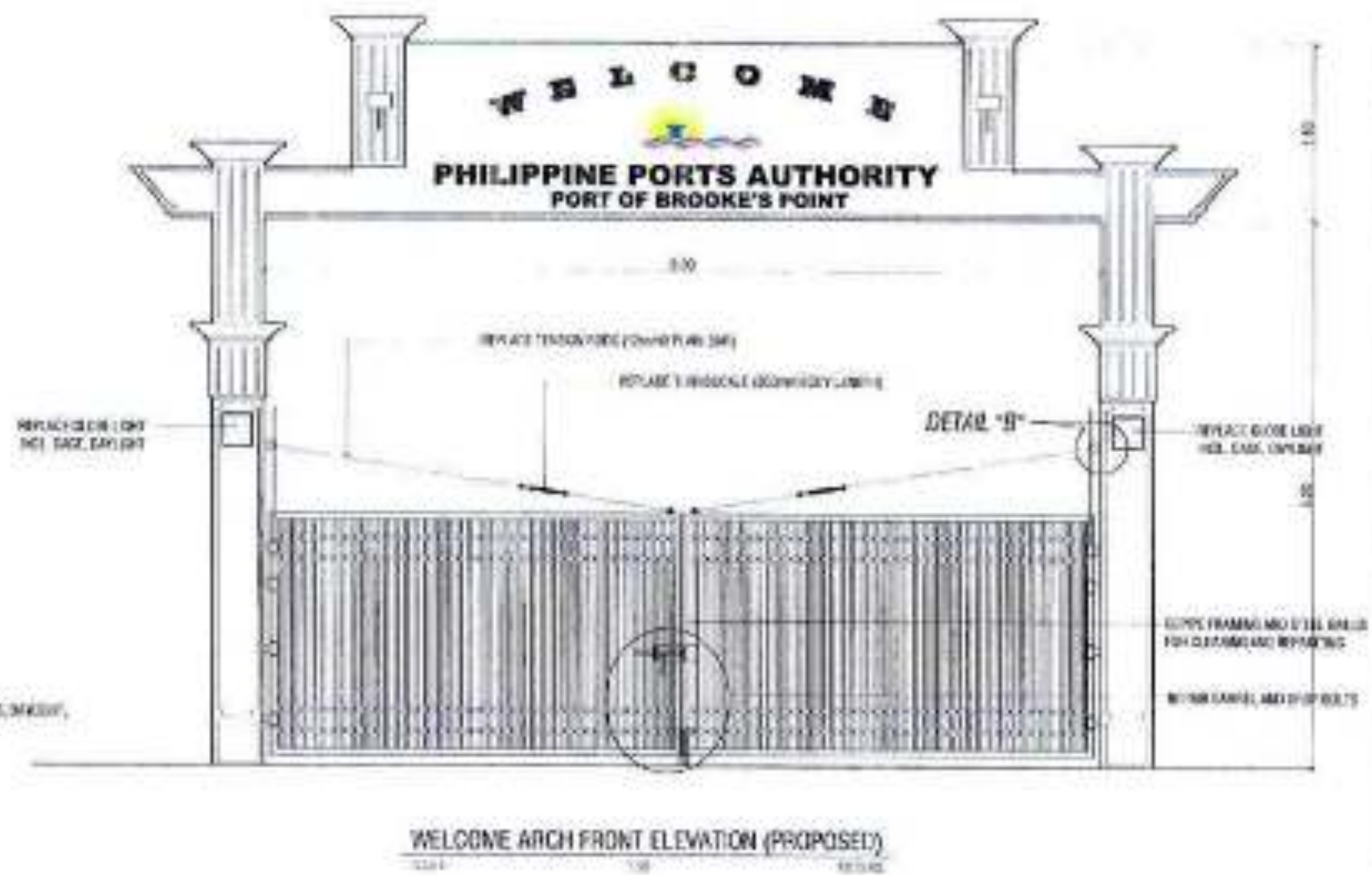
[illegible]



MAINTENANCE OF COMFORT ROOMS AT PTH
SCALE 1/8" = 1'-0"

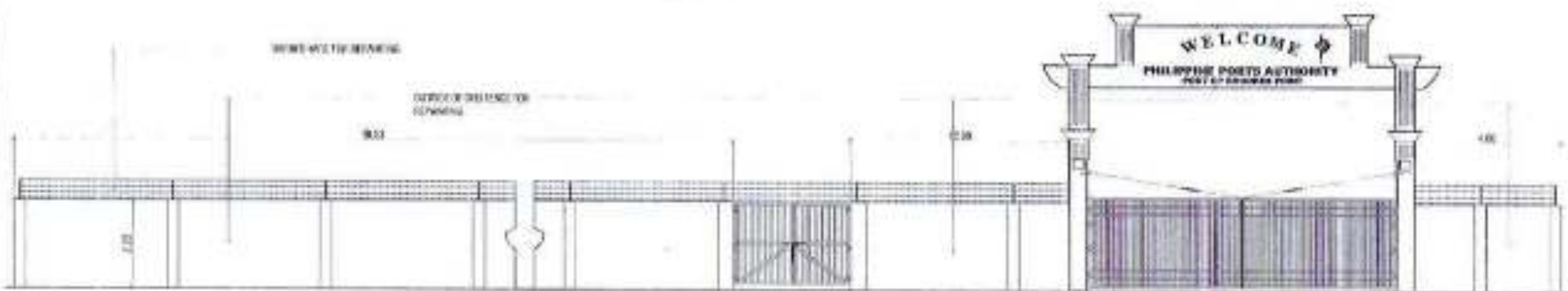
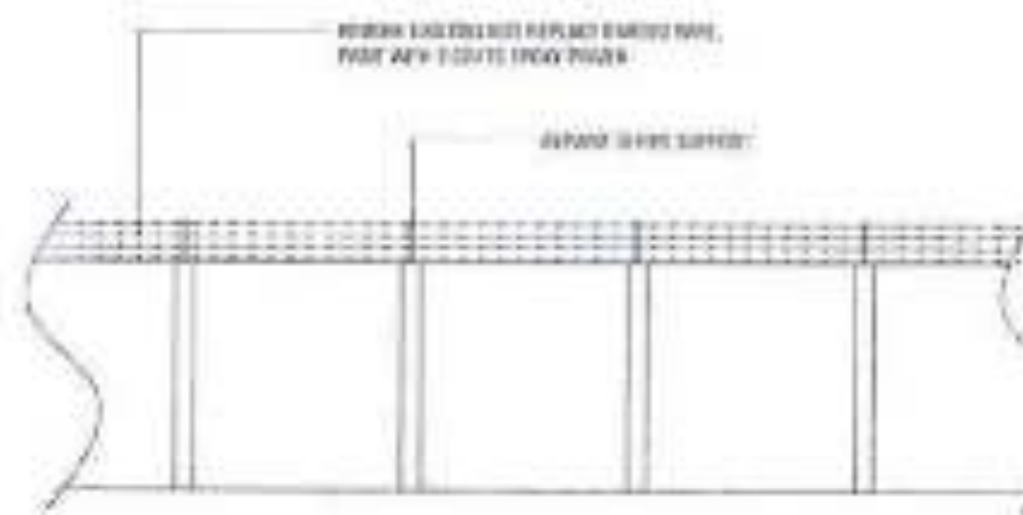


PROJECT SITE INFORMATION				MAINTENANCE OF PASSENGER TERMINAL BUILDING			
VARIOUS MAINTENANCE OF PORT PHYSICAL FACILITIES				LAYOUT OF PIPING AT COMFORT ROOMS OF PTH			
PORT OF SECONDO'S POINT, BRONX, NEW YORK				MAINTENANCE OF PASSENGER TERMINAL BUILDING			
DESIGNED BY: HELLY M. MADARCOS, ARCHITECT				CHECKED BY: E. J. WILSON, JR., ARCHITECT			
DRAWN BY: E. J. WILSON, JR., ARCHITECT				DATE: 10/1/2011			
PROJECT NO. 100-10000000000000000000				SHEET NO. 414			



- NOTES ON STEEL FABRICATING:**
1. REMOVE EXISTING PAINT
 1. CLEAN AND WASH EXISTING STEELS
 2. APPLY TWO COATINGS OF ZINC RICH PRIMER
 3. TWO COATINGS OF EPOXY PRIMER (ENAMEL PAINT (GALV. INK))

	PROJECT TITLE AND LOCATION VARIOUS MAINTENANCE OF PORT PHYSICAL FACILITIES PORT OF BROOKE'S POINT, BROOKE'S POINT, CALABARZON	DESIGNED BY REMY A. MADARICOS ACTING PRINCIPAL ENGINEER	APPROVED BY MARLON M. SAN DIEGO CEO	APPROVED BY ELWALDE M. UILSON PORT MANAGER	REVISIONS 1. REVISED FILE NAME: B-10115-PORT-MAINTENANCE-001	DATE 6/14/2020 SHEET NO. 6/14
--	---	--	--	---	---	--



ELEVATION OF FRONT CHB FENCING FOR REPAINTING

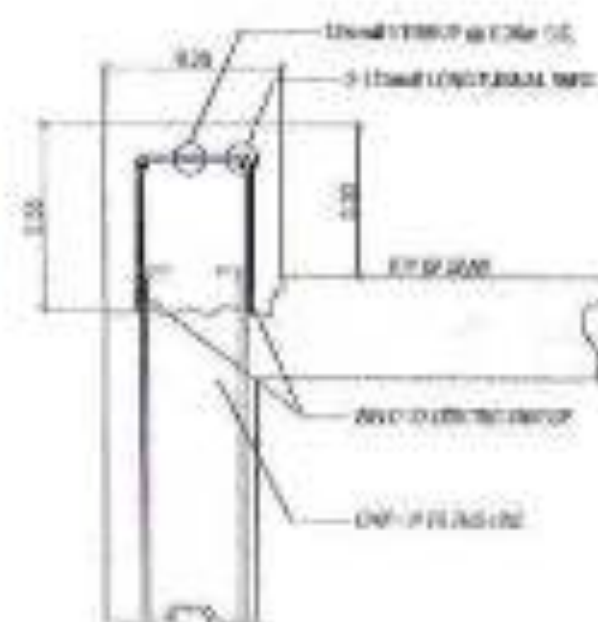
SCALE 1:100

PROJECT INFORMATION	PROJECT LOCATION	DESIGNER	APPROVED BY	APPROVED BY	DATE	REVISIONS
 <p>PHILIPPINE PORTS AUTHORITY PORT OF GABRIEL FERRER, MARINA DEL MONTE, CALABARZON</p>	<p>VARIOUS MAINTENANCE OF PORT PHYSICAL FACILITIES</p> <p>PORT OF GABRIEL FERRER, MARINA DEL MONTE, CALABARZON</p>	<p>RELLY B. BARRACOS ARCHITECT</p>	<p>MARLYN M. BAYANUEGO ARCHITECT</p>	<p>EDUARDO M. ULAN ARCHITECT</p>	<p>DATE: 05/05/2020</p>	<p>REVISIONS</p> <p>NO. 1</p> <p>DATE: 05/05/2020</p>

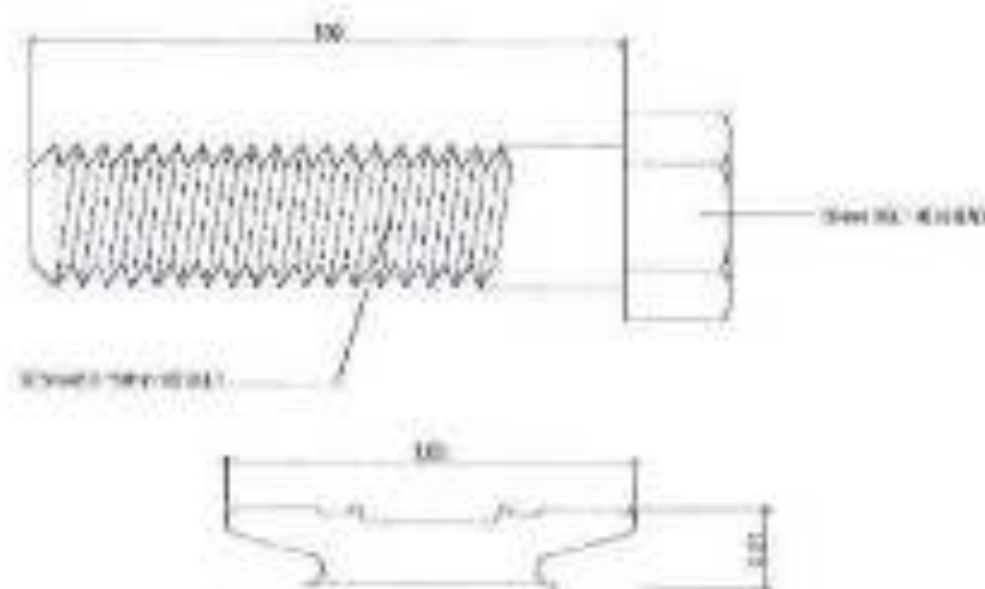
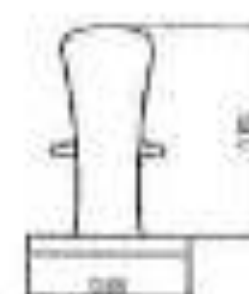
[illegible]

ISSUING OFFICE NO.	TYPE / QTY	REMARKS
001	01 - 1000000000	001-000
002	02 - 1000000000	002-000
003	03 - 1000000000	003-000
004	04 - 1000000000	004-000
005	05 - 1000000000	005-000
006	06 - 1000000000	006-000
007	07 - 1000000000	007-000
008	08 - 1000000000	008-000
009	09 - 1000000000	009-000
010	10 - 1000000000	010-000
011	11 - 1000000000	011-000
012	12 - 1000000000	012-000
013	13 - 1000000000	013-000
014	14 - 1000000000	014-000
015	15 - 1000000000	015-000
016	16 - 1000000000	016-000
017	17 - 1000000000	017-000
018	18 - 1000000000	018-000
019	19 - 1000000000	019-000
020	20 - 1000000000	020-000

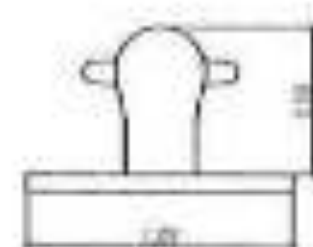
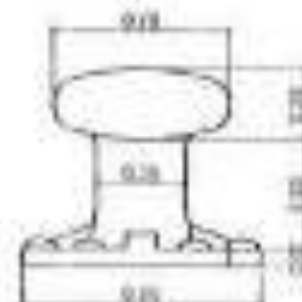
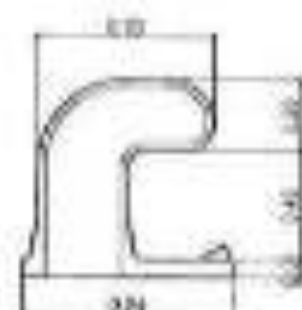
W/F #	TYPE	REMARKS
101	Y00 + 000	2000/10/10 10:00 10:00
102	Y00 + 000	2000/10/10 10:00 10:00
103	Y00 + 000	2000/10/10 10:00 10:00
104	Y00 + 000	2000/10/10 10:00 10:00
105	Y00 + 000	2000/10/10 10:00 10:00
106	Y00 + 000	2000/10/10 10:00 10:00
107	Y00 + 000	2000/10/10 10:00 10:00
108	Y00 + 000	2000/10/10 10:00 10:00
109	Y00 + 000	2000/10/10 10:00 10:00
110	Y00 + 000	2000/10/10 10:00 10:00
111	Y00 + 000	2000/10/10 10:00 10:00
112	Y00 + 000	2000/10/10 10:00 10:00
113	Y00 + 000	2000/10/10 10:00 10:00
114	Y00 + 000	2000/10/10 10:00 10:00
115	Y00 + 000	2000/10/10 10:00 10:00
116	Y00 + 000	2000/10/10 10:00 10:00
117	Y00 + 000	2000/10/10 10:00 10:00
118	Y00 + 000	2000/10/10 10:00 10:00
119	Y00 + 000	2000/10/10 10:00 10:00
120	Y00 + 000	2000/10/10 10:00 10:00

[illegible]

SECTION DETAIL OF H.C. CURB REPAIR

ST MONING IS SATS
IN UNITS

DOI: 10.1002/eqe.1411

401 INDOCHINA UNIT
(5 UNITS)35T T HEAD
(4 UNITS)

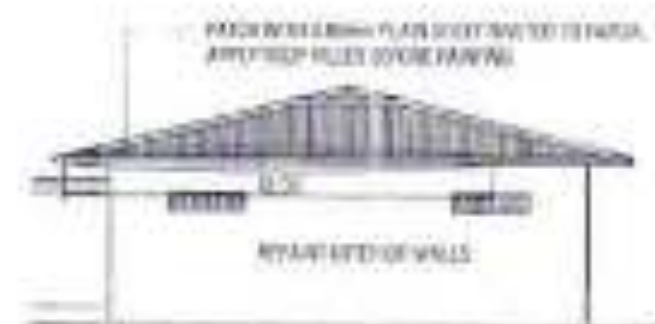
MAINTENANCE OF R.C. PIER



ON EACH SIDE OF PLAN SHEET REFER TO VIEW
APPLY BODY PAINT TO CEILING

REFLECTED EAVES CEILING PLAN

REFLECT ALL FRONT BOARD (FRONT OF DOOR)
PAINT 2 COATS OF ODE SEAMLESS



RIGHT SIDE ELEVATION



FRONT ELEVATION

LEFT SIDE ELEVATION

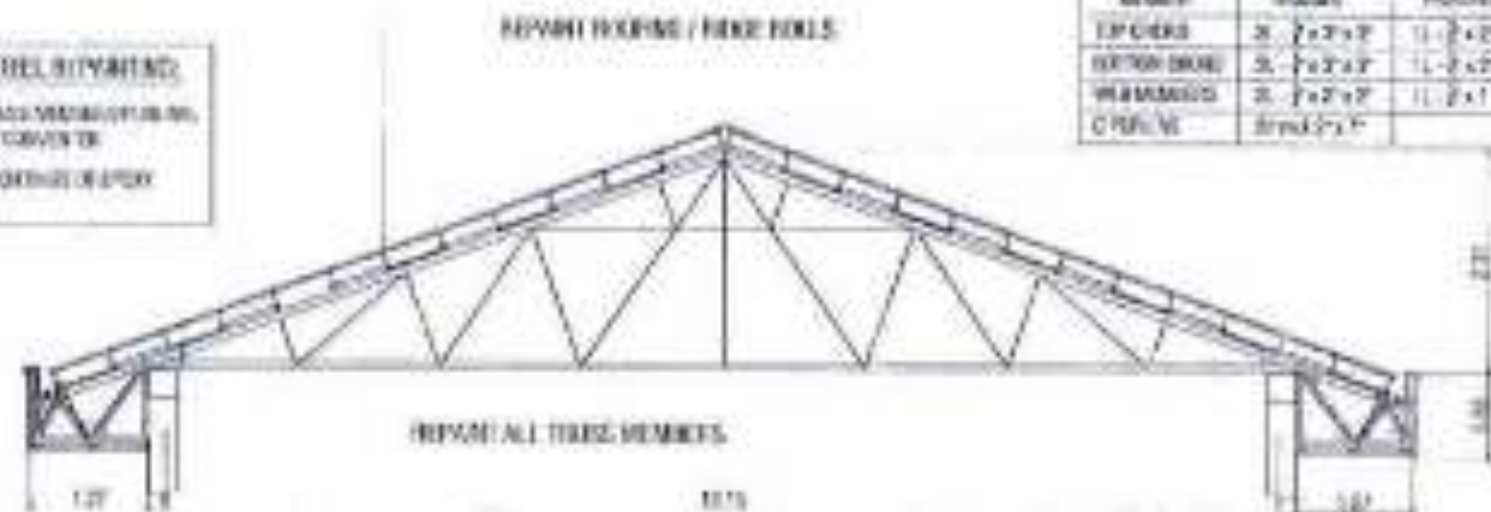
	<p>PROJECT FILE AND LOCATION</p> <p>VARIOUS MAINTENANCE OF PORT PHYSICAL FACILITIES</p> <p>PORT OF KORO'S PORT, BROKAS POND, PALAWAN</p>	<p>DESIGNER'S NAME</p> <p>RELY V. MARGARDO</p> <p>ARCHITECT, ENGINEER & DESIGNER</p>	<p>DESIGNER'S SIGNATURE</p> <p><i>[Signature]</i></p> <p>MARIONA MARGARDO</p> <p>DESIGNER</p>	<p>APPROVER'S SIGNATURE</p> <p><i>[Signature]</i></p> <p>ELIZABETH M. OLSON</p> <p>PORT MANAGER</p>		<p>SHEET NUMBER</p> <p>AS SHOWN</p> <p>FILE NAME: KORO'S PORT MAINTENANCE.DWG</p>	<p>DATE OF SHEET</p> <p>0-011-00</p> <p>9/14</p> <p>MAY 2017</p>
--	---	---	--	--	--	--	---



ROOF FRAMING PLAN
SCALE 1/8" = 1'-0"

NOTES ON STEEL ROOFING:

1. CLEAR TRUSS MEMBERS FOR ROOFING, ONLY NOT COVERED.
2. APPLY 2 COATS OF EPOXY PAINT.

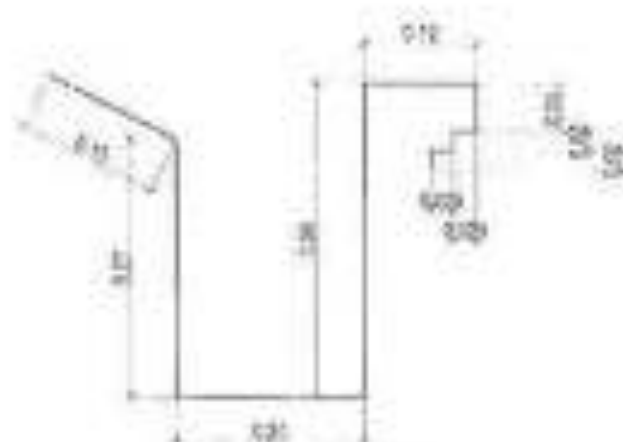


TRUSS DETAIL
SCALE 1/8" = 1'-0"

REPLACE ALL TRUSS JOINT PLASTIC
ROOFING JOINT PLASTIC

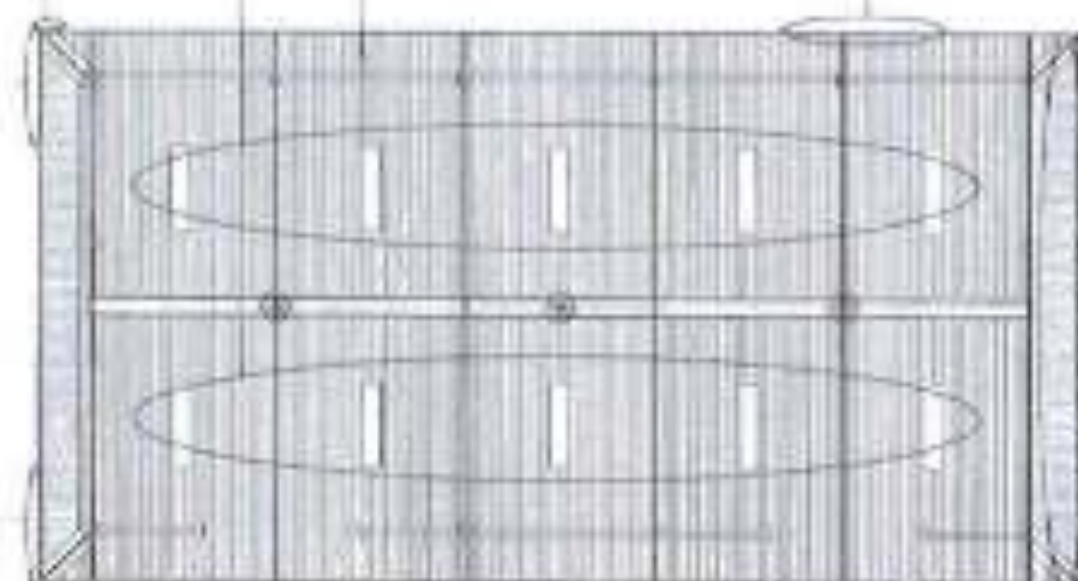
REPAIR ROOFING / RAKE ROOF

REPLACE 2" TYP. 8" DIA. THICK 1/2"



DETAIL OF GUTTER
SCALE 1/8" = 1'-0"

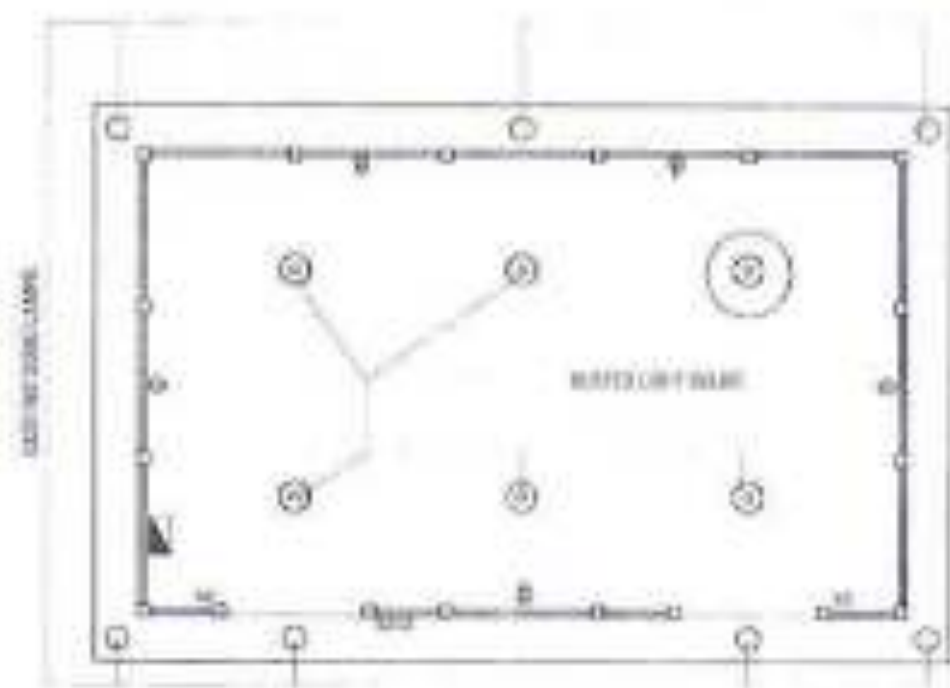
REPLACE ALL JOINTS TO BE REINFORCED



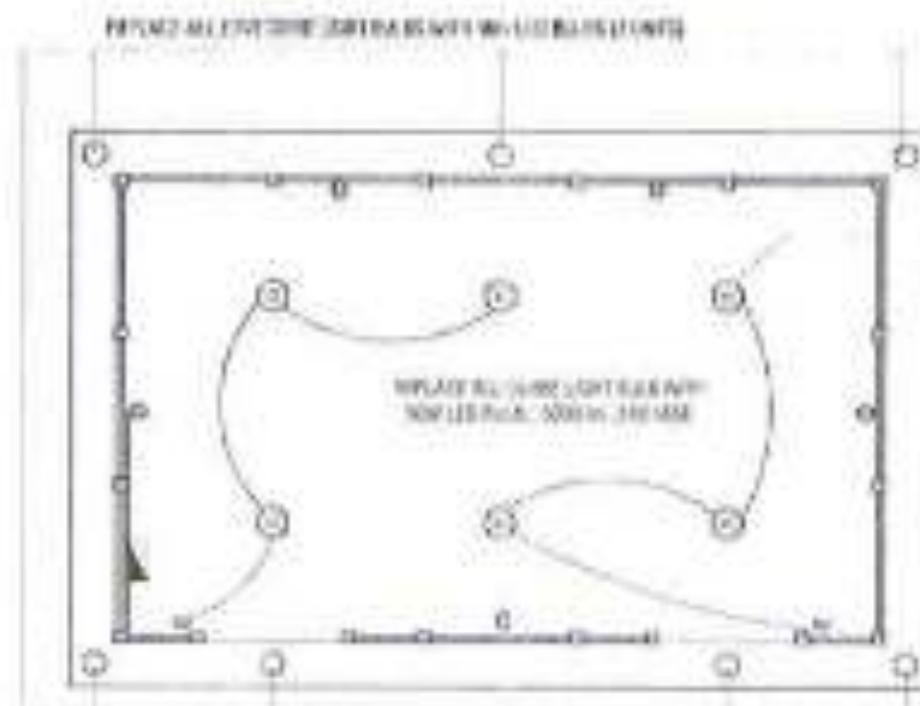
ROOFING PLAN
SCALE 1/8" = 1'-0"

REPLACE ALL JOINTS TO BE REINFORCED

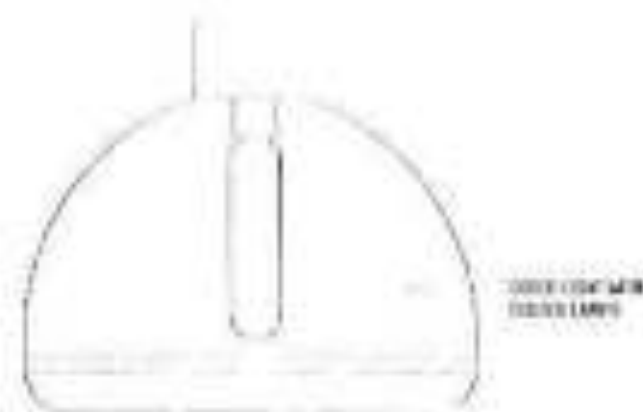
	<p>PROJECT TITLE AND LOCATION</p> <p>VARIOUS MAINTENANCE OF PORT PHYSICAL FACILITIES</p> <p>PORT OF BROOKS CO., BROOKS PORT, ALABAMA</p>	<p>DESIGNED BY</p> <p>RELLY W. MARCOS</p> <p>ARCHITECTURAL ENGINEER</p>	<p>DESIGNED BY</p> <p>ANDREA A. SERRAVALLO</p> <p>ARCHITECT</p>	<p>DESIGNED BY</p> <p>EWING M. NELSON</p> <p>ARCHITECT</p>	<p>DATE OF REVISION</p> <p>AS REVISION</p> <p>SEE NOTE - SHEET 2 FOR REVISIONS</p>	<p>REVISIONS OF SHEET NO. 2</p> <p>5/14</p> <p>MAY 2022</p>
--	--	---	---	--	--	---



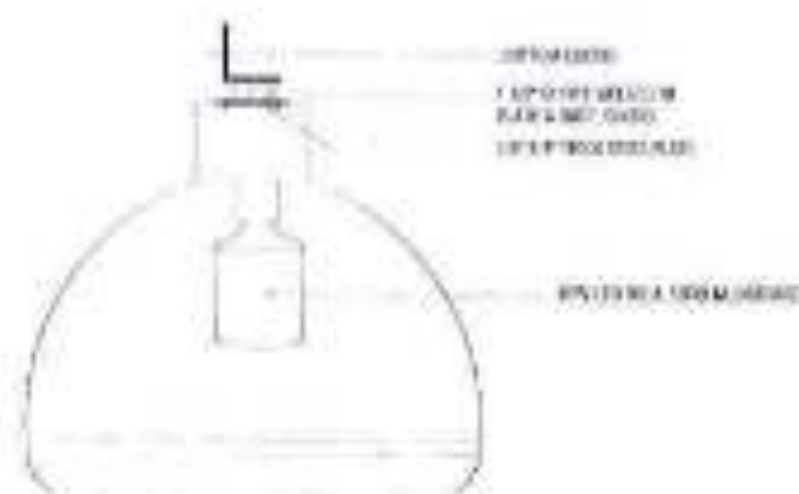
ELECTRICAL PLAN (EXISTING)
SCALE 1/8" = 1'-0"



ELECTRICAL PLAN (PROPOSED)
SCALE 1/8" = 1'-0"



EXISTING GLOBELIGHT
INSIDE WAREHOUSE



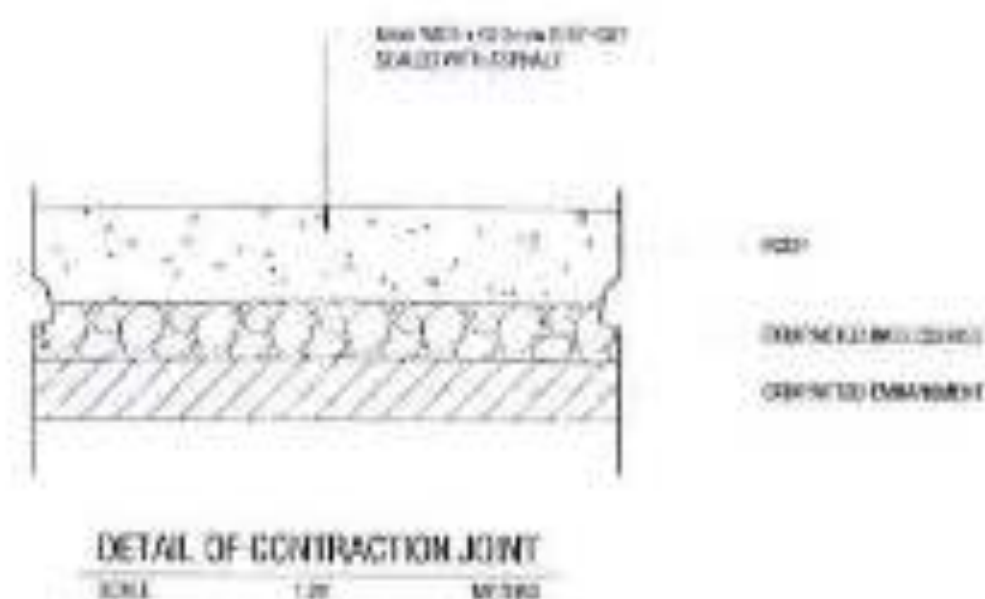
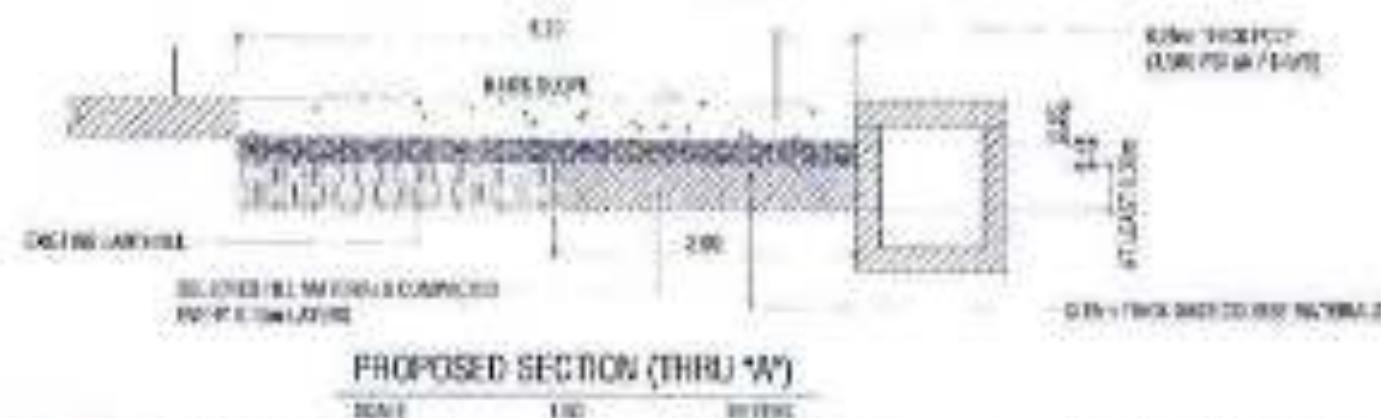
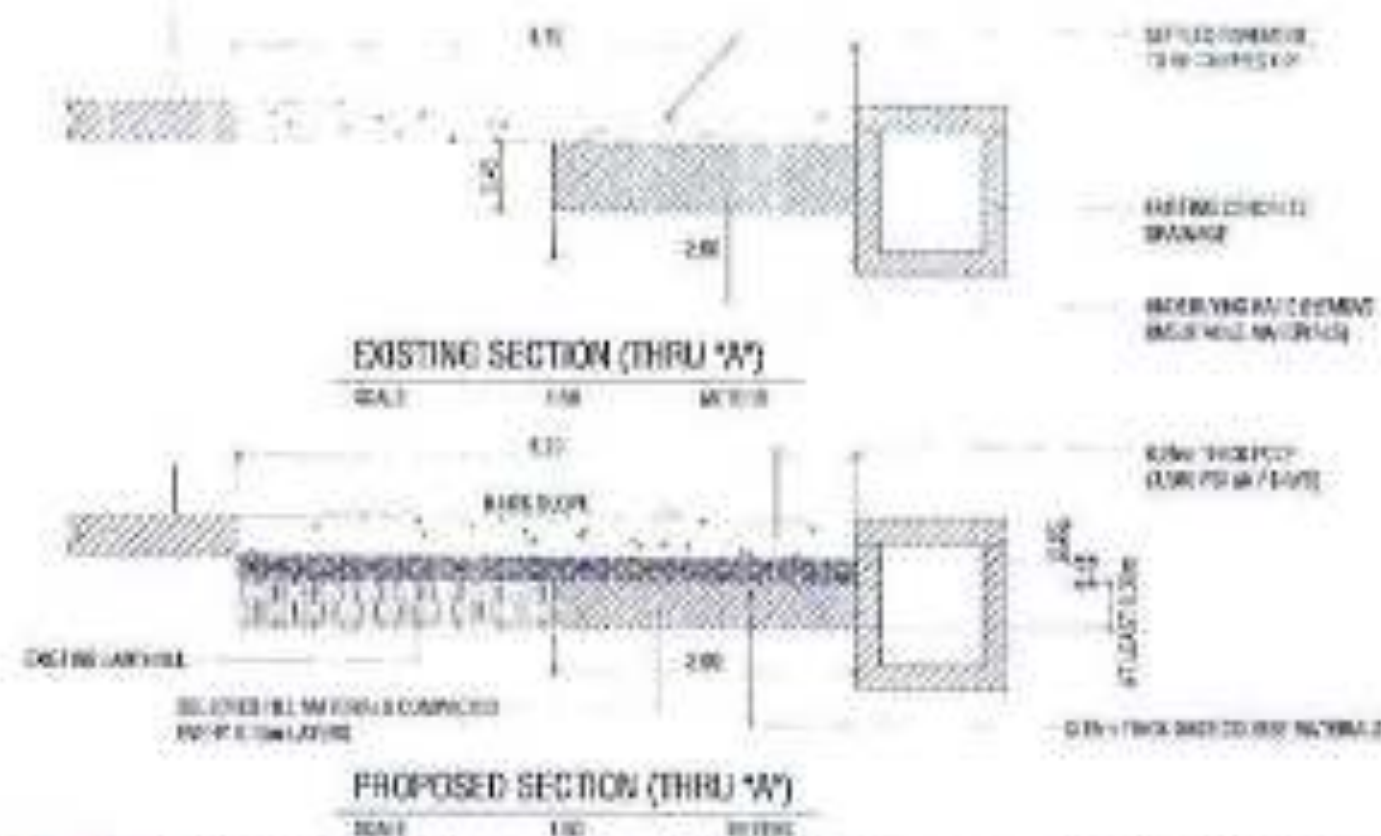
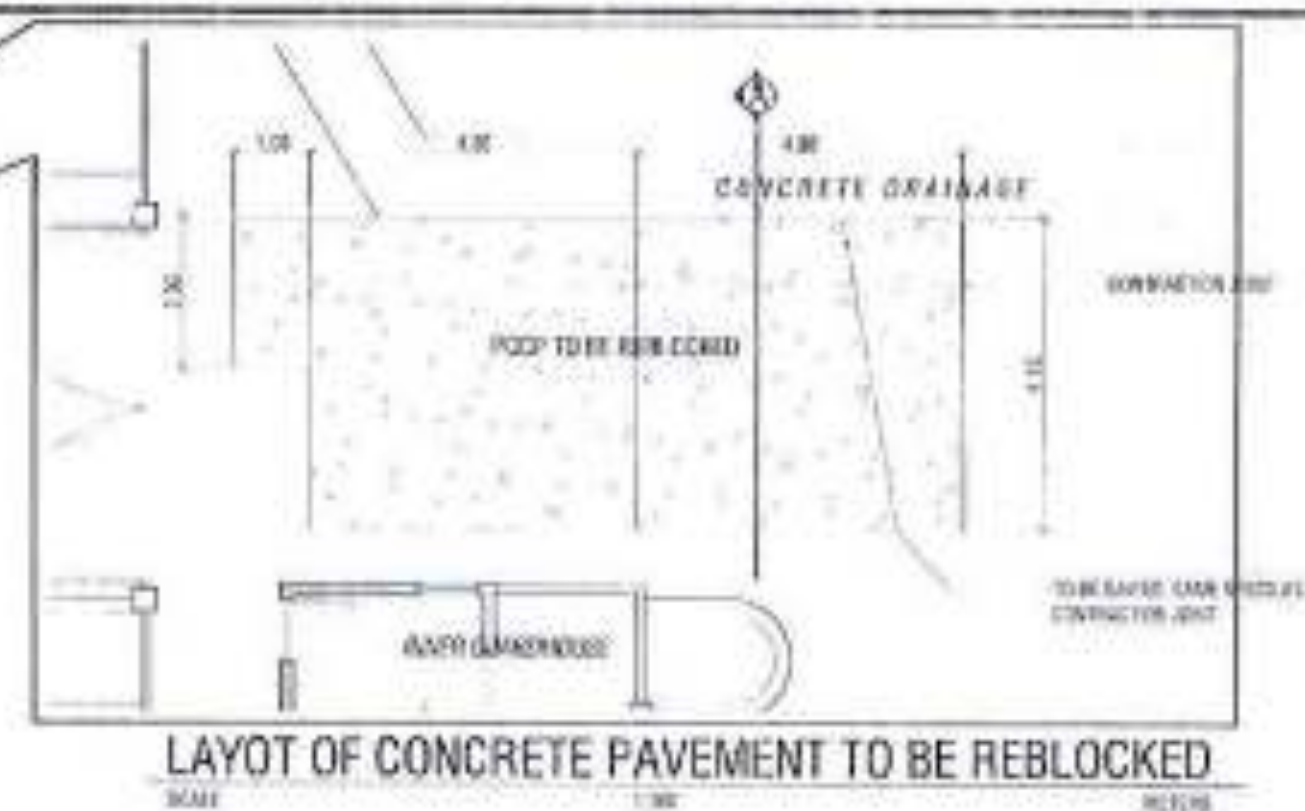
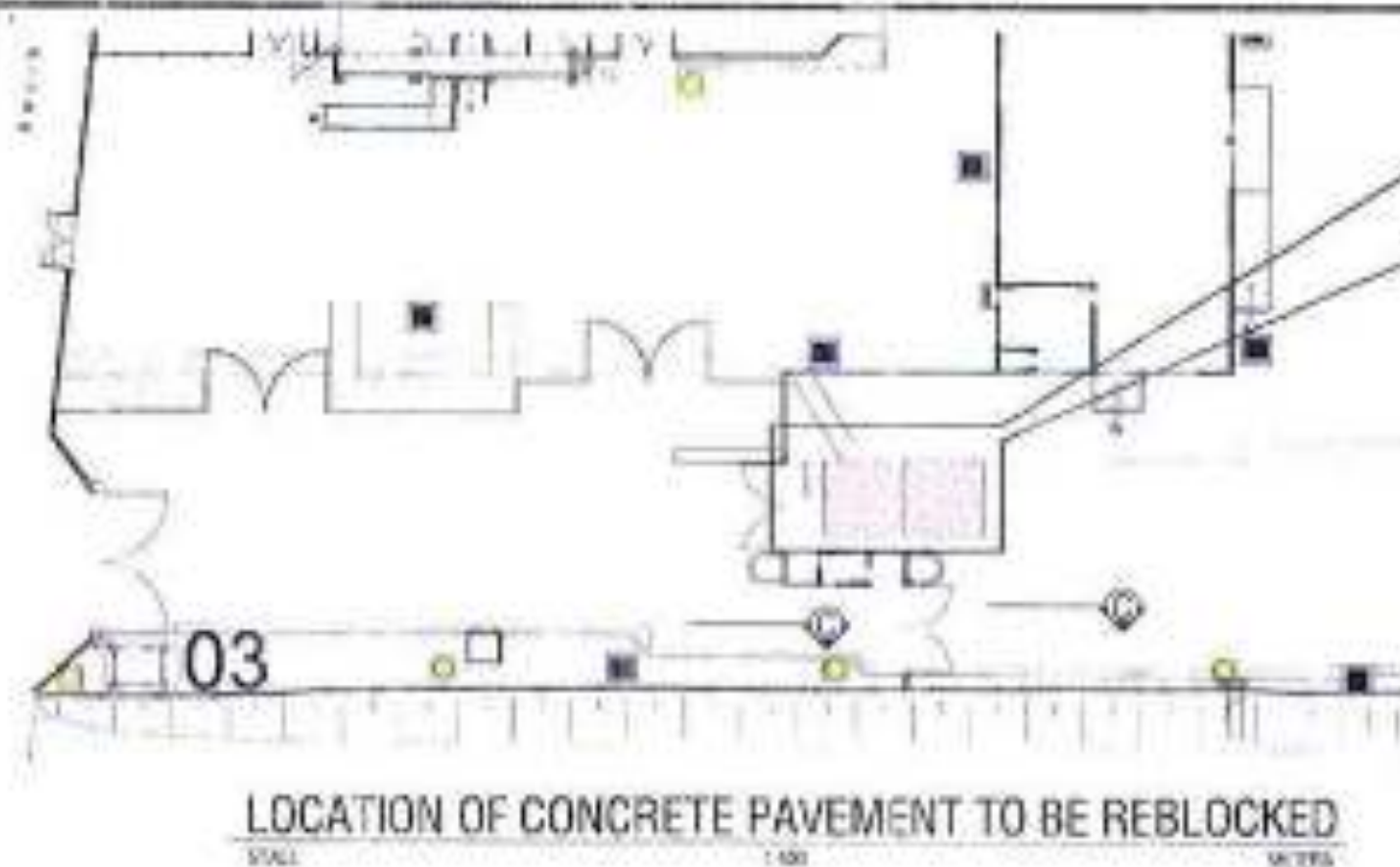
PROPOSED GLOBELIGHT
INSIDE WAREHOUSE



DOVE LIGHTS AT EAVES

DETAIL OF WAREHOUSE # 2 LIGHTINGS
SCALE 1/8" = 1'-0"

	<p>PROJECT: VARIOUS MAINTENANCE OF PORT PHYSICAL FACILITIES</p> <p>PORT OF LOS ANGELES AND LONG BEACH, CALIFORNIA</p>	<p>DESIGN: PREPARED BY</p> <p><i>[Signature]</i> RILEY W. ANDERSON ACTING PROJECT MANAGER</p>	<p>APPROVED BY</p> <p><i>[Signature]</i> CARLOS A. SANCHEZ VICE MANAGER</p>	<p>APPROVED BY</p> <p><i>[Signature]</i> EDWARD M. LUIS MANAGER</p>	<p>DATE: 12/14/10</p> <p>AS NOTED</p> <p>FILE NAME: BROOKS HOME REPAIRS.DWG</p>	<p>REVISIONS: 12/14/10</p> <p>12/14</p> <p>12/14</p>
--	---	---	---	---	---	--



SUMMARY OF BILL OF QUANTITIES
MPP-PLW-03-2022: VARIOUS MAINTENANCE OF PORT PHYSICAL FACILITIES
PORT OF BROOKE'S POINT, BROOKE'S POINT, PALAWAN

NO.	DESCRIPTION OF WORK	UNIT	QTY.	UNIT PRICE (Pesos)	AMOUNT (Pesos)
(1)	(2)	(3)	(4)	(5)	(4) x (5)
BILL NO. I	MAINTENANCE OF TMO BUILDING	LOT	1.00		
BILL NO. II	MAINTENANCE OF PASSENGER TERMINAL BUILDING	LOT	1.00		
BILL NO. III	MAINTENANCE OF CIQS BUILDING	LOT	1.00		
BILL NO. IV	MAINTENANCE OF WELCOME ARCH, GATES AND FENCES	LOT	1.00		
BILL NO. V	MAINTENANCE OF R.C. PIER	LOT	1.00		
BILL NO. VI	MAINTENANCE OF WAREHOUSE BUILDING NO. 1	LOT	1.00		
BILL NO. VII	MAINTENANCE OF WAREHOUSE BUILDING NO. 2	LOT	1.00		
BILL NO. VIII	MAINTENANCE OF PORTLIGHTS	LOT	1.00		
BILL NO. IX	MAINTENANCE OF ACCESS ROAD	LOT	1.00		
BILL NO. X	CLEARING WORKS	LOT	1.00		
TOTAL					

Bidder's Authorized Representative

BILL OF QUANTITIES
MPF-PLW-03-2022: VARIOUS MAINTENANCE OF PORT PHYSICAL FACILITIES
PORT OF BROOKE'S POINT, BROOKE'S POINT, PALAUAN

NO. (1)	DESCRIPTION OF WORK (2)	UNIT (3)	QTY. (4)	UNIT PRICE (Pesos) (5)	AMOUNT (Pesos) (4) x (5)
BILL NO. I	MAINTENANCE OF TMO BUILDING				
1.01	Maintenance of Glass Door	lot	1.00		
1.02	Maintenance of Office Lights	units	4.00		
TOTAL FOR BILL NO. I					

NO. (1)	DESCRIPTION OF WORK (2)	UNIT (3)	QTY. (4)	UNIT PRICE (Pesos) (5)	AMOUNT (Pesos) (4) x (5)
BILL NO. II	MAINTENANCE OF PASSENGER TERMINAL BUILDING				
2.01	Repainting of Eave Ceiling, Parapet and Steel Casement Windows and Repair of Roofing	sqm	278.45		
2.02	Maintenance of Eave Lamps	units	14.00		
2.03	Maintenance of Comfort Rooms and Pressure Tank	lot	1.00		
2.04	Maintenance of Glass Doors	sets	2.00		
TOTAL FOR BILL NO. II					

Bidder's Authorized Representative _____

BILL OF QUANTITIES
MPF-PLW-23-2023: VARIOUS MAINTENANCE OF PORT PHYSICAL FACILITIES
PORT OF BROCKE'S POINT, BROCKE'S POINT, PALAWAN

NO. (1)	DESCRIPTION OF WORK (2)	UNIT (3)	QTY. (4)	UNIT PRICE (Pesos) (5)	AMOUNT (Pesos) (4) x (5)
BILL NO. III	MAINTENANCE OF OIGS BUILDING				
3.01	Maintenance of Fixtures at CR's and Kitchen	lot	1.00		
3.02	Maintenance of Electrical System	lot	1.00		
TOTAL FOR BILL NO. III					

NO. (1)	DESCRIPTION OF WORK (2)	UNIT (3)	QTY. (4)	UNIT PRICE (Pesos) (5)	AMOUNT (Pesos) (4) x (5)
BILL NO. IV	MAINTENANCE OF WELCOME ARCH, GATES AND FENCES				
4.01	Maintenance of Main Entrance Gate (Repair and Repainting)	sqm	34.75		
4.02	Maintenance of Electrical System of Welcome Arch	lot	1.00		
4.03	Maintenance of Concrete Fence (Repainting, Replacement of Banded Wire)	sqm	168.79		
TOTAL FOR BILL NO. IV					

Bidder's Authorized Representative _____

BILL OF QUANTITIES
MPF-PLW-03-2022: VARIOUS MAINTENANCE OF PORT PHYSICAL FACILITIES
PORT OF BROOKER'S POINT, BROOKER'S POINT, PALAWAN

NO. (1)	DESCRIPTION OF WORK (2)	UNIT (3)	QTY. (4)	UNIT PRICE (Pesos) (5)	AMOUNT (Pesos) (4) x (5)
BILL NO. V	MAINTENANCE OF R.C. PIER				
S001	Maintenance of R.C. Curbs	sqm	3.34		
S002	Maintenance of Mooring Bollards	sqm	42.00		
S003	Maintenance of Rubber Dock Fenders	unit	14.00		
TOTAL FOR BILL NO. V					

NO. (1)	DESCRIPTION OF WORK (2)	UNIT (3)	QTY. (4)	UNIT PRICE (Pesos) (5)	AMOUNT (Pesos) (4) x (5)
BILL NO. VI	MAINTENANCE OF WAREHOUSE BUILDING NO. 1				
G001	Repair and Repainting Works (Eave Ceiling, Fascia Board)	sqm	147.01		
TOTAL FOR BILL NO. VI					

 Bidder's Authorized Representative

BILL OF QUANTITIES
MPF-PLW-03-2022: VARIOUS MAINTENANCE OF PORT PHYSICAL FACILITIES
PORT OF BROOKE'S POINT, BROOKE'S POINT, PALAWAN

NO. (1)	DESCRIPTION OF WORK (2)	UNIT (3)	QTY. (4)	UNIT PRICE (Pesos) (5)	AMOUNT (Pesos) (4) x (5)
BILL NO. VII	MAINTENANCE OF WAREHOUSE BUILDING NO. 2				
7.01	Maintenance of Roofing, Gutter and Parapet	sqm	49.80		
7.02	Repainting Works (Roofing & Parapet, Trusses, Furliss, Parapet Frame, Tension Rods)	sqm	1,523.19		
7.03	Maintenance of Electrical System	lot	1.00		
TOTAL FOR BILL NO. VII					

NO. (1)	DESCRIPTION OF WORK (2)	UNIT (3)	QTY. (4)	UNIT PRICE (Pesos) (5)	AMOUNT (Pesos) (4) x (5)
BILL NO. VIII	MAINTENANCE OF PORTLIGHTS				
8.01	Maintenance of Batted Street Lights	UNIT	5.00		
TOTAL FOR BILL NO. VIII					

 Bidder's Authorized Representative

BILL OF QUANTITIES
MPF-PLW-03-2022: VARIOUS MAINTENANCE OF PORT PHYSICAL FACILITIES
PORT OF BROCKE'S POINT, BROCKE'S POINT, PALAWAN

NO. (1)	DESCRIPTION OF WORK (2)	UNIT (3)	QTY. (4)	UNIT PRICE (Pesos) (5)	AMOUNT (Pesos) (4) x (5)
IX	MAINTENANCE OF ACCESS ROAD				
9.01	Deviation of Damaged Pavement and Removal of Unsuitable Materials	sqm	30.67		
9.02	Subgrade and Base Preparation (Supply, Place and Compact)	sqm	58.46		
9.03	Supply and Place Concrete for Pavement including Protection (3,500 @ 34 days)	sqm	9.32		
TOTAL FOR BILL NO. VII					

NO. (1)	DESCRIPTION OF WORK (2)	UNIT (3)	QTY. (4)	UNIT PRICE (Pesos) (5)	AMOUNT (Pesos) (4) x (5)
BILL NO. X	CLEARING WORKS				
10.01	Cleaning & Clearing of Site and Disposal of Debris	lot	1.00		
TOTAL FOR BILL NO. XV					

Bidder's Authorized Representative

BASIS OF PAYMENT FOR WORK ITEMS INCLUDED IN THE PROPOSAL

The work items included in the proposal including the basis of payment for each item are as follows:

The work items included in the proposal including the basis of payment for each item are as follows:

BILL NO. I – MAINTENANCE OF TMO BUILDING

Item 1.01 Maintenance of Glass Door

The quantity to be paid for shall be the whole lot of glass door to be maintained in accordance with the specifications and as shown in the drawings and accepted by the Engineer. Payment shall include the cost of materials, labor, tools and other incidental expenses necessary to complete the work.

Item 1.02 Maintenance of Office Lights

The quantity to be paid for shall be the actual number in units of office lights to be maintained in accordance with the specifications and as shown in the drawings and accepted by the Engineer. Payment shall include the cost of materials, labor, tools and other incidental expenses necessary to complete the work.

BILL NO. II – MAINTENANCE OF PASSENGER TERMINAL BUILDING

Item 2.01 Repainting of Eave Ceiling, Parapet and Steel Casement Windows and Repair of Roofing

The quantity to be paid for shall be the actual area in square meters of eave ceiling, parapet and steel casement windows to be repainted and of roofing to be repaired in accordance with the specifications and as shown in the drawings and accepted by the Engineer. Payment shall include the cost of materials, labor, tools and other incidental expenses necessary to complete the work.

Item 2.02 Maintenance of Eave Lamps

The quantity to be paid for shall be the actual number in units of eaves lamps to be maintained in accordance with the specifications and as shown in the drawings and accepted by the Engineer. Payment shall include the cost of materials, labor, tools and other incidental expenses necessary to complete the work.

Item 2.03 Maintenance of Comfort Rooms and Pressure Tank

The quantity to be paid for shall be the whole lot of comfort rooms and pressure tank to be maintained in accordance with the specifications and as shown in the drawings and accepted by the Engineer. Payment shall include the cost of materials, labor, tools and other incidental expenses necessary to complete the work.

Item 2.04 Maintenance of Glass Doors

The quantity to be paid for shall be the actual number in sets of glass doors to be maintained in accordance with the specifications and as shown in the drawings and accepted by the Engineer. Payment shall include the cost of materials, labor, tools and other incidental expenses necessary to complete the work.

BILL NO. III – MAINTENANCE OF CIQS BUILDING

Item 3.01 Maintenance of Fixtures at CR's and Kitchen

The quantity to be paid for shall be the whole lot of fixtures to be maintained at CR's and kitchen in accordance with the specifications and as shown in the drawings and accepted by the Engineer. Payment shall include the cost of materials, labor, tools and other incidental expenses necessary to complete the work.

Item 3.02 Maintenance of Electrical System

The quantity to be paid for shall be the whole lot of electrical system to be maintained in accordance with the specifications and as shown in the drawings and accepted by the Engineer. Payment shall include the cost of materials, labor, tools and other incidental expenses necessary to complete the work.

BILL NO. IV – MAINTENANCE OF WELCOME ARCH, GATES AND FENCES

Item 4.01 Maintenance of Main Entrance Gate (Repair and Repainting)

The quantity to be paid for shall be the actual area in square meters of Main Entrance

Gate (Repair and Repainting) to be maintained in accordance with the specifications and as shown in the drawings and accepted by the Engineer. Payment shall include the cost of materials, labor, tools and other incidental expenses necessary to complete the work.

Item 4.02 Maintenance of Electrical System of Welcome Arch

The quantity to be paid for shall be the whole lot of electrical system of Welcome Arch to be maintained in accordance with the specifications and as shown in the drawings and accepted by the Engineer. Payment shall include the cost of materials, labor, tools and other incidental expenses necessary to complete the work.

Item 4.03 Repainting of Concrete Fence (Repainting, Replacement of Barbed Wire)

The quantity to be paid for shall be the actual area in square meters of concrete fence (repainting, replacement of barbed wire) to be repainted in accordance with the specifications and as shown in the drawings and accepted by the Engineer. Payment shall include the cost of materials, labor, tools and other incidental expenses necessary to complete the work.

BILL NO. V – MAINTENANCE OF R.C. PIER

Item 5.01 Maintenance of R.C. Curbs

The quantity to be paid for shall be the actual volume in cubic meters of R.C. curbs to be maintained in accordance with the specifications and as shown in the drawings and accepted by the Engineer. Payment shall include the cost of materials, labor, tools and other incidental expenses necessary to complete the work.

Item 5.02 Repainting of Bollards

The quantity to be paid for shall be the actual area in square meters of bollards to be repainted in accordance with the specifications and as shown in the drawings and accepted by the Engineer. Payment shall include the cost of materials, labor, tools and other incidental expenses necessary to complete the work.

Item 5.03 Maintenance of Rubber Dock Fenders

The quantity to be paid for shall be the actual number in pieces of rubber dock fenders to be maintained in accordance with the specifications and as shown in the drawings and accepted by the Engineer. Payment shall include the cost of materials, labor, tools and other incidental expenses necessary to complete the work.

BILL NO. VI – MAINTENANCE OF WAREHOUSE BUILDING NO. 1

Item 6.01 Repair and Repainting Works (Eave Ceiling, Fascia Board)

The quantity to be paid for shall be the actual area in square meters of repair and repainting works (Eave Ceiling, Fascia Board) to be done in accordance with the specifications and as shown in the drawings and accepted by the Engineer. Payment shall include the cost of materials, labor, tools and other incidental expenses necessary to complete the work.

BILL NO. VII – MAINTENANCE OF WAREHOUSE BUILDING NO. 2

Item 7.01 Maintenance of Roofing, Gutter and Parapet

The quantity to be paid for shall be the actual area in square meters of roofing, gutter and parapet to be maintained in accordance with the specifications and as shown in the drawings and accepted by the Engineer. Payment shall include the cost of materials, labor, tools and other incidental expenses necessary to complete the work.

Item 7.02 Repainting Works (Roofing & Parapet, Trusses, Purlins, Parapet Frame, Tension Rods)

The quantity to be paid for shall be the actual area in square meters of repainting works (Roofing & Parapet, Trusses, Purlins, Parapet Frame, Tension Rods) to be done in accordance with the specifications and as shown in the drawings and accepted by the Engineer. Payment shall include the cost of materials, labor, tools and other incidental expenses necessary to complete the work.

Item 7.03 Maintenance of Electrical System

The quantity to be paid for shall be the whole lot of electrical system to be maintained in accordance with the specifications and as shown in the drawings and accepted by the Engineer. Payment shall include the cost of materials, labor, tools and other incidental expenses necessary to complete the work.

BILL NO. VIII – MAINTENANCE OF PORTLIGHTS

Item 8.01 Maintenance of Busted Street Lights

The quantity to be paid for shall be the actual number in units of busted street lights to be maintained in accordance with the specifications and as shown in the drawings and accepted by the Engineer. Payment shall include the cost of materials, labor, tools and other incidental expenses necessary to complete the work.

BILL NO. IX – MAINTENANCE OF ACCESS ROAD

Item 9.01 Demolition of Damaged Pavement and Removal of Unsuitable Materials

The quantity to be paid for shall be the actual volume in cubic meters of damaged pavement to be demolished and unsuitable materials to be removed in accordance with the specifications and as shown in the drawings and accepted by the Engineer. Payment shall include the cost of materials, labor, tools and other incidental expenses necessary to complete the work.

Item 9.02 Subgrade and Base Preparation (Supply, Place and Compact)

The quantity to be paid for shall be the actual area in square meters of subgrade and base (Supply, Place and Compact) to be prepared in accordance with the specifications and as shown in the drawings and accepted by the Engineer. Payment shall include the cost of materials, labor, tools and other incidental expenses necessary to complete the work.

**Item 8.03 Supply and Place Concrete for Pavement including Protection
(3,500 @ 14 days)**

The quantity to be paid for shall be the actual volume in cubic meters of concrete to be supplied and placed for pavement including protection in accordance with the specifications and as shown in the drawings and accepted by the Engineer. Payment shall include the cost of materials, labor, tools and other incidental expenses necessary to complete the work.

BILL NO. X – CLEARING WORKS

Item 10.01 Cleaning & Clearing of Site and Disposal of Debris

The quantity to be paid for shall be the whole lot of cleaning and clearing works to be done at the site and of debris to be disposed in accordance with the specifications and as shown in the drawings and accepted by the Engineer. Payment shall include the cost of materials, labor, tools and other incidental expenses necessary to complete the work.

Updated May 23, 2022

MAY 15 2020

ENGINEERING CIRCULAR NO. 45 2020

FOR THE MANAGER, PCMD
ALL PORT MANAGERS
CONCERNED CONTRACTORS

FROM THE ASSISTANT GENERAL MANAGER,
ENGINEERING OFFICE

SUBJECT SAFETY GUIDELINES FOR THE IMPLEMENTATION OF
ALL PPA (CAPEX & RM) AND DOTr TOURISM AND
SOCIAL REFORM PROJECTS DURING THE COVID-19
PUBLIC HEALTH CRISIS



Pursuant to the Proclamation No. 929, series of 2020 issued by President Rodrigo Roa Duterte, declaring a State of Calamity throughout the Philippines due to the Coronavirus Disease 2019 (COVID-19) and in view of the extended implementation of Enhanced Community Quarantine (ECQ) and General Community Quarantine (GCQ) in the identified areas, the following guidelines, in addition to the existing safety standards approved by the DOLE and also to the PPA Memorandum Circular No. 18-2020, are hereby directed to be implemented in all on-going PPA infrastructure projects including the DOTr Tourism and Social Reform projects:

1. Only persons from Twenty-One (21) to Fifty-Nine (59) years of age, without pre-existing health conditions, such as, but not limited to, immunodeficiency, comorbidities or other health risk and who did not come in contact with someone with COVID-19 shall be allowed to be included in the workforce for areas under ECQ and GCQ.
2. The Contractor shall provide for their personnel/workers the necessary welfare facilities and amenities, such as employees' quarters for board and lodging for the project area covered by the ECQ and GCQ, otherwise, prior to deployment, prescribed procedures shall be conducted at every instance of re-entry.
3. Adequate food, potable drinking water, disinfectants shall be made available by the Contractors for their in-house personnel/worker during the period of ECQ/GCQ.
4. Compliance to social distancing, proper hygiene and mandatory wearing of face masks and other protective personal equipment shall be ensured for all on-going projects as precautionary measures to avoid and contain the spread of COVID-19 in the work place.

A. Bontalan, Sr. Engr. (Civil) / Engr. (Mech.) / Engr. (Elec.) / Engr. (Struct.)
Engr. (Civil) / Engr. (Mech.) / Engr. (Elec.) / Engr. (Struct.)
Engr. (Civil) / Engr. (Mech.) / Engr. (Elec.) / Engr. (Struct.)
Engr. (Civil) / Engr. (Mech.) / Engr. (Elec.) / Engr. (Struct.)

PCMD 20200221/8020

5. Field Offices, employees' quarters, bulkhouses and other common areas shall be maintained to ensure cleanliness and daily disinfection of said areas must be conducted accordingly.
6. Contractors shall provide disinfection facilities such as handwashing station, foot bath and others to be placed at various locations of all on-going projects.
7. Contractors shall ensure that their projects are in compliance with the DOLE D.O. No. 13 series of 1998. Personnel and workers shall be provided with the supply of vitamins particularly Vitamin C and other over the counter medicines, quarantine facilities and oxygen tanks for emergency purposes.
8. Safety Officer of the Contractor shall regularly conduct briefing on the information regarding COVID-19 construction protocols on top of other safety requirements.
9. As preventive measure, daily monitoring of the pre and post work health conditions of workers shall be undertaken by the Contractor's health/safety officer particularly the temperature, blood pressure and exposure monitoring. Personnel with symptoms relative to COVID-19 shall be immediately isolated and quarantined for fourteen (14) days and if necessary, brought to the DOH COVID-19 treatment facility under strict confidentiality/privacy.
10. Daily health monitoring report shall be prepared by the Safety Officer and to be submitted to the assigned PPA Project Engineer/Port Engineer.
11. Proper protocols in accordance with the DTI and DOLE Interim Guidelines and the Local Government Unit policy on work place prevention and control of COVID-19 shall likewise be strictly observed.
12. Daily work activities shall be under strict monitoring by the Safety Officer to ensure compliance with safety standards and quarantine protocols.
13. Sharing of construction and office equipment is discouraged. However, if it cannot be avoided, disinfection of equipment in between transfer shall be conducted.
14. All materials and equipment brought inside the project site shall be disinfected, as much as possible.
15. Non-essential personnel, visitors and general public shall be restricted to enter the project site. All personnel entering the construction site premises on a temporary bases (e.g. Delivery truck drivers, inspectors, etc) shall be properly logged and checked for symptoms. Gatherings, fequors, and/or merry-making are strictly prohibited in the project site.

8

16. PPA Permit/Incident Engineer shall ensure strict compliance to DOLE D.O. No. 13, series of 1996 and implementation of the mentioned COVID-19 precautionary measures in the work place.
17. Clustered and staggered deployment of employees within the construction site shall be observed to minimize personnel contact.
18. Contractors shall submit to the implementing unit the inventory of work activities including the proposed sequencing of activities to be followed and undertaken to comply to the required social distancing. Break times shall be conducted in a staggered manner.

For strict compliance:


CONSTANTE D. FARINAS, JR.

***Section IX. Checklist of Technical and
Financial Documents***

Checklist of Technical and Financial Documents

I. TECHNICAL COMPONENT ENVELOPE

Class "A" Documents

Legal Documents

- ☐ (a) Valid PhilGEPS Registration Certificate (Platinum Membership) (all pages) in accordance with Section 5.5.2 of the IRR.

Technical Documents

- ☐ (b) Statement of the prospective bidder of all its ongoing government and private contracts, including contracts awarded but not yet started, if any, whether similar or not similar in nature and complexity to the contract to be bid; and
- ☐ (c) Statement of the bidder's Single Largest Completed Contract (SLCC) similar to the contract to be bid, except under conditions provided under the rules; and
- ☐ (d) Special PCAB License in case of Joint Ventures; and registration for the type and cost of the contract to be bid; and
- ☐ (e) Original copy of Bid Security, if in the form of a Surety Bond, submit also a certification issued by the Insurance Commission; or
Original copy of Notarized Bid Securing Declaration; and
- ☐ (f) Project Requirements, which shall include the following:
 - ☐ a. Organizational chart for the contract to be bid;
 - ☐ b. List of contractor's key personnel (e.g., Project Manager, Project Engineers, Materials Engineers, and Foremen), to be assigned to the contract to be bid, with their complete qualification and experience data;
 - ☐ c. List of contractor's major equipment units, which are owned, leased, and/or under purchase agreements, supported by proof of ownership or certification of availability of equipment from the equipment lessor/vendor for the duration of the project, as the case may be; and
- ☐ (g) Original duly signed Omnibus Sworn Statement (OSS); and if applicable, Original Notarized Secretary's Certificate in case of a corporation, partnership, or cooperative; or Original Special Power of Attorney of all members of the joint venture giving full power and authority to its officer to sign the OSS and do acts to represent the Bidder.

Financial Documents

- ☐ (h) The prospective bidder's computation of Net Financial Contracting Capacity (NFCC).

Class "B" Documents

- ☐ (i) If applicable, duly signed joint venture agreement (JVA) in accordance with RA No. 4566 and its IRR in case the joint venture is already in existence; or
duly notarized statements from all the potential joint venture partners stating that they will enter into and abide by the provisions of the JVA in the instance that the bid is successful.

II. FINANCIAL COMPONENT ENVELOPE

- ☐ (j) Original of duly signed and accomplished Financial Bid Form; and

Other documentary requirements under RA No. 9184

- ☐ (k) Original of duly signed Bid Prices in the Bill of Materials; and
- ☐ (l) Duly accomplished Detailed Estimates Form, including a summary sheet indicating the unit prices of construction materials, labor rates, and equipment rentals used in coming up with the Bid; and
- ☐ (m) Cash Flow by Quarter.

Bid Form for the Procurement of Infrastructure Projects
(shall be submitted with the Bid)

BID FORM

Date _____
Project Identification No. _____

To: Philippine Ports Authority PMO Palawan
Port Area, Bgy. Bagong Pag-asa,
Puerto Princesa City, Palawan

Having examined the Philippine Bidding Documents (PBDs) including the Supplemental or Bid Bulletin Numbers _____, the receipt of which is hereby duly acknowledged, we, the undersigned, declare that:

- a. We have no reservation to the PBDs, including the Supplemental or Bid Bulletins, for the Procurement Project [insert name of contract];
- b. We offer to execute the Works for this Contract in accordance with the PBDs;
- c. The total price of our Bid in words and figures, excluding any discounts offered below is: _____
- d. The discounts offered and the methodology for their application are: _____
- e. The total bid price includes the cost of all taxes, such as, but not limited to: (specify the applicable taxes, e.g. (i) value added tax (VAT), (ii) income tax, (iii) local taxes, and (iv) other fiscal levies and duties), which are itemized herein and reflected in the detailed estimates.
- f. Our Bid shall be valid within the a period stated in the PBDs, and it shall remain binding upon us at any time before the expiration of that period;
- g. If our Bid is accepted, we commit to obtain a Performance Security in the amount of _____ percent of the Contract Price for the due performance of the Contract, or a Performance Securing Declaration in lieu of the the allowable forms of Performance Security, subject to the terms and conditions of issued GPPB guidelines¹ for this purpose.
- h. We are not participating, as Bidders, in more than one Bid in this bidding process, other than alternative offers in accordance with the Bidding Documents;
- i. We understand that this Bid, together with your written acceptance thereof included in your notification of award, shall constitute a binding contract between us, until a formal Contract is prepared and executed; and
- j. We understand that you are not bound to accept the Lowest Calculated Bid or any other Bid that you may receive.
- k. We likewise certify/confirm that the undersigned, is the duly authorized representative of the bidder, and granted full power and authority to do, execute and perform any and all acts necessary to participate, submit the bid, and to sign and execute the ensuing contract for the [Name of Project] of the [Name of the

¹ currently based on GPPB Resolute No. 19-2011

Procuring Entity).

- I. We acknowledge that failure to sign each and every page of this Bid Form, including the Bill of Quantities, shall be a ground for the rejection of our bid.

Name: _____

Legal Capacity: _____

Signature: _____

Duly authorized to sign the Bid for and behalf of: _____

Date: _____

**STATEMENT OF ALL ON-GOING GOVERNMENT AND PRIVATE CONTRACTS
INCLUDING CONTRACTS AWARDED BUT NOT YET STARTED, WHETHER SIMILAR OR NOT SIMILAR IN NATURE**

Name of the Contract or Title of the Project 4) [1]	Owner's Name, Address, and Telephone No.	Nature/Scope of Work 3) [2]	Contractor's Role (in percentage) 1) [4]	Total Contract Value in Award			Date of Award [5]	Value of Outstanding Works	Estimated Time of Completion	As of		Contract Duration	
				Award	Project Completion	Escalated Value to Present Prices				N of Accomplishment 6)			
										Planned	Actual	Start	Completed
a) Government Contracts/Projects i. On-going ii. Awarded but not yet started													
b) Private Contracts/Projects i. On-going ii. Awarded but not yet started													

Note:

- As sponsoring or defined in the contract entered/awarded by the parties
- With special reference to the Scope of Work as described/referred in the advertised invitation to bid
- Indicate whether as Sole Contractor, Sub-Contractor or Member in a Joint Venture/ Consortium
- Indicate the FIDIC used if Contract Value is expressed in a currency other than the Philippine peso. Specify the "Escalation Factor" used to escalate the Contract Value from Completion date to the advertisement date of the Invitation to Bid per section 28.12.2(1) of R.A. 5184.
- State month and Year.

This statement shall be supported by:

- Notice of Award and/or Contract
- Letter to Proceed

Name of Firm/Applicant

Authorized Signing Official

Date

STATEMENT OF SINGLE LARGEST COMPLETED CONTRACT (SLCC) SIMILAR TO THE CONTRACT TO BE BID

Name of the Contract or Title of the Project a) (1)	Owner's Name, Address, and Telephone Number (2)	Nature/Scope of Work (3)	Contractor's Role (In percentage) (4)	Total Contract Value (In Pesos)		Date of Award or (5)	Contract Duration	
				at Project Completion (6)	at Adjusted Value to Present Prices a) (6)		Start (8)	Completed (9)

Note:

- The prospective bidder must have completed an SLCC that is similar to the contract to be bid, and whose value, adjusted to current prices using the PAB consumer price index, must be at least P10 (10%) of the ABC to be bid.
- The Statement shall be supported by:
 - Notice of Award and / or Notice to Proceed
 - Project Owner's Certificate of Final acceptance issued by the owner other than the Contractor or Constructor's Performance Evaluation System (CPES) Final Rating, which must be at least satisfactory.
 - Receiptation of Bill of Materials.

Name of Firm/Applicant

Authorized Signing Official

Date

EXPERIENCE RECORD ON SIMILARLY COMPLETED PROJECT

Name of Contract to be Bid : Various Maintenance of Port Physical Facilities, Port of Brooke's Point, Brooke's Point, Palawan

Name of Single Largest Completed Contract with the same Major Categories : _____
of Works as the Contract to be Bid (To be filled-up by Prospective Bidder)

Similar Major Categories of Work [1]	Unit of Measure [3]	Quantity [4]	Title of the Project	Unit of Measure	Quantity
1. CARPENTRY WORKS	SQM	25.40			
2. PAINTING WORKS	SQM	1,107.40			
3. CONCRETE WORKS	CUM	6.33			
4. DEMOLITION WORKS	CUM	10.34			
5. BASE PREPARATION	SQM	28.23			
6. PORTLIGHT	UNITS	3.00			

Note : 1) Submit the Certificate of Completion/Certificate of Acceptance by the project owner, Final Recapitulation/Bill of Quantities and/or Constructor Performance Evaluation System (CPES) ratings, 1st, 2nd & Final visit (if applicable). Projects with no Certificate of Completion and Recapitulation/Bill of Quantities shall not be considered.

2) The Owner's Certificate of Final Acceptance; or the Constructors Performance Evaluation Summary (CPES) Final Rating and/or the Certificate of Completion, must be satisfactory.

Name of Firm/Applicant

Authorized Signing Official

Date

FINANCIAL DATA AND REQUIREMENTS

- A. The prospective bidder's audited Financial Statements, showing, among others, the prospective bidder's total and current assets and liabilities, stamped "RECEIVED" by Bureau of Internal Revenue (BIR), or its duly accredited and authorized institutions, for the preceding calendar year which should not be earlier than two (2) years from the date of bid submission.

	[1]	[2]
		Year :
1.	Total Assets	
2.	Current Assets	
3.	Total Liabilities	
4.	Current Liabilities	
5.	Net Worth (1-3)	
6.	Net Working Capital (2-4)	

- B. The computation of the bidders Net Financial Contracting Capacity (NFCC) must be at least equal to the approved budget for the contract to be bid, computed based on the above data, using the following formula:

NFCC = [(current assets - current liabilities) (15)] minus the value of all outstanding or uncompleted portions of the project under ongoing contracts, including awarded contracts yet to be started, coinciding with the contract to be bid

NFCC = _____

Attached herewith are certified true copies of the audited financial statements stamped received by the BIR or BIR authorized collecting agent for the latest/immediately preceding calendar year.

Name of Prospective Bidder-Firm

Signature over Printed Name of Authorized Signing Official

Designation

Date: _____

NOTE: If prospective bidder is a Partnership or Joint Venture, each member-firm of the Joint Venture shall submit separate financial statements.

KEY PERSONNEL TO BE ASSIGNED TO THE CONTRACT TO BE BID

Following are the key personnel that I will assign to the project if awarded the contract. Attached are their qualification and experience data and certified true copies of their PRC IDs, certificates of accreditation, etc.

Name of Contract to be Bid: _____

	Project Manager (1)	Project Engineer (2)	Materials Engineer (3)	Foreman (4)	Construction Safety and Health Officer (5)
1. NAME					
2. ADDRESS					
3. DATE OF BIRTH					
4. CITIZENSHIP					
5. CNYL STATUS					
6. EDUCATION					
ELEMENTARY Name and Location of School Year Graduated					
HIGH SCHOOL Name and Location of School Year Graduated					
COLLEGE Name and Location of School Year Graduated					
7. PRC LICENSE No.					
8. TIN (Tax Identification No.)					
9. SSN No.					

Name of Prospective Bidder-Firm

Signature over Printed Name of Authorized Signing Official

Date

Designation

NOTE : Attach complete qualification and experience data of all key personnel including certified copies of their valid CPDWH certificate of accreditation for Materials Engineer, PRC ID's for the Project Engineer and Certificate of Training for the Construction Safety and Health Officer issued by the OSHC Accredited Training. Failure to attach the said documents is ground for disqualification.

BIODATA OF (Position of Key Personnel)

[Give detailed information of the Key Personnel who are assigned as full-time Project Manager, Project Engineer, Materials Engineer and Foreman for the project to be bid. Each Key Personnel must fill-up this form.]

1. Name : _____
2. Date of Birth : _____
3. Nationality : _____
4. Education and Degrees : _____
5. Specialty : _____
6. Registration : _____
7. Length of Service with the Firm : _____ Years, from _____ (month) _____ (year)
to _____ (month) _____ (year)
8. Total Years of Experience including previous employment : _____
9. If item 7 is less than ten (10) years, give name and length of service with previous employers for a ten (10)-year period (attached additional sheets if necessary) :

Name and Address of Employer

Length of Service

_____	_____ year(s), from _____	to _____
_____	_____ year(s), from _____	to _____
_____	_____ year(s), from _____	to _____
_____	_____ year(s), from _____	to _____
_____	_____ year(s), from _____	to _____
_____	_____ year(s), from _____	to _____
_____	_____ year(s), from _____	to _____

10. Experience: (see next page)

BIO DATA OF _____ (Continuation)

10. Experience: (This should cover the past ten (10) years of experience. Attached as many pages as necessary to show involvement of personnel in the projects using the format below.)

Name of Company/Firm	Name and Address of Owner of Company/Firm	Indicate the features of project (particulars of the project components and any other particular interest connected with the project)	Contract Awarded (in Philippine Currency)	Position	Structures for which the employee/personnel was responsible	Assignment Period	
						From	To

(Name and Signature of Employee/Personnel)

It is hereby certified that the above personnel can be assigned to this project, if the contract is awarded to our company

(Place and Date)

(Signature Over Printed Name of Authorized Signatory of the Bidder-Firm)

Designation

EQUIPMENT PLEDGED TO THE CONTRACT TO BE BID

I hereby declare that the following equipment listed below which are owned, leased or under purchase agreement are in good operating condition and are available for the duration of the project.

Name of Contract to be Bid: _____

DESCRIPTION (Type, Model, Make)	No. of Each	YEAR OF MANUFACTURE	OWNED/LEASED/ UNDER PURCHASE AGREEMENT a)	CAPACITY PERFORMANCE	MOTOR NO./ BODY NO.	CONDITION	PRESENT LOCATION
[1]	[2]	[3]	[4]	[5]	[6]	[7]	[8]

(If space is not enough, reproduce on extra sheet.)

Name of Bidder-Firm

(Signature Over Printed Name of Authorized Signatory of the Bidder-Firm)

Date

Designation

NOTE:

1. Attached notarized Certificate of Availability of Equipments Units from:
 - a) Bidder - for equipment units owned by the bidder;
 - b) Lessor - for equipment units under lease;
 - c) Vendor - for equipment units under purchase agreement.

Failure to attach the aforementioned notarized certificate(s) is ground for disqualification of the bidder's bid.

(For equipment units owned by the Bidder)

CERTIFICATION OF AVAILABILITY OF EQUIPMENT

This is to certify that I have the following owned equipment units which shall be used exclusively for the duration of the project _____ (name of contract to be bid) _____

if awarded the contract, to wit:

<u>No. of Units</u>	<u>Name/Description of Equipment</u>	<u>Performance Capacity</u>
---------------------	--------------------------------------	-----------------------------

IN WITNESS WHEREOF, I have hereunto set my hand this _____ of _____
2022 at _____, Philippines.

(Signature over printed name of Bidder)

(Position/Designation in the Company)

(Name of Company of Bidder)

Affiant

ACKNOWLEDGEMENT

SUBSCRIBED AND SWORN to before me this _____ day of _____, 20____
affiant exhibiting to me his/her Community Tax Certificate No. _____ issued
on _____ at _____, Philippines.

Doc. No. _____

Page No. _____

Book No. _____

Series of _____

NOTARY PUBLIC

(For equipment units under Lease)

CERTIFICATION OF AVAILABILITY OF EQUIPMENT

This is to certify that I have the following owned equipment units which are available for lease to _____
(name of bidder)
and which shall be exclusively used for the duration of the project _____ (name of)
contract to be bid) _____, to wit:

<u>No. of Units</u>	<u>Name/Description of Equipment</u>	<u>Performance Capacity</u>	<u>Rental/Day</u>
---------------------	--------------------------------------	-----------------------------	-------------------

The undersigned shall execute with _____ (name of bidder)
the corresponding contract of lease for the above-mentioned equipment upon award of
the contract to the latter.

IN WITNESS WHEREOF, I have hereunto set my hand this _____ day of _____
2022 at _____, Philippines.

(Signature over printed name of Lessor)
(Position/Designation in the Company)
(Name of Lessor's)
Affiant

CONFORME:

(Signature over printed name of Bidder)
(Position/Designation in the Company)
(Name of Bidder's Co.)

ACKNOWLEDGEMENT

SUBSCRIBED AND SWORN to before me this _____ day of _____, 20____ affiant
exhibiting to me his/her Community Tax Certificate No. _____ issued on
_____ at _____, Philippines.

Doc. No. _____
Page No. _____
Book No. _____
Series of _____

NOTARY PUBLIC

(For equipment units under Purchase Agreement)

CERTIFICATION OF AVAILABILITY OF EQUIPMENT

This is to certify that I have the following owned equipment units which are available for sale to purchase by _____ (name of bidder) and which shall be exclusively used for the duration of the project _____ (name of _____ contract to be bid) _____, to wit:

<u>No. of Units</u>	<u>Name/Description of Equipment</u>	<u>Performance Capacity</u>	<u>Amount</u>
---------------------	--------------------------------------	-----------------------------	---------------

The undersigned shall execute with _____ (name of bidder) the corresponding purchase agreement/deed of sale for the above-mentioned equipment upon award of the contract to the latter.

IN WITNESS WHEREOF, I have hereunto set my hand this _____ day _____ 2021 at _____, Philippines.

(Signature over printed name of Vendor)

(Position/Designation in the Company)

(Name of Vendor)

Affiant

CONFORME:

(Signature over printed name of Bidder)

(Position/Designation in the Company)

(Name of Bidder)

ACKNOWLEDGEMENT

SUBSCRIBED AND SWORN to before me this _____ day of _____, 20____, affiant exhibiting to me his/her Community Tax Certificate No. _____ issued on _____ at _____, Philippines.

Doc. No. _____
Page No. _____
Book No. _____
Series of _____

NOTARY PUBLIC

CONTRACT OF LEASE OF EQUIPMENT

KNOW ALL MEN BY THESE PRESENTS:

This contract made and entered into this _____ in _____ by and between:

_____, a company duly organized and existing under and
by the virtue of Laws of the Republic of the Philippines, with Postal address at
_____, represented in this Act by its President /
General Manager, _____ hereinafter referred to as
the LESSOR.

- AND -

_____ a company duly organized and existing under and by the virtue of Laws of the Republic of the Philippines, with Postal address at _____ represented in this Act by its President / General Manager, _____ hereinafter referred to as the LESSOR.

WITNESSETH

Whereas, the Lessor represents that it is the Owner/Legal possessor of below described construction equipment hereinafter referred to as the EQUIPMENT.

Whereas, the LESSEE being engaged in the construction activities, is in need of the EQUIPMENT and has satisfied himself that the same is suitable for the proposed project.

Whereas, on offer and acceptance made by one to the other, the parties hereby agree to execute the Contract of Lease of Equipment, under the terms and conditions set forth:

Whereas, the Contract of Lease of Equipment shall be executed after the award of the above-mentioned project to the LESSEE and the contract shall be in effect until such time that the contractor is authorized by the Philippine Ports Authority to pull out the said equipment.

Now, therefore, for and in consideration of the foregoing premises, the LESSOR hereby leases and the LESSEE accepts the lease of the following EQUIPMENT, to wit:

[illegible]

TERMS AND CONDITIONS:

1. In case wherein the equipment is utilized below two (2) hours (or days), a minimum of one (1) hour (or day) per day shall be charged to the LESSEE.
2. Lease contract shall commence when the equipment leaves the LESSOR'S yard and shall terminate upon the return of the equipment by the LESSEE to the LESSOR'S yard.
3. LESSEE shall pick-up the equipment and its operators at LESSOR'S yard. Upon termination of works, the lessee shall demobilize all units within one week. LESSEE shall

pay for each unit an equivalent of one (1) hour (or day) rental for every day of delayed demobilization.

4. Fuel, oil and lubricants to be supplied by the LESSEE but for the account of the LESSOR.
5. The equipment and accessories contracted shall be under the supervision and responsibility for the safekeeping and scope of work of the equipment and accessories or as required by the LESSOR.
6. Equipment operator(s), mechanics and servicemen shall be provided by and for the account of the LESSOR.
7. MOBILIZATION, provided for LESSEE'S account, per equipment hour (or day) basis.
8. DEMOBILIZATION, for LESSEE'S account, per equipment hour (or day) basis.

IN WITNESS THEREFORE, both parties agreed and hereto have subscribed their names:

LESSOR:

LESSEE:

by _____

by _____

WITNESSED BY:

REPUBLIC OF THE PHILIPPINES)
CITY/MUNICIPALITY OF _____) S. S.

ACKNOWLEDGEMENT

BEFORE ME, A NOTARY PUBLIC, personally appeared the following persons:

	NAME	RES. CERT. #	DATE	PLACE
1.	_____ (Lessor)	_____	_____	_____
2.	_____ (Lessee)	_____	_____	_____

are known to me to be the same persons who executed and signed the foregoing CONTRACT OF LEASE OF EQUIPMENT, acknowledged to me that the same are their true and voluntary act and deed of the company they each represent.

WITNESS MY HAND AND NOTARIAL SEAL on this _____ at _____, Philippines.

Doc. No. _____
Page No. _____
Book No. _____
Series of _____

NOTARY PUBLIC

REPUBLIC OF THE PHILIPPINES }
CITY/MUNICIPALITY OF _____ }

AFFIDAVIT OF SITE INSPECTION

I, _____ of legal age, Filipino, married, and residing at _____
after having been duly sworn to in accordance with law, hereby depose and
say:

1. That I am the _____ of _____
with principal address at _____
2. That I have inspected the project site for the _____
on _____
3. That I have fully determined the geographical and physical conditions of
the project site and its environ, including the socio-political and peace
and order condition of the barangay, municipality and province where
the project is located;
4. That I am fully aware of the laws and ordinances pertaining to project
implementation in the barangay, municipality and province where the
project is located, as well as the rules and regulations of other
government agencies concerning project implementation in the area
where the project is located;
5. That I am executing this affidavit to attest to the truth of the foregoing
facts and as part of the post-qualification documentary requirements for
the aforementioned project.

IN WITNESS WHEREOF, I have hereunto set my hand this _____ day of

(Affiant's signature over printed name)

SUBSCRIBED AND SWORN TO before me this _____, affiant
exhibiting to me his/her Community Tax Certificate No. _____ issued
on _____ at _____, Philippines.

Doc. No. _____

Page No. _____

Book No. _____

Series of 2022

Omnibus Sworn Statement (Revised)

(shall be submitted with the Bid)

REPUBLIC OF THE PHILIPPINES)
CITY/MUNICIPALITY OF _____) S.S.

AFFIDAVIT

I, [Name of Affiant], of legal age, [Civil Status], [Nationality], and residing at [Address of Affiant], after having been duly sworn in accordance with law, do hereby depose and state that:

1. [Select one, delete the other:]

[If a sole proprietorship:] I am the sole proprietor or authorized representative of [Name of Bidder] with office address at [address of Bidder].

[If a partnership, corporation, cooperative, or joint venture:] I am the duly authorized and designated representative of [Name of Bidder] with office address at [address of Bidder].

2. [Select one, delete the other:]

[If a sole proprietorship:] As the owner and sole proprietor, or authorized representative of [Name of Bidder], I have full power and authority to do, execute and perform any and all acts necessary to participate, submit the bid, and to sign and execute the ensuing contract for [Name of the Project] of the [Name of the Procuring Entity], as shown in the attached duly notarized Special Power of Attorney.

[If a partnership, corporation, cooperative, or joint venture:] I am granted full power and authority to do, execute and perform any and all acts necessary to participate, submit the bid, and to sign and execute the ensuing contract for [Name of the Project] of the [Name of the Procuring Entity], as shown in the attached [state title of attached document showing proof of authorization (e.g., duly notarized Secretary's Certificate, Board/Partnership Resolution, or Special Power of Attorney, whichever is applicable);].

3. [Name of Bidder] is not "blacklisted" or barred from bidding by the Government of the Philippines or any of its agencies, offices, corporations, or Local Government Units, foreign government/foreign or international financing institution whose blacklisting rules have been recognized by the Government Procurement Policy Board, by itself or by relation, membership, association, affiliation, or controlling interest with another blacklisted person or entity as defined and provided for in the Uniform Guidelines on Blacklisting;

4. Each of the documents submitted in satisfaction of the bidding requirements is an authentic copy of the original, complete, and all statements and information provided therein are true and correct;

5. [Name of Bidder] is authorizing the Head of the Procuring Entity or its duly authorized representative(s) to verify all the documents submitted;

6. [Select one, delete the rest:]

[If a sole proprietorship:] The owner or sole proprietor is not related to the Head of the Procuring Entity, members of the Bids and Awards Committee (BAC), the Technical Working Group, and the BAC Secretariat, the head of the Project Management Office or the end-user unit, and the project consultants by consanguinity or affinity up to the third civil degree;

[If a partnership or cooperative:] None of the officers and members of [Name of Bidder] is related to the Head of the Procuring Entity, members of the Bids and Awards Committee (BAC), the Technical Working Group, and the BAC Secretariat, the head of the Project Management Office or the end-user unit, and the project consultants by consanguinity or affinity up to the third civil degree;

[If a corporation or joint venture:] None of the officers, directors, and controlling stockholders of [Name of Bidder] is related to the Head of the Procuring Entity, members of the Bids and Awards Committee (BAC), the Technical Working Group, and the BAC Secretariat, the head of the Project Management Office or the end-user unit, and the project consultants by consanguinity or affinity up to the third civil degree;

7. [Name of Bidder] complies with existing labor laws and standards; and

8. [Name of Bidder] is aware of and has undertaken the responsibilities as a Bidder in compliance with the Philippine Bidding Documents, which includes:

- a. Carefully examining all of the Bidding Documents;
- b. Acknowledging all conditions, local or otherwise, affecting the implementation of the Contract;
- c. Making an estimate of the facilities available and needed for the contract to be bid, if any; and
- d. Inquiring or securing Supplemental/Bid Bulletin(s) issued for the [Name of the Project]

9. [Name of Bidder] did not give or pay directly or indirectly, any commission, amount, fee, or any form of consideration, pecuniary or otherwise, to any person or official, personnel or representative of the government in relation to any procurement project or activity.

10. In case advance payment was made or given, failure to perform or deliver any of the obligations and undertakings in the contract shall be sufficient grounds to constitute criminal liability for Swindling (Estate) or the commission of fraud with unfaithfulness or abuse of confidence through misappropriating or converting any payment received by a person or entity under an obligation involving the duty to deliver certain goods or services, to the prejudice of the public and the government of the Philippines pursuant to Article 315 of Act No. 3815 s. 1930, as amended, or the Revised Penal Code.

IN WITNESS WHEREOF, I have hereunto set my hand this ___ day of ___, 20___ at _____, Philippines.

[Insert NAME OF BIDDER OR ITS AUTHORIZED REPRESENTATIVE]
[Insert signatory's legal capacity]
Affiant

[Jurat]

[Format shall be based on the latest Rules on Notarial Practice]

Bid Securing Declaration Form

(shall be submitted with the Bid if bidder opts to provide this form of bid security)

REPUBLIC OF THE PHILIPPINES)

CITY OF _____) S.S.

BID SECURING DECLARATION **Project Identification No.: *(insert number)***

To: *(insert name and address of the Procuring Entity)*

I/We, the undersigned, declare that

1. I/We understand that, according to your conditions, bids must be supported by a Bid Security, which may be in the form of a Bid Securing Declaration.
2. I/We accept that: (a) I/we will be automatically disqualified from bidding for any procurement contract with any procuring entity for a period of two (2) years upon receipt of your Blacklisting Order; and, (b) I/we will pay the applicable fine provided under Section 8 of the Guidelines on the Use of Bid Securing Declaration, within fifteen (15) days from receipt of the written demand by the procuring entity for the commission of acts resulting to the enforcement of the bid securing declaration under Sections 23.1(b), 34.2, 40.1 and 69.1, except 69.1(f), of the IRR of RA No. 9184, without prejudice to other legal action the government may undertake.
3. I/We understand that this Bid Securing Declaration shall cease to be valid on the following circumstances:
 - a. Upon expiration of the bid validity period, or any extension thereof pursuant to your request;
 - b. I am/we are declared ineligible or post-disqualified upon receipt of your notice to such effect, and (i) I/we failed to timely file a request for reconsideration or (ii) I/we filed a waiver to avail of said right; and
 - c. I am/we are declared the bidder with the Lowest Calculated Responsive Bid, and I/we have furnished the performance security and signed the Contract.

IN WITNESS WHEREOF, I/We have hereunto set my/our hand/s this ____ day of *(month)*
(year) at *(place of execution)*.

*(insert NAME OF BIDDER OR ITS
AUTHORIZED REPRESENTATIVE)*
(insert signatory's legal capacity)
Affiant

(insert)

(Formal shall be based on the latest Rules on Notarial Practice)

CONSTRUCTION METHODOLOGY

Name of Project: _____

Proposed Project Description: _____

Location: _____

MINIMUM SCOPE OF CONSTRUCTION METHODOLOGY

Notes:

The narrative construction method will guide and familiarize the contractor and the PPA on how the project shall be carried out in accordance with the highest standard of workmanship.

The construction method shall be consistent with the Bar Chart / S-Curve Schedule, Equipment Schedule and manpower Schedule.

Signature
(Authorized Signing Official)

MANPOWER SCHEDULE

Name of Project : _____

Proposed Project Description : _____

Location : _____

MANPOWER (Minimum)	CONTRACT DURATION (_____ Calendar Days)																					
	MONTHLY																					
	1	2	3	4	5	6	7	8	9	10	11	12	13	14	15	16	17	18	19	20	21	22
Project Manager																						
Project Engineer																						
Materials Engineer																						
Construction Safety & Health Officer																						
Specify other applicable positions, i.e.:																						
-Carpenter																						
-Steelman																						
-Mason																						
-Electrician																						
-Rigger																						
-Others																						

Signature
(Authorized Signing Official)

CASHFLOW BY QUARTER AND PAYMENT SCHEDULE

Name of Project : _____

Proposed Project Description : _____

Location : _____

Project Duration (days or Months)	Payment of Schedule (Monthly, in Pesos)	Cash Flow (Quarterly, in Pesos)
TOTAL		

NOTES:

- The cash flow by quarter and payment schedule should be consistent with the Bar Chart and S-curve.
- Payment schedule shall not be more than once a month.

Signature
(Authorized Signing Official)

JOINT VENTURE AGREEMENT

KNOW ALL MEN BY THESE PRESENTS:

That this JOINT VENTURE AGREEMENT is entered into by and between:

_____, of legal age, [civil status], Owner/Proprietor/
General Manager/President of (business name of JV partner #1)
with business address at _____

- and -

_____, of legal age, [civil status], Owner/Proprietor/
General Manager/President of (business name of JV partner #2)
with business address at _____

WITNESSETH:

1. That both parties agree to join together their capital, manpower, equipment, work experience and other resources and efforts to enable the Joint Venture to participate in the Eligibility Check, Bidding and Undertaking of the hereunder stated Contract of the Philippine Ports Authority – PMO Palawan;

(complete name/title of the contract to be bid)

2. That (business name of JV partner #1) shall contribute _____% and (business name of JV partner #2) shall contribute _____% of the logistics requirements of the Contract and the Joint Venture shall share the profit or loss on a _____ ratio;
3. That (business name of JV partner #1) and (business name of JV partner #2) shall assume joint and several responsibilities for the satisfactory performance of the Contract and the parties shall be jointly and severally liable to the Philippine Ports Authority – Head Office for all the obligations arising under the Contract;
4. That in case one of the parties declares bankruptcy or becomes insolvent, the remaining Joint Venture partner shall assume full responsibilities to undertake any correction works covered by the warranty;
5. That both parties agree that (name of Authorized Managing Officer) shall be the Official Representative and the Authorized Managing Officer and therefore the authorized signatory of the Joint Venture and is granted full power and authority to do, execute and perform any and all acts necessary and/or to represent the Joint Venture in the Eligibility Check, Bidding and Undertaking of the said Contract, as fully and effectively as the Joint Venture may do as if personally present with full power of substitution and revocation.

6. That the Joint Venture shall be known as _____
with business address at _____
7. That this Joint Venture Agreement shall remain in effect only for the above-stated
Contract until terminated by both parties.

IN WITNESS WHEREOF, we have hereunto set our hands this _____ day of
_____ 20____ at _____, Philippines.

(BUSINESS NAME OF JV PARTNER #1) (BUSINESS NAME OF JV PARTNER #2)

BY: _____ BY: _____
(Proprietor/Gen. Mgr./President) (Proprietor/Gen. Mgr./President)

WITNESSES

ACKNOWLEDGMENT

REPUBLIC OF THE PHILIPPINES)
) S.S

BEFORE ME, a Notary Public, for and in _____, Philippines personally
appeared:

Comm. Tax Cert. No. Date Issued Place of Issue

who are known to me and to me known to be the same persons who executed the
foregoing JOINT VENTURE AGREEMENT and acknowledged to me that the same are
their free and voluntary act and deed as well as the companies they represent. This
agreement, consisting of two (2) pages including this page where the acknowledgment
is written, have been signed by the parties and their instrumental witnesses in each and
every page hereof.

WITNESS MY HAND AND SEAL on this _____ day of _____, 20____ at
the place written above.

Doc. No. _____
Page No. _____
Book No. _____
Series of _____

NOTARY PUBLIC