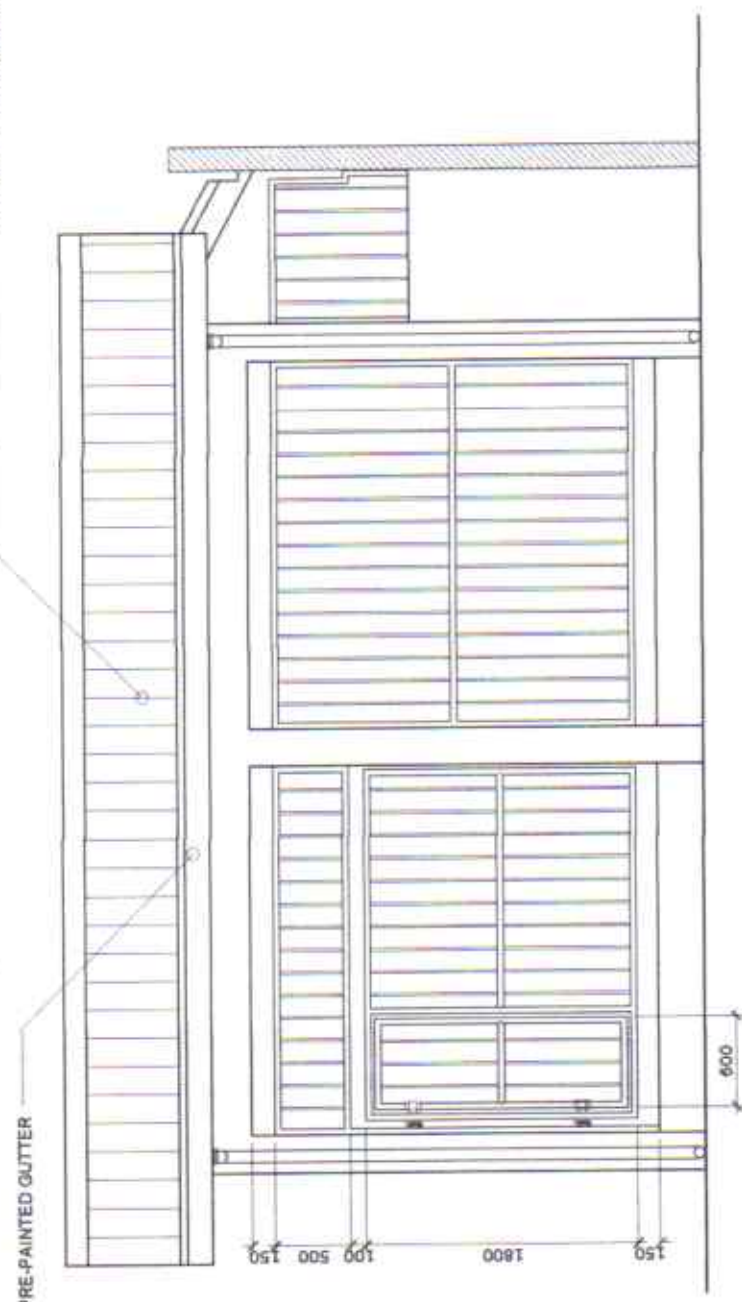


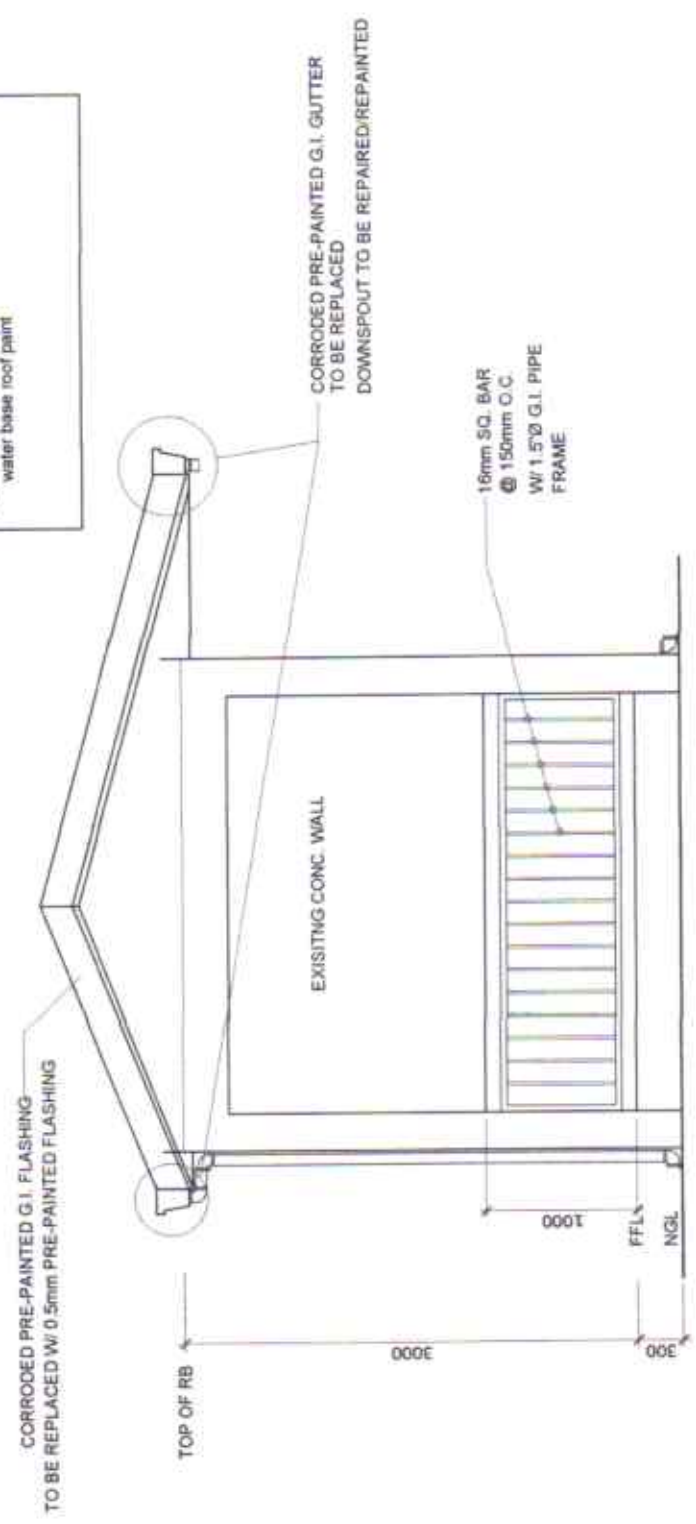
0.4mm PRE-PAINTED RIB TYPE ROOFING



REAR ELEVATION

SCALE 1:50 M

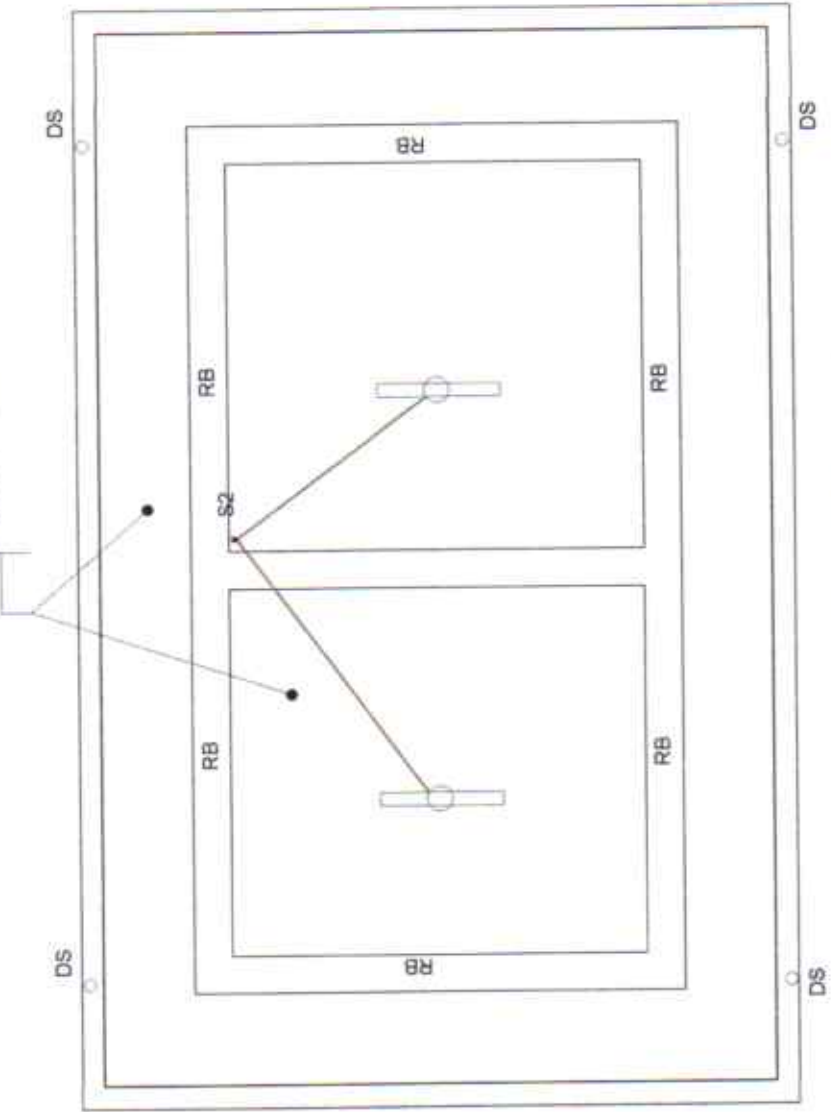
- REPAINTING WORKS
1. For steel grills & frames  
Primer coating: EPOXY PRIMER  
Top coating: EPOXY ENAMEL
  2. For walls & columns  
elastomeric paint
  3. For roofing  
water base roof paint



R-SIDE ELEVATION

SCALE 1:50 M

CEILING TO BE REPAINTED



REFLECTED CEILING PLAN



PANEL BOARD COVER/ HOUSING TO BE REPAINTED



PMO- MINDORO

PREPARED BY:  
FERNANDO J GALVEZO  
Engineering Assistant A

SUBMITTED BY:  
CONRAD C. CASAPAO JR.  
Assistant Port Engineer

CHECKED / REVIEWED BY:  
RONALD O. MATIBAG  
Acting Supervising Engineer A

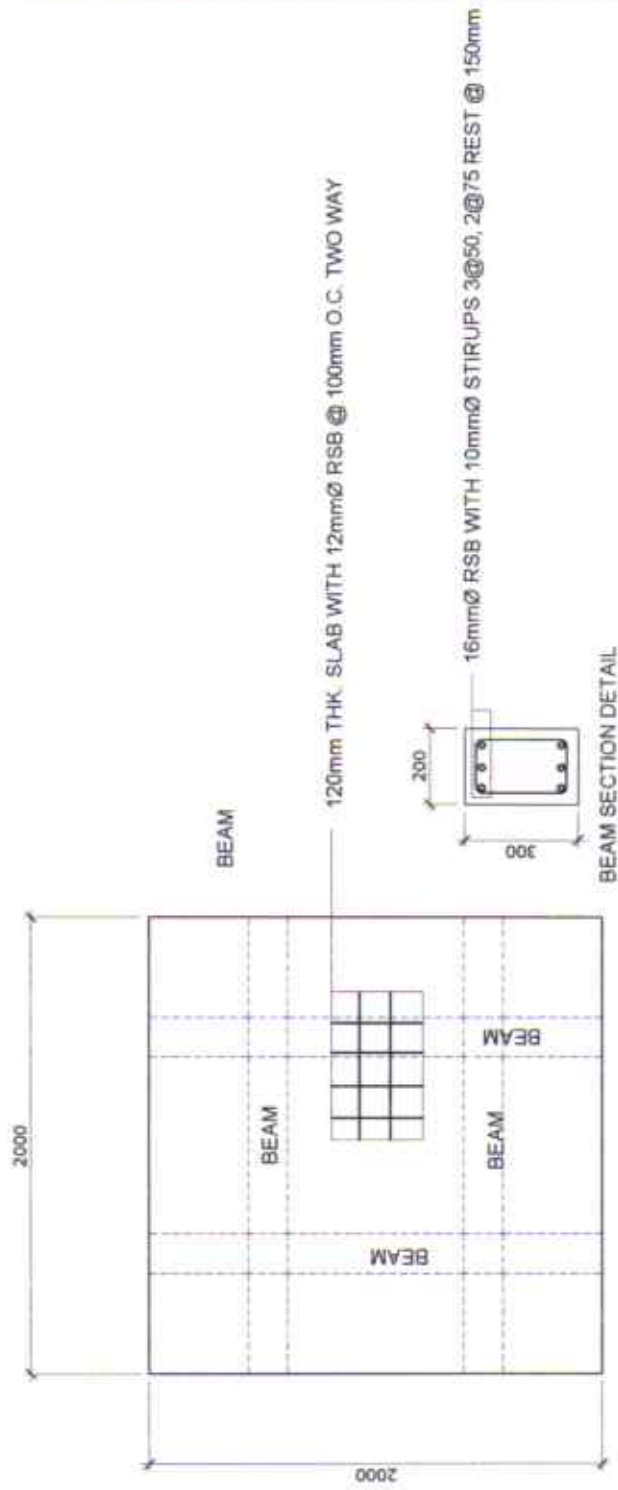
RECOMMENDING APPROVAL:  
MARGARITO D. MAILIG  
Acting ESD Manager

APPROVED:  
ARCIDI S. JUMAANI  
Acting Port Manager

SCALE: AS SHOWN  
SHEET NO. 27 of 42  
DATE: 26 MAR 2018



LOCATION PLAN



PLAN OF WATER TANK CONC. BASE TO BE REPAIRED



PLATFORM / CONC. BASE TO BE REPAIRED

SCOPE OF WORKS

- Demolition / disposal of Slab & beam
- Removal of existing water lines, water tank & railings
- RSB works, form works conc. flooring
- Plastering
- repair & installation of waterlines & railings
- repainting & waterproofing of slab



PROJECT TITLE:

PREPARED BY:  
FERNANDO J. GALVEZO  
Engineering Assistant A

SUBMITTED BY:  
CONRADJOE CRAPAO JR.  
Assistant Port Engineer

CHECKED / REVIEWED BY:  
RONALDO O. MAMBAG  
Acting Supervising Engineer A

RECOMMENDING APPROVAL:  
MARGARITO P. DIMALIG  
Acting ESD Manager

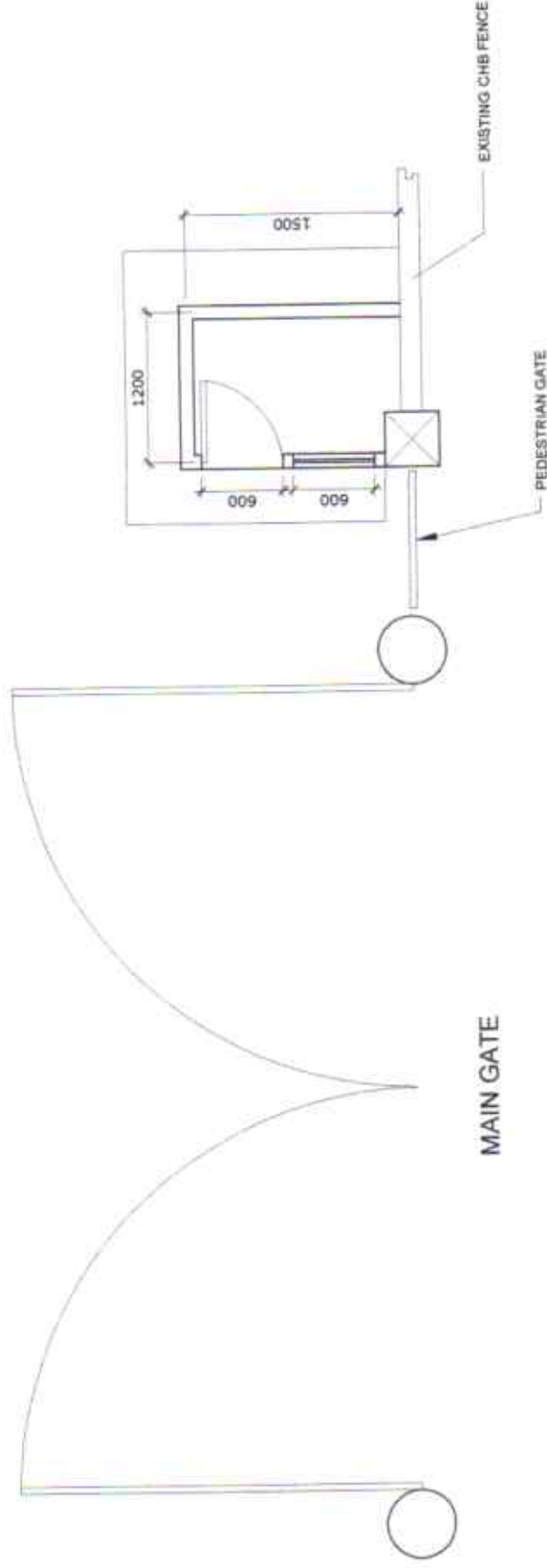
APPROVED:  
ARCIDI S. JUMAANI  
Acting Port Manager

SHEET CONTENTS:  
AS SHOWN

SHEET NO.  
28 of 42

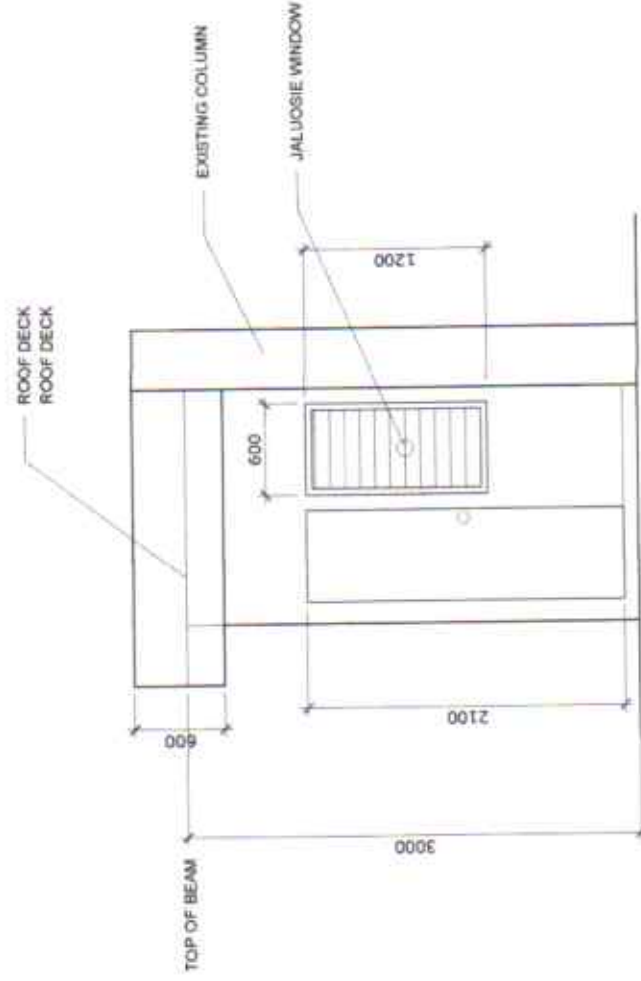
DATE:  
26 MAR 2018





LOCATION PLAN

PLAN OF GUARD HOUSE



ELEVATION

- REPAIR & REPAINTING INCLUDING CEILING
- REPLACEMENT OF ELECTRICAL FIXTURES/LIGHTINGS
- REPLACEMENT OF DOORS & WINDOWS

## GUARD HOUSE DETAIL



PROJECT TITLE: VARIOUS REPAIR WORKS  
PORT OF ABRA DE ILOG, OCCIDENTAL MINDORO

PREPARED BY:  
FERNANDO J GALVEZO  
Engineering Assistant A

SUBMITTED BY:  
CONRADO CASAPAO JR.  
Assistant Port Engineer

CHECKED / REVIEWED BY:  
RONALDO MATIBAG  
Acting Supervising Engineer A

RECOMMENDING APPROVAL:  
MARGARITO P. DIMAILIG  
Acting ESD Manager

APPROVED:  
ARCIDI S. JUMAANI  
Acting Port Manager

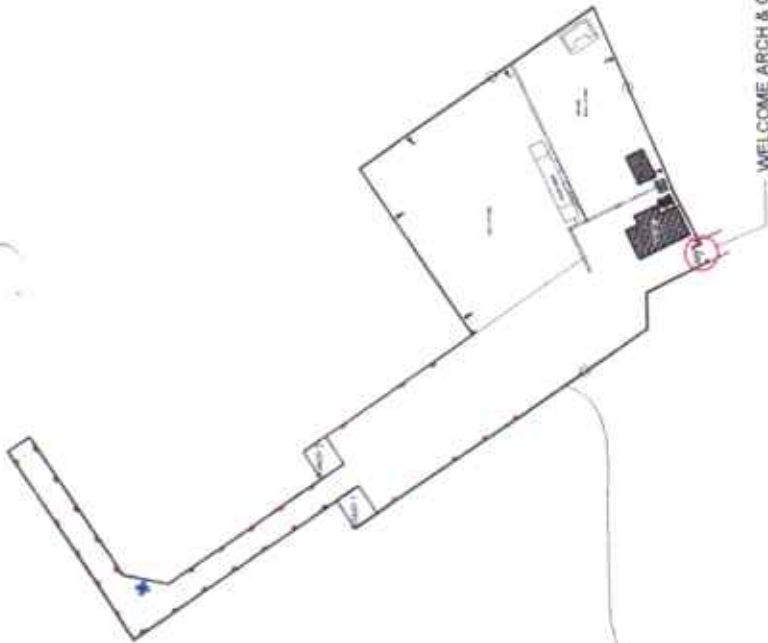
SHEET CONTENTS:

AS SHOWN

SCALE:  
AS SHOWN

SHEET NO.  
29 of 42

DATE:  
26 MAR 2018









LOCATION PLAN

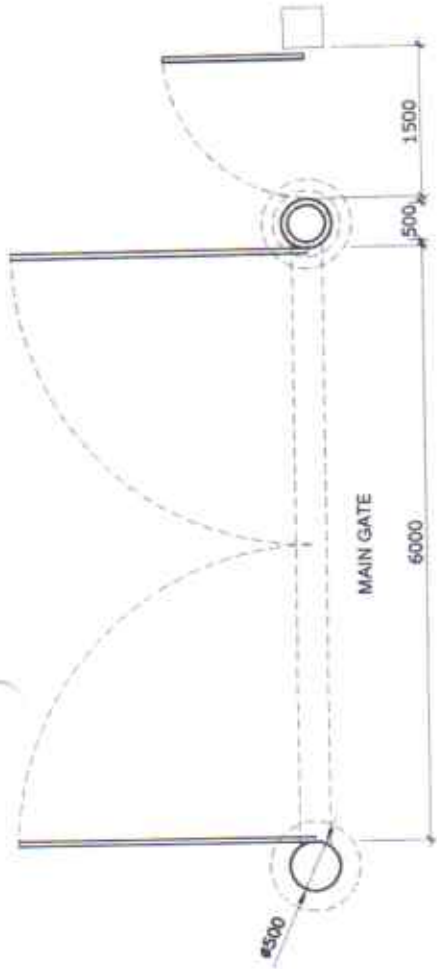


- REPLACEMENT OF GATE-1 INCLUDING PEDESTRIAN GATE
- REPAINTING
- REPLACEMENT OF LIGHTING FIXTURES ( see detail )

# WELCOME ARCH & GATE TO BE REPAIRED

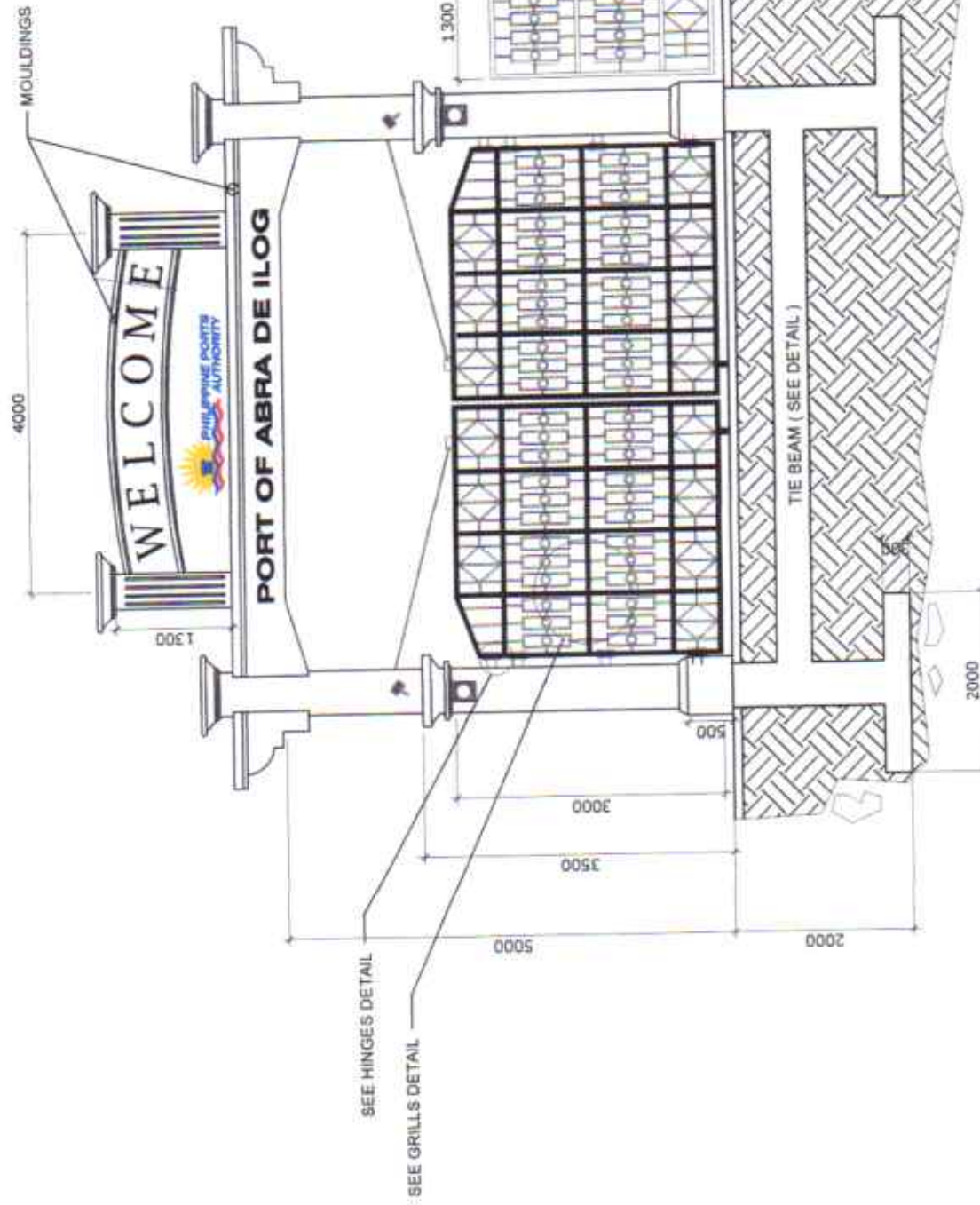
	<b>PROJECT TITLE:</b> VARIOUS REPAIR WORKS PORT OF ABRA DE ILOG, OCCIDENTAL MINDORO		<b>SHEET CONTENTS:</b> AS SHOWN		<b>SCALE:</b> AS SHOWN	
	<b>PREPARED BY:</b>  FERNANDO J. GALVEZO Engineering Assistant A	<b>SUBMITTED BY:</b>  CONRADO CASAPAO JR. Assistant Port Engineer	<b>CHECKED / REVIEWED BY:</b>  RONALD S. MATIBAG Acting Supervising Engineer A	<b>RECOMMENDING APPROVAL:</b>  MARGAPO P. DIMAILIG Acting ESD Manager	<b>APPROVED:</b>  ARCIDI S. JUMAANI Acting Port Manager	<b>AS SHOWN</b>
					<b>SHEET NO:</b> 30 of 42	<b>DATE:</b> 26 MAR 2018





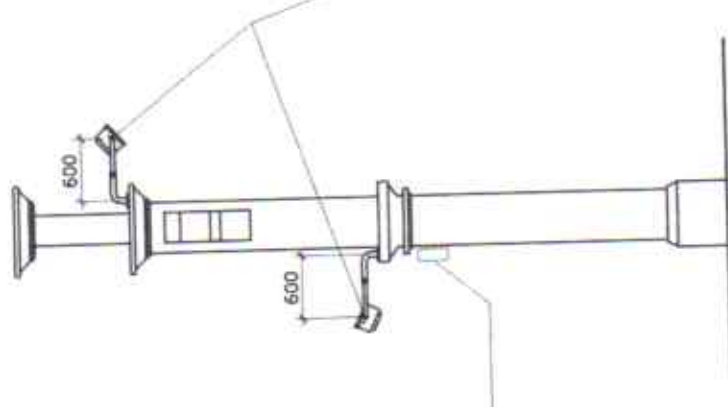
PLAN ( GATE NO. 1 & WELCOME ARCH )

SCALE 1:100 M



ELEVATION / SECTION

SCALE 1:75 M



SIDE ELEVATION

SCALE 1:75 M



LED External Lighting at Decasting Aluminium Casing Ø 150 x 133mm(18W)



PROJECT TITLE:  
VARIOUS REPAIR WORKS  
PORT OF ABRA DE ILOG, OCCIDENTAL MINDORO

PREPARED BY:  
FERNANDO J. GALVEZO  
Engineering Assistant A

SUBMITTED BY:  
CONRADO CASAPAO JR.  
Assistant Port Engineer

CHECKED / REVIEWED BY:  
RONALDO O. MATIAS  
Acting Supervising Engineer A

RECOMMENDING APPROVAL:  
MARGARITO P. DIMALIG  
Acting ESC Manager

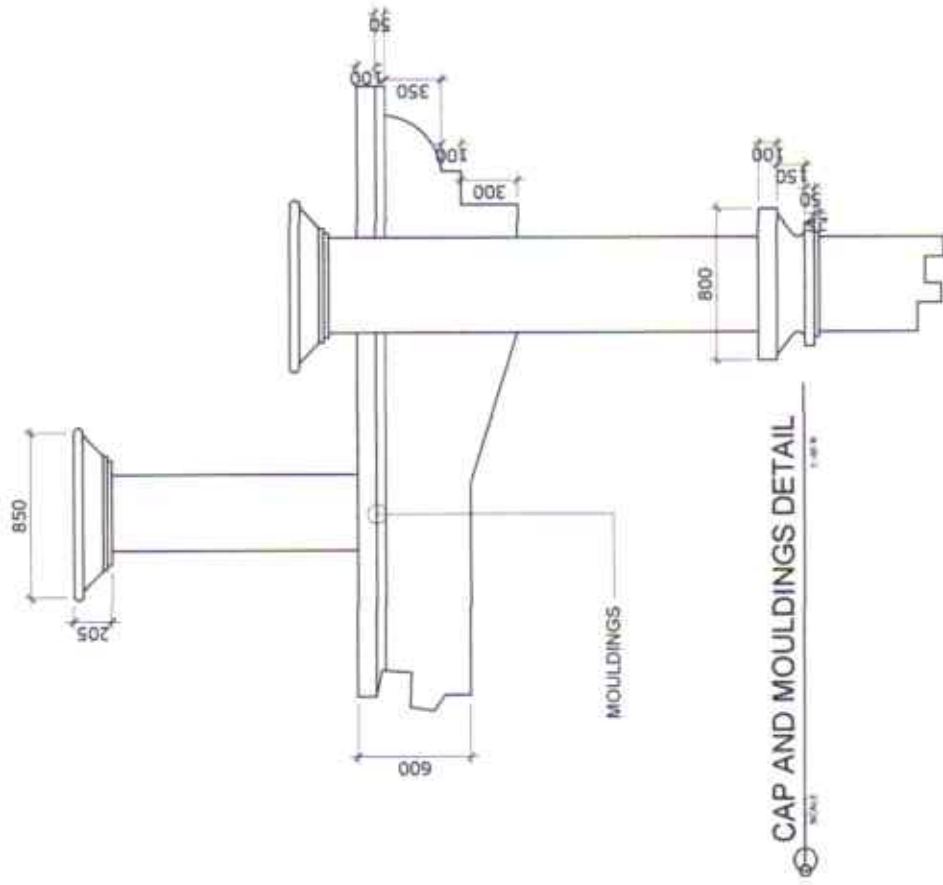
APPROVED:  
ARCIDI S. JUMAANI  
Acting Port Manager

SHEET CONTENTS:  
AS SHOWN

SCALE:  
AS SHOWN

SHEET NO.  
31 of 42

DATE:  
26 MAR 2018



PROJECT TITLE: VARIOUS REPAIR WORKS  
PORT OF ABRA DE ILOG, OCCIDENTAL MINDORO

PREPARED BY:  
FERNANDO J. GALVEZO  
Engineering Assistant A

SUBMITTED BY:  
CONRADOTE C. BAPAO JR.  
Assistant Port Engineer

CHECKED / REVIEWED BY:  
RONALDO O. MATIAS  
Acting Supervising Engineer A

RECOMMENDING APPROVAL:  
MARGARITO P. DIMAILIG  
Acting ESD Manager

APPROVED:  
ARCIDI S. JUMAANI  
Acting Port Manager

SHEET CONTENTS:  
AS SHOWN

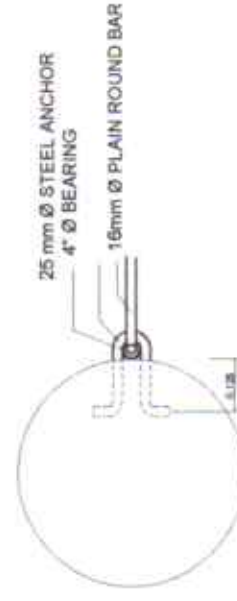
SCALE: AS SHOWN  
SHEET NO. 32 of 42  
DATE: 26 MAR 2018





### DETAIL OF GATE

SCALE 1:50 M



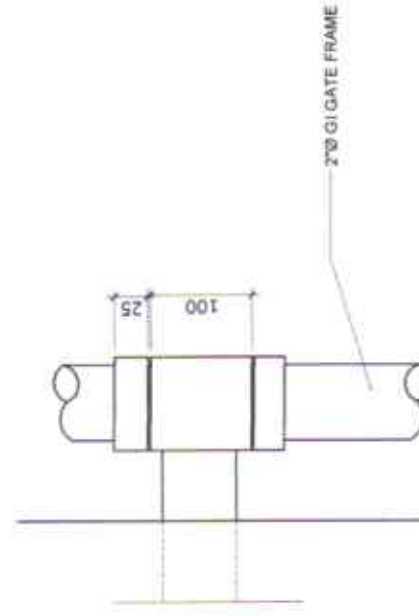
PLAN



SECTION


### DETAIL "A"

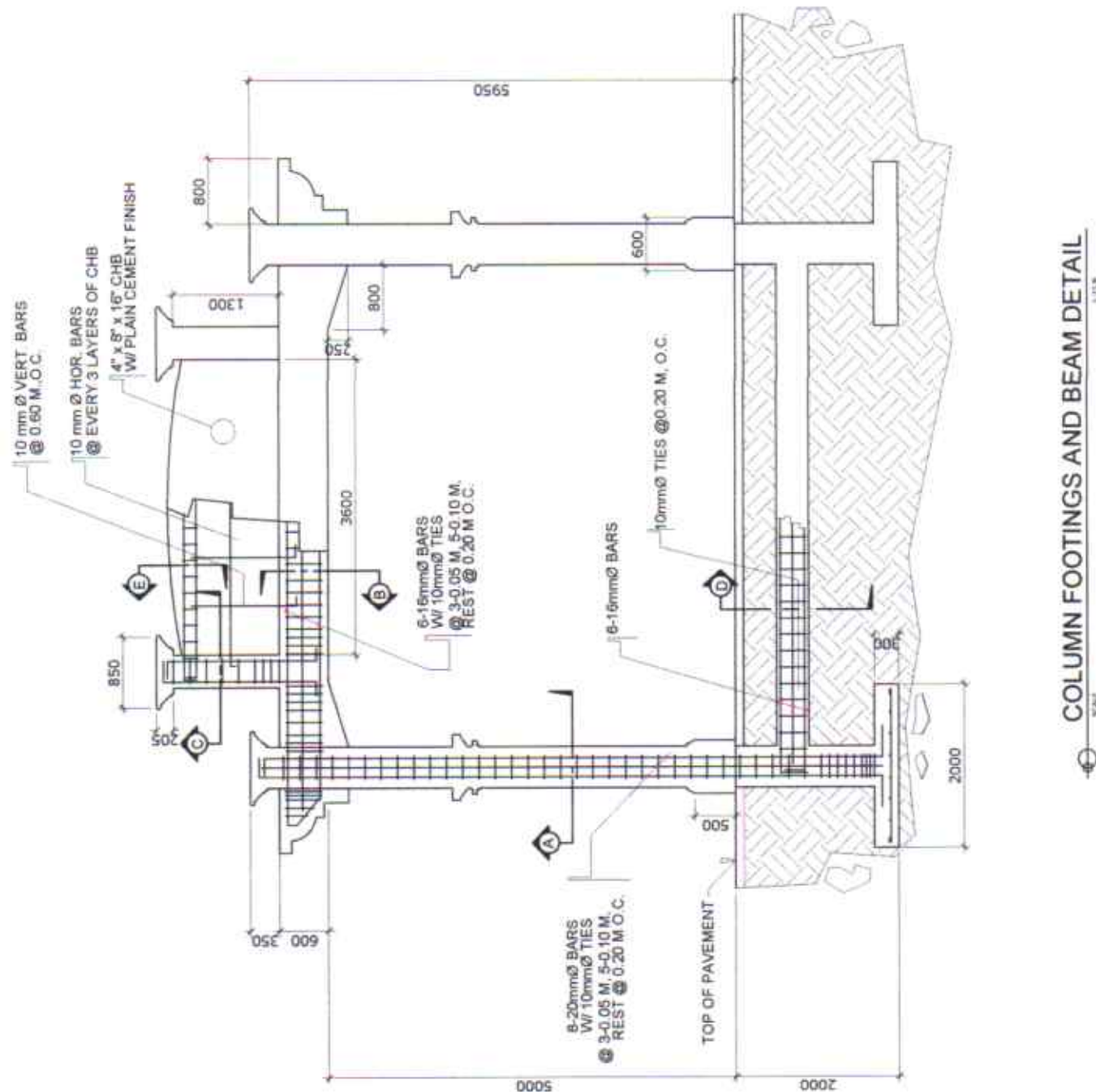
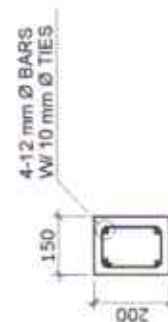
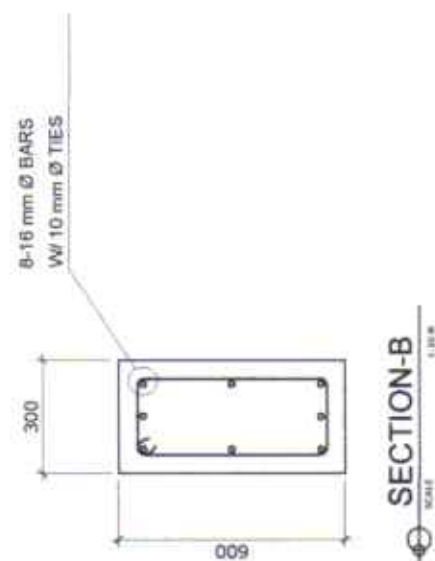
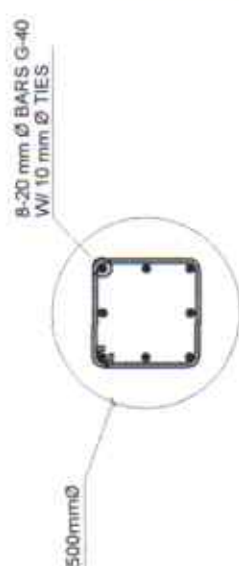
SCALE 1:10 M









### HINGE DETAIL

SCALE 1:10 M

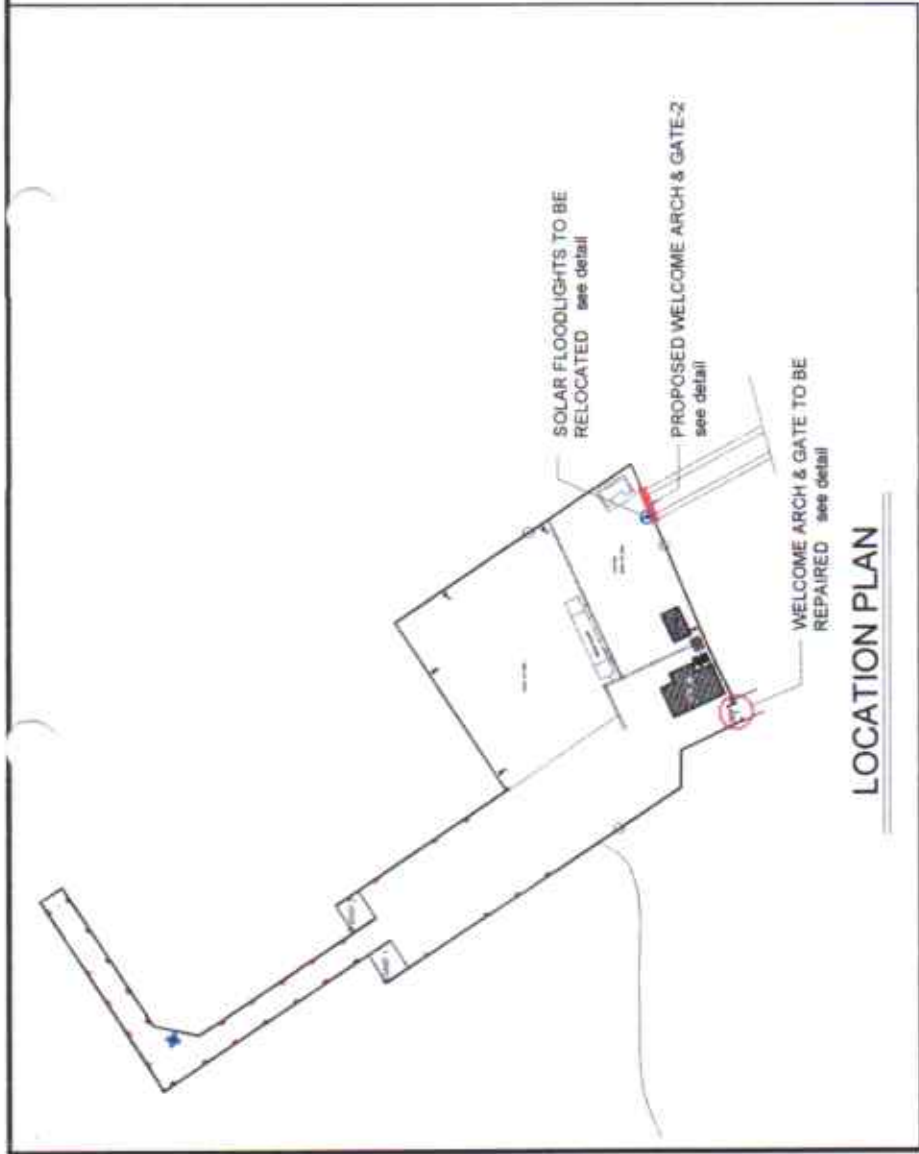
 <p>PHILIPPINE PORTS AUTHORITY PMO- MINDORO</p>	PROJECT TITLE: VARIOUS REPAIR WORKS PORT OF ABRA DE ILOG, OCCIDENTAL MINDORO		SHEET CONTENTS: AS SHOWN		SCALE: AS SHOWN
	PREPARED BY: FERNANDO J. GALVEZO Engineering Assistant A	SUBMITTED BY: CONRAD O. CASAPAO JR. Assistant Port Engineer	CHECKED / REVIEWED BY: RONALD O. MATIVAG Acting Supervising Engineer A	RECOMMENDING APPROVAL: MARGARITO P. DIMAILIG Acting ESD Manager	APPROVED: ARCIDI S. JUMAANI Acting Port Manager
	AS SHOWN				SHEET NO. 33 of 42 DATE: 26 MAR 2018



## COLUMN FOOTINGS AND BEAM DETAIL







<div> PHILIPPINE PORTS AUTHORITY  PMO- MINDORO</div>	PROJECT TITLE: VARIOUS REPAIR WORKS PORT OF ABRA DE ILOG, OCCIDENTAL MINDORO			SHEET CONTENTS: AS SHOWN	SCALE: AS SHOWN	
	PREPARED BY:  FERNANDO J. GALVEZO Engineering Assistant A	SUBMITTED BY:  CONRADO CASAPAO JR. Assistant Port Engineer	CHECKED / REVIEWED BY:  RONALD O. MATIBAG Acting Supervising Engineer A	RECOMMENDING APPROVAL:  MARGARITO P. DIMAILIG Acting ESD Manager	APPROVED:  ARCIDI S. JUMAANI Acting Port Manager	SHEET NO. 34 of 42
						DATE: 26 MAR 2018





NEWLY CONSTRUCTED PORT ACCESS ROAD

PORTION OF EXISTING PERIMETER FENCE TO BE DEMOLISHED FOR THE CONSTRUCTION OF WELCOME ARCH & GATE-2  
See Detail

 PHILIPPINE PORTS AUTHORITY PMO- MINDORO	PROJECT TITLE: VARIOUS REPAIR WORKS PORT OF ABRA DE ILOG, OCCIDENTAL MINDORO					SHEET CONTENTS:		SCALE: AS SHOWN
	PREPARED BY:  FERNANDO J. GALVEZO Engineering Assistant A	SUBMITTED BY:  CONRADO CASAPAO JR. Assistant Port Engineer	CHECKED / REVIEWED BY:  RONALDO M. MABAG Acting Supervising Engineer A	RECOMMENDING APPROVAL:  MARGARITO P. MAILIG Acting ESD Manager	APPROVED:  ARCIDI S. JUMAANI Acting Port Manager	AS SHOWN		SHEET NO. 35 of 42
								DATE: 26 MAR 2018

LINE OF EXISTING PERIMETER FENCE TO BE DEMOLISHED

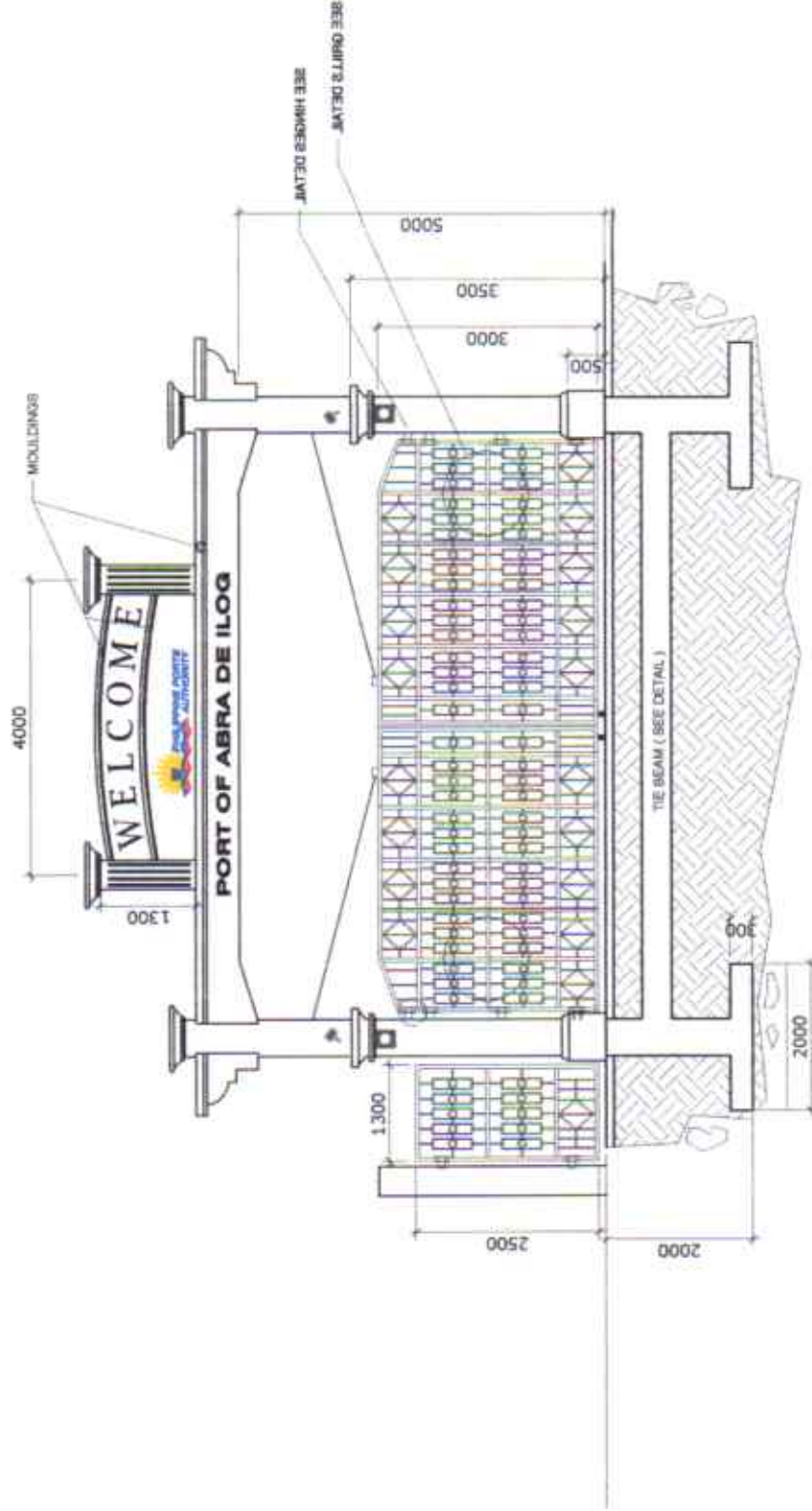
PEDESTRIAN GATE

PERIMETER FENCE-2

PERIMETER FENCE-2

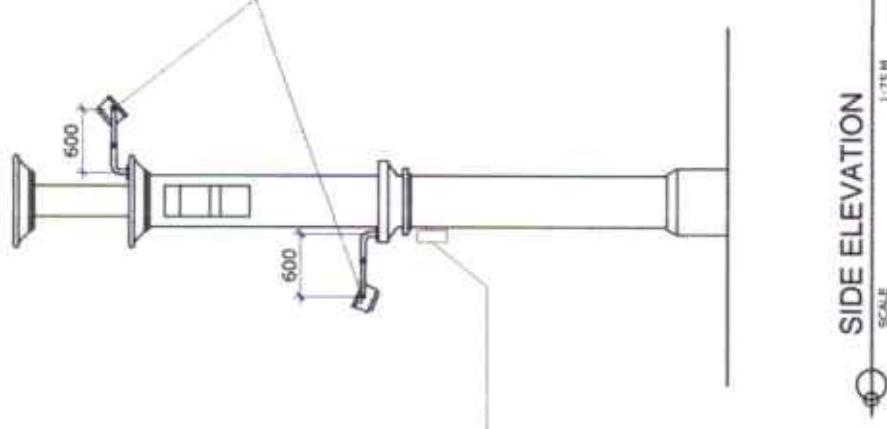
PLAN ( GATE NO. 1, 2 & WELCOME ARCH )

SCALE 1:100 M



ELEVATION / SECTION

SCALE 1:10 M



SIDE ELEVATION

SCALE 1:75 M



LED External Lighting at Decasting Aluminium Casing @ 150 x 133mm (18W)



PREPARED BY:  
FERNANDO J. GALVEZO  
Engineering Assistant A

SUBMITTED BY:  
CONRADO CASAPAO JR.  
Assistant Port Engineer

CHECKED / REVIEWED BY:  
RONALDO MATBAG  
Acting Supervising Engineer A

RECOMMENDING APPROVAL:  
MARGARITO DUMAILIG  
Acting ESD Manager

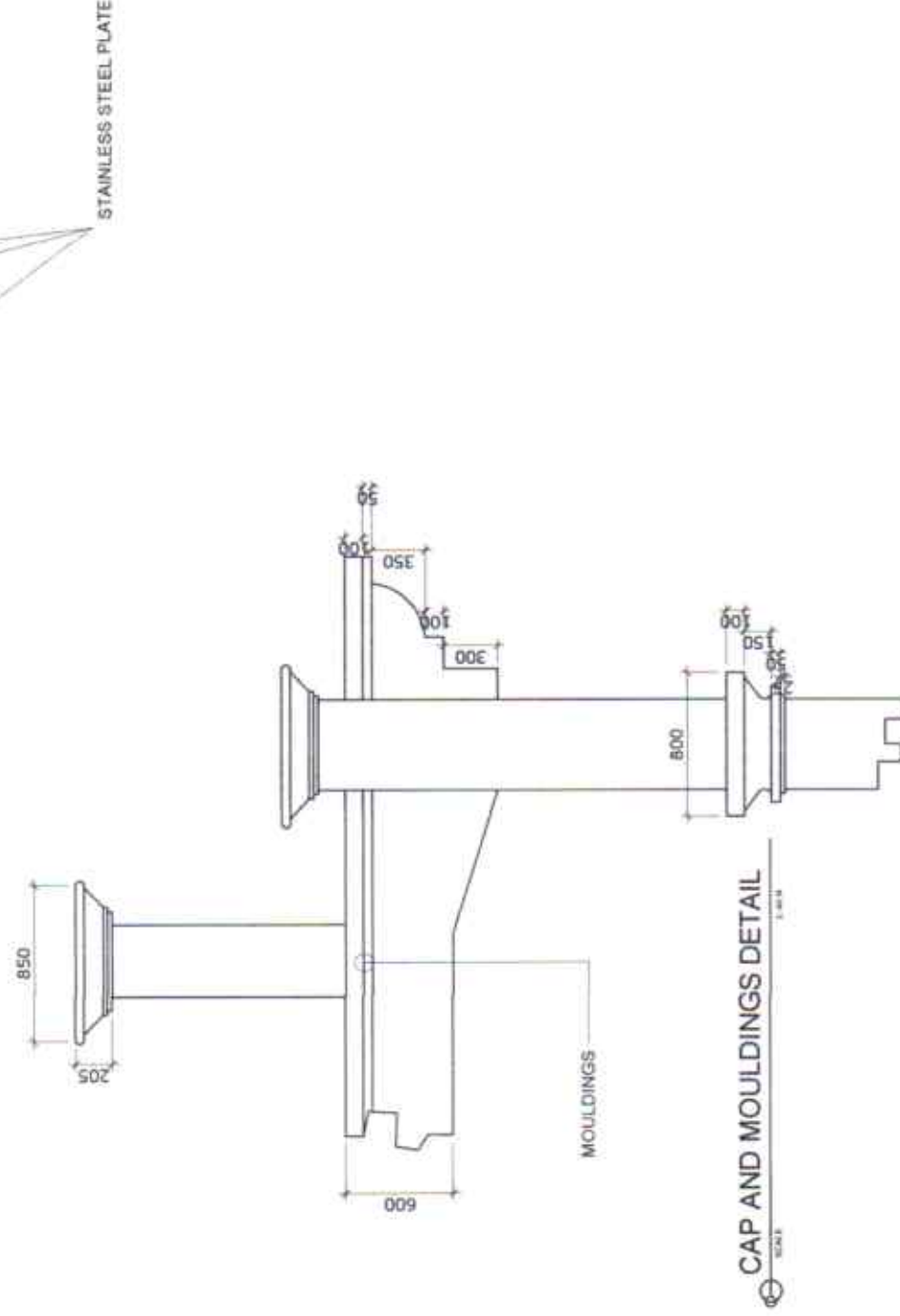
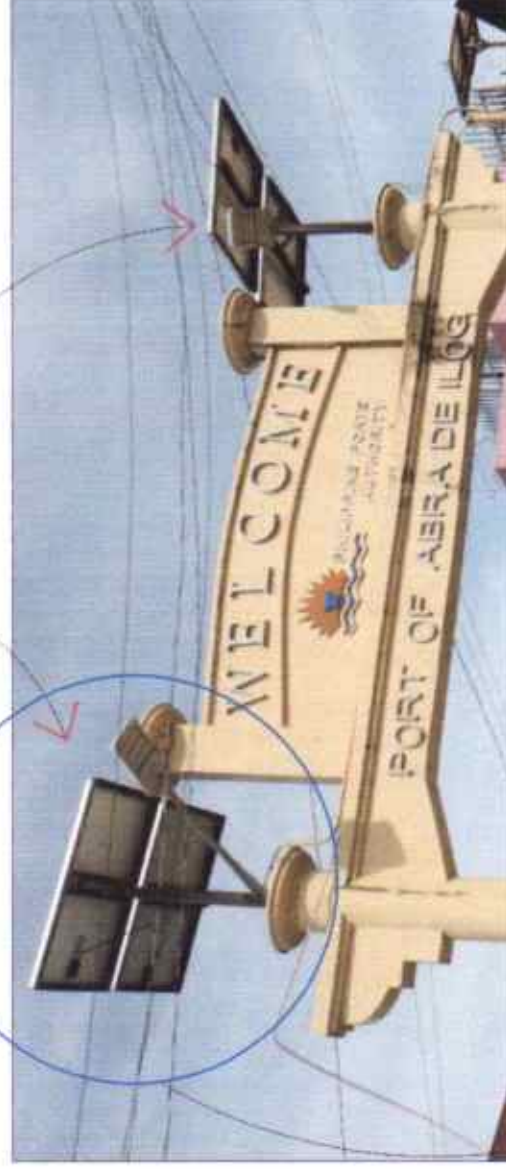
APPROVED:  
ARCIDI S. JUMAANI  
Acting Port Manager

SHEET CONTENTS:  
AS SHOWN

SCALE: AS SHOWN  
SHEET NO. 36 of 42  
DATE: 26 MAR 2018

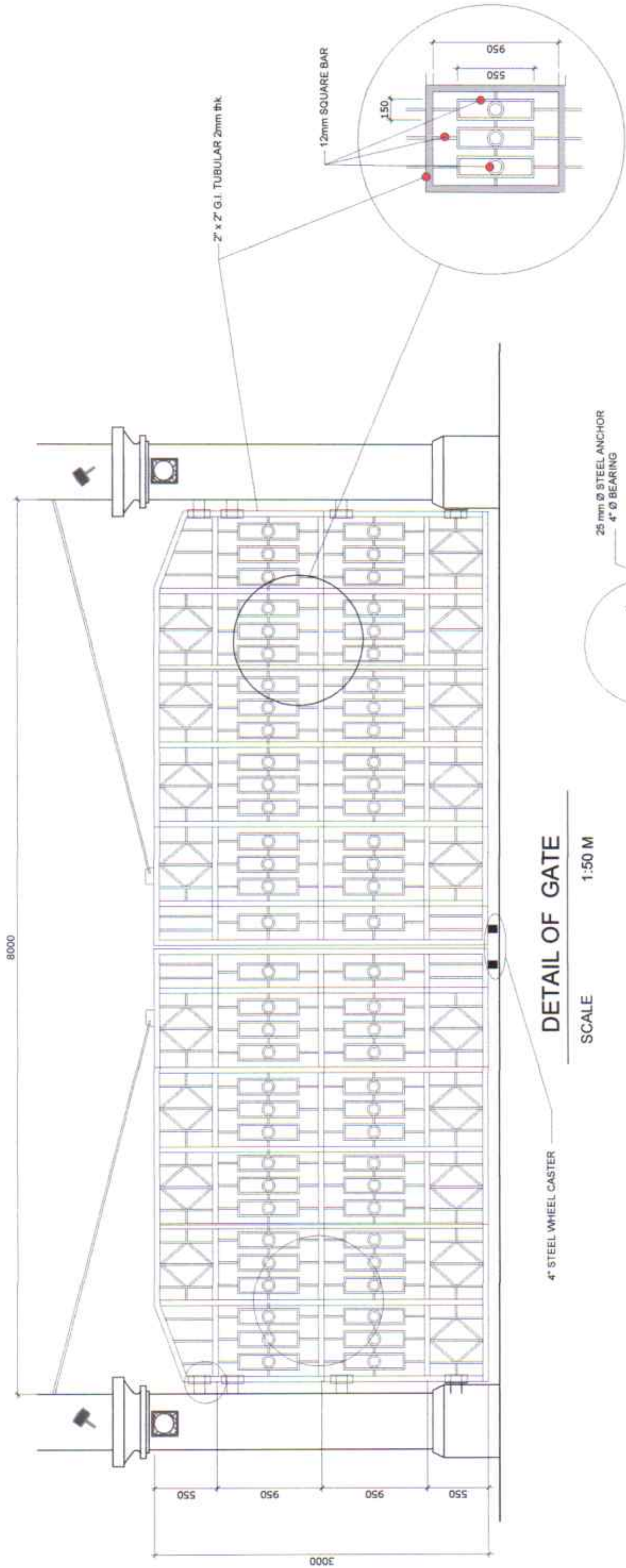


PROPOSED 2 SETS SOLAR LIGHTING SYSTEM  
SEE DETAIL OF CONC. BATTERY CASING



SOLAR SOLUTION FOR 112W LED Streetlight		
Picture	Name	Description
	112W LED Streetlight	110lm/ watt Meanwell driver DC24V Power Input
	Gel Type Battery (32.2x24x21.6cm; 58kg)	200AH/12V per set x 2 sets Material : Made of UL94V0 and UL94V-0 ABS plastic High quality AGM separator Pb-Ca grids minimize corrosion and prolong life
	Solar Panel (158x89x4cm; 18.8kg)	225W/72V per set x 2 sets Aluminum Frame Body Cell efficiency: 15.41% Maximum power voltage: 30.03V Maximum power current: 7.50A Open circuit voltage: 36.30V Short circuit current: 8.19A
	Solar Charge Controller Outdoor IP68	12V-18V 7.5A-15A Lumias Smart DC Series
	Battery Box	Double 200AH Waterproof Battery Box
Working Hours Per Day		12H (full brightness during the first 8 hours and half brightness during the last 4 hours) 30 hour power reserved
Continuous Working Hours when Battery is fully charged		3 days/72 hours
Ambient Temperature		-40°C ~ +55°C

	PROJECT TITLE:	VARIOUS REPAIR WORKS PORT OF ABRA DE ILOG, OCCIDENTAL MINDORO		SHEET CONTENTS:	SCALE:
	PREPARED BY:	SUBMITTED BY:	CHECKED / REVIEWED BY:	RECOMMENDING APPROVAL:	AS SHOWN
	 FERNANDO J. GALVEZO Engineering Assistant A	 CONRADO CASAPAO JR. Assistant Port Engineer	 RONALD O. MATIBAG Acting Supervising Engineer A	 MARGARITO F. DIMAILIG Acting ESD Manager	AS SHOWN
				APPROVED:	
				 ARCIDI S. JUMAANI Acting Port Manager	SHEET NO. 37 of 42
					DATE: 26 MAR 2018



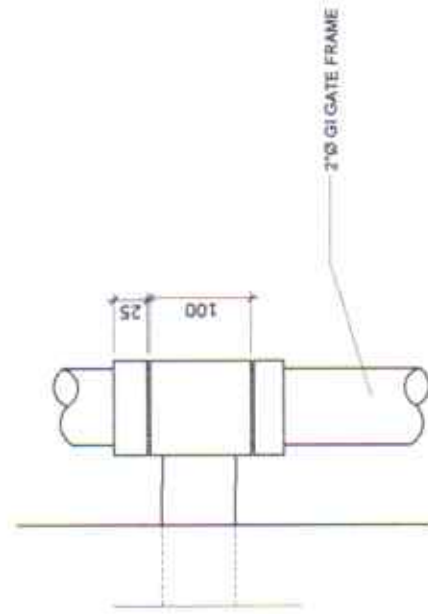
DETAIL OF GATE

SCALE 1:50 M

4" STEEL WHEEL CASTER

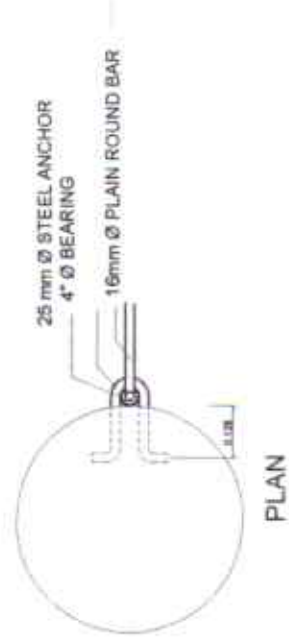
SCALE

1:50 M



HINGE DETAIL

SCALE 1:10 M



DETAIL "A"

SCALE 1:10 M



PROJECT TITLE: VARIOUS REPAIR WORKS  
PORT OF ABRA DE ILOG, OCCIDENTAL MINDORO

PREPARED BY:  
FERNANDO J. GALVEZO  
Engineering Assistant A

SUBMITTED BY:  
CONRADO CASAPAO JR.  
Assistant Port Engineer

CHECKED / REVIEWED BY:  
RONALD D. MATIBAG  
Acting Supervising Engineer A

RECOMMENDING APPROVAL:  
MARGARITO D. MAILIG  
Acting ESD Manager

APPROVED:  
ARCIDI S. JUMAANI  
Acting Port Manager

SHEET CONTENTS: AS SHOWN

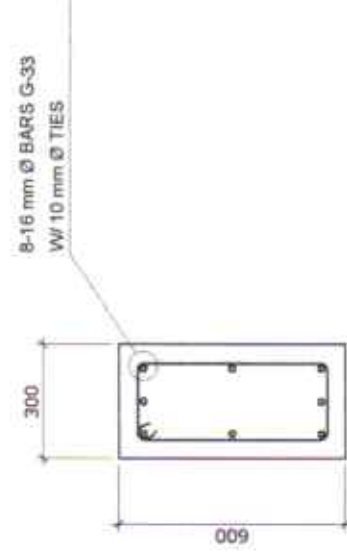
SCALE: AS SHOWN  
SHEET NO. 38 of 42  
DATE: 26 MAR 2018



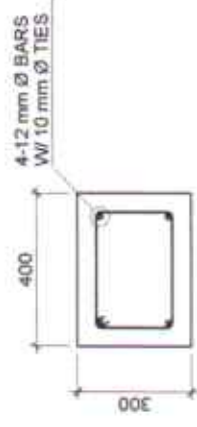


COLUMN FOOTING DETAIL

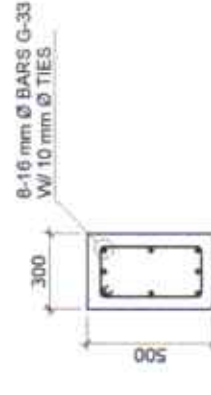
SECTION-A



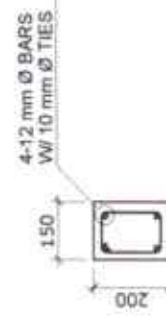
SECTION-B



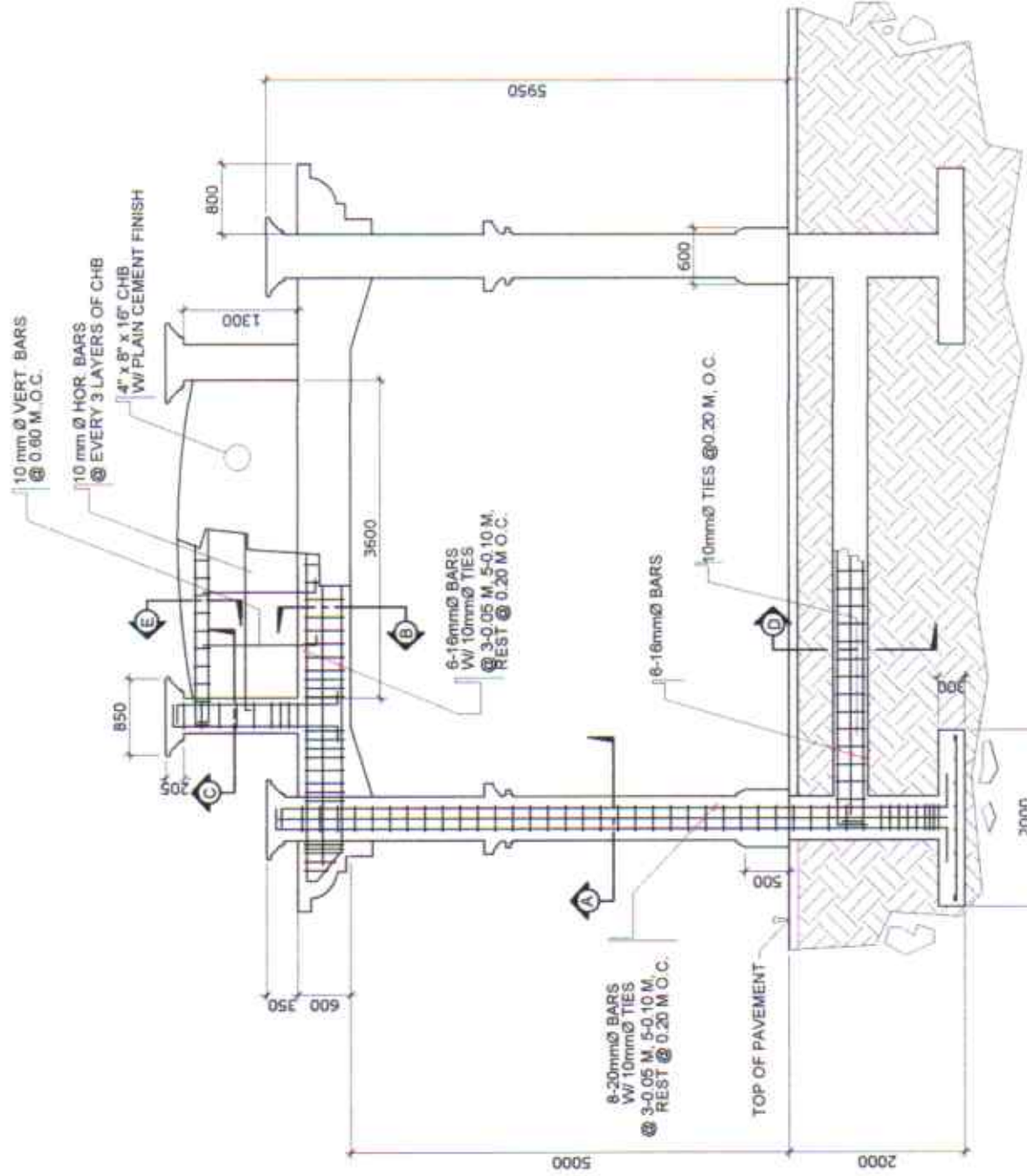
SECTION-C



SECTION-D



SECTION-E



COLUMN FOOTINGS AND BEAM DETAIL



PROJECT TITLE: VARIOUS REPAIR WORKS

PORT OF ABRA DE ILOG, OCCIDENTAL MINDORO

PREPARED BY:  
FERNANDO J. GALVEZO  
Engineering Assistant A

SUBMITTED BY:  
CONRADO E. CASAPAO JR.  
Assistant Port Engineer

CHECKED / REVIEWED BY:  
RONALDO O. MATIAS  
Acting Supervising Engineer A

RECOMMENDING APPROVAL:  
MARGARITO P. DUMAILIG  
Acting ESD Manager

APPROVED:  
ARCIDI S. JUMAANI  
Acting Port Manager

SHEET CONTENTS:

SCALE: AS SHOWN

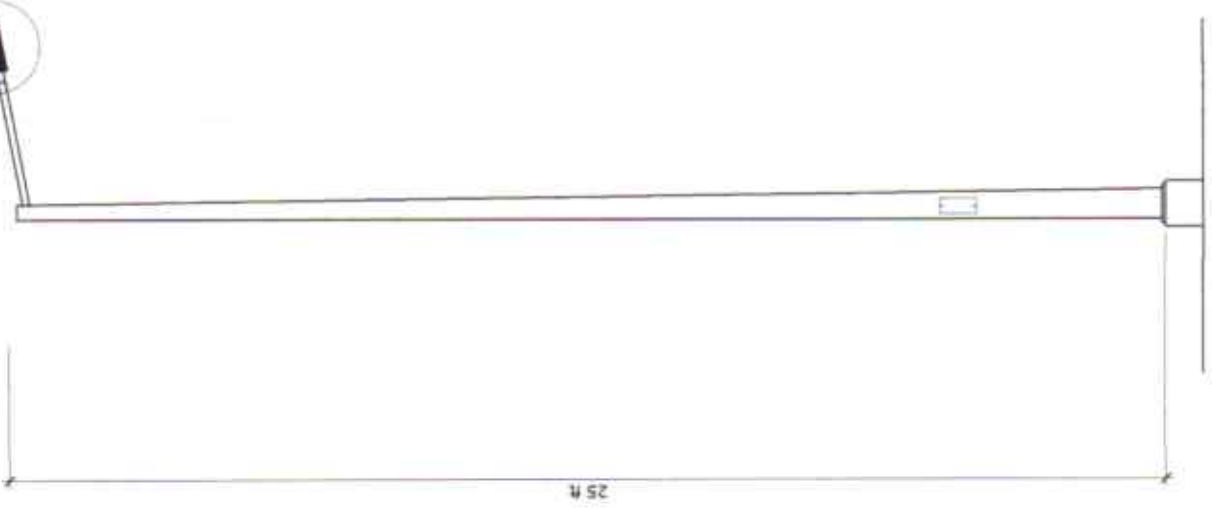
SHEET NO: 39 of 42

DATE: 26 MAR 2018

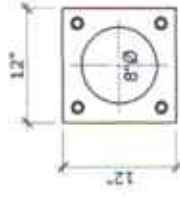


LOCATION PLAN

LED STREET LIGHTS ( see detail/specification )

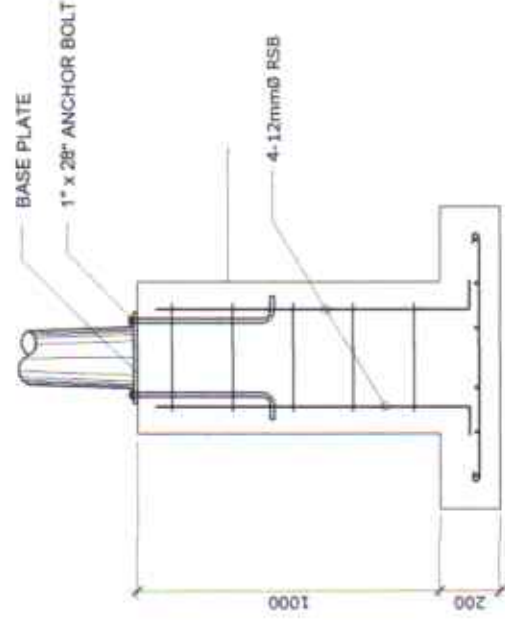
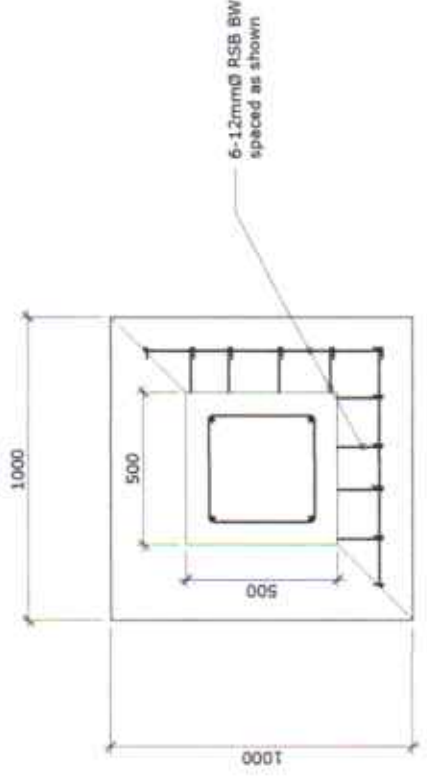


LED LIGHT POLE DETAIL






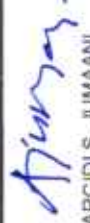


PLAN

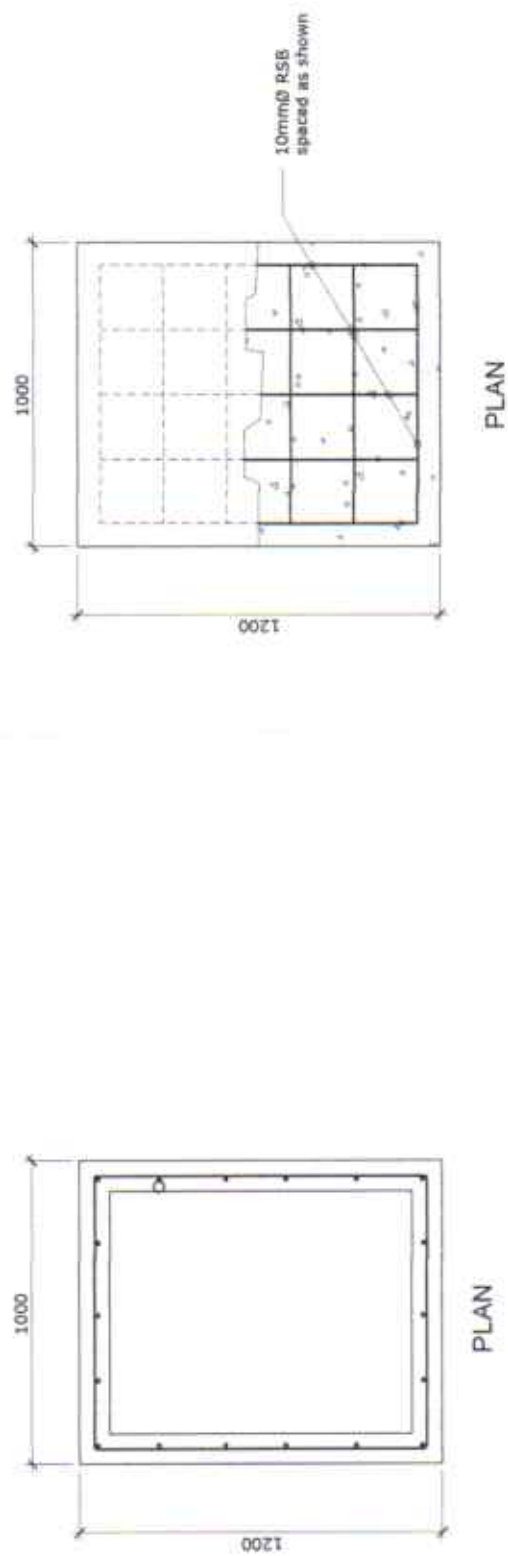
BASE FLATE DETAIL



CONC. PEDESTAL DETAIL  
SCALE 1/25 M.



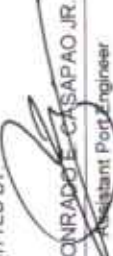


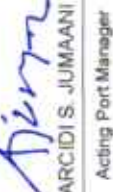
	PROJECT TITLE: VARIOUS REPAIR WORKS PORT OF ABRA DE ILOG, OCCIDENTAL MINDORO				SHEET CONTENTS: AS SHOWN		SCALE: AS SHOWN
	PREPARED BY:  FERNANDO J. GALVEZO Engineering Assistant A	SUBMITTED BY:  RONALD O. MATIBAG Acting Supervising Engineer A	CHECKED / REVIEWED BY:  RONALD O. MATIBAG Acting Supervising Engineer A	RECOMMENDING APPROVAL:  MARGARITO P. DIMALIG Acting ESD Manager	APPROVED:  ARCIDI S. JUMAANI Acting Port Manager		SHEET NO. 40 of 42
					DATE: 26 MAR 2018		





DETAIL OF CONCRETE CASING  
OF BATTERY



 PHILIPPINE PORTS AUTHORITY  PMO - MINDORO	PROJECT TITLE:  VARIOUS REPAIR WORKS PORT OF ABRA DE ILOG, OCCIDENTAL MINDORO				SHEET CONTENTS:  AS SHOWN		SCALE: AS SHOWN	
	PREPARED BY:  FERNANDO J. GALVEZO Engineering Assistant A	SUBMITTED BY:  CONRADO E. CASAPAO JR. Assistant Port Engineer	CHECKED / REVIEWED BY:  RONALD O. MAYBAG Acting Supervising Engineer A	RECOMMENDING APPROVAL:  MARGARITO P. DIMAILIG Acting ESD Manager	APPROVED:  ARCIDI S. JUMAANI Acting Port Manager	AS SHOWN		SHEET NO. 41 of 42
							DATE: 26 MAR 2018	

 <p>PHILIPPINE PORTS AUTHORITY</p> <p>PMO- MINDORO</p>	<p><b>PROJECT TITLE:</b></p> <p>VARIOUS REPAIR WORKS PORT OF ABRA DE ILOG, OCCIDENTAL MINDORO</p>		<p><b>PREPARED BY:</b></p> <p> FERNANDO J. GALVEZO Engineering Assistant A</p>	<p><b>SUBMITTED BY:</b></p> <p> COMPADRE CASAPAO JR. Assistant Port Engineer</p>	<p><b>CHECKED / REVIEWED BY:</b></p> <p> RONALD O. MATIBAG Acting Supervising Engineer A</p>	<p><b>RECOMMENDING APPROVAL:</b></p> <p> MARGARITO P. DIMAILIG Acting ESD Manager</p>	<p><b>APPROVED:</b></p> <p> ARCIDI S. JUMAANI Acting Port Manager</p>	<p><b>SHEET CONTENTS:</b></p> <p>AS SHOWN</p>	<p><b>SCALE:</b></p> <p>AS SHOWN</p>	<p><b>SHEET NO.</b></p> <p>42 of 42</p>	<p><b>DATE:</b></p> <p>26 MAR 2018</p>
---	---	--	---	---	---	---	--	---	--------------------------------------	---	--