

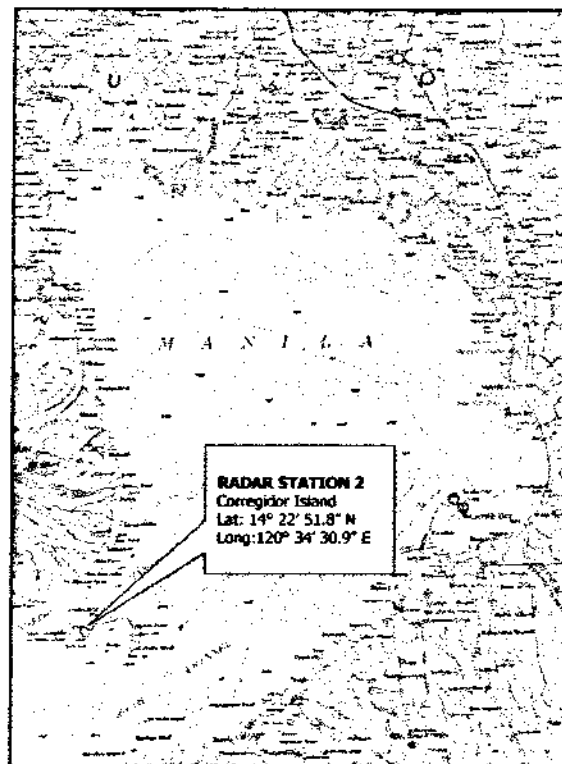


# RESTORATION/IMPROVEMENT AND REPAINTING OF VTMS RADAR STATION 2 FACILITY

AT CORREGIDOR ISLAND, CAVITE  
(PROJECT ID NO. HO-INFRA-PPDD-23-0055)

## LOCATION MAP

3. Radar Station 2 (Corregidor Island)



## BID DOCUMENTS

DECEMBER 2023

# ***TABLE OF CONTENTS***

## Glossary of Terms, Abbreviations, and Acronyms

III-IV

## SECTION I INVITATION TO BID

1-2

## SECTION II INSTRUCTIONS TO BIDDERS

ITB 1-6

## SECTION III

## BID DATA SHEET

BDS 1-2

## SECTION IV

## GENERAL CONDITIONS OF CONTRACT

GCC 1-4

## SECTION V

## SPECIAL CONDITIONS OF CONTRACT

SCC 1

## SECTION VI

## TECHNICAL SPECIFICATIONS

TS 1-25

Division 01: Demolition and Removal Works

1-2

Division 02: Metal Works

3-7

Division 03: Welded Structural Steel

8-11

Division 04: Painting Works

12-17

Division 05: Roofing

18

Division 06: Aluminum Glass Windows

19-20

Division 07: Waterproofing.....	21
Division 08: Project Billboard.....	22-24
Division 09: Safety Signages and Barricades.....	25
<b>SECTION VII DRAWINGS (APPROVED PLANS) .....</b>	<b>PD 1-8</b>
<b>SECTION VIII BILL OF QUANTITIES AND ATTACHMENTS .....</b>	<b>BQ 1-24</b>
1a Bid Summary .....	1/1
1b Bill of Quantities .....	1-11/11
2. Annex 1 (Basis of Payments) .....	12
3. Annex 2 (Facilities to be Provided) .....	13
4. Annex 3 (Minimum Equipment Requirements) .....	14
5. Annex 4 (Construction Safety and Health Requirements) .....	15
6. Annex 5 (Minimum Testing Requirements) .....	16-24
<b>SECTION IX Checklist of Technical and Financial Documents .....</b>	<b>CL 1-2</b>
<b>SECTION X BIDDING FORMS .....</b>	<b>BF 1-21</b>
1. Bid Form .....	1-2
2. Statement of all On-going Government and Private Contracts, including contracts awarded but not yet started .....	3
3. Statement of the Bidder's Single Largest Completed Contracts (SLCC) Similar to the Contract to be Bid .....	4
4. Experience Record on Similarly Completed Projects .....	5
5. Financial Data .....	6
6. List of Contractor's Personnel .....	7
7. List of Contractor's Equipment Units .....	8
8. Omnibus Sworn Statement for Sole Proprietorship .....	9-10
9. Omnibus Sworn Statement for Partnership or Cooperative .....	11-12
10. Omnibus Sworn Statement for Corporation or Joint Venture .....	13-14
11. Bid-Securing Declaration .....	15
12. Construction Methodology .....	16
13. Manpower Schedule .....	17
14. Equipment Utilization Schedule .....	18
15. Cash Flow by Quarter and Payment Schedule .....	19
16. Contract Agreement .....	20-21

*GLOSSARY OF TERMS,  
ABBREVIATIONS, AND  
ACRONYMS*

## ***Glossary of Terms, Abbreviations, and Acronyms***

**ABC** – Approved Budget for the Contract.

**ARCC** – Allowable Range of Contract Cost.

**BAC** – Bids and Awards Committee.

**Bid** – A signed offer or proposal to undertake a contract submitted by a bidder in response to and in consonance with the requirements of the bidding documents. Also referred to as *Proposal* and *Tender*. (2016 revised IRR, Section 5[c])

**Bidder** – Refers to a contractor, manufacturer, supplier, distributor and/or consultant who submits a bid in response to the requirements of the Bidding Documents. (2016 revised IRR, Section 5[d])

**Bidding Documents** – The documents issued by the Procuring Entity as the bases for bids, furnishing all information necessary for a prospective bidder to prepare a bid for the Goods, Infrastructure Projects, and/or Consulting Services required by the Procuring Entity. (2016 revised IRR, Section 5[e])

**BIR** – Bureau of Internal Revenue.

**BSP** – Bangko Sentral ng Pilipinas.

**CDA** – Cooperative Development Authority.

**Consulting Services** – Refer to services for Infrastructure Projects and other types of projects or activities of the GOP requiring adequate external technical and professional expertise that are beyond the capability and/or capacity of the GOP to undertake such as, but not limited to: (i) advisory and review services; (ii) pre-investment or feasibility studies; (iii) design; (iv) construction supervision; (v) management and related services; and (vi) other technical services or special studies. (2016 revised IRR, Section 5[f])

**Contract** – Refers to the agreement entered into between the Procuring Entity and the Supplier or Manufacturer or Distributor or Service Provider for procurement of Goods and Services; Contractor for Procurement of Infrastructure Projects; or Consultant or Consulting Firm for Procurement of Consulting Services; as the case may be, as recorded in the Contract Form signed by the parties, including all attachments and appendices thereto and all documents incorporated by reference therein.

**Contractor** – is a natural or juridical entity whose proposal was accepted by the Procuring Entity and to whom the Contract to execute the Work was awarded. Contractor as used in these Bidding Documents may likewise refer to a supplier, distributor, manufacturer, or consultant.

**CPI** – Consumer Price Index.

**DOLE** – Department of Labor and Employment.

**DTI** – Department of Trade and Industry.

**Foreign-funded Procurement or Foreign-Assisted Project** – Refers to procurement whose funding source is from a foreign government, foreign or international financing institution as specified in the Treaty or International or Executive Agreement. (2016 revised IRR, Section 5[b]).

## Acronyms

**GFI – Government Financial Institution.**

**GOCC – Government-owned and/or –controlled corporation.**

**Goods –** Refer to all items, supplies, materials and general support services, except Consulting Services and Infrastructure Projects, which may be needed in the transaction of public businesses or in the pursuit of any government undertaking, project or activity, whether in the nature of equipment, furniture, stationery, materials for construction, or personal property of any kind, including non-personal or contractual services such as the repair and maintenance of equipment and furniture, as well as trucking, hauling, janitorial, security, and related or analogous services, as well as procurement of materials and supplies provided by the Procuring Entity for such services. The term "related" or "analogous services" shall include, but is not limited to, lease or purchase of office space, media advertisements, health maintenance services, and other services essential to the operation of the Procuring Entity. (2016 revised IRR, Section 5[r])

**GOP – Government of the Philippines.**

**Infrastructure Projects –** Include the construction, improvement, rehabilitation, demolition, repair, restoration or maintenance of roads and bridges, railways, airports, seaports, communication facilities, civil works components of information technology projects, irrigation, flood control and drainage, water supply, sanitation, sewerage and solid waste management systems, shore protection, energy/power and electrification facilities, national buildings, school buildings, hospital buildings, and other related construction projects of the government. Also referred to as *civil works or works*. (2016 revised IRR, Section 5[u])

**LGUs – Local Government Units.**

**NFCC – Net Financial Contracting Capacity.**

**NGA – National Government Agency.**

**PCAB – Philippine Contractors Accreditation Board.**

**PhilGEPS - Philippine Government Electronic Procurement System.**

**Procurement Project –** refers to a specific or identified procurement covering goods, infrastructure project or consulting services. A Procurement Project shall be described, detailed, and scheduled in the Project Procurement Management Plan prepared by the agency which shall be consolidated in the procuring entity's Annual Procurement Plan. (GPPB Circular No. 06-2019 dated 17 July 2019)

**PSA – Philippine Statistics Authority.**

**SEC – Securities and Exchange Commission.**

**SLCC – Single Largest Completed Contract.**

**UN – United Nations.**

***SECTION I***  
***INVITATION TO BID***





PHILIPPINE  
PORTS  
AUTHORITY



## INVITATION TO BID

FOR THE

### **RESTORATION/IMPROVEMENT AND REPAINTING OF VTMS RADAR STATION 2 FACILITY AT CORREGIDOR ISLAND, CAVITE**

The Philippine Ports Authority, through the Corporate Budget of the Authority for CY 2023, intends to apply the sum of **P1,353,759.62** being the Approved Budget for the Contract (ABC) to payments under the contract for the **RESTORATION/IMPROVEMENT AND REPAINTING OF VTMS RADAR STATION 2 FACILITY AT CORREGIDOR ISLAND, CAVITE (HO-INFRA-PPDD-23-0055)**. Bids received in excess of the ABC shall be automatically rejected at bid opening.

The Philippine Ports Authority now invites bids for the above Procurement Project. Completion of the Works is required in **Ninety (90) calendar days** from the receipt by the successful bidder of the Notice to Proceed. Bidders should have completed a contract similar to the Project. The description of an eligible bidder is contained in the Bidding Documents, particularly, in Section II (Instructions to Bidders).

Bidding will be conducted through open competitive bidding procedures using a non-discretionary "pass/fail" criterion as specified in the 2016 Revised Implementing Rules and Regulations (IRR) of Republic Act (RA) 9184.

Interested bidders may obtain further information from the Philippine Ports Authority Bids and Awards Committee (BAC) and inspect the Bidding Documents at the address given below from 8:00 a.m. to 5:00 p.m., Monday to Friday.

A complete set of Bidding Documents may be acquired by interested Bidders starting on **23 December 2023** from the given address and website(s) below and upon payment of the applicable fee for the Bidding Documents, pursuant to the latest Guidelines issued by the GPPB, in the amount of **FIVE THOUSAND PESOS (P5,000.00)**. The Procuring Entity shall allow the bidder to present its proof of payment for the fees in person.

The Philippine Ports Authority's Bids and Awards Committee will hold a Pre-Bid Conference on **05 January 2024 at 10:30 a.m.** at the PPA Function Room, 7th Floor, PPA Bldg., Bonifacio Drive, South Harbor, Port Area, Manila, which shall be open to all prospective bidders.

Bids must be duly received by the BAC Secretariat through manual submission at the office address indicated below on or before **18 January 2024 at 1:00 p.m.** Late bids shall not be accepted.

All bids must be accompanied by a bid security in any of the acceptable forms and in amount stated in ITB Clause 16.

Bid opening shall be on **18 January 2024 at 3:00 p.m.** at the 7th Floor, PPA Building, A. Bonifacio Drive, South Harbor, Port Area, Manila. Bids will be opened in the presence of the bidders' representatives who choose to attend the activity.

The Philippine Ports Authority reserves the right to reject any and all bids, declare a failure of bidding, or not award the contract at any time prior to contract award in accordance with Sections 35.6 and 41 of the 2016 revised Implementing Rules and Regulations of RA No. 9184, without thereby incurring any liability to the affected bidder or bidders.

- **Required PCAB Registration: SMALL B – BUILDING**

For further information, please refer to:

BAC Secretariat, Philippine Ports Authority  
5th Floor, PPA Bldg., A. Bonifacio Drive,  
South Harbor, Port Area, Manila  
Telephone Nos. 8 527-47-35  
8 527-83-56 to 83 loc. 539  
PPA Website: [www.ppa.com.ph](http://www.ppa.com.ph)  
PhilGEPS Website: [www.philgeps.gov.ph](http://www.philgeps.gov.ph)



**MARK JON S. PALOMAR**  
Chairperson, PPA Head Office Bids and Awards  
Committee for Engineering Projects (HO-BAC-EP)

**SECTION II**

**INSTRUCTIONS TO BIDDERS**

## 1. Scope of Bid

The Procuring Entity, **Philippine Ports Authority** invites Bids for the **Restoration/Improvement and Repainting of VTMS Radar Station 2 Facility at Corregidor Island, Cavite** with Project Identification Number **HO-INFRA-PPDD-23-0055**.

The **Restoration/Improvement and Repainting of VTMS Radar Station 2 Facility at Corregidor Island, Cavite** is for the construction of Works, as described in Section VI (Specifications).

## 2. Funding Information

2.1. The **Philippine Ports Authority** through the source of funding as indicated below for **CY 2023** in the amount of **₱ 1,353,759.62**

2.2. The source of funding is:

**PPA Corporate Fund.**

## 3. Bidding Requirements

The Bidding for the Project shall be governed by all the provisions of RA No. 9184 and its 2016 revised IRR, including its Generic Procurement Manual and associated policies, rules and regulations as the primary source thereof, while the herein clauses shall serve as the secondary source thereof.

Any amendments made to the IRR and other GPPB issuances shall be applicable only to the ongoing posting, advertisement, or invitation to bid by the BAC through the issuance of a supplemental or bid bulletin.

The Bidder, by the act of submitting its Bid, shall be deemed to have inspected the site, determined the general characteristics of the contracted Works and the conditions for this Project, such as the location and the nature of the work; (b) climatic conditions; (c) transportation facilities; (c) nature and condition of the terrain, geological conditions at the site communication facilities, requirements, location and availability of construction aggregates and other materials, labor, water, electric power and access roads; and (d) other factors that may affect the cost, duration and execution or implementation of the contract, project, or work and examine all instructions, forms, terms, and project requirements in the Bidding Documents.

## 4. Corrupt, Fraudulent, Collusive, Coercive, and Obstructive Practices

The Procuring Entity, as well as the Bidders and Contractors, shall observe the highest standard of ethics during the procurement and execution of the contract. They or through an agent shall not engage in corrupt, fraudulent, collusive, coercive, and obstructive practices defined under Annex "I" of the 2016 revised IRR of RA No. 9184 or other integrity violations in competing for the Project.

## **5. Eligible Bidders**

- 5.1 Only Bids of Bidders found to be legally, technically, and financially capable will be evaluated.
- 5.2 The Bidder must have an experience of having completed a Single Largest Completed Contract (SLCC) that is similar to this Project, equivalent to at least fifty percent (50%) of the ABC adjusted, if necessary, by the Bidder to current prices using the PSA's CPI, except under conditions provided for in Section 23.4.2.4 of the 2016 revised IRR of RA No. 9184.

A contract is considered to be "similar" to the contract to be bid if it has the major categories of work stated in the BDS.

- 5.3. For Foreign-funded Procurement, the Procuring Entity and the foreign government/foreign or international financing institution may agree on another track record requirement, as specified in the Bidding Document prepared for this purpose.
- 5.4. The Bidders shall comply with the eligibility criteria under Section 23.4.2 of the 2016 IRR of RA No. 9184.

## **6. Origin of Associated Goods**

There is no restriction on the origin of Goods other than those prohibited by a decision of the UN Security Council taken under Chapter VII of the Charter of the UN.

## **7. Subcontracts**

- 7.1. The Bidder may subcontract portions of the Project to the extent allowed by the Procuring Entity as stated herein, but in no case more than fifty percent (50%) of the Project.

The Procuring Entity has prescribed that:

**Subcontracting is not allowed.**

- 7.2. Subcontracting of any portion of the Project does not relieve the Contractor of any liability or obligation under the Contract. The Supplier will be responsible for the acts, defaults, and negligence of any subcontractor, its agents, servants, or workmen as fully as if these were the Contractor's own acts, defaults, or negligence, or those of its agents, servants, or workmen.

## **8. Pre-Bid Conference**

The Procuring Entity will hold a pre-bid conference for this Project on the specified date and time and either at its physical address and/or through videoconferencing/webcasting as indicated in paragraph 6 of the IB.

## **9. Clarification and Amendment of Bidding Documents**

Prospective bidders may request for clarification on and/or interpretation of any part of the Bidding Documents. Such requests must be in writing and received by the Procuring Entity, either at its given address or through electronic mail indicated in the IB, at least ten (10) calendar days before the deadline set for the submission and receipt of Bids.

## **10. Documents Comprising the Bid: Eligibility and Technical Components**

**10.1** The first envelope shall contain the eligibility and technical documents of the Bid as specified in Section IX. Checklist of Technical and Financial Documents.

**10.2** If the eligibility requirements or statements, the bids, and all other documents for submission to the BAC are in foreign language other than English, it must be accompanied by a translation in English, which shall be authenticated by the appropriate Philippine foreign service establishment, post, or the equivalent office having jurisdiction over the foreign bidder's affairs in the Philippines. For Contracting Parties to the Apostille Convention, only the translated documents shall be authenticated through an apostille pursuant to GPPB Resolution No. 13-2019 dated 23 May 2019. The English translation shall govern, for purposes of interpretation of the bid.

**10.3** A valid PCAB License is required, and in case of joint ventures, a valid special PCAB License, and registration for the type and cost of the contract for this Project. Any additional type of Contractor license or permit shall be indicated in the BDS.

**10.4** A List of Contractor's key personnel (e.g., Project Manager, Project Engineers, Materials Engineers, and Foremen) assigned to the contract to be bid, with their complete qualification and experience data shall be provided. These key personnel must meet the required minimum years of experience set in the BDS.

**10.5** A List of Contractor's major equipment units, which are owned, leased, and/or under purchase agreements, supported by proof of ownership, certification of availability of equipment from the equipment lessor/vendor for the duration of the project, as the case may be, must meet the minimum requirements for the contract set in the BDS.

## **11. Documents Comprising the Bid: Financial Component**

- 11.1.** The second bid envelope shall contain the financial documents for the Bid as specified in Section IX. **Checklist of Technical and Financial Documents.**
- 11.2.** Any bid exceeding the ABC indicated in paragraph 1 of the IB shall not be accepted.
- 11.3.** For Foreign-funded procurement, a ceiling may be applied to bid prices provided the conditions are met under Section 31.2 of the 2016 revised IRR of RA No. 9184.

## **12. Alternative Bids**

Bidders shall submit offers that comply with the requirements of the Bidding Documents, including the basic technical design as indicated in the drawings and specifications. Unless there is a value engineering clause in the BDS, alternative Bids shall not be accepted.

## **13. Bid Prices**

All bid prices for the given scope of work in the Project as awarded shall be considered as fixed prices, and therefore not subject to price escalation during contract implementation, except under extraordinary circumstances as determined by the NEDA and approved by the GPPB pursuant to the revised Guidelines for Contract Price Escalation guidelines.

## **14. Bid and Payment Currencies**

- 14.1.** Bid prices may be quoted in the local currency or tradeable currency accepted by the BSP at the discretion of the Bidder. However, for purposes of bid evaluation, Bids denominated in foreign currencies shall be converted to Philippine currency based on the exchange rate as published in the BSP reference rate bulletin on the day of the bid opening.
- 14.2.** *Payment of the contract price shall be made in:*  
**Philippine Pesos.**

## **15. Bid Security**

- 15.1.** The Bidder shall submit a Bid Securing Declaration or any form of Bid Security in the amount indicated in the BDS, which shall be not less than the percentage of the ABC in accordance with the schedule in the BDS.
- 15.2.** The Bid and bid security shall be valid until **One Hundred Twenty (120) days from the date set for Bid Opening.** Any bid not accompanied by an acceptable bid security shall be rejected by the Procuring Entity as non-responsive.

**16. Sealing and Marking of Bids**

Each Bidder shall submit one copy of the first and second components of its Bid.

The Procuring Entity may request additional hard copies and/or electronic copies of the Bid. However, failure of the Bidders to comply with the said request shall not be a ground for disqualification.

If the Procuring Entity allows the submission of bids through online submission to the given website or any other electronic means, the Bidder shall submit an electronic copy of its Bid, which must be digitally signed. An electronic copy that cannot be opened or is corrupted shall be considered non-responsive and, thus, automatically disqualified.

**17. Deadline for Submission of Bids**

The Bidders shall submit on the specified date and time and either at its physical address or through online submission as indicated in paragraph 7 of the IB.

**18. Opening and Preliminary Examination of Bids**

18.1. The BAC shall open the Bids in public at the time, on the date, and at the place specified in paragraph 9 of the IB. The Bidders' representatives who are present shall sign a register evidencing their attendance. In case videoconferencing, webcasting or other similar technologies will be used, attendance of participants shall likewise be recorded by the BAC Secretariat.

In case the Bids cannot be opened as scheduled due to justifiable reasons, the rescheduling requirements under Section 29 of the 2016 revised IRR of RA No. 9184 shall prevail.

18.2. The preliminary examination of Bids shall be governed by Section 30 of the 2016 revised IRR of RA No. 9184.

**19. Detailed Evaluation and Comparison of Bids**

19.1. The Procuring Entity's BAC shall immediately conduct a detailed evaluation of all Bids rated "passed" using non-discretionary pass/fail criteria. The BAC shall consider the conditions in the evaluation of Bids under Section 32.2 of 2016 revised IRR of RA No. 9184.

19.2. If the Project allows partial bids, all Bids and combinations of Bids as indicated in the BDS shall be received by the same deadline and opened and evaluated simultaneously so as to determine the Bid or combination of Bids offering the lowest calculated cost to the Procuring Entity. Bid Security as required by ITB Clause 16 shall be submitted for each contract (lot) separately.



**19.3** In all cases, the NFCC computation pursuant to Section 23.4.2.6 of the 2016 revised IRR of RA No. 9184 must be sufficient for the total of the ABCs for all the lots participated in by the prospective Bidder.

**20. Post Qualification**

Within a non-extendible period of five (5) calendar days from receipt by the Bidder of the notice from the BAC that it submitted the Lowest Calculated Bid, the Bidder shall submit its latest income and business tax returns filed and paid through the BIR Electronic Filing and Payment System (eFPS), and other appropriate licenses and permits required by law and stated in the BDS.

**21. Signing of the Contract**

The documents required in Section 37.2 of the 2016 revised IRR of RA No. 9184 shall form part of the Contract. Additional Contract documents are indicated in the BDS.

***SECTION III***

***BID DATA SHEET***

## Bid Data Sheet

ITB Clause			
5.2	For this purpose, contracts similar to the Project refer to contracts which have the same Major Categories of Works which shall be:		
	Description/Clarification	Unit of Measure	Quantity (at least)
	1. Construction of Building	sq.m.	24.00
7.1	Portion of Works allowed to be subcontracted:  Subcontracting is not allowed	Maximum Percentage allowed to be subcontracted:  Subcontracting is not allowed	
10.3	For Joint Venture:  Special PCAB License		
10.4	The key personnel must meet the required minimum years of experience set below:		
	Key Personnel	General Experience	Relevant Experience (Minimum)
	a. Project Manager  b. Project Engineer  c. Materials Engineer I  d. Construction Safety and Health Officer  e. Foreman		Five (5) years  Three (3) years  One (1) year  One (1) year  Five (5) years

10.5	<i>The minimum major equipment requirements are the following:</i>
	<b>Please refer to Section VIII, Annex 3 Minimum Major Equipment Requirements</b>
12	<i>Value Engineering Clause:</i> <b>Not Allowed</b>
15.1	The bid security shall be in the form of a Bid Securing Declaration or any of the following forms and amounts:  a. The amount of not less than ₱ 27,075.19, if bid security is in cash, cashier's/manager's check, bank draft/guarantee or irrevocable letter of credit;  b. The amount of not less than ₱ 67,687.98, if bid security is in Surety Bond.
16	Each bidder shall submit one (1) original and six (6) copies of the Technical and Financial Proposals, properly labelled, book-bound, with hard cover and corresponding index tabs. Failure to comply with the requirements is a ground for the automatic disqualification of the bidder.
19.2	<i>Partial bids:</i> <b>Not Allowed</b>
20	<i>Other appropriate licenses and permits required:</i> <b>None</b>
21	<i>Other contract documents are as follows:</i>  <i>Construction Schedule and S-Curve, Manpower Schedule, Construction Methods, Equipment Utilization Schedule, Construction Safety and Health Program approved by the Department of Labor and Employment and PERT/CPM or other acceptable tools of project scheduling.</i>

## **SECTION IV**

# **GENERAL CONDITIONS OF CONTRACT**

## **1. Scope of Contract**

This Contract shall include all such items, although not specifically mentioned, that can be reasonably inferred as being required for its completion as if such items were expressly mentioned herein. All the provisions of RA No. 9184 and its 2016 revised IRR, including the Generic Procurement Manual, and associated issuances, constitute the primary source for the terms and conditions of the Contract, and thus, applicable in contract implementation. Herein clauses shall serve as the secondary source for the terms and conditions of the Contract.

This is without prejudice to Sections 74.1 and 74.2 of the 2016 revised IRR of RA No. 9184 allowing the GPPB to amend the IRR, which shall be applied to all procurement activities, the advertisement, posting, or invitation of which were issued after the effectivity of the said amendment.

## **2. Sectional Completion of Works**

If sectional completion is specified in the Special Conditions of Contract (SCC), references in the Conditions of Contract to the Works, the Completion Date, and the Intended Completion Date shall apply to any Section of the Works (other than references to the Completion Date and Intended Completion Date for the whole of the Works).

## **3. Possession of Site**

3.1. The Procuring Entity shall give possession of all or parts of the Site to the Contractor based on the schedule of delivery indicated in the SCC, which corresponds to the execution of the Works. If the Contractor suffers delay or incurs cost from failure on the part of the Procuring Entity to give possession in accordance with the terms of this clause, the Procuring Entity's Representative shall give the Contractor a Contract Time Extension and certify such sum as fair to cover the cost incurred, which sum shall be paid by Procuring Entity.

3.2. If possession of a portion is not given by the above date, the Procuring Entity will be deemed to have delayed the start of the relevant activities. The resulting adjustments in contract time to address such delay may be addressed through contract extension provided under Annex "E" of the 2016 revised IRR of RA No. 9184.

## **4. The Contractor's Obligations**

The Contractor shall employ the key personnel named in the Schedule of Key Personnel indicating their designation, in accordance with ITB Clause 10.3 and specified in the BDS, to carry out the supervision of the Works.

The Procuring Entity will approve any proposed replacement of key personnel only if their relevant qualifications and abilities are equal to or better than those of the personnel listed in the Schedule.

## **5. Performance Security**

- 5.1. Within ten (10) calendar days from receipt of the Notice of Award from the Procuring Entity but in no case later than the signing of the contract by both parties, the successful Bidder shall furnish the performance security in any of the forms prescribed in Section 39 of the 2016 revised IRR.
- 5.2. The Contractor, by entering into the Contract with the Procuring Entity, acknowledges the right of the Procuring Entity to institute action pursuant to RA No. 3688 against any subcontractor be they an individual, firm, partnership, corporation, or association supplying the Contractor with labor, materials and/or equipment for the performance of this Contract.

## **6. Site Investigation Reports**

The Contractor, in preparing the Bid, shall rely on any Site Investigation Reports referred to in the SCC supplemented by any information obtained by the Contractor.

## **7. Warranty**

- 7.1. In case the Contractor fails to undertake the repair works under Section 62.2.2 of the 2016 revised IRR, the Procuring Entity shall forfeit its performance security, subject its property(ies) to attachment or garnishment proceedings, and perpetually disqualify it from participating in any public bidding. All payables of the GOP in his favor shall be offset to recover the costs.
- 7.2. The warranty against Structural Defects/Failures, except that occasioned-on force majeure, shall cover the period from the date of issuance of the Certificate of Final Acceptance by the Procuring Entity. Specific duration of the warranty is found in the SCC.

## **8. Liability of the Contractor**

Subject to additional provisions, if any, set forth in the SCC, the Contractor's liability under this Contract shall be as provided by the laws of the Republic of the Philippines.

If the Contractor is a joint venture, all partners to the joint venture shall be jointly and severally liable to the Procuring Entity.

## **9. Termination for Other Causes**

Contract termination shall be initiated in case it is determined prima facie by the Procuring Entity that the Contractor has engaged, before, or during the implementation of the contract, in unlawful deeds and behaviors relative to contract acquisition and implementation, such as, but not limited to corrupt, fraudulent, collusive, coercive, and obstructive practices as stated in ITB Clause 4.

**10. Dayworks**

Subject to the guidelines on Variation Order in Annex "E" of the 2016 revised IRR of RA No. 9184, and if applicable as indicated in the SCC, the Dayworks rates in the Contractor's Bid shall be used for small additional amounts of work only when the Procuring Entity's Representative has given written instructions in advance for additional work to be paid for in that way.

**11. Program of Work**

11.1. The Contractor shall submit to the Procuring Entity's Representative for approval the said Program of Work showing the general methods, arrangements, order, and timing for all the activities in the Works. The submissions of the Program of Work are indicated in the SCC.

11.2. The Contractor shall submit to the Procuring Entity's Representative for approval an updated Program of Work at intervals no longer than the period stated in the SCC. If the Contractor does not submit an updated Program of Work within this period, the Procuring Entity's Representative may withhold the amount stated in the SCC from the next payment certificate and continue to withhold this amount until the next payment after the date on which the overdue Program of Work has been submitted.

**12. Instructions, Inspections and Audits**

The Contractor shall permit the GOP or the Procuring Entity to inspect the Contractor's accounts and records relating to the performance of the Contractor and to have them audited by auditors of the GOP or the Procuring Entity, as may be required.

**13. Advance Payment**

The Procuring Entity shall, upon a written request of the Contractor which shall be submitted as a Contract document, make an advance payment to the Contractor in an amount not exceeding fifteen percent (15%) of the total contract price, to be made in lump sum, or at the most two installments according to a schedule specified in the SCC, subject to the requirements in Annex "E" of the 2016 revised IRR of RA No. 9184.

**14. Progress Payments**

The Contractor may submit a request for payment for Work accomplished. Such requests for payment shall be verified and certified by the Procuring Entity's Representative/Project Engineer. Except as otherwise stipulated in the SCC, materials and equipment delivered on the site but not completely put in place shall not be included for payment.



**15. Operating and Maintenance Manuals**

- 15.1. If required, the Contractor will provide "as built" Drawings and/or operating and maintenance manuals as specified in the SCC.**
- 15.2. If the Contractor does not provide the Drawings and/or manuals by the dates stated above, or they do not receive the Procuring Entity's Representative's approval, the Procuring Entity's Representative may withhold the amount stated in the SCC from payments due to the Contractor.**

## **SECTION V**

### **SPECIAL CONDITIONS OF CONTRACT**

## Special Conditions of Contract

GCC Clause	
2	<b>Sectional Completion:</b>  <b>None</b>
3.1	<b>The Procuring Entity shall give possession of all parts of the Site to the Contractor upon commencement of the project.</b>
6	<b>Site Investigation Report:</b>  <b>None</b>
7.2	<b>Permanent structures: Fifteen (15) years</b>  <b>Buildings of types 4 and 5 as classified under the National Building Code of the Philippines and other structures made of steel, iron, or concrete which comply with relevant structural codes (e.g., DPWH Standard Specifications), such as, but not limited to, steel/concrete bridges, flyovers, aircraft movement areas, ports, dams, tunnels, filtration and treatment plants, sewerage systems, power plants, transmission and communication towers, railway system, and other similar permanent structures</b>
10	<b>No dayworks are applicable to the contract.</b>
11.1	<b>The Contractor shall submit the Program of Work to the Procuring Entity's Representative within ____ days of delivery of the Notice of Award.</b>
11.2	<b>The amount to be withheld for late submission of an updated Program of Work is _____.</b>
13	<b>The provision on advance payments or mobilization fees in the terms and conditions of all contracts/ purchase orders/ job orders for goods, services and infrastructure projects that will be signed or executed shall henceforth be excluded.</b>
14	<b>No further instructions.</b>
15.1	<b>The date by which operating and maintenance manuals are required is _____.</b>  <b>The date by which "as built" drawings are required is _____.</b>
15.2	<b>The amount to be withheld for failing to produce "as built" drawings and/or operating and maintenance manuals by the date required is _____.</b>

**SECTION VI**  
**TECHNICAL SPECIFICATIONS**

**DIVISION     01     :     DEMOLITION AND REMOVAL WORKS**

**DESCRIPTION**

The work includes the furnishing of all labor, materials and equipment required to carry out the demolition and removal of old structures, port accessories and obstructions including demolition of miscellaneous concrete curbs etc., as required for the execution of the Contract.

The Contractor shall submit the proposed methodology or procedure of demolition work with detailed drawings and calculations, if necessary, to the Engineer for approval, before the execution of the Works.

The Contractor shall keep all pavements and landing areas to and from the site of the disposal area clean and free of mud, dirt and debris during and after the execution of disposal. Disposal of debris and materials shall be as directed by the Engineer.

**GENERAL PROVISIONS**

1. The Contractor shall be deemed to have satisfied himself of the site conditions, and to have included in his unit prices provision for all risks that may arise during or in connection with the work.
2. The demolition shall be carried out by approved methods and equipment such as concrete breakers, gas-cutters, hydraulic jacks, compressed air disintegrators, etc., however, no blasting shall be used unless approved in writing by the Engineer and after obtaining the written permission of the concerned authorities.
3. The Contractor shall provide suitable equipment, skilled labor and appropriate temporary works such as scaffoldings to ensure safety in his demolition works as well as in the adjacent area.
4. Contractor shall demolish all the structural members above the level on which the subsequent and permanent works under this Contract will begin. To this end, the temporary construction works such as excavation shall be conducted by the Contractor.
5. Materials coming from the demolition works, except general earth, shall remain the property of the Procuring Entity, the designated part of which shall be stored by the Contractor at places specified by the Engineer/ Accepting authority. Receiving copy of Turn-Over Report shall be provided.
6. In case of demolition of wharf deck and platform, the contractor shall ensure that no debris will be remained/deposited at seabed.

**INTERFERENCE WITH PORT OPERATIONS**

During the execution of the work, the Contractor shall not interfere with the shipping, navigation, and other traffic in the port.

The Contractor shall make arrangements with the operations people on the schedule of demolition and related works to keep port operation activities undisturbed at all times.

Prior to commencement of the demolition works, the Contractor shall inform/announce to port users the schedule of disconnection of utilities.

## **STORAGE AND DUMPING**

Prior to the commencement of the demolition work, the Engineer shall submit to the Contractor a list in which all the materials to be salvaged and overhauled, as property of PPA, and the description of the location of their storage. Materials embedded in concrete units shall not be salvaged.

The Contractor shall separate materials to be salvaged from debris. Salvaged materials shall be loaded, transported and unloaded by the Contractor at the specified locations.

The Contractor may dump debris or extracted rocks on land areas but out of the site, which areas shall be procured and prepared at his own expense. In this case, safety measures shall be undertaken in the transporting, unloading, covering and others as requested by the Engineer.

The approximate distance of the disposal site from the project site is about five (5) kms., as designated by the PMO thru the implementing office.

## **EXECUTION**

1. Prior to the commencement of demolition works, the alignment of the new construction works to the existing structure shall be checked.
2. The width and alignment of portion of existing structure to be demolished shall be marked by paint.
3. With these lines as guides, concrete shall be broken and reinforcing bars cut, such that panels or portions of the structure can be lifted out for disposal elsewhere outside of the operational work area.
4. Rocks removed from existing slope protection shall be stored for re-use in new construction.
5. Demolish pavements, curbs, fences, utilities, services, navigation aids and the likes as determined in the field for each project and as shown in the drawings or as directed by the Engineer.
6. Materials coming from the demolition works shall be properly disposed of by the Contractor.

## **SAFETY**

During the course of survey and clearing, any obstacles which are recognized and seemed to be explosive or hazardous to workers shall be removed from the site by the proper Authority.

At the end of each day's work, the Contractor shall keep the workplace in safe condition and clean so that no part is in danger of falling or creating hazard to personnel or equipment.

**DIVISION    02    :    METAL WORKS**

**1. SCOPE OF WORK**

The work includes the furnishing and installation of miscellaneous metal necessary to complete the work in accordance with this specification unless required otherwise on the plans.

**2. GENERAL PROVISIONS**

The AISC Specification for the Design, Fabrication and Erection of Structural Steel for Buildings, Association of Structural Engineers of the Philippines (ASEP) Handbook of Structural Steel Shapes and Sections shall govern the Work. Welding shall be in accordance with the AWS Code and as herein specified or any other welding standard, approved by the Engineer.

**Certification:** Two (2) certified copies of mill test reports including names and locations of mills and shops shall be furnished for all structural steel.

**Responsibility for Errors:** The Contractor shall be responsible for all errors of detailing, fabrication and for the correct fitting of the structural members.

**Storage of Materials:** The materials shall be stored out of contact with the ground in such manner and location as will minimize contamination and deterioration.

**3. MATERIALS**

Structural steel shall conform to ASTM A 36. All materials shall be of new stock, free from surface imperfections and shall conform to the applicable ASTM, API Specifications or other equivalent standards.

**Steel Plates, Bars and Rods** – Plates, bars and rods shall be local standard commercial steel of sizes as indicated on the plans and approved by the Engineer.

**Fastener and Anchor Bolts** – Fasteners, anchor bolts necessary for the installation of the work shown on the plans shall be of a standard commercial grade approved by the Engineer.

**Bolts, Nuts and Washers** – Bolts, nuts and washers shall be local standard commercial grade of size as indicated on the plans conforming to ASTM A 325 or AASHTO M164.

**Welding** – Employ only welding equipment electrodes welding wire and fluxes capable of producing satisfactory welds when used by a qualified welder or welding operator using qualified welding procedures. It shall conform to this AWS D1.1-183, E70XX Series.

**4. DELIVERY OF MATERIALS**

Deliver anchor bolts and other anchorage devices which are embedded in cast-in-place concrete construction to the project site in time to be installed before the start of work.

Provide setting drawings, templates, and directions for installation of anchor bolts and other devices.

Number in accordance with shop drawings the materials tested and approved by the Engineer before delivery to the site. Prepare a list showing number, size, quality and quantities of materials.

Transport materials in accordance with material list and transportation. Schedule approved by the Engineer.

Protect materials to prevent damage during transportation. Package and label small parts such as bolts or rivets.

## **5. FABRICATION**

Fabricate structural steel in the shop to the greatest extent possible for transporting in accordance with the AISC Building Code and ASEP Handbook with the modification and additional specified in this section.

The Contractor shall verify all measurements in the field, submit shop drawings to the Engineer showing sizes, gauges, detailed of construction, method of assembly and installation.

Fabrication of work shall not commence until all shop drawings are approved by the Engineer.

Shop connections: As approved by the Engineer.

- a. Provide bolted or welded connections as shown on the Drawings or as approved by the Engineer.
- b. Use high strength threaded fasteners for bolted connections, except where standard threaded fasteners are permitted.

High strength bolted construction assembly shall be tightened in accordance with Specification for Structural Joints, AISC.

## **6. FIELD ERECTION**

Steel erection shall conform to the requirements of this specification and to the applicable requirements of AISC "Specification for the Design, Fabrication and Erection of Structural Steel for Buildings", and the AISC "Code of Structural Practice for Steel Buildings and Bridges".

Set and wedge or shim loose bearing plates.

Erect individual pieces not deviating from vertical level and alignment more than 1 in 500.



## **7. FIELD ASSEMBLY**

Assemble structural steel frames accurately to the line and elevations indicated within the specified tolerance.

Align and adjust accurately various members forming parts of a complete frame or structure before fastening.

Fasten splices of compression members after the abutting surfaces have been brought completely into contact.

Clean bearing surfaces and surfaces in permanent contact, of rust and scale before members are assembled.

Splices shall be permitted only where indicated.

Bolt and weld field connections as specified in "Fabrication".

Remove weld backing strips from welds designated for ultrasonic testing.

Remove run-off tabs and grind surfaces when requested by the Engineer.

Clean weld splatter from surfaces contacted.

Field correction of fabrication by gas cutting is not permitted on any major member in the structural framing without prior approval of the Engineer.

Mark structural steel members of high strength steels to permit visual verification of the grade of steel used.

## **8. PAINING**

Shop Paintings – Except for galvanized surfaces and items to be encased in concrete, clean ferrous metal surfaces shall be given one coat of red lead or zinc chromate primer. An additional coat shall be applied to surface that will be concealed or inaccessible for finish painting.

## **9. REPAIR OF DAMAGED COATING**

Coated metal damaged in the process of work shall be repaired in 2 manners approved by the Engineer.

## **10. LIGHT STEEL FRAMING SYSTEM**

Light steel framing system will be used for ceiling assemblies of gypsum ceiling board. Provide steel materials for metal support system galvanized coating, ASTM A525; aluminum coating, ASTM A463 on a 55% aluminum-zinc coating. Materials for attachment of gypsum board (suspended and furred ceiling systems) shall conform with ASTM C645. Installation shall conform with ASTM C754, except that framing members shall be 400mm o.c.b.w. unless otherwise indicated in the plans.

## **11. SUSPENSION SYSTEM**

Suspension system for mineral fiber acoustical lay-in panel and fiberglass ceiling board shall be concealed, direct hung, upward access. Hangers and adhesive shall be recommended by the manufacturers and approved by the Engineer.

Install the suspension system in accordance with ASTM C636, and the following additional requirements:

- a. Ceiling framing shall consist of 25 mm T-runner sections suspended plumb from structural slab on frame by hanger wires on straps.
- b. Space hangers 1.2 meters on centers each direction. Hangers shall be laid out for each individual room or space. Install additional hangers where required to support the framing around beams, ducts, columns and other penetrations through the ceiling. Hanger wires shall be wrapped around the reinforcing bars of the supporting concrete-slab construction with twists before concrete is placed or shall be shaped into a 100 mm diameter loop and embedded at least 50 mm in the concrete or shall be attached to approved inserts.
- c. Keep main runners and carrying channels clear of abutting walls and partitions. Provide at least two main runners for each ceiling span.
- d. The acoustical board shall be placed in between T-runners in full contact with the metal frames. The ceiling system shall be leveled and squared with no sign of deflection.

## **12. SPANDREL METAL CEILING**

For exterior ceiling, use 0.4 mm metal thick, Rib 2 Spandrel 165, white color as manufactured by DN Steel or equivalent.

## **13. METAL TOILET PARTITIONS**

Toilet partitions shall be the flush-metal type with sound-deadening cores and baked-enamel finish. The partitions shall be provided complete with all fastening, fittings, and hardware necessary for a satisfactory installation.

Steel shall be cold-rolled and zinc-coated steel for face plated doors, panels, and pilasters shall be stretcher-leveled of standard flatness. Concealed reinforcement may be hot-rolled or cold-rolled steel.

Toilet partitions shall be floor-supported, with pilasters extending from the floor to the top of the panels. Panels and doors shall be gauge 20, approximately 1.5m high, and their bottom edges shall be approximately 250 mm above the floor, unless otherwise indicated in the drawings. The width, from center to center of dividing partitions, shall be as indicated in the drawings.

The work shall be secured to contiguous construction in a rigid and substantial manner, straight and plumb. Evidence of drilling in walls shall be concealed in the finished work.

Hardware shall be adjusted for proper alignment, and hinges shall be set to hold the doors about 30 degrees when unlatched. After installation, all exposed surfaces shall be thoroughly cleaned, and all damaged work shall be restored to its original condition or replaced with new work. The exposed heads of unfinished steel bolts and screws shall be neatly painted to match the color of adjoining partition surfaces, if required.

#### **14. URINAL SCREEN**

The urinal screen shall be wall hung and to be secured with a minimum of three wall stirrup brackets. It shall have a baked enamel finish.

Secure the work to contiguous construction straight and plumb. In the finished work, conceal evidence of drilling in walls. Screws and bolts shall be stainless steel. After installation, thoroughly clean exposed surface and restore damaged.

**DIVISION    03    :    WELDED STRUCTURAL STEEL**

**1. Description**

This work shall consist of the joining of structural steel members with welds of the type, dimensions, and design shown on the plans and in accordance with this Specification.

It is the intent of this specification to provide for work of a quality comparable to that required under the Standards Specifications for Welded Highway and Railway Bridges of the American Welding Society. In case of dispute or for situations not adequately provided for in this Specification, those designated Standard Specifications shall be considered as the final authority and shall govern except as amended by the Special Provisions.

Welding of structural Steel shall be done only when shown on the Plans or authorized in writing by the Engineer.

**2. Material Requirements**

Steel base metal to be welded shall be open-hearth or electric furnace steel conforming to AASHTO M 183.

All arc-welding electrodes shall conform to the requirements of American Welding Society Specifications. Electrodes shall be of classification numbers E7016, E7018 or E7028 as required for the positions, type of current and polarity, and other conditions of intended use, and to conform to any special requirements indicated on the plans.

Filler material to be used in the repair or strengthening of old structures or for joining new parts to existing steel members, shall be adopted to the material to be welded and may depart from the foregoing requirements only if agreed by the Engineer.

**3. Construction Requirements**

**a) Equipment**

**1) General**

All items of equipment for welding and gas cutting shall be so designed and manufactured and in such condition as to enable qualified welders to follow the procedures and attain the results prescribed in this specification

**2) Arc-Welding Equipment**

Welding generators and transformers shall be designed expressly for welding. They shall be capable of delivering steady currents adjustable through a range ample for the work requirements. They shall respond automatically and quickly to changes in power requirements due to variations in arc length and shall deliver full current promptly on striking an arc.

Welding cable shall have sufficient conductivity to avoid overheating and inadequate current at the arc and shall be effectively insulated against welding circuit voltage. Earth or ground connections and circuits shall be secured and adequate to carry the welding currents.

Electrode holders shall grip the electrode firmly and with good electrical contact. Approved automatic welding heads may be used, with suitable auxiliary handling equipment to provide automatic instead of manual control of electrode and welding arc.

### 3) Gas-Cutting Equipment

Torches and tips shall be of proper size and type of the work at hand. Suitable regulators shall afford the welder complete control over the pressure and rate of flow of each gas.

### 4) Protective Equipment

All personnel protective equipment shall conform to the American Standard Association Code for such equipment.

The contractor shall enforce the use of approved accessories necessary for the protection and convenience of the welders and for the proper and efficient execution of the work.

Suitable protection against the light of the arc shall be maintained by the contractor when arc-welding operation might be viewed within harmful range by persons other than the actual welders and inspectors.

## b) Welding

### 1) General

Welding shall be performed by the metal-arc process using the electrodes specified with either direct or alternating current.

Surfaces to be welded shall be smooth, uniform and free from fins, tears and other defects which would adversely affect the quality of the weld. Edges of the material shall be trimmed by machining, chipping, grinding or machine gas-cutting to produce a satisfactory welding edge wherever such edge is thicker than: 13mm for sheared edge of material; 16mm for toes of angles or rolled shapes (other than twice flange sections); 25mm for universal mill plate or edges of flange sections.

The width of root face used, shall be not more than 1.5mm for parts less than 10mm in thickness nor more than 3mm for parts 10mm or more in thickness.

Butt welds shall be proportioned so that their surface contours will lie in gradual transition curves. For butt welded joints between base metal parts of unequal thickness, a transition shall be provided on a slope or level not greater than 1 in 2.5 to join the offset surfaces. This transition may be provided by sloping the surface of the weld material or beveling the thicker part or by combination of these two methods.

Surfaces to be welded shall be free from loose scale, slag, rust grease or other material that will prevent proper welding. Scale mill that withstands vigorous wire brushing or a light film of drying oil or rust inhibitive coating may remain.

### 2) Welders

All welding shall be done by approved competent and experienced and fully qualified welders.

### 3) Preparation of Materials for Welding

Dimensional tolerance, straightness and flatness of the structure shapes and plates shall be within the limits prescribed in the Specification.

Structural steel which is to be welded shall preferably not be painted until all welding is completed.

Preparation of edges by gas-cutting shall, wherever practicable, be done by machine gas-cutting. Machine gas-cutting edges shall be substantially as smooth and regular as those produced by edge planing and shall be left free of slag. Manual gas cutting shall be permitted only where machine gas-cutting is not practicable and with the approval of the Engineer. The edge resulting from manual gas cutting shall be inspected and smoothed with special care. All re-entrant corners shall be filleted to a radius at least 19mm. The cut lines shall not extend beyond the fillet and all cutting shall follow closely the line prescribed.

### 4) Assembly

The parts to be joined by fillet welds shall be brought into a close contact as practicable, and no event shall be separated more than 5mm. If the separation is 1.5mm or greater, the leg of the fillet weld shall be increased by the amount of separation. The separation between faying surfaces of lap joints and of butt joints landing on a backing structure shall not exceed 1.5mm. The fits of joints which are not sealed by welds throughout their length shall be sufficiently close to exclude water after painting. Where irregularities in rolled shape or plates, after straightening, do not permit contact within the above limits, the procedure necessary to bring the material within these limits shall be subject to the approval of the Engineer.

Cutting parts to be joined by butt welds shall be carefully aligned. Where the parts are effectively restrained against bending due to eccentricity or alignment, a maximum offset of 10 percent of the thickness of the thinner part joined, but in no case more than 3mm, may be permitted as a departure from the theoretical alignment. In connecting alignment in such cases, the parts shall not be drawn into a greater slope than two (2) degrees (1 in 30). Measurement of offset shall be between centerline of parts unless otherwise shown on the plans.

When parts abutting edge to edge differ in thickness, the joint shall be of such form that the slope of either surface through the transition zone does not exceed 1 in 2.5, the thicker part being beveled, if necessary.

Members to be welded shall be brought into correct alignment and held in position by bolts, clamps, wedges, guy lines, strut and other suitable devices or tack welds until welding has been completed. The use of jigs and fixtures is recommended where applicable. Such fastening devices as may be used shall be adequate to insure safety.

Plug and slot welds may be used to transmit shear in a lap joint or to prevent the buckling or separation of lapped parts.

The diameter of the hole for a plug weld shall not be less than the thickness of the part containing it plus 8mm nor shall it be greater than 2.25 times the thickness of the weld.

The minimum center spacing of plug welds shall be four times the diameter of the hole.

The length of the slot shall be semicircular or shall have the corners rounded to a radius not less than the thickness of the part containing it plus 8mm nor shall it be greater than 2.25 times the thickness of the weld.

The end of the slot shall be semicircular or shall have the corners rounded to a radius not less than the thickness of the part containing it, except those ends which extend to the edge of the part.

The minimum spacing of lines of slot welds in a direction transverse to their length shall be 4 times the width of the slot. The minimum center to center spacing in a longitudinal direction on any line shall be 2 times the length of the slot.

The thickness of plug or slot welds in material 16mm or less in thickness shall be equal to the thickness of the material. In material over 16mm in thickness, it shall be at least one-half the thickness of the material but not less than 16mm.

Tack welds, located where the final welds will later be made, shall be subject to the same quality requirements as the final weld. Tack welds shall be as small as practicable and where encountered in the final welding, shall be cleaned and fused thoroughly with the final weld. Defective, cracked or broken tack welds shall be removed before final welding.

Members or component parts of structures shall be assembled and matchmarked prior to erection to insure accurate assembly and adjustment of position on final erection. Painted assembly marks shall be removed from any surface to be welded.

**DIVISION 04 : PAINTING WORKS**

**1. GENERAL**

The work shall include all labor, materials, equipment, plant and other facilities and the satisfactory performance of all works necessary to complete all field painting and as specified herein. All paints and coatings shall be applied by painting subcontractors and workmen approved by the Engineer.

**2. SCOPE**

The following surfaces to be painted except where otherwise specified or shown:

- a. Above ground piping and other metal surfaces.
- b. All exposed concrete.
- c. All structural and miscellaneous metal.
- d. All equipment furnished without factory finished surfaces.
- e. All exposed steel mullions, tubular frames, door frames, steel sash, and metal windows.
- f. All sheet metal and ferrous metal trim.
- g. Interior and exterior surfaces of the building including all concrete block masonry.

The following surfaces are not to be painted:

- a. Ferrous metal having approved plating or factory paint finishes.
- b. Non-ferrous metals, unless otherwise noted or indicated; galvanized metal shall not be considered a non-ferrous metal.
- c. Equipment with factory finished surfaces unless otherwise noted.

No concrete, wood, metal or any other surfaces requiring protection shall be left unpainted even though not specifically defined herein.

**3. RIGHT OF REJECTION**

Exterior painting or interior finishing shall be done under conditions which shall not jeopardize the appearance or quality of the painting or finishing in any way. The Engineer shall have the right to reject all material or work that is unsatisfactory, and require the replacement of either or both at the expense of the Contractor.

**4. PROTECTION OF THE WORK**

The Contractor shall endeavor to protect the work of others during the time painting work is in progress. The Contractor shall be responsible for any and all damage to any other work in the course of his painting job.

Protective coverings shall be used to protect floors, fixtures, and equipment while painting. Care shall be exercised to prevent paint being spattered onto surfaces which are not to be painted.

**5. WORKMANSHIP**

All painting work shall be first class and in accordance with the best standard practices of the trade.



The Contractor shall examine carefully all surfaces to be painted and before beginning any of his work shall make sure that the work of other trades has been installed in a workman like condition ready to receive paint. Metal surfaces shall be clean, dry and free from mill scale, rust, grease, oil or any other substance which could affect the quality of the painting.

Paint shall be applied at the proper consistency and each coat shall be brushed evenly free of brush marks, sags, and runs. Care shall be exercised to avoid lapping of paint on glass or hardwares. Paint shall be sharply applied to required lines. Finished paint surfaces shall be free from defects or blemishes. Surfaces from which such paint cannot be removed satisfactorily shall be painted or repainted, as required to produce a finish satisfactory to the Engineer.

Succeeding paint coatings shall be applied only when the previous coat is hard and dry.

All painting materials shall be used in strict accordance with manufacturers directions, spread or flowed on smoothly with proper film thickness and without runs, sags, skips or other defects.

**6. STORAGE OF MATERIALS**

All painting materials and equipment not for immediate use shall be stored in a room approved by the Engineer for that purpose. The receiving, opening and mixing of all paint shall be removed from the premises at the end of each day's work, or stored in metal containers with metal covers.

**7. PREPARATION OF PAINT**

Paint containers shall be delivered to the job site in manufacturer's unopened containers and shall be opened only when required for use. Paint shall be mixed only in the designated room or space in the presence of the Engineer or his representative. Paint shall be thoroughly stirred or agitated to uniformly smooth consistency suitable for proper application. Unless otherwise specified

or approved, no materials shall be reduced, changed, or used except in accordance with manufacturer's label or tag on container. In all cases, paint shall be prepared and handled in a manner to prevent deterioration and inclusion of foreign matter.

**8. CLEAN-UP**

Upon completion of his work, the Contractor shall remove all surplus materials. All paint spills shall be removed and the entire premises shall be cleaned of all rubbish, and debris, caused by his work. He shall present the work clean and free from blemishes so that it is acceptable in every way. All glass, fixtures and doors shall be cleaned of paint spots and polished, and the job made for occupancy by the owner.

**9. MATERIALS**

- a. **Materials** – The Contractor may substitute other paint materials for those specified in Section 15.12 provided he first receives written approval from the Engineer stating that said proposed substituted materials are equal to that specified and are approved for use. The painting material shall be delivered to job site in original containers properly labeled without evidence of tampering, substitution of contents, or of deterioration. A complete list of materials proposed for use shall be submitted for the Engineer's approval.

- b. **Colors and Samples** – All finish colors shall be as selected by the Owner. In multicoat work using color pigmented paints, each coat shall have sufficient variation of color to easily distinguish it from preceding coat.

Using specified or approved materials, 3 sample panels of each finish, including all coats thereof shall be prepared and submitted for the Owner's approval. Completion work shall match approved colors and samples.

## 10. PREPARATION OF SURFACES

- a. **General** – Except as otherwise specified, surfaces to be painted shall be clean, smooth and dry. The Contractor shall report to the Engineer in writing any surface which cannot be properly prepared for painting. If work is commenced before defects have been reported and corrected, any resulting unsatisfactory finish shall be rectified at no cost to the PPA.
- b. **Concrete and Masonry** – all concrete and masonry surfaces shall be cured thirty days prior to painting. Dirt, dust, oil, grease, efflorescences, loose cement, chalk and other deleterious matter shall be removed and surface roughened when necessary to insure good paint adhesion. the method of surface preparation shall be left to the discretion of the contractor, but results obtained shall be satisfactory to the Engineer. Before application of resin emulsion paint, surfaces shall be prepared in accordance with manufacturer's directions. Before application of oil base or latex paints, surfaces shall be tested for presence of alkali; if alkali is present, neutralized as recommended by the manufacturer of the paint materials to be applied.
- c. **Plaster** – Dirt, dust, loose plaster and other deleterious matter which would prevent good paint adhesion shall be removed. All holes, cracks and depression shall be neatly filled with patching plaster, missed and applied to match existing plaster. Patches shall be sanded flush and smooth and properly sealed before applying prime coat. After priming surfaces, suction spots shall be touched up with additional prime coat material until surfaces evidence a uniform coating. Enamel undercoats on smooth plaster shall be sandpapered by hand (with No. 00 sandpaper) and dusted clean before applying succeeding coat.
- d. **Metal** – Dirt, weld, splatter, rust, scale and other contaminants shall be removed by scrapping, wire brushing and sanding or sandblasting as required. Oil and grease shall be removed with mineral spirits or appropriate solvent. Before painting ferrous metal surfaces, including galvanized ferrous metal, surfaces shall be pretreated with approved phosphoric acid etching cleaner in accordance with manufacturer's directions to produce a chemically clean surface. Unless already performed in accordance with specifications of other sections, abrasions and bare spots in shop prime coatings shall be touched up with metal primer matching the shop coatings. Enamel undercoats shall be sandpapered by hand (with No. 00 sandpaper) and dusted clean before applying succeeding coat.
- e. **Woodwork** – Unless already properly sanded, woodwork shall be sandpapered smooth by hand. Before priming surfaces, knots, pitch pockets and sap streaks shall be thoroughly cleaned of residue and touched up with shellac varnish coating. After priming surface, nail holes, cracks and depressions shall be neatly filled with putty or other approved filler, colored to match required finish. Enamel undercoats shall be sanded by hand (with No. 00 sandpaper) and dusted clean before applying succeeding coat.

## 11. APPLICATION OF PAINT

- a. **General** – All painting and finishing shall be performed by skilled craftsmen. Each coat of paint shall be applied with proper consistency, evenly, free of laps, sags and runs and cut sharply to required lines. Paint shall be applied only under dry and dust free conditions that will insure properly finished surfaces, free of defects and blemishes unless otherwise directed by the Engineer. Paint shall not be applied when temperature is likely to be above 90°F. Sufficient time shall be allowed between application of coats to insure proper drying of the preceding coat. All primer and intermediate coats shall be unscarred and completely integral at

time of application of each succeeding coat. The Engineer shall be notified when each coat has been applied and is ready for inspection; until coat is inspected and approved by the Engineer, no succeeding coats shall be applied. Whenever two coats of a dark colored paint are specified the first coat shall contain sufficient powdered aluminum to act as an indicator for proper coverage when applying the second coat.

- b. **Method of Application** – Paint should be applied by brush, spray, or other application method approved by the Engineer.

c. **Priming and Back Painting**

1. **Priming** – Before installation, all surfaces of millwork which are to be painted shall be primed giving particular attention to sealing of cross-grained surfaces. In all cases, all work shall be primed as soon as possible after delivery to buildings, before or after installation, as required, or in case prefabricated items, at fabricator's shop or mill before shipment, if practicable. Except as otherwise specified, primings shall consists of first coat herein after specified under "Finishes".
2. **Back-Painting** – Woodwork, millwork and casework to be installed against concrete, masonry or plaster shall be back painted with one coat of exterior oil paint.

## 12. PAINING ITEMS

		M A N U F A C T U R E	
		Boysen	Dutch Boy
<u>Architectural Items</u>		<u>Number</u>	<u>Number</u>
a) <u>Exterior Finishes</u>			
1.	<u>On Concrete Walls</u>		
	Two Coats, Concrete	BT01/B715	
	Masonry Paint	B710	A69EXZ
2.	<u>Uprimed Ferrous Metal</u>		
	<u>Including GI Roofing</u>		
	First Coat:		
	Rush inhibitive ferrous		
	Metal primer	B320	20724
	Second Coat:		
	Exterior Enamel	B2501	20-125

3.	<u>On Concrete Block Wall</u>		
	First Coat:		
	Concrete block primer sealer B701		103
4.	Second Coat:		
	Concrete Masonry Paint	B701	55B00
	Third Coat:		
	Concrete Masonry Paint	B701	55B00
	On Wood		
	First Coat:		
	Exterior Wood Primer	B800	25F
	Second Coat:		
	Exterior Enamel	B600	10X
	Third Coat:		
	Exterior Enamel	B600	10X

b. Interior Finishes

Location of the various finishes are listed in the Finish Schedule on the Drawings or else will be confirmed by the PPA.

1)	On primer & coated metal		
	two coats of interior semi-gloss enamel or as indicated in the schedule finish		
2)	<u>On Plaster</u>		
	First Coat:		
	Pigmented Sealer		
	Second Coat:		
	Enamel undercoater	B701	103
	Third Coat:		
3)	<u>On Wood</u>		
	First Coat:		
	Enamel undercoater	B800	.001
	Second Coat:		
	Enamel undercoater	B800	.001
	Third Coat:		
4)	<u>Wood Stain Finish</u>		
	Oil Stain with Filler	B2700	23-11
	Boiled on top coat		
			36-001
5)	<u>Wood Lacquer Finish</u>		
	Wood Paste Filler w/ natural	B60/B1258	23-11
	Oil top coat of lacquer	B60/B1253	68-064

c. Non-Architectural Items

(Piping, Valves, Equipment, etc.)

- 1) Piping, valves, equipment etc. in rooms are to be

painted			
2)	Galvanized pipes & ducts		
	Primer – one coat	B320	70-56
	Finish	B2501/B600	22-101
3)	Black Steel Pipes		
	Primer – one coat	B320	.041
	Finish – one coat	B2501/B600	22-101
4)	Mechanical Items		
a)	Ungalvanized Ferrous Metal		
	Primer – one coat	B320	37-745
	Finish – one coat	B2501/B600	22-101
b)	Galvanized Ferrous Metal		
	Primer – one coat	B320	70-56
	Finish – one coat	B2501/B600	22-101
c)	Submerged Galvanized Ferrous Metal		
	Primer – one coat	B2200	60-709
d)	Buried Miscellaneous Ferrous surface, valves, & flanged joints (excl. pipe)	B2199	
	Primer – one coat	Coal-tar enamel or Match adjacent pipe	

## **DIVISION 05 : ROOFING**

### **1. SCOPE OF WORK**

The work shall include all labor, materials and equipment necessary to install roofing/ceiling materials, complete as shown on the drawings and as specified herein.

### **2. GENERAL REQUIREMENTS**

- a) The work includes the installation of roofing sheets, steel ridge roll, gutter, flashing and all miscellaneous roofing items not specifically noted, but required for the proper execution of the work. Surfaces shall be thoroughly dry and clean, painted with protective coatings and free from any defect that might affect the metalwork.
- b) All miscellaneous roofing items shall be fabricated and installed in accordance with the requirements as specified herein or as indicated in the drawings. The Contractor shall verify all measurements in the field, submit shop drawings to the Engineer showing sizes, gauges, detailed of construction, method of assembly and installation. Fabrication of work shall not commence until all shop drawings are approved by the Engineer.
- c) Roofing/Ceiling materials and accessories shall be carefully handled and stored to prevent damage to the damage to the surface and edges.

### **3. MATERIALS**

- a. Roofing shall be of MILANO type corrugated G.I. sheets or equivalent.
- b. Ridge rolls, fascia, gutters, capping, flashings, fastening devices and all similar items required to complete the roofing installations shall be colorbonded G.I. sheets. Thickness shall be as indicated in the drawings.

### **4. INSTALLATION**

Installation of roofing materials including ridge rolls, roof gutters, flashing and other accessories shall be performed with precise method and a manner in accordance with the specifications, professional skilled experienced and that the roofing materials shall be installed to enable to withstand the wind and rain.

## **DIVISION 06 : ALUMINUM GLASS WINDOW**

### **1. Description**

This item shall consist of furnishing all aluminum glass windows materials, labor, tools and equipment required as shown on the Plans and in accordance with this Specification.

### **2. Material Requirements**

- a) Frame and panel members shall be fabricated from extruded aluminum section true to details with clean, straight, sharply defined profiles and free from defects impairing strength or durability. Extruded aluminum section shall conform to the specification requirements defined in ASTM B 211.
- b) Screws, nuts, washers, bolt, rivets and other miscellaneous fastening devices shall be made of non-corrosive materials such as aluminum, stainless steel, etc.
- c) Hardware for fixing and locking device shall be closely matched to the extruded aluminum section and adaptable to the type and method of opening.
- d) Weatherstrip shall be first class quality flexible vinyl forming an effective seal and without adverse deformation when installed.
- e) Glazing shall conform to the requirements specified in the plan.
- f) Pile weatherstrip shall be silicon treated and free from residual wetting agents made of soft fine hair as on wool, fur, etc.

### **3. Construction Requirements**

For all assembly and fabrication works the cut end shall be true and accurate, free of burrs and rough edges. Cut-outs, recesses, mortising and grinding operations for hard wares shall be accurately made and properly reinforced.

Casement window type shall be provided with two hinges fabricated from extruded aluminum alloy. They shall open on stay arms having adjustable sliding friction shoes to control window panel operations complete with strike plate.

Window panel shall be provided with nylon sheave. Sliding panels shall be suspended with concealed roller overhead tracks with bottom guide pitch outward and slotted for complete drainage. The sliding panels shall be provided with interior handles. That locking device shall be a spring loaded extruded latch that automatically engages special frame hips.

All joints between metal surface and masonry shall be fully caulked.

Weatherstrip shall be furnished on edges at the meeting stiles.

### **4. Shop Finish**

Exposed aluminum surfaces shall be electrottype hard coats such as anodize, satin, etc.

### **5. Protection**

All aluminum parts shall be protected adequately to ensure against damage during transit and construction phase.

## **6. Cleaning**

The constructor does not only protect all entrance units during the construction phase but shall also be responsible for removal of protective materials and cleaning the aluminum surface including glazing before work is accepted by the Engineer.

Aluminum shall be thoroughly cleaned with kerosene or gasoline diluted with water And then wipe surface using clean cloth rags.

No abrasive cleaning materials shall be permitted in cleaning surface.



## DIVISION 07 :      WATERPROOFING

### 1. Description

This item shall consist of furnishing all waterproofing materials, labor, tools, equipment and facilities and undertaking the proper installation works required as shown on the Plans and in accordance with this Specification.

### 2. Material Requirements

#### a) Membrane Waterproofing

Primer shall be as asphalt cold applied, free from water and other foreign matters, and shall conform to the specification requirements defined in ASTM D-41

Built-up membrane shall be made of smoothly woven fibers that are impervious to acid, heat, dampness and rotting. It should permit complete penetration of asphalt compound or bituminous coating in the woven glass fiber.

Preformed membrane shall be self-sealing flexible cold applied bituminous sheets bonded to 0.15 mm thick polythelene film.

### 3. Construction Requirements

#### Roof Deck

#### 1) Surface Preparation

Concrete surface to be applied with waterproofing shall be structurally sound, clean and free of dirt, loose mortar particles, paints film oil, protective coats, efflorescence laitance, etc.

All defects shall be properly corrected and carefully formed to provide a smooth surface that is free of marks and properly cured prior to application works.

Inside corners where vertical and horizontal structure meet shall be provided with cant measuring 50 mm or rounded at corners a minimum of 50 mm radius.

#### 2) Protective Coatings

Where laying of the built-up or preformed membrane conforms with the number of plies required as shown on the plans lay a mixture of sand mastic in the proportion of one part asphalt or bituminous material and four parts coarse screened sand by volume. With a steel trowel at an average of 3 mm thick over the surface of membrane.

Then at the rate of one gallon per (100 square feet) apply aluminum heat reflecting finish thoroughly over the dried sand mastic coating.

### 4. Method of Measurement

This item shall be measured in square meters for areas actually rendered with membrane waterproofing and number of packages for integrally waterproofing and number of packages for integrally waterproofed areas accepted to the satisfaction of the Engineer.

**DIVISION    08    :    PROJECT BILLBOARD**

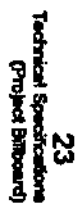
**SPECIFICATION**

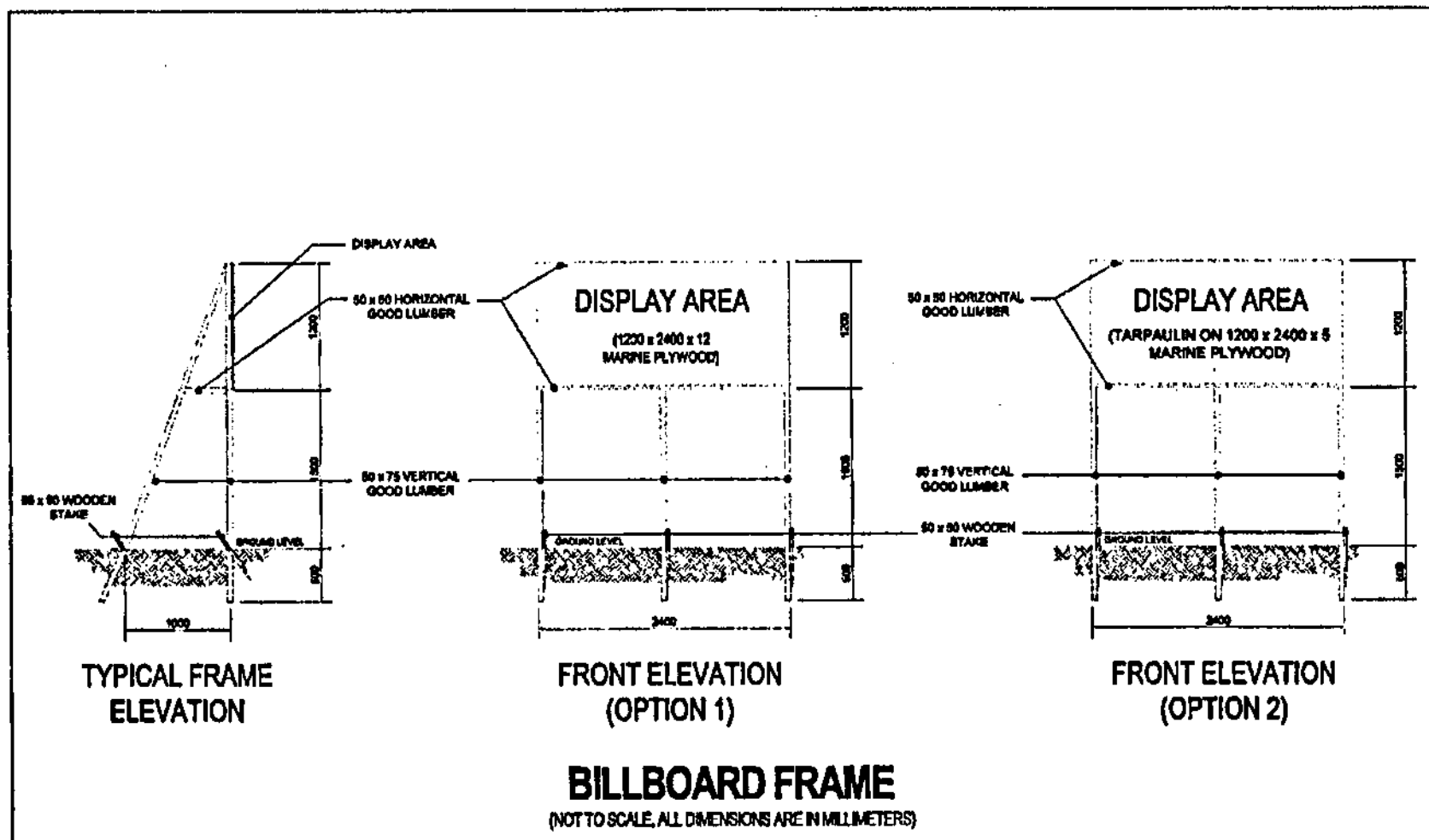
The Project Billboard shall be installed at location(s) designated by the Engineer.

The size and specifications of materials for the standard billboard shall be 4ft. x 8ft. (1,200mm x 2,400mm) using ½ inch (12mm) marine plywood or tarpaulin poster on 3/16 inch (5mm) marine plywood.

Project billboards shall not contain Name(s) and/or picture(s) of any personages.

See attached drawings for further details of the standard billboard.





**DIVISION 09 : SAFETY SIGNAGES AND BARRICADES**

**DESCRIPTION**

This work includes the furnishing and installing of safety signages and barricades in accordance with the specifications and to the details shown below in the drawings, or as directed by the Engineer.

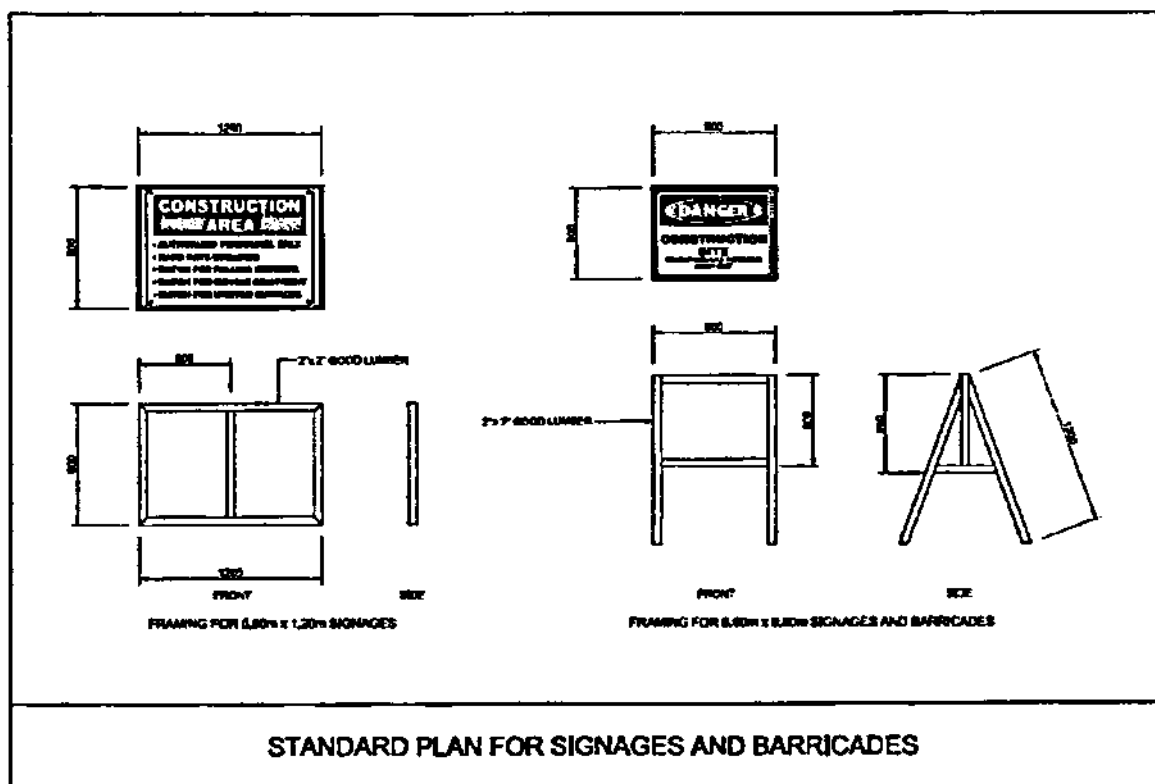
**SPECIFICATION**

The Signage's and Barricades shall be installed at location(s) designated by the Engineer.

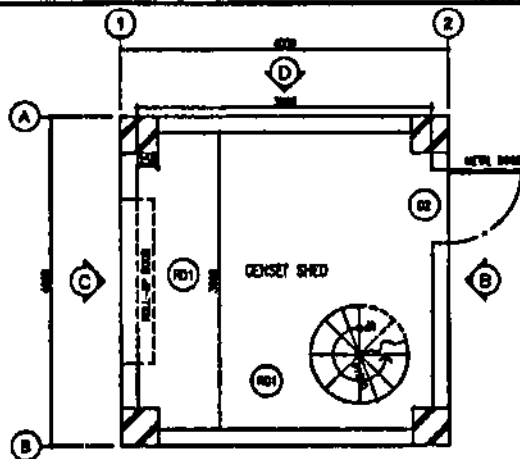
The sizes of the standard signages shall be 2-2/3ft x 4ft (800mm X 1,200mm) for fixed type and 2ft x 2-2/3ft (600mm x 800mm) for mobile type. For barricade standard 2ft x 2-2/3ft (600mm x 800mm) shall be provided.

The materials to be used for signages and barricades are ½ inch (12mm) marine plywood or tarpaulin poster on 2" x 2" (50mm x 50mm) good lumber frame (see drawing below).

The printing or painting shall be the discretion of the Engineer.



**SECTION VII**  
**DRAWINGS (APPROVED PLANS)**



**A GROUND FLOOR PLAN**  
SCALE 1:100

**NOTES:**

INTERIOR WALLS REPAINTING

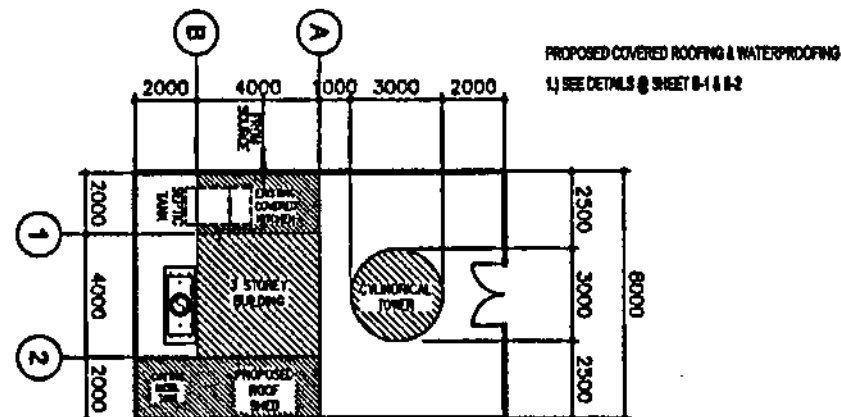
- 1.) SURFACE PREPARATION
- 2.) SUPPLY AND APPLY 2 COATS OF SEMI-GLOSS LATEX PAINT AS FINISH

CONCRETE CEILING REPAINTING

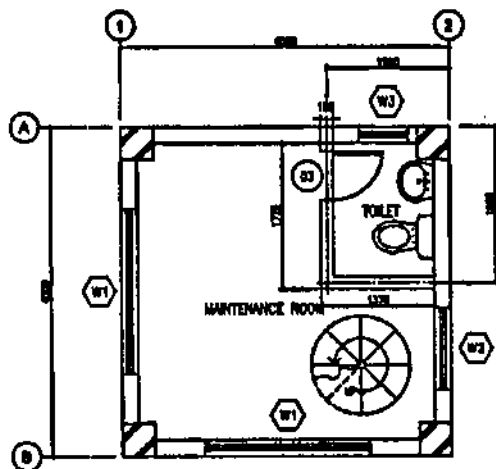
- 1.) SURFACE PREPARATION
- 2.) SUPPLY AND APPLY 3 COATS OF PLAT LATEX PAINT AS FINISH

EXTERIOR WALLS REPAINTING

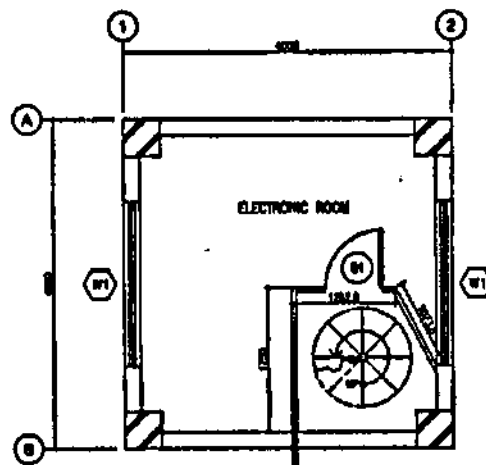
- 1.) SURFACE PREPARATION
- 2.) SUPPLY AND APPLY 2 COATS OF ELASTOMERIC PERMACOAT PAINT AS FINISH



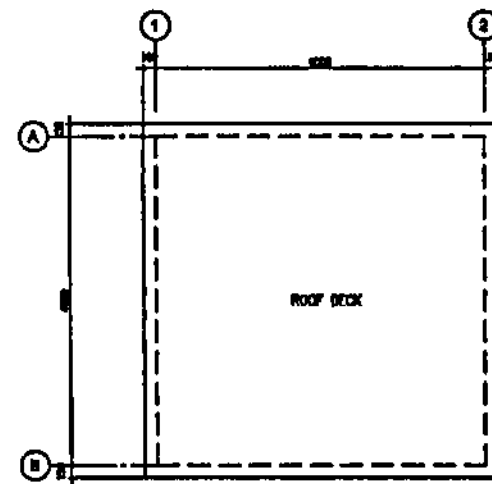
**B SITE DEVELOPMENT PLAN (CORREGIDOR)**  
SCALE 1:80



**B SECOND FLOOR PLAN**  
SCALE 1:100



**C THIRD FLOOR PLAN**  
SCALE 1:100



**D ROOF DECK FLOOR PLAN**  
SCALE 1:100



PROJECT TITLE: Restoration / Improvement and Repainting of VTMS Radar Station 2 Facility at Corregidor Island, Cavite

PORT MANAGEMENT OFFICE  
NCR NORTH

PREPARED BY:

*RV*  
JEVETTE L. LAYAN  
Architect

REVIEWED AND RECOMMENDED BY:

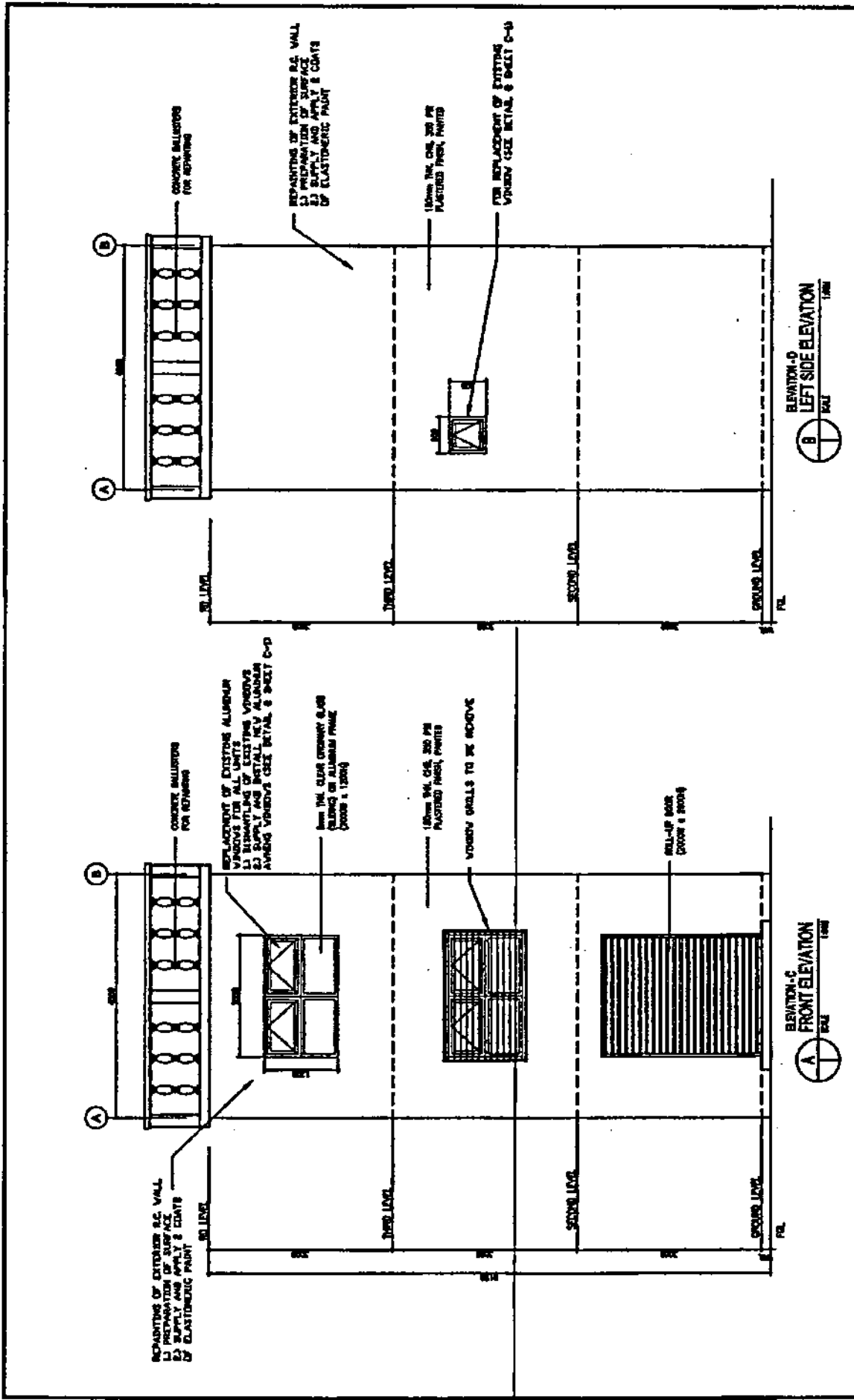
*JOENEL C. MANALON*  
JOENEL C. MANALON  
Professional Engineer

APPROVED:

*AURORA A. MENDOZA*  
AURORA A. MENDOZA  
Architect

SHEET CONTENT:  
FLOOR PLANS  
SITE DEV'T. PLAN

SHEET NO.  
A-1

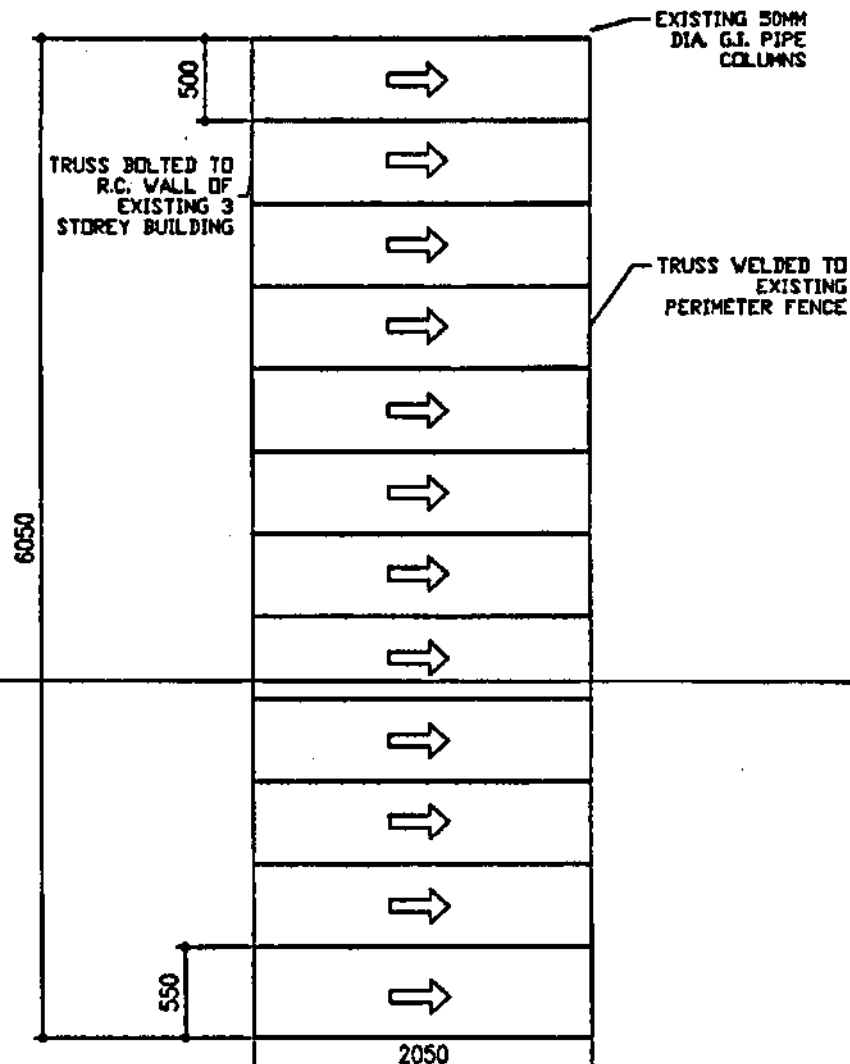


<p>PHILIPPINE PORTS AUTHORITY</p>	<p>PROJECT: VTA Rehabilitation / Improvement and Repainting of VTA's Radar Station 2 Facility at Compadre Island, Cavite</p>	<p>PREPARED BY:</p> <p>PORT MANAGEMENT OFFICE - NCR NORTH</p>	<p>REVIEWED AND APPROVED BY:</p> <p>JOHN L. SORIANO        Project Engineer</p>	<p>APPROVED:</p> <p>ALBERTA A. NEVILLA        Project Engineer</p>	<p>SHEET NO.</p> <p>A-2</p>
-----------------------------------	--	---	---	--	-----------------------------

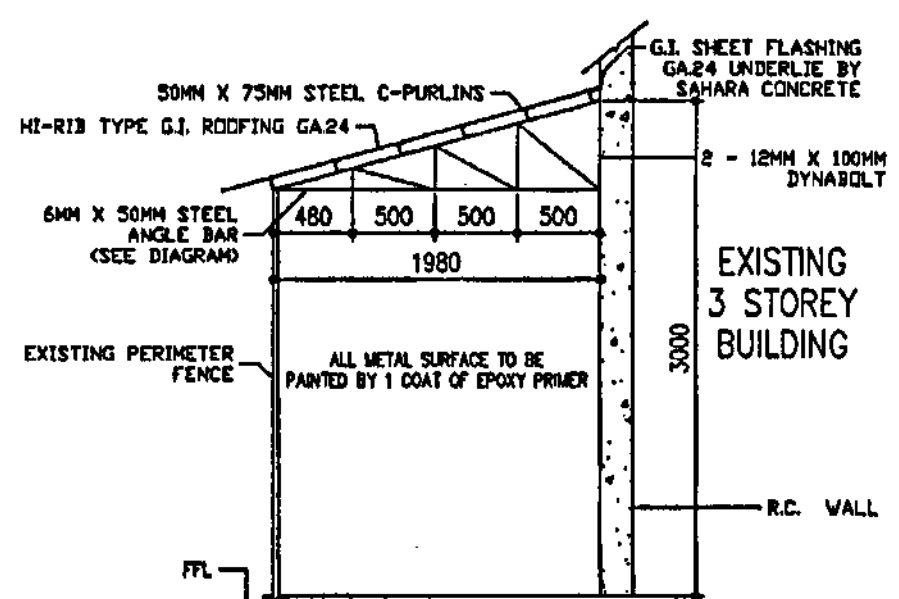




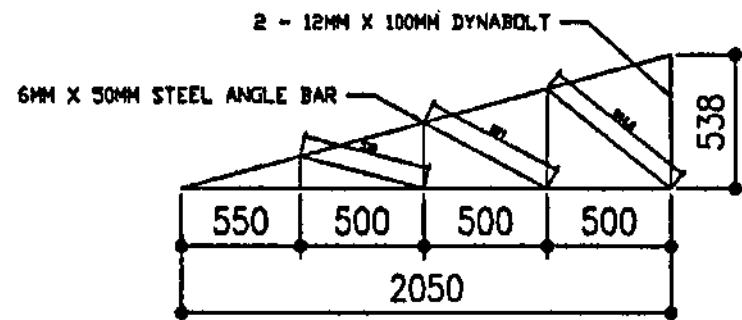




**B**  
**2/1** PROPOSED ROOF FRAMING  
SCALE



**B**  
**2/2** PROPOSED ROOFING SIDE ELEVATION  
SCALE



**B**  
**2/3** PROPOSED TRUSS DIAGRAM  
SCALE



PROJECT TITLE: Restoration / Improvement and Repainting of VTMB Radar Station 2 Facility at Corregidor Island, Cavite

PORT MANAGEMENT OFFICE-  
NCR NORTH

PREPARED BY

**JEVETTE LAM**  
ARCHITECT

REVIEWED AND RECOMMENDED BY

**JOHN C. BANTUAN**  
PROJECT ENGINEER

APPROVED

**AURORA A. MENDOZA**  
PROJECT MANAGER

SHEET CONTENT

EXISTING DOORS & WINDOWS  
PROPOSED NEW WINDOWS

SHEET NO.

**B-2**

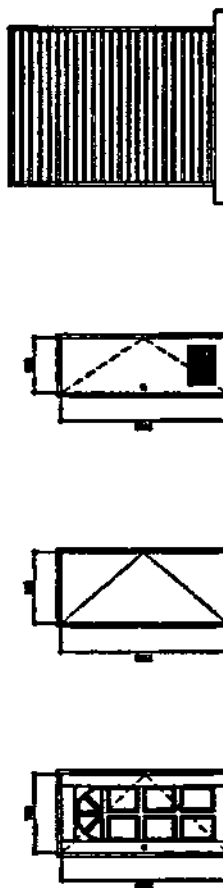
NOTES:

1. ALL EXISTING DOORS AND WINDOWS TO BE REMOVED.

2. ALL NEW DOORS AND WINDOWS TO BE INSTALLED AS SHOWN.

3. ALL NEW DOORS AND WINDOWS TO BE INSTALLED AS SHOWN.

4. ALL NEW DOORS AND WINDOWS TO BE INSTALLED AS SHOWN.



(1)

1. ALL EXISTING DOORS AND WINDOWS TO BE REMOVED.

(2)

2. ALL NEW DOORS AND WINDOWS TO BE INSTALLED AS SHOWN.

(3)

3. ALL NEW DOORS AND WINDOWS TO BE INSTALLED AS SHOWN.

(4)

4. ALL NEW DOORS AND WINDOWS TO BE INSTALLED AS SHOWN.

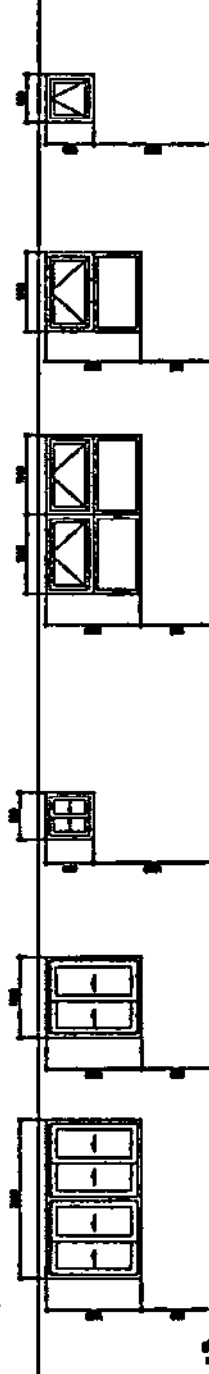
EXISTING DOORS AND WINDOWS

111

112

EXISTING WINDOWS TO BE REMOVE

PROPOSED NEW WINDOWS



(1)

1. ALL EXISTING DOORS AND WINDOWS TO BE REMOVED.

(2)

2. ALL NEW DOORS AND WINDOWS TO BE INSTALLED AS SHOWN.

(3)

3. ALL NEW DOORS AND WINDOWS TO BE INSTALLED AS SHOWN.

(4)

4. ALL NEW DOORS AND WINDOWS TO BE INSTALLED AS SHOWN.

(5)

5. ALL NEW DOORS AND WINDOWS TO BE INSTALLED AS SHOWN.

(6)

6. ALL NEW DOORS AND WINDOWS TO BE INSTALLED AS SHOWN.

PROPOSED NEW WINDOWS

112

113



PORT MANAGEMENT OFFICE-  
MCR NORTH

PROJECT: MCR Rehabilitation / Improvement and Relamping of VIMS Radar Station 2 Facility at Corregidor Island, Cavite

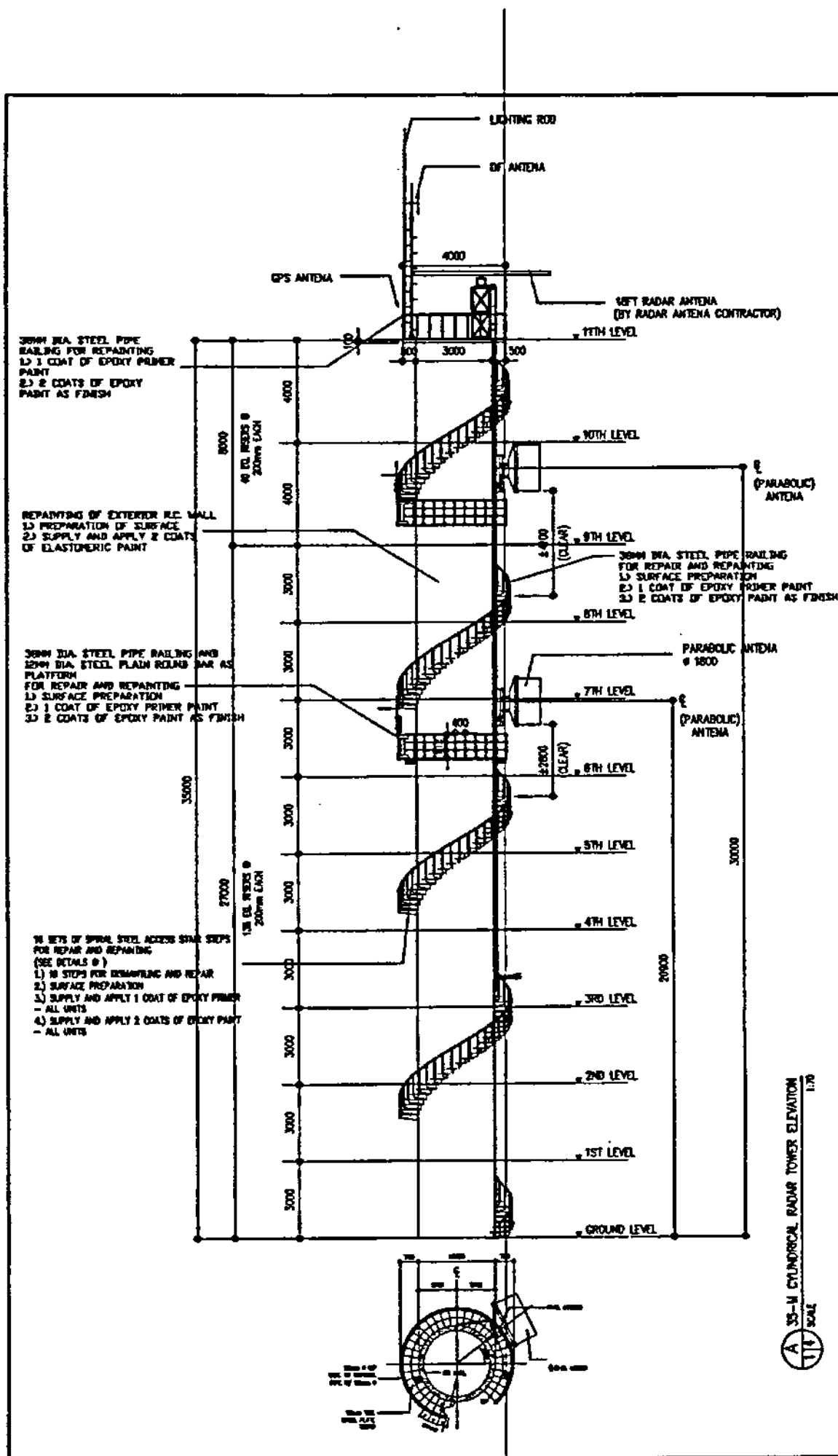
APPROVED BY:

APPROVED BY:

SHEET NO:

C-1

EXISTING DOORS & WINDOWS  
PROPOSED NEW WINDOWS

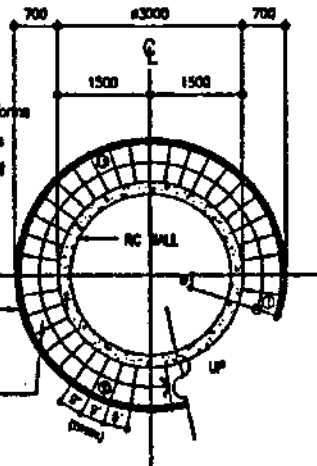


# 35 METRES CYLINDRICAL STRUCTURE - CORREGIDOR

- Note:
- 1.) Surface preparation for all existing railings and platforms
  - 2.) Supply and apply 2 coats of Epoxy paint for all existing railings and platforms

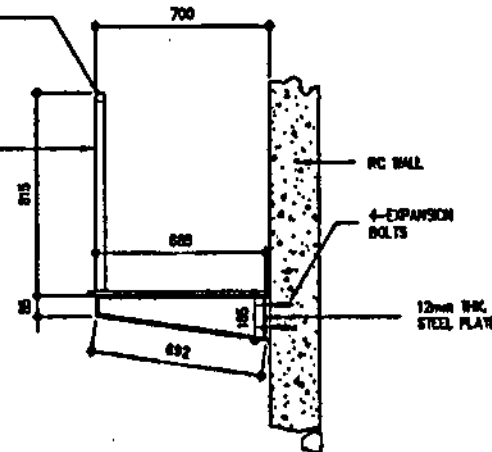
38mm Ø GP  
SCH. 40 VERTICAL  
PIPE W/ 25mm Ø  
GP DIAGONAL RAILING

10mm THK  
STEEL PLATE  
TREAD



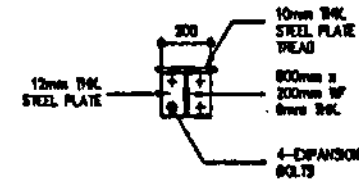
38mm Ø GP  
SCH. 40 RAILING

38mm Ø GP  
SCH. 40 VERTICAL  
PIPE W/ 25mm Ø  
GP DIAGONAL RAILING



Note:

- 1.) Supply, Fabrication and Installation of Steel steps - 16 units (including framing)
- 2.) Supply and apply 1 coat of Epoxy primer for all metal surfaces.
- 3.) Supply and apply 2 coats of Epoxy paint as finish for all metal surfaces.  
(Color to be assign by the End-user)



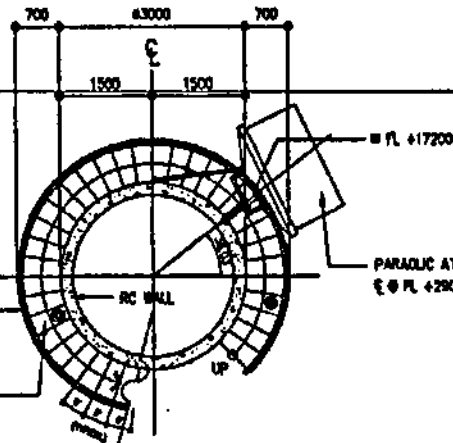
**D** TYPICAL SPIRAL STAIR TREAD SECTION DETAIL  
SCALE 1:10

Note:

- 1.) Surface preparation for all existing railings and platforms
- 2.) Supply and apply 2 coats of Epoxy paint for all existing railings and platforms

38mm Ø GP  
SCH. 40 VERTICAL  
PIPE W/ 25mm Ø  
GP DIAGONAL RAILING

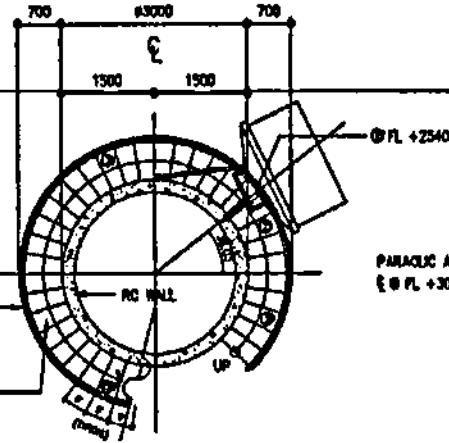
10mm THK  
STEEL PLATE  
TREAD



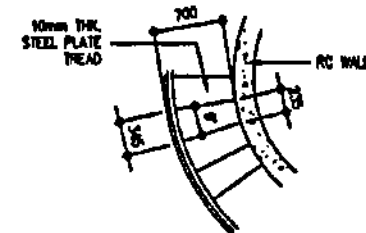
PARALIC ATHERA  
FL + 2900

38mm Ø GP  
SCH. 40 VERTICAL  
PIPE W/ 25mm Ø  
GP DIAGONAL RAILING

10mm THK  
STEEL PLATE  
TREAD



PARALIC ATHERA  
FL + 30000



**B** SPIRAL STAIR PLAN DETAIL @ 6TH TO 7TH LEVEL  
SCALE 1:10

**C** SPIRAL STAIR PLAN DETAIL @ 9TH TO 10TH LEVEL  
SCALE 1:10

**F** THREAD DETAIL  
SCALE 1:20

PHILIPPINE  
PORTS  
AUTHORITY



PROJECT TITLE: Restoration / Improvement and Repainting of VTMS Radar Station 2 Facility at Corregidor Island, Cavite

PORT MANAGEMENT OFFICE-  
NCR NORTH

PREPARED BY:

*JOHN J. MANANAL*  
JOHN J. MANANAL  
Project Engineer

REVIEWED AND RECOMMENDED BY:

*JOHN C. MANANAL*  
JOHN C. MANANAL  
Project Engineer

APPROVED:

*AURORA A. MENDOZA*  
AURORA A. MENDOZA  
Senior Port Manager / Project Manager

SHEET CONTENT

RADAR TOWER SPIRAL STAIR  
CONNECTION DETAILS

SHEET NO

D-2

**SECTION VIII**

**BILL OF QUANTITIES AND ATTACHMENTS**



## BID SUMMARY

### RESTORATION/IMPROVEMENT AND REPAINTING OF VTMS RADAR STATION 2 FACILITY AT CORREGIDOR ISLAND, CAVITE

NO.	DESCRIPTION OF WORK	AMOUNT (Pesos)
1.	GENERAL EXPENSES	
2.	RESTORATION AND REPAINTING OF 35-M CYLINDRICAL R.C. RADAR TOWER BUILDING	
3.	RESTORATION/IMPROVEMENT AND REPAINTING OF 3-STOREY RADAR STATION BUILDING	
4.	INSTALLATION OF ROOF EAVE PROTECTION FOR THE GENSET/GENSET DIESEL TANK	
5.	TRANSPORTATION OF SALVAGE SCRAP MATERIALS AND OTHER UNSERVICEABLE MATERIALS	
BID PRICE		

\_\_\_\_\_  
Name of Firm

\_\_\_\_\_  
Name of Bidder/Authorized Representative  
(Signatory's Legal Capacity)

\_\_\_\_\_  
Date



## BILL OF QUANTITIES



**RESTORATION/IMPROVEMENT AND REPAINTING OF VTMS RADAR STATION 2 FACILITY  
AT CORREGIDOR ISLAND, CAVITE**

ITEM NO. (1)	DESCRIPTION OF WORK (2)	UNIT (3)	QTY. (4)	UNIT PRICE (Pesos) (5)	AMOUNT (Pesos) (4) x (5)
	<b>BILL NO. 1 - GENERAL EXPENSES</b>				
1.1	Mobilization/Demobilization.	lot	lot		
1.2	Provide construction safety and health program in the execution of the project	mos.	3.00		
<b>TOTAL FOR BILL NO. 1</b>					

**Name of Bidder/Authorized Representative  
Signatory's Legal Capacity)**

# BILL OF QUANTITIES



## RESTORATION/IMPROVEMENT AND REPAINTING OF VTMS RADAR STATION 2 FACILITY AT CORREGIDOR ISLAND, CAVITE

ITEM NO. (1)	DESCRIPTION OF WORK (2)	UNIT (3)	QTY. (4)	UNIT PRICE (Pesos) (5)	AMOUNT (Pesos) (4) x (5)
2.1	<b>BILL NO. 2 - RESTORATION AND REPAINTING OF 35-M CYLINDRICAL R.C. RADAR TOWER BUILDING</b>  <b>Replacement of Dilapidated/Corroded Spiral Steel Stair Riser Steps and Railings:</b>				
2.1.1	Erection of scaffoldings and Removal of dilapidated/ corroded steel stair riser steps and railings.	sets	16.00		
2.1.2	Supply, fabricate and install steel stair riser steps and railings including associated builder's to complete the work and painted with 1-coat epoxy primer. as indicated in the plan.	sets	16.00		
<b>Sub-Total for Bill No. 2</b>					

**Name of Bidder/Authorized Representative**  
(Signatory's Legal Capacity)

# BILL OF QUANTITIES



## RESTORATION/IMPROVEMENT AND REPAINTING OF VTMS RADAR STATION 2 FACILITY AT CORREGIDOR ISLAND, CAVITE

ITEM NO. (1)	DESCRIPTION OF WORK (2)	UNIT (3)	QTY. (4)	UNIT PRICE (Pesos) (5)	AMOUNT (Pesos) (4) x (5)
<b>2.2</b>	<b>Repainting of Spiral Steel Stairs, Railings and Handrails:</b>				
2.2.1	Scrapping./Surface preparation and Supply/apply 1-coat epoxy primer paint.	lot	1.00		
2.2.2	Supply and apply 2-coats epoxy paint finish.	lot	1.00		
<b>2.3</b>	<b>Repainting of Cylindrical Concrete Tower:</b>				
2.3.1	Surface preparation and cleaning.	lot	1.00		
2.3.2	Supply and apply 2-coats elastomeric paint finish.	lot	1.00		
				<b>Sub-Total for Bill No. 2</b>	
<b>TOTAL FOR BILL NO. 2</b>					

\_\_\_\_\_  
Name of Bidder/Authorized Representative  
(Signatory's Legal Capacity)

# **BILL OF QUANTITIES**



## **RESTORATION/IMPROVEMENT AND REPAINTING OF VTMS RADAR STATION 2 FACILITY AT CORREGIDOR ISLAND, CAVITE**

ITEM NO. (1)	DESCRIPTION OF WORK (2)	UNIT (3)	QTY. (4)	UNIT PRICE (Pesos) (5)	AMOUNT (Pesos) (4) x (5)
<b>3.1</b>	<b>BILL NO. 3 - RESTORATION/IMPROVEMENT AND REPAINTING OF 3-STOREY RADAR STATION BUILDING</b>				
	<b>Replacement of Dilapidated/Defective Aluminum Sliding windows:</b>				
3.1.1	Removal of existing aluminum sliding windows and steel grills , safe keep for turn-over to PPA.	lot	1.00		
3.1.2	Supply, deliver and install uPVC windows of various sizes as indicated in the plan.	lot	1.00		
<b>Sub-Total for Bill No. 3</b>					

**Name of Bidder/Authorized Representative  
Signatory's Legal Capacity)**

# **BILL OF QUANTITIES**

## **RESTORATION/IMPROVEMENT AND REPAINTING OF VTMS RADAR STATION 2 FACILITY AT CORREGIDOR ISLAND, CAVITE**



ITEM NO. (1)	DESCRIPTION OF WORK (2)	UNIT (3)	QTY. (4)	UNIT PRICE (Pesos) (5)	AMOUNT (Pesos) (4) x (5)
<b>3.2</b>	<b>Repainting Works:</b>				
<b>3.2.1</b>	<b><i>Exterior Building Repainting</i></b>				
3.2.1.1	Scaffolding erection, Scraping and sanding of existing paint and applying Skim coat for uneven surface.	lot	1.00		
3.2.1.2	Supply and apply 2-coats elastomeric paint finish.	lot	1.00		
<b>3.2.2</b>	<b><i>Repainting of Roofing at Extension building:</i></b>				
3.2.2.1	Cleaning and Surface preparations and Supply and apply 1-coat roof paint.	lot	1.00		
<b>Sub-Total for Bill No. 3</b>					

**Name of Bidder/Authorized Representative**  
**Signatory's Legal Capacity)**

# **BILL OF QUANTITIES**

## **RESTORATION/IMPROVEMENT AND REPAINTING OF VTMS RADAR STATION 2 FACILITY AT CORREGIDOR ISLAND, CAVITE**



ITEM NO. (1)	DESCRIPTION OF WORK (2)	UNIT (3)	QTY. (4)	UNIT PRICE (Pesos) (5)	AMOUNT (Pesos) (4) x (5)
<b>3.2.3</b>	<b>Interior Building Repainting</b>				
<b>3.2.3.1</b>	<b>Interior Concrete Wall:</b>				
<b>3.2.3.1.1</b>	Scraping and surface preparation.	lot	1.00		
<b>3.2.3.1.2</b>	Supply and apply 2-coats permacoat semi-gloss latex paint finish.	lot	1.00		
<b>3.2.3.2</b>	<b>Interior Concrete Ceiling (All Floor Levels):</b>				
<b>3.2.3.2.1</b>	Scraping and surface preparation.	lot	1.00		
<b>3.2.3.2.2</b>	Supply and apply 2-coats Flat latex paint finish.	lot	1.00		
<b>Sub-Total for Bill No. 3</b>					

**Name of Bidder/Authorized Representative  
Signatory's Legal Capacity)**

# **BILL OF QUANTITIES**

## **RESTORATION/IMPROVEMENT AND REPAINTING OF VTMS RADAR STATION 2 FACILITY AT CORREGIDOR ISLAND, CAVITE**



ITEM NO. (1)	DESCRIPTION OF WORK (2)	UNIT (3)	QTY. (4)	UNIT PRICE (Pesos) (5)	AMOUNT (Pesos) (4) x (5)
3.2.3.3	<i>Interior Spiral Steel Stairs:</i>				
3.2.3.3.1	Surface preparation and Supply/apply 2-coats of epoxy metal paint for the Spiral steel Stair and Railings	lot	1.00		
3.2.4	<i>Repainting of Doors</i>				
3.2.4.1	Surface preparation and supply/apply 2-coats epoxy metal for the 0.90m x 2.10m metal door including jamb.	unit	1.00		
3.2.4.2	Surface preparation and supply/apply 2-coats Aluminum paint for the 2.60 m x 2.0m Roll-up steel doors ( both sides)	unit	1.00		
<b>Sub-Total for Bill No. 2</b>					

**Name of Bidder/Authorized Representative**  
**Signatory's Legal Capacity)**

# **BILL OF QUANTITIES**

## **RESTORATION/IMPROVEMENT AND REPAINTING OF VTMS RADAR STATION 2 FACILITY AT CORREGIDOR ISLAND, CAVITE**



ITEM NO. (1)	DESCRIPTION OF WORK (2)	UNIT (3)	QTY. (4)	UNIT PRICE (Pesos) (5)	AMOUNT (Pesos) (4) x (5)
3.2.4.3	Surface preparation and supply/apply 2-coat Quick Drying Enamel Paint for the 0.70m x 2.10m wooded flush door/jamb and installation of new door lockset	unit	1.00		
3.3	Replacement of Defective PVC Door at Second Floor Comfort Room				
3.3.1	Dismantling of existing PVC door, Supply and install new 600x2100mm PVC door with door jamb and other associated builder's to complete the work.	lot	1.00		
3.4	Waterproofing of Roofdeck				
3.4.1	Surface preparation/cleaning and Supply and apply 3mm thk Bitumen waterproofing membrane (granulated)	lot	1.00		
Sub-Total for Bill No. 3					

**Name of Bidder/Authorized Representative  
Signatory's Legal Capacity)**





## BILL OF QUANTITIES

## RESTORATION/IMPROVEMENT AND REPAINTING OF VTMS RADAR STATION 2 FACILITY AT CORREGIDOR ISLAND, CAVITE



ITEM NO. (1)	DESCRIPTION OF WORK (2)	UNIT (3)	QTY. (4)	UNIT PRICE (Pesos) (5)	AMOUNT (Pesos) (4) x (5)
	<b>BILL NO. 4 - INSTALLATION OF ROOF EAVE PROTECTION FOR THE GENSET/GENSET DIESEL TANK</b>				
4.1	Supply, fabricate and install structural roof truss framing including C-purlins and associated builder's and painted with 1-coat epoxy primer paint as indicated in the plan.	lot	1.00		
4.2	Supply and install pre-painted corrugated roofing sheet as indicated in the plan.	lot	1.00		
	<b>TOTAL FOR BILL NO. 4</b>				

**Name of Bidder/Authorized Representative  
Signatory's Legal Capacity)**

## BILL OF QUANTITIES



### RESTORATION/IMPROVEMENT AND REPAINTING OF VTMS RADAR STATION 2 FACILITY AT CORREGIDOR ISLAND, CAVITE

ITEM NO. (1)	DESCRIPTION OF WORK (2)	UNIT (3)	QTY. (4)	UNIT PRICE (Pesos) (5)	AMOUNT (Pesos) (4) x (5)
5.1	<b>BILL NO. 5 - TRANSPORTATION OF SALVAGE SCRAP MATERIALS AND OTHER UNSERVICEABLE MATERIALS</b>  Transport and deliver project steel/aluminum/glass scrap materials to include the existing scrap/unserviceable materials from the Project Site to PPA, PMO-NCR North Compound in Manila.	lot	1.00		
<b>TOTAL FOR BILL NO. 5</b>					

\_\_\_\_\_  
 Name of Bidder/Authorized Representative  
 Signatory's Legal Capacity)

## **BASIS OF PAYMENT FOR WORK ITEMS INCLUDED IN THE PROPOSAL**

The basis of payment for the work items included in the contract, as indicated in the Bill of Quantities (BOQ) shall be for the actual quantity in square meter, cubic meter, linear meter, numbers, sets of quantity and/or lumpsum that were actually installed/placed in accordance with the plans and specifications and accepted by the Engineer. The contract unit price shall be full compensation for furnishing all materials, labor, equipment, tools, and incidentals expenses necessary to complete the work.

**FACILITIES TO BE PROVIDED FOR THE ENGINEER & HIS STAFF**

**RENTAL OF SITE OFFICE AND RESIDENCE FOR THE ENGINEER & STAFF**

The Contractor shall provide a temporary site office and residence (rental) with an area of at least 48 square meters for use of the Engineer and his staff for the whole duration of the contract project, provided this item is specified in the BOQ of the contract.

**NOT REQUIRED**

## MINIMUM MAJOR EQUIPMENT REQUIREMENTS

1-unit/s	Oxy-acetylene Cutting Outfit, <i>Owned or Leased</i>
1-unit/s	Welding Machine (400 Amp), Engine Driven, <i>Owned or Leased</i>
1-unit/s	Cargo Truck, 5 tons , <i>Owned or Leased</i>
1-unit/s	Generator Set (8-13Kva), <i>Owned or Leased</i>
150 set/s	H-Frame Scaffoldings, <i>Owned or Leased</i>

## CONSTRUCTION SAFETY AND HEALTH REQUIREMENT

The Contractor shall implement the construction safety and health program in accordance with the applicable provisions of the Occupational Safety and Health Standards (OSHS) of the Department of Labor and Employment (DOLE).

The Contractor, subject to the approval of the Engineer shall provide and maintain throughout the duration of the contract a medical room with at least 15 square meters together with all necessary supplies to be sited in the Contractor's main area.

The Contractor shall provide the following minimum requirements:

### LABOR

1 no. Safety Engineer / Officer

### EQUIPMENT / MATERIALS

#### Personnel Protective Equipment

7	pcs.	Hard Hats
3	pcs.	Safety Glasses/Goggles (clear)
7	pc.	Gloves (Cotton)
7	pc.	Safety Belts
7	pairs	Safety Shoes
7	pcs.	Safety Vest
2	set	Welding Mask (Auto Darkening)
420	pcs.	Dust Mask (N95)

#### Safety Devices

1	lot	Barricades/Safety Nets
1	lot	Warning signs
2	unit/s	Fire extinguisher (10kg)

Medical and First Aid System	-	3 mos.
Temporary shelter for workers	-	1 lot

### NOTE:

The Contractor shall provide the above-cited minimum construction safety and health requirements or as required by the Engineer.

PPA MEMORANDUM CIRCULAR  
No. 02  
Series of 2018  
Attachment  
Page 1 of 10

### REVISED SCHEDULE OF MINIMUM TEST REQUIREMENTS OF CONSTRUCTION MATERIALS FOR PPA INFRASTRUCTURE PROJECTS

Materials/Items of Work	Required Tests	Minimum Incremental Frequency of Tests
<b>I. Construction of Pier/Wharf, Platform and Ramp</b>		
<b>Structural Concrete (SC)</b>		
A Portland Cement	Quality Test	For every 2,000 bags (40kg) or fraction thereof
B Fine Aggregate	Quality Test for Grading, Elutriation (wash), Bulk Specific Gravity, Absorption, Mortar Strength, Soundness, Organic Impurities, Unit Weight, % Clay Lumps and Shale	For every 1,500 cubic meter or fraction thereof
C Coarse Aggregate	Quality Test for Grading, Bulk Specific Gravity, Absorption and Abrasion	For every 1,500 cubic meter or fraction thereof
D Water	Certificate from the Engineer or Quality Test for Density and Chloride Content	One per source
E Steel Bars	Mill Certificate and Quality Test for Chemical Composition and Mechanical Properties	For every 10,000 kg or fraction thereof
F Concrete	Compressive Strength on cylinder samples	1 set consisting of 3 concrete cylinder samples shall be taken from each day's pouring and to represent not more than 75 cu m. of concrete or fraction thereof
	Slump Test	For every mix
G Admixture and Concrete Curing Materials	Quality Test	One per shipment
<b>Piling (P)</b>		
A Concrete Piles	Fabrication Report	One per fabrication
1 Concrete	Same test as for SC (F)	Same frequency as SC (F)
2 Steel Bars	Same test as for SC (E)	Same frequency as SC (E)
3 High Tension Strand	Test for Chemical Composition and Mechanical Properties	For every 20000kg or fraction thereof



PPA MEMORANDUM CIRCULAR  
No. 02  
Series of 2016  
Attachment  
Page 2 of 10

Materials/Items of Work	Required Tests	Minimum Incremental Frequency of Tests
4 Coarse Aggregates	Same Test as for SC (C)	Same frequency as SC (C)
5 Fine Aggregates	Same Test as for SC (B)	Same frequency as SC (B)
B Steel Pipe Piles	Fabrication Report, Mill Certificate and Quality Test for Chemical and Mechanical properties	One per fabrication
1 Steel	Chemical Composition (refer below) <ul style="list-style-type: none"> <li>Under 14" (355.60mm) Outside Diameter</li> <li>14" to 36" (355.6 to 914mm) Outside Dia</li> <li>Over 36" (914mm) Outside Diameter</li> </ul> Mechanical/Tensile	2 from 200 pipe or fraction thereof 2 from 100 pipe or fraction thereof 2 from 3000ft (914m) or fraction thereof One (1) tension test shall be made on one length or fraction thereof of each size, or one piece of skip representing each lot of 200 lengths or fraction thereof of each size
2 Polyurethane Coating	Mill Certificate and Quality Test	One per fabrication
3 Concrete	Same test as for SC (F)	Same frequency as SC (F)
4 Fine Aggregate	Same test as for SC (B)	Same frequency as SC (B)
5 Coarse Aggregate	Same test as for SC (C)	Same frequency as SC (C)
6 Steel Bars	Same Test as SC (E)	Same frequency as SC (E)
7 Water	Same Test as SC (D)	Same frequency as SC (D)
Rubber Dock Fenders (RDF)	Physical Test Performance Test for Energy Absorption and Reaction Force	All units All units
Accessories Washer and Foring Bolt, Anchor Bolt	Physical Test Quality Test for Chemical Composition and Mechanical Properties	All units One per fabrication

PPA MEMORANDUM CIRCULAR  
No. 02  
Series of 2016  
Attachment  
Page 3 of 10

Materials/Items of Work	Required Tests	Minimum Incremental Frequency of Tests
Mooring Bollard (MB) and Accessories (Hexagon Nuts, Plain Washer, Anchor Ring and Anchor Bolt)	Physical Test  Quality Test for Chemical Composition and Mechanical Properties	All Units  One per fabrication
<b>II. Construction of Back-Up Area, Causeway and Pavement</b>  Sheet Piling (SP)		
A. Concrete Sheet Piles		
1. Concrete	Same test as for SC (F)	Same frequency as SC (F)
2. Steel Bars	Same test as for SC (E)	Same frequency as SC (E)
3. High Tension Strands	Same test as for P (A 3)	Same frequency as P (A 3)
4. Fine Aggregates	Same test as for SC (B)	Same frequency as SC (B)
5. Coarse Aggregates	Same Test as for SC (C)	Same frequency as SC (C)
B. Steel Pipe Piles		
1. Steel	Same test as for P (B1)	Same frequency as P (B1)
2. Concrete	Same test as for SC (F)	Same frequency as SC (F)
3. Fine Aggregate	Same test as for SC (B)	Same frequency as SC (B)
4. Steel Bars	Same test as for SC (E)	Same frequency as SC (E)

PPA MEMORANDUM CIRCULAR  
No. 02  
Series of 2016  
Attachment  
Page 4 of 10

Materials/Items of Work	Required Tests	Minimum Incremental Frequency of Tests
Rocks	Test for Apparent Specific Gravity and Abrasion	For every 1,500 cubic meter or fraction thereof
Geotextile Filler	Physical and Mechanical Test Mill Certificate	One per batch One per batch
Sand and Gravel Fill	Quality Test for Organic Impurities and Grading	For every 1,500 cubic meter or fraction thereof
Selected Fill	Quality Test for Grading, Plasticity and Laboratory Compaction Test Laboratory California Bearing Ratio (CBR) Field Density Test	For every 1,500 cubic meter or fraction thereof For every 2,500 cubic meter or fraction thereof For every layer of 150mm of compacted depth at least one group of three in-situ density test for every 500 sq m or fraction thereof
Aggregate Base Course	Quality Test for Grading and Plasticity Quality Test for Grading, Plasticity, Abrasion and Laboratory Compaction Test Laboratory California Bearing Ratio (CBR) Field Density Test	For every 300 cubic meter or fraction thereof For every 1,500 cubic meter or fraction thereof Same frequency as Selected Fill Same frequency as Selected Fill
Portland Cement Concrete Pavement (PCCP)		
A Portland Cement	Same test as for SC (A)	Same frequency as SC (A)
B Fine Aggregate	Same test as for SC (B)	Same frequency as SC (B)
C Coarse Aggregate	Same test as for SC (C)	Same frequency as SC (C)
D Water	Same test as for SC (D)	Same frequency as SC (D)
E Steel Bars (Dowels)	Same test as for SC (E)	Same frequency as SC (E)
F Joint Filler	Quality Test	One (1) per shipment

PPA MEMORANDUM CIRCULAR  
No. 02  
Series of 2016  
Attachment  
Page 5 of 10

<b>Materials/Items of Work</b>	<b>Required Tests</b>	<b>Minimum Incremental Frequency of Tests</b>
G Admixture and Concrete Curing Material	Same test as for SC (G)	Same frequency as SC (G)
H Concrete	Same test as for SC (F) Flexural Test	Same frequency as SC (F) 3 beam samples for every 330 sq m or fraction thereof
I Completed Pavement	Core Test	1 set (3 specimen) for every 2,500 sq m and fraction thereof
Interlocking Concrete Blocks		
A Cement	Same test as for SC (A)	Same frequency as SC (A)
B Fine Aggregate	Same test as for SC (B)	Same frequency as SC (B)
C Coarse Aggregate	Same test as for SC (C)	Same frequency as SC (C)
D Water	Same test as for SC (D)	Same frequency as SC (D)
E Admixture & Concrete Curing Materials	Same test as for SC (G)	Same frequency as SC (G)
F Completed Blocks	Physical Test and Compressive Strength	6 blocks per day of fabrication
Cement Treated Base Course (CTB)		
A Portland Cement	Same test as for SC (A)	Same frequency as SC (A)
B Fine & Coarse Aggregates	Quality Test for Grading, Soundness	Abrasion and For every 1,500 cubic meter or fraction thereof
C Water	Same test as for SC (D)	Same frequency as SC (D)
D Completed CTB	Field Density Test	For every layer of 150mm of compacted depth at least one group of three in-situ density test every 500 sq m or fraction thereof
Retaining Wall/Coping Wall/RC Curb/RC Ditch/Shear Key/Concrete Block/Lean Concrete		
A Portland Cement	Same test as for SC (A)	Same frequency as SC (A)
B Fine Aggregate	Same test as for SC (B)	Same frequency as SC (B)

PPA MEMORANDUM CIRCULAR  
No. 02  
Series of 2016  
Attachment  
Page 6 of 10

Materials/Items of Work	Required Tests	Minimum Incremental Frequency of Tests
C Coarse Aggregates	Same test as for SC (C)	Same frequency as SC (C)
D Water	Same test as for SC (D)	Same frequency as SC (D)
E Steel Bars	Same test as for SC (E)	Same frequency as SC (E)
F Admixture and Concrete Curing	Same test as for SC (G)	Same frequency as SC (G)
G Concrete	Same test as for SC (F)	Same frequency as SC (F)
Tie Rod A Steel	Same test as for SC (E)	One per batch
B Assembly	Performance Test (Tension)	One per batch
Tie Bars and Dowels	Same test as for SC (E)	For every 10,000 kg or fraction thereof per Tie bars and Dowels
Pipe Culverts and Storm Drains A Pipes	Test for Strength, Absorption and Physical	For every 50 pieces
B Mortar or Joint	Same Test as for SC (A, B and D) Alternative Test Same test as for SC (F) and Inspection Report	For every 25 pieces
Concrete Hollow Blocks A Portland Cement	Same test as for SC (A)	Same frequency as SC (A)
B Fine Aggregates	Same test as for SC (B)	Same frequency as SC (B)
C Water	Same test as for SC (D)	Same frequency as SC (C)
D Concrete	Same test as for SC (F)	Same frequency as SC (F)
E Completed CHB	Quality Test	One for every 500 pieces or fraction thereof
Construction Joints (CJ) A Angle Bars	Test for Physical and Mechanical Properties	One per batch
B Steel Bars	Same test as for SC (E)	One per batch
C Zinc (Hot Dip Galvanizing) Coatings	Physical Test for Appearance, Stripping, Weighing, Adherence and Adhesion Coating Thickness Magnetic Thickness Measurement	All units  1 set (3 specimen) for every 100,000 sq mm or fraction thereof

PPA MEMORANDUM CIRCULAR  
No. 02  
Series of 2016  
Attachment  
Page 7 of 10

Materials/Items of Work	Required Tests	Minimum Incremental Frequency of Tests
<b>Sacked Concrete</b>		
A Cement	Same test as for SC (A)	Same frequency as SC (A)
B Fine Aggregates	Same test as for SC (B)	Same frequency as SC (B)
C Coarse Aggregates	Same test as for SC (C)	Same frequency as SC (C)
D Water	Same test as for SC (D)	Same frequency as SC (D)
E Concrete	Same test as for SC (F)	Same frequency as SC (F)
F Sack (jute)	Physical Test	One for every 50 pieces
<b>Rubble Concrete</b>		
A Cement	Same test as for SC (A)	Same frequency as SC (A)
B Fine Aggregates	Same test as for SC (B)	Same frequency as SC (B)
C Coarse Aggregates	Same test as for SC (C)	Same frequency as SC (C)
D Water	Same test as for SC (D)	Same frequency as SC (D)
E Concrete	Same test as for SC (F)	Same frequency as SC (F)
F Rocks	Same test as for ROCKS	Same frequency as ROCKS
<b>Earthworks</b>		
A Sub-grade preparation	Grading Test Plasticity Test (LL, PL, PI) Laboratory Compaction Test  Density Test	For every 1,500 cubic meter or fraction thereof  For every layer of 150mm of compacted depth at least one group of three in-situ density test every 500 sq m or fraction thereof
B Structure Excavation	If excavated materials shall be used as Backfill Grading Test Plasticity Test (LL, PL, PI) Laboratory Compaction Test  Density Test	For every 1,500 cubic meter or fraction thereof  For every layer of 150mm of compacted depth at least one group of three in-situ density test every 500 sq m or fraction thereof

PPA MEMORANDUM CIRCULAR  
No. 02  
Series of 2016  
Attachment  
Page 6 of 10

Materials/Items of Work	Required Tests	Minimum Incremental Frequency of Tests
<b>III Port Operations Building/Passenger Terminal Building/Transit Shed/Warehouse</b>		
<b>STRUCTURAL WORKS</b>		
Refer to Structural Concrete (SC) and Piling Works (P)		
<b>ARCHITECTURAL WORKS</b>		
Ceramic – Filled Liquid Membrane / Water Proofing, Hydrophobic Poreblocking Ingredients with Superplasticizer	Physical Property, Mechanical and Chemical Property, Leak Test / Flood Test	One per shipment
Paint	Quality Test	One 4-L can for every 100 cans or fraction thereof
Ceramic Tile	Inspection and Evaluation Report from the Engineer	One per shipment
Stainless Steel	Inspection and Evaluation Report from the Engineer	One per shipment
Roofing Materials	Inspection and Evaluation Report from the Engineer	One per shipment
Ceiling Materials	Inspection and Evaluation Report from the Engineer	One per shipment
<b>ELECTRICAL AND MECHANICAL WORKS</b>		
Wires / Cables	Inspection and Evaluation Report from the Engineer Testing and Commissioning	One per shipment
Electrical Devices	Inspection and Evaluation Report from the Engineer Testing and Commissioning	One per shipment
Fire Alarm System	Inspection and Evaluation Report from the Engineer Testing and Commissioning	One per item
Wiring Devices	Inspection and Evaluation Report from the Engineer Testing and Commissioning	One per shipment

PPA MEMORANDUM CIRCULAR  
No. 072  
Series of 2016  
Attachment  
Page 8 of 10

Materials/Items of Work	Required Tests	Minimum Incremental Frequency of Tests
Protective Devices	Inspection and Evaluation Report from the Engineer Testing and Commissioning	One per shipment
Telephone System	Inspection and Evaluation Report from the Engineer Testing and Commissioning	One per item
CCTV System	Inspection and Evaluation Report from the Engineer Testing and Commissioning	One per item
CATV System	Inspection and Evaluation Report from the Engineer Testing and Commissioning	One per item
Background Music and Paging System	Inspection and Evaluation Report from the Engineer, Testing and Commissioning	One per item
Air Conditioning Units & Ventilation	Inspection and Evaluation Report from the Engineer Testing and Commissioning	One per item
Conduit Pipes	Inspection and Evaluation Report from the Engineer Testing and Commissioning	One per item
Lighting Fixtures	Inspection and Evaluation Report from the Engineer Testing and Commissioning	One per item
<b>PLUMBING WORKS</b>		
Pipes	Inspection and Evaluation Report from the Engineer Testing and Commissioning	One per item



**SECTION IX**

**CHECKLIST OF TECHNICAL AND  
FINANCIAL DOCUMENTS**

# Checklist of Technical and Financial Documents

## I. TECHNICAL COMPONENT ENVELOPE

### Class "A" Documents

#### Legal Documents

- ☐ (a) Valid PhilGEPS Registration Certificate (Platinum Membership) (all pages)

#### Technical Documents

- ☐ (b) Statement of the prospective bidder of all its ongoing government and private contracts, including contracts awarded but not yet started, if any, whether similar or not similar in nature and complexity to the contract to be bid; and
- ☐ (c) Statement of the bidder's Single Largest Completed Contract (SLCC) similar to the contract to be bid, except under conditions provided under the rules; and
- ☐ (d) Special PCAB License in case of Joint Ventures; and registration for the type and cost of the contract to be bid; and
- ☐ (e) Original copy of Bid Security. If in the form of a Surety Bond, submit also a certification issued by the Insurance Commission; or  
Original copy of Notarized Bid Securing Declaration; and
- ☐ (f) Project Requirements, which shall include the following:
  - ☐ a. Organizational chart for the contract to be bid;
  - ☐ b. List of contractor's key personnel (e.g., Project Manager, Project Engineers, Materials Engineers, and Foremen), to be assigned to the contract to be bid, with their complete qualification and experience data;
  - ☐ c. List of contractor's major equipment units, which are owned, leased, and/or under purchase agreements, supported by proof of ownership or certification of availability of equipment from the equipment lessor/vendor for the duration of the project, as the case may be; and
- ☐ (g) Original duly signed Omnibus Sworn Statement (OSS); and if applicable, Original Notarized Secretary's Certificate in case of a corporation, partnership, or cooperative; or Original Special Power of Attorney of all members of the joint venture giving full power and authority to its officer to sign the OSS and do acts to represent the Bidder.

Financial Documents

- ☐ (h) The prospective bidder's computation of Net Financial Contracting Capacity (NFCC).

**Class "B" Documents**

- ☐ (i) If applicable, duly signed joint venture agreement (JVA) in accordance with RA No. 4566 and its IRR in case the joint venture is already in existence;  
or  
duly notarized statements from all the potential joint venture partners stating that they will enter into and abide by the provisions of the JVA in the instance that the bid is successful.

**II. FINANCIAL COMPONENT ENVELOPE**

- ☐ (j) Original of duly signed and accomplished Financial Bid Form; and

*Other documentary requirements under RA No. 9184*

- ☐ (k) Original of duly signed Bid Prices in the Bill of Quantities; and  
☐ (l) Duly accomplished Detailed Estimates Form, including a summary sheet indicating the unit prices of construction materials, labor rates, and equipment rentals used in coming up with the Bid; and  
☐ (m) Cash Flow by Quarter.

**SECTION X**  
**BIDDING FORMS**

**Bid Form for the Procurement of Infrastructure Projects**  
*[shall be submitted with the Bid]***BID FORM**

Date : \_\_\_\_\_

Project Identification No. : \_\_\_\_\_

To: **Philippine Ports Authority**  
PPA Building, Bonifacio Drive,  
South Harbor, Port Area, Manila

Having examined the Philippine Bidding Documents (PBDs) including the Supplemental or Bid Bulletin Numbers \_\_\_\_\_, the receipt of which is hereby duly acknowledged, we, the undersigned, declare that:

- a. We have no reservation to the PBDs, including the Supplemental or Bid Bulletins, for the Procurement Project: **Restoration/Improvement and Repainting of VTMS Radar Station 2 Facility at Corregidor Island, Cavite:**
- b. We offer to execute the Works for this Contract in accordance with the PBDs;
- c. The total price of our Bid in words and figures, excluding any discounts offered below is: \_\_\_\_\_
- d. The discounts offered and the methodology for their application are: \_\_\_\_\_;
- e. The total bid price includes the cost of all taxes, such as, but not limited to: *[specify the applicable taxes, e.g. (i) value added tax (VAT), (ii) income tax, (iii) local taxes, and (iv) other fiscal levies and duties]*, which are itemized herein and reflected in the detailed estimates,
- f. Our Bid shall be valid within the period stated in the PBDs, and it shall remain binding upon us at any time before the expiration of that period;
- g. If our Bid is accepted, we commit to obtain a Performance Security in the amount of \_\_\_\_\_ percent of the Contract Price for the due performance of the Contract, or a Performance Securing Declaration in lieu of the the allowable forms of Performance Security, subject to the terms and conditions of issued GPPB guidelines<sup>1</sup> for this purpose;
- h. We are not participating, as Bidders, in more than one Bid in this bidding process, other than alternative offers in accordance with the Bidding Documents;
- i. We understand that this Bid, together with your written acceptance thereof included

<sup>1</sup> currently based on GPPB Resolution No. 09-2020

In your notification of award, shall constitute a binding contract between us, until a formal Contract is prepared and executed; and

- j. We understand that you are not bound to accept the Lowest Calculated Bid or any other Bid that you may receive.
- k. We likewise certify/confirm that the undersigned, is the duly authorized representative of the bidder, and granted full power and authority to do, execute and perform any and all acts necessary to participate, submit the bid, and to sign and execute the ensuing contract for the **Restoration/Improvement and Repainting of VTMS Radar Station 2 Facility at Corregidor Island, Cavite of the Philippine Ports Authority.**
- l. We acknowledge that failure to sign each and every page of this Bid Form, including the Bill of Quantities, shall be a ground for the rejection of our bid.

Name: \_\_\_\_\_

Legal Capacity: \_\_\_\_\_

Signature: \_\_\_\_\_

Duly authorized to sign the Bid for and behalf of: \_\_\_\_\_

Date: \_\_\_\_\_

# STATEMENT OF THE BIDDER'S ALL ONGOING GOVERNMENT AND PRIVATE CONTRACTS, INCLUDING CONTRACTS AWARDED BUT NOT YET STARTED

I hereby declare that all ongoing contracts, including awarded contracts yet to be started coinciding with the contract to be bid are listed below:

Name of outstanding Contracts 1]	Owner's Name and Address	Scope of Work 2]	Contractor's Role and Percentage of Participation 3]	Total Contract Amount or Value 4]	Date of Contract and NOA 5]	Value of Outstanding Works 6]	Accomplishment (in percentage, %) 7]		Contract Duration 8]	
							Planned	Actual	Start of Project	Estimated Completion Date
A) Government Contracts i. On-going ii. Awarded but not yet started  B) Private Contracts i. On-going ii. Awarded but not yet started										

## NOTE:

- 1] As appearing in the contract executed by the parties.
- 2] With special reference to the Scope of Works of the Project as described/enumerated in the Contract.
- 3] Indicate the percentage of participation and whether as Sole Contractor, Sub-Contractor or Member in a Joint Venture / Consortium.
- 4] Indicate the FOREX used if Contract Value is expressed in a currency other than the Philippine Peso.
- 5] As appearing in the Contract and Notice of Award (NOA).
- 6] Amount or value of all outstanding or uncompleted portions of the projects under ongoing contracts, including awarded contracts yet to be started coinciding with the contract to be bid.
- 7] Percentage of Accomplishment as of the preceding month which should not be earlier than two (2) months from the date of bid submission.
- 8] As appearing in the Notice to Proceed and Contract.

This Statement shall be supported by:

- a) Notice of Award
- b) Notice to Proceed and Contract

\_\_\_\_\_  
Name of Firm

\_\_\_\_\_  
Name of Bidder/Authorized Representative  
(Signatory's Legal Capacity)

\_\_\_\_\_  
Date

Revised: September 2021

**STATEMENT OF THE BIDDER'S SINGLE LARGEST COMPLETED CONTRACT (SLCC) SIMILAR TO THE CONTRACT TO BE BID**

Name of the completed Contract  1]	Owner's Name and Address	Scope of Work  2]	Contractor's Role and Percentage of Participation  3]	Total Contract Value At 4]			Date of Award  5]	Contract Duration 6]	
				Award	Completion	Escalated Value to Present Prices		Start	Completed

**NOTE :**

- 1] As appearing in the contract executed by the parties.
  - 2] With special reference to the Scope of Works of the Project as described/enumerated in the Contract.
  - 3] Indicate the percentage of participation and whether as Sole Contractor, Sub-Contractor or Member in a Joint Venture / Consortium.
  - 4] Indicate the FOREX used if Contract Value is expressed in a currency other than the Philippine Peso. Attached the computation for the escalated contract value.
  - 5] As appearing in the Notice of Award.
  - 6] As appearing in the Notice to proceed and Certificate of Completion.
- A. The bidder must have an experience of having completed a SLCC that is similar to the contract to be bid equivalent to at least fifty percent (50%) of the ABC, adjusted if necessary, by the Bidder to current prices using the PSA consumer price indices. A contract is considered to be "similar" to the contract to be bid if it has the same Major Categories of Work as stated in the Bid Data Sheet (BDS).
- B. This Statement shall be supported by:
- a. Notice of Award, Notice to Proceed and Contract.
  - b. Project Owner's Certificate of Final Acceptance issued by the owner and/ or Constructors Performance Evaluation System (CPES) Final Rating, which must be at least Satisfactory. The said Certificate of Acceptance shall contain the following: 1) Name of project owner that issued the certificate, 2) Name of Contractor/ Constructor, 3) Name of Contract, and 4) Contract Duration.
  - c. Recapitulation or Final Bill of Quantities.

\_\_\_\_\_  
Name of Firm\_\_\_\_\_  
Name of Bidder/Authorized Representative  
(Signatory's Legal Capacity)\_\_\_\_\_  
Date

Revised: September 2021



**STATEMENT OF THE BIDDER'S EXPERIENCE ON MAJOR CATEGORIES OF WORK OF THE SLCC INCLUDING OTHER COMPLETED CONTRACTS  
SIMILAR TO THE CONTRACT TO BE BID**

Major Categories of Work 1]	Unit of Measure 1]	Quantity 1]	SLCC similar to the contract to be bid 2]	Other completed contracts similar to the contract to be bid 2]			Unit of Measure 2]	Quantity 2]
			Name of the contract	Name of the contract	Name of the contract	Name of the contract		
1. Construction of Building	sq.m.	24.00						

**NOTE:**

1] As stated in the Bid Data Sheet.

2] As appearing in the Recapitulation and/ or Final Bill of Quantities.

This statement shall be supported by:

a. Notice of Award, Notice to Proceed and Contract.

b. Project Owner's Certificate of Final Acceptance issued by the owner and/ or Constructors Performance Evaluation System (CPES) Final Rating, of at least satisfactory. The said Certificate of Acceptance shall contain the following: 1) Name of project owner that issued the certificate, 2) Name of Contractor/Constructor, 3) Name of Contract, and 4) Contract Duration.

c. Recapitulation and/ or Final Bill of Quantities.

\_\_\_\_\_  
Name of Firm

\_\_\_\_\_  
Name of Bidder/Authorized Representative  
Signatory's Legal Capacity

\_\_\_\_\_  
Date

Revised: September 2021

## FINANCIAL DATA

- A. The prospective bidder's audited Financial Statements, showing, among others, the prospective bidder's total and current assets and liabilities, stamped "RECEIVED" by the Bureau of Internal Revenue (BIR), or its duly accredited and authorized institutions, for the preceding calendar year which should not be earlier than two (2) years from the date of bid submission.

	Year
1. Total Assets	
2. Current Assets	
3. Total Liabilities	
4. Current Liabilities	
5. Net worth (1-3)	
6. Net Working Capital (2-4)	

- B. The computation of the bidders Net Financial Contracting Capacity (NFCC) must be at least equal to the ABC to be bid, as follows:

NFCC = [ (Current assets minus current liabilities) (15) ] minus the value of all outstanding or uncompleted portions of the projects under ongoing contracts, including awarded contracts yet to be started coinciding with the contract to be bid.

NFCC = \_\_\_\_\_

Attached herewith are certified true copies of the audited financial statements stamped received by the BIR or BIR authorized collecting agent for the latest/immediately preceding calendar year.

\_\_\_\_\_  
Name of Firm/Applicant

\_\_\_\_\_  
Authorized Signing Official

Date: \_\_\_\_\_

### NOTES:

If Partnership or Joint Venture, each Partner or Member Firm of Joint venture shall submit separate financial statements.

# STATEMENT OF THE BIDDER'S KEY PERSONNEL PLEDGED FOR THE CONTRACT TO BE BID

I hereby declare that the following key personnel are qualified and available for the duration of the contract to be bid:

Position of Key Personnel 1]	Name	No. of Key Personnel	Similar Experience in the Position (Years) 2]	Total Experience in the Position (Years)	Attachment(s)	Annex(es)
Project Manager					PRC License (CE Preferred) Complete Qualification and Experience Data Certificate of Commitment	Annex " _ "
Project Engineer					PRC License (CE Preferred) Complete Qualification and Experience Data Certificate of Commitment	Annex " _ "
Materials Engineer I					PRC License (CE Preferred) Submit Valid and Renewed DPWH Certificate of Accreditation Submit Accreditation Identification Card as Materials Engineer Complete Qualification and Experience Data Certificate of Commitment	Annex " _ "
Construction Safety and Health Officer					Certificate of Safety and Health Construction Related Course issued by DOLE Accredited Trainings	Annex " _ "
					Complete Qualification and Experience Data Certificate of Commitment	
Foreman					Complete Qualification and Experience Data Certificate of Commitment	Annex " _ "
Other Position(s)					Complete Qualification and Experience Data Certificate of Commitment	Annex " _ "

NOTE: 1] As stated in the Bid Data Sheet

2] The number of years of experience of the key personnel shall be as indicated in the qualification and experience data or curriculum vitae.

Minimum qualification requirements: The key personnel must have a work experience that is similar in nature and complexity to the contract to be bid.

Project Manager - Five (5) years

Project Engineer - Three (3) years

Foreman - Five (5) years

Construction Safety and Health Officer - One (1) year

Materials Engineer - One (1) year

Materials Engineer I - for projects costing up to 100M

Materials Engineer II - for projects costing more than 100M

\_\_\_\_\_  
Name of Firm

\_\_\_\_\_  
Name of Bidder/Authorized Representative  
(Signatory's Legal Capacity)

\_\_\_\_\_  
Date

Revised: September 2021

# STATEMENT OF THE BIDDER'S EQUIPMENT PLEDGED FOR THE CONTRACT TO BE BID

I hereby declare that the following equipment are in good operating condition and available for the duration of the contract to be bid:

DESCRIPTION (Type, Model, Make)	No. of Unit(s)	Capacity/ Output	Owned, Leased, and/or under purchased agreement 2]	Proof of Ownership/ Leased/ Under Purchase Agreement (Mark as Annex "A.....Z") 3]	OTHER INFORMATION (As Applicable)				
		1]			Manufacturer	Engine Serial No.	Chassis No./ Name of Vessel	Location	Status

## NOTE:

- 1] The unit of capacity of the pledged equipment shall be as indicated in the Proof of Ownership, i.e. GW (for crane barge), DWT (for deck barge and hopper barge), Ton (for crane, road roller and drop hammer), kg.-m/blow (for diesel hammer), cu.m. (for dump truck), hp (for tugboat, road grader, bulldozer and concrete vibrator), cfm (for compressor), gal (for water truck with pump), amp (for welding machine), bagger (for concrete mixer). If the capacity of the pledged equipment is not indicated in the Proof of Ownership/Leased Contract/Purchased Agreement, submit other proof of capacity such as specifications, brochures or other verifiable printouts indicating the model name, model number and other details of the equipment.
- 2] Indicate if the pledged equipment are owned, leased or under purchase agreement.
- 3] If the pledged equipment is owned, it should be in the name of the bidder. Submit proof of ownership, i.e. deed of sale, sales invoice, official receipt; For owned Water Truck, Dump Truck and Transit Mixer submit LTO Certificate of Registration and valid Official Receipt; For owned barge/tugboat, submit Marina Certificate of Ownership and valid Cargo Ship Safety Certificate.

If the pledged equipment is leased/under purchased agreement, submit certification of availability of equipment from the equipment lessor/vendor for the duration of the project, and duly Notarized copy of leased contract/purchased agreement.

If the pledged barge/tugboat is leased/under purchase agreement, submit certification of availability of barge/tugboat from the equipment lessor/vendor for the duration of the project, and duly Notarized copy of leased contract/purchased agreement together with a copy of the Marina Certificate of Ownership and valid Cargo Ship Safety Certificate.

The Minimum Major Equipment Requirements are listed in Section 8, Annex 3.

Name of Firm

Name of Bidder/Authorized Representative  
(Signatory's Legal Capacity)

Date

Revised: September 2021

**Omnibus Sworn Statement for Sole Proprietorship**  
*[shall be submitted with the Bid]*

REPUBLIC OF THE PHILIPPINES )  
CITY/MUNICIPALITY OF \_\_\_\_\_ ) S.S.

**AFFIDAVIT**

I, \_\_\_\_\_, of legal age, [Civil Status], [Nationality], and residing at \_\_\_\_\_, after having been duly sworn in accordance with law, do hereby depose and state that:

1. I am the sole proprietor or authorized representative of \_\_\_\_\_ with office address at \_\_\_\_\_;
2. As the owner and sole proprietor, or authorized representative of \_\_\_\_\_, I have full power and authority to do, execute and perform any and all acts necessary to participate, submit the bid, and to sign and execute the ensuing contract for **Restoration/Improvement and Repainting of VTMS Radar Station 2 Facility at Corregidor Island, Cavite of the Philippine Ports Authority**, as shown in the attached duly notarized Special Power of Attorney;
3. [Name of Bidder] is not "blacklisted" or barred from bidding by the Government of the Philippines or any of its agencies, offices, corporations, or Local Government Units, foreign government/foreign or international financing institution whose blacklisting rules have been recognized by the Government Procurement Policy Board, by itself or by relation, membership, association, affiliation, or controlling interest with another blacklisted person or entity as defined and provided for in the Uniform Guidelines on Blacklisting;
4. Each of the documents submitted in satisfaction of the bidding requirements is an authentic copy of the original, complete, and all statements and information provided therein are true and correct;
5. [Name of Bidder] is authorizing the Head of the Procuring Entity or its duly authorized representative(s) to verify all the documents submitted;
6. The owner or sole proprietor is not related to the Head of the Procuring Entity, members of the Bids and Awards Committee (BAC), the Technical Working Group, and the BAC Secretariat, the head of the Project Management Office or the end-user unit, and the project consultants by consanguinity or affinity up to the third civil degree;
7. [Name of Bidder] complies with existing labor laws and standards; and
8. [Name of Bidder] is aware of and has undertaken the responsibilities as a Bidder in compliance with the Philippine Bidding Documents, which includes:
  - a. Carefully examining all of the Bidding Documents;
  - b. Acknowledging all conditions, local or otherwise, affecting the implementation of the Contract;
  - c. Making an estimate of the facilities available and needed for the contract to be bid, if any; and
  - d. Inquiring or securing Supplemental/Bid Bulletin(s) issued for the [Name of the Project].

9. [Name of Bidder] did not give or pay directly or indirectly, any commission, amount, fee, or any form of consideration, pecuniary or otherwise, to any person or official, personnel or representative of the government in relation to any procurement project or activity.
10. In case advance payment was made or given, failure to perform or deliver any of the obligations and undertakings in the contract shall be sufficient grounds to constitute criminal liability for Swindling (Estafa) or the commission of fraud with unfaithfulness or abuse of confidence through misappropriating or converting any payment received by a person or entity under an obligation involving the duty to deliver certain goods or services, to the prejudice of the public and the government of the Philippines pursuant to Article 315 of Act No. 3815 s. 1930, as amended, or the Revised Penal Code.

IN WITNESS WHEREOF, I have hereunto set my hand this \_\_ day of \_\_, 20\_\_ at \_\_\_\_\_, Philippines.

\_\_\_\_\_  
Name of Bidder/ Authorized Representative  
(Signatory's Legal Capacity)  
AFFIANT

[Jurat]  
[Format shall be based on the latest Rules on Notarial Practice]

**Omnibus Sworn Statement for Partnership or Cooperative**  
*[shall be submitted with the Bid]*

REPUBLIC OF THE PHILIPPINES )  
CITY/MUNICIPALITY OF \_\_\_\_\_ ) S.S.

**AFFIDAVIT**

I, \_\_\_\_\_, of legal age, [Civil Status], [Nationality], and residing at \_\_\_\_\_,  
after having been duly sworn in accordance with law, do hereby depose and state that:

1. I am the duly authorized and designated representative of \_\_\_\_\_ with office address at \_\_\_\_\_;
2. I am granted full power and authority to do, execute and perform any and all acts necessary to participate, submit the bid, and to sign and execute the ensuing contract for **Restoration/Improvement of VTMS Radar Station 2 Facility at Corregidor Island, Cavite** of the Philippine Ports Authority, as shown in the attached [state title of attached document showing proof of authorization (e.g., duly notarized Secretary's Certificate, Board/Partnership Resolution, or Special Power of Attorney, whichever is applicable)];
3. [Name of Bidder] is not "blacklisted" or barred from bidding by the Government of the Philippines or any of its agencies, offices, corporations, or Local Government Units, foreign government/foreign or international financing institution whose blacklisting rules have been recognized by the Government Procurement Policy Board, by itself or by relation, membership, association, affiliation, or controlling interest with another blacklisted person or entity as defined and provided for in the Uniform Guidelines on Blacklisting;
4. Each of the documents submitted in satisfaction of the bidding requirements is an authentic copy of the original, complete, and all statements and information provided therein are true and correct;
5. [Name of Bidder] is authorizing the Head of the Procuring Entity or its duly authorized representative(s) to verify all the documents submitted;
6. None of the officers and members of [Name of Bidder] is related to the Head of the Procuring Entity, members of the Bids and Awards Committee (BAC), the Technical Working Group, and the BAC Secretariat, the head of the Project Management Office or the end-user unit, and the project consultants by consanguinity or affinity up to the third civil degree;
7. [Name of Bidder] complies with existing labor laws and standards; and
8. [Name of Bidder] is aware of and has undertaken the responsibilities as a Bidder in compliance with the Philippine Bidding Documents, which includes:
  - a. Carefully examining all of the Bidding Documents;
  - b. Acknowledging all conditions, local or otherwise, affecting the implementation of the Contract;
  - c. Making an estimate of the facilities available and needed for the contract to be bid, if any; and
  - d. Inquiring or securing Supplemental/Bid Bulletin(s) issued for the [Name of the Project].

9. [Name of Bidder] did not give or pay directly or indirectly, any commission, amount, fee, or any form of consideration, pecuniary or otherwise, to any person or official, personnel or representative of the government in relation to any procurement project or activity.
10. In case advance payment was made or given, failure to perform or deliver any of the obligations and undertakings in the contract shall be sufficient grounds to constitute criminal liability for Swindling (Estafa) or the commission of fraud with unfaithfulness or abuse of confidence through misappropriating or converting any payment received by a person or entity under an obligation involving the duty to deliver certain goods or services, to the prejudice of the public and the government of the Philippines pursuant to Article 315 of Act No. 3815 s. 1930, as amended, or the Revised Penal Code.

IN WITNESS WHEREOF, I have hereunto set my hand this \_\_ day of \_\_, 20\_\_ at \_\_\_\_\_, Philippines.

\_\_\_\_\_  
Name of Bidder/ Authorized Representative  
(Signatory's Legal Capacity)  
AFFIANT

**[Jurat]**  
*[Format shall be based on the latest Rules on Notarial Practice]*



**Omnibus Sworn Statement for Corporation or Joint Venture**  
*[shall be submitted with the Bid]*

REPUBLIC OF THE PHILIPPINES )  
CITY/MUNICIPALITY OF \_\_\_\_\_ ) S.S.

**AFFIDAVIT**

I, \_\_\_\_\_, of legal age, [Civil Status], [Nationality], and residing at \_\_\_\_\_, after having been duly sworn in accordance with law, do hereby depose and state that:

1. I am the duly authorized and designated representative of \_\_\_\_\_ with office address at \_\_\_\_\_;
2. I am granted full power and authority to do, execute and perform any and all acts necessary to participate, submit the bid, and to sign and execute the ensuing contract for **Restoration/Improvement and Repainting of VTMS Radar Station 2 Facility at Corregidor Island, Cavite**, as shown in the attached [state title of attached document showing proof of authorization (e.g., duly notarized Secretary's Certificate, Board/Partnership Resolution, or Special Power of Attorney, whichever is applicable)];
3. [Name of Bidder] is not "blacklisted" or barred from bidding by the Government of the Philippines or any of its agencies, offices, corporations, or Local Government Units, foreign government/foreign or international financing institution whose blacklisting rules have been recognized by the Government Procurement Policy Board, by itself or by relation, membership, association, affiliation, or controlling interest with another blacklisted person or entity as defined and provided for in the Uniform Guidelines on Blacklisting;
4. Each of the documents submitted in satisfaction of the bidding requirements is an authentic copy of the original, complete, and all statements and information provided therein are true and correct;
5. [Name of Bidder] is authorizing the Head of the Procuring Entity or its duly authorized representative(s) to verify all the documents submitted;
6. None of the officers, directors, and controlling stockholders of [Name of Bidder] is related to the Head of the Procuring Entity, members of the Bids and Awards Committee (BAC), the Technical Working Group, and the BAC Secretariat, the head of the Project Management Office or the end-user unit, and the project consultants by consanguinity or affinity up to the third civil degree;
7. [Name of Bidder] complies with existing labor laws and standards; and
8. [Name of Bidder] is aware of and has undertaken the responsibilities as a Bidder in compliance with the Philippine Bidding Documents, which includes:
  - a. Carefully examining all of the Bidding Documents;
  - b. Acknowledging all conditions, local or otherwise, affecting the implementation of the Contract;
  - c. Making an estimate of the facilities available and needed for the contract to be bid, if any; and
  - d. Inquiring or securing Supplemental/Bid Bulletin(s) issued for the [Name of the Project].
9. [Name of Bidder] did not give or pay directly or indirectly, any commission, amount, fee, or any

form of consideration, pecuniary or otherwise, to any person or official, personnel or representative of the government in relation to any procurement project or activity.

10. In case advance payment was made or given, failure to perform or deliver any of the obligations and undertakings in the contract shall be sufficient grounds to constitute criminal liability for Swindling (Estafa) or the commission of fraud with unfaithfulness or abuse of confidence through misappropriating or converting any payment received by a person or entity under an obligation involving the duty to deliver certain goods or services, to the prejudice of the public and the government of the Philippines pursuant to Article 315 of Act No. 3815 s. 1930, as amended, or the Revised Penal Code.

IN WITNESS WHEREOF, I have hereunto set my hand this \_\_\_ day of \_\_\_, 20\_\_ at \_\_\_\_\_, Philippines.

\_\_\_\_\_  
Name of Bidder/ Authorized Representative  
(Signatory's Legal Capacity)  
AFFIANT

**[Jurat]**

*[Format shall be based on the latest Rules on Notarial Practice]*

**Bid Securing Declaration Form**  
*[shall be submitted with the Bid if bidder opts to provide this form of bid security]*

---

REPUBLIC OF THE PHILIPPINES)  
CITY OF \_\_\_\_\_) S.S.

**BID SECURING DECLARATION**  
Project Identification No.: \_\_\_\_\_

To: **Philippine Ports Authority**  
PPA Building, Bonifacio Drive,  
South Harbor, Port Area, Manila

I/We, the undersigned, declare that:

1. I/We understand that, according to your conditions, bids must be supported by a Bid Security, which may be in the form of a Bid Securing Declaration.
2. I/We accept that: (a) I/we will be automatically disqualified from bidding for any procurement contract with any procuring entity for a period of two (2) years upon receipt of your Blacklisting Order; and, (b) I/we will pay the applicable fine provided under Section 6 of the Guidelines on the Use of Bid Securing Declaration, within fifteen (15) days from receipt of the written demand by the procuring entity for the commission of acts resulting to the enforcement of the bid securing declaration under Sections 23.1(b), 34.2, 40.1 and 69.1, except 69.1(f), of the IRR of RA No. 9184; without prejudice to other legal action the government may undertake.
3. I/We understand that this Bid Securing Declaration shall cease to be valid on the following circumstances:
  - a. Upon expiration of the bid validity period, or any extension thereof pursuant to your request;
  - b. I am/we are declared ineligible or post-disqualified upon receipt of your notice to such effect, and (i) I/we failed to timely file a request for reconsideration or (ii) I/we filed a waiver to avail of said right; and
  - c. I am/we are declared the bidder with the Lowest Calculated Responsive Bid, and I/we have furnished the performance security and signed the Contract.

IN WITNESS WHEREOF, I/We have hereunto set my/our hand/s this \_\_\_\_ day of [month] [year] at [place of execution].

---

Name of Bidder/ Authorized Representative  
(Signatory's Legal Capacity)  
AFFIANT

**[Jurat]**  
*[Format shall be based on the latest Rules on Notarial Practice]*

## CONSTRUCTION METHODOLOGY

Name of Project : \_\_\_\_\_

Project Description : \_\_\_\_\_

Location : \_\_\_\_\_

### NOTES:

The narrative construction method will guide and familiarize the contractor and the PPA on how the project shall be carried out in accordance with the highest standard of workmanship.

The construction method shall be consistent with the Bar Chart / S-Curve Schedule, Equipment Schedule and Manpower Schedule.

\_\_\_\_\_  
Name of Bidder/Authorized Representative  
(Signatory's Legal Capacity)

## MANPOWER SCHEDULE

Name of Project : \_\_\_\_\_

Project Description : \_\_\_\_\_

Location : \_\_\_\_\_

MANPOWER (Minimum)	CONTRACT DURATION (_____ Calendar Days)																							
	M O N T H L Y																							
	1	2	3	4	5	6	7	8	9	10	11	12	13	14	15	16	17	18	19	20	21	22	23	24
Project Manager																								
Project Engineer																								
Materials Engineer I																								
Construction Safety and Health Officer																								
Foreman																								
Specify other applicable positions, ie.:																								
- Carpenter																								
- Steelman																								
- Mason																								
- Electrician																								
- Rigger																								
- Others																								

\_\_\_\_\_  
Name of Bidder/Authorized Representative  
(Signatory's Legal Capacity)

Revised: September 2021

## EQUIPMENT UTILIZATION SCHEDULE

**Name of Project** : \_\_\_\_\_

**Project Description** : \_\_\_\_\_

**Location** : \_\_\_\_\_

[illegible]

**Name of Bidder/Authorized Representative  
(Signatory's Legal Capacity)**

## CASHFLOW BY QUARTER AND PAYMENT SCHEDULE

Name of Project: : \_\_\_\_\_

Project Description : \_\_\_\_\_

Location : \_\_\_\_\_

Project Duration (days or months)	Payment Schedule (Monthly, in Pesos)	Cash flow (Quarterly, in Pesos)
<b>TOTAL</b>		

### NOTES

- The cash flow by quarter and payment schedule should be consistent with the Bar Chart and S-curb.
- Payment schedule shall not be more than once a month.

\_\_\_\_\_  
Name of Bidder/Authorized Representative  
(Signatory's Legal Capacity)

Revised: September 2021

**Contract Agreement Form for the  
Procurement of Infrastructure Projects (Revised)**  
*[not required to be submitted with the Bid, but it shall be submitted within ten (10) days after receiving  
the Notice of Award]*

---

**CONTRACT AGREEMENT**

THIS AGREEMENT, made this \_\_\_\_\_ day of \_\_\_\_\_, \_\_\_\_\_ between Philippine Ports Authority with principal office at PPA Building, Bonifacio Drive, South Harbor, Port Area, Manila (hereinafter called the "Entity") and [name and address of Contractor] (hereinafter called the "Contractor").

WHEREAS, the Entity is desirous that the Contractor execute [name and identification number of contract] (hereinafter called "the Works") and the Entity has accepted the Bid for [contract price in words and figures in specified currency] by the Contractor for the execution and completion of such Works and the remedying of any defects therein.

**NOW THIS AGREEMENT WITNESSETH AS FOLLOWS:**

1. In this Agreement, words and expressions shall have the same meanings as are respectively assigned to them in the Conditions of Contract hereinafter referred to.
2. The following documents as required by the 2016 revised Implementing Rules and Regulations of Republic Act No. 9184 shall be deemed to form and be read and construed as part of this Agreement, viz.:
  - a. Philippine Bidding Documents (PBDs);
    - i. Drawings/Plans;
    - ii. Specifications;
    - iii. Bill of Quantities;
    - iv. General and Special Conditions of Contract;
    - v. Supplemental or Bid Bulletins, if any;
  - b. Winning bidder's bid, including the Eligibility requirements, Technical and Financial Proposals, and all other documents or statements submitted;

Bid form, including all the documents/statements contained in the Bidder's bidding envelopes, as annexes, and all other documents submitted (e.g., Bidder's response to request for clarifications on the bid), including corrections to the bid, if any, resulting from the Procuring Entity's bid evaluation;

- c. Performance Security;
- d. Notice of Award of Contract and the Bidder's conforme thereto; and



- e. Other contract documents that may be required by existing laws and/or the Procuring Entity concerned in the PBDs. Winning bidder agrees that additional contract documents or information prescribed by the GPPB that are subsequently required for submission after the contract execution, such as the Notice to Proceed, Variation Orders, and Warranty Security, shall likewise form part of the Contract.
3. In consideration for the sum of [total contract price in words and figures] or such other sums as may be ascertained, [Named of the bidder] agrees to [state the object of the contract] in accordance with his/her/its Bid.
4. The Philippine Ports Authority agrees to pay the above-mentioned sum in accordance with the terms of the Bidding.

IN WITNESS whereof the parties thereto have caused this Agreement to be executed the day and year first before written.

**JAY DANIEL R. SANTIAGO**  
General Manager

for:

**Philippine Ports Authority**

**Name of Bidder/ Authorized  
Representative  
(Signatory's Legal Capacity)**

for:

**Contractor**

**Acknowledgment**

***[Format shall be based on the latest Rules on Notarial Practice]***